

REVIEW YOUR PRICES

Prices and delivery times are subject to review by One Point Partitions.

POWDER COATED STEEL

\$2,692.00

3 year warranty

Price includes materials, hardware and delivery to zip code 34683. See the following layouts.

Delivered in 4-6 business days



Videos Colors

LAMINATE

\$3,393.00

5 year warranty

Price includes materials, hardware and delivery to zip code 34683. See the following layouts.

Delivered in 4-6 business days



Videos Colors

SOLID PLASTIC

\$4,659.00

25 year warranty

Price includes materials, hardware and delivery to zip code 34683. See the following layouts.

Delivered in 4-6 business days



Videos Colors

PHENOLIC BLACK CORE

\$5,222.00

25 year warranty

Price includes materials, hardware and delivery to zip code 34683. See the following layouts.

Delivered in 4-6 business days



Videos Colors

STAINLESS STEEL

\$5,264.00

5 year warranty

Price includes materials, hardware and delivery to zip code 34683. See the following layouts.

Delivered in 4-6 business days



Videos Colors

Good news! This quote includes all rooms. See the following pages for those room layouts.

All doors, panels, pilaster, screws, brackets, and anchors for a typical install are included.

Delivery from our local terminal to anywhere within your specified zip code is also included.

REVIEW YOUR LAYOUTS

Job #229798.1 Date: 02/12/21

ROOM #1 - Untitled

4 Stalls, 1 Urinal Screen

Layout: Alcove Closed, ADA, Right

Partition Depth: 62"

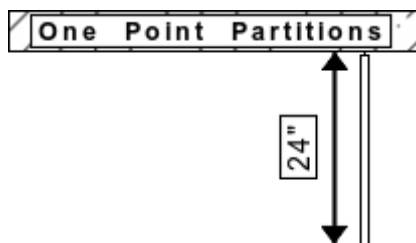
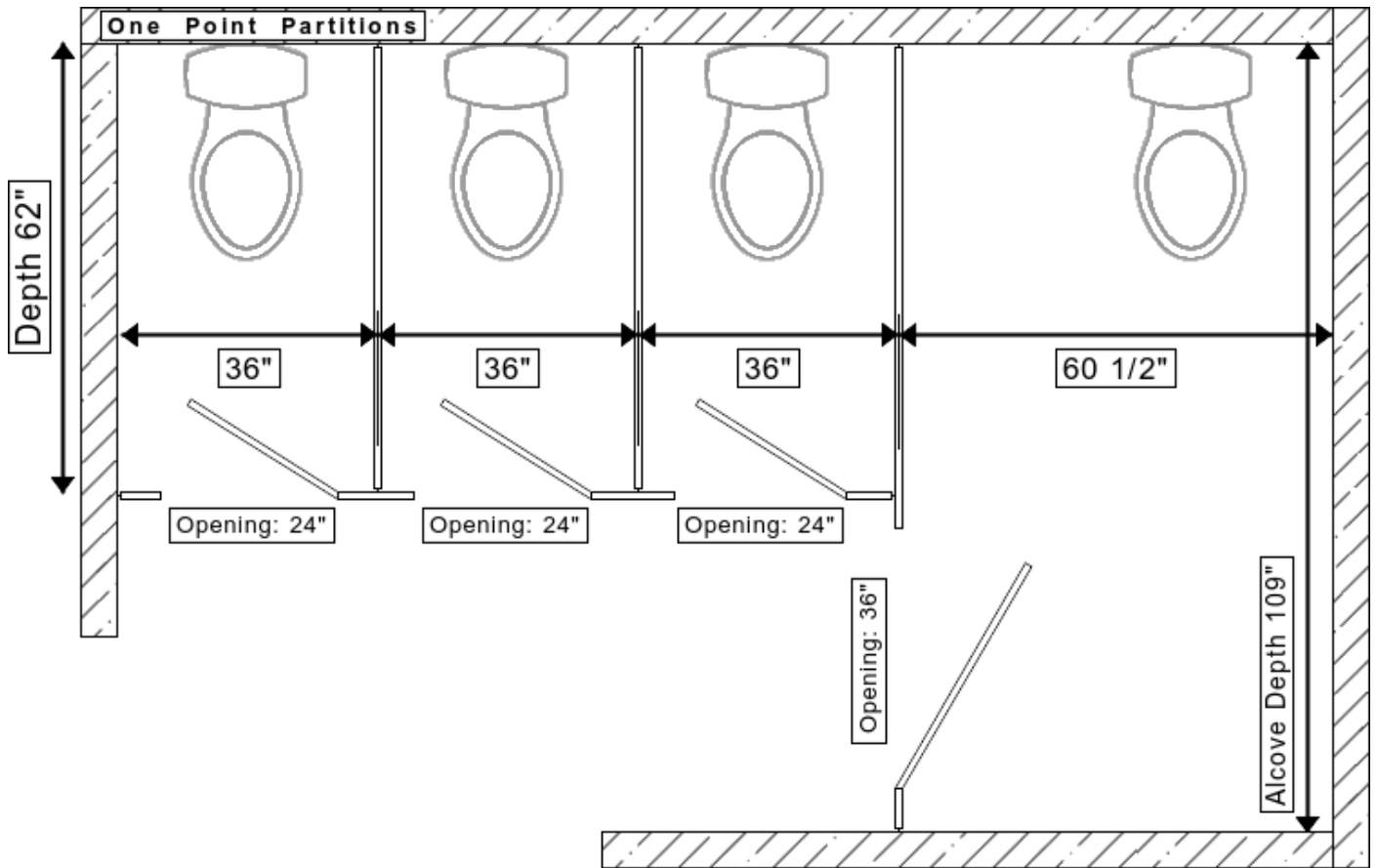
Stall 1 - Width: 36"; Door: 24", Right In.

Stall 2 - Width: 36"; Door: 24", Right In.

Stall 3 - Width: 36"; Door: 24", Right In.

Stall 4 - Alcove Depth: 109"; Width: 60 1/2"; Door: 36", Right In.

Urinal Screen Depths: 24"



Stall widths are to the centerline. Stall depths are to the face. Alcove depths are wall to wall.

Need this layout bigger or smaller? No problem! Our Partition Experts will design it to fit your restroom.

This layout is included in the price.

ROOM #2 - Untitled

2 Stalls, 1 Urinal Screen

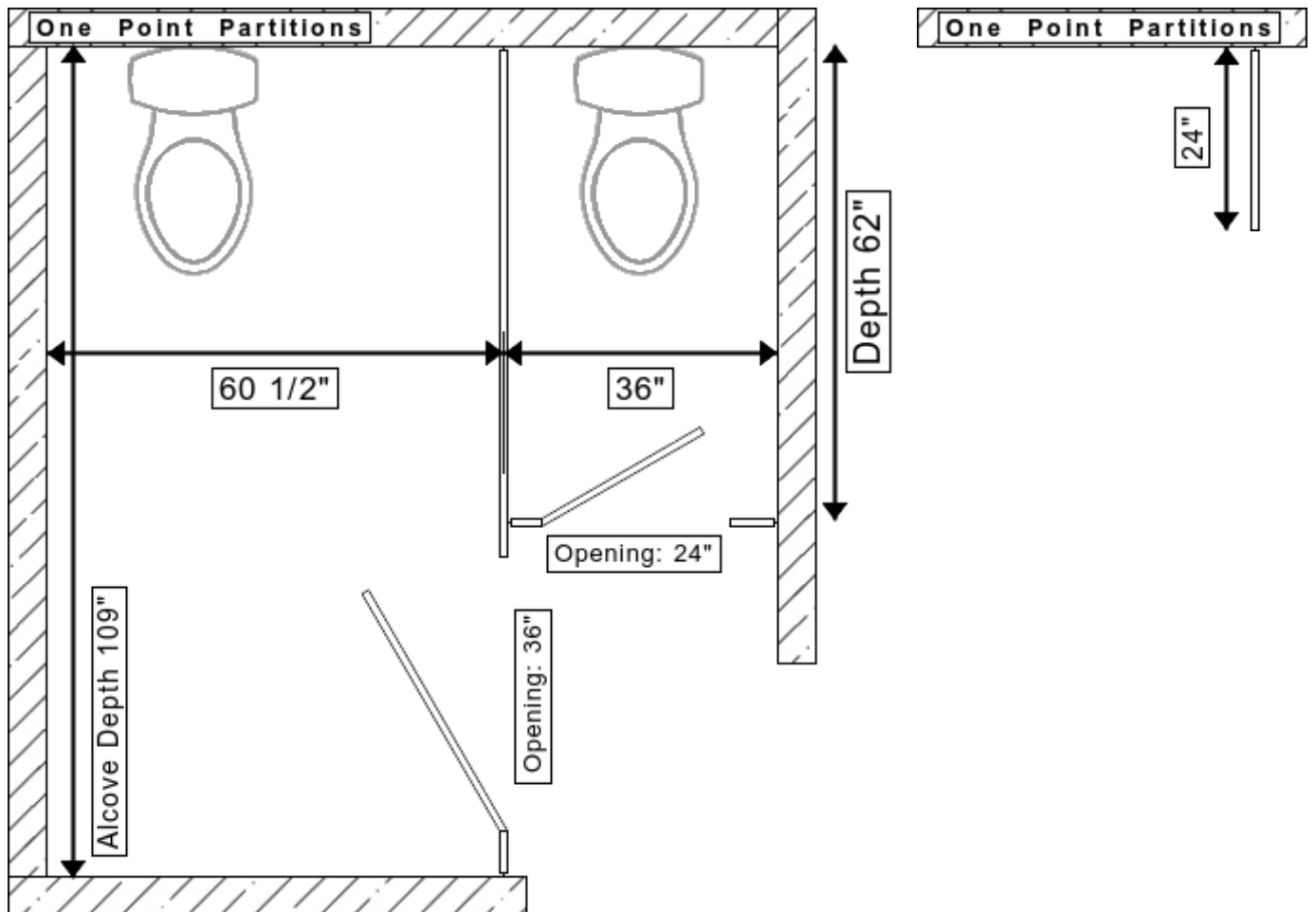
Layout: Alcove Closed, ADA, Left

Partition Depth: 62"

Stall 1 - Alcove Depth: 109"; Width: 60 1/2"; Door: 36", Left In.

Stall 2 - Width: 36"; Door: 24", Left In.

Urinal Screen Depths: 24"



Stall widths are to the centerline. Stall depths are to the face. Alcove depths are wall to wall.

Need this layout bigger or smaller? No problem! Our Partition Experts will design it to fit your restroom.

This layout is included in the price.

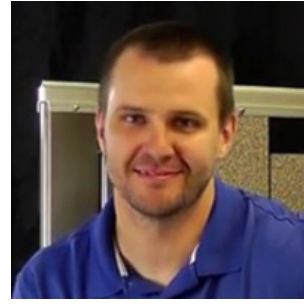
Meet the One Point Partition Experts



Andy Hughes



Jason Hughes



Brandon Graham



Brock Hutson



Jhoana Soriano

We're available to talk about your quote, so give us a call at **800.756.6817** or email sales@onepointpartitions.com to finalize your drawings and help you purchase your partitions. (Prices and lead times are subject to review by OPP.)