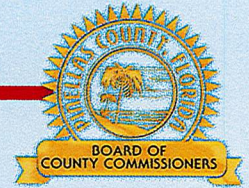


Doing Things!

**PLANNING DEPARTMENT
&
PARTNERS**





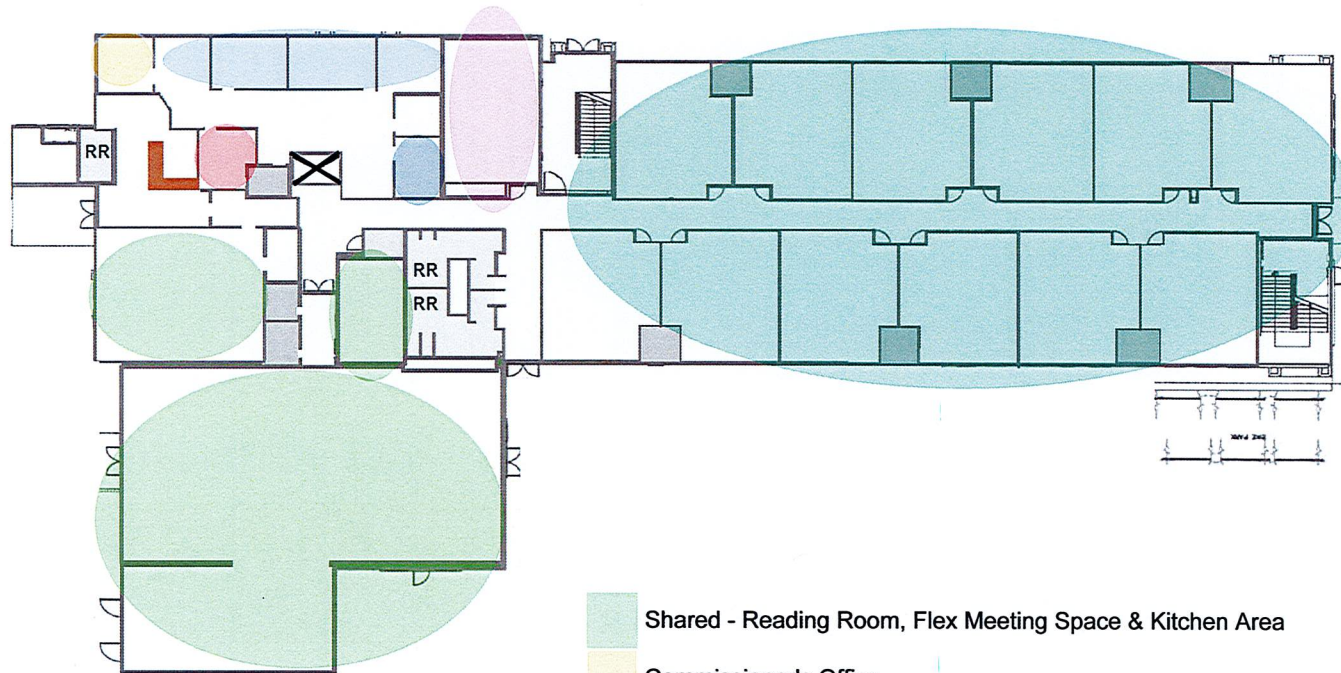
LEALMAN COMMUNITY CAMPUS

MAKING A PROPERTY A PLACE!

PRELIMINARY SPACE PROGRAMMING

TWO STORY BUILDING
1st FLOOR

20,054 SF MOL
NOT TO SCALE

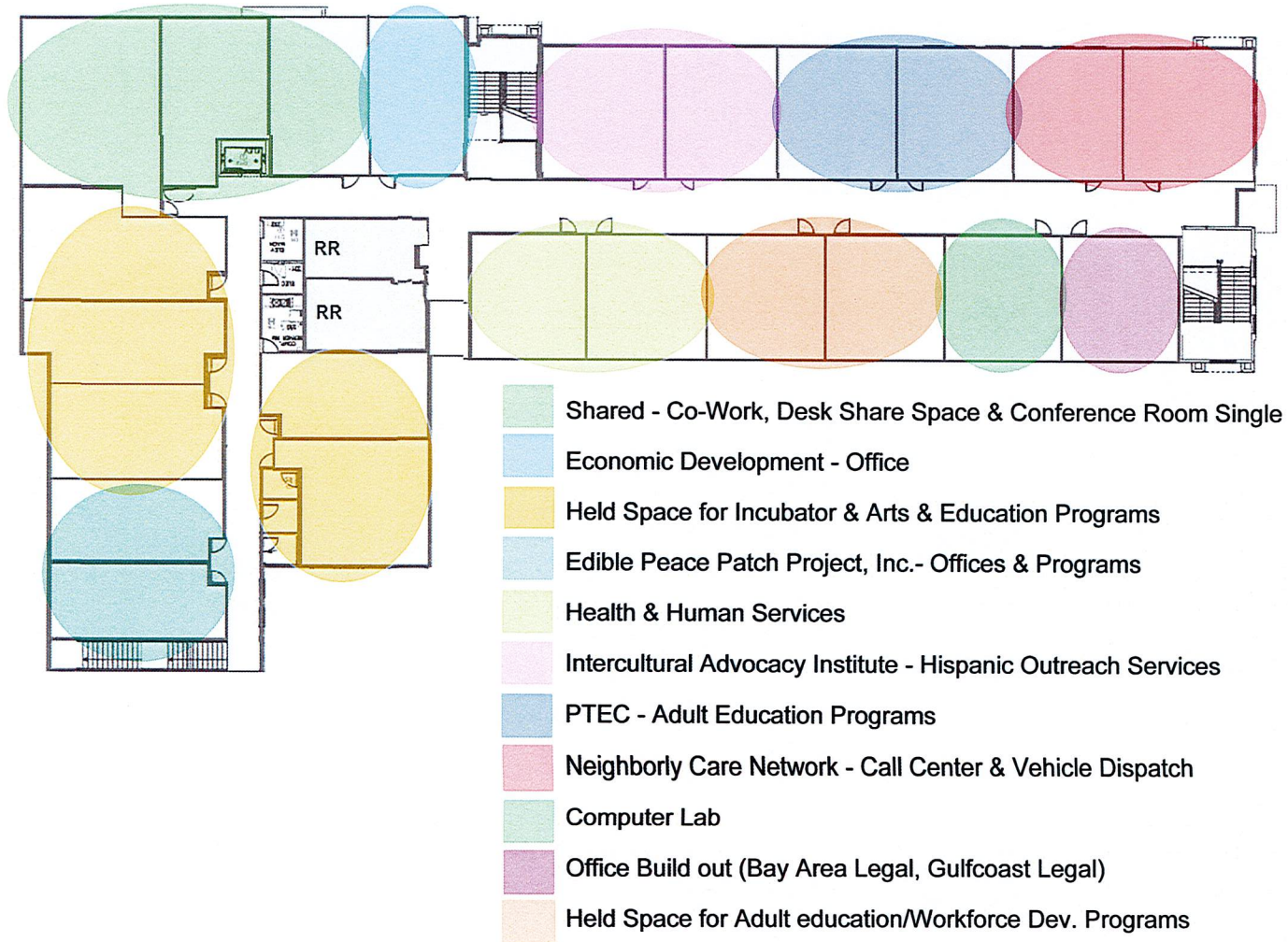


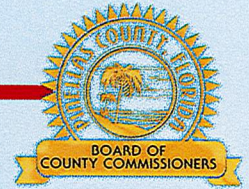
- Shared - Reading Room, Flex Meeting Space & Kitchen Area
- Commissioner's Office
- CRA Planning, County Flex Offices & Shared Conference Room
- Community Health Centers of Pinellas - Clinic/Health Screenings
- YMCA - Preschool
- County Kiosks & Self-Serve Computer Stations
(Animal Services, Utilities, Permitting, etc.)

PRELIMINARY SPACE PROGRAMMING

TWO STORY BUILDING
2nd FLOOR

20,392 SF MOL
NOT TO SCALE

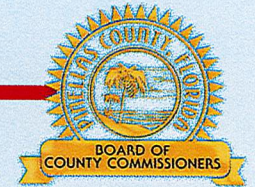




TENANT STATUS UPDATE

- County Departments, UF/IFAS, YMCA, Excelerated Teaching Center and The Broach School will occupy nearly 2/3 of all leasable space (excluding common areas)
- Leases under review by two additional partners: Gulfcoast Legal Services & The Edible Peace Patch Project
- Preliminary discussions with Pinellas County Homeless Leadership Board
- Remainder of tenants pre-selected through Letter of Intent process were either removed from consideration due to logistical concerns or an inability to pay established lease rates

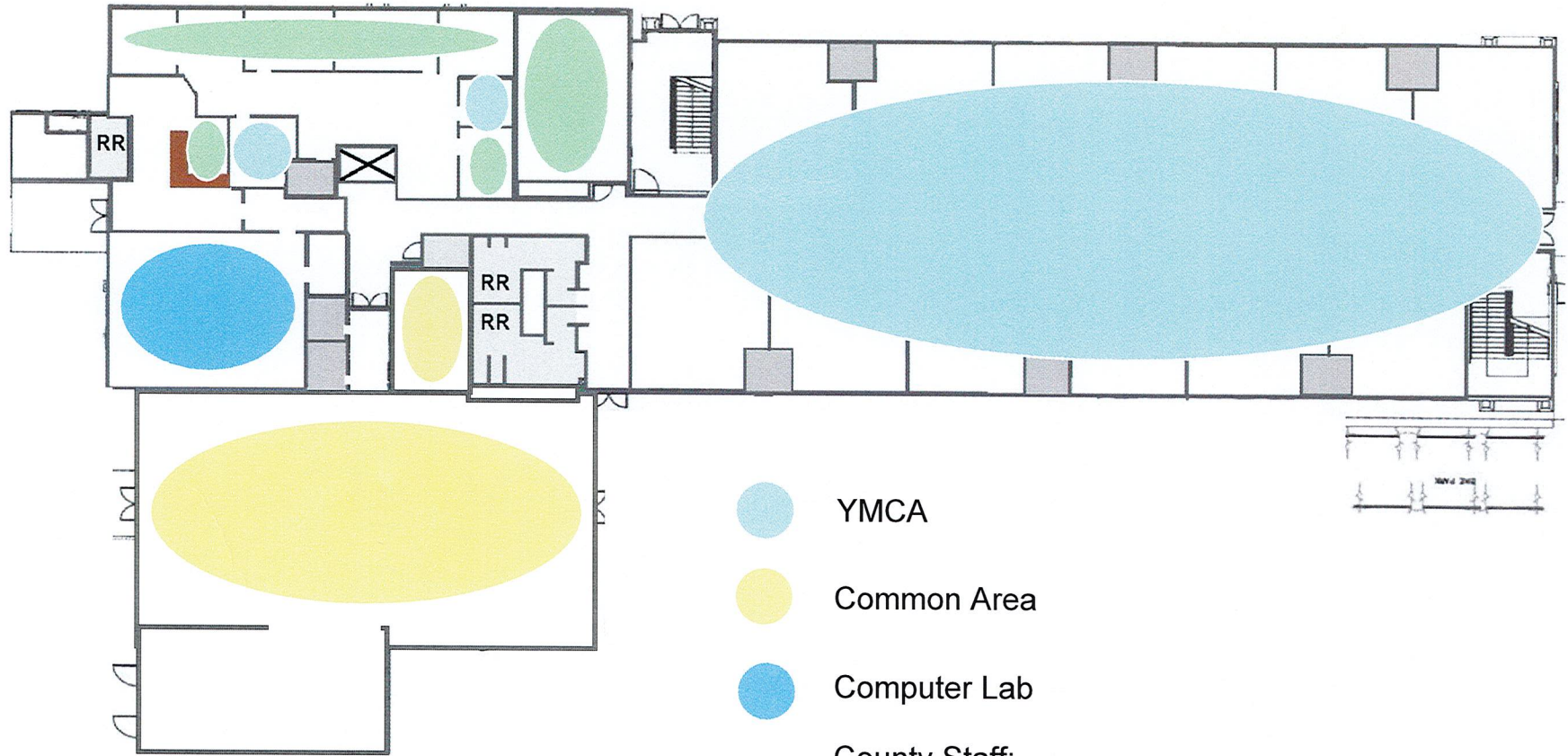
NEXT STEPS







- Issue a second Letter of Interest process to solicit organizations with proven experience in areas of workforce development and adult/continuing education
- Develop a grant program to assist key service providers with lease rates and/or needed building improvements
- Kitchen equipment should be installed early next week allowing for broader range of access to healthy food and life skills programs and emergency sheltering options. Tenant organizations who have expressed interest in partnering to provide these types of programs include YMCA, Edible Peace Patch and UF/Extension
- Implement staffing plan for facility operations
- Identify and setup Commission Office

TWO STORY BUILDING
1st FLOOR

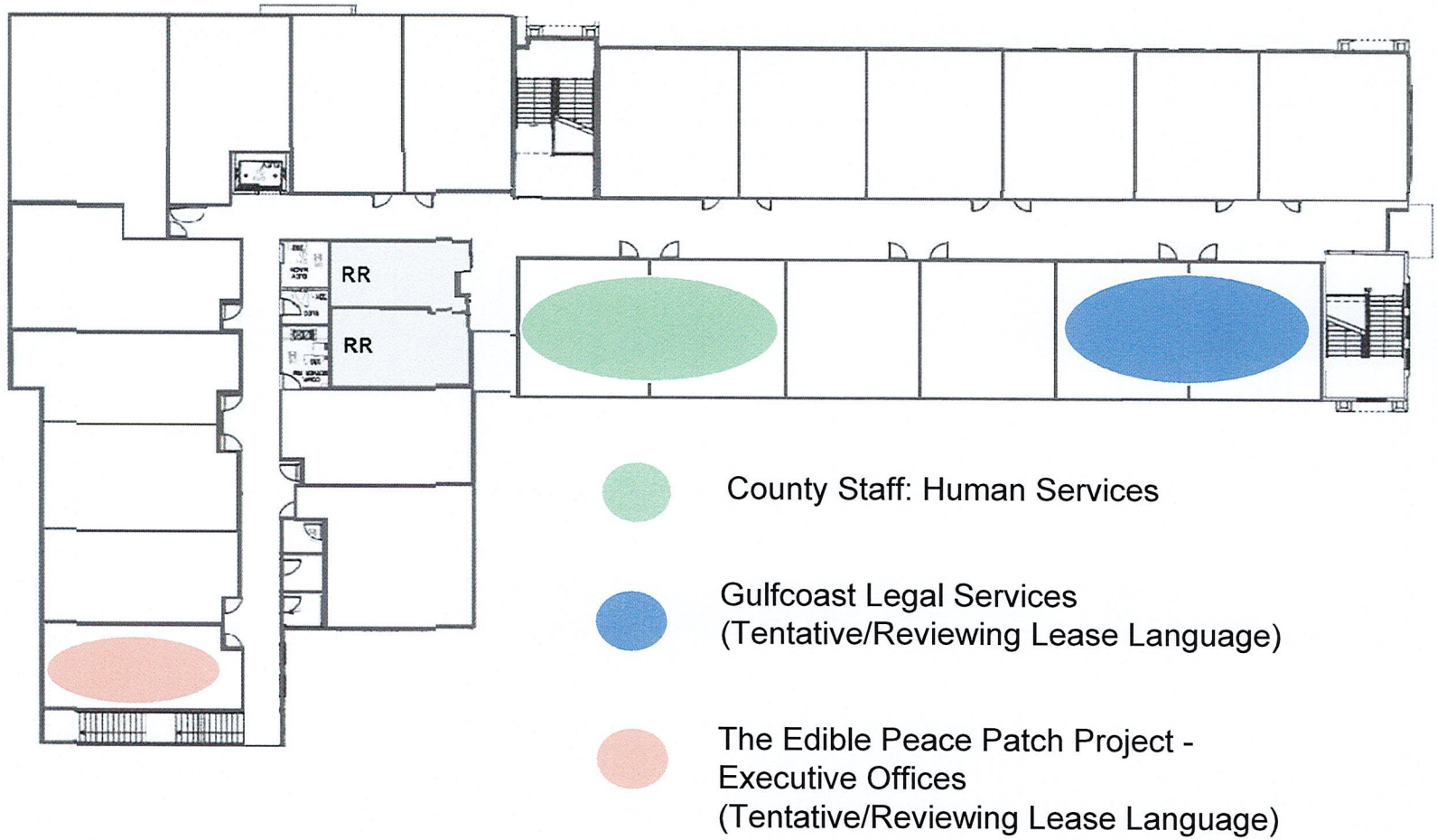
20,054 SF MOL
NOT TO SCALE



-  YMCA
-  Common Area
-  Computer Lab
-  County Staff:
CRA / Administrative / Shared Conference Room /
Economic Development

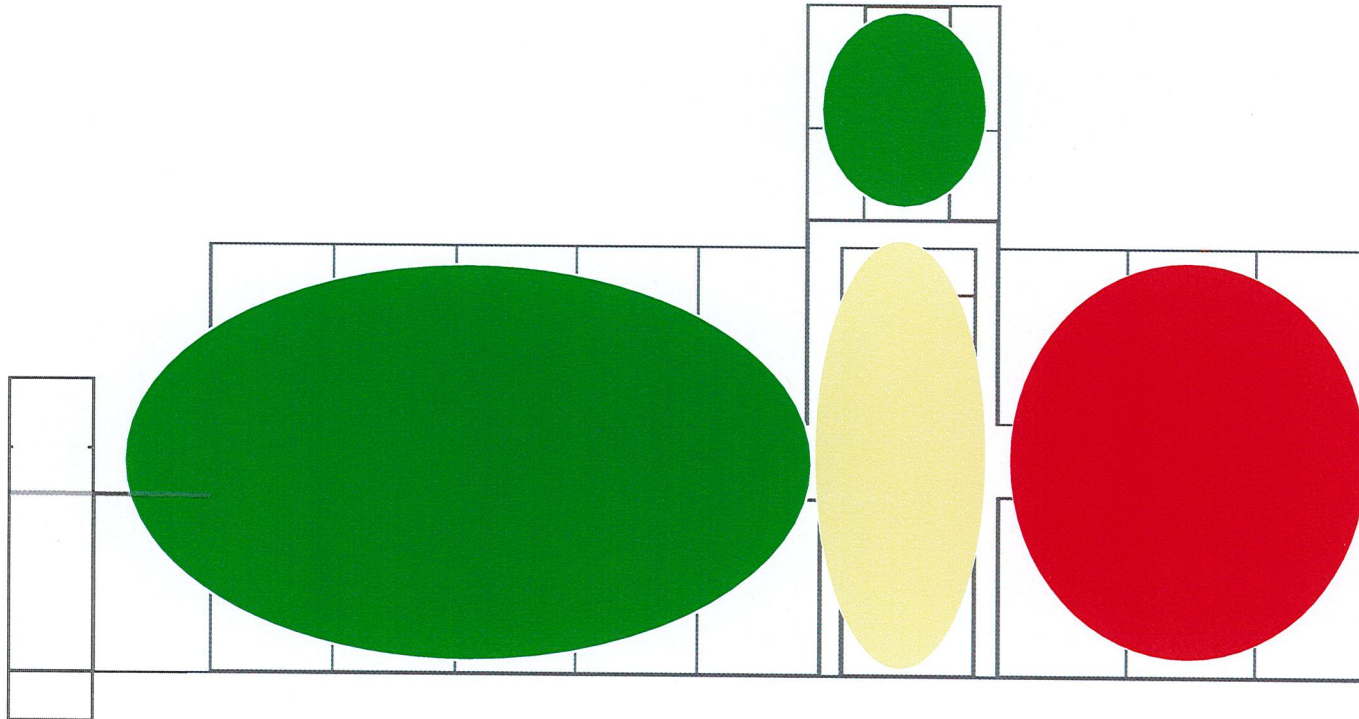
TWO STORY BUILDING
2nd FLOOR




20,392 SF MOL
NOT TO SCALE



SINGLE STORY BUILDING

20,392 SF MOL
NOT TO SCALE



-  The Broach School
-  Common Area
-  Excellerated Teaching Center