

RESOLUTION NO. 18-2

RESOLUTION DEDICATING A PORTION OF COUNTY OWNED PROPERTY IN SECTION 03, TOWNSHIP 29 SOUTH, RANGE 15 EAST AS PUBLIC ROAD RIGHT-OF-WAY FOR THE SUNSET POINT ROAD AND NORTH BETTY LANE INTERSECTION IMPROVEMENT PROJECT.

WHEREAS, the Pinellas County Department of Public Works is preparing for construction of an intersection improvement project at Sunset Point Road and North Betty Lane; and

WHEREAS, Pinellas County holds title in fee simple to certain lands as described in Official Record's Book 16536, page 2334, and Official Record's Book 18136, page 1625, lying in Section 03, Township 29 South, Range 15 East; and

WHEREAS, a portion of these lands as described in "EXHIBIT A", attached hereto, are being used for the construction of said intersection improvement project and Pinellas County is desirous of establishing the necessary road rights-of-way from said County-owned property for the Sunset Point Road and North Betty Lane Intersection Improvement Project through this dedication.

NOW THEREFORE, BE IT RESOLVED, by the Board of County Commissioners of Pinellas County, Florida, duly assembled this 23rd day of January, 2018, hereby dedicates as public road right-of-way the ten (10) foot strip depicted on Exhibit A and attached hereto and authorizes the Clerk of the Circuit Court to certify and record this dedication of public road right-of-way for the Sunset Point Road and North Betty Lane Intersection Improvement Project.

Commissioner Justice offered the foregoing resolution and moved its adoption which was seconded by Commissioner Long, and upon roll call the vote was:

AYES: Welch, Seel, Eggers, Gerard, Justice, Long, and Morroni.

NAYS: None.

ABSENT OR NOT VOTING: None.

APPROVED AS TO FORM

By: Cheryl Donovan Pembroke
Office of the County Attorney

PINELLAS COUNTY
 PUBLIC WORKS
 SURVEY AND MAPPING DIVISION
 22211 U.S. HIGHWAY 19 N.
 CLEARWATER, FLORIDA 33765-2328



SECTION(S) 3, TOWNSHIP 29 SOUTH, RANGE 15 EAST
 DESCRIPTION

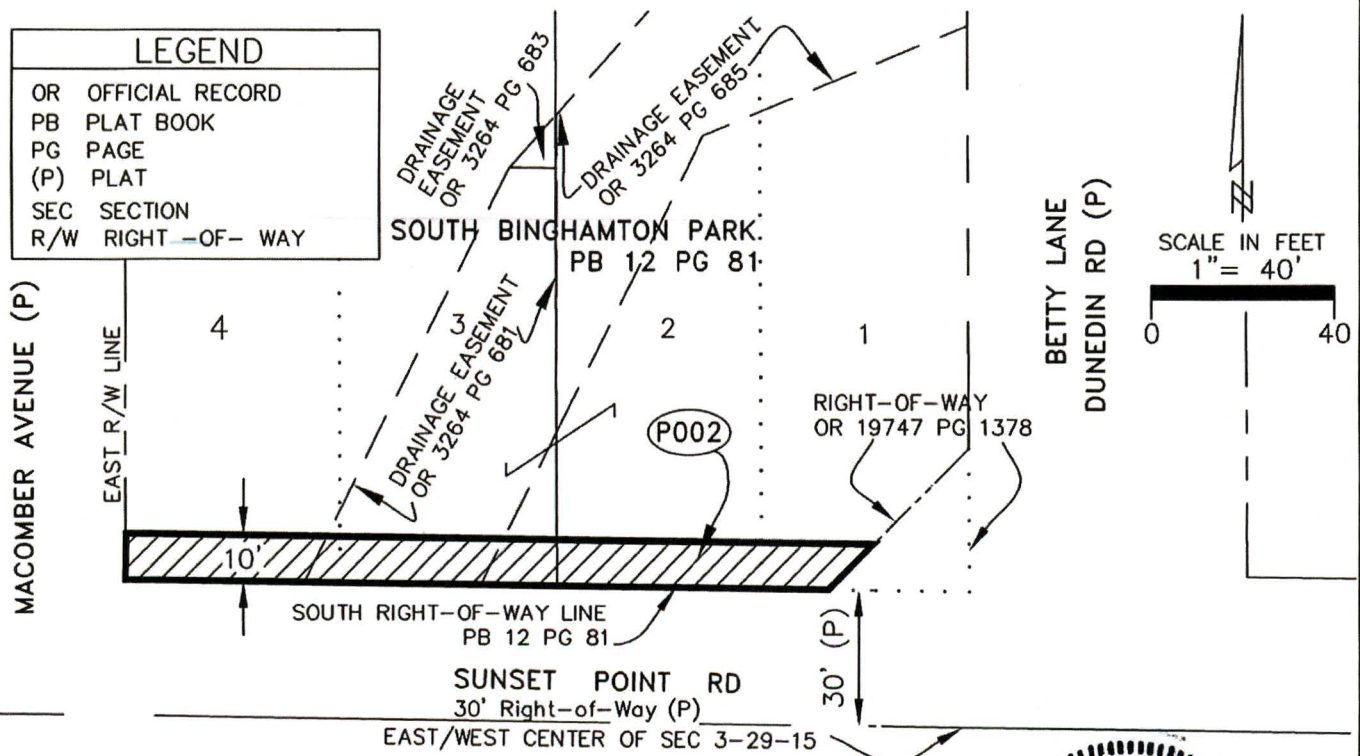
An irregular shaped tract of land being a portion of Lots 1 thru 4, SOUTH BINGHAMTON PARK Subdivision according to Plat Book 12, Pages 81, public records of Pinellas County, Florida, lying within Section 3 Township 29 South, Range 15 East being more particularly described as follows:

The South 10 feet of Lots 1 thru 4, of said SOUTH BINGHAMTON PARK Subdivision, less and except the Right-of Way recorded in Official Record 19747, Page 1378, lying within Section 3 Township 29 South, Range 15 East.

CONTAINING: 1605 square feet or 0.037 acres more or less.

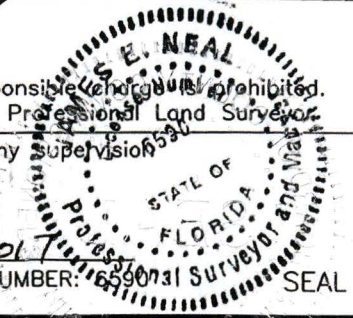
SKETCH--NOT A SURVEY

LEGEND	
OR	OFFICIAL RECORD
PB	PLAT BOOK
PG	PAGE
(P)	PLAT
SEC	SECTION
R/W	RIGHT-OF-WAY



Additions or deletions by other than the Professional Land Surveyor in responsible charge are prohibited. Land Description is invalid without signature and/or embossed seal of the Professional Land Surveyor.

CALCULATED BY: DMcD	The above Sketch and/or Land description was prepared under my supervision and is true and correct to the best of my knowledge and belief.
CHECKED BY: GD	
S.F.N.: 2067	By: Pinellas County Survey and Mapping Division DATE 12/13/2017 JAMES E. NEAL, PROFESSIONAL SURVEYOR AND MAPPER LICENSE NUMBER: 65907 STATE OF FLORIDA, PHONE # (727) 464-8904





I, KENNETH P. BURKE, Clerk of the Circuit Court and Clerk Ex-Officio, Board of County Commissioners, do hereby certify that the above and foregoing is a true and correct copy of the original as it appears in the official files of the Board of County Commissioners of Pinellas County, Florida. Witness my hand and seal of said County FL this _____ day of _____ A.D. 20____

KENNETH P. BURKE, Clerk of the Circuit Court Ex-Officio Clerk of the Board of County Commissioners, Pinellas County, Florida.

By *[Signature]*
Deputy Clerk