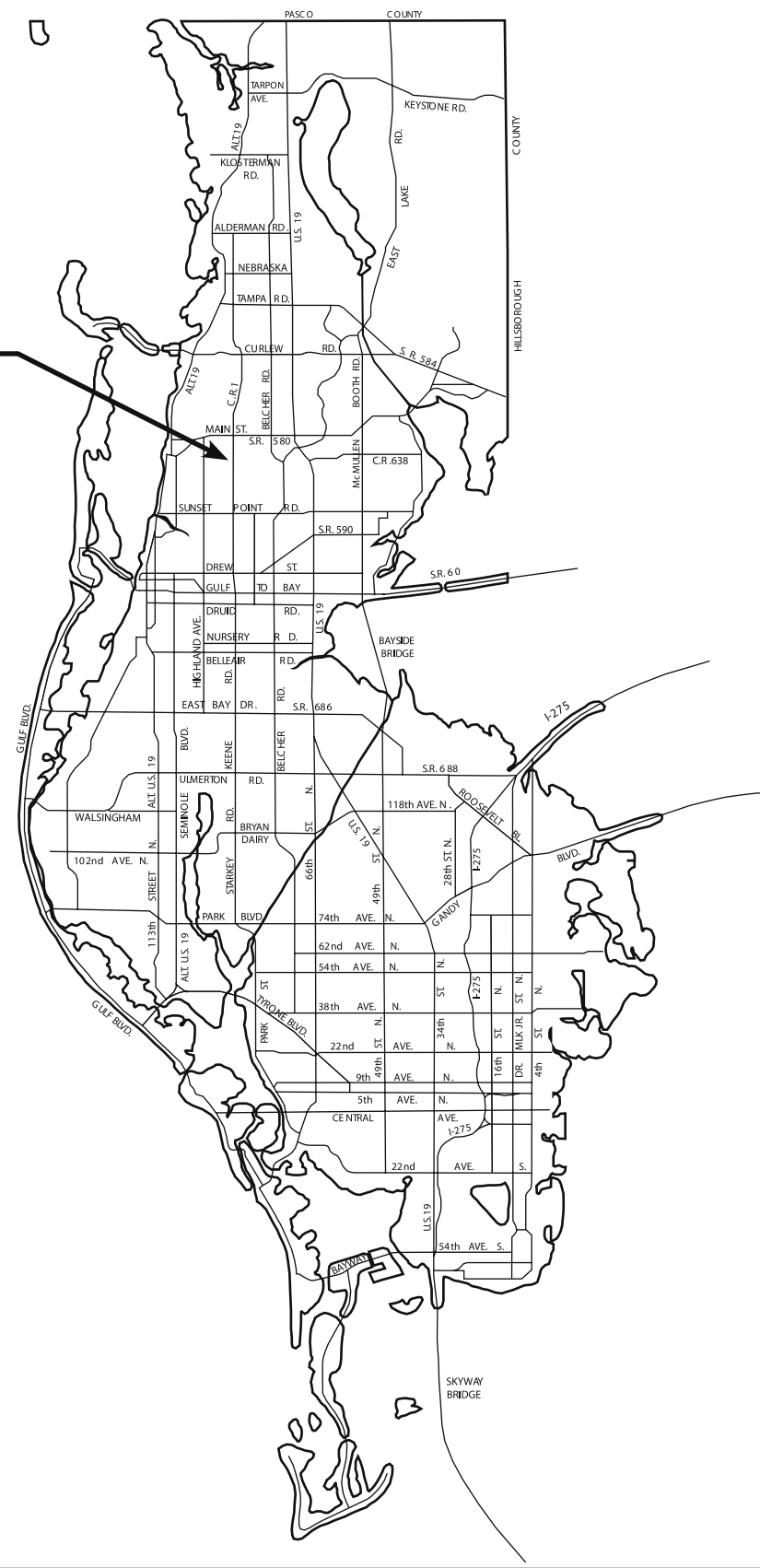


LOCATION MAP

Z-17-7-15



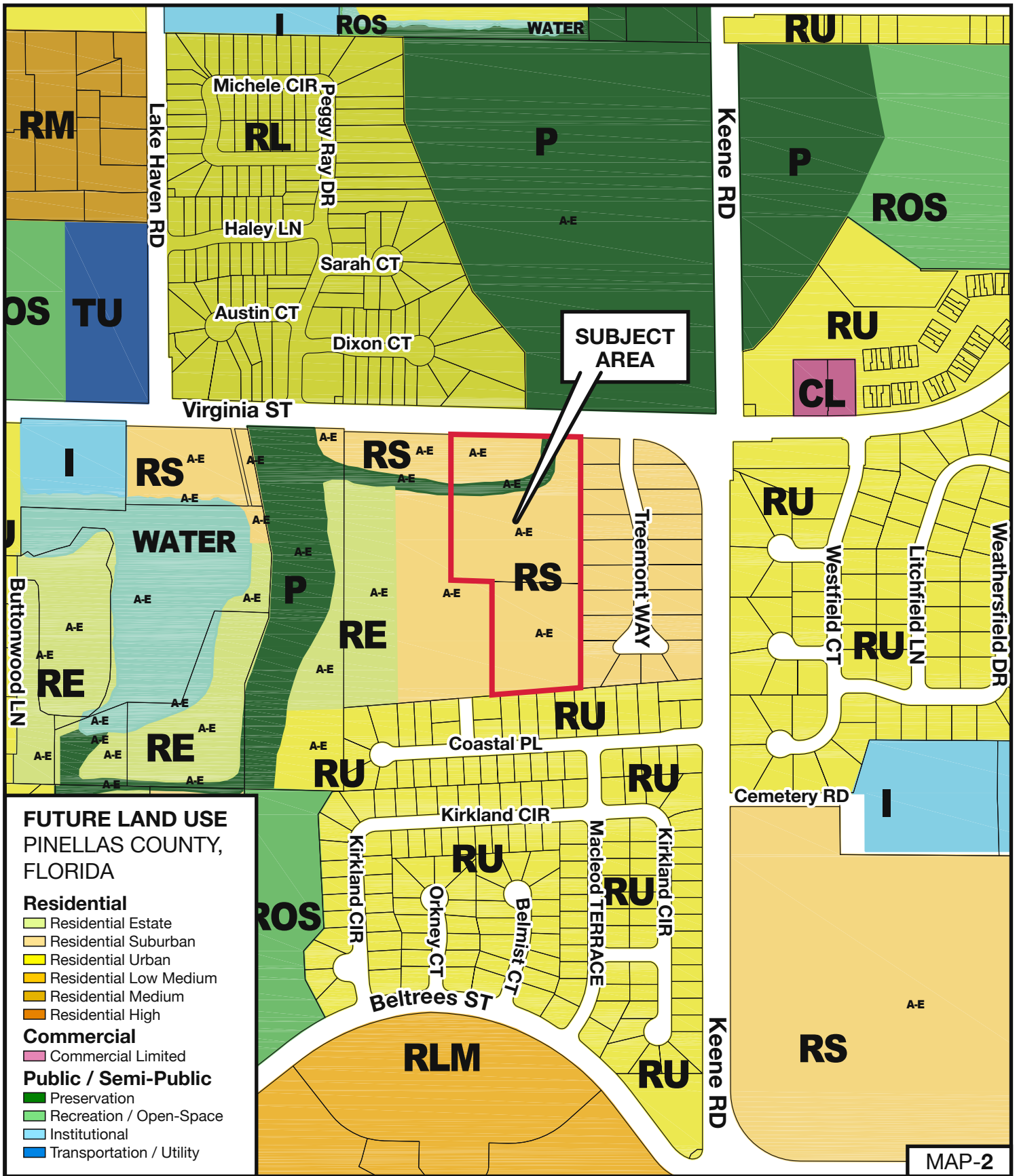
MAP-1

Z-17-7-15

Zoning From: A-E, Agricultural Estate Residential
 To: RPD-2.5, Residential Planned Development,
 2.5 units per acre

Parcel I.D. 35/28/15/0000/110/0100 & 0400
 Prepared by: Pinellas County Planning Department June 2015





**FUTURE LAND USE
PINELLAS COUNTY,
FLORIDA**

Residential

- Residential Estate
- Residential Suburban
- Residential Urban
- Residential Low Medium
- Residential Medium
- Residential High

Commercial

- Commercial Limited

Public / Semi-Public

- Preservation
- Recreation / Open-Space
- Institutional
- Transportation / Utility

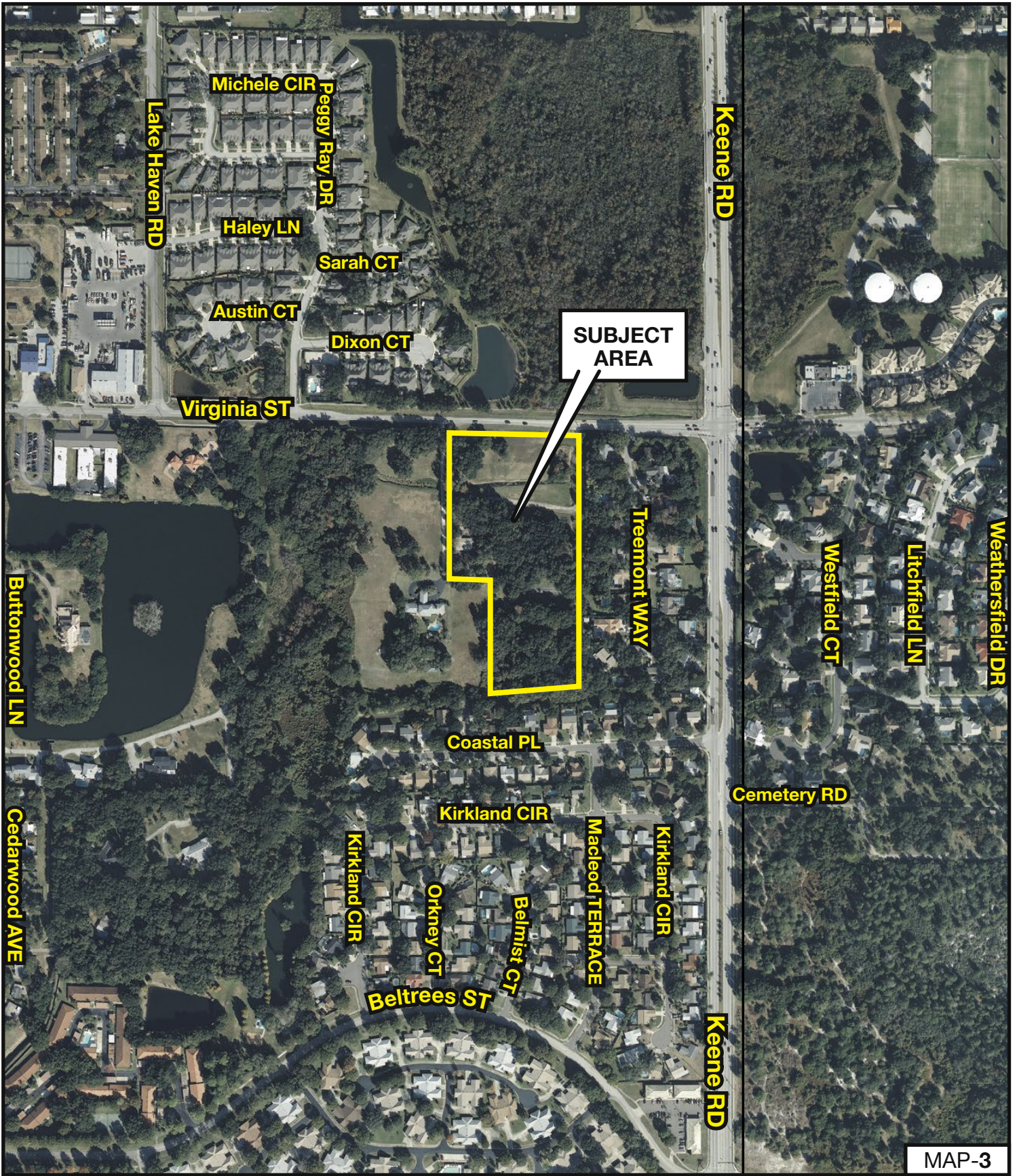
Z-17-7-15

Zoning From: A-E, Agricultural Estate Residential
To: RPD-2.5, Residential Planned Development,
2.5 units per acre

Parcel I.D. 35/28/15/00000/110/0100 & 0400
Prepared by: Pinellas County Planning Department June 2015

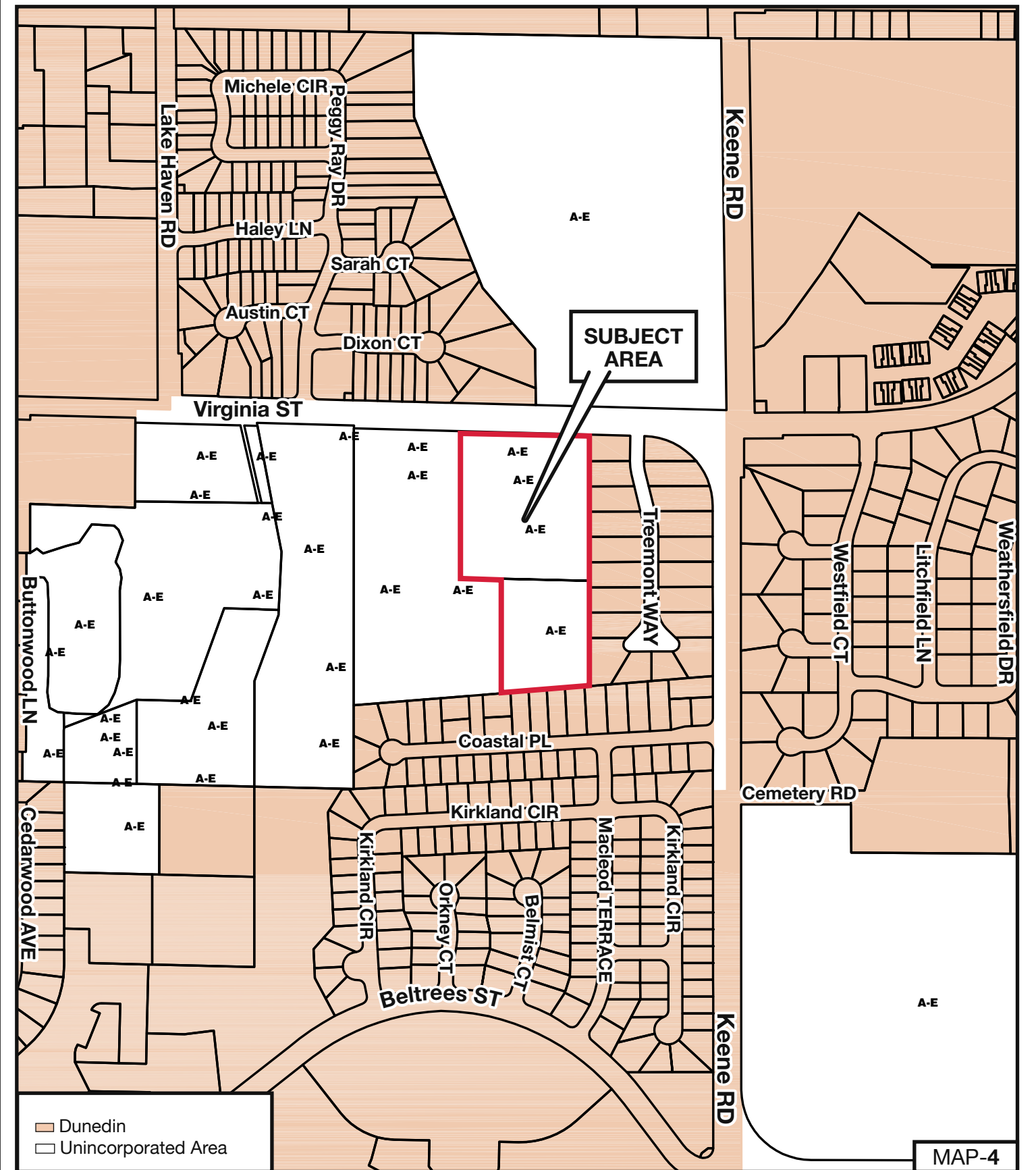


MAP-2



MAP-3

<p>Z-17-7-15</p>	<p>Zoning From: A-E, Agricultural Estate Residential To: RPD-2.5, Residential Planned Development, 2.5 units per acre</p>		
<p>Parcel I.D. 35/28/15/00000/110/0100 & 0400 Prepared by: Pinellas County Planning Department June 2015</p>			



SUBJECT AREA

Z-17-7-15

Zoning From: A-E, Agricultural Estate Residential
 To: RPD-2.5, Residential Planned Development,
 2.5 units per acre

Parcel I.D. 35/28/15/00000/110/0100 & 0400
 Prepared by: Pinellas County Planning Department June 2015



MAP-4