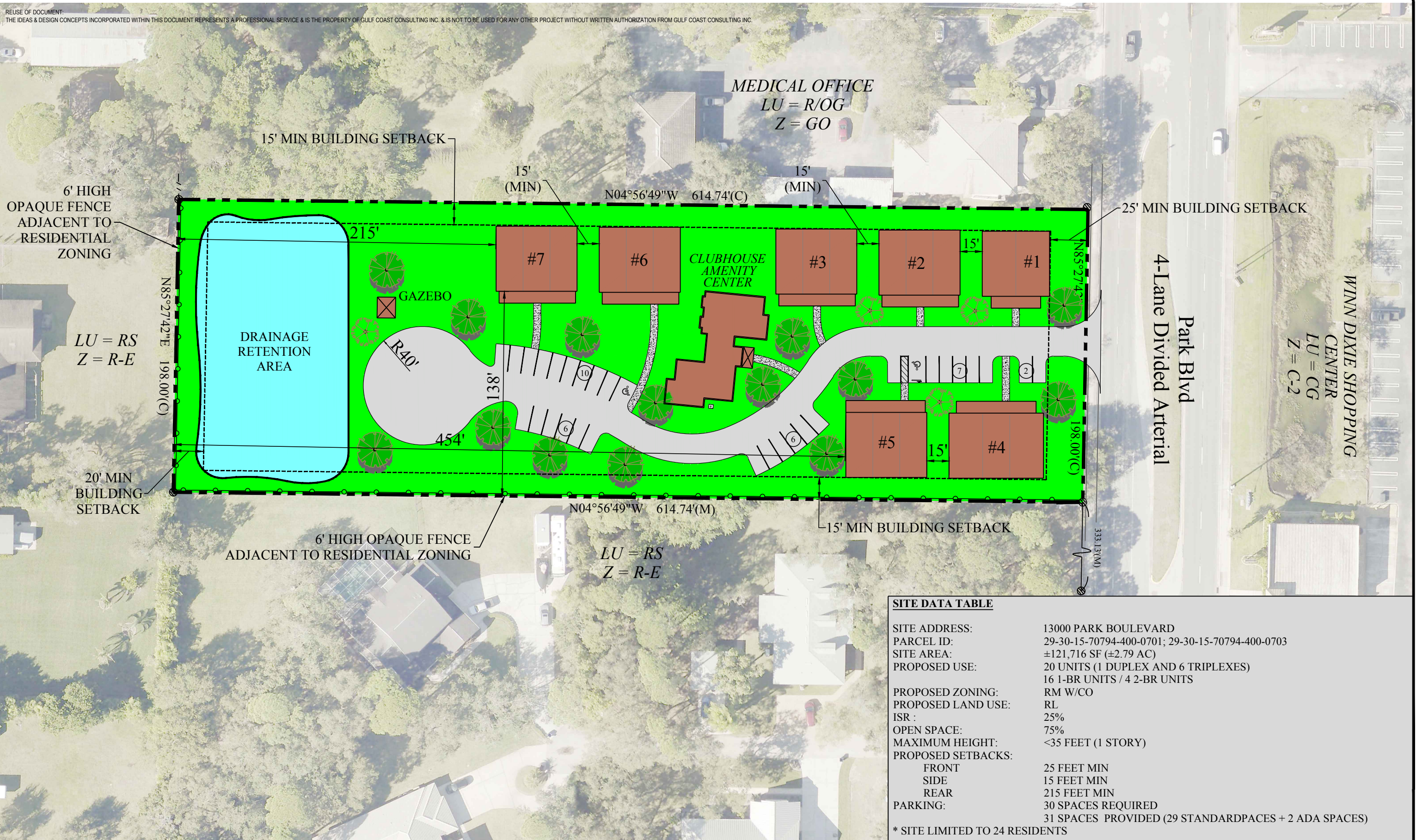


REUSE OF DOCUMENT:
 THE IDEAS & DESIGN CONCEPTS INCORPORATED WITHIN THIS DOCUMENT REPRESENTS A PROFESSIONAL SERVICE & IS THE PROPERTY OF GULF COAST CONSULTING INC. & IS NOT TO BE USED FOR ANY OTHER PROJECT WITHOUT WRITTEN AUTHORIZATION FROM GULF COAST CONSULTING INC.



MEDICAL OFFICE
 LU = R/OG
 Z = GO

LU = RS
 Z = R-E

LU = RS
 Z = R-E

LU = CG
 Z = C-2

SITE DATA TABLE	
SITE ADDRESS:	13000 PARK BOULEVARD
PARCEL ID:	29-30-15-70794-400-0701; 29-30-15-70794-400-0703
SITE AREA:	±121,716 SF (±2.79 AC)
PROPOSED USE:	20 UNITS (1 DUPLEX AND 6 TRIPLEXES) 16 1-BR UNITS / 4 2-BR UNITS
PROPOSED ZONING:	RM W/CO
PROPOSED LAND USE:	RL
ISR :	25%
OPEN SPACE:	75%
MAXIMUM HEIGHT:	<35 FEET (1 STORY)
PROPOSED SETBACKS:	
FRONT	25 FEET MIN
SIDE	15 FEET MIN
REAR	215 FEET MIN
PARKING:	30 SPACES REQUIRED 31 SPACES PROVIDED (29 STANDARD PACES + 2 ADA SPACES)
* SITE LIMITED TO 24 RESIDENTS	

13000 Park Blvd Site
 Conceptual Development Plan

Y:\P\NELAS\13000 Park Blvd Site (22-082)\Drawings\Concept\22-082 Conceptual Plan.dwg, 5/10/2023 2:50:25 PM

