

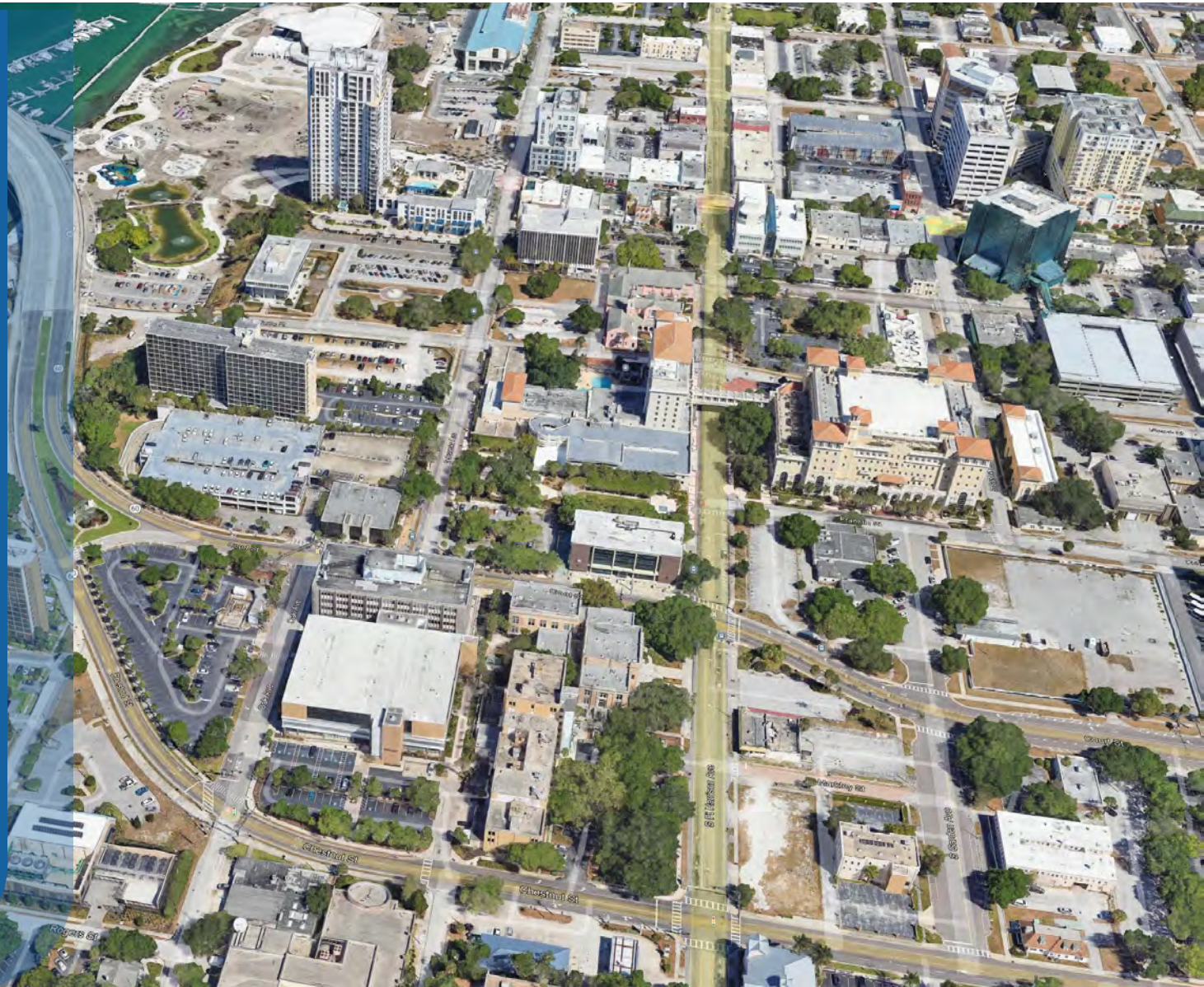


New Government Campus

PROGRESS TOUCHPOINT
Board of County
Commissioners
May 19, 2026



Williamson
Design
Associates



BUILDING DESIGN CONCEPTS

KEY BUILDING FAÇADE CONSIDERATIONS

Site & Orientation

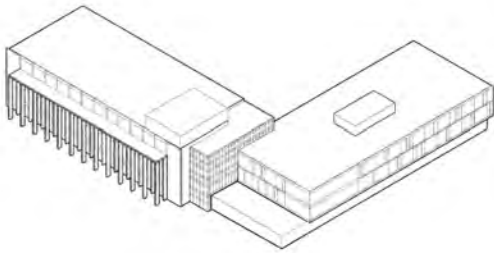
- Sun Path & Shading
 - Under 40% glazing to reduce heat gain
 - Reduce southern-facing glazing, and introduce shading elements
- Public Facades along Icot and Ulmerton
 - Maintain Civic frontage
 - Display a strong presence and firm anchor

Experience

- Differentiate Justice and Administration wings, while presenting as a single building
- Clear wayfinding and entry
- Connect interior program with exterior presence

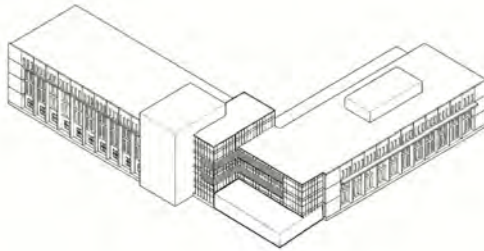
BUILDING DESIGN CONCEPTS

Projected Colonnade



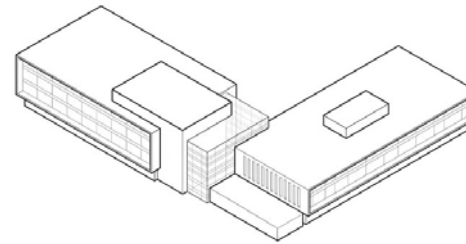
- Justice & Admin are unique
- Prominent Judicial façade
- Projected Colonnade

Recessed Colonnade



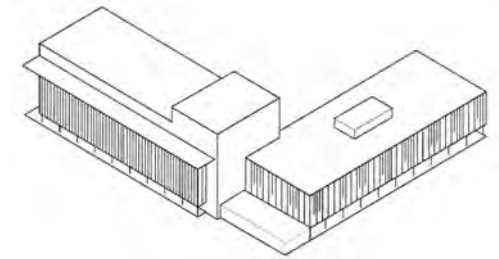
- Shared design language
- Recessed Colonnade

Picture Frame



- Shared design language
- Repeating façade elements

Expressive Screen

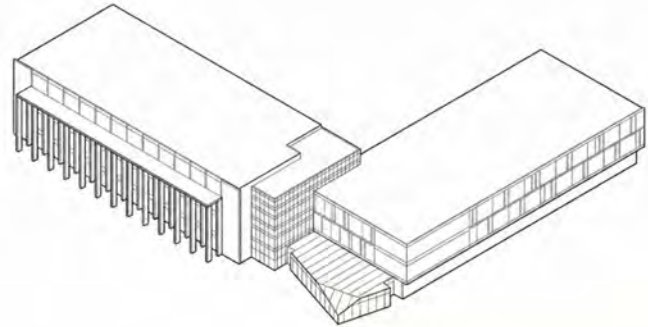


- Shared but distinct design languages
- Prominent Judicial façade
- Iconic identifiable appearance

PROJECTED COLONNADE

Design Highlights

- Justice & Admin are unique
- Prominent Judicial façade
- Projected Colonnade













RECESSED COLONNADE

Design Highlights

- Shared design language
- Recessed Colonnade









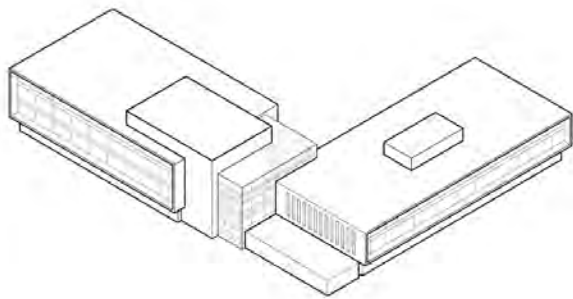




PICTURE FRAME

Design Highlights

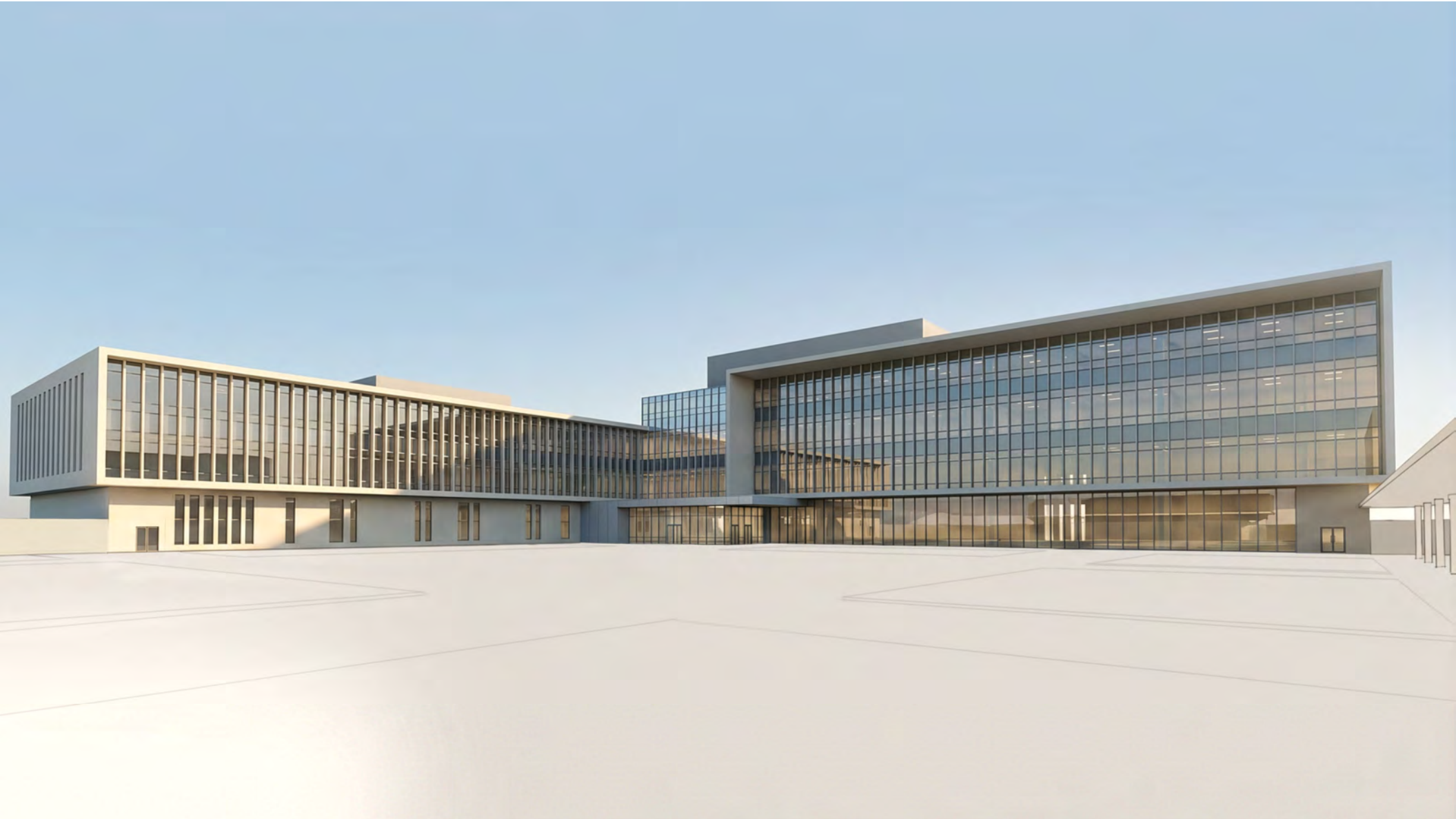
- Shared design language
- Repeating façade elements

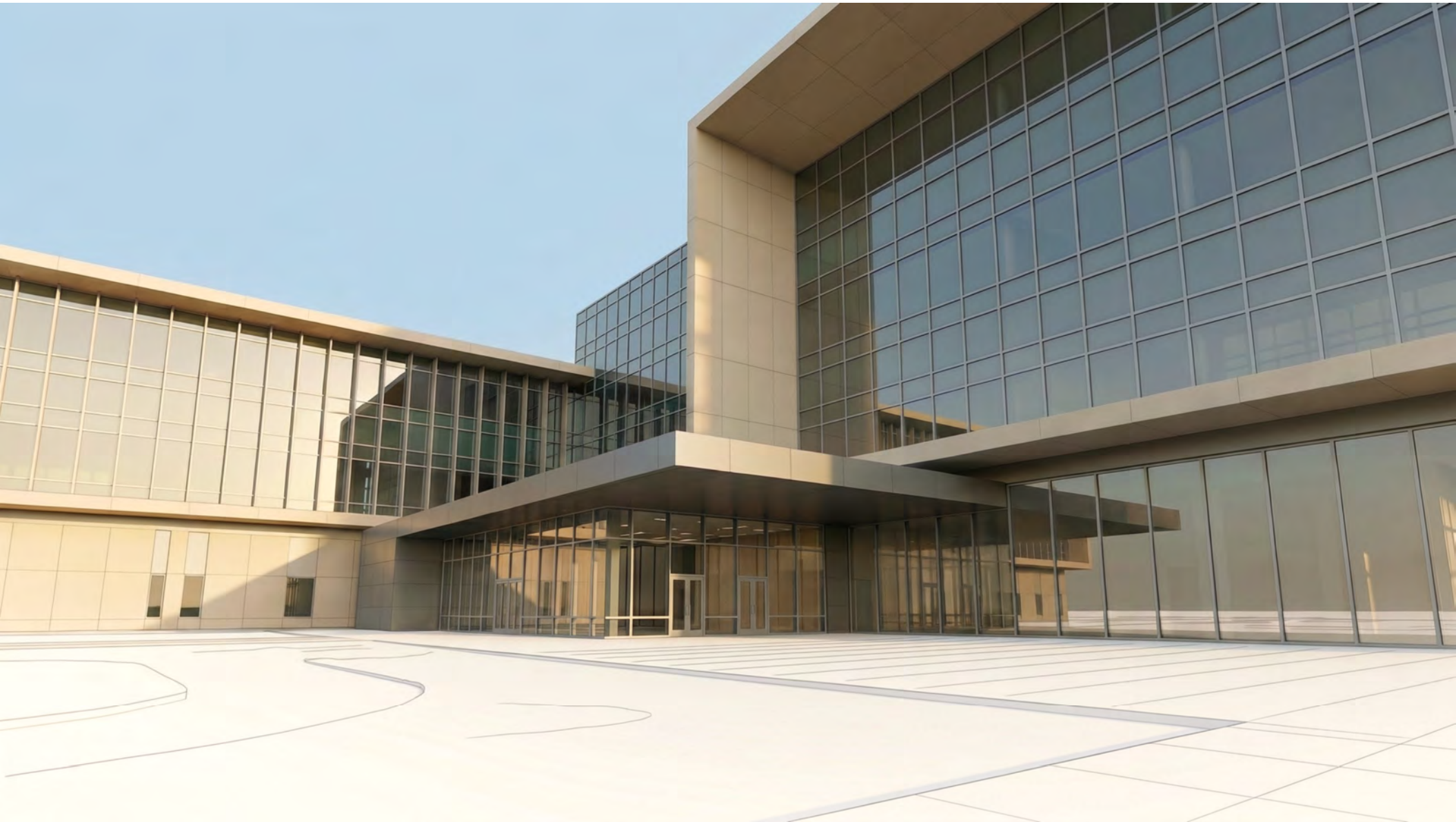








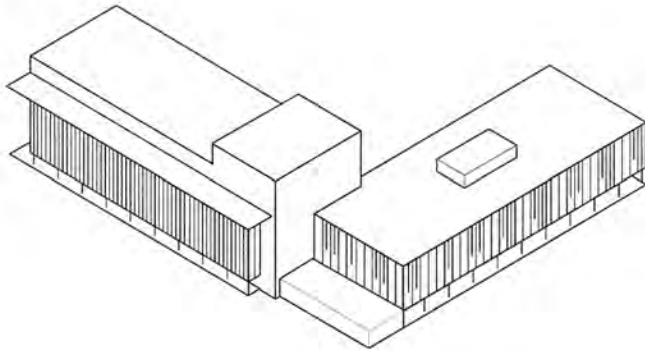




EXPRESSIVE SCREEN

Design Highlights

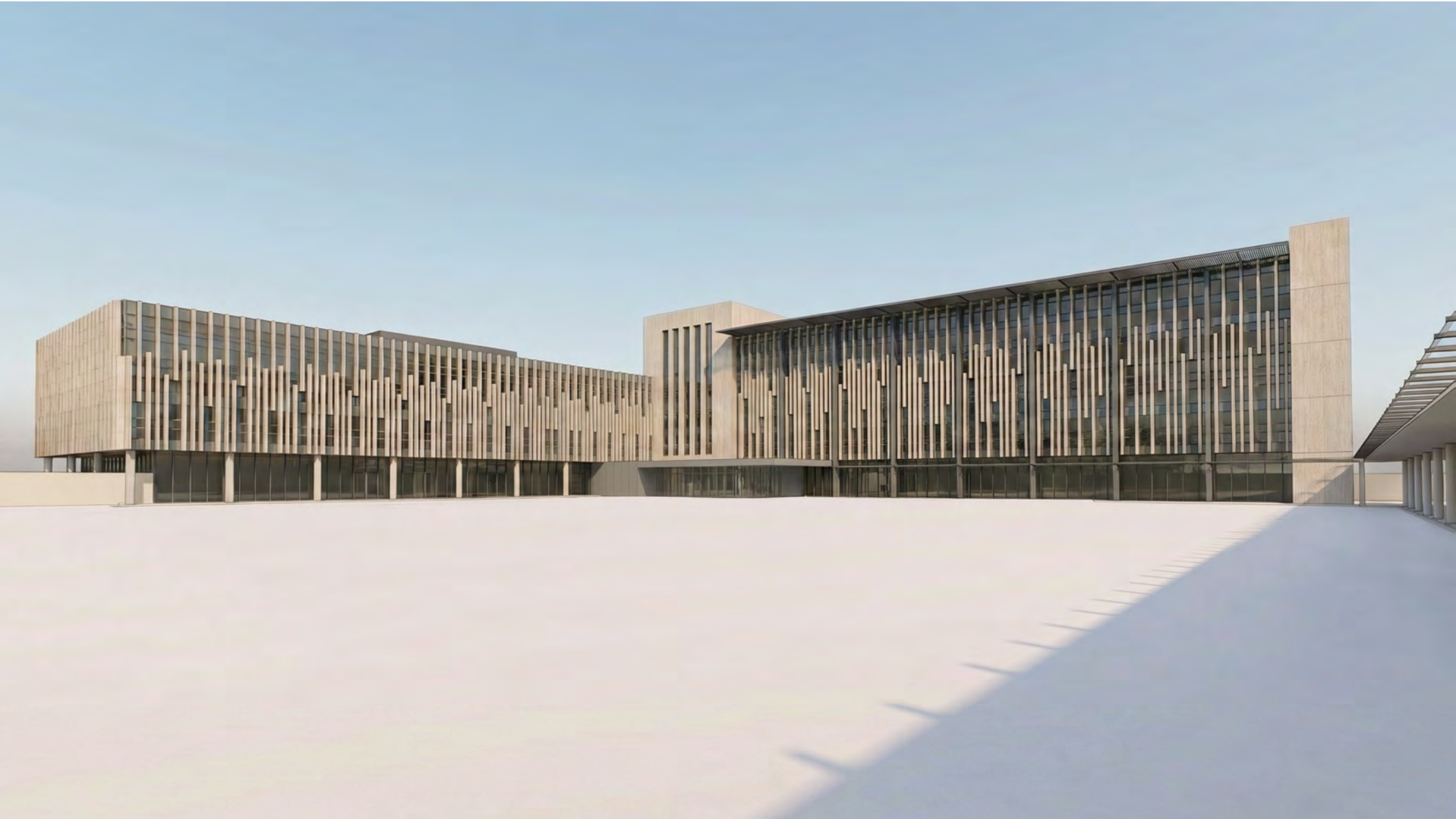
- Shared but distinct design languages
- Prominent Judicial façade
- Iconic identifiable appearance











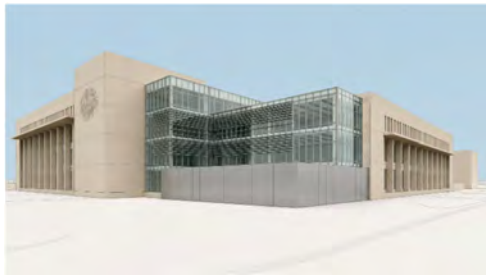


CONCEPT COMPARISON

Projected Colonnade



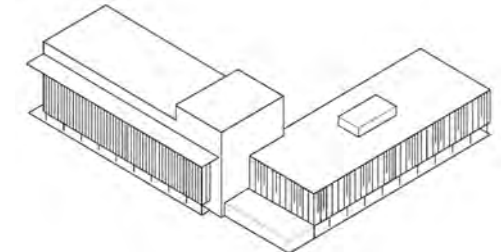
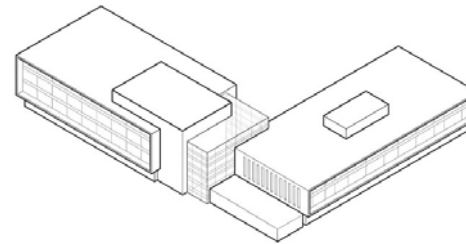
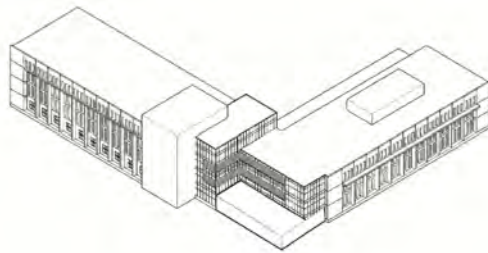
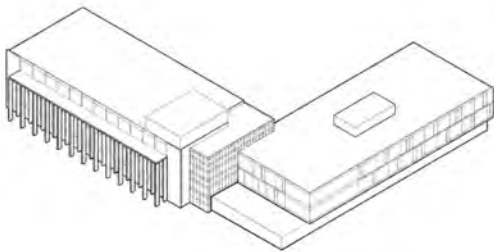
Recessed Colonnade



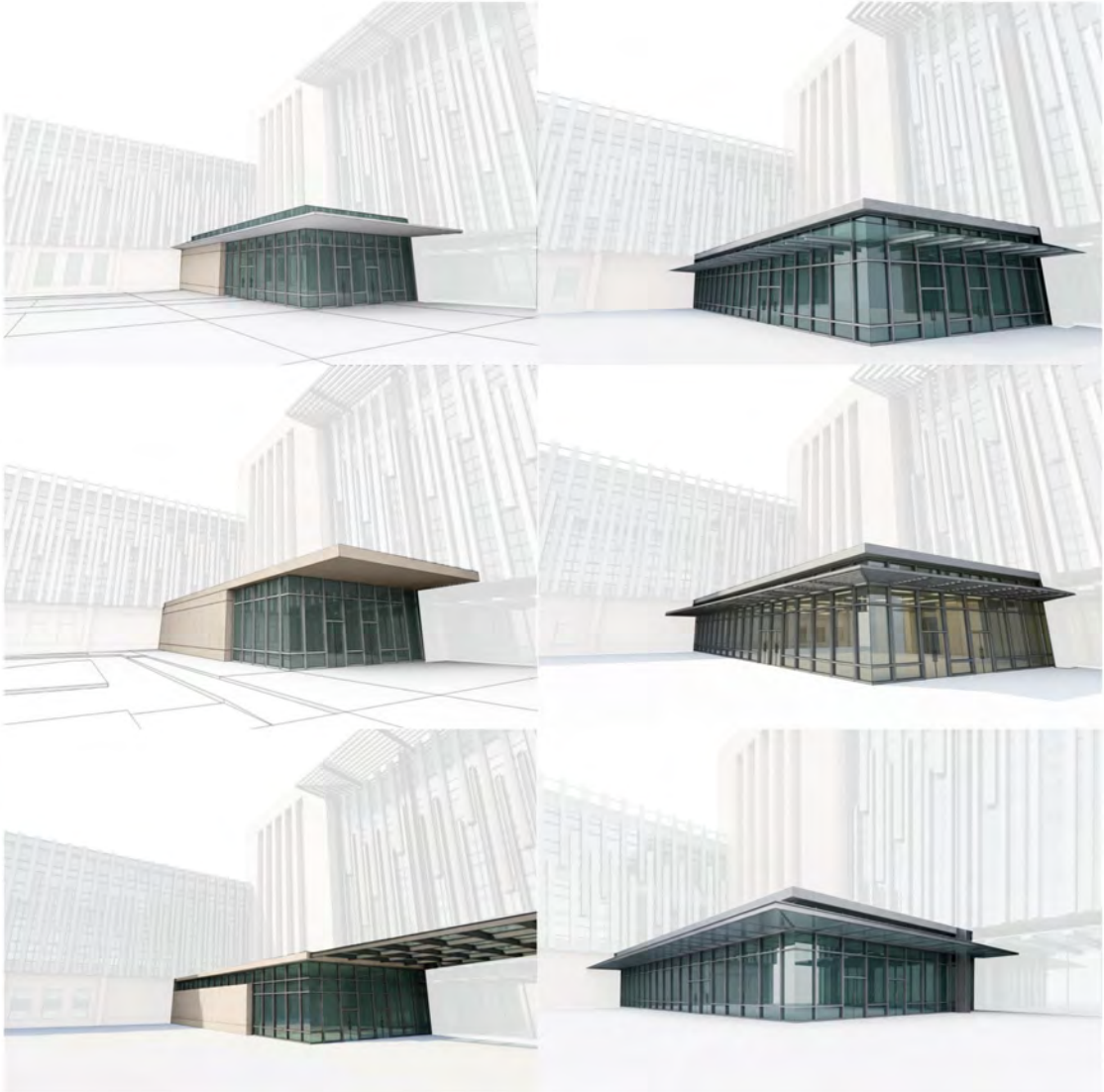
Picture Frame



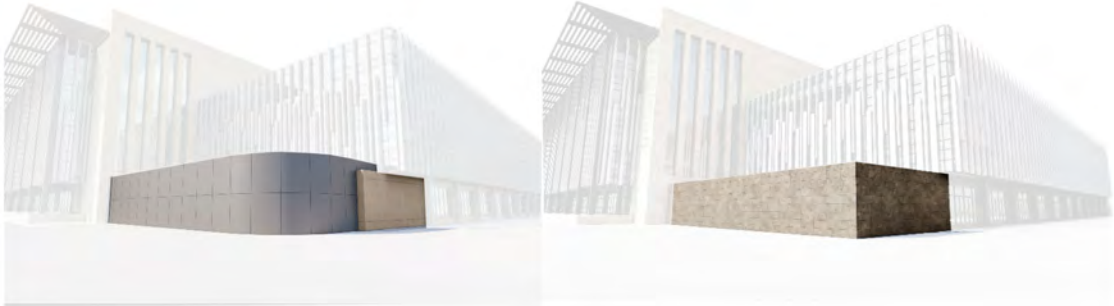
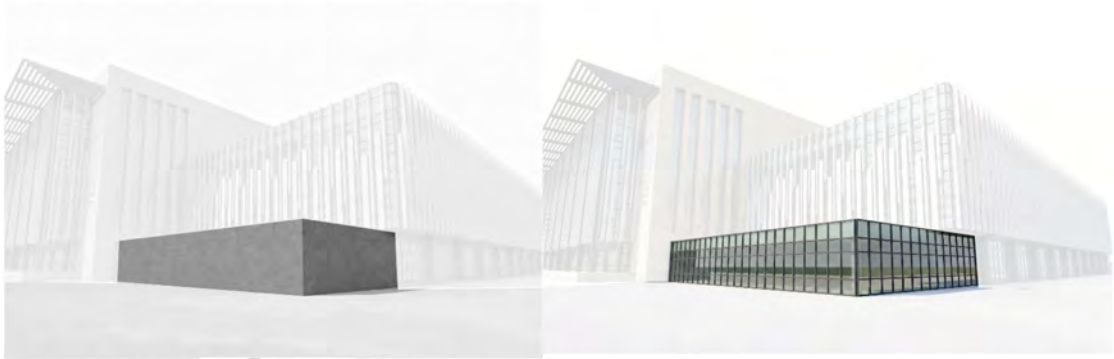
Expressive Screen



ENTRY STUDIES



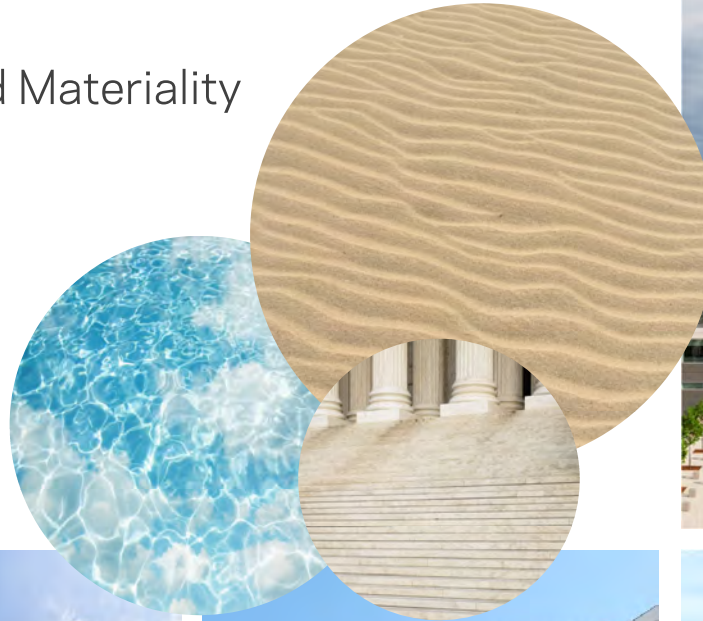
CHAMBER STUDIES



MATERIALITY

Modern Construction, Localized Materiality

- Resilient, long-lasting materials
- Local textures and color tones
- Contextual materials and systems
- Welcoming while remaining resolutely civic
- Easily identifiable to the public





Next Steps