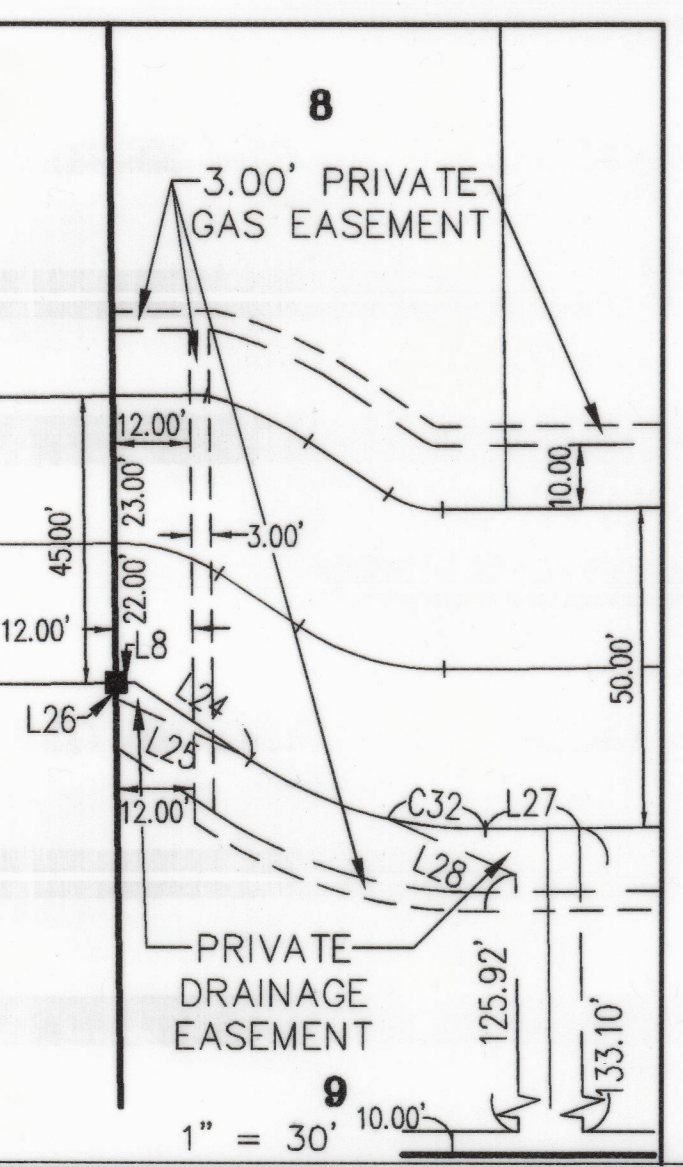
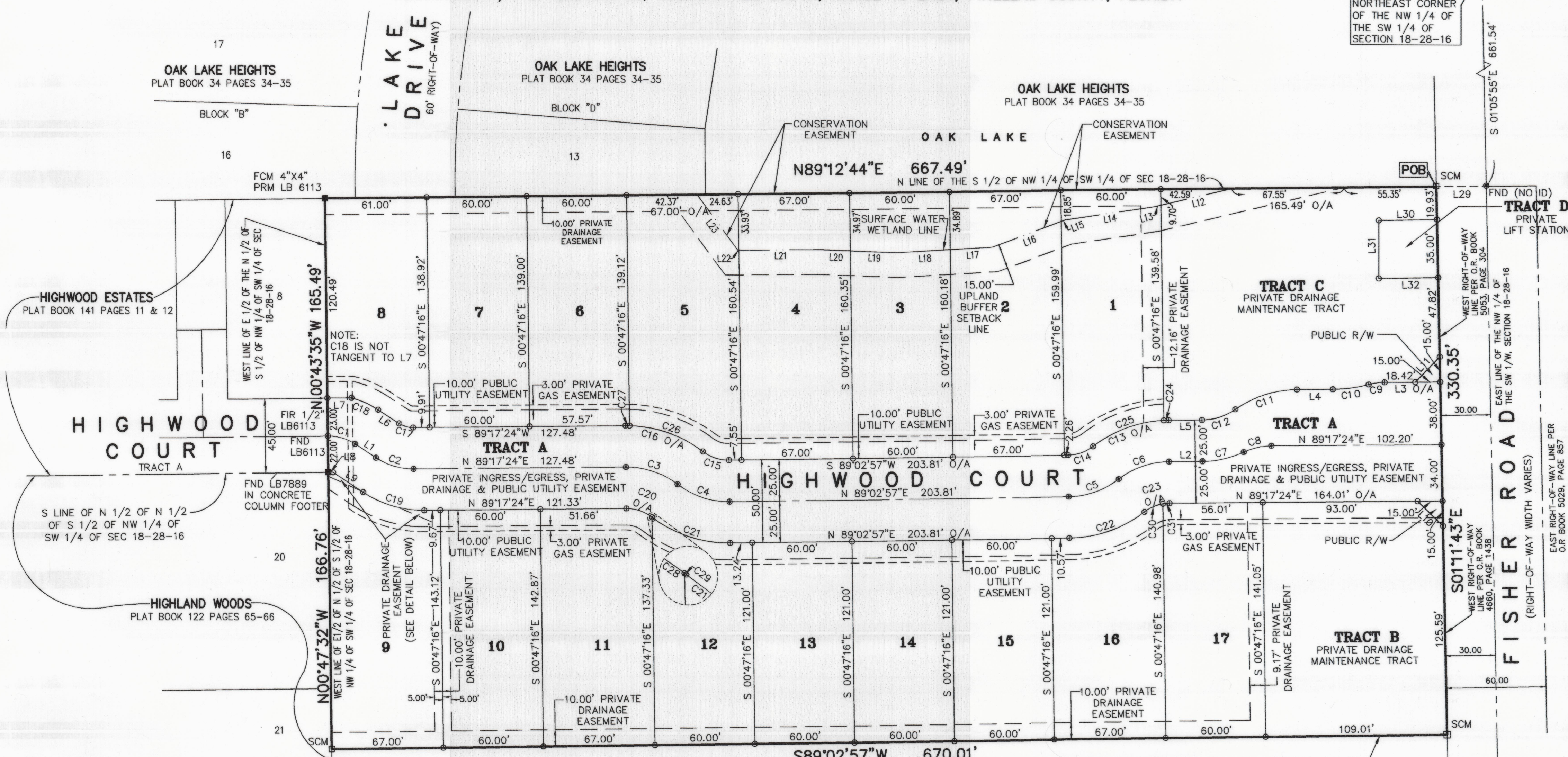


HIGHWOOD ESTATES PHASE 2

BEING A PORTION OF THE EAST 1/2 OF THE NORTH 1/2 OF THE SOUTH 1/2 OF THE NORTHWEST 1/4 OF THE SOUTHWEST 1/4 OF SECTION 18, TOWNSHIP 28 SOUTH, RANGE 16 EAST, PINELLAS COUNTY, FLORIDA

CURLEW ROAD

POC
NORTHEAST CORNER
OF THE NW 1/4 OF
THE SW 1/4 OF
SECTION 18-28-16

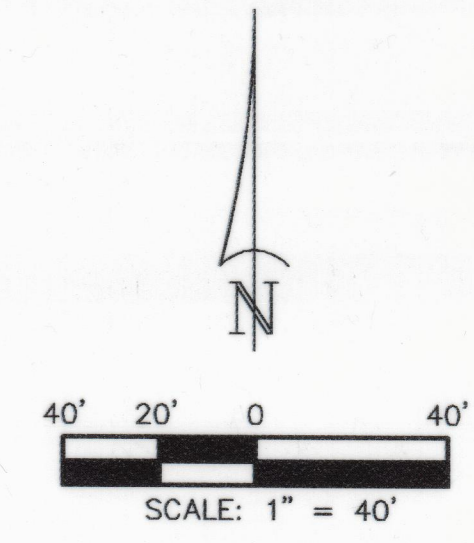


CURVE TABLE					
CURVE	RADIUS	ARC	DELTA	CHORD BEARING	CHORD
C1	29.01'	17.35'	34°15'35"	S73°39'51"E	17.09'
C2	40.00'	23.86'	34°10'32"	S73°37'20"E	23.51'
C3	50.00'	33.32'	38°10'52"	S71°37'10"E	32.71'
C4	50.00'	33.53'	38°25'19"	S71°44'23"E	32.90'
C5	50.00'	32.41'	37°08'19"	N70°28'47"E	31.85'
C6	50.00'	32.62'	37°22'47"	N70°36'01"E	32.04'
C7	60.00'	25.65'	24°29'41"	N77°02'34"E	25.46'
C8	40.00'	17.10'	24°29'41"	N77°02'34"E	16.97'
C9	38.00'	9.72'	14°39'07"	S81°57'51"W	9.69'
C10	85.00'	21.74'	14°39'07"	S81°57'51"W	21.68'
C11	65.00'	39.61'	34°54'55"	S71°49'57"W	39.00'
C12	35.00'	21.33'	34°54'55"	S71°49'57"W	21.00'
C13	75.00'	48.93'	37°22'47"	S70°36'01"W	48.07'
C14	25.00'	16.20'	37°08'19"	S70°28'47"W	15.92'
C15	25.00'	16.76'	38°25'19"	N71°44'23"W	16.45'
C16	75.00'	49.98'	38°10'52"	N71°37'10"W	49.06'
C17	15.00'	8.95'	34°10'32"	N73°37'20"W	8.82'
C18	54.01'	17.55'	18°37'10"	N65°50'39"W	17.48'
C19	65.00'	38.77'	34°10'32"	S73°37'20"E	38.20'
C20	25.00'	16.66'	38°10'52"	S71°37'10"E	16.35'
C21	75.00'	50.29'	38°25'19"	S71°44'23"E	49.36'
C22	75.00'	48.61'	37°08'19"	N70°28'47"E	47.77'
C23	25.00'	16.31'	37°22'47"	N70°36'01"E	16.02'
C24	75.00'	2.89'	2°12'41"	S88°11'04"W	2.89'
C25	75.00'	46.04'	35°10'06"	S69°29'41"W	45.32'
C26	75.00'	47.54'	36°19'15"	N70°41'21"W	46.75'
C27	75.00'	2.44'	1°51'37"	N89°46'47"W	2.43'
C28	25.00'	16.52'	37°51'59"	S71°46'36"E	16.22'
C29	25.00'	0.14'	0°18'53"	S52°41'10"E	0.14'
C30	25.00'	12.30'	28°11'48"	N66°00'32"E	12.18'
C31	25.00'	4.01'	9°10'59"	N84°41'55"E	4.00'
C32	65.00'	15.37'	13°32'47"	S83°56'12"E	15.33'

LINE TABLE		
LINE	BEARING	LENGTH
L1	S56°32'04"E	15.01'
L2	N89°17'24"E	20.07'
L3	S89°17'24"W	33.42'
L4	S89°17'24"W	21.57'
L5	S89°17'24"W	20.07'
L6	N56°32'04"W	15.01'
L7	S89°12'21"W	14.53'
L8	N89°12'21"E	2.99'
L9	S56°32'04"E	21.60'
L10	N45°57'09"W	21.30'
L11	N44°02'51"E	21.12'
L12	S76°22'56"W	43.68'
L13	S76°22'56"W	4.36'
L14	S81°24'11"W	53.82'
L15	S69°37'38"W	2.58'
L16	S69°37'38"W	44.28'
L17	S86°29'36"W	25.31'
L18	S86°29'36"W	31.75'
L19	N87°54'23"W	28.32'
L20	N87°54'23"W	17.95'
L21	S89°22'28"W	49.07'
L22	S89°22'28"W	0.57'
L23	N36°08'06"W	41.60'
L24	S56°32'04"E	20.29'
L25	N66°18'15"W	21.72'
L26	N00°47'32"W	2.42'
L27	N89°17'24"E	14.67'
L28	N66°18'15"W	21.86'
L29	S89°12'44"W	30.00'
L30	S88°48'17"W	35.00'
L31	S00°00'39"W	35.01'
L32	N88°48'17"E	35.74'

NOT PLATTED SOUTH LINE OF THE NORTH 1/2 OF THE SOUTH 1/2 OF THE NW 1/4 OF THE SW 1/4 OF SEC 18-28-16

LEGEND		
⊙	SET NAIL & DISK LB 6113 (PCP)	
○	SET 1/2" IRON ROD & CAP LB 6113	
●	FOUND IRON ROD & CAP	
□	SET 4"x4" CONCRETE MONUMENT STAMPED PRM LB 6113	
■	PERMANENT REFERENCE MONUMENT	
(C)	CALCULATED	
DBA	DOING BUSINESS AS	
FCM	FOUND CONCRETE MONUMENT	
FOT	FLORIDA DEPARTMENT OF TRANSPORTATION	
FND	FOUND NAIL & DISK	
ID	IDENTIFICATION	
O/A	OVERALL	
LB	LICENSED BUSINESS NUMBER	
NO.	NUMBER	
(NR)	NON RADIAL	
O.R.	OFFICIAL RECORD	
PG	PAGE	
PCP	PERMANENT CONTROL POINT	
PRM	PERMANENT REFERENCE MONUMENT	
PB	PLAT BOOK	
POC	POINT OF COMMENCEMENT	
POB	POINT OF BEGINNING	
PSM	PROFESSIONAL SURVEYOR MAPPER	
PLS	PROFESSIONAL LAND SURVEYOR	
(R)	RADIAL	
R/W	RIGHT-OF-WAY	
SCM	SET CONCRETE MONUMENT	
SR	STATE ROAD	
S/W	SIDEWALK	
---	RIGHT-OF-WAY LINE	



SEE SHEET 2 FOR NOTES

POLARIS ASSOCIATES INC.
 PROFESSIONAL SURVEYING LB 6113
 2165 SUNNYDALE BLVD. SUITE D
 CLEARWATER, FLORIDA 33765
 PH (727) 461-6113 FX (727)-461-6669
 POLARIS JN: 4592-02 SHEET 3 OF 3

SEC 18-28-16 = SECTION 18, TOWNSHIP 28 SOUTH, RANGE 16 EAST