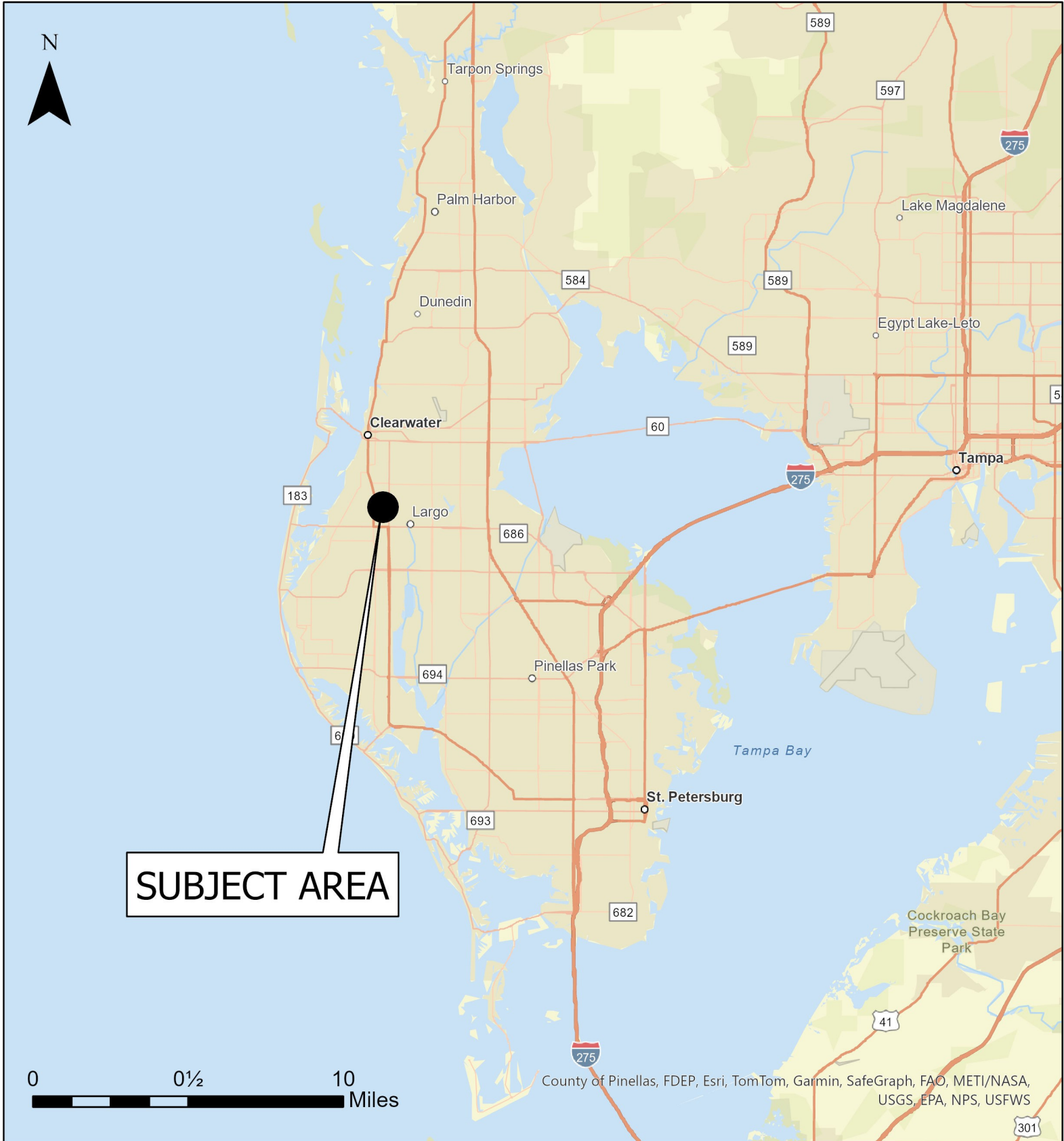


# Case CW26-05

## Map 1: Location Map



**JURISDICTION: Largo**

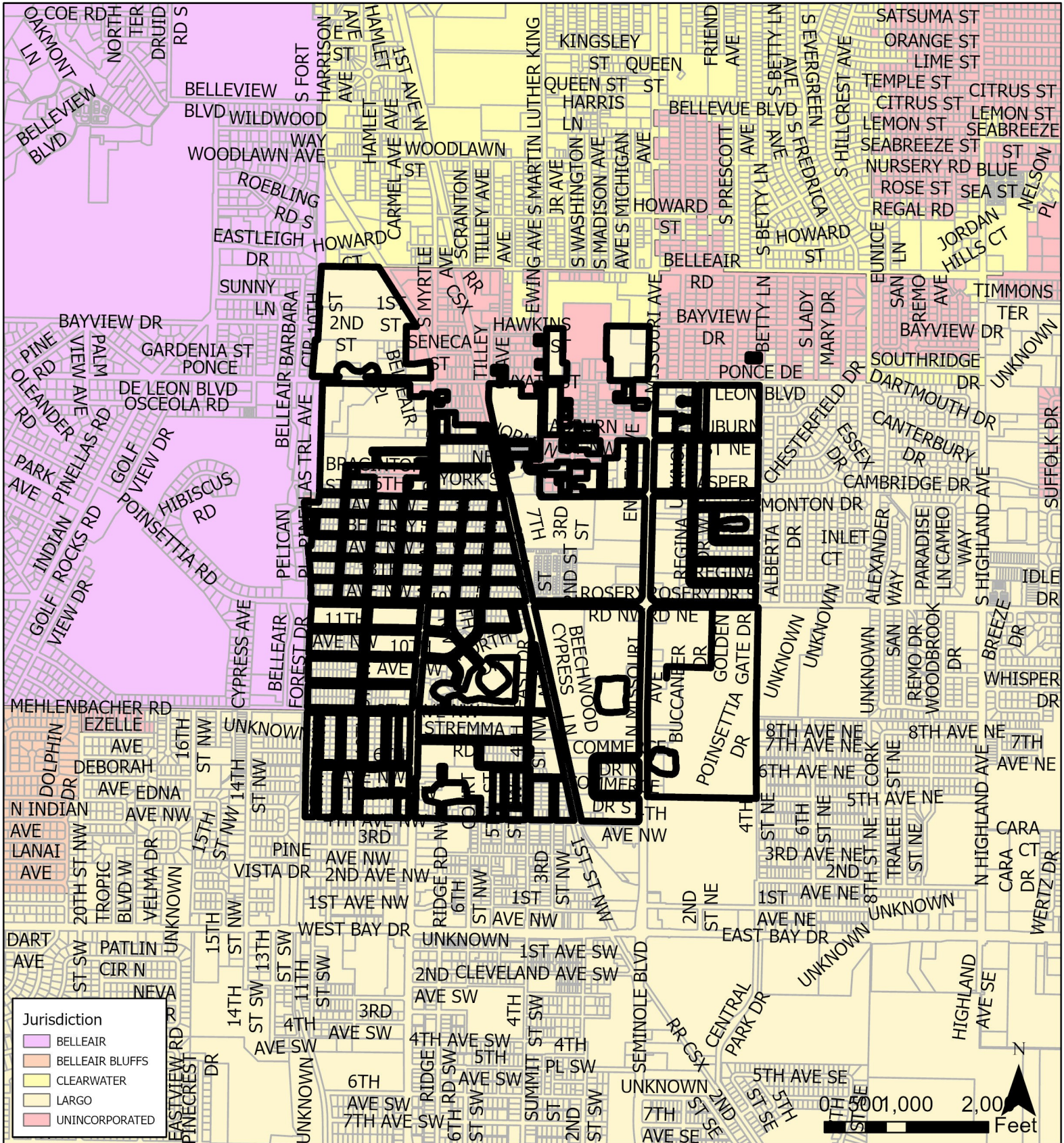
**AREA: 540 acres m.o.l.**

**FROM: Activity Center, Residential Low Medium, Residential Medium, Retail & Services, Office, Employment, Public/Semi-Public, and Recreation/Open Space**

**TO: Activity Center**

# Case CW26-05

## Map 2: Jurisdictional Map



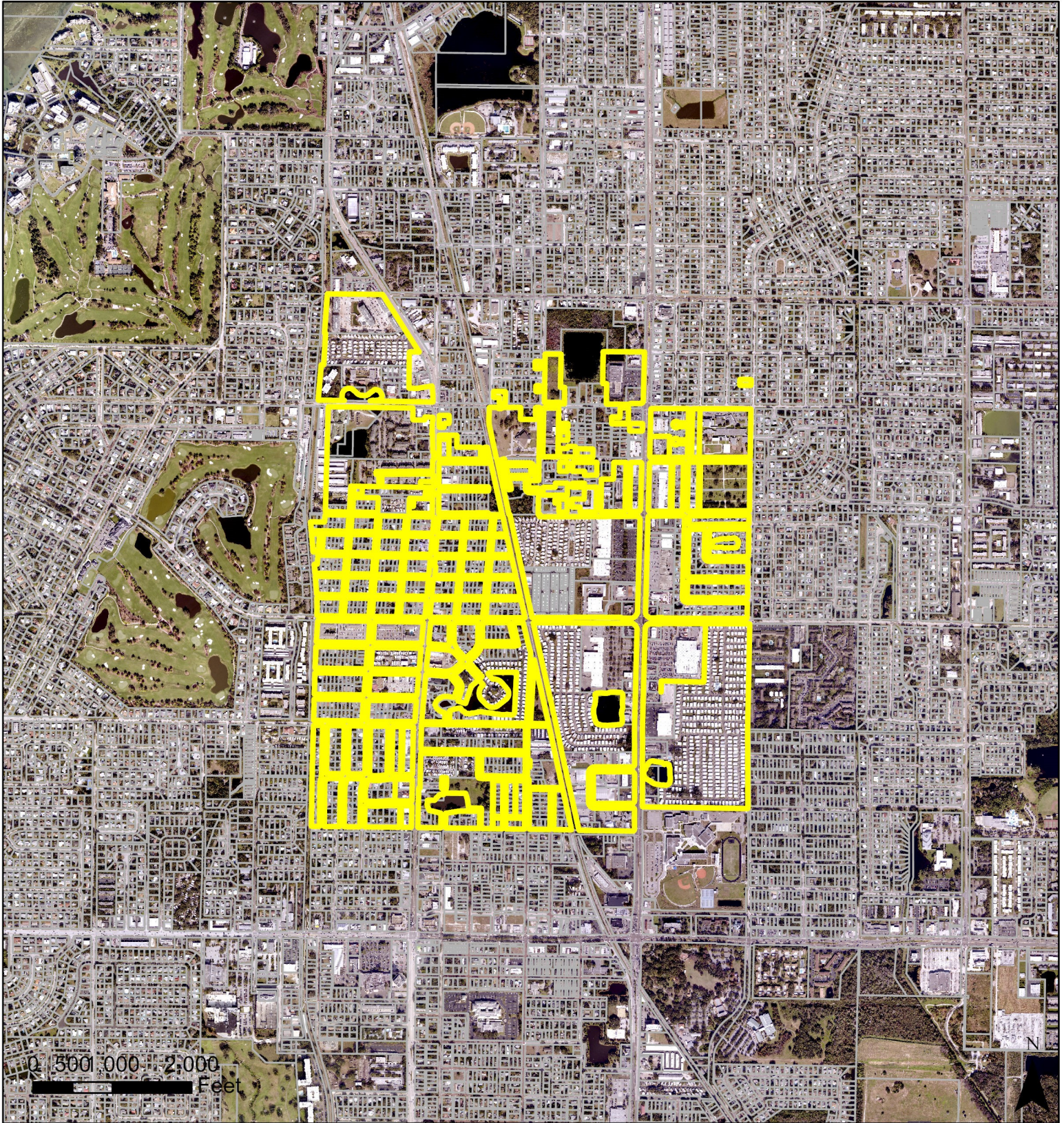
**JURISDICTION:** Largo  
**AREA:** 540 acres m.o.l.

**FROM:** Activity Center, Residential Low Medium, Residential Medium, Retail & Services, Office, Employment, Public/Semi-Public, and Recreation/Open Space

**TO:** Activity Center

# Case CW26-05

## Map 3: Aerial Map



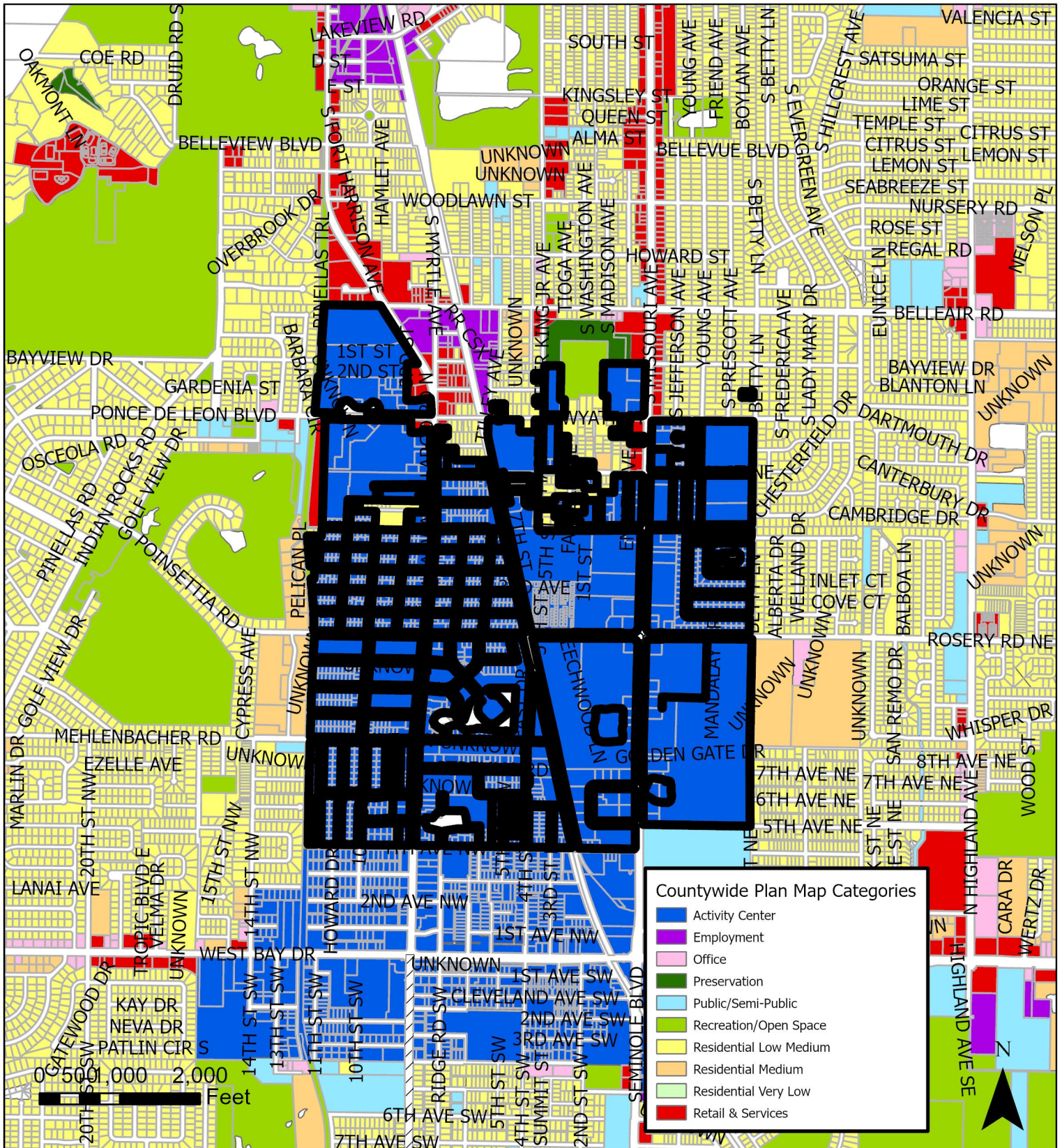
**JURISDICTION:** Largo

**AREA:** 540 acres m.o.l.

**FROM:** Activity Center, Residential Low Medium, Residential Medium, Retail & Services, Office, Employment, Public/Semi-Public, and Recreation/Open Space

**TO:** Activity Center





**JURISDICTION:** Largo

**FROM:** Activity Center, Residential Low Medium, Residential Medium, Retail & Services, Office, Employment, Public/Semi-Public, and Recreation/Open Space

**TO:** Activity Center