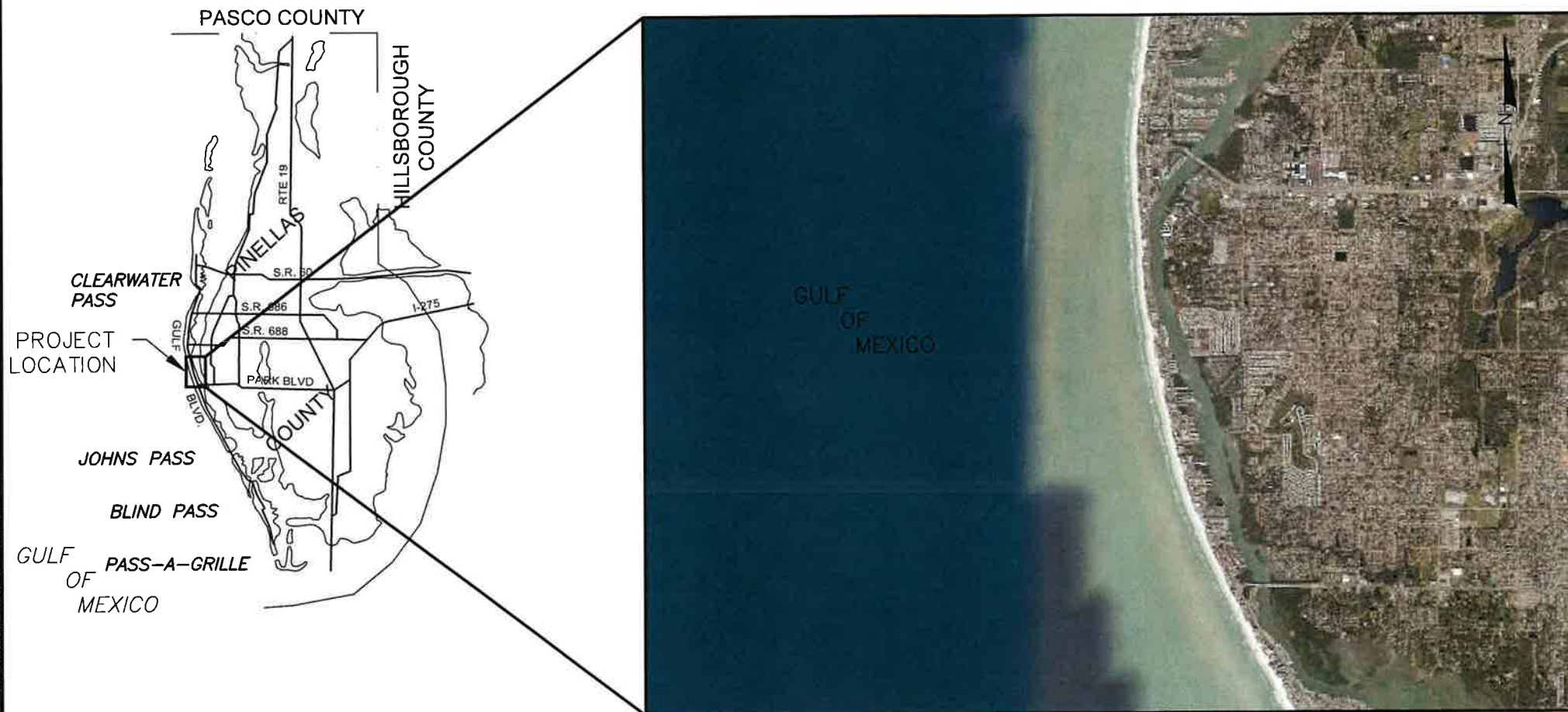
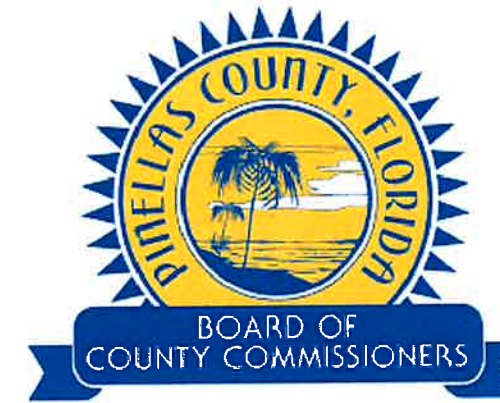




PINELLAS COUNTY, FLORIDA POST IDALIA EMERGENCY SHORE STABILIZATION INDIAN SHORES BEACH PID No. 006241A



PINELLAS COUNTY COMMISSION	
JANET C. LONG	DISTRICT 1 2023 CHAIR
BRIAN SCOTT	DISTRICT 2
CHARLIE JUSTICE	DISTRICT 3
DAVE EGGERS	DISTRICT 4
CHRIS LATVALA	DISTRICT 5
KATHLEEN PETERS	DISTRICT 6 2023 VICE CHAIR
RENE' FLOWERS	DISTRICT 7

SHEET INDEX	
NO.	TITLE
1.	COVER SHEET
2.	CONTROL DATA
3.-13.	PLAN VIEWS
14.-21.	CROSS SECTIONS



Aptim Environmental & Infrastructure, LLC

6401 CONGRESS AVENUE, SUITE 140
BOCA RATON, FLORIDA 33487
www.aptim.com



PH. (561) 391-8102
FAX (561) 391-9116
C.O.A. FL. #9317
C.O.A. LA. #2531

CERTIFICATION
I CERTIFY THAT THESE PLANS ARE IN COMPLIANCE
WITH THE APPLICABLE SECTIONS OF 62B-41, F.A.C.

Nicole S. Sharp
NICOLE S. SHARP P.E. NO. 74708

2/5/23
DATE

P:\Projects\Indian Shores Beach Emergency Repair Project\CAD\CONSTRUCTION\INDIAN SHORES BEACH EMERGENCY BEACH REPAIR-CONST.DWG - Dec 04, 2015 @ 3:32pm - Aulus Brant



Aptim Environmental & Infrastructure, LLC
 PH (561) 391-4102
 FAX (561) 391-9116
 C.O.A. FL #9337
 C.O.A. LA #2531

6401 CONGRESS AVENUE, SUITE 140
 BOCA RATON, FLORIDA 33487
 www.aptim.com

REVISIONS	
No.	Description

Reference Files:
 Designed by: NS
 Drawn by: JEB
 Date: 12/04/23
 Pkg. Scale: AS NOTED
 Checked by: NS
 Reviewed by: NS
 Submitted by: NS
 Date: XXXXXX
 Pkg. No.: XXXXXX

INDIAN SHORES BEACH
 EMERGENCY REPAIR PROJECT
 PINELLAS COUNTY, FLORIDA

PLAN VIEW

DRAWING NO.
PV-1

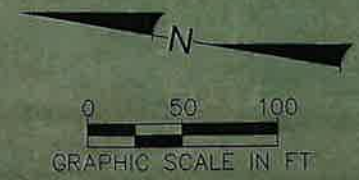
SHEET 3 OF 21



CERTIFICATION
 I CERTIFY THAT THESE PLANS ARE IN COMPLIANCE
 WITH THE APPLICABLE SECTIONS OF 62B-41, F.A.C.

[Signature]
 NICOLE S. SHARP P.E. NO. 74708

12/5/23
 DATE



Aptim Environmental & Infrastructure, LLC
 PH. (861) 391-8102
 FAX (861) 391-9116
 C.O.A. FL. #9317
 C.O.A. LA. #2531

6401 CONGRESS AVENUE, SUITE 140
 BOCA RATON, FLORIDA 33487
 www.aptim.com

REVISIONS	No.	Date	Description

Checked by: NS	Designed by: NS
Reviewed by: NS	Drawn by: JEB
Submitted by: NS	Date: 12/04/23
Comm. No: XXXXXX	Plot Scale: AS NOTED

INDIAN SHORES BEACH
 EMERGENCY REPAIR PROJECT
 PINELLAS COUNTY, FLORIDA

PLAN VIEW

DRAWING NO. PV-2
 SHEET 4 OF 21

LEGEND

DRIVE ON ACCESS, 20' WIDE TO BE FIELD FIT

NOTES:
 1. FILL LIMITS WILL BE FIELD ADJUSTED AS DIRECTED BY ENGINEER.

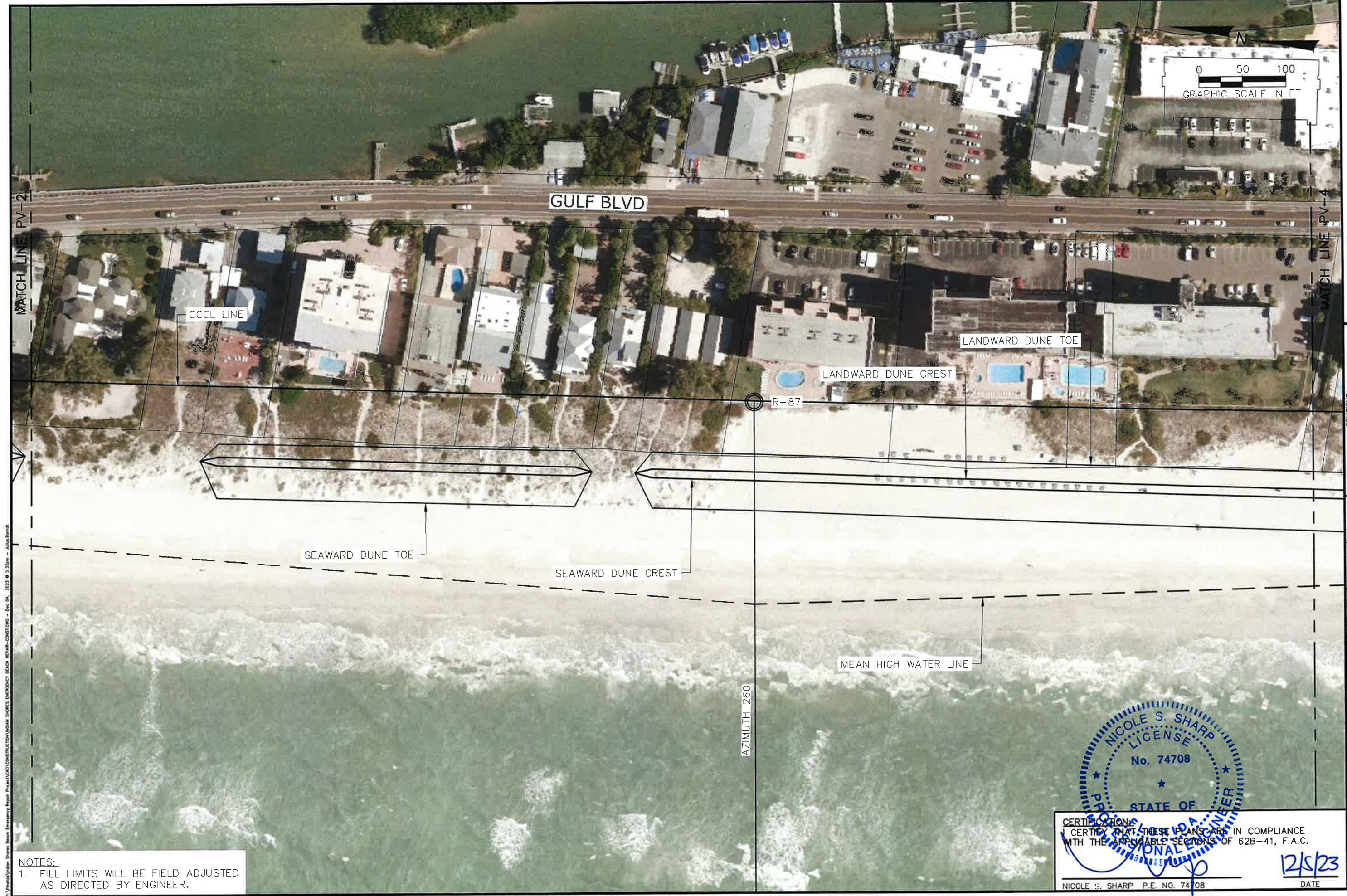
NICOLE S. SHARP
 LICENSE
 No. 74708
 STATE OF FLORIDA
 PROFESSIONAL ENGINEER

CERTIFICATION:
 I CERTIFY THAT THESE PLANS ARE IN COMPLIANCE WITH THE APPLICABLE SECTIONS OF 62B-41, F.A.C.

12/5/23

NICOLE S. SHARP P.E. NO. 74708

C:\Users\sharps\OneDrive\Documents\Projects\2023\INDIAN SHORES BEACH EMERGENCY BEACH REPAIR-CONSTRUCTION - Oct 24, 2023 @ 1:32pm - Alan Bland



P:\Projects\Indian Shores Beach Emergency Repair Project\CAD\CONSTRUCTION\WDM SHORES EMERGENCY BEACH REPAIR-COAST.DWG - Dec 24, 2023 @ 3:32pm - AutoCAD

NOTES:
 1. FILL LIMITS WILL BE FIELD ADJUSTED AS DIRECTED BY ENGINEER.

NICOLE S. SHARP P.E. NO. 74708
 DATE 12/5/23

CERTIFICATION:
 I CERTIFY THAT THESE PLANS ARE IN COMPLIANCE WITH THE APPLICABLE SECTIONS OF 62B-41, F.A.C.

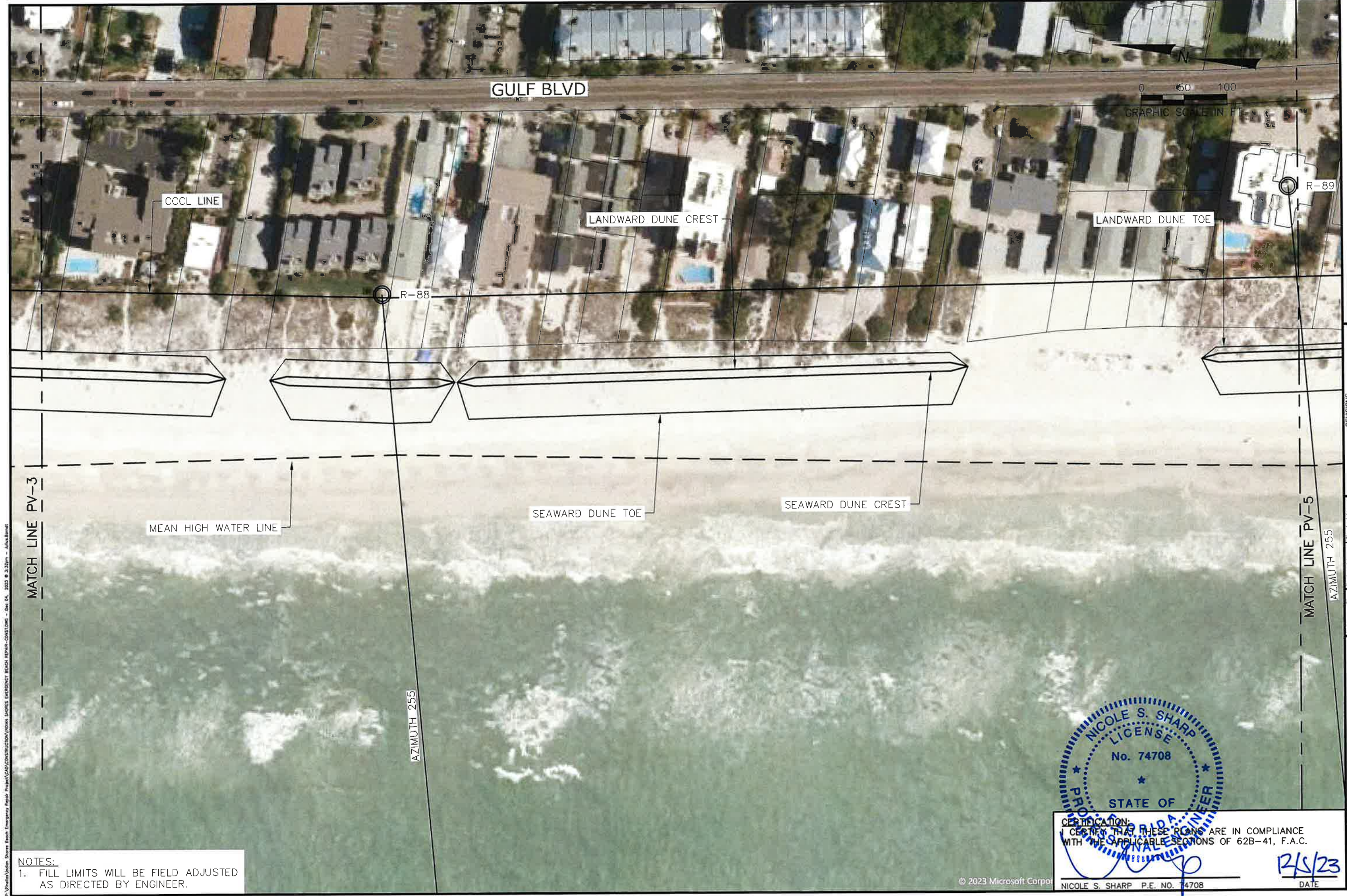
Aptim Environmental & Infrastructure, LLC
 PH: (561) 391-9102
 FAX: (561) 391-9116
 C.O.A. FL #9317
 C.O.A. LA #2531
 6401 CONGRESS AVENUE, SUITE 140
 BOCA RATON, FLORIDA 33487
 www.aptim.com

REVISIONS	No.	Date	Description

Designed by	NS	Checked by	NS
Drawn by	JEB	Reviewed by	NS
Date	12/04/23	Submitted by	NS
Plot Scale	AS NOTED	Comm. No.	XXXXXXXXXX

INDIAN SHORES BEACH
 EMERGENCY REPAIR PROJECT
 PINELLAS COUNTY, FLORIDA
 PLAN VIEW

DRAWING NO.
PV-3
 SHEET 5 OF 21



P:\Urban\Indian Shores Beach Emergency Repair Project\CAD\CONSTRUCTION\INDIAN SHORES EMERGENCY BEACH REPAIR-CONST.DWG - Det 04, 2023 @ 3:32pm - John Bennett

NOTES:
 1. FILL LIMITS WILL BE FIELD ADJUSTED AS DIRECTED BY ENGINEER.

**INDIAN SHORES BEACH
 EMERGENCY REPAIR PROJECT
 PINELLAS COUNTY, FLORIDA**
 STATE OF
 PROFESSIONAL ENGINEER
 NICOLE S. SHARP
 LICENSE
 No. 74708

CERTIFICATION:
 I CERTIFY THAT THESE PLANS ARE IN COMPLIANCE WITH THE APPLICABLE SECTIONS OF 62B-41, F.A.C.

NICOLE S. SHARP P.E. NO. 74708
 12/5/23
 DATE

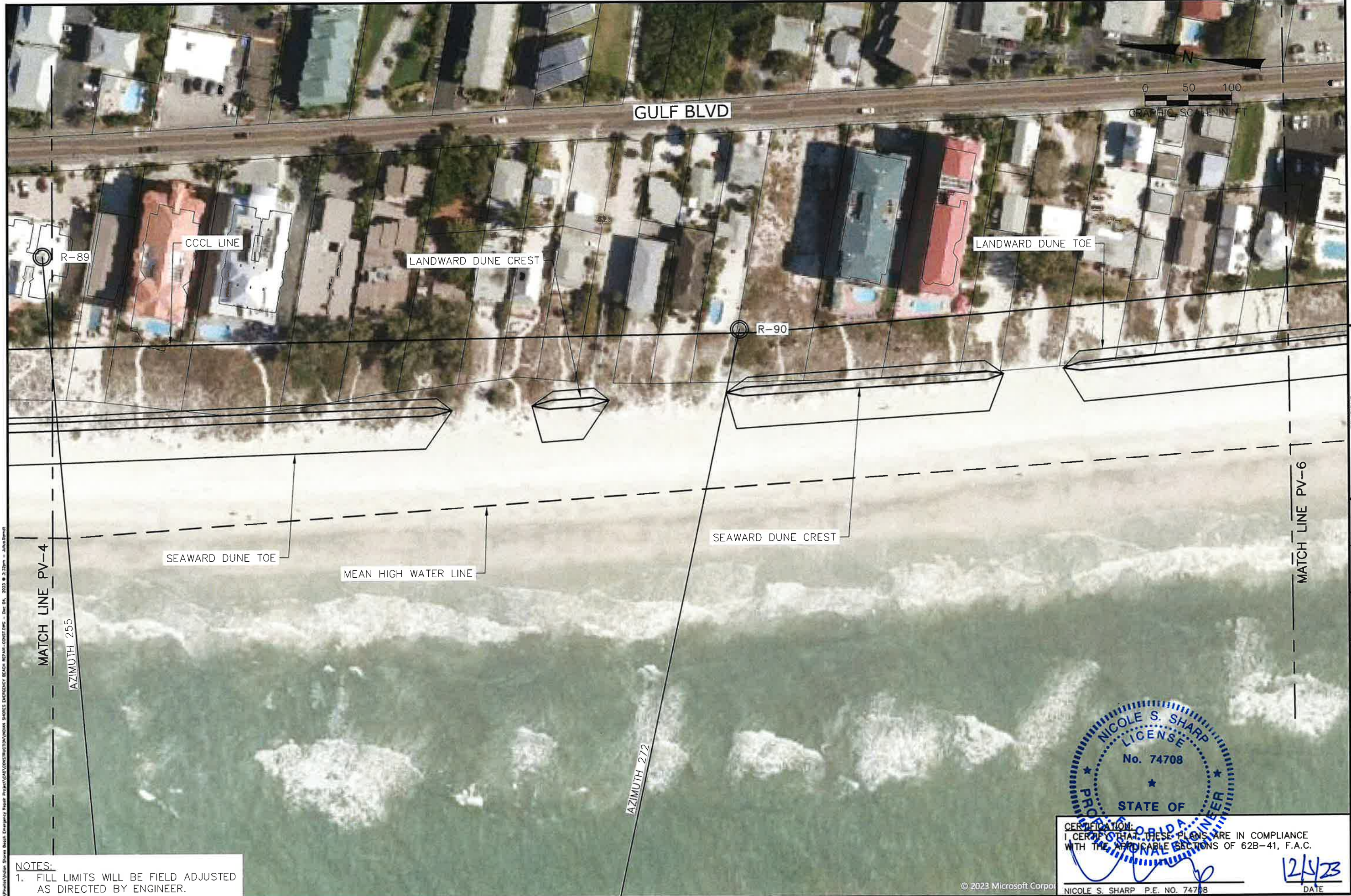
Aptim Environmental & Infrastructure, LLC
 PH: (561) 391-8102
 FAX: (561) 391-9116
 C.O.A. P.L. #9317
 C.O.A. L.A. #2311

6401 CONGRESS AVENUE, SUITE 140
 BOCA RATON, FLORIDA 33487
 www.apitim.com

Reference Files	Designed by	Checked by	Drawn by	Reviewed by	Submitted by	Date	Per. No.	Exam. No.	No.	Date	Description
	NS	NS	JEB	NS	NS	12/04/23	AS NOTED	XXXXXXX			

INDIAN SHORES BEACH
 EMERGENCY REPAIR PROJECT
 PINELLAS COUNTY, FLORIDA
 PLAN VIEW

DRAWING NO.
PV-4
 SHEET 6 OF 21



NOTES:
 1. FILL LIMITS WILL BE FIELD ADJUSTED AS DIRECTED BY ENGINEER.

NICOLE S. SHARP
 LICENSE
 No. 74708
 STATE OF
 FLORIDA
 PROFESSIONAL ENGINEER

I CERTIFY THAT THESE PLANS ARE IN COMPLIANCE WITH THE APPLICABLE SECTIONS OF 62B-41, F.A.C.

DATE: 12/1/23
 NICOLE S. SHARP P.E. NO. 74708

Aptim Environmental & Infrastructure, LLC
 PH. (561) 391-8102
 FAX (561) 391-9116
 C.O.A. FL. #9317
 C.O.A. LA. #2531
 6401 CONGRESS AVENUE, SUITE 140
 BOCA RATON, FLORIDA 33487
 www.aptim.com

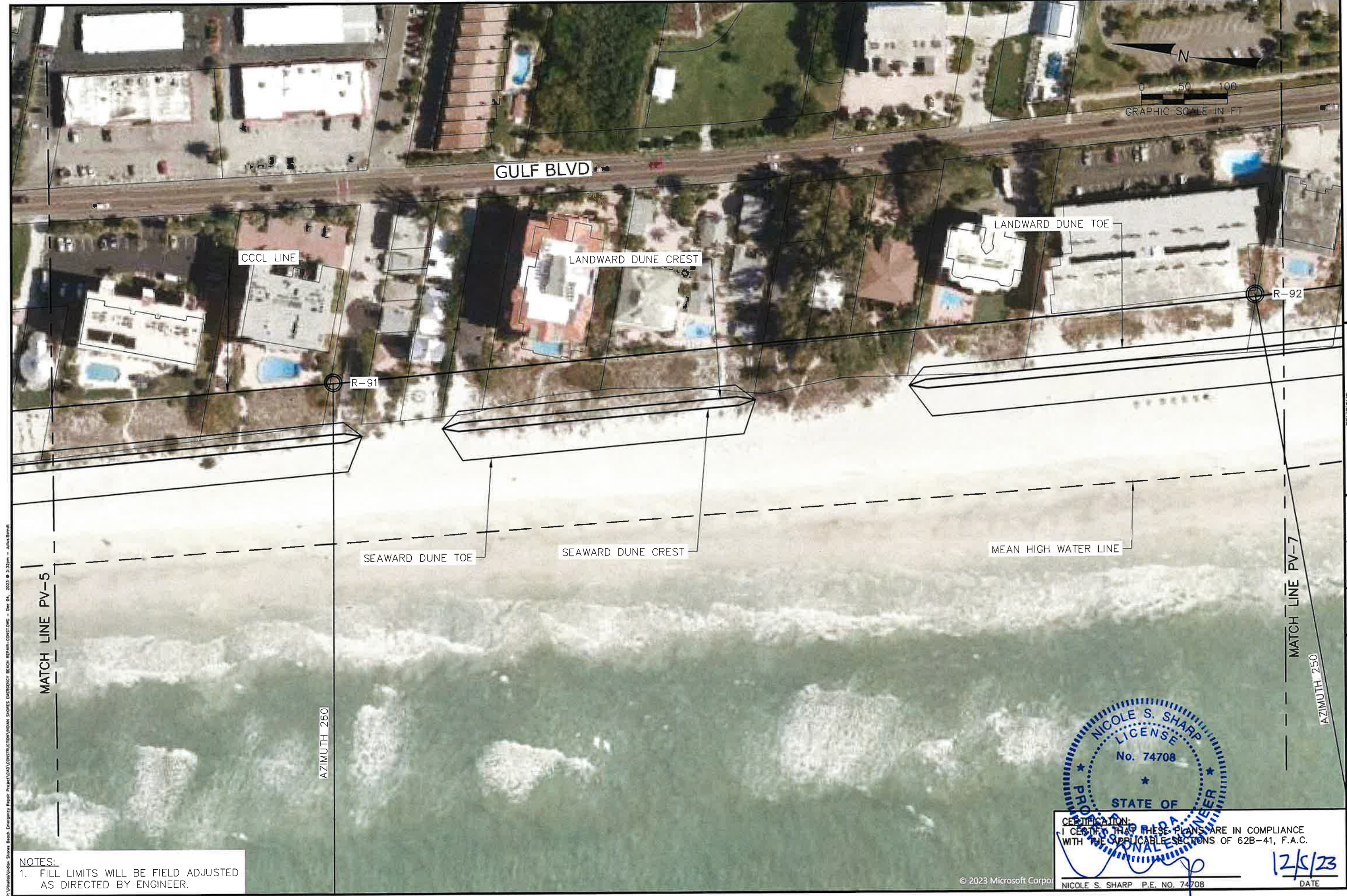
REVISIONS	No.	Date	Description

Reference Files	Designed by: NS	Checked by: NS
	Drawn by: JEB	Reviewed by: NS
	Date: 12/04/23	Submitted by: NS
	Plot Scale: AS NOTED	Comm. No: XXXXXX.XX

INDIAN SHORES BEACH
 EMERGENCY REPAIR PROJECT
 PINELLAS COUNTY, FLORIDA
 PLAN VIEW

DRAWING NO.
PV-5
 SHEET 7 OF 21

C:\Users\Nicole.Sharp\Desktop\Emergency Repair Project\CAD\CONSTRUCTION\INDIAN SHORES EMERGENCY BEACH REPAIR-CONSTR.DWG - Dec 04, 2023 @ 2:32pm - John Brand



P:\Projects\Indian Shores Beach Emergency Repair Project\LOAD\CONSTRUCTION\INDIAN SHORES EMERGENCY BEACH REPAIR-CONSTR.DWG - Dec 14, 2023 @ 3:32pm - Alan Brand

NOTES:
 1. FILL LIMITS WILL BE FIELD ADJUSTED AS DIRECTED BY ENGINEER.

NICOLE S. SHARP
 LICENSE
 No. 74708
 STATE OF
 FLORIDA
 PROFESSIONAL ENGINEER

CERTIFICATION:
 I CERTIFY THAT THESE PLANS ARE IN COMPLIANCE WITH THE APPLICABLE SECTIONS OF 62B-41, F.A.C.

NICOLE S. SHARP P.E. NO. 74708
 DATE **12/5/23**

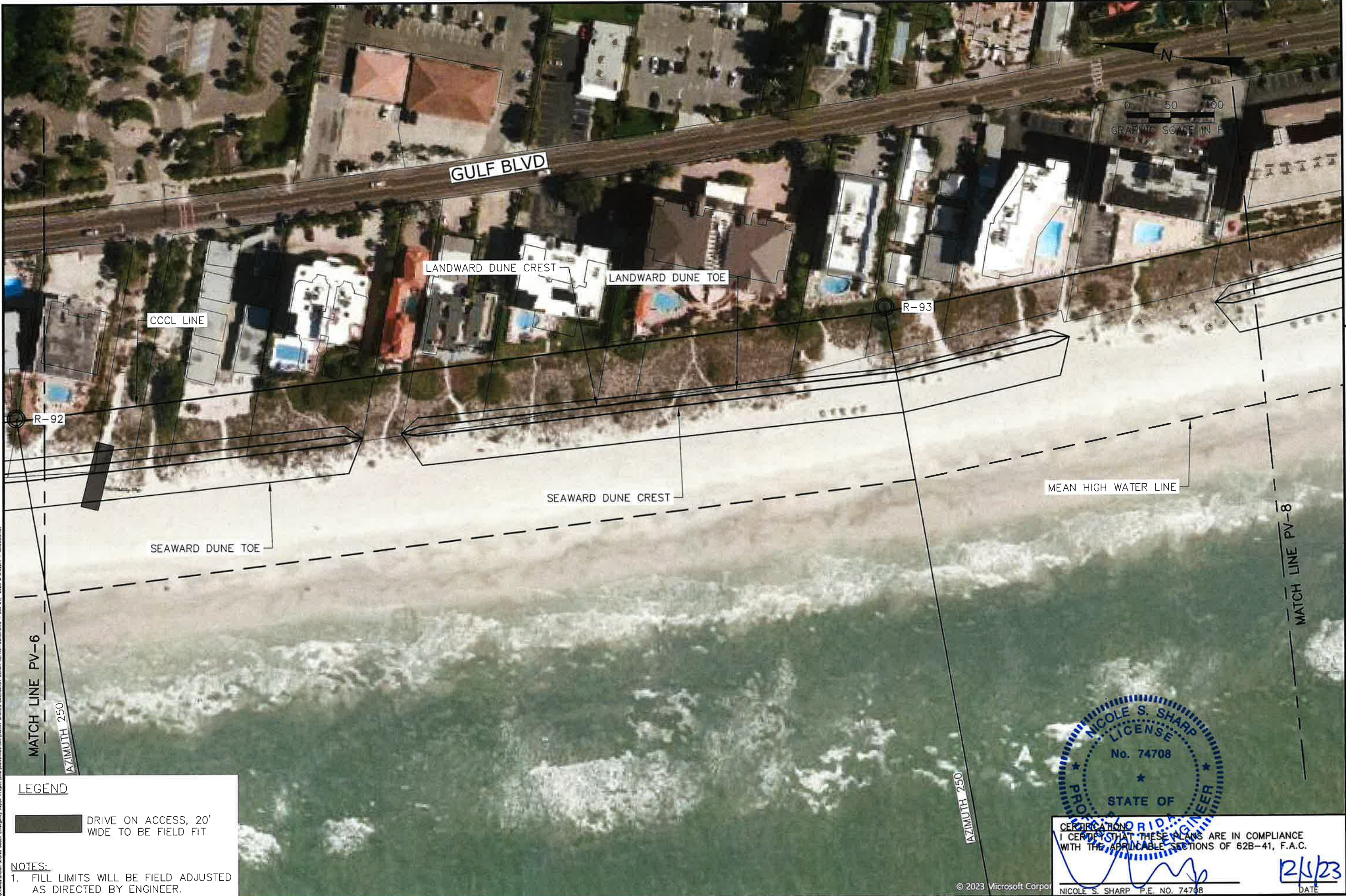
© 2023 Microsoft Corp

Aptim Environmental & Infrastructure, LLC
 PH: (561) 391-9102
 FAX: (561) 391-9116
 C.O.A. FL: #9517
 C.O.A. LA: #2551
 6401 CONGRESS AVENUE, SUITE 140
 BOCA RATON, FLORIDA 33487
 www.aptrm.com

REVISIONS	
No.	Description

INDIAN SHORES BEACH
 EMERGENCY REPAIR PROJECT
 PINELLAS COUNTY, FLORIDA
 PLAN VIEW

DRAWING NO.
PV-6
 SHEET 8 OF 21



LEGEND

DRIVE ON ACCESS, 20' WIDE TO BE FIELD FIT

NOTES:
 1. FILL LIMITS WILL BE FIELD ADJUSTED AS DIRECTED BY ENGINEER.

NICOLE S. SHARP
 LICENSE
 No. 74708
 STATE OF
 FLORIDA
 PROFESSIONAL ENGINEER

I CERTIFY THAT THESE PLANS ARE IN COMPLIANCE WITH THE APPLICABLE SECTIONS OF 62B-41, F.A.C.

 NICOLE S. SHARP P.E. NO. 74708

12/5/23
 DATE

Aptim Environmental & Infrastructure, LLC
 PH. (561) 391-8102
 FAX (561) 391-8116
 C.O.A. FL. #9317
 C.O.A. LA. #2531

6401 CONGRESS AVENUE, SUITE 140
 BOCA RATON, FLORIDA 33487
 www.aptim.com

No.	Date	Description

Reference Files:	Designed by: NS	Checked by: NS	Reviewed by: NS
	Drawn by: JEB		
	Date: 12/04/23		Submitted by: NS
			Comm. No.: XXXXXXX
			AS NOTED

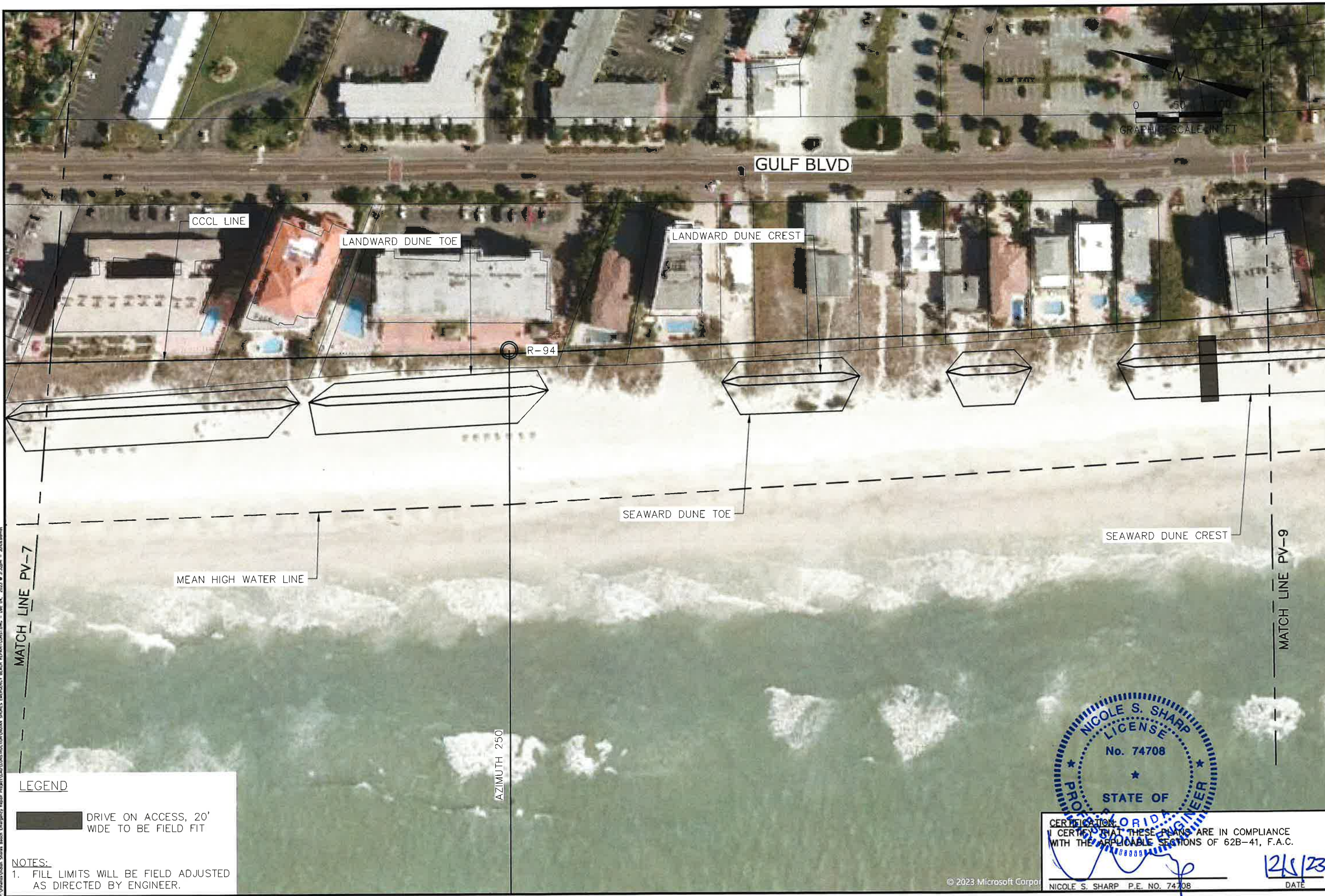
INDIAN SHORES BEACH
 EMERGENCY REPAIR PROJECT
 PINELLAS COUNTY, FLORIDA

PLAN VIEW

DRAWING NO.
PV-7

SHEET 9 OF 21

© 2023 Microsoft Corporation. All rights reserved. Microsoft, the Microsoft Dynamics logo, and the Microsoft Dynamics ribbon are either registered trademarks or trademarks of Microsoft Corporation in the United States and/or other countries.



P:\Projects\Indian Shores Beach Emergency Repair\GIS\CONSTRUCTION\WOMAS\WORKS\INDIRECT\BEACH\BEACH-COASTLINE - Dec 04, 2023 @ 3:32pm - JMS.Bent

LEGEND

DRIVE ON ACCESS, 20' WIDE TO BE FIELD FIT

NOTES:

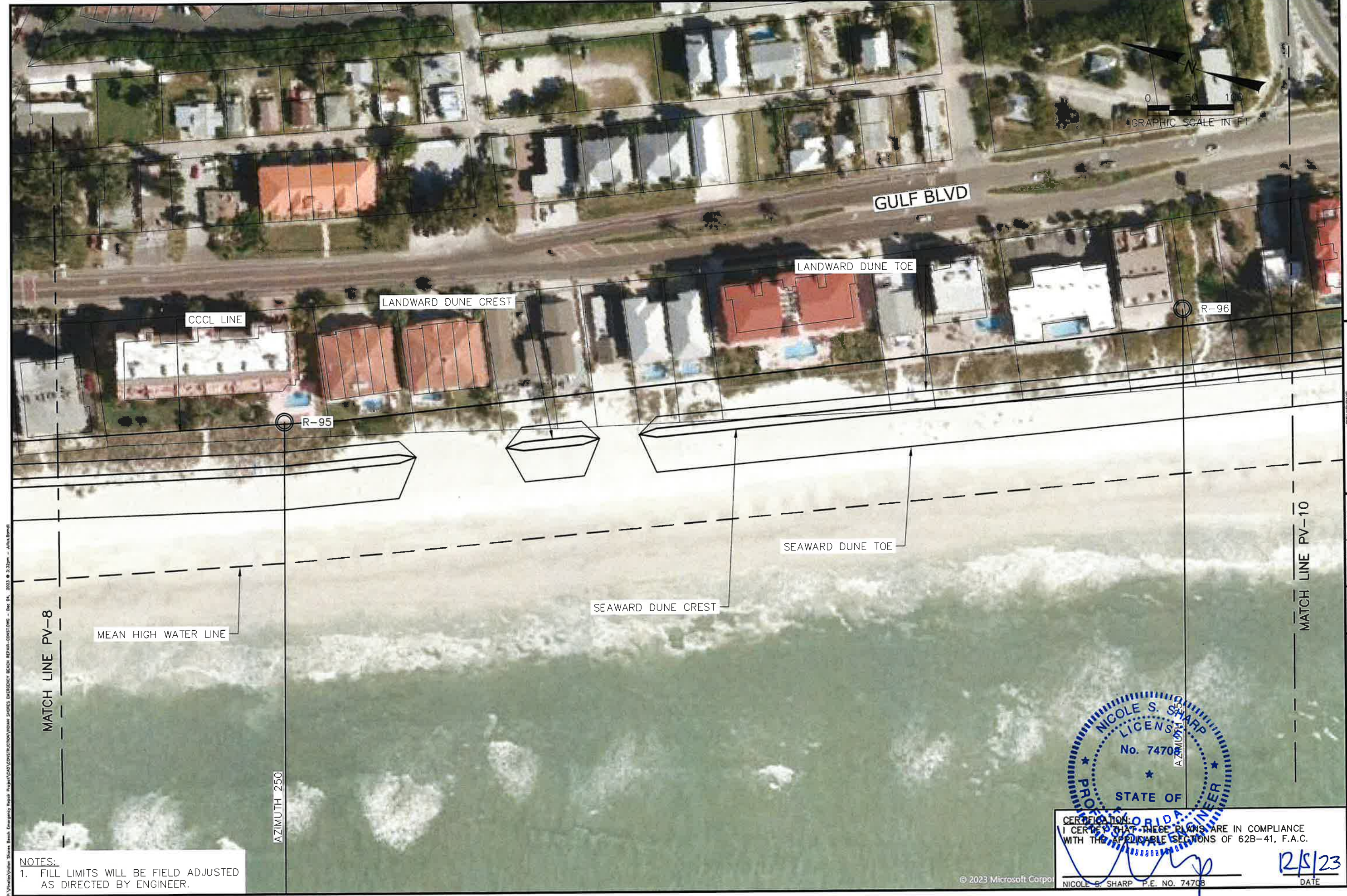
1. FILL LIMITS WILL BE FIELD ADJUSTED AS DIRECTED BY ENGINEER.

NICOLE S. SHARP
 LICENSE
 No. 74708
 STATE OF
 FLORIDA
 PROFESSIONAL ENGINEER

CERTIFICATION:
 I CERTIFY THAT THESE PLANS ARE IN COMPLIANCE WITH THE APPLICABLE SECTIONS OF 62B-41, F.A.C.

NICOLE S. SHARP P.E. NO. 74708
 DATE 12/15/23

Aptim Environmental & Infrastructure, LLC 6401 CONGRESS AVENUE, SUITE 140 BOCA RATON, FLORIDA 33487 www.aptim.com																			
PH. (561) 391-8102 FAX (561) 391-9116 C.O.A. FL. #9317 C.O.A. LA. #2531																			
INDIAN SHORES BEACH EMERGENCY REPAIR PROJECT PINELLAS COUNTY, FLORIDA	PLAN VIEW																		
DRAWING NO.	PV-8																		
SHEET 10 OF 21																			
REVISIONS	<table border="1" style="width: 100%; border-collapse: collapse;"> <thead> <tr> <th>No.</th> <th>Date</th> <th>Description</th> </tr> </thead> <tbody> <tr><td> </td><td> </td><td> </td></tr> <tr><td> </td><td> </td><td> </td></tr> <tr><td> </td><td> </td><td> </td></tr> <tr><td> </td><td> </td><td> </td></tr> <tr><td> </td><td> </td><td> </td></tr> </tbody> </table>	No.	Date	Description															
No.	Date	Description																	
<table border="1" style="width: 100%; border-collapse: collapse;"> <tr> <td style="width: 25%;">Reference Files:</td> <td>Designed by: NS</td> <td>Checked by: NS</td> </tr> <tr> <td></td> <td>Drawn by: JEB</td> <td>Reviewed by: NS</td> </tr> <tr> <td></td> <td>Date: 12/04/23</td> <td>Submitted by: NS</td> </tr> <tr> <td></td> <td>Plot Scale: AS NOTED</td> <td>Comm. No.: XXXXX.XX</td> </tr> </table>	Reference Files:	Designed by: NS	Checked by: NS		Drawn by: JEB	Reviewed by: NS		Date: 12/04/23	Submitted by: NS		Plot Scale: AS NOTED	Comm. No.: XXXXX.XX							
Reference Files:	Designed by: NS	Checked by: NS																	
	Drawn by: JEB	Reviewed by: NS																	
	Date: 12/04/23	Submitted by: NS																	
	Plot Scale: AS NOTED	Comm. No.: XXXXX.XX																	



C:\Users\Nicole.Sharp\Desktop\Emergency Repair Project\2023\CONSTRUCTION\NORMAL SURVEYS\EMERGENCY BEACH REPAIR-CONSTR.DWG - Dec 24, 2023 @ 3:33pm - AutoCAD

NOTES:
 1. FILL LIMITS WILL BE FIELD ADJUSTED AS DIRECTED BY ENGINEER.

PROFESSIONAL ENGINEER
 STATE OF FLORIDA
 NICOLE S. SHARP
 LICENSE No. 74708
 A ZWILCH

CERTIFICATION:
 I CERTIFY THAT THESE PLANS ARE IN COMPLIANCE WITH THE APPLICABLE SECTIONS OF 62B-41, F.A.C.

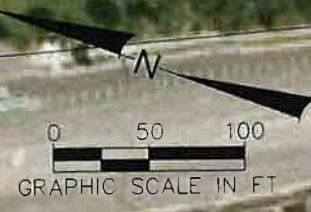
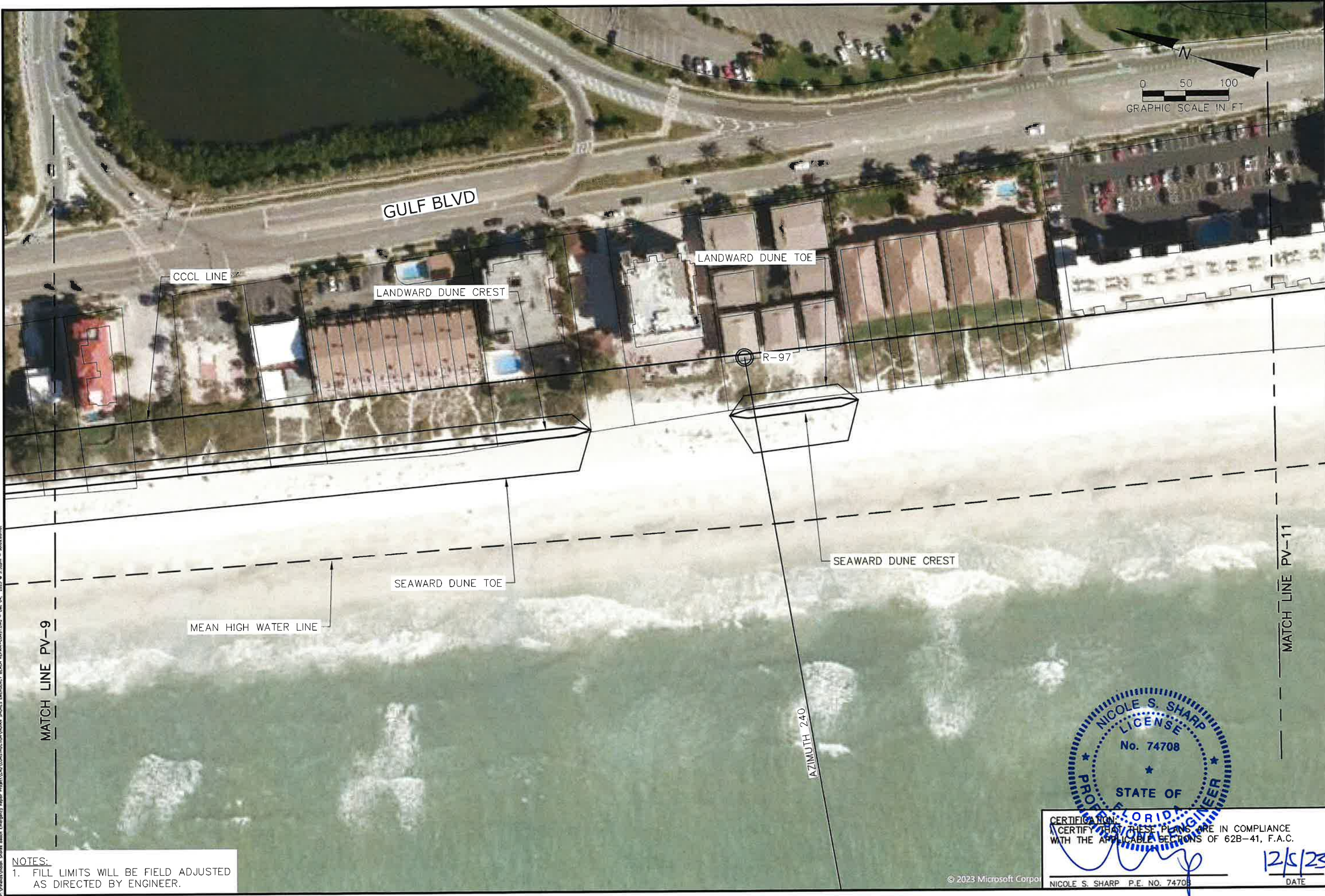
NICOLE S. SHARP P.E. NO. 74708
 DATE 12/5/23

Aptim Environmental & Infrastructure, LLC
 PH (561) 391-8102
 FAX (561) 391-9116
 C.O.A. FL #9317
 C.O.A. LA #2531
 6401 CONGRESS AVENUE, SUITE 140
 BOCA RATON, FLORIDA 33487
 www.aptrim.com

Reference Files	Designed by	Checked by	REVISIONS
	NS	NS	
	Drawn by: JEB	Reviewed by: NS	
	Date: 12/04/23	Submitted by: NS	
	Proj. Status: AS NOTED	Drawn No.: XXXXXX	
		Scale: AS NOTED	
		No. 1	Date
			Description

INDIAN SHORES BEACH
 EMERGENCY REPAIR PROJECT
 PINELLAS COUNTY, FLORIDA
 PLAN VIEW

DRAWING NO.
PV-9
 SHEET 11 OF 21



Aptim Environmental & Infrastructure, LLC
 PH. (561) 391-8102
 FAX (561) 391-9116
 C.O.A. FL #9317
 C.O.A. LA #2531
 6401 CONGRESS AVENUE, SUITE 140
 BOCA RATON, FLORIDA 33487
 www.aptrim.com

REVISIONS	No.	Date	Description

Reference Files	Designed by:	Checked by:
	NS	NS
	Drawn by:	Reviewed by:
	JEB	NS
	Date:	Submitted by:
	12/04/23	NS
	Plot Scale:	Comm. No.:
	AS NOTED	XXXX-XXXX

INDIAN SHORES BEACH
 EMERGENCY REPAIR PROJECT
 PINELLAS COUNTY, FLORIDA
 PLAN VIEW



CERTIFICATION:
 CERTIFY THAT THESE PLANS ARE IN COMPLIANCE
 WITH THE APPLICABLE SECTIONS OF 62B-41, F.A.C.

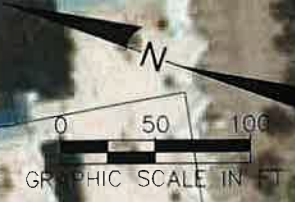
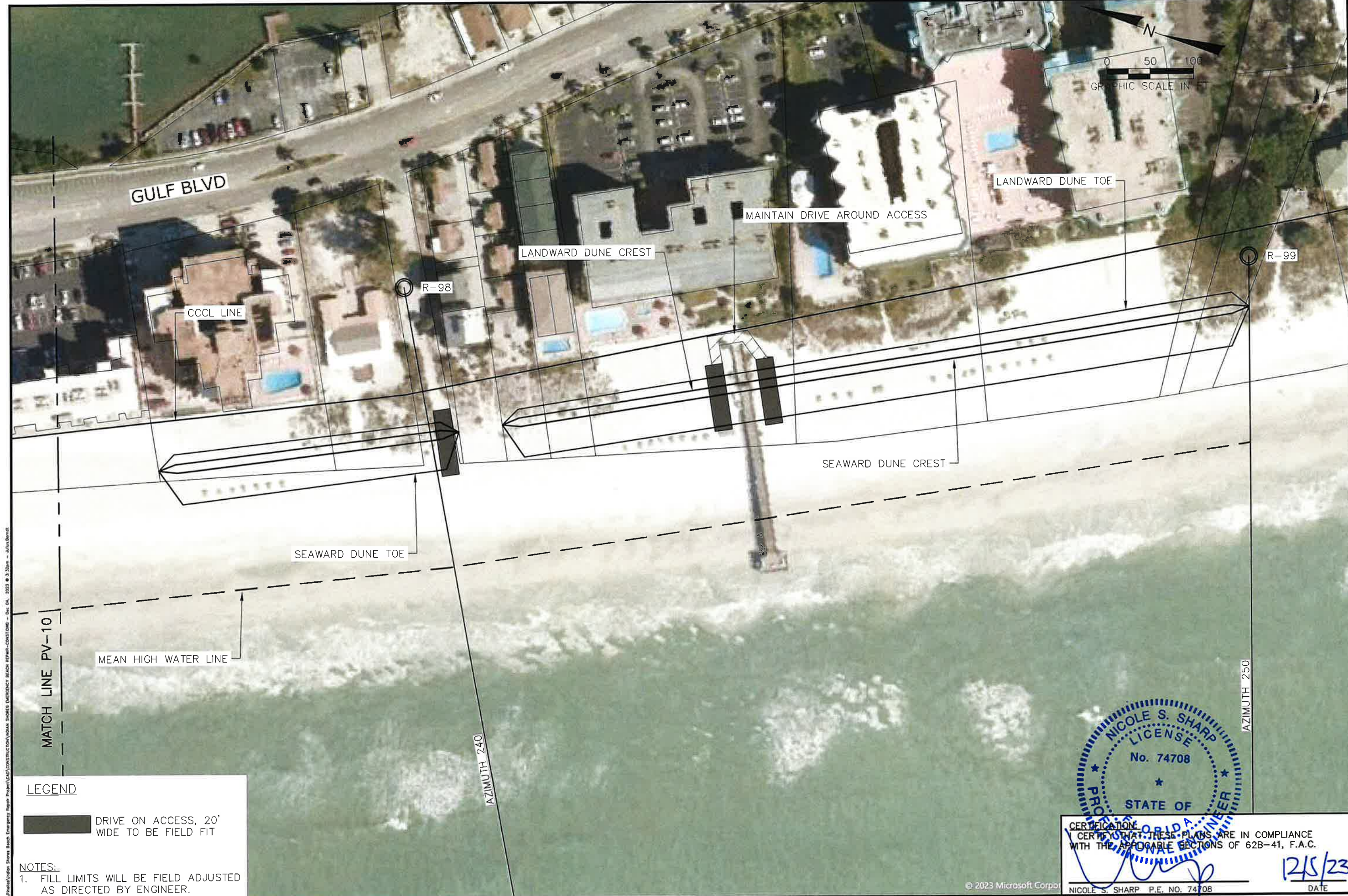
Nicole S. Sharp
 NICOLE S. SHARP P.E. NO. 74708

12/5/23
 DATE

DRAWING NO.
 PV-10
 SHEET 12 OF 21

NOTES:
 1. FILL LIMITS WILL BE FIELD ADJUSTED
 AS DIRECTED BY ENGINEER.

© 2023 Microsoft Corp



MATCH LINE PV-10

LEGEND

DRIVE ON ACCESS, 20' WIDE TO BE FIELD FIT

NOTES:

1. FILL LIMITS WILL BE FIELD ADJUSTED AS DIRECTED BY ENGINEER.

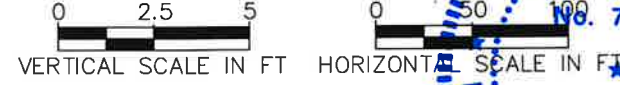
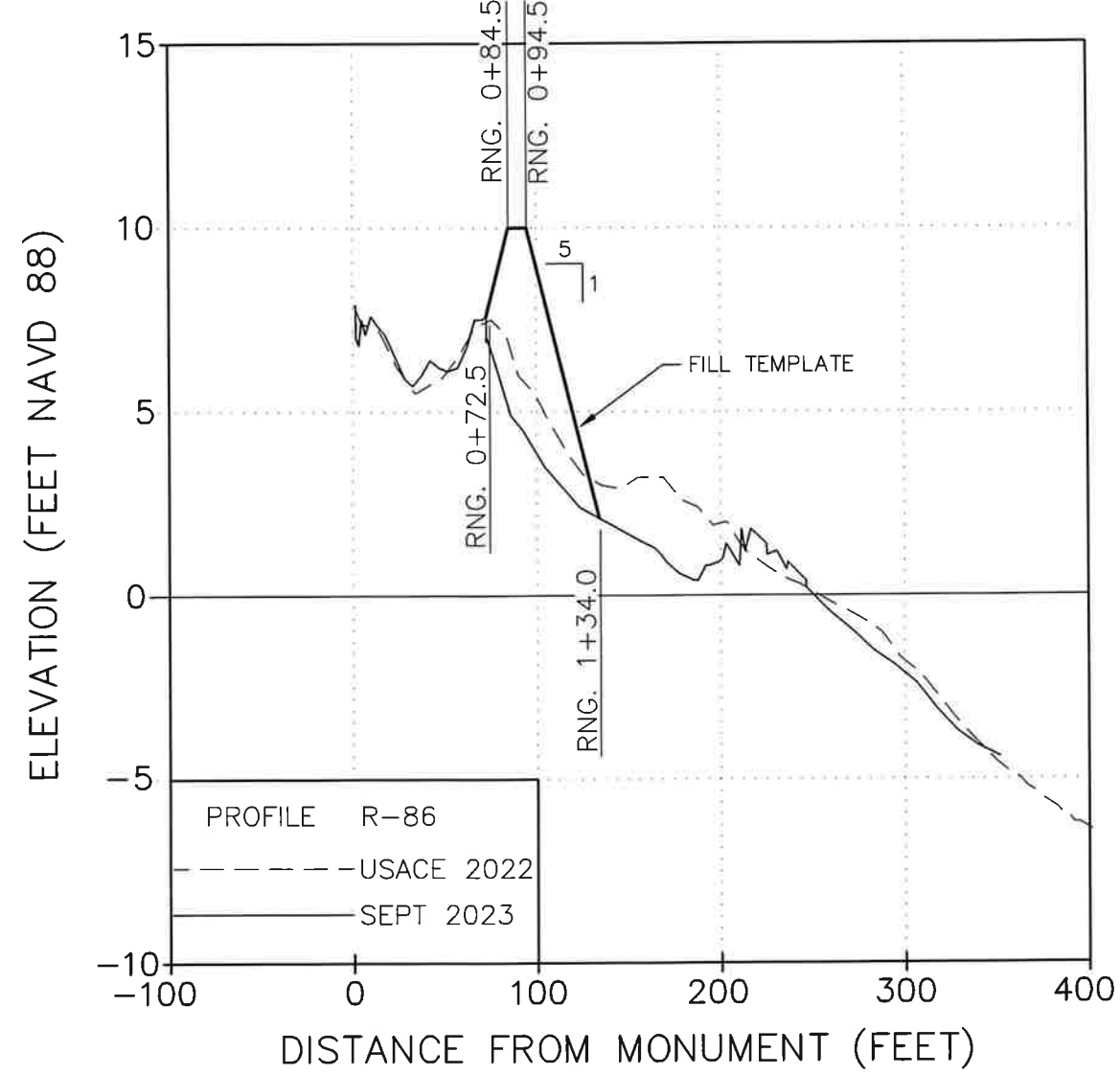
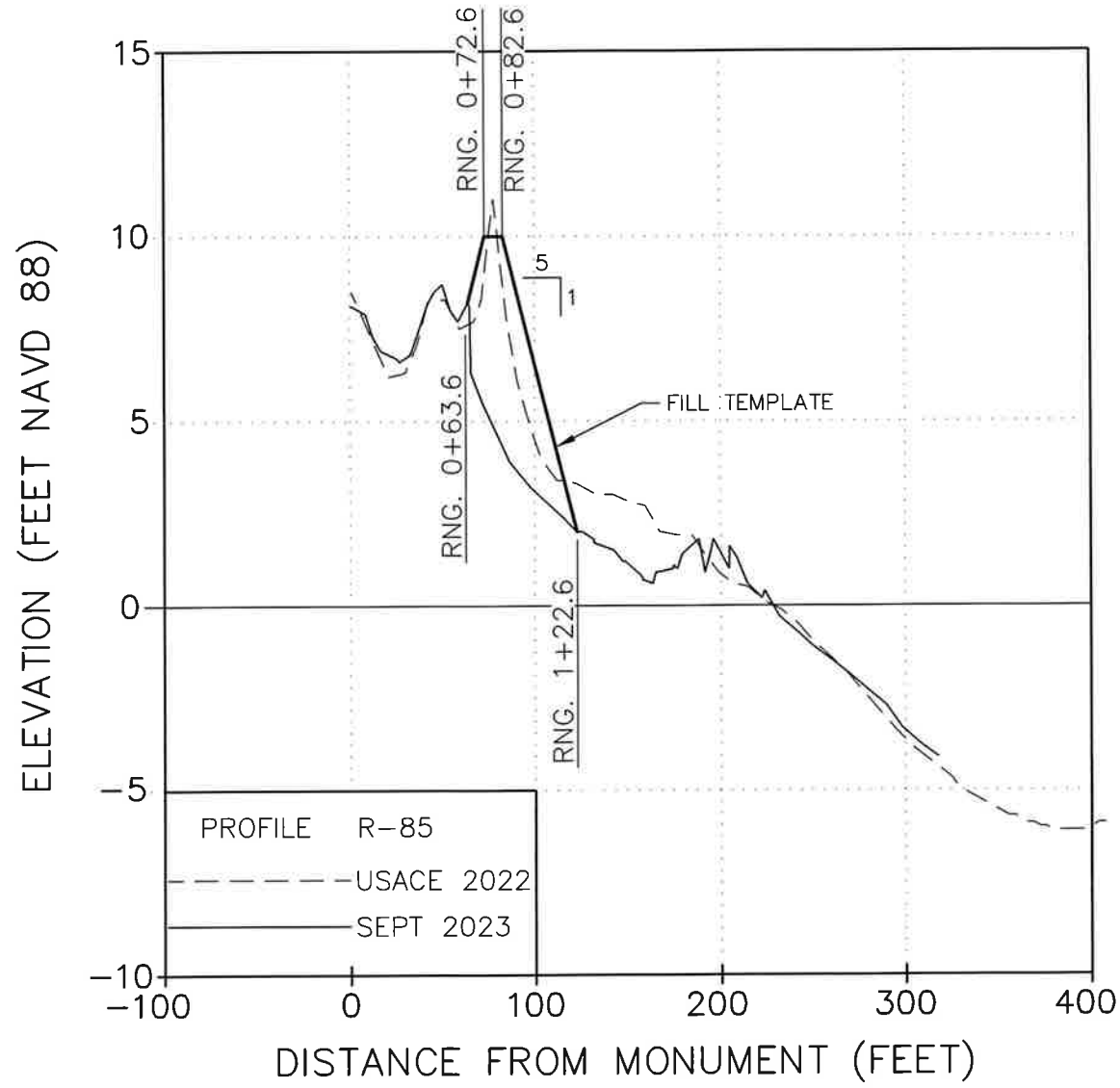
NICOLE S. SHARP P.E. NO. 74708
 DATE 12/5/23

CERTIFICATION:
 I CERTIFY THAT THESE PLANS ARE IN COMPLIANCE WITH THE APPLICABLE SECTIONS OF 62B-41, F.A.C.

Aptim Environmental & Infrastructure, LLC 6401 CONGRESS AVENUE, SUITE 140 BOCA RATON, FLORIDA 33487 www.apitm.com																			
PH. (561) 391-8102 FAX (561) 391-9116 C.O.A. FL. #9347 C.O.A. LA. #2531																			
INDIAN SHORES BEACH EMERGENCY REPAIR PROJECT PINELLAS COUNTY, FLORIDA	PLAN VIEW																		
Reference Files: Designed by: NS Drawn by: JEB Date: 12/04/23 Plot Scale: AS NOTED	Checked by: NS Reviewed by: NS Submitted by: NS Comm. No.: XXXXXXXX																		
<table border="1" style="width: 100%; border-collapse: collapse;"> <thead> <tr> <th style="width: 5%;">No.</th> <th style="width: 85%;">Date</th> <th style="width: 10%;">Description</th> </tr> </thead> <tbody> <tr><td> </td><td> </td><td> </td></tr> <tr><td> </td><td> </td><td> </td></tr> <tr><td> </td><td> </td><td> </td></tr> <tr><td> </td><td> </td><td> </td></tr> <tr><td> </td><td> </td><td> </td></tr> </tbody> </table>		No.	Date	Description															
No.	Date	Description																	
DRAWING NO. PV-11	SHEET 13 OF 21																		

P:\Projects\Indian Shores Beach Emergency Repair Project\Lead\CONSTRUCTION\INDIAN SHORES EMERGENCY BEACH REPAIR-COAST.DWG - Dec 04, 2023 @ 3:32pm - Jaxus Bland

P:\Projects\Indian Shores Beach Emergency Repair Project\LEAD\CONSTRUCTION\INDIAN SHORES EMERGENCY BEACH REPAIR-CONSTR.DWG - Det 04 - 2023 @ 3:35pm - Alvin Brand



NICOLE S. SHARP
 LICENSE NO. 74708
 STATE OF FLORIDA
 PROFESSIONAL ENGINEER

CERTIFICATION:
 I CERTIFY THAT THESE PLANS ARE IN COMPLIANCE
 WITH THE APPLICABLE SECTIONS OF 62B-41, F.A.C.

 NICOLE S. SHARP P.E. NO. 74708
 DATE: 12/5/23

Reference Files	Designed by	Checked by	REVISIONS
	NS	NS	
	Drawn by: JEB	Reviewed by: NS	
	Date: 12/04/23	Submitted by: NS	
	Plot Scale: AS NOTED	Comm. No.: XXXXXXXX	
			No. Date Description

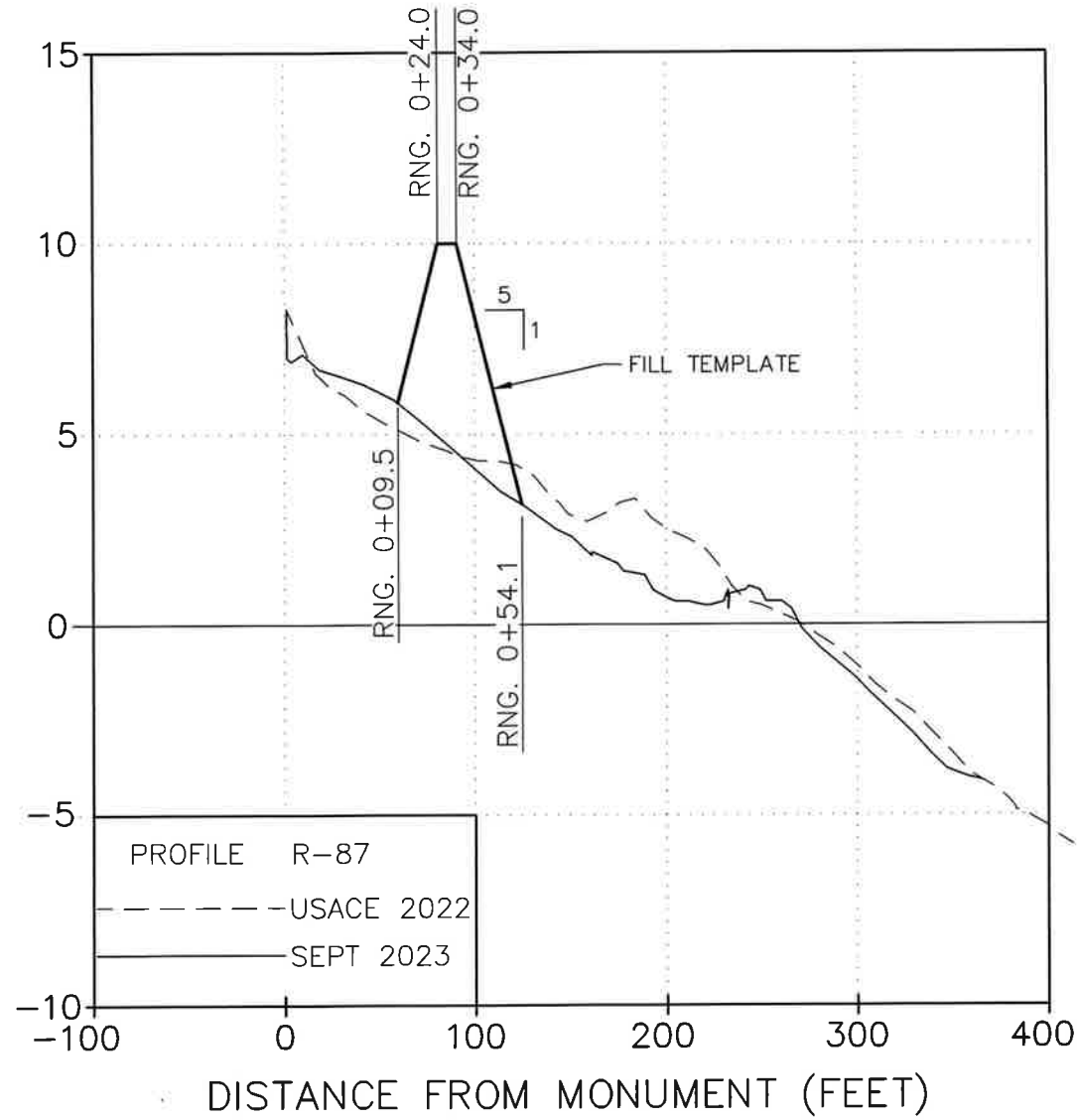
Aptim Environmental & Infrastructure, LLC
 6401 CONGRESS AVENUE, SUITE 140
 BOCA RATON, FLORIDA 33487
 www.aptim.com

PH. (561) 391-8102
 FAX (561) 391-8116
 C.O.A. FL. #8317
 C.O.A. LA. #2531

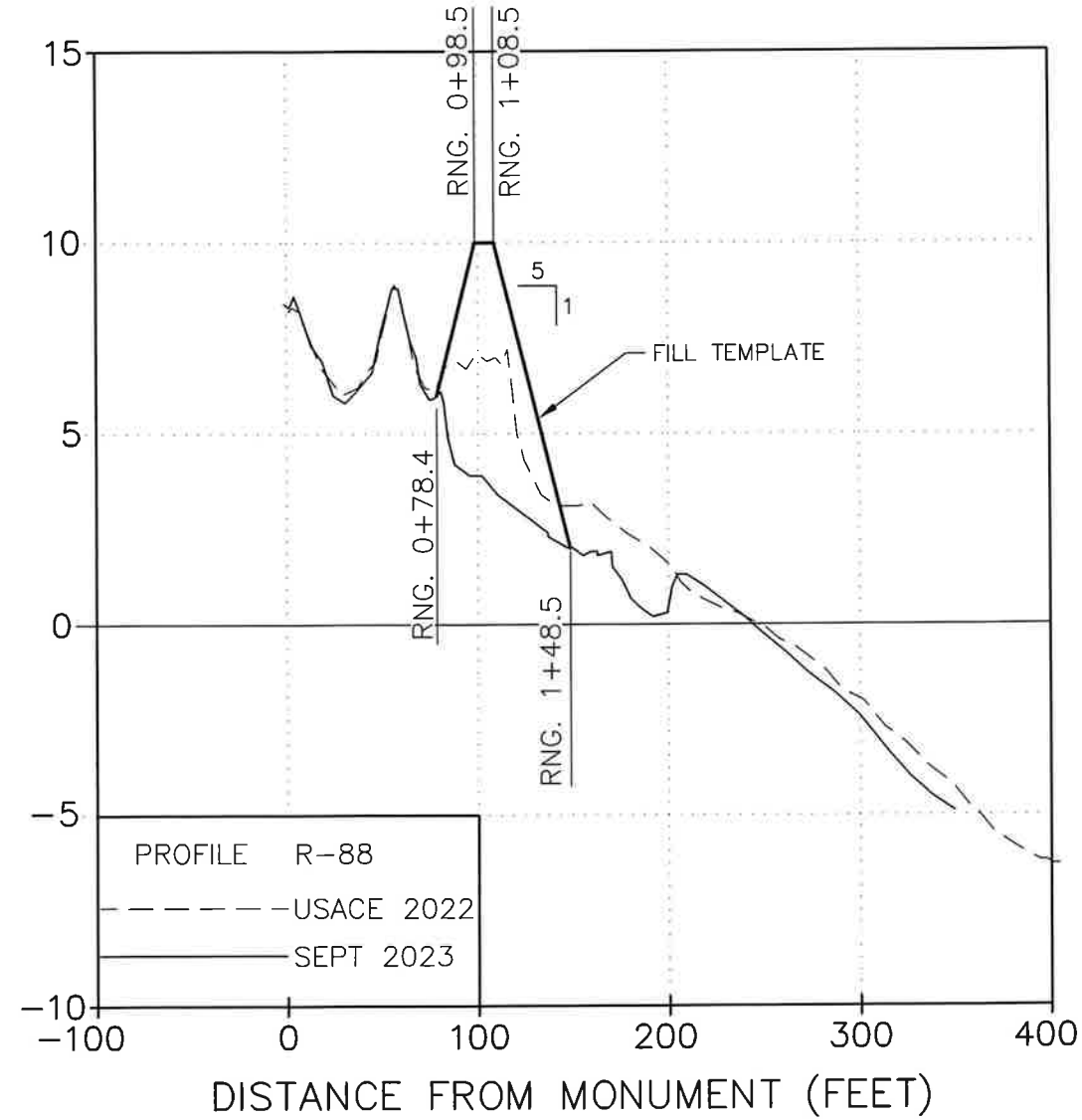
INDIAN SHORES BEACH
 EMERGENCY REPAIR PROJECT
 PINELLAS COUNTY, FLORIDA
 CROSS SECTION

DRAWING NO. XS-1
 SHEET 14 OF 21

ELEVATION (FEET NAVD 88)



ELEVATION (FEET NAVD 88)



CERTIFICATION
I CERTIFY THAT THESE PLANS ARE IN COMPLIANCE
WITH THE APPLICABLE SECTIONS OF 62B-41, F.A.C.

[Signature]
NICOLE S. SHARP P.E. NO. 74708

12/5/23
DATE

Aptim Environmental & Infrastructure, LLC
PH: (561) 391-8102
FAX (561) 391-8116
C.O.A. FL. #9317
C.O.A. LA. #2531

6401 CONGRESS AVENUE, SUITE 140
BOCA RATON, FLORIDA 33487
www.apitm.com

REVISIONS	No.	Date	Description

Designed by:	NS	Checked by:	NS
Drawn by:	JEB	Reviewed by:	NS
Date:	12/04/23	Submitted by:	NS
Plot Scale:	AS NOTED	Comm. No.:	XXXXXXXX

INDIAN SHORES BEACH
EMERGENCY REPAIR PROJECT
PINELLAS COUNTY, FLORIDA

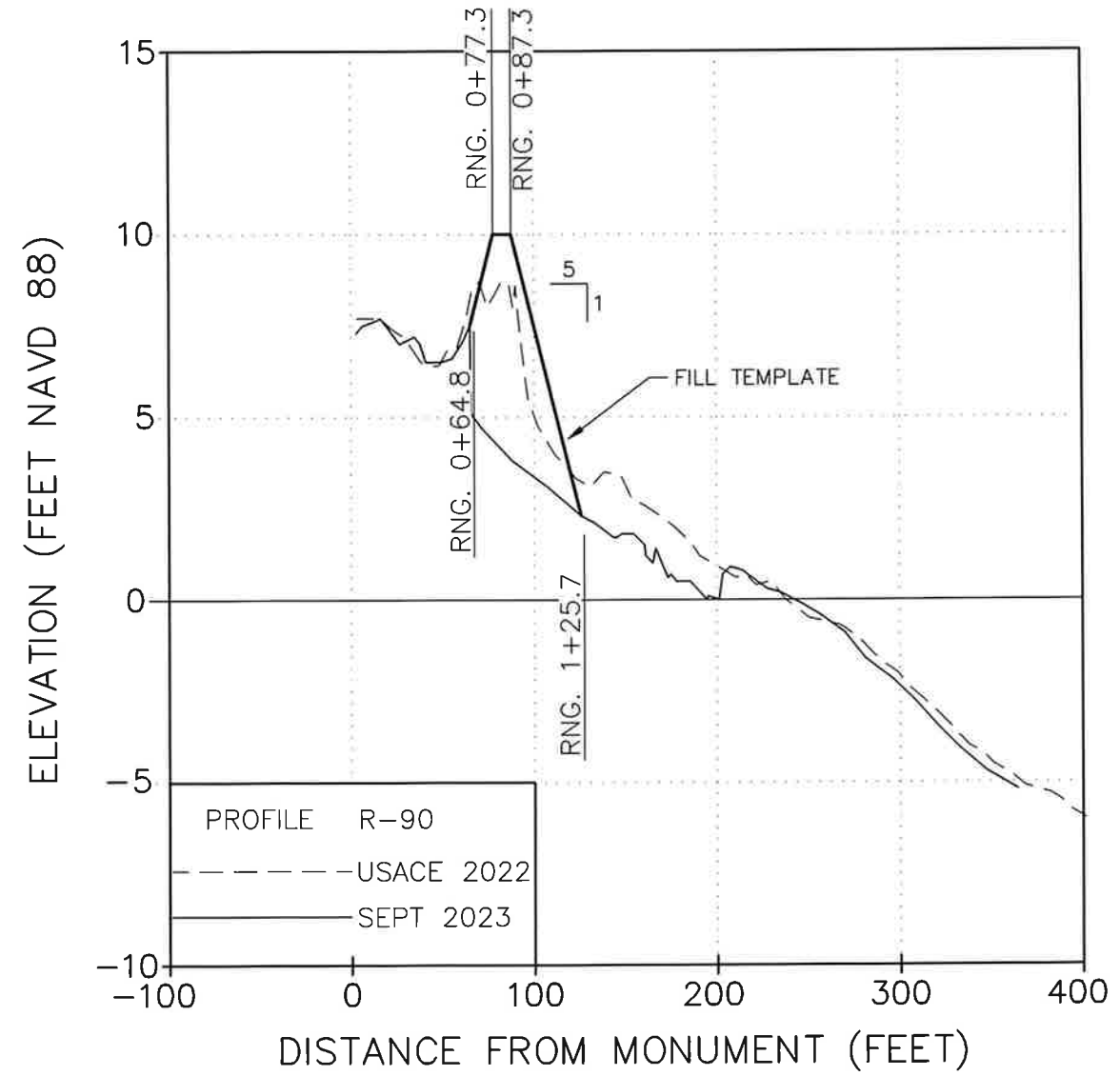
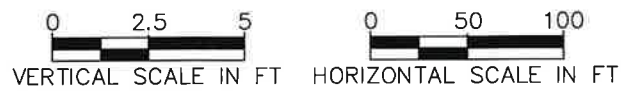
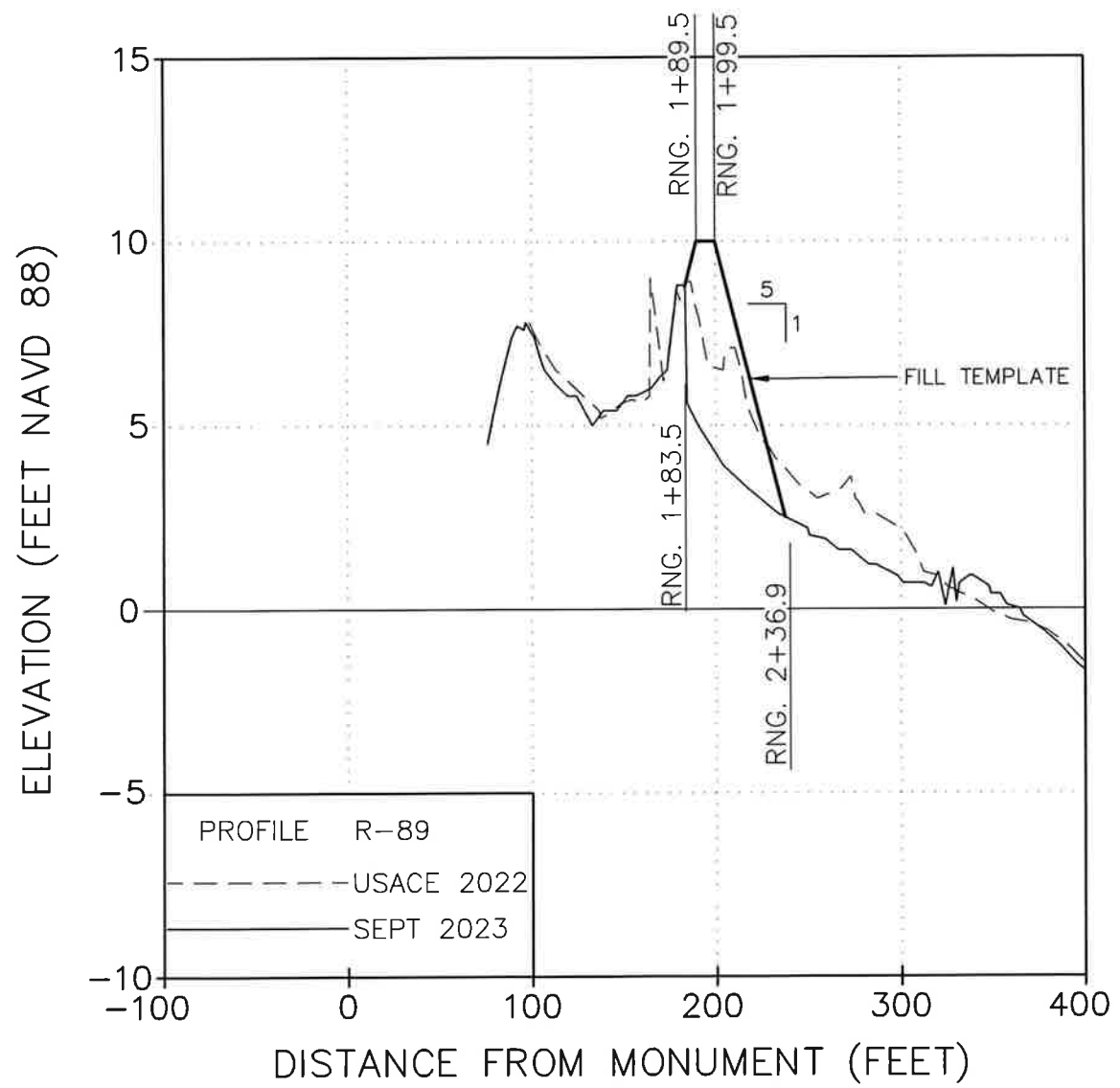
CROSS SECTION

DRAWING NO. XS-2

SHEET 15 OF 21

P:\Projects\Indian Shores Beach Emergency Repair Project\CONSTRUCTION\INDIAN SHORES EMERGENCY REPAIR-CROSS.DWG - Det SH - 2023 @ 3:35pm - Julia Brandt

P:\Projects\Indian Shores Beach Emergency Repair Project\CAD\CONSTRUCTION\INDIAN SHORES EMERGENCY BEACH REPAIR-CROSS1.dwg - Dec 04, 2023 @ 3:35pm - AutoCAD



NICOLE S. SHARP
LICENSE
No. 74708
REGISTERED PROFESSIONAL ENGINEER
STATE OF FLORIDA

CERTIFICATION:
I CERTIFY THAT THESE PLANS ARE IN COMPLIANCE WITH THE APPLICABLE SECTIONS OF 62B-41, F.A.C.

Nicole S. Sharp
NICOLE S. SHARP P.E. NO. 74708

12/5/23
DATE

Aptim Environmental & Infrastructure, LLC
PH. (561) 391-8102
FAX (561) 391-9116
C.O.A. FL. #9317
C.O.A. LA. #2531

6401 CONGRESS AVENUE, SUITE 140
BOCA RATON, FLORIDA 33487
www.aptim.com

REVISIONS	No.	Date	Description

Checked by: NS
Reviewed by: NS
Submitted by: NS
Comm. No.: XXXXXXXX

Designed by: NS
Drawn by: JEB
Date: 12/04/23
Plot Scale: AS NOTED

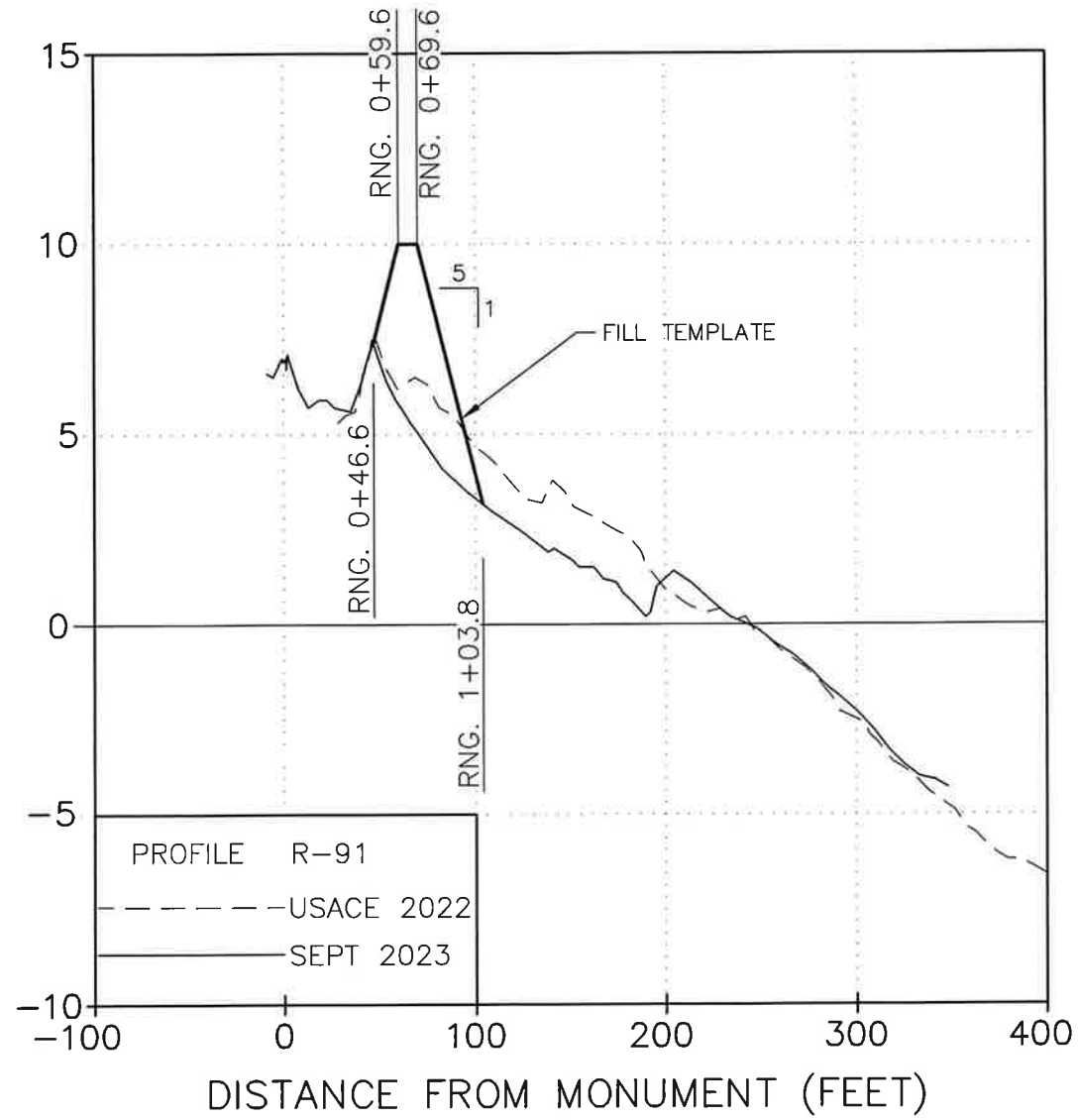
INDIAN SHORES BEACH EMERGENCY REPAIR PROJECT
PINELLAS COUNTY, FLORIDA

CROSS SECTION

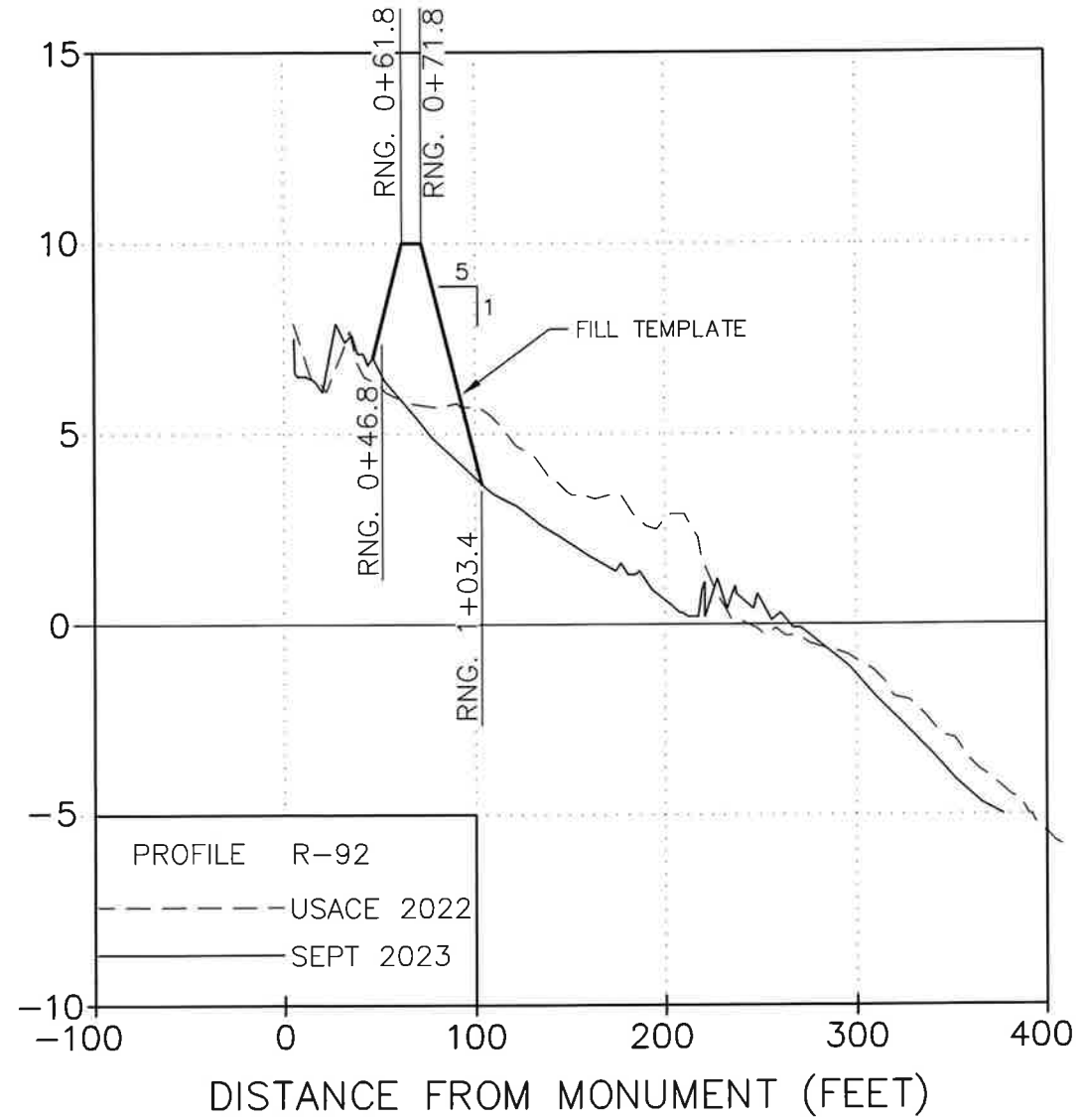
DRAWING NO. **XS-3**

SHEET 16 OF 21

ELEVATION (FEET NAVD 88)



ELEVATION (FEET NAVD 88)



NICOLE S. SHARP
LICENSE
No. 74708
STATE OF
FLORIDA
PROFESSIONAL ENGINEER

CERTIFICATION:
I CERTIFY THAT THESE PLANS ARE IN COMPLIANCE
WITH THE APPLICABLE SECTIONS OF 62B-41, F.A.C.

NICOLE S. SHARP P.E. NO. 74708

12/1/23
DATE

Aptim Environmental & Infrastructure, LLC
6401 CONGRESS AVENUE, SUITE 140
BOCA RATON, FLORIDA 33487
www.aptim.com

PH. (561) 391-8102
FAX (561) 391-9116
C.O.A. FL. #9317
C.O.A. LA. #2531

Reference File	Designed by	Checked by	Drawn by	Reviewed by	Submitted by	No.	Date	Description
	NS	NS	JEB	NS	NS			
					12/04/23			
					AS NOTED			
					XXXXXXX			

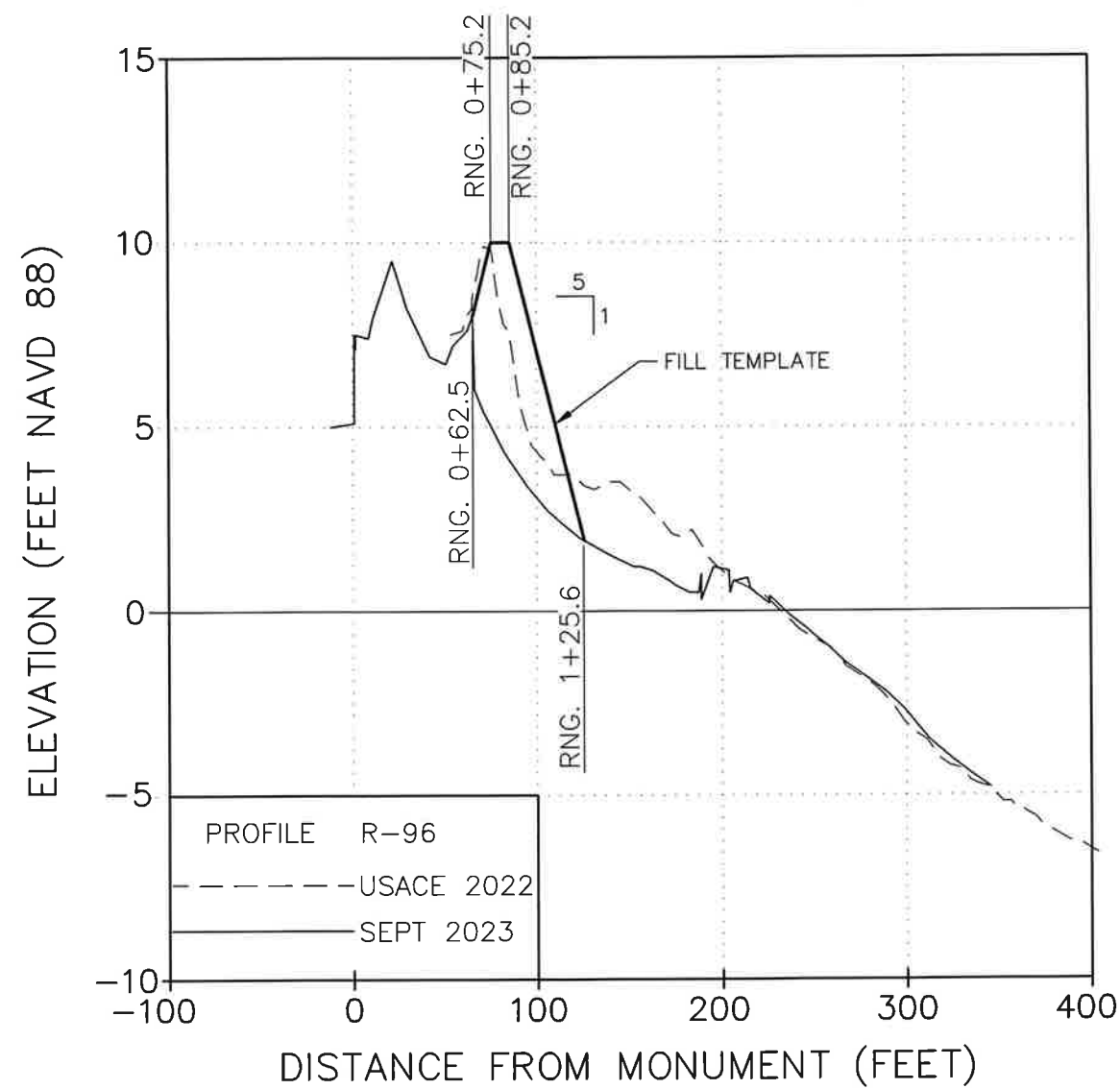
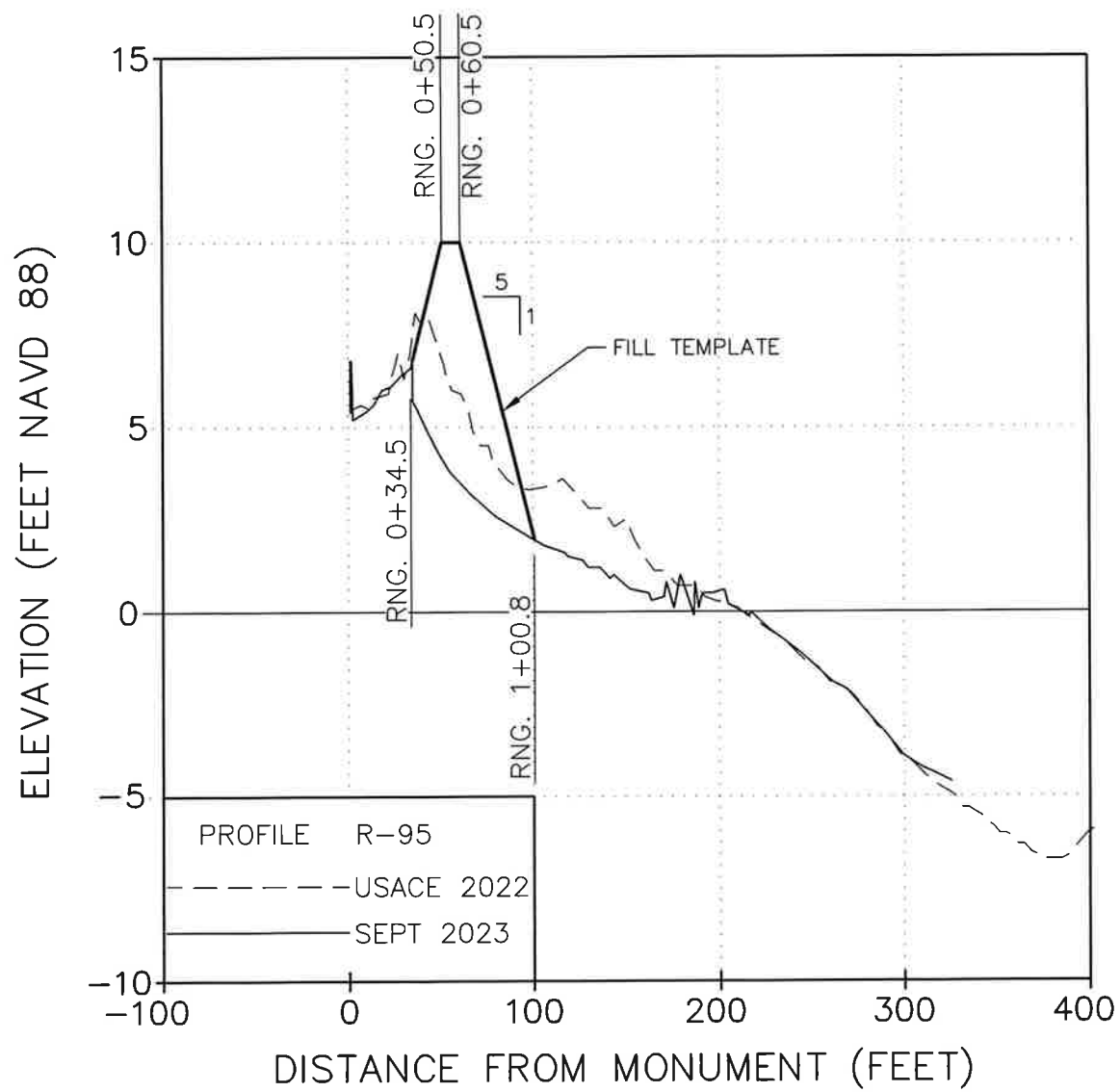
INDIAN SHORES BEACH
EMERGENCY REPAIR PROJECT
PINELLAS COUNTY, FLORIDA

CROSS SECTION

DRAWING NO.
XS-4

SHEET 17 OF 21

P:\Projects\Indian Shores Beach Emergency Repair\Project\CONSTRUCTION\INDIAN SHORES EMERGENCY BEACH REPAIR-CONST.DWG - DWG, 2023 @ 3:35pm - Adam Bivell



NICOLE S. SHARP
 LICENSE
 No. 74708
 STATE OF
 FLORIDA
 PROFESSIONAL ENGINEER

CERTIFICATION:
 I CERTIFY THAT THESE PLANS ARE IN COMPLIANCE
 WITH THE APPLICABLE SECTIONS OF 62B-41, F.A.C.

 NICOLE S. SHARP P.E. NO. 74708

DATE 12/5/23

Reference File	Designed by	Checked by	Drawn by	Reviewed by	Submitted by	No.	Date	Description
	NS	NS	JEB	NS	NS	XXXXXXX		

Aptim Environmental & Infrastructure, LLC
 6401 CONGRESS AVENUE, SUITE 140
 BOCA RATON, FLORIDA 33487
 www.aptim.com

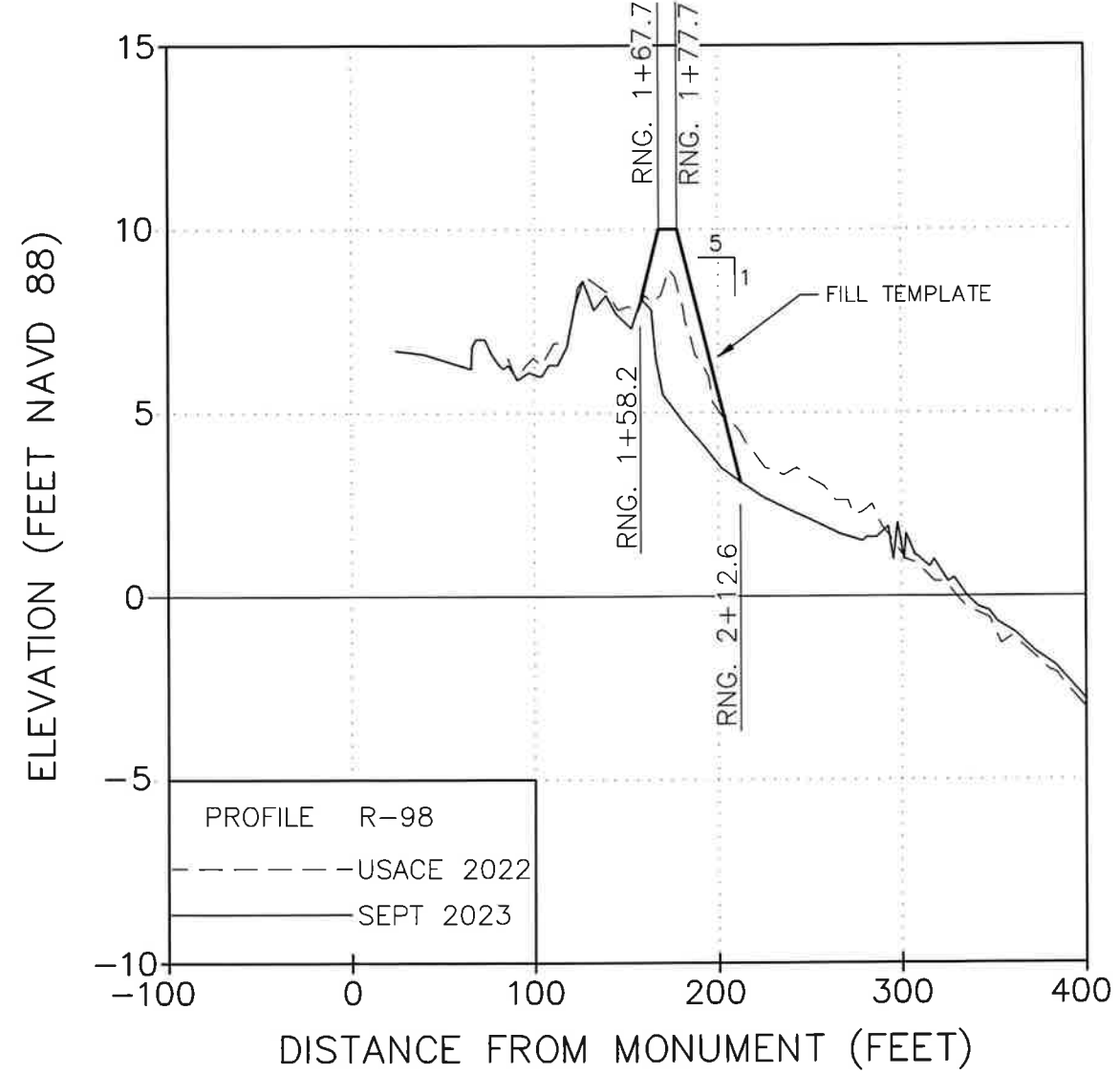
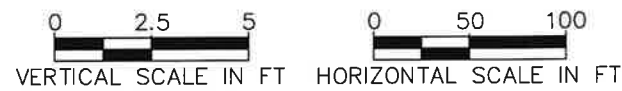
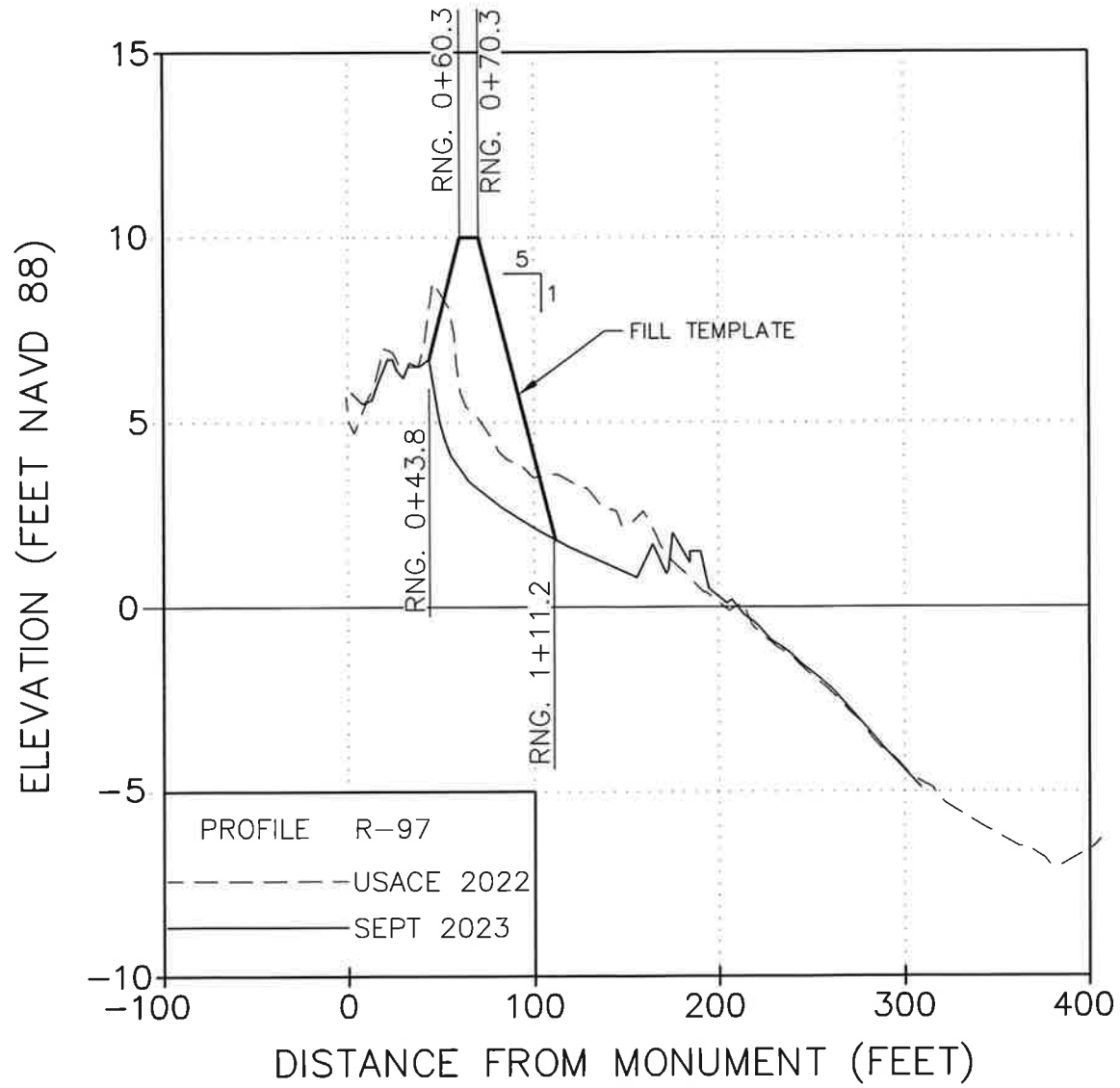
PH. (561) 391-8102
 FAX (561) 391-8116
 C.O.A. FL. #9317
 C.O.A. LA. #2531

INDIAN SHORES BEACH
 EMERGENCY REPAIR PROJECT
 PINELLAS COUNTY, FLORIDA

CROSS SECTION

DRAWING NO.
XS-6

SHEET 19 OF 21



NICOLE S. SHARP P.E. NO. 74708

CERTIFICATION:
 I CERTIFY THAT THESE PLANS ARE IN COMPLIANCE
 WITH THE APPLICABLE SECTIONS OF 62B-41, F.A.C.
 DATE: 12/5/23

No.	Date	Description

Reference File:	Designed by:	Checked by:
	NS	NS
	Drawn by:	Reviewed by:
	JEB	NS
	Date:	Submitted by:
	12/04/23	NS
	Plot Scale:	Comm. No.:
	AS NOTED	XXXXXXXX

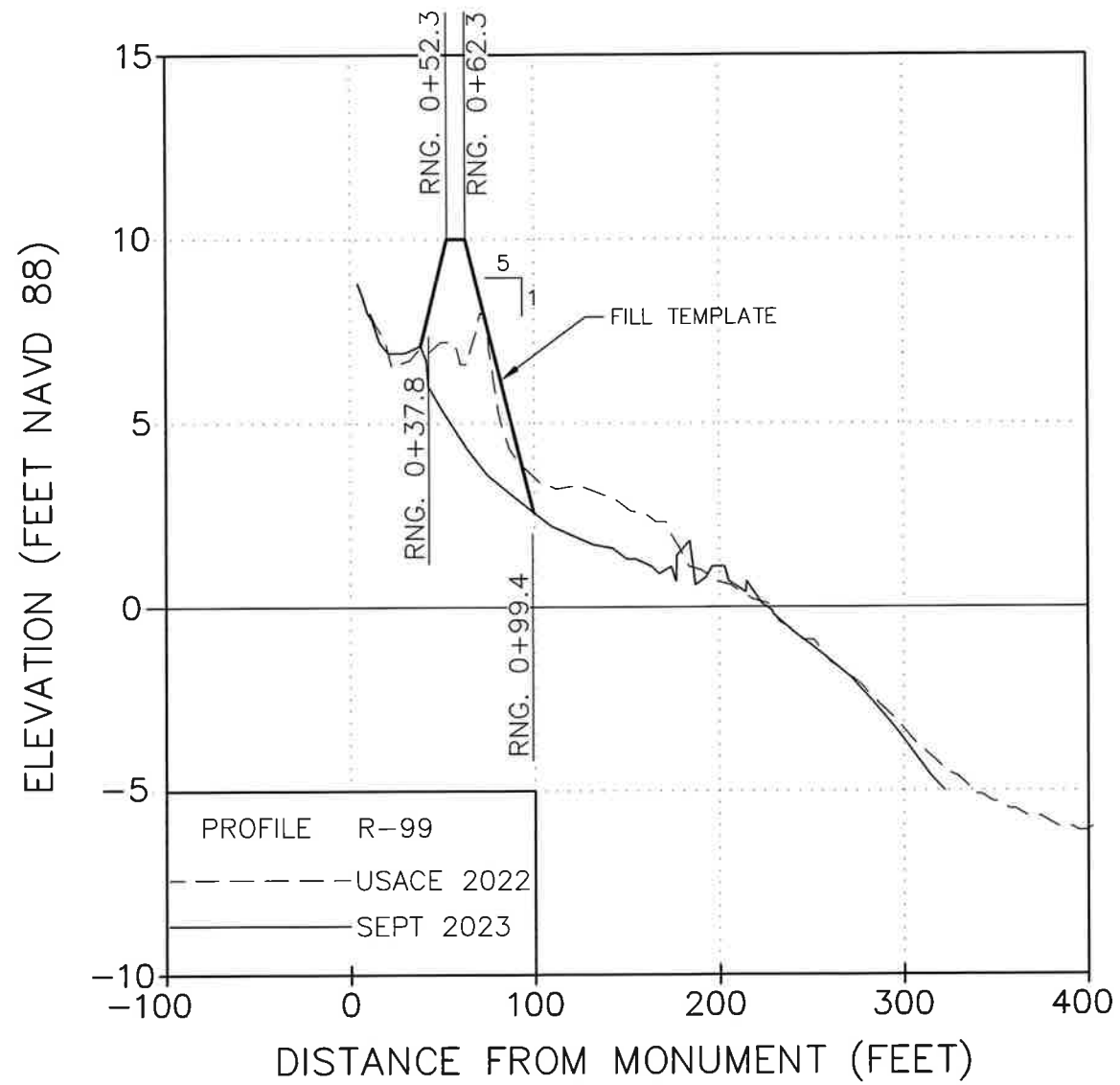
INDIAN SHORES BEACH
 EMERGENCY REPAIR PROJECT
 PINELLAS COUNTY, FLORIDA
 CROSS SECTION

DRAWING NO.
XS-7
 SHEET 20 OF 21

Aptim Environmental & Infrastructure, LLC
 6401 CONGRESS AVENUE, SUITE 140
 BOCA RATON, FLORIDA 33487
 www.aptim.com
 PH. (561) 391-8102
 FAX (561) 391-8116
 C.O.A. FL. #8317
 C.O.A. LA. #2531

P:\V\Indian Shores Beach Emergency Repair Project\CAD\CONSTRUCTION\INDIAN SHORES BEACH EMERGENCY REPAIR-CONSTR.DWG - Dec 04, 2023 @ 3:33pm - Juhua.Bianchi

P:\Projects\Indian Shores Beach Emergency Repair Project\CAD\CONSTRUCTION\INDIAN SHORES EMERGENCY BEACH REPAIR-CONST.DWG - Dec 04, 2023 @ 3:33pm - Julia Bennett



NICOLE S. SHARP
 LICENSE
 No. 74708
 STATE OF
 FLORIDA
 PROFESSIONAL ENGINEER

CERTIFICATION:
 I CERTIFY THAT THESE PLANS ARE IN COMPLIANCE
 WITH THE APPLICABLE SECTIONS OF 62B-41, F.A.C.

 NICOLE S. SHARP P.E. NO. 74708

12/15/23
 DATE

REVISIONS	Checked by:	Reviewed by:	Submitted by:	Comm. No.:	No.	Date	Description
	NS	NS	NS	XXXXXXX			

Aptim Environmental & Infrastructure, LLC
 6401 CONGRESS AVENUE, SUITE 140
 BOCA RATON, FLORIDA 33487
 www.aptim.com

PH. (561) 391-8102
 FAX (561) 391-8116
 C.O.A. FL #9317
 C.O.A. LA #2531

INDIAN SHORES BEACH
 EMERGENCY REPAIR PROJECT
 PINELLAS COUNTY, FLORIDA
 CROSS SECTION

DRAWING NO.
XS-8
 SHEET 21 OF 21