

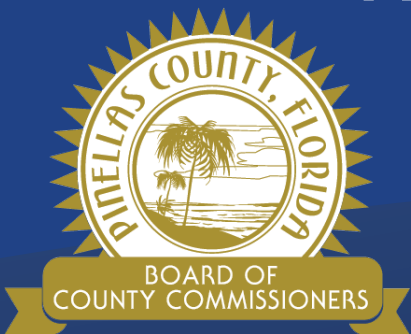
Transportation Infrastructure Investment Program



Pinellas County Public Works

Kelli Hammer Levy, Public Works Director

Tom Washburn, Transportation Division Director



Our Vision: To Be the Standard for Public Service in America



Transportation Assets and Priorities



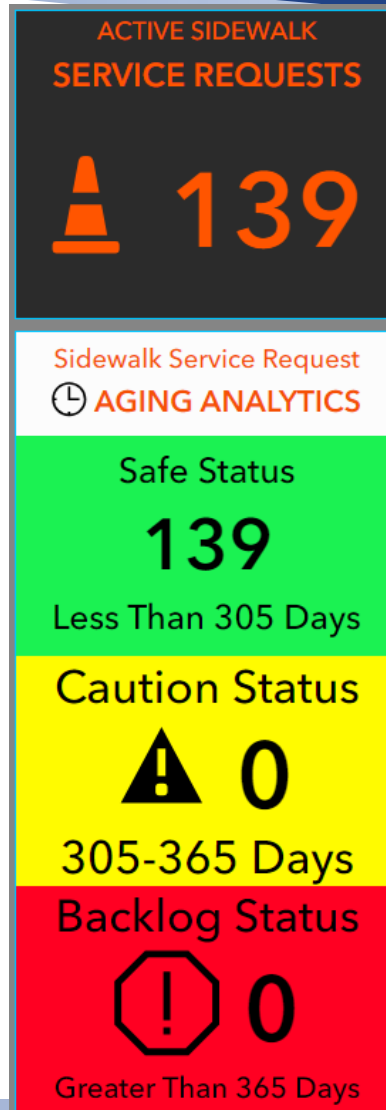
Priorities:

- **Dedicated millage Level of Service (LOS) improvements**
 - Local road resurfacing program (LOS D to LOS C)
 - Sidewalk management program (LOS D to LOS B)
 - Trail roadway crossing upgrades (LOS D to LOS B)
 - Maintenance: Trails, bridges, & underdrains (LOS D to LOS C) and box culverts & curbs (LOS F to LOS C)
- **Advanced Traffic Management System (ATMS)**
 - \$18M FY24 – FY26
 - Signal retiming (120 corridors), adaptive technology upgrades (150 intersections), & video analytic upgrades (390 intersections)
 - Goals - Improve traffic flow, allow for real-time adjustments, improve response to seasonal traffic patterns, & enhanced safety

Dedicated Millage LOS Improvements

Sidewalk Program

- **FY22-23 Backlog Reduction**
 - 587 service requests totaling ~14 miles of sidewalk
- **FY23 Developed and implemented backlog management program**
 - Performance measure: Backlog at 0% (no work > 365 days old)
- **FY24 Current Status**
 - Backlog 0%
 - Completed 134 service requests totaling ~ 4 miles



Trail Crossing Upgrades

- **199 trail roadway crossings**
- **FY23 – 38**
- **FY 24 – 80**
- *Upgrades include road and trail pavement markings, ADA transition pads, and crossing specific signage.*

Dedicated Millage LOS Improvements

Bridges and Box Culverts

- **200 in service**
- **Level of Service (LOS)**
 - Bridges – LOS D to C
 - Box Culverts – LOS F to C
- **Accomplishments**
 - Program development/contracting
 - Bridge maintenance investments
 - FY22 – \$707K
 - FY23 – \$883K
 - FY24 – \$1.9M
 - Box Culverts
 - 20 structural inspections in process



Dedicated Millage LOS Improvements



Curb and Underdrain

- **~2000 miles of curb and 261 miles of underdrain in service**
- **Level of Service (LOS)**
 - Curb – LOS F to C
 - Underdrain – LOS D to C
- **Accomplishments**
 - FY22 – 0.30 miles of curb and 1000 feet of underdrain
 - FY23 – 1.6 miles of curb and >2200 feet of underdrain
 - FY24 – >2 miles of curb and >5100 feet of underdrain

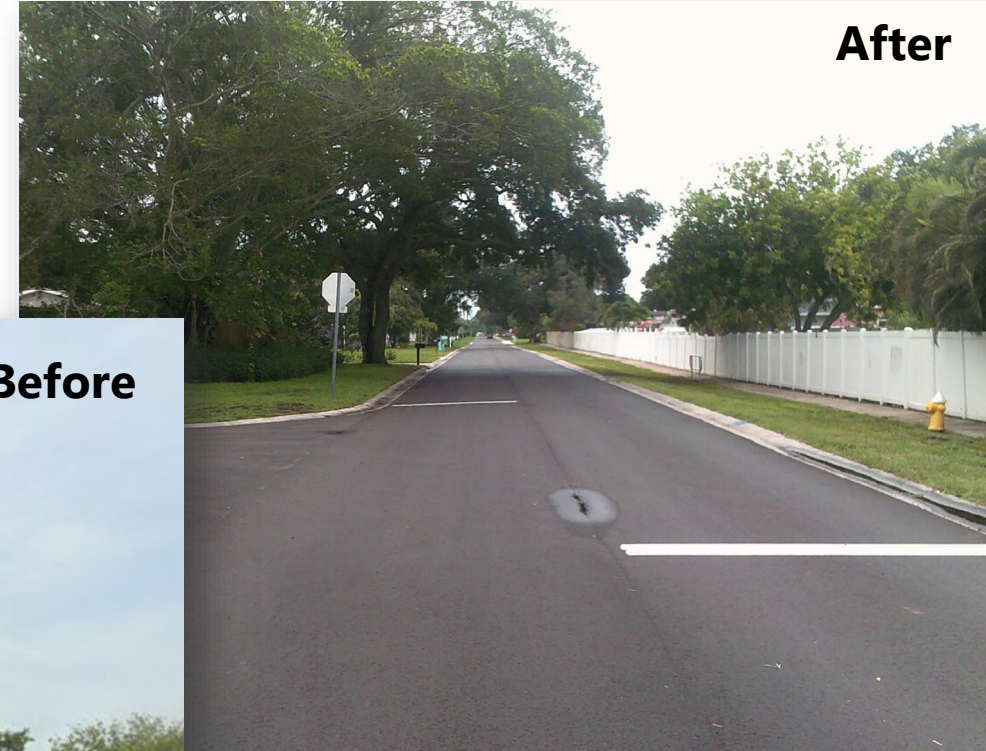
Dedicated Millage LOS Improvements

Local Road Resurfacing

- Local road lane miles rated fair or better pavement condition index
- FY22 – 33%
- FY24 – 62%

Local Road Resurfacing

- FY22 – 51 lane miles
- FY23 – 126 lane miles
- FY24 – 140 lane miles



ATMS Investments

Signal Retiming

- **Current LOS 5% (LOS F) per year**
- **Best Practice 20-25% per year**
 - 70% over the next 3 years (LOS C)
- **FY24 – 8 corridors in process**

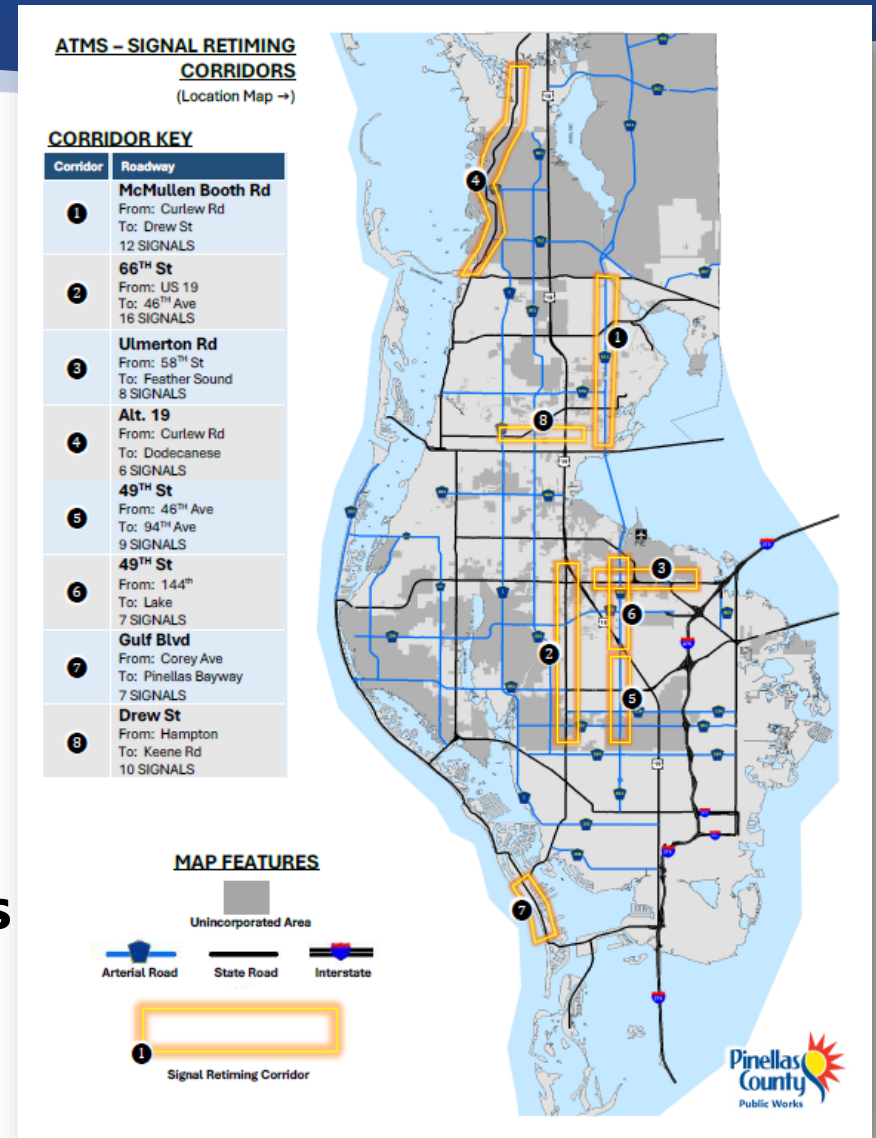
Adaptive Intersections

- **Self-optimizing signal timing**
- **FY24 – 26 intersections being tested**

Video Analytics

- **Installation of predictive intersection analytics**
- **FY24 – 6 intersections installed**

Other efforts



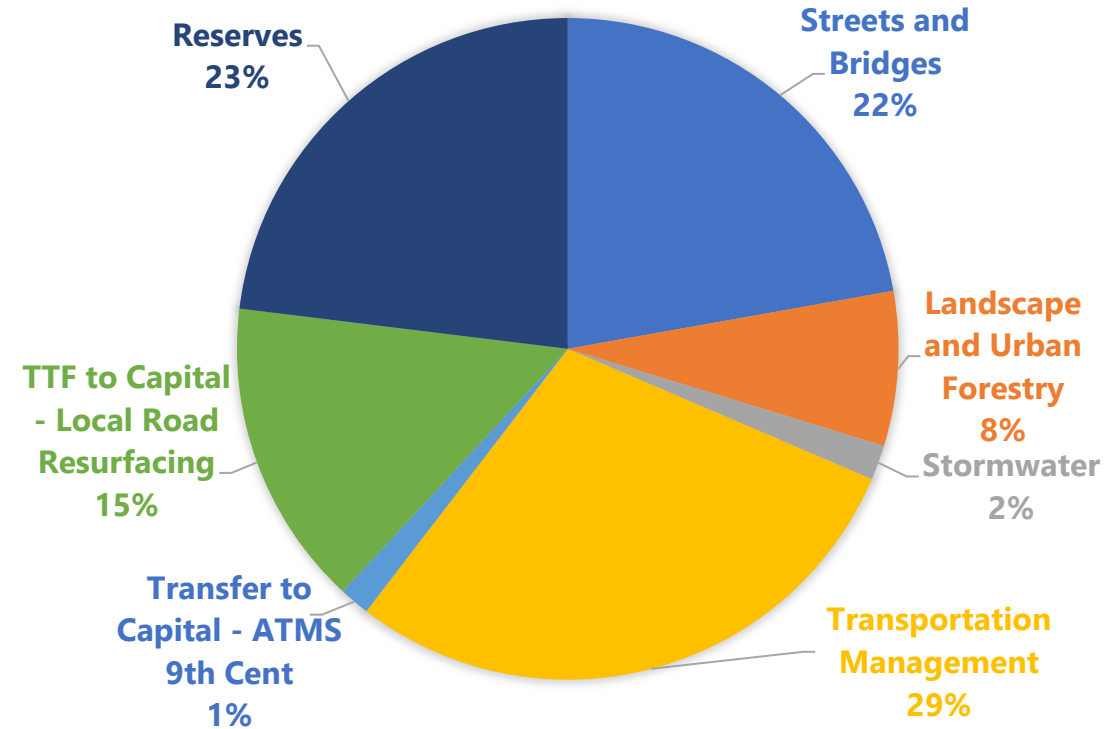
Proposed FY25 Transportation Program Budget



Program	Proposed FY25 Budget
Streets and Bridges	\$25,474,370
Landscape and Urban Forestry	\$8,664,890
Stormwater	\$1,959,590
Transportation Management	\$33,256,330*
Transfer to Capital - ATMS 9th Cent	\$1,700,000
TTF to Capital - Local Road Resurfacing	\$17,265,000
Reserves	\$26,467,460
TOTAL	\$114,787,640

* Includes \$12M from FY25 – FY26 for ATMS improvements
 Reauthorization timelines: 9th Cent in FY26; LOFT in FY27

FY25 PROPOSED TRANSPORTATION BUDGET



Designated Millages and One-Time Funding



Proposed for FY25

Transportation Trust Fund is subsidized by a designated millage (0.1279 = ~ \$16M)

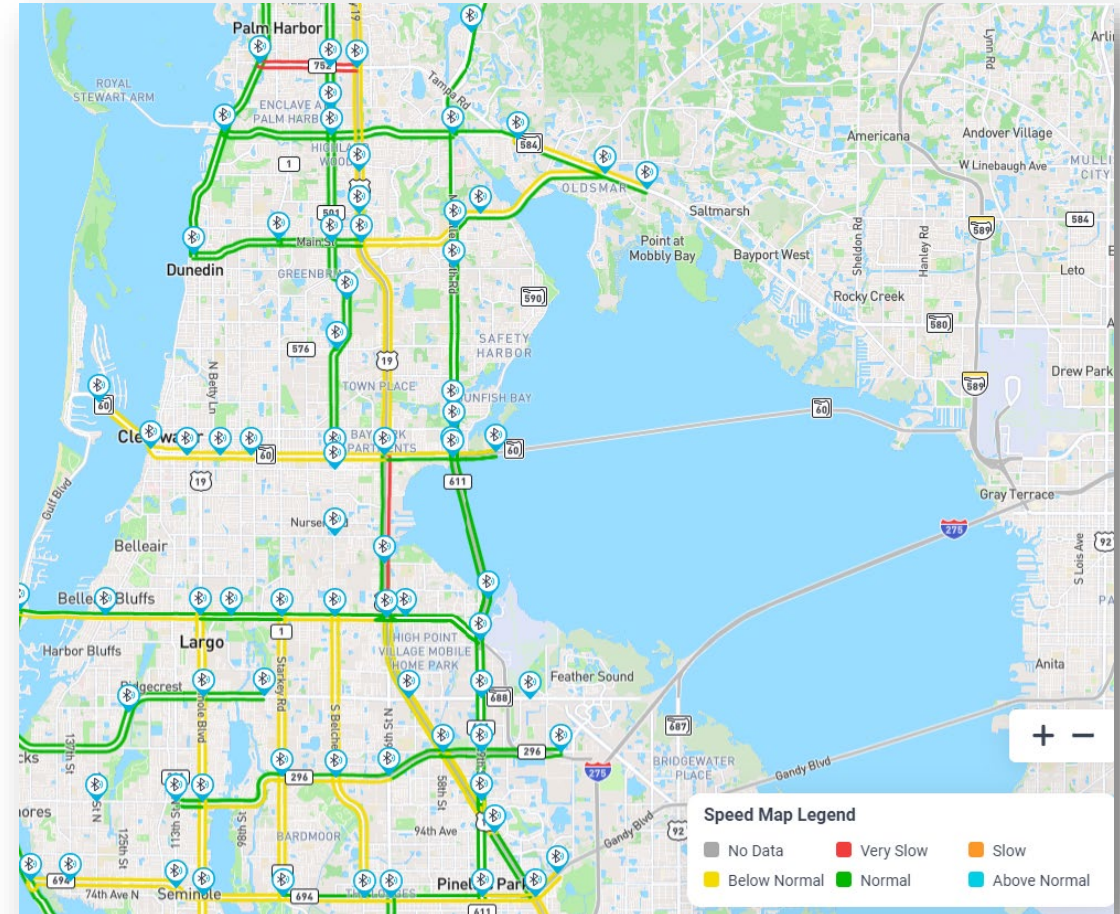
- **Continuing subsidy to stabilize fund**

Level of Service designated millages (0.1752/0.0281 = ~\$25M)

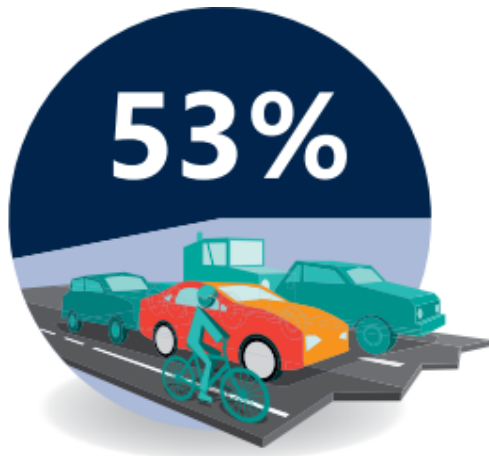
- **LOS improvement programs and fund**

General Fund ATMS Investment

- **\$12M (FY25 – FY26)**



2023 Community Survey Results



53% rate transportation system as good or excellent. Most strongly support additional investment.

While transportation ratings were mainly on par with national averages, ease of travel by car, ease of public parking and traffic flow on major streets fell below the national average. Residents expressed support for additional investments in transportation-related projects, especially improvements to traffic mitigation, roadways and pedestrian infrastructure.

Rate how important is it for Pinellas County to focus on the quality of the transportation system

- **84% said essential or very important**

Ease of walking or travel by bike

- **56% & 50% said excellent or good**

Ease of travel by car

- **48% said excellent or good**

Quality of sidewalk maintenance, street repair and traffic signal timing

- **51%, 44%, and 37% said excellent or good**

2024 Community Survey is live!



Summary



Transportation infrastructure value: ~\$6.5B

Asset management approach

- **Data driven**
- **Maximize the life span and ROI of our infrastructure**

Investments

- **Achieve goals of longer-lived infrastructure**
- **Improved service**
- **Achieve community goals**



Thank You



www.pinellascounty.org/publicworks