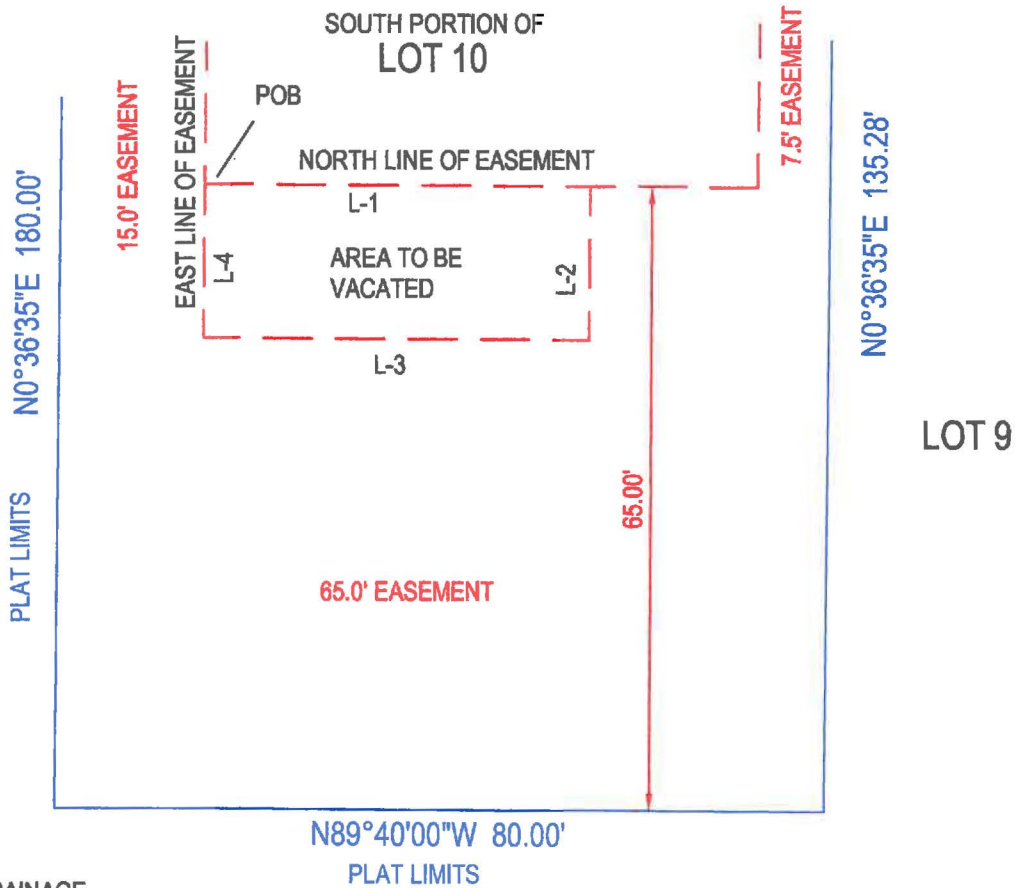


SEE PAGE 2 FOR LEGAL DESCRIPTION

LEGAL DESCRIPTION AND SKETCH OF AREA TO BE VACATED:

A PART OF THE 65.00 FOOT EASEMENT ON THE SOUTH PORTION OF LOT 10, OZONA TRAIL, AS SHOWN ON THE PLAT THEREOF, RECORDED IN PLAT BOOK 109, PAGE 77, OF THE PUBLIC RECORDS OF PINELLAS COUNTY, FLORIDA



ALL EASEMENTS ARE DRAINAGE, UTILITY & MAINTENANCE EASEMENTS PER PLAT

LEGEND:

POB = POINT OF BEGINNING = INTERSECTION OF NORTH LINE OF 65' EASEMENT WITH EAST LINE OF 15' EASEMENT

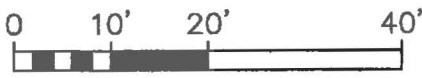
- L-1 = S89°40'00"E 40.00'
- L-2 = S00°36'35"W 16.00'
- L-3 = N89°40'00"W 40.00'
- L-4 = N00°36'35"E 16.00'

NOT A SURVEY

I HEREBY CERTIFY THAT THIS SKETCH WAS MADE UNDER MY RESPONSIBLE CHARGE AND TO THE BEST OF MY KNOWLEDGE AND BELIEF SAID SURVEY MEETS THE MINIMUM TECHNICAL STANDARDS SET FORTH BY THE FLORIDA BOARD OF PROFESSIONAL LAND SURVEYORS IN CHAPTER 5J-17 FLORIDA ADMINISTRATIVE CODE FURTHER, THIS DOCUMENT IS ELECTRONICALLY SIGNED AND SEALED PURSUANT TO SECTION 472.027, OF THE FLORIDA STATUTES AND CHAPTER 5J-17 OF THE FLORIDA ADMINISTRATIVE CODE.

Surveyor & Mapper Number 4636

DATE SIGNED 6-3-2014



SCALE: 1" = 20'

Know It Now, Inc.

Florida Business Certificate Of Authorization Number LB 6912

2011 HEIDELBERG AVENUE, DUNEDIN, FL

VOICE 727-415-8305 FAX 727-736-2455



FLORIDASURVEYOR@AOL.COM

Handwritten signature of Bill Hyatt.

BILL HYATT

PAGE 2 OF 2

SEE PAGE 1 FOR  
SKETCH

LEGAL DESCRIPTION AND SKETCH OF AREA TO BE VACATED:

A PART OF THE 65.00 FOOT EASEMENT ON THE SOUTH PORTION OF LOT 10,  
OZONA TRAIL, AS SHOWN ON THE PLAT THEREOF, RECORDED IN PLAT BOOK 109,  
PAGE 77, OF THE PUBLIC RECORDS OF PINELLAS COUNTY, FLORIDA

LEGAL DESCRIPTION:

BEING A PORTION OF 65 FOOT EASEMENT ON THE SOUTH PORTION OF LOT 10,  
OZONA TRAIL, AS SHOWN ON THE PLAT THEREOF, RECORDED IN PLAT BOOK 109,  
PAGE 77, OF THE PUBLIC RECORDS OF PINELLAS COUNTY, FLORIDA, MORE  
PARTICULARLY DESCRIBED AS FOLLOWS:

BEGINNING AT A POINT, SAID POINT BEING THE POINT OF INTERSECTION OF  
THE EAST LINE OF A 15 FOOT EASEMENT ALONG THE WEST SIDE OF SAID LOT 10  
WITH THE NORTH LINE OF A 65 FOOT EASEMENT ALONG THE SOUTH SIDE OF  
SAID LOT 10; THENCE DEPART THE EAST LINE AFOREMENTIONED AND RUN  
ALONG THE NORTH LINE AFOREMENTIONED, S89°40'00"E, A DISTANCE OF 40.00  
FEET; THENCE DEPARTING SAID NORTH LINE AND RUN S00°36'35"W, A DISTANCE  
OF 16.00 FEET; THENCE RUN N89°40'00"W, A DISTANCE OF 40.00 FEET; THENCE  
RUN N00°36'35"E, A DISTANCE OF 16.00 FEET TO THE POINT AND PLACE OF THE  
BEGINNING.

CONTAINING 640 SQUARE FEET.

Reviewed by: CH SBR  
Date: 7-28-14  
SFN # SD1-1461

**Know It Now, Inc.**

Florida Business Certificate Of  
Authorization Number LB 6912

LOCATION = 2011 HEIDELBERG AVENUE, DUNEDIN, FL  
VOICE 727-415-8305 FAX 727-736-2455

FLORIDASURVEYOR@AOL.COM

BILL HYATT