

Surrounding Counties

LU-08-05-18

Location Map

From: Residential/Office/Retail
Land Use
To: Commercial General

03/30/15/00000/440/0700

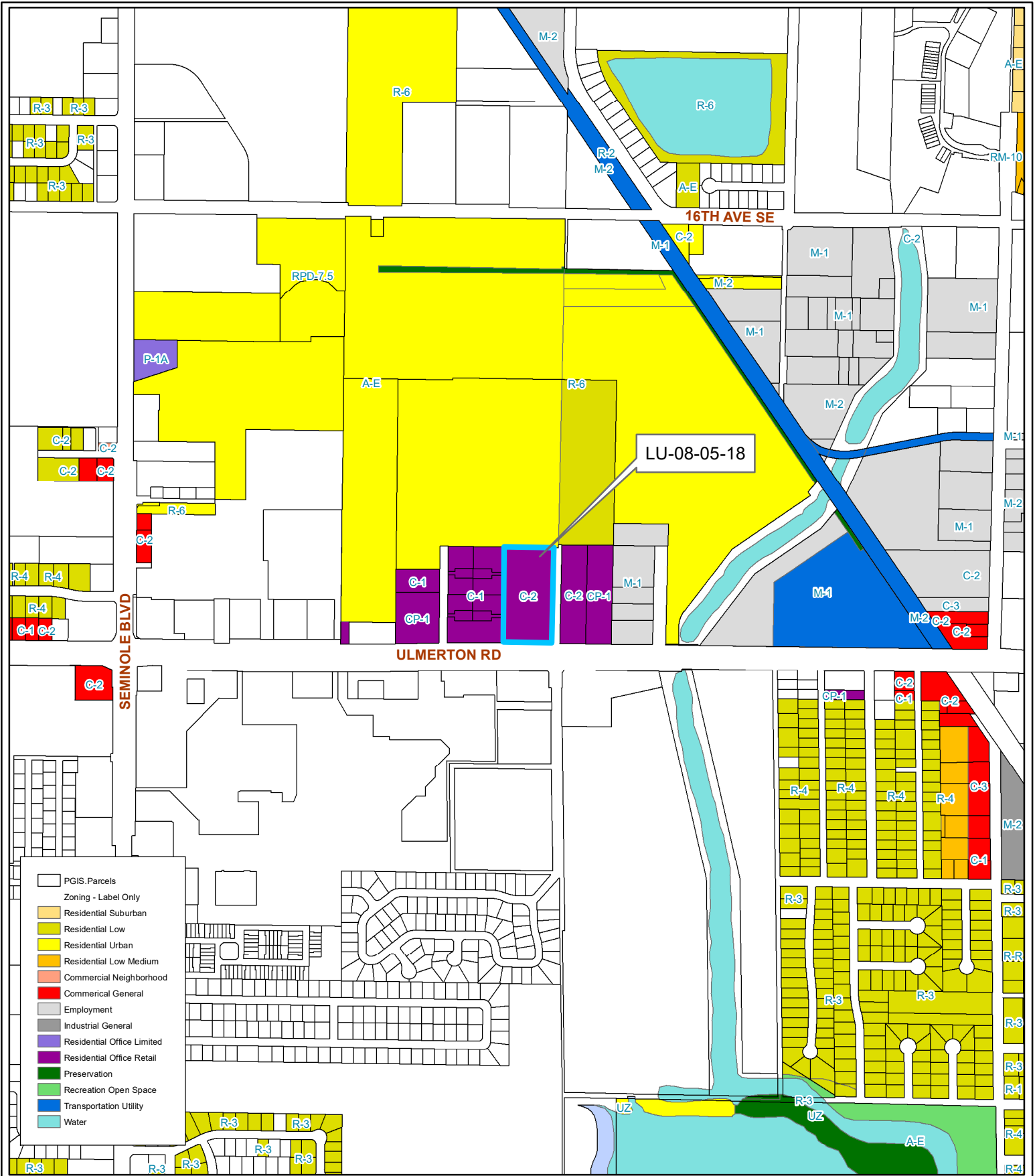
Prepared by: Pinellas County Planning Department



Date: 3/23/2018



1 inch = 4.5 miles



LU-08-05-18
Current Land Use

Land Use
From: Residential/Office/Retail
To: Commercial General



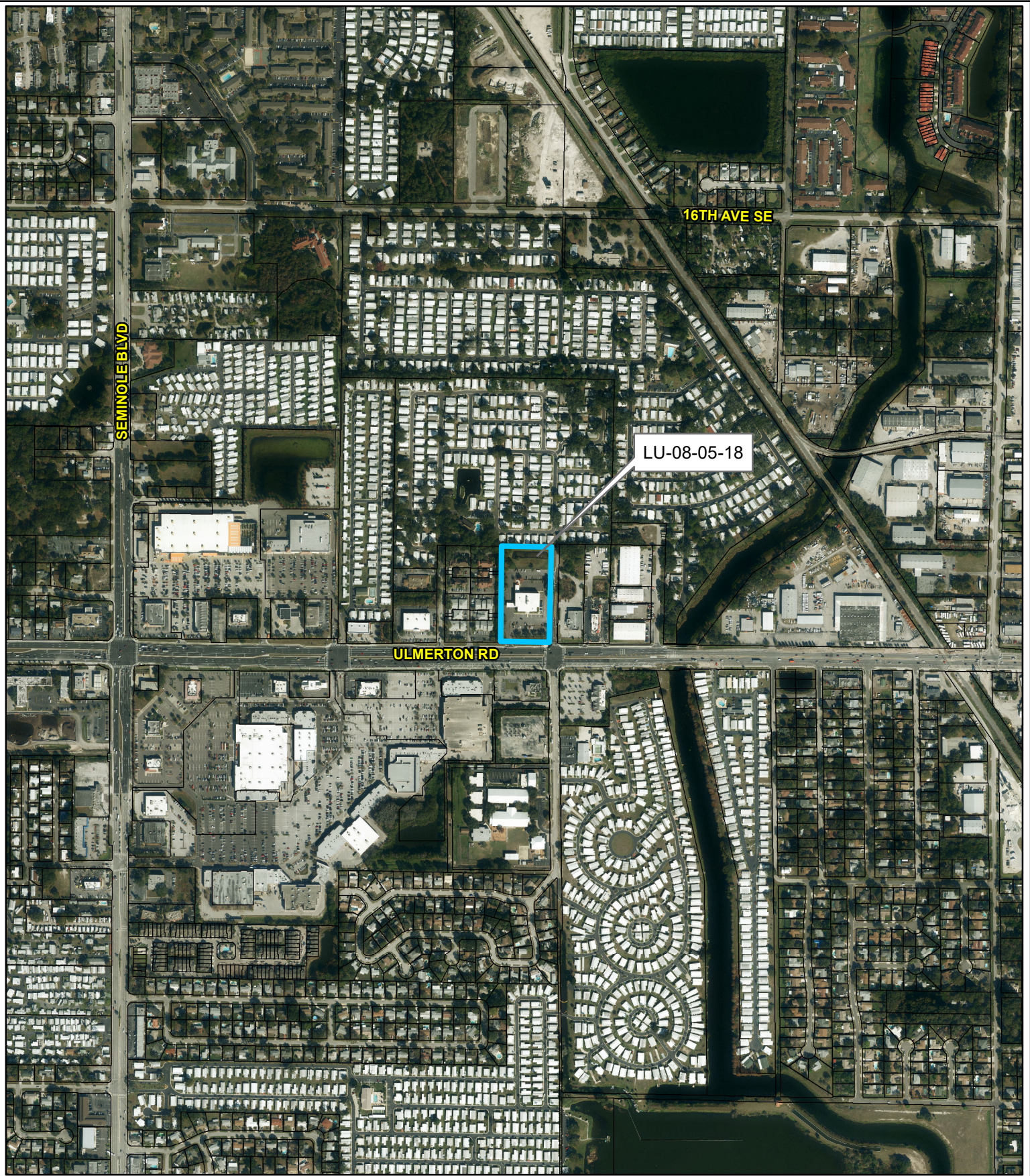
03/30/15/00000/440/0700

Prepared by: Pinellas County Planning Department



Date: 3/23/2018

1 inch = 0.15 miles



LU-08-05-18

Aerial Map

Land Use

From: Residential/Office/Retail

To: Commercial General

03/30/15/00000/440/0700

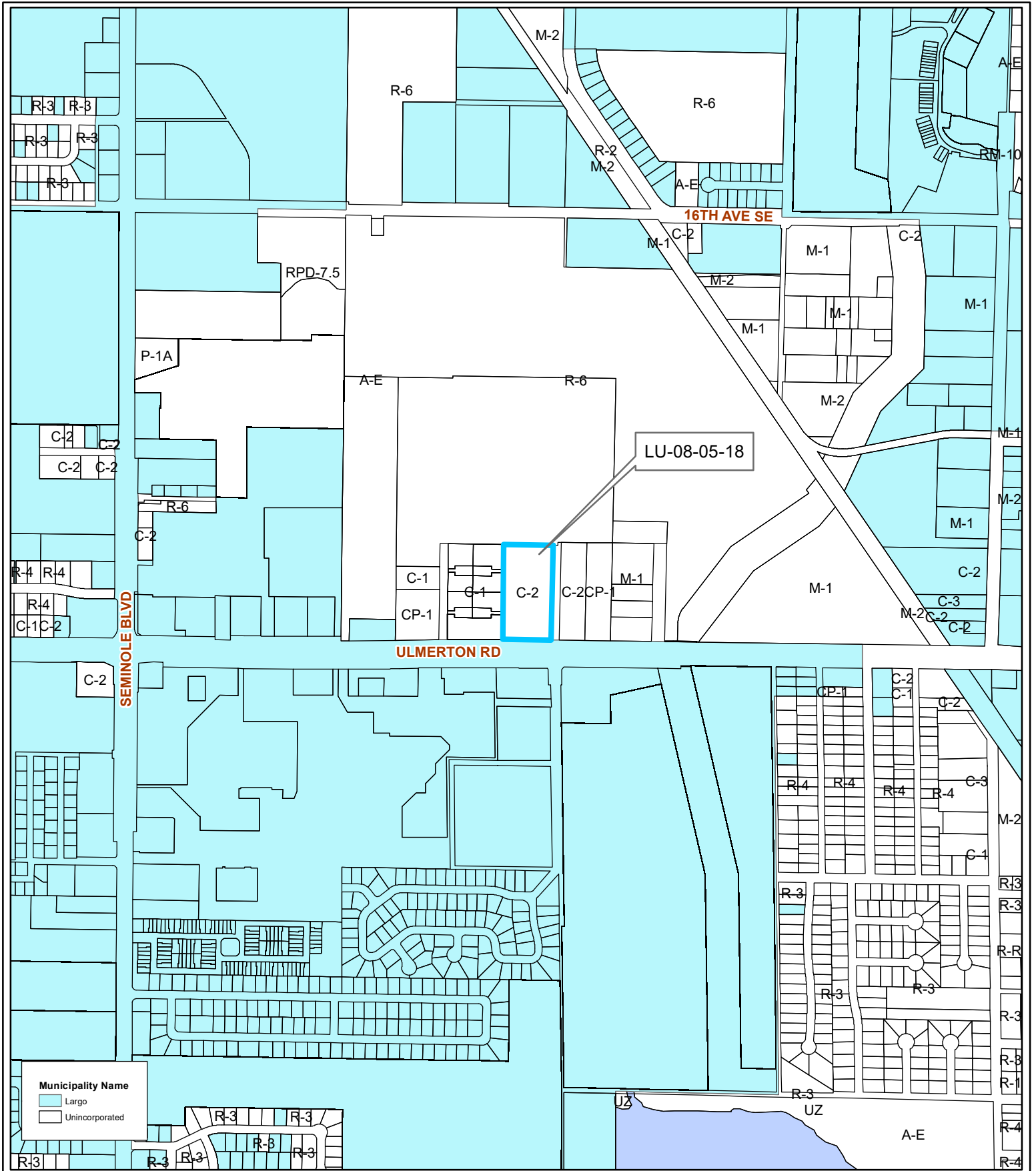
Prepared by: Pinellas County Planning Department



Date: 3/23/2018



1 inch = 0.15 miles



LU-08-05-18

Municipal Map

From: Residential/Office/Retail
Land Use
To: Commercial General

03/30/15/00000/440/0700

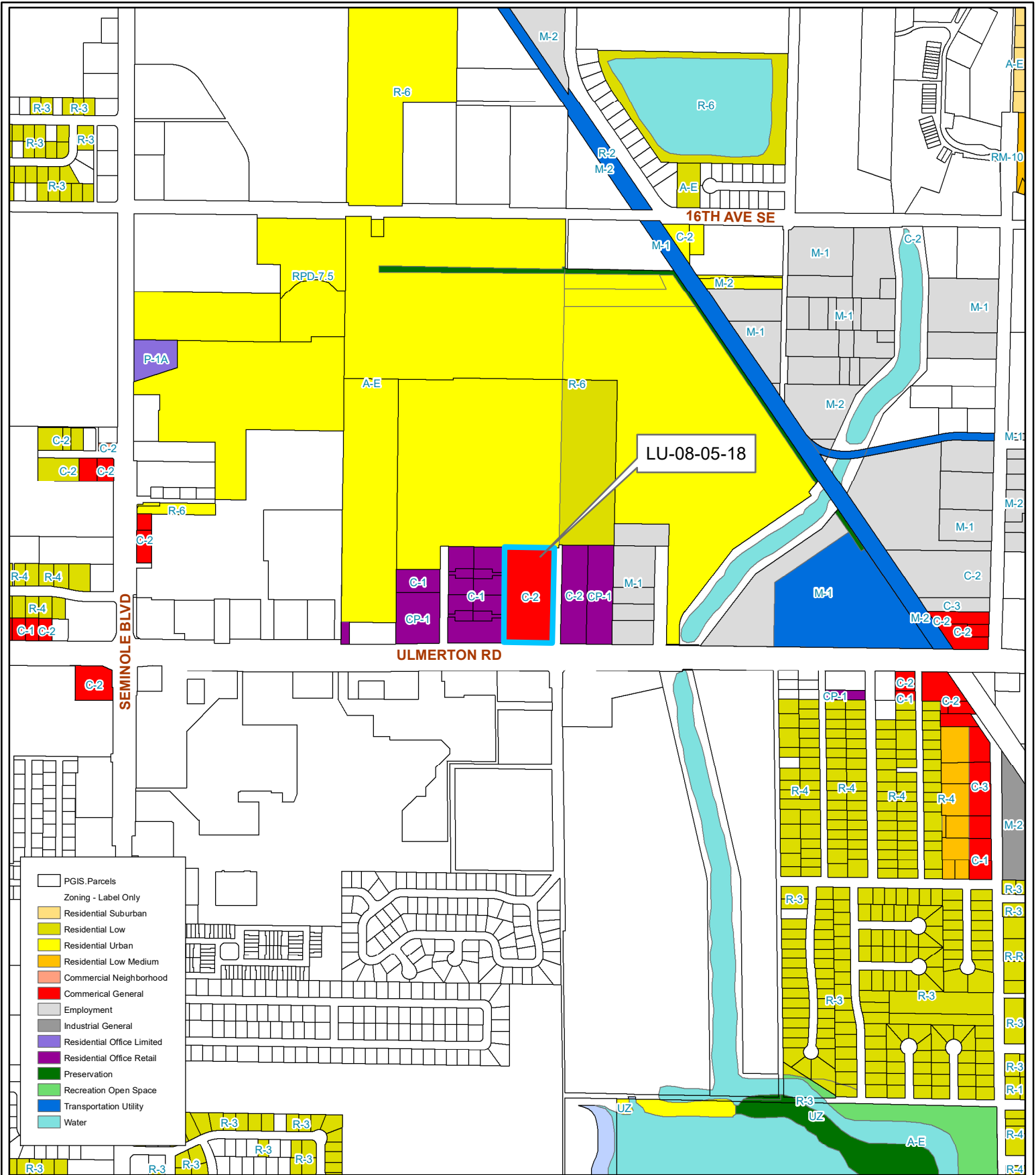
Prepared by: Pinellas County Planning Department



Date: 3/23/2018



1 inch = 0.15 miles



- PGIS Parcels
- Zoning - Label Only**
- Residential Suburban
- Residential Low
- Residential Urban
- Residential Low Medium
- Commercial Neighborhood
- Commercial General
- Employment
- Industrial General
- Residential Office Limited
- Residential Office Retail
- Preservation
- Recreation Open Space
- Transportation Utility
- Water

LU-08-05-18

Proposed Land Use

From: Residential/Office/Retail
Land Use
To: Commercial General

03/30/15/00000/440/0700

Prepared by: Pinellas County Planning Department



Date: 3/23/2018



1 inch = 0.15 miles