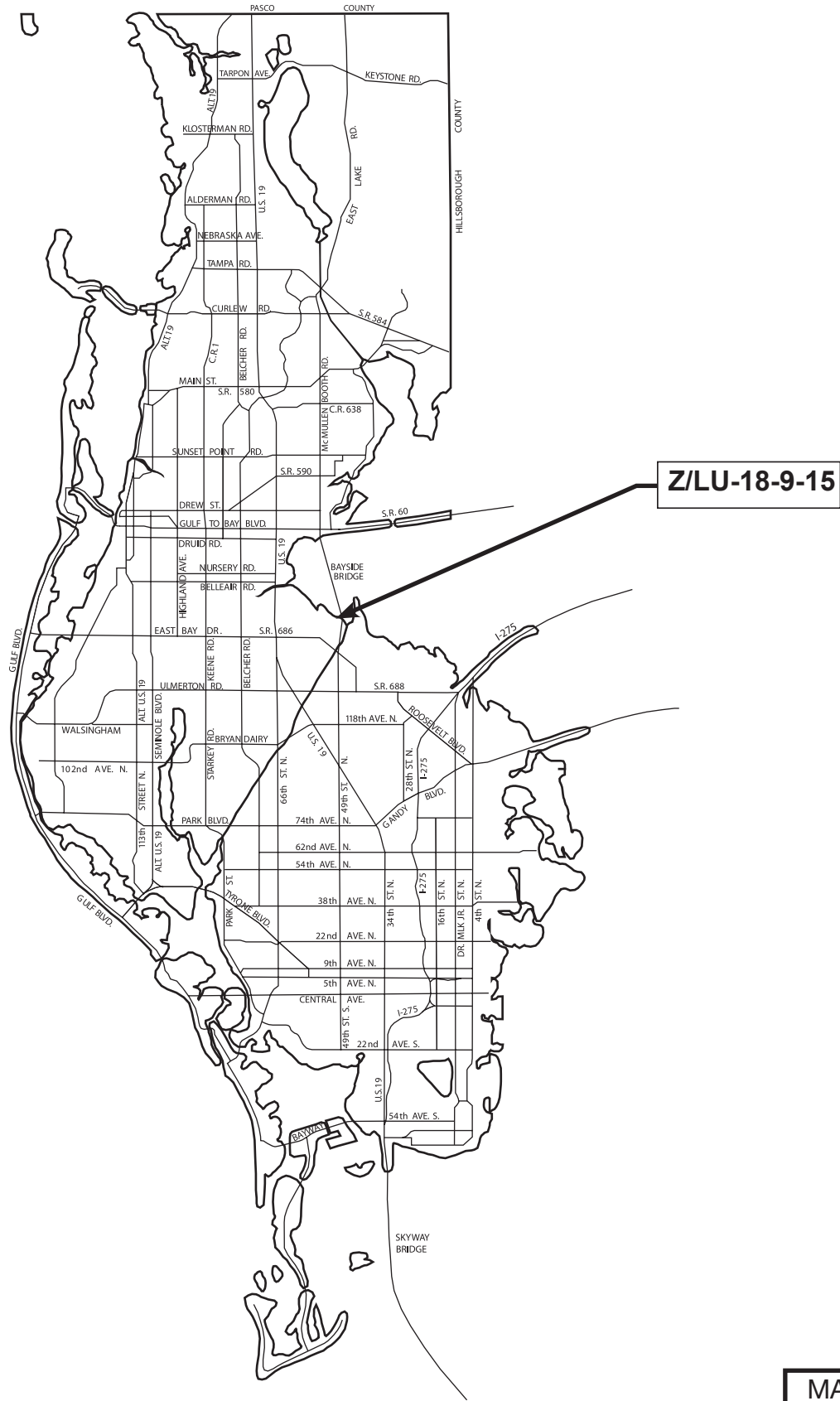


LOCATION MAP



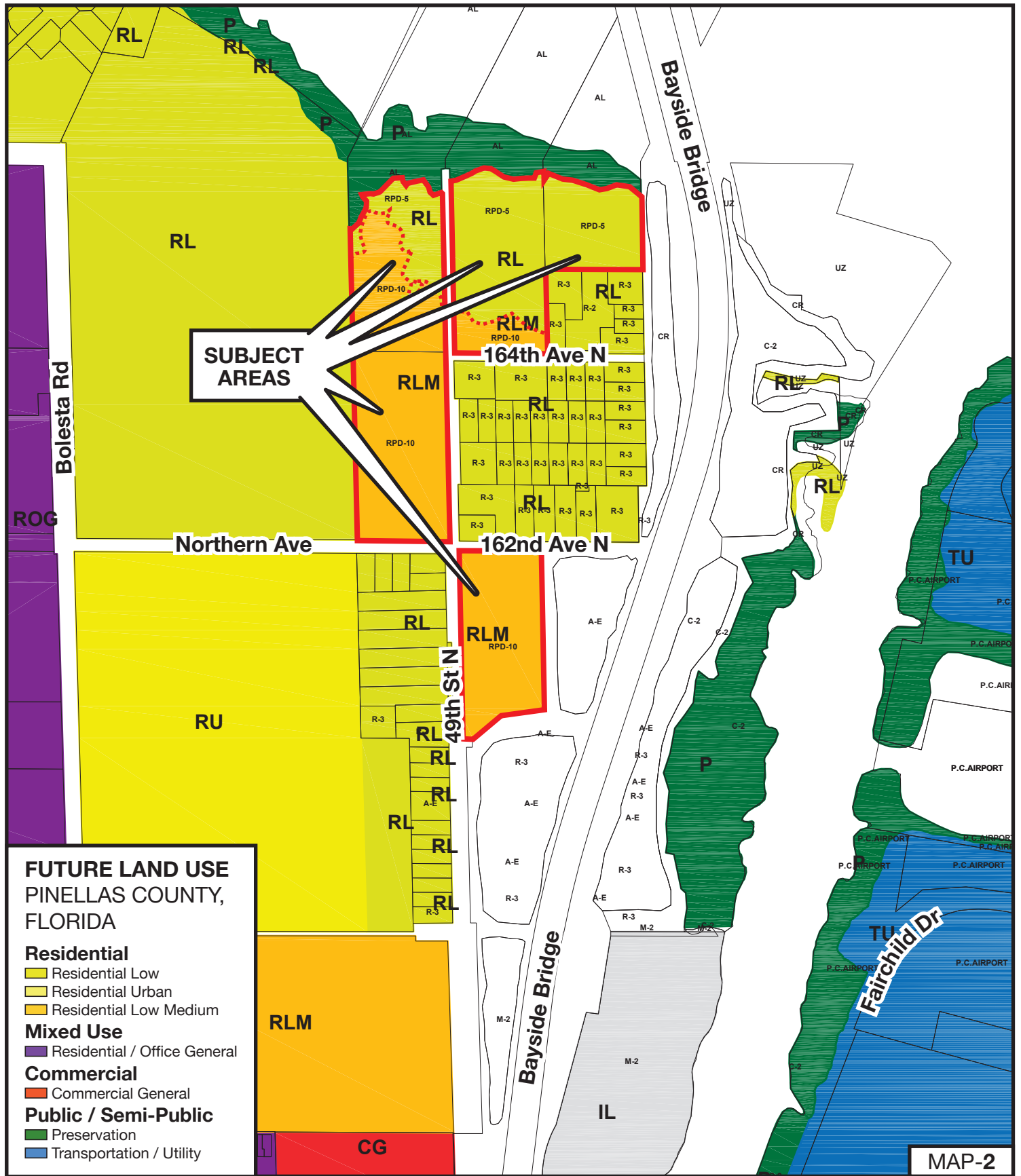
MAP-1

Z/LU-18-9-15

ZONING From: RPD-10 & RPD-5, Residential Planned Development, 10 & 5 units per acre
 To: RPD-5, Residential Planned Development, 5 units per acre (7.2 acres), A-E, Agricultural Estate Residential (3.8 acres), R-2, Single Family Residential (3.9 acres), R-3, Single Family Residential (2.8 acres), & retaining RPD-5 on 1.5 acres.
LAND USE From: Residential Low Medium To: Residential Low (11.8 acres)

Parcel I.D. 33/29/16/70380/100/1200, 2000, 0500, 0400 & 0300
 Prepared by: Pinellas County Department of Planning and Development Services December 2014





**FUTURE LAND USE
PINELLAS COUNTY,
FLORIDA**

Residential
 Residential Low
 Residential Urban
 Residential Low Medium

Mixed Use
 Residential / Office General

Commercial
 Commercial General

Public / Semi-Public
 Preservation
 Transportation / Utility

Z/LU-18-9-15

ZONING From: RPD-10 & RPD-5, Residential Planned Development, 10 & 5 units per acre
 To: RPD-5, Residential Planned Development, 5 units per acre (7.2 acres), A-E, Agricultural Estate Residential (3.8 acres), R-2, Single Family Residential (3.9 acres), R-3, Single Family Residential (2.8 acres), & retaining RPD-5 on 1.5 acres.

LAND USE From: Residential Low Medium To: Residential Low (11.8 acres)

Parcel I.D. 33/29/16/70380/100/1200, 2000, 0500, 0400 & 0300
 Prepared by: Pinellas County Department of Planning and Development Services December 2014



MAP-2



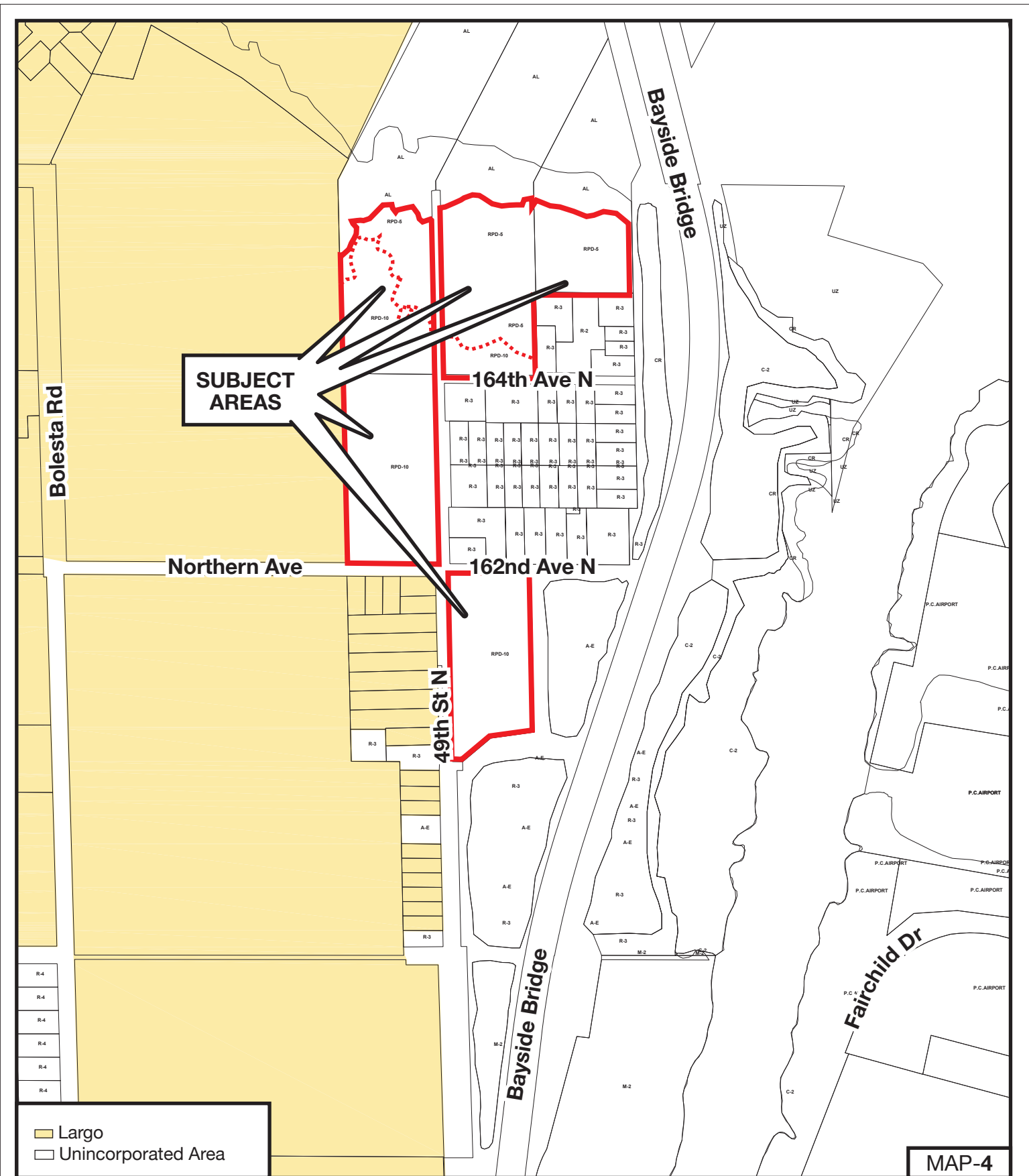
MAP-3

Z/LU-18-9-15

ZONING From: RPD-10 & RPD-5, Residential Planned Development, 10 & 5 units per acre
 To: RPD-5, Residential Planned Development, 5 units per acre (7.2 acres), A-E, Agricultural Estate Residential (3.8 acres), R-2, Single Family Residential (3.9 acres), R-3, Single Family Residential (2.8 acres), & retaining RPD-5 on 1.5 acres.
LAND USE From: Residential Low Medium To: Residential Low (11.8 acres)

Parcel I.D. 33/29/16/70380/100/1200, 2000, 0500, 0400 & 0300
 Prepared by: Pinellas County Department of Planning and Development Services December 2014





SUBJECT AREAS

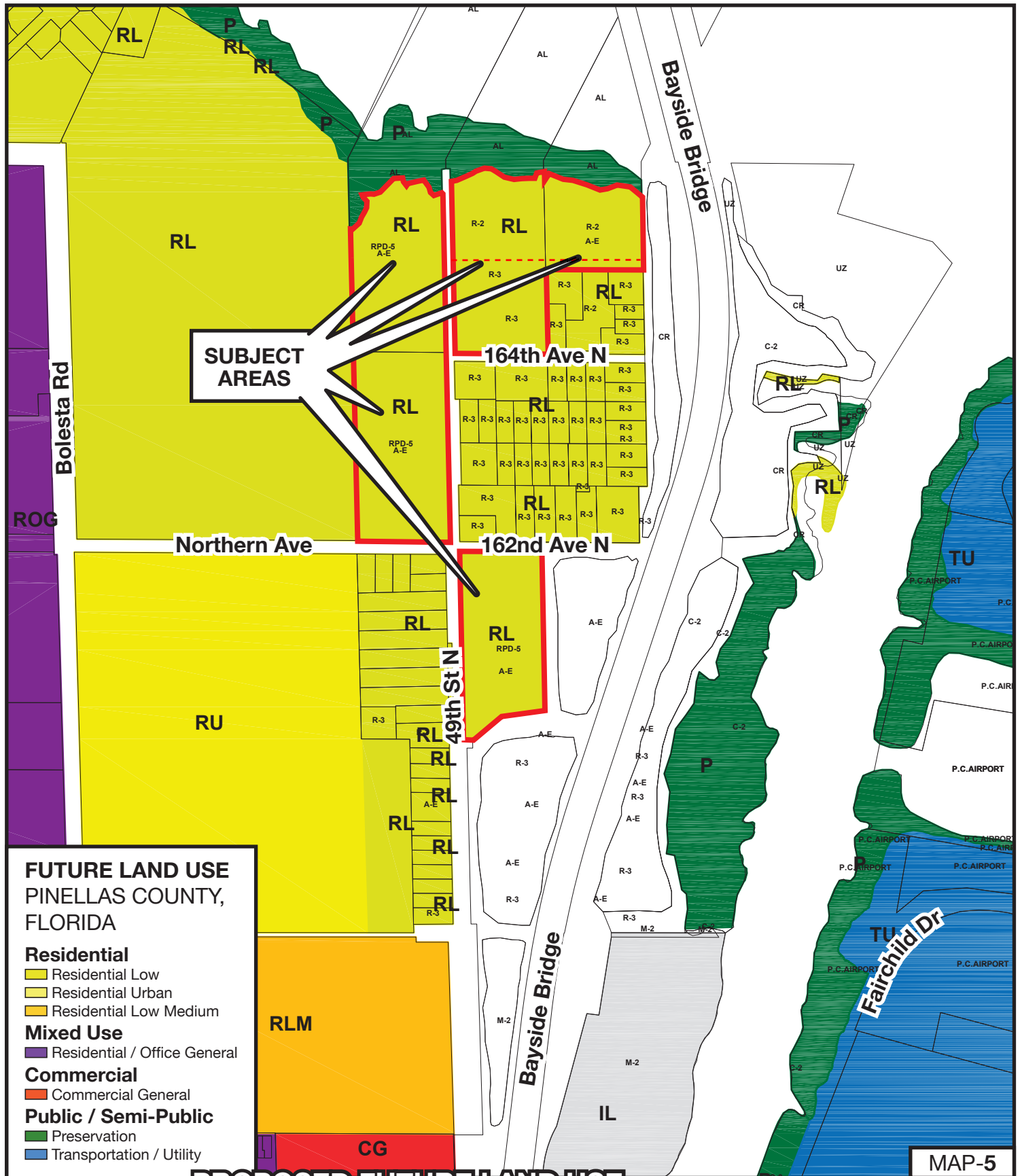
Z/LU-18-9-15

ZONING From: RPD-10 & RPD-5, Residential Planned Development, 10 & 5 units per acre
 To: RPD-5, Residential Planned Development, 5 units per acre (7.2 acres), A-E, Agricultural Estate Residential (3.8 acres), R-2, Single Family Residential (3.9 acres), R-3, Single Family Residential (2.8 acres), & retaining RPD-5 on 1.5 acres.
LAND USE From: Residential Low Medium To: Residential Low (11.8 acres)

Parcel I.D. 33/29/16/70380/100/1200, 2000, 0500, 0400 & 0300
 Prepared by: Pinellas County Department of Planning and Development Services December 2014



MAP-4



**FUTURE LAND USE
PINELLAS COUNTY,
FLORIDA**

Residential
 Residential Low
 Residential Urban
 Residential Low Medium

Mixed Use
 Residential / Office General

Commercial
 Commercial General

Public / Semi-Public
 Preservation
 Transportation / Utility

PROPOSED FUTURE LAND USE

Z/LU-18-9-15

ZONING From: RPD-10 & RPD-5, Residential Planned Development, 10 & 5 units per acre
 To: RPD-5, Residential Planned Development, 5 units per acre (7.2 acres), A-E, Agricultural Estate Residential (3.8 acres), R-2, Single Family Residential (3.9 acres), R-3, Single Family Residential (2.8 acres), & retaining RPD-5 on 1.5 acres.
LAND USE From: Residential Low Medium To: Residential Low (11.8 acres)

Parcel I.D. 33/29/16/70380/100/1200, 2000, 0500, 0400 & 0300
 Prepared by: Pinellas County Department of Planning and Development Services December 2014

