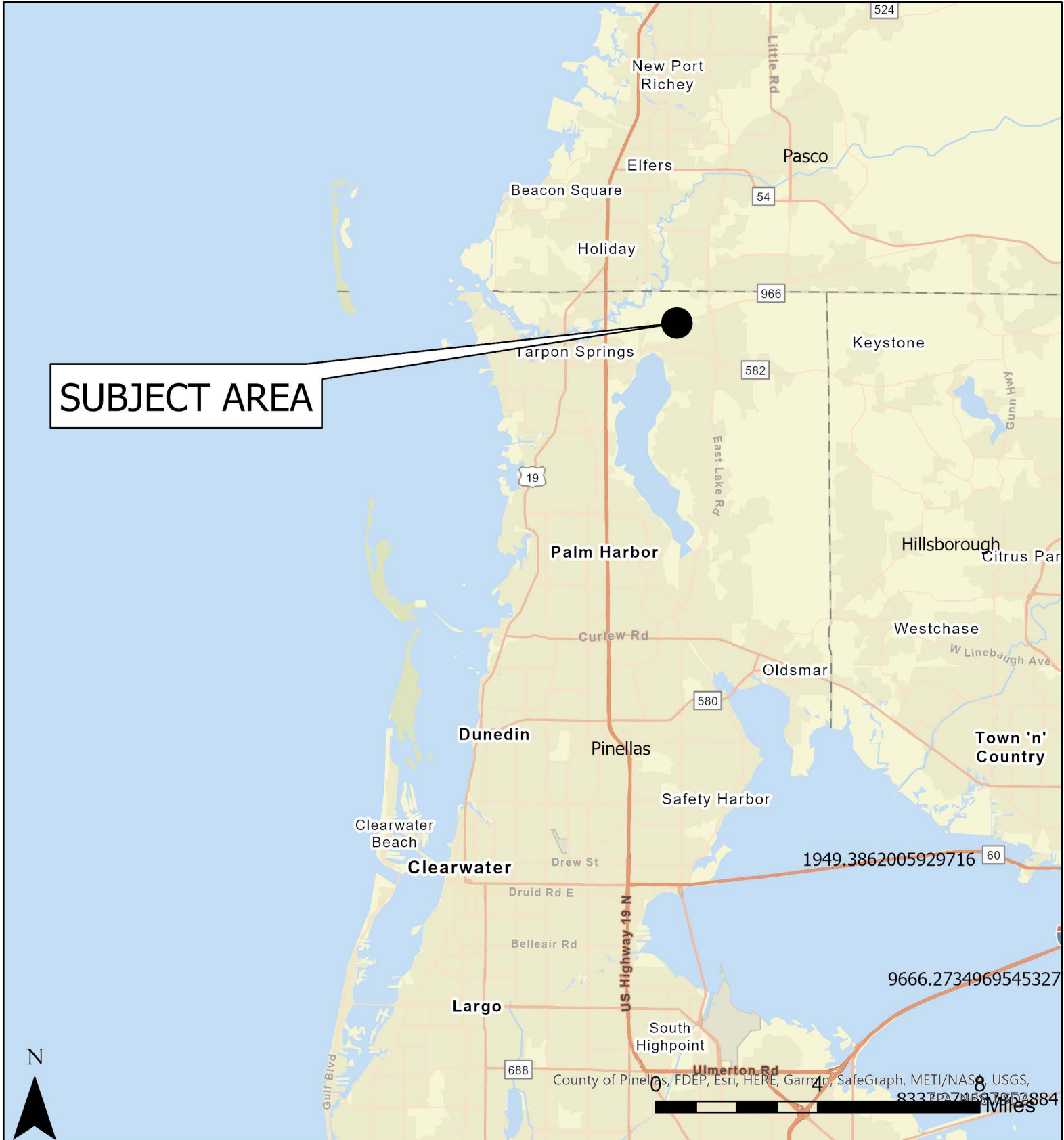


Case CW23-02

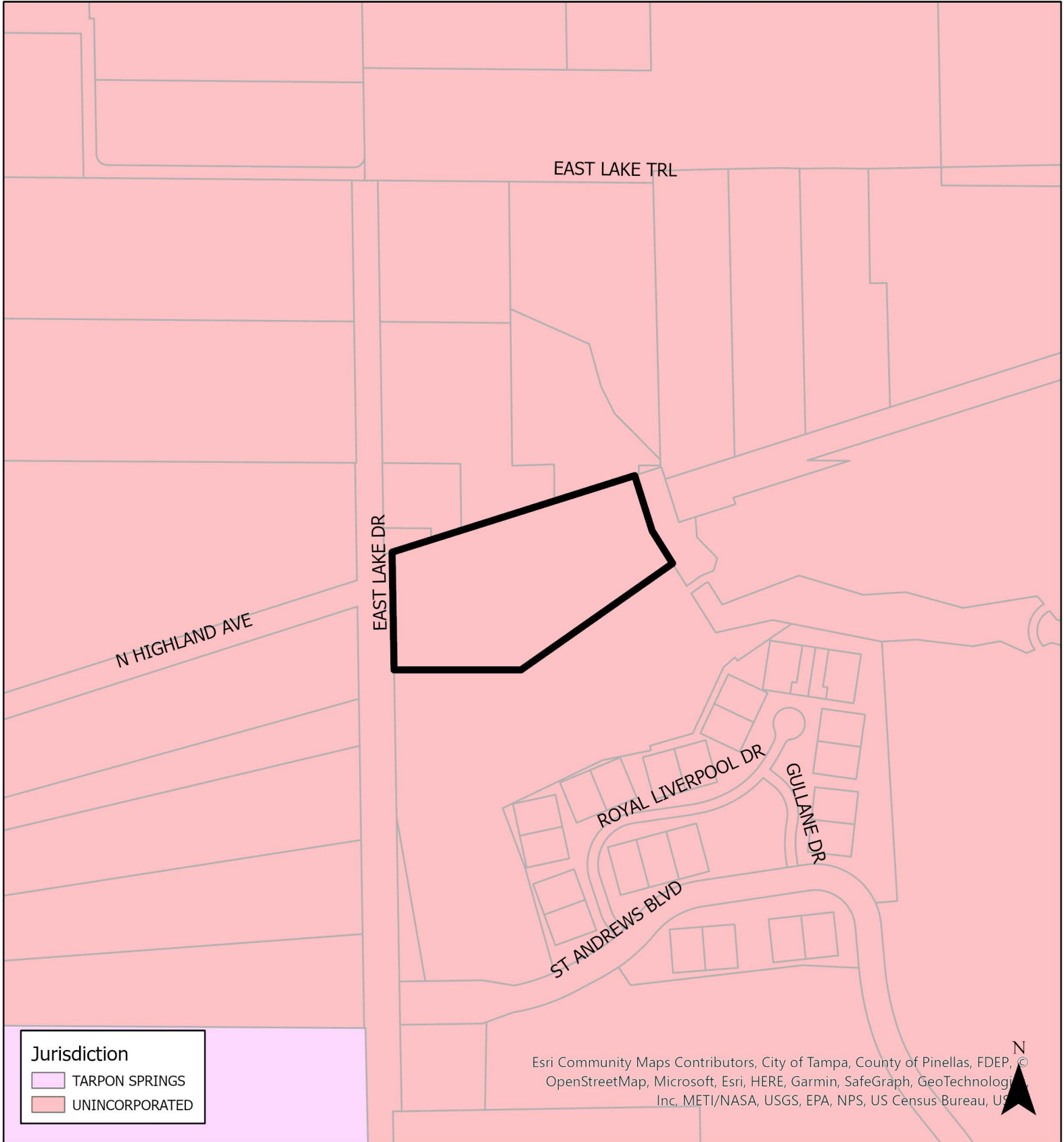
Map 1: Location Map



JURISDICTION: Pinellas County FROM: Public/Semi-Public
AREA: 4.29 acres m.o.l. TO: Residential Rural

Case CW23-02

Map 2: Jurisdictional Map



JURISDICTION: Pinellas County FROM: Public/Semi-Public
AREA: 4.29 acres m.o.l. TO: Residential Rural



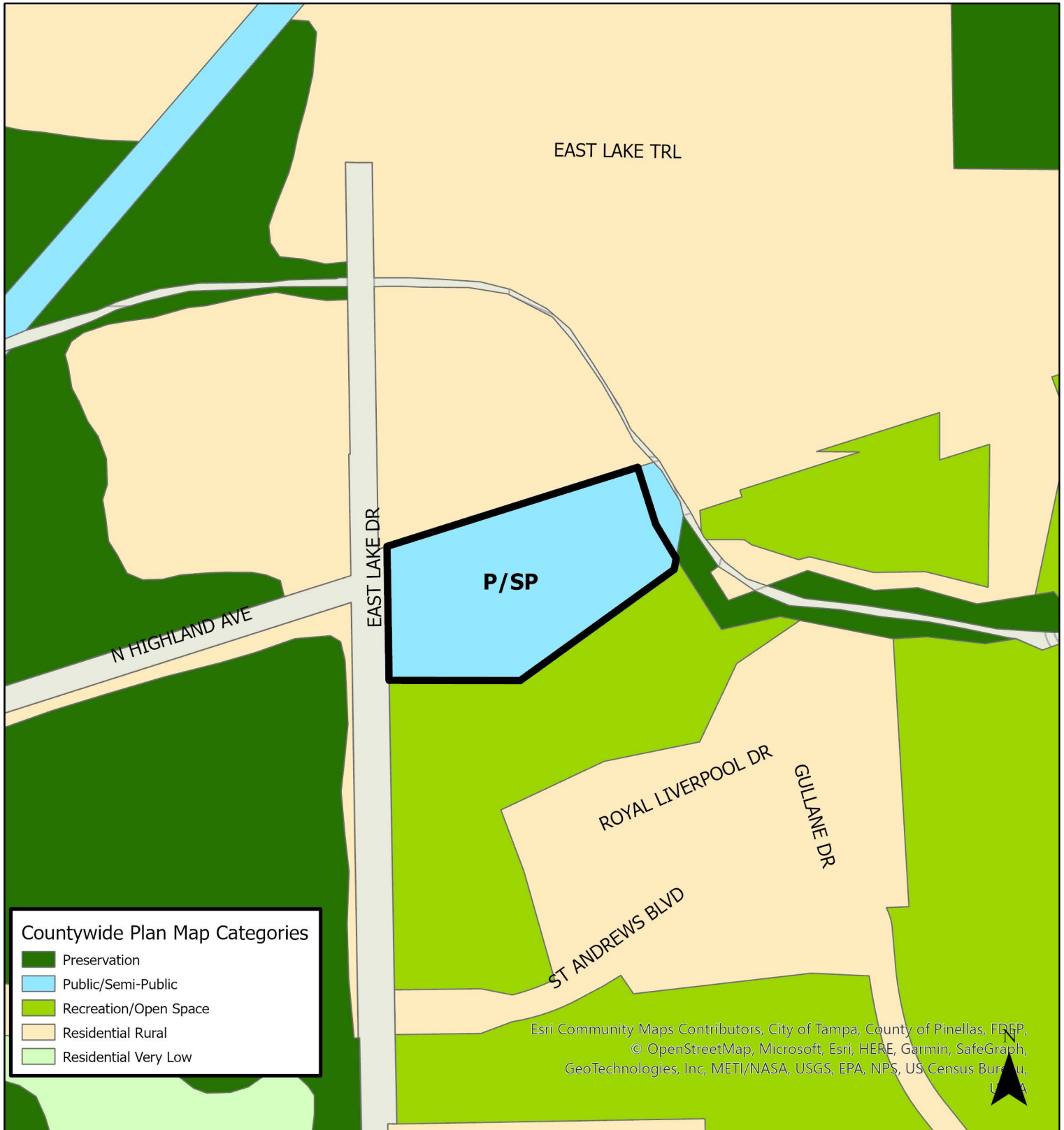
Case CW23-02

Map 3: Aerial Map



JURISDICTION: Pinellas County FROM: Public/Semi-Public
AREA: 4.29 acres m.o.l. TO: Residential Rural

0 100 200 500
Feet



JURISDICTION: Pinellas County **FROM: Public/Semi-Public**
AREA: 4.29 acres m.o.i. **TO: Residential Rural**

0 100 300 500
Feet



JURISDICTION: Pinellas County

FROM: Public/Semi-Public

0 115 230 460 Feet

AREA: 4.29 acres m.o.l.

TO: Residential Rural