

Map 1 - Location

CASE #: CW16-1

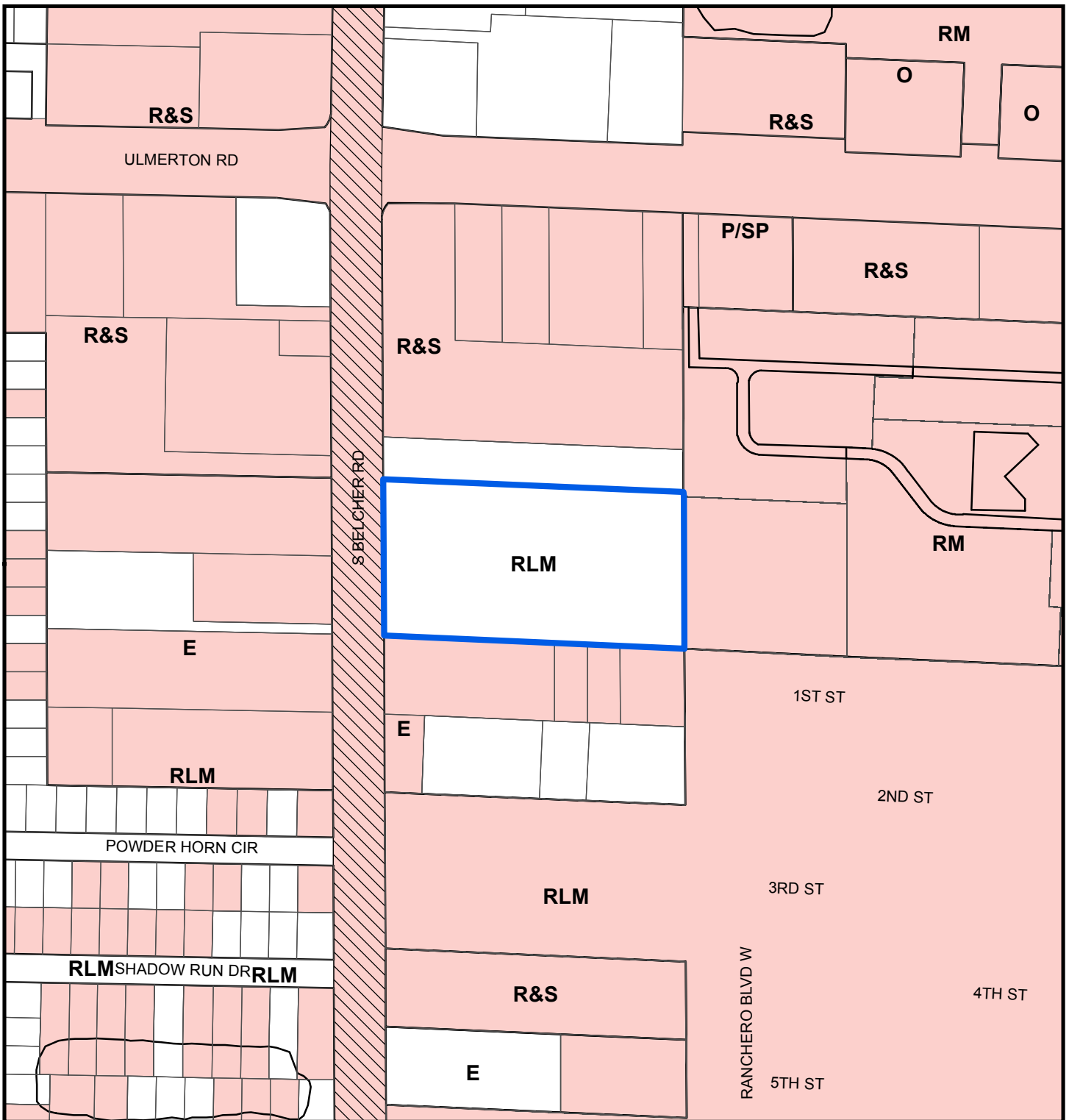
FROM: Residential Low Medium

AREA: 4.9 Acres

JURISDICTION: Pinellas County

TO: Residential Medium





Map 2 - Current Countywide Plan Map & Jurisdictional Map

CASE #: CW16-1

FROM: Residential Low Medium

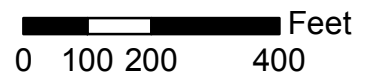
AREA: 4.9 Acres

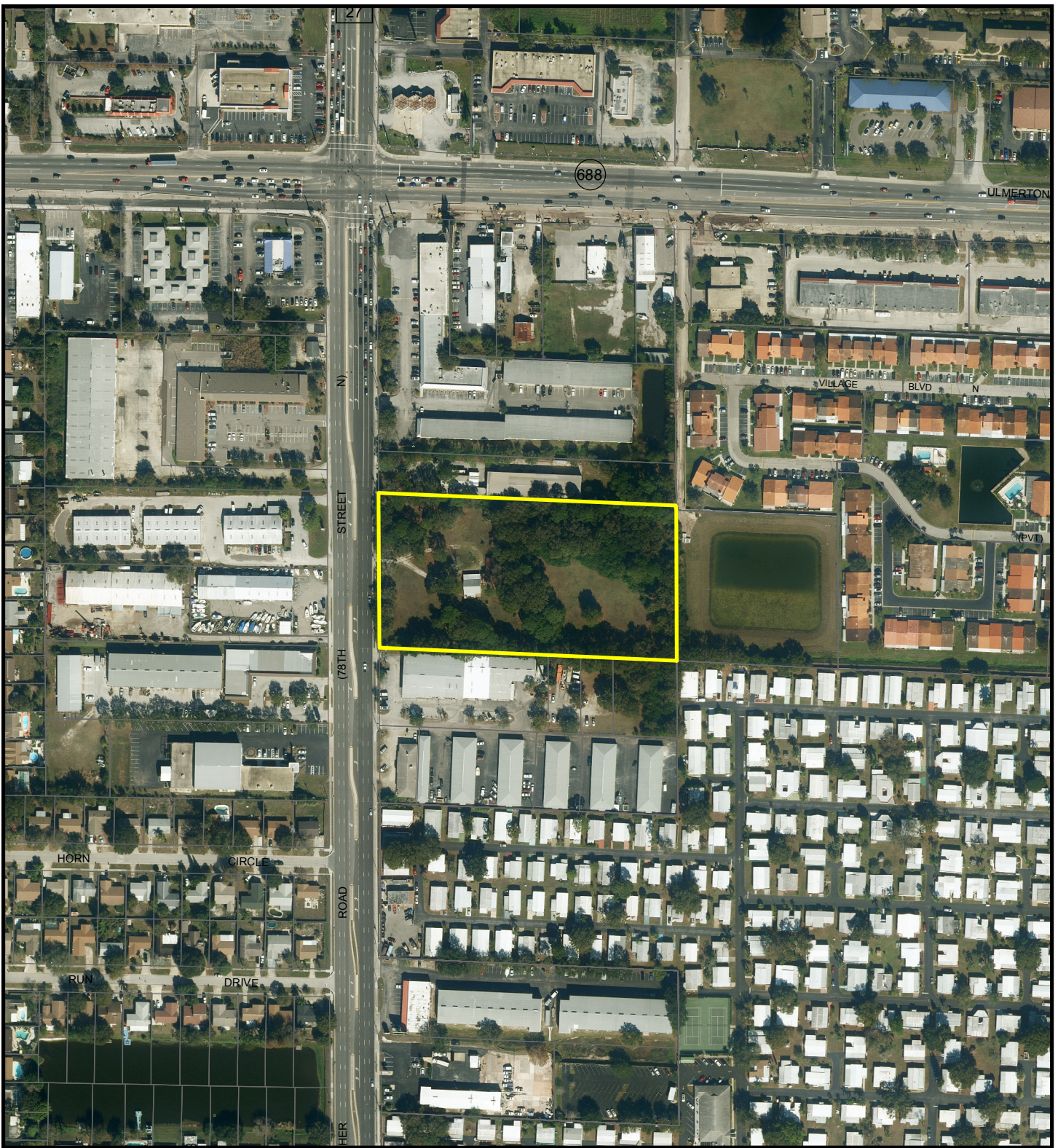
JURISDICTION: Pinellas County

TO: Residential Medium

LEGEND:

- Largo
- Unincorporated





Map 3 - Aerial

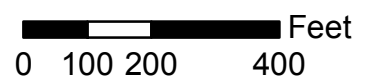
CASE #: CW16-1

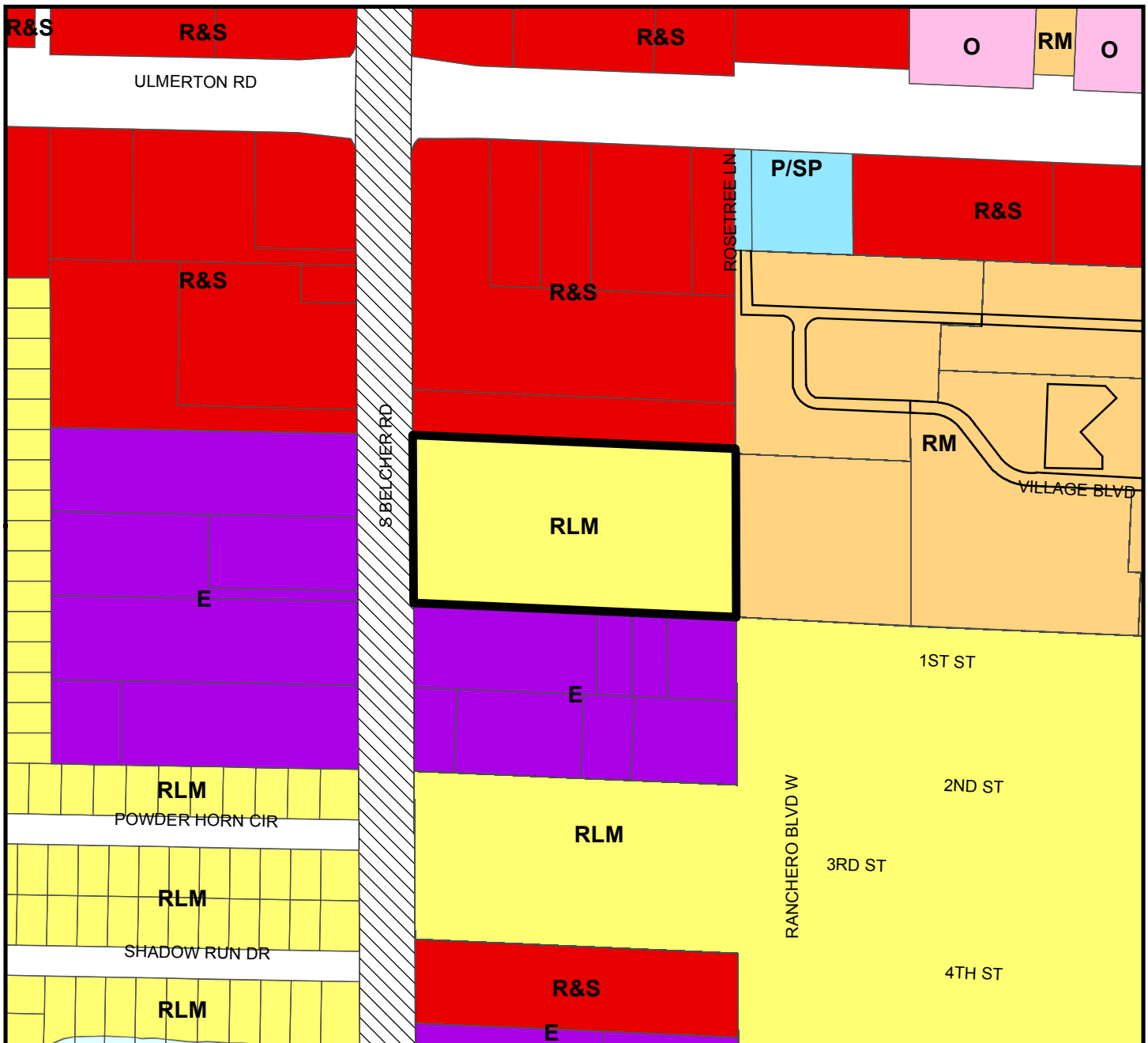
FROM: Residential Low Medium

AREA: 4.9 Acres

JURISDICTION: Pinellas County

TO: Residential Medium



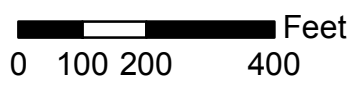


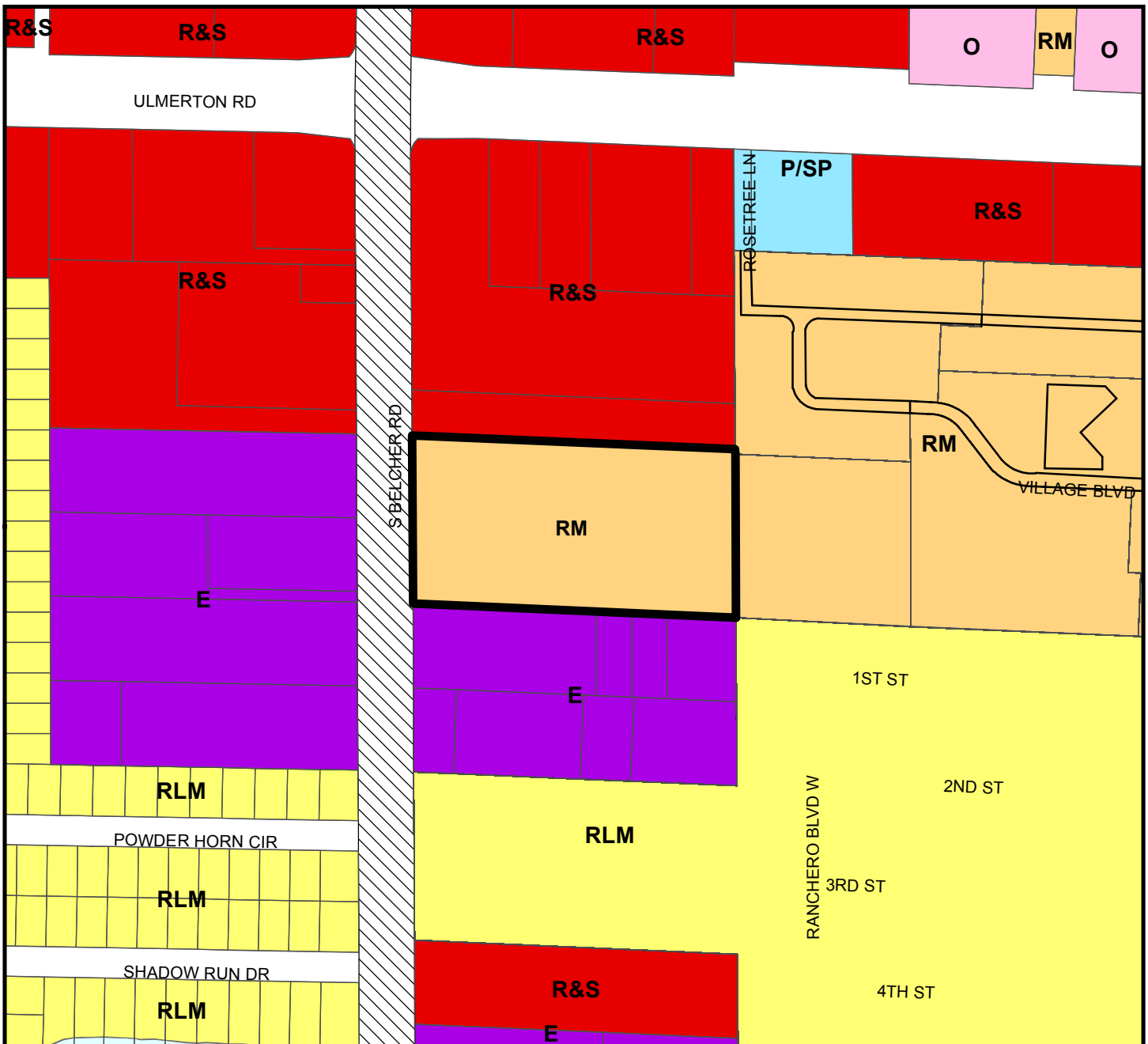
Plan Map Categories

- Residential Low Medium
- Office
- Employment
- Residential Medium
- Retail & Services
- Public/Semi-Public
- Scenic/Noncommercial Corridor

Map 4 - Current Countywide Plan Map

CASE #: CW16-1 FROM: Residential Low Medium AREA: 4.9 Acres
 JURISDICTION: Pinellas County TO: Residential Medium



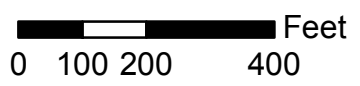


Plan Map Categories

- Residential Low Medium
- Office
- Employment
- Residential Medium
- Retail & Services
- Public/Semi-Public
- Scenic/Noncommercial Corridor

Map 5 - Proposed Countywide Plan Map

CASE #: CW16-1 FROM: Residential Low Medium AREA: 4.9 Acres
 JURISDICTION: Pinellas County TO: Residential Medium





Map 6 - Scenic/Noncommercial Corridor (SNCC)

CASE #: CW16-1

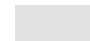
FROM: Residential Low Medium

AREA: 4.9 Acres

JURISDICTION: Pinellas County

TO: Residential Medium

SNCC TYPE:

 Enhancement Connector

