

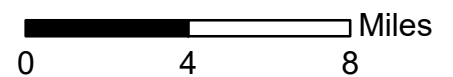


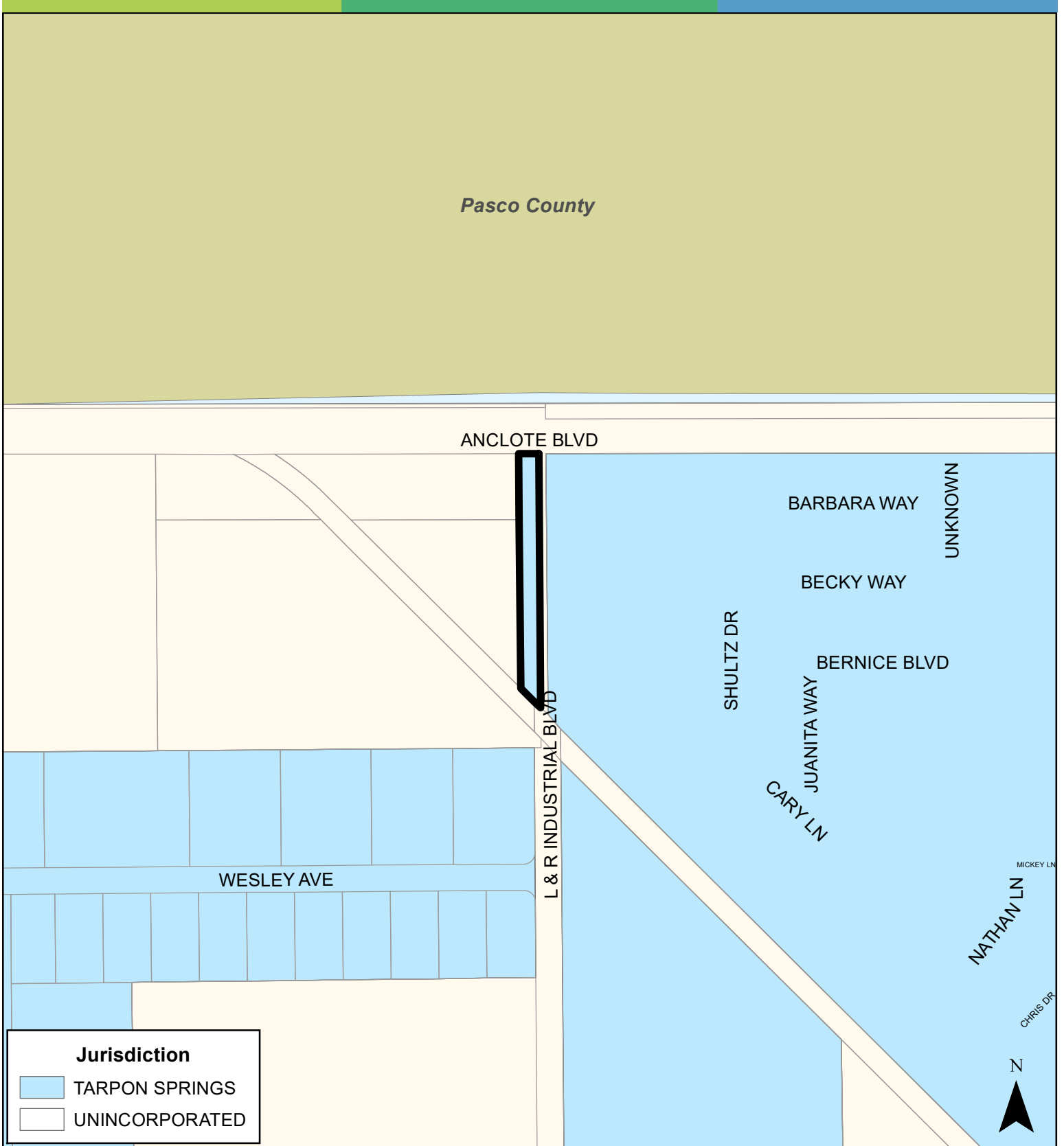
JURISDICTION: Tarpon Springs

FROM: Residential Low Medium

AREA: 0.58 Acres

TO: Public/Semi-Public





Jurisdiction

- TARPON SPRINGS
- UNINCORPORATED

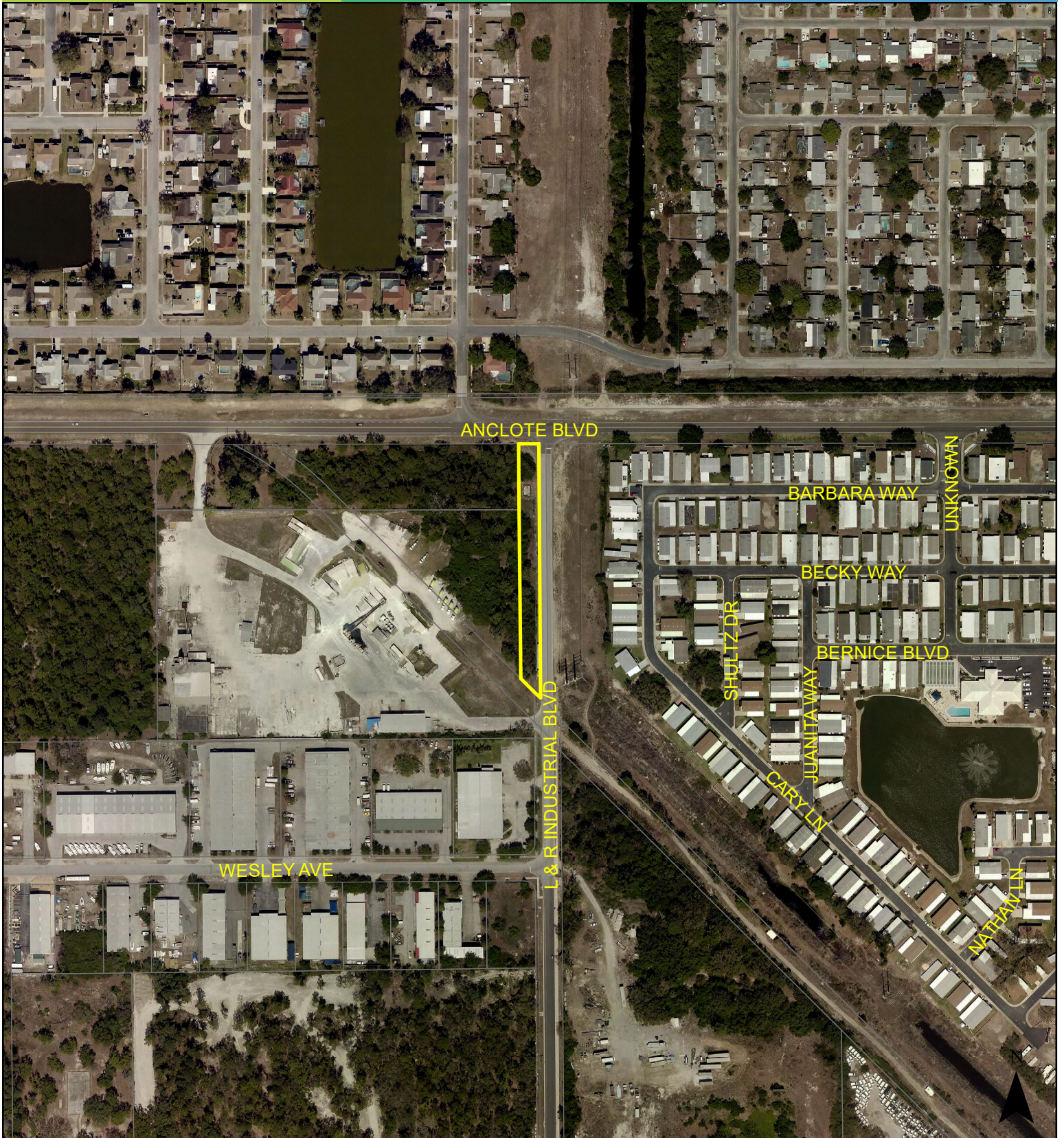
JURISDICTION: Tarpon Springs **FROM:** Residential Low Medium

AREA: 0.58 Acres **TO:** Public Semi-Public

0 250 500 Feet

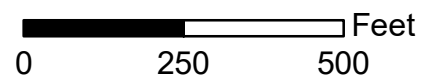
Case CW21-02

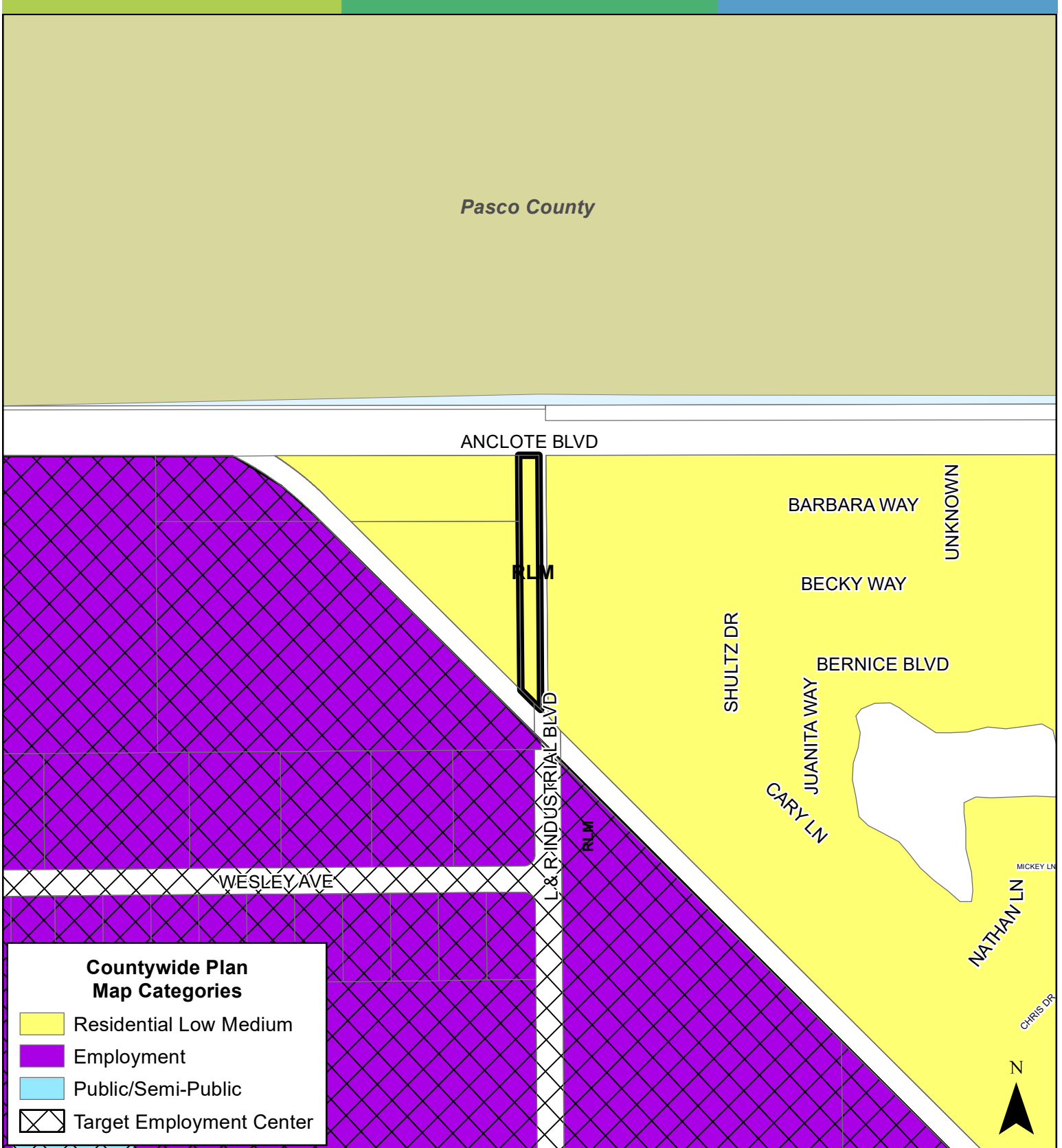
Map 3: Aerial Map



JURISDICTION: Tarpon Springs **FROM:** Residential Low Medium

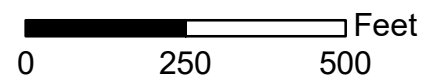
AREA: 0.58 Acres **TO:** Public/Semi-Public

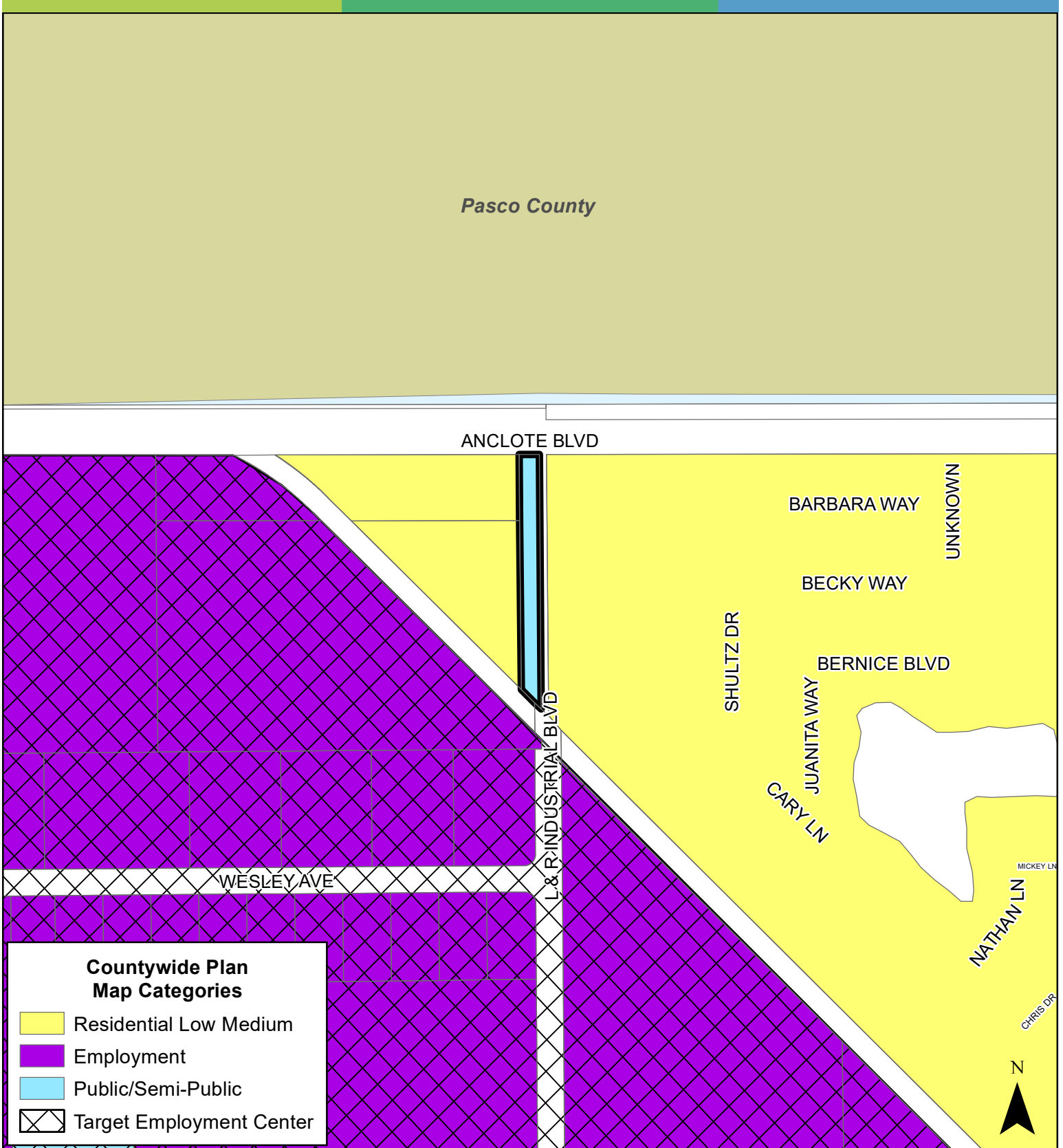




JURISDICTION: Tarpon Springs **FROM:** Residential Low Medium

AREA: 0.58 Acres **TO:** Public/Semi-Public





JURISDICTION: Tarpon Springs **FROM:** Residential Low Medium

AREA: 0.58 Acres **TO:** Public/Semi-Public

