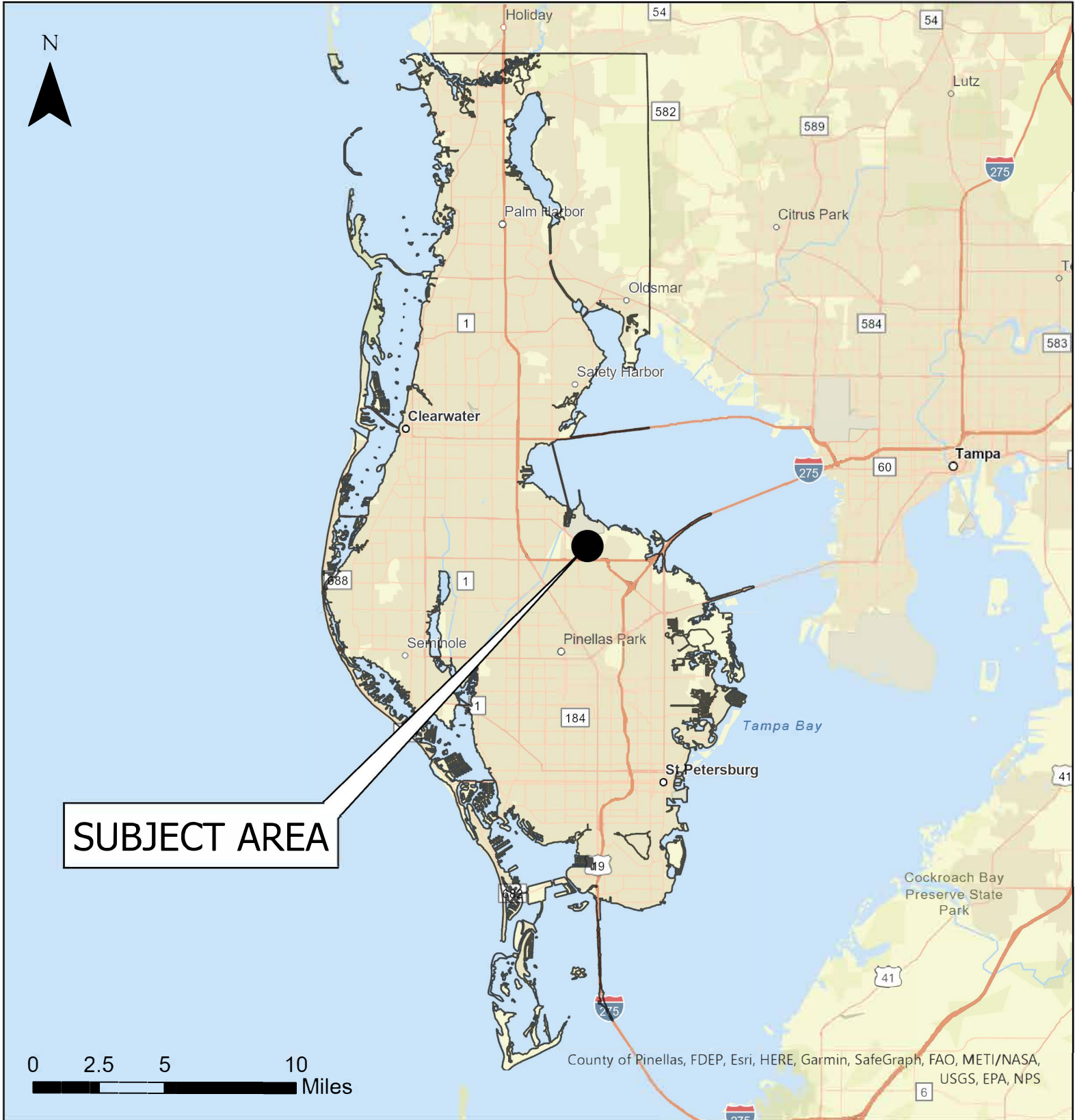


Case CW23-07

Map 1: Location Map



JURISDICTION: Pinellas County

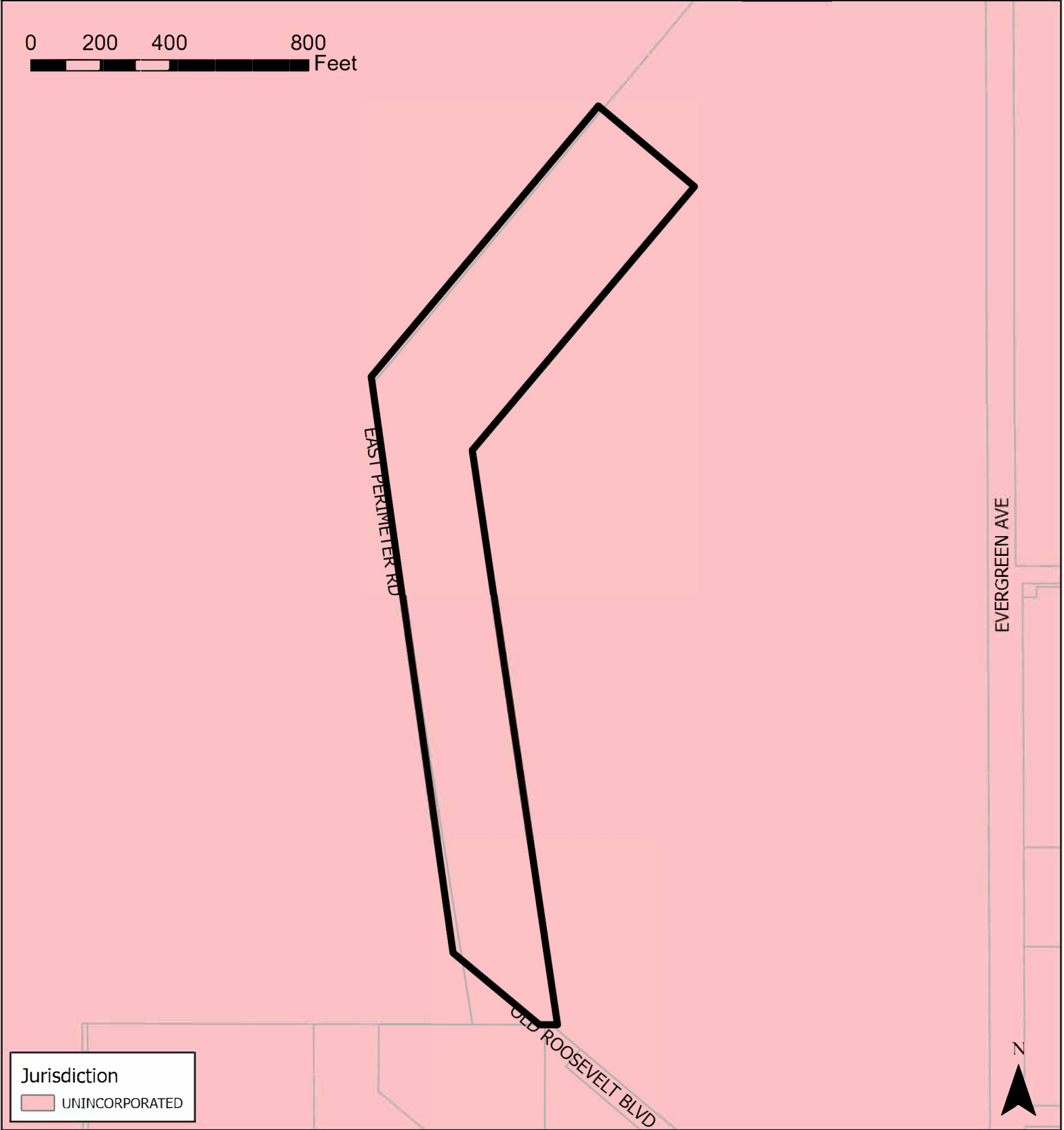
AREA: 18.5 acres m.o.l.

FROM: Employment, Target Employment Center and No Designation

TO: Public/Semi-Public and Target Employment Center

Case CW23-07

Map 2: Jurisdictional Map



JURISDICTION: Pinellas County

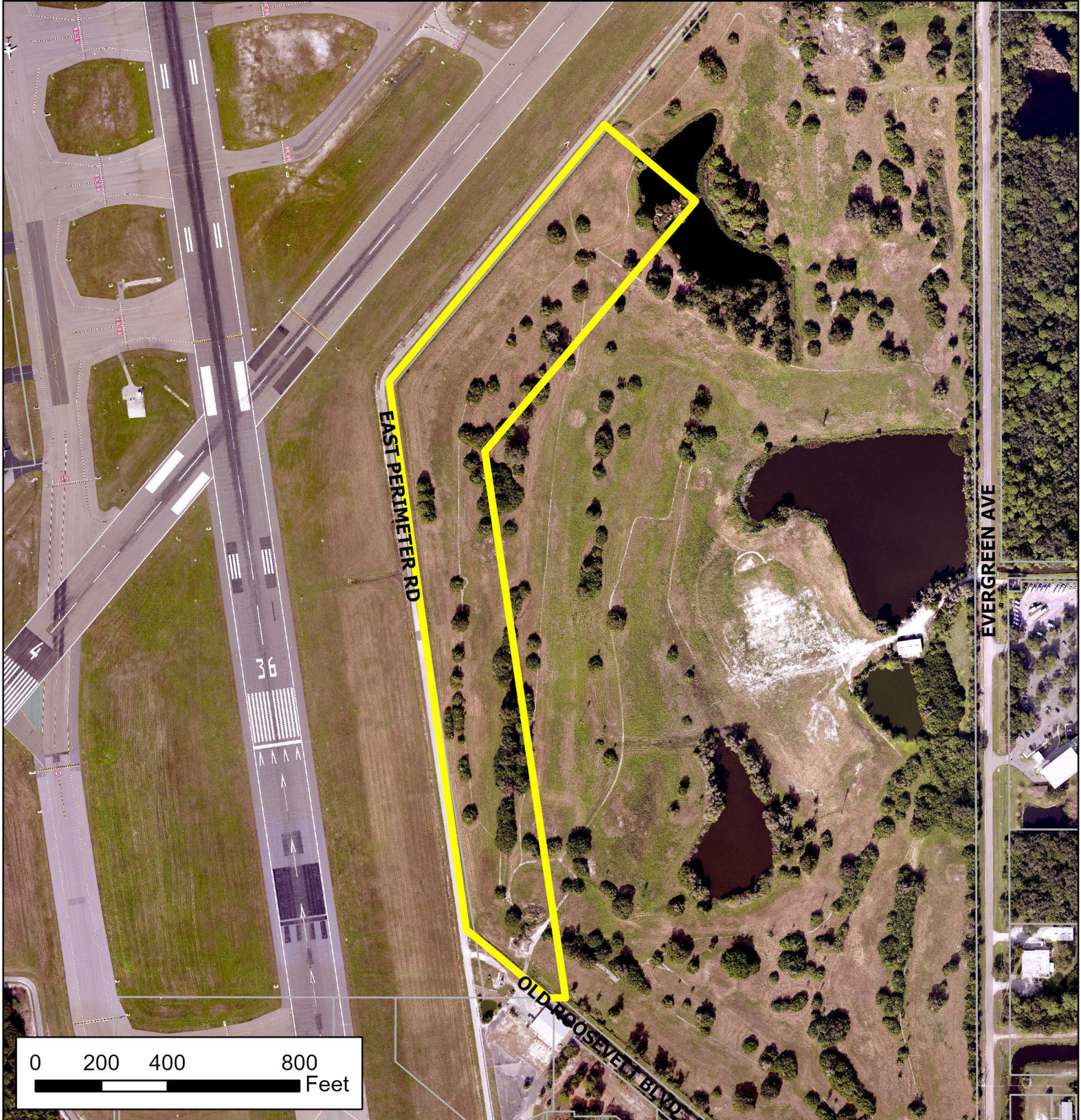
AREA: 18.5 acres m.o.l.

FROM: Employment, Target Employment Center and No Designation

TO: Public/Semi-Public and Target Employment Center

Case CW23-07

Map 3: Aerial Map



JURISDICTION: Pinellas County

AREA: 18.5 acres m.o.l.

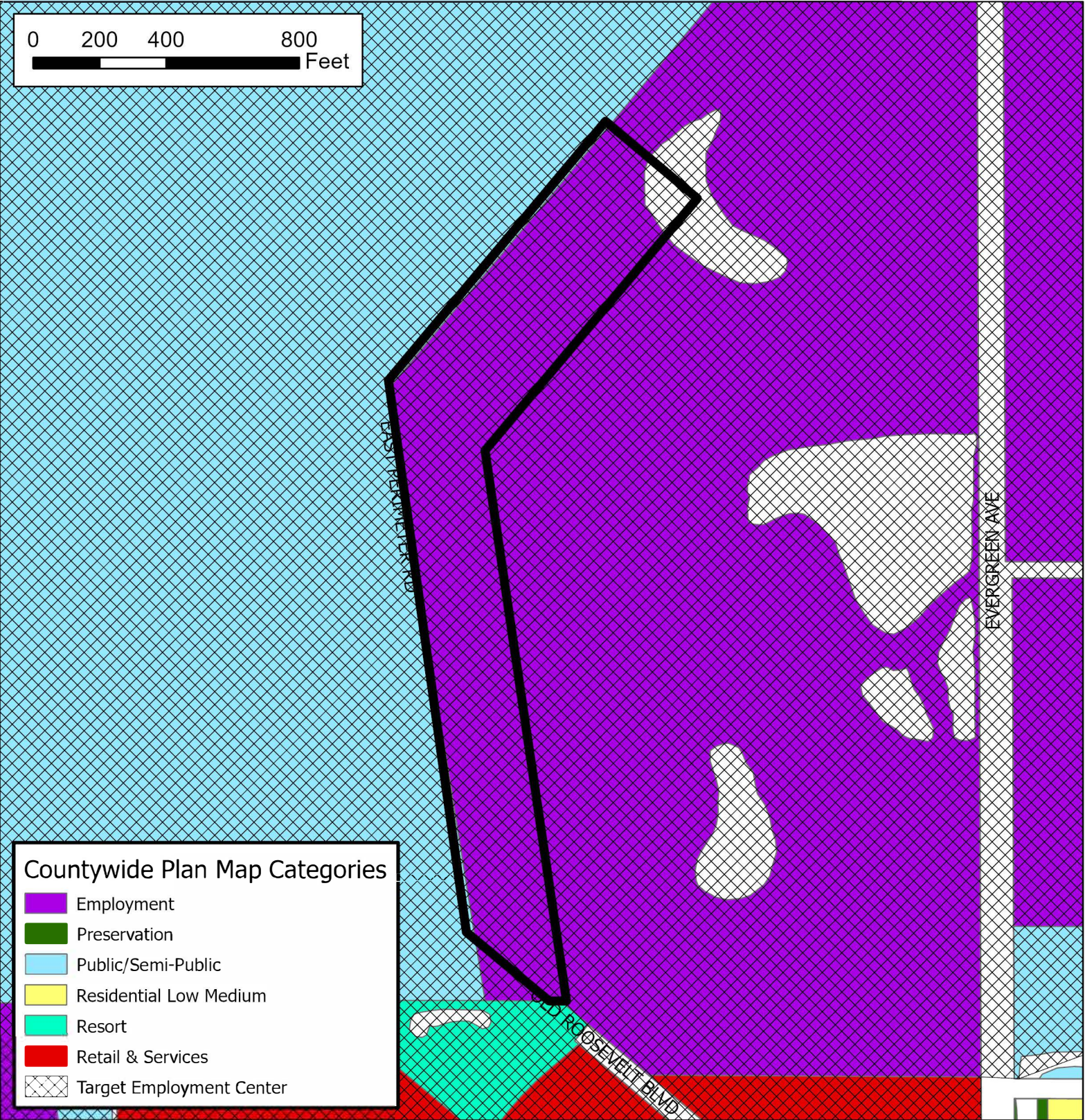
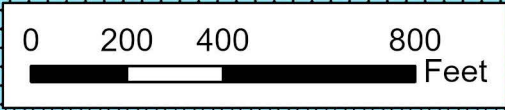
FROM: Employment, Target Employment Center and No Designation

TO: Public/Semi-Public and Target Employment Center



Case CW23-07

Map 4: Current Countywide Plan Map



Countywide Plan Map Categories

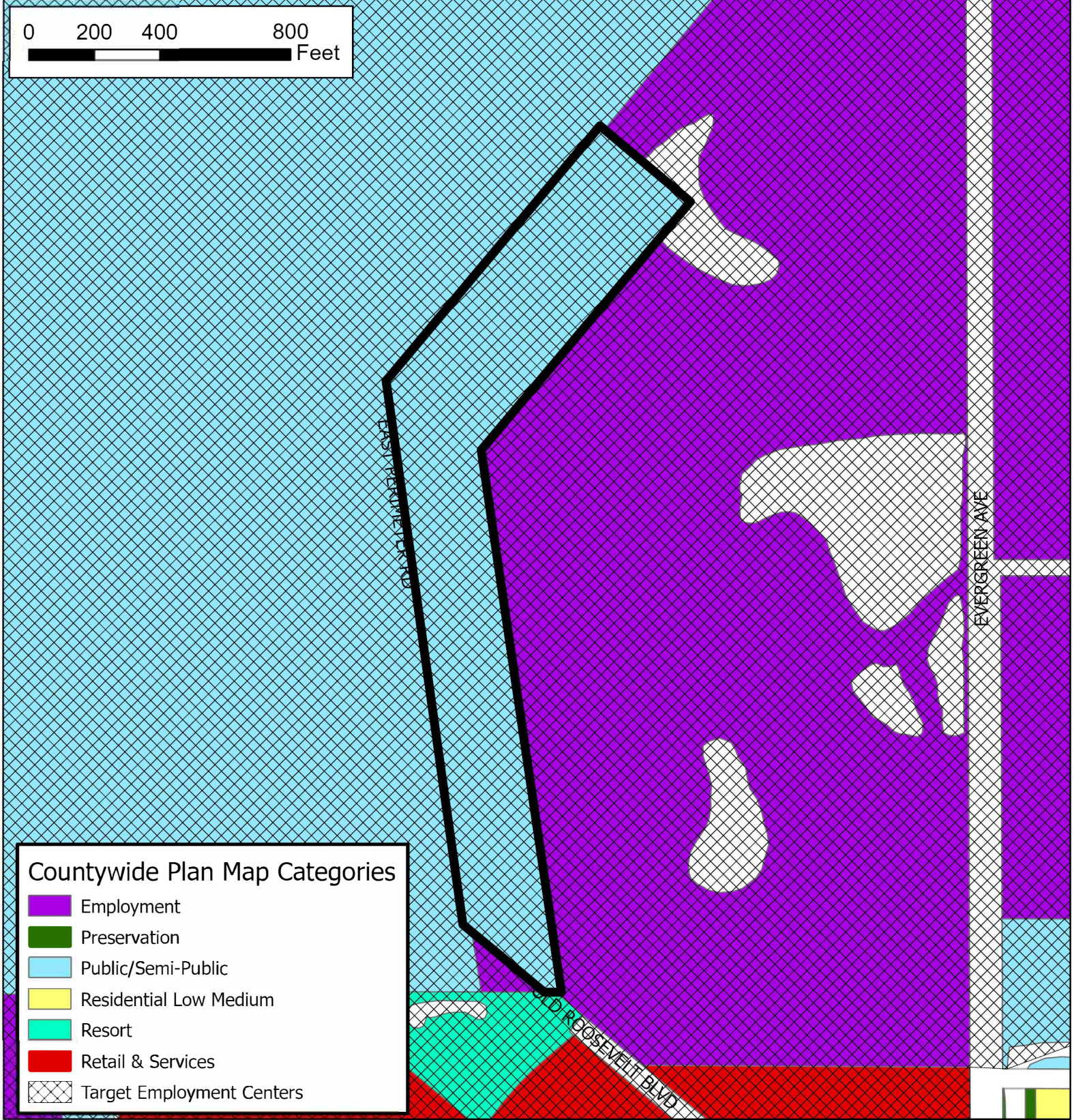
- Employment
- Preservation
- Public/Semi-Public
- Residential Low Medium
- Resort
- Retail & Services
- Target Employment Center

JURISDICTION: Pinellas County **AREA: 18.5 acres m.o.l.**

FROM: Employment, Target Employment Center and No Designation

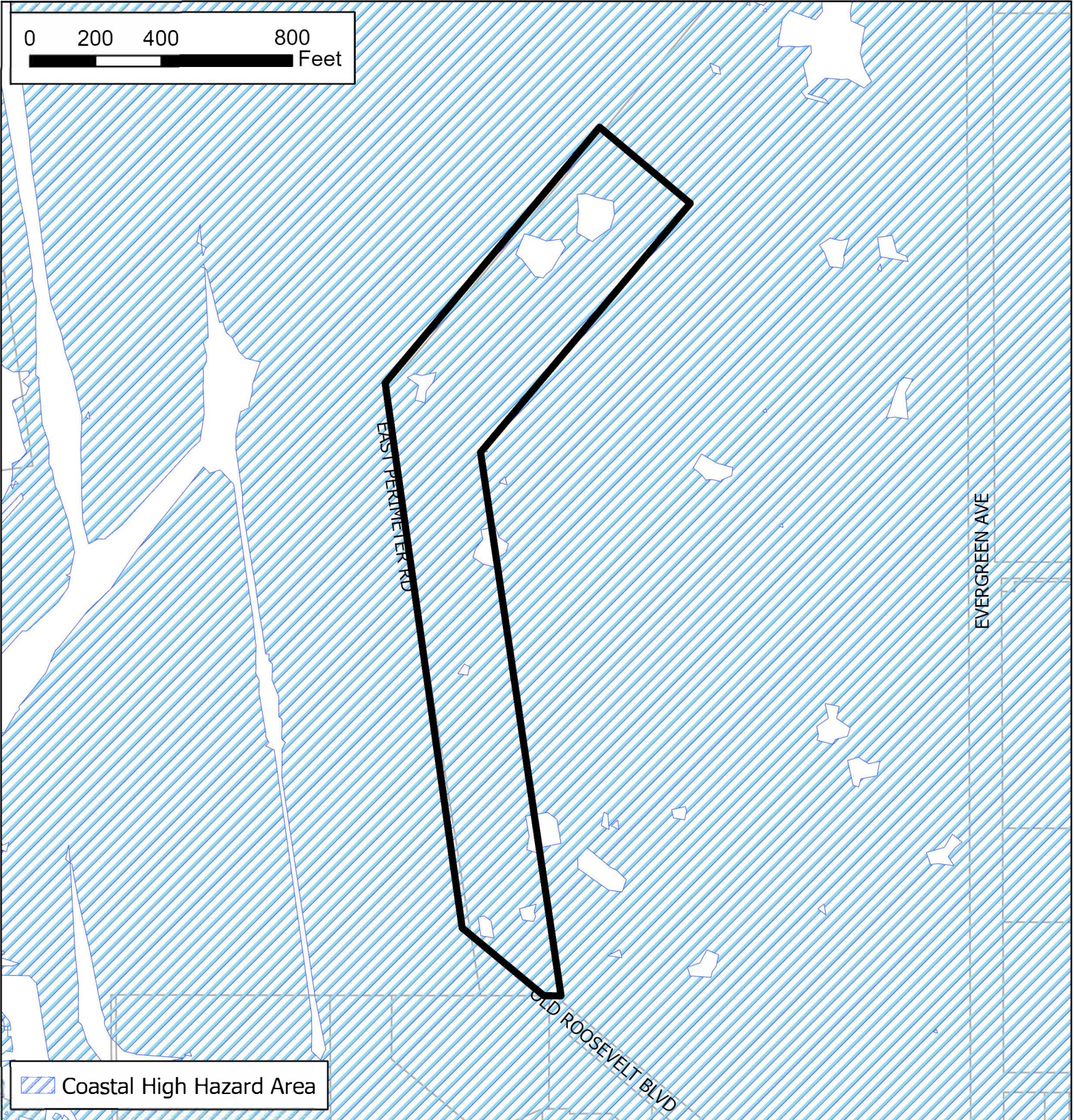
TO: Public/Semi-Public and Target Employment Center





Case CW23-07

Map 6: Coastal High Hazard Area



JURISDICTION: Pinellas County

AREA: 18.5 acres m.o.l.

FROM: Employment, Target Employment Center and No Designation

TO: Public/Semi-Public and Target Employment Center

