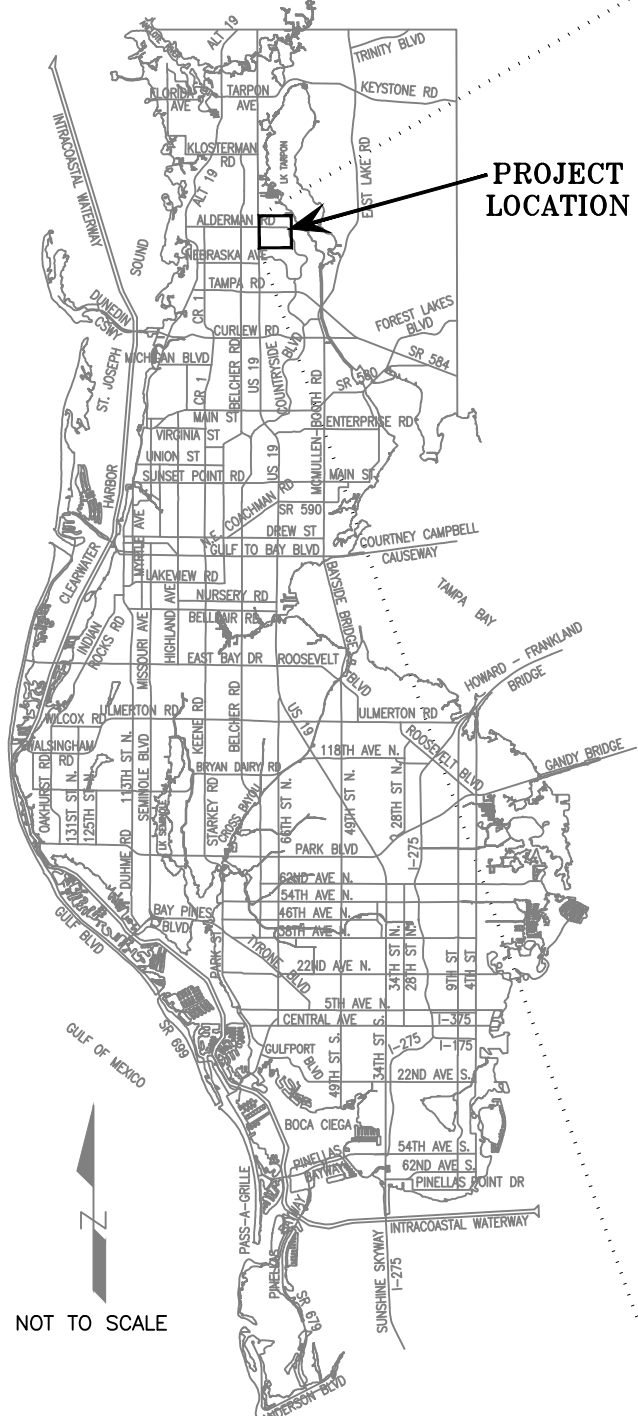


PINELLAS COUNTY MAP



PROJECT LOCATION

NOT TO SCALE

SECTION(S) 31, TOWNSHIP 27 SOUTH, RANGE 16 EAST

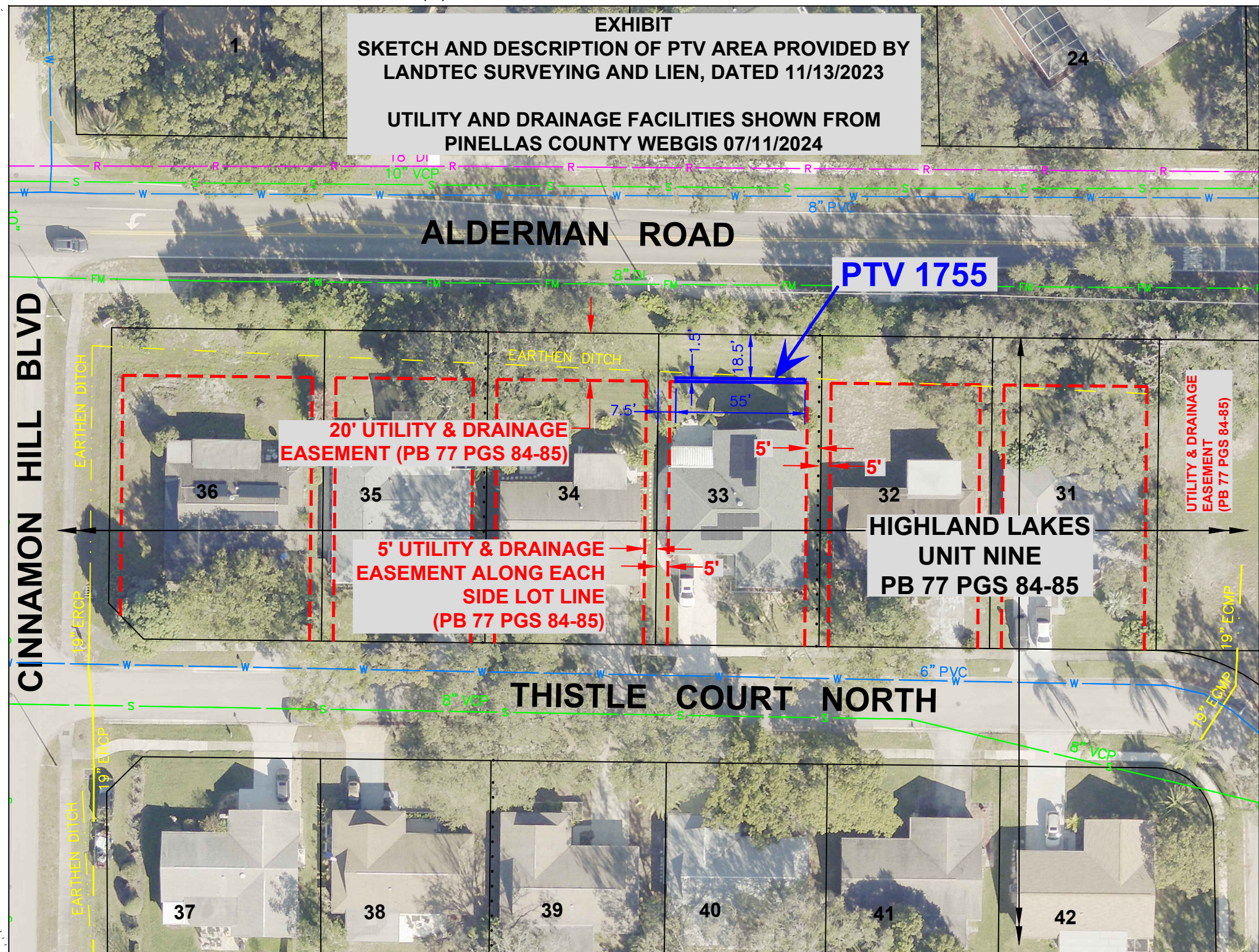


EXHIBIT
SKETCH AND DESCRIPTION OF PTV AREA PROVIDED BY
LANDTEC SURVEYING AND LIEN, DATED 11/13/2023
UTILITY AND DRAINAGE FACILITIES SHOWN FROM
PINELLAS COUNTY WEBGIS 07/11/2024

PTV 1755

20' UTILITY & DRAINAGE EASEMENT (PB 77 PGS 84-85)

5' UTILITY & DRAINAGE EASEMENT ALONG EACH SIDE LOT LINE (PB 77 PGS 84-85)

HIGHLAND LAKES UNIT NINE PB 77 PGS 84-85

UTILITY & DRAINAGE EASEMENT (PB 77 PGS 84-85)

SCALE IN FEET 1" = 50'

S:\Divisions\Survey\VACATION_SF_N 0501\Case_1755\Dwg_00501_01755_Final_Exhibit.dwg, Jul 11, 2024 - 8:47am

SURVEY SECTION	BY	DATE
SURVEYED	.	.
TECHNICIAN	AZ	07/24
CHECKED	.	.
SURVEY BOOK NO(S): .		

PINELLAS COUNTY, FLORIDA
 PUBLIC WORKS
 SURVEY AND MAPPING DIVISION
 22211 U.S. HWY, 19 NORTH
 CLEARWATER, FLORIDA 33765-2328
 PHONE (727) 464-8904



PTV 1755
 ACCELA: PTV-24-00001
 COVINI
 2848 THISTLE COURT N

EXHIBIT	DATE: 07/11/2024
NOT A SURVEY	PHOTOGRAPHY DATE: 01/23
PID: 001851B	SURVEY FILE NO.: 0501_01755
00501_01755_Final_Exhibit.dwg	SHEET: 01 of 01