

RESOLUTION NO. 20-3

RESOLUTION DEDICATING A PORTION OF COUNTY OWNED PROPERTY, BEING THE SOUTH 17 FOOT FEET OF LOT 9, BLOCK I, DIXIE PARK-UNIT 1, RECORDED IN PLAT BOOK 15, PAGE 27 AND LYING IN SECTION 24, TOWNSHIP 27 SOUTH, RANGE 15 EAST AS PUBLIC ROAD RIGHT-OF-WAY FOR KLOSTERMAN ROAD.

WHEREAS, Pinellas County (County) holds title in fee simple to Lot 9, Block I, Dixie Park Unit 1, recorded in Plat Book 15, Page 27, of Public Records of Pinellas County Florida per Official Records Book 10969, Page 1732, Public Records of Pinellas County Florida, lying within the North ½ of Section 24, Township 27 South, Range 15 East;

and

WHEREAS, the County is selling a portion of Lot 9, Block I, Dixie Park Unit 1;

and

WHEREAS, the parcel as described in "EXHIBIT A", attached hereto has been improved by the County, including roadway and/or drainage improvements and is needed for public right-of-way;

and

WHEREAS, it is necessary for the County to dedicate this parcel as described in "EXHIBIT A" as public right-of-way; and

NOW THEREFORE, BE IT RESOLVED, by the Board of County Commissioners of Pinellas County, Florida, duly assembled this 14th day of January, 2020, hereby dedicates as public right-of-way this parcel located on Klosterman Road (P100), as depicted in Exhibit A, attached hereto, and authorizes the Clerk of the Circuit Court to certify and record this dedication of public right-of-way.

Commissioner Welch offered the foregoing resolution and moved its adoption which was seconded by Commissioner Seel, and upon roll call the vote was:

AYES: Gerard, Eggers, Justice, Long, Peters, Seel, and Welch

NAYS: None

ABSENT OR NOT VOTING: None

KEN BURKE, CLERK OF COURT
AND COMPTROLLER PINELLAS COUNTY, FL
INST# 2020017902 01/16/2020 09:11 AM
OFF REC BK: 20847 PG: 2634-2635
DocType:GOV

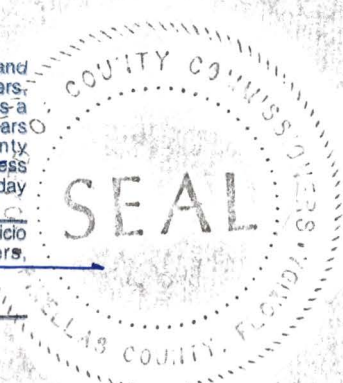
APPROVED AS TO FORM

By: Joseph A. Monissey
Office of the County Attorney

I, KENNETH P. BURKE, Clerk of the Circuit Court and Clerk Ex-Officio, Board of County Commissioners, do hereby certify that the above and foregoing is a true and correct copy of the original as it appears in the official files of the Board of County Commissioners of Pinellas County, Florida. Witness my hand and seal of said County FL this 15 day of February, A.D. 2020.

KENNETH P. BURKE, Clerk of the Circuit Court Ex-Officio Clerk of the Board of County Commissioners, Pinellas County, Florida.

By *James J. [Signature]*
Deputy Clerk



PINELLAS COUNTY
 PUBLIC WORKS
 SURVEY AND MAPPING DIVISION
 22211 U.S. HIGHWAY 19 N.
 CLEARWATER, FLORIDA 33765-2328



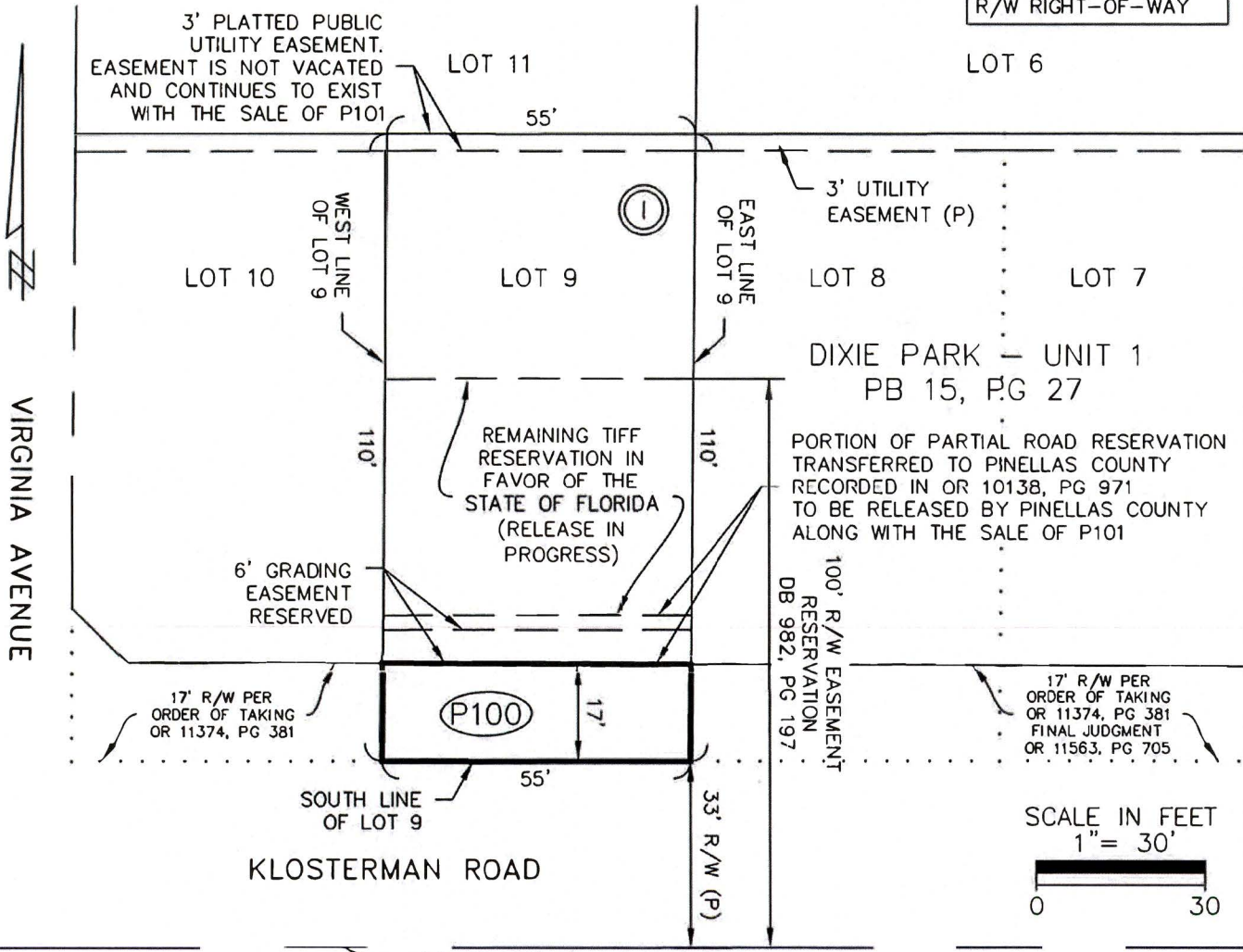
SECTION 24, TOWNSHIP 27 SOUTH, RANGE 15 EAST
 DESCRIPTION

The South 17.00 feet of Lot 9, Block I, Dixie Park, Unit 1, according to the plat thereof as recorded in Plat Book 15, Page 27, of the Public Records of Pinellas County, Florida.

Said parcel containing 935 square feet or 0.021 acres more or less.

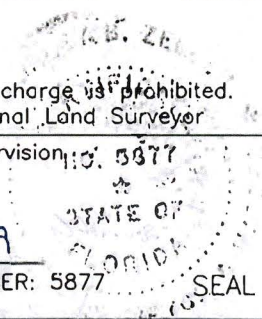
LEGEND	
OR	OFFICIAL RECORDS
PG	PAGE
(P)	PLAT
R/W	RIGHT-OF-WAY

SKETCH - NOT A SURVEY



ADDITIONS OR DELETIONS BY OTHER THAN THE PROFESSIONAL LAND SURVEYOR IN RESPONSIBLE CHARGE IS PROHIBITED.
 LAND DESCRIPTION IS INVALID WITHOUT SIGNATURE AND EMBOSSED SEAL OF THE PROFESSIONAL LAND SURVEYOR

CALCULATED BY: RAC	The above Sketch and/or Land description was prepared under my supervision and is true and correct to the best of my knowledge and belief.
CHECKED BY:	
S.F.N.:	By: Pinellas County Survey and Mapping Division
1332_00485	DATE <u>November 18, 2019</u>
	SHIRLEY B. ZELLER, PROFESSIONAL SURVEYOR AND MAPPER LICENSE NUMBER: 5877 STATE OF FLORIDA, PHONE # (727) 464-8904



I, KENNETH P. BURKE, Clerk of the Circuit Court and Clerk Ex-Officio, Board of County Commissioners, do hereby certify that the above and foregoing is a true and correct copy of the original as it appears in the official files of the Board of County Commissioners of Pinellas County, Florida. Witness my hand and seal of said County on this 20 day of November, 2020.

By [Signature]
Deputy Clerk

