

Z-17-10-19

Location Map

Zoning

From: R-A, Residential Agriculture & R-R, Rural Residential

To: LI, Limited Institutional

07/28/16/00000/220/1020, 0900 & 1100

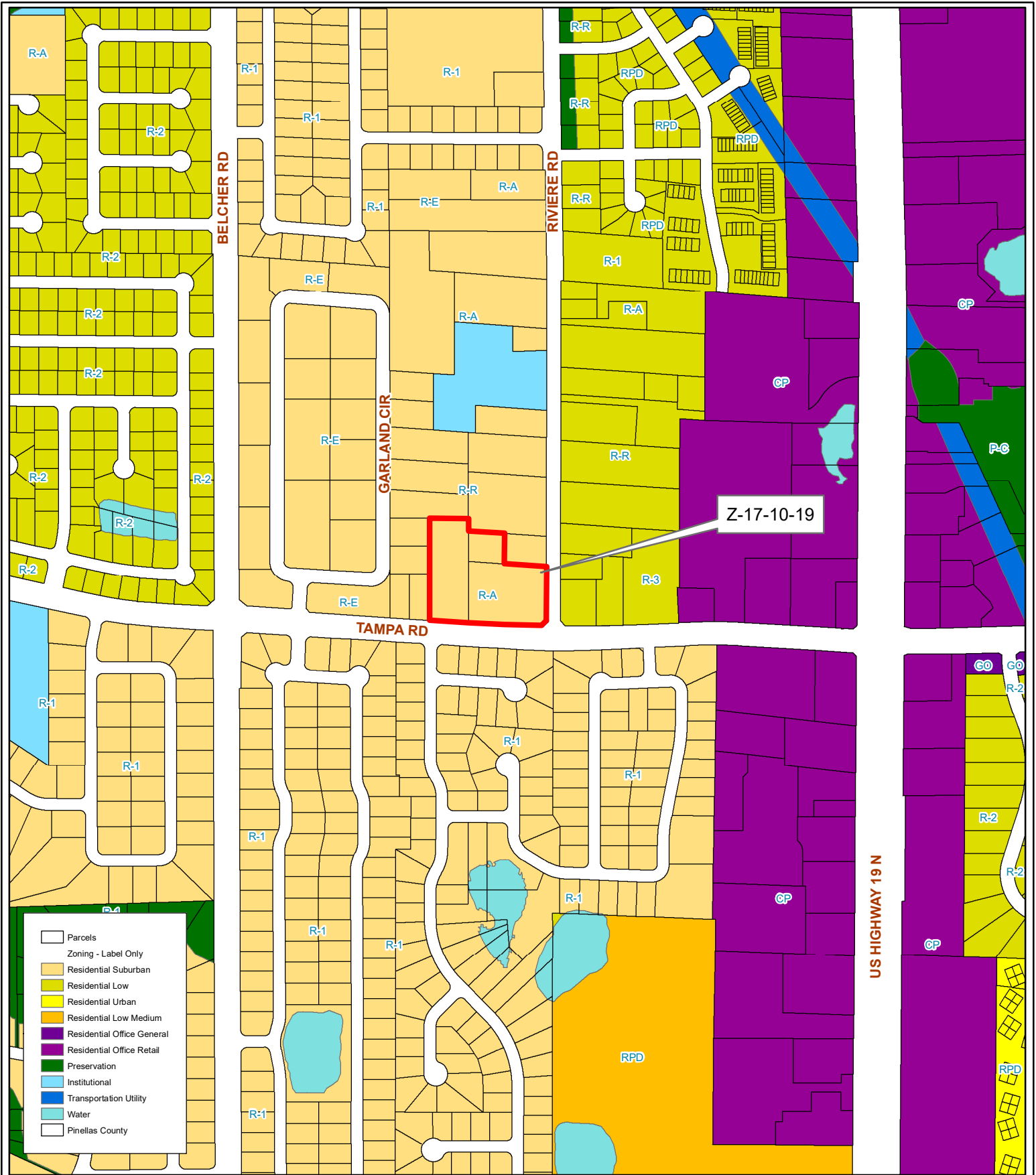
Prepared by: Pinellas County Planning Department



Date: 08/27/2019



1 inch = 4.5 miles



Z-17-10-19

Current Zoning

Zoning

From: R-A, Residential Agriculture & R-R, Rural Residential

To: LI, Limited Institutional

07/28/16/00000/220/1020, 0900 & 1100

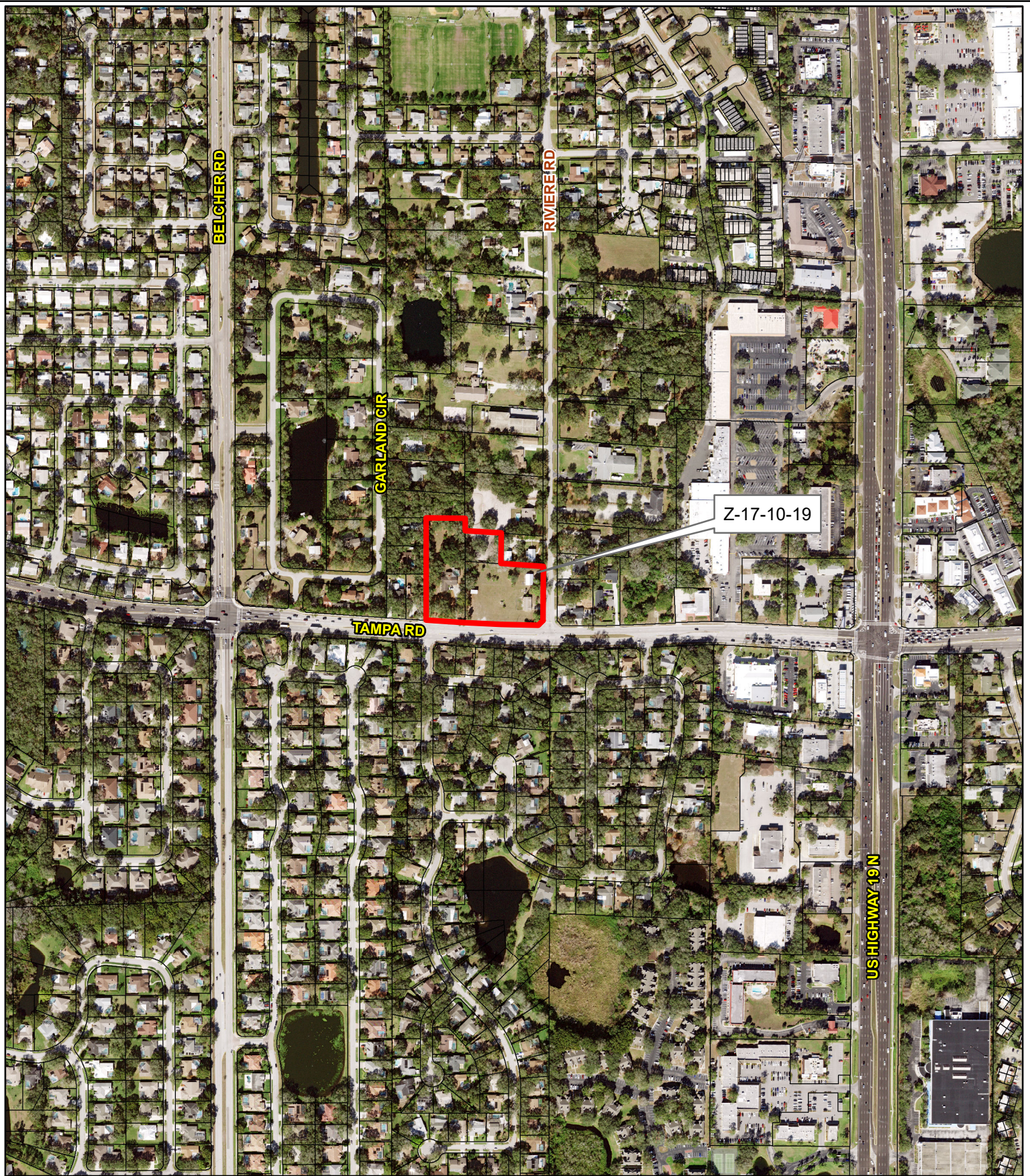
Prepared by: Pinellas County Planning Department



Date: 08/27/2019



1 inch = 0.1 miles



Z-17-10-19

Aerial Map

Zoning

From: R-A, Residential Agriculture & R-R, Rural Residential

To: LI, Limited Institutional

07/28/16/00000/220/1020, 0900 & 1100

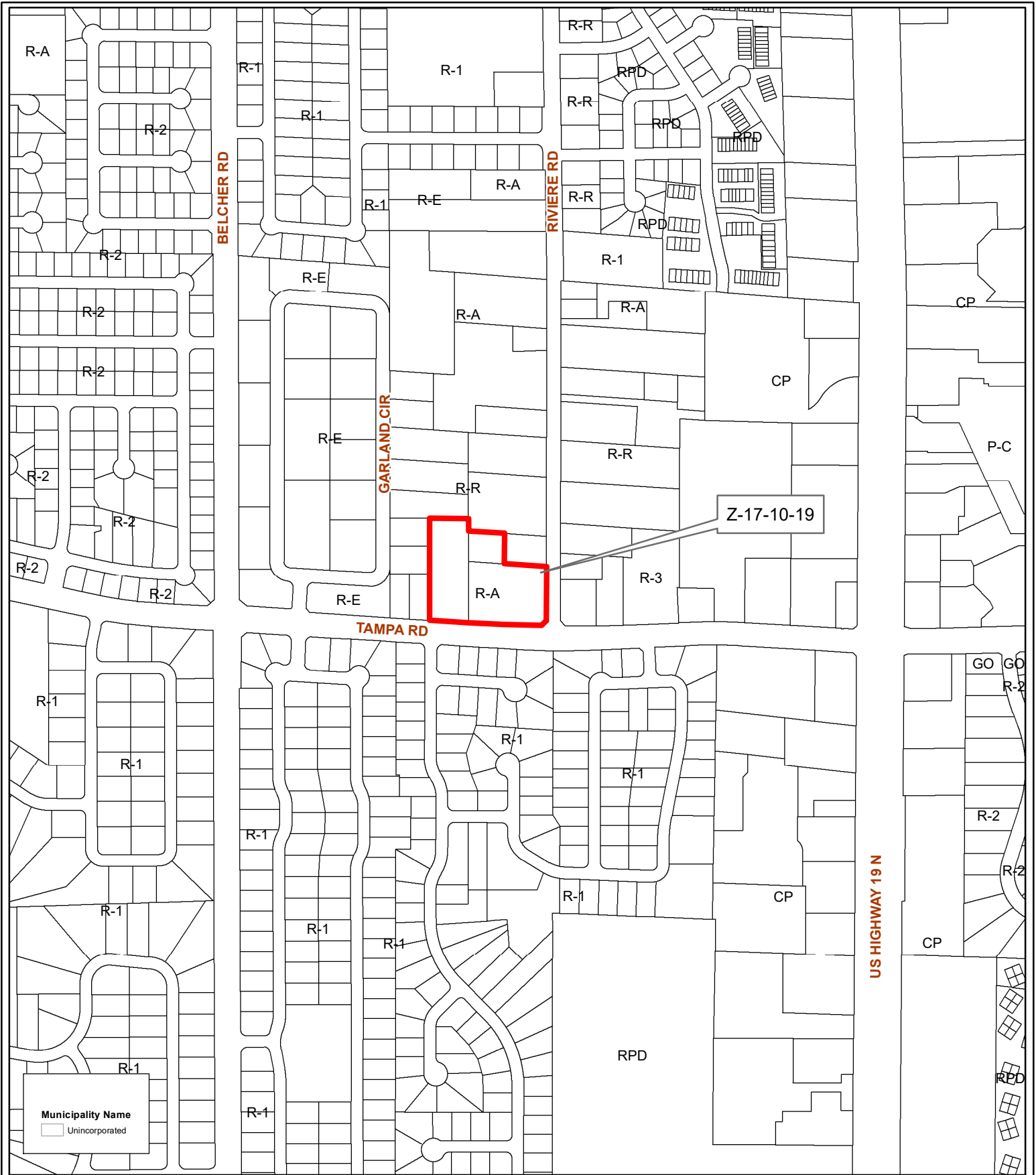
Prepared by: Pinellas County Planning Department



Date: 08/27/2019



1 inch = 0.1 miles



Z-17-10-19

Municipal Map

Zoning

From: R-A, Residential Agriculture & R-R, Rural Residential

To: LI, Limited Institutional

07/28/16/00000/220/1020, 0900 & 1100

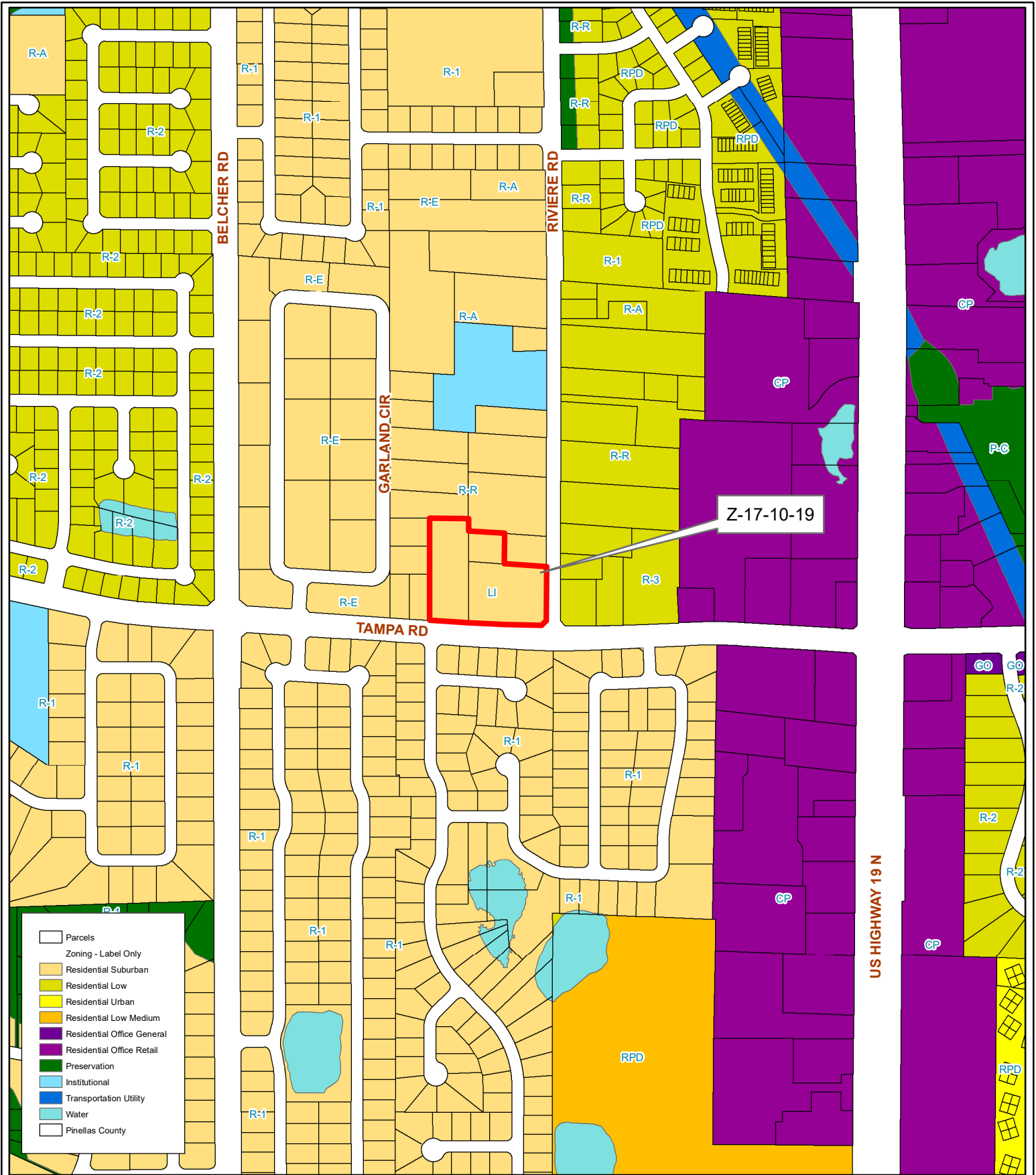
Prepared by: Pinellas County Planning Department



Date: 08/27/2019



1 inch = 0.1 miles



- Parcels
- Zoning - Label Only
- Residential Suburban
- Residential Low
- Residential Urban
- Residential Low Medium
- Residential Office General
- Residential Office Retail
- Preservation
- Institutional
- Transportation Utility
- Water
- Pinellas County

Z-17-10-19
Proposed Zoning

Zoning **From:** R-A, Residential Agriculture & R-R, Rural Residential
To: LI, Limited Institutional



07/28/16/00000/220/1020, 0900 & 1100

Prepared by: Pinellas County Planning Department



Date: 09/06/2019

1 inch = 0.1 miles