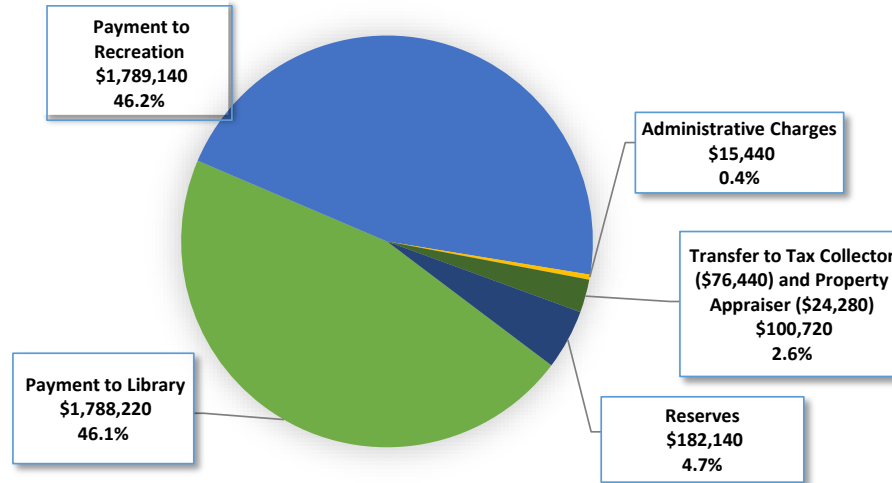
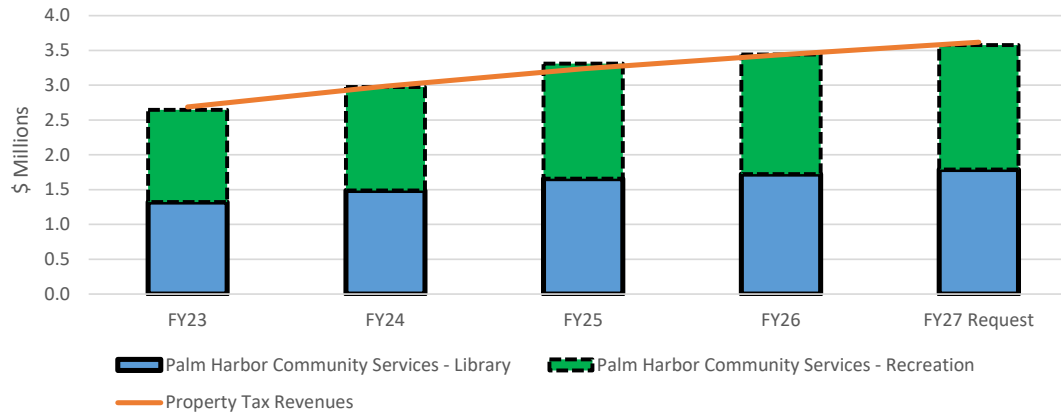


# PALM HARBOR COMMUNITY SERVICES DISTRICT

## FY27 Budget Request



## Palm Harbor Community Services District Budget History



The Palm Harbor Community Services District is a special taxing district within unincorporated Pinellas County. This special taxing district, formed by the residents of Palm Harbor, was established for the purpose of providing library and recreation facilities and services to the residents of Palm Harbor. These facilities and services are funded by ad valorem taxes. Property owners within this district are levied a separate millage of 0.5 mills for this purpose, generating \$3,618,379 in estimated tax revenue for FY27. The maximum millage rate that can be levied is 0.5 mills. The millage rate has been 0.5 mills since FY13.

Note: Administrative Charges include Interest expenses and Cost Allocation charges.

**Department: Palm Harbor Community Services District**

**FOSTER CONTINUAL GROWTH & VITALITY:**

**Support a vibrant community with recreation, arts, and culture to attract residents and visitors.**

<b>Program</b>	<b>Description</b>	<b>FY27 Total Program Allocation (\$)</b>	<b>FTE Count *</b>
<b>Library Operating</b>	Library Services to residents of the Palm Harbor unincorporated community. Amount not to exceed ad valorem revenues collected.	<b>\$1,788,220</b>	<b>22.8</b>
<b>Recreation Operating</b>	Recreation Services to residents of the Palm Harbor unincorporated community. Amount not to exceed ad valorem revenues collected.	<b>\$1,789,140</b>	<b>17.0</b>
<b>SUBTOTAL - PROGRAMS:</b>		<b>\$3,577,360</b>	<b>39.8</b>
<b>Administrative charges</b>	Tax Collector (\$76,440) and Property Appraiser Commissions (\$24,280), Full Cost Allocation (\$13,840), and Interest Expense (\$800).	<b>\$116,160</b>	
<b>SUBTOTAL - EXPENDITURES:</b>		<b>\$3,693,520</b>	
<b>Reserves</b>	Reserves	<b>\$182,140</b>	
<b>GRAND TOTALS:</b>		<b>\$3,875,660</b>	<b>39.8</b>

NOTE: This budget is supported by a separate property tax levy for the Palm Harbor Community Services District.

**\* FTE are not County employees**

Library - 17 full-time & 8 part-time positions proposed for FY27.

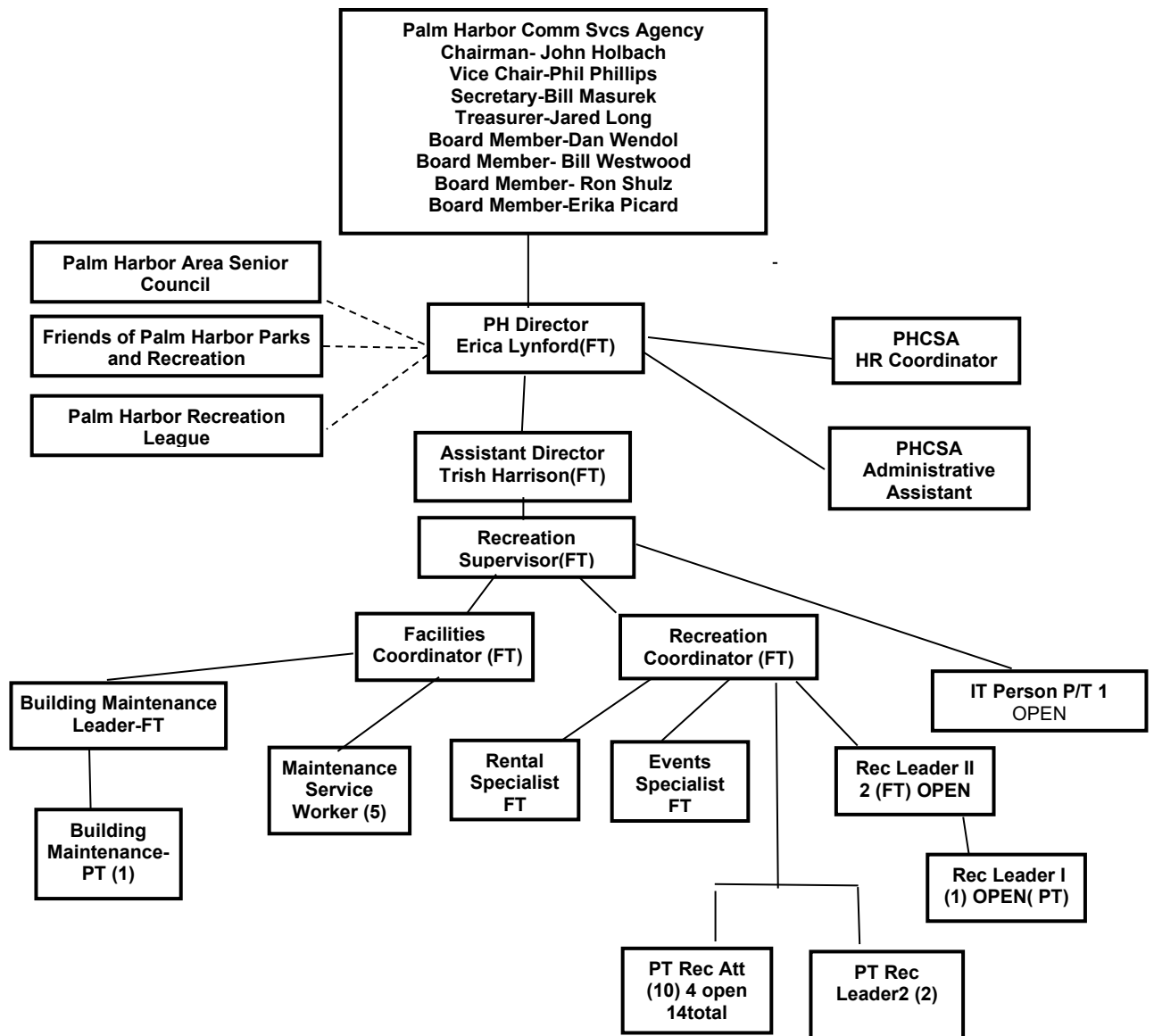
Recreation - 12 full-time & 10 part-time positions proposed for FY27.



# PALM HARBOR

## PARKS & RECREATION

### ORGANIZATIONAL CHART 2026



# Palm Harbor Library Organizational Chart

Last updated March 13, 2026

[PalmHarborLibrary.org/Contact-Us](http://PalmHarborLibrary.org/Contact-Us)

