

Case CW20-18

Map 1: Location Map

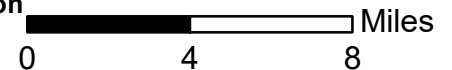


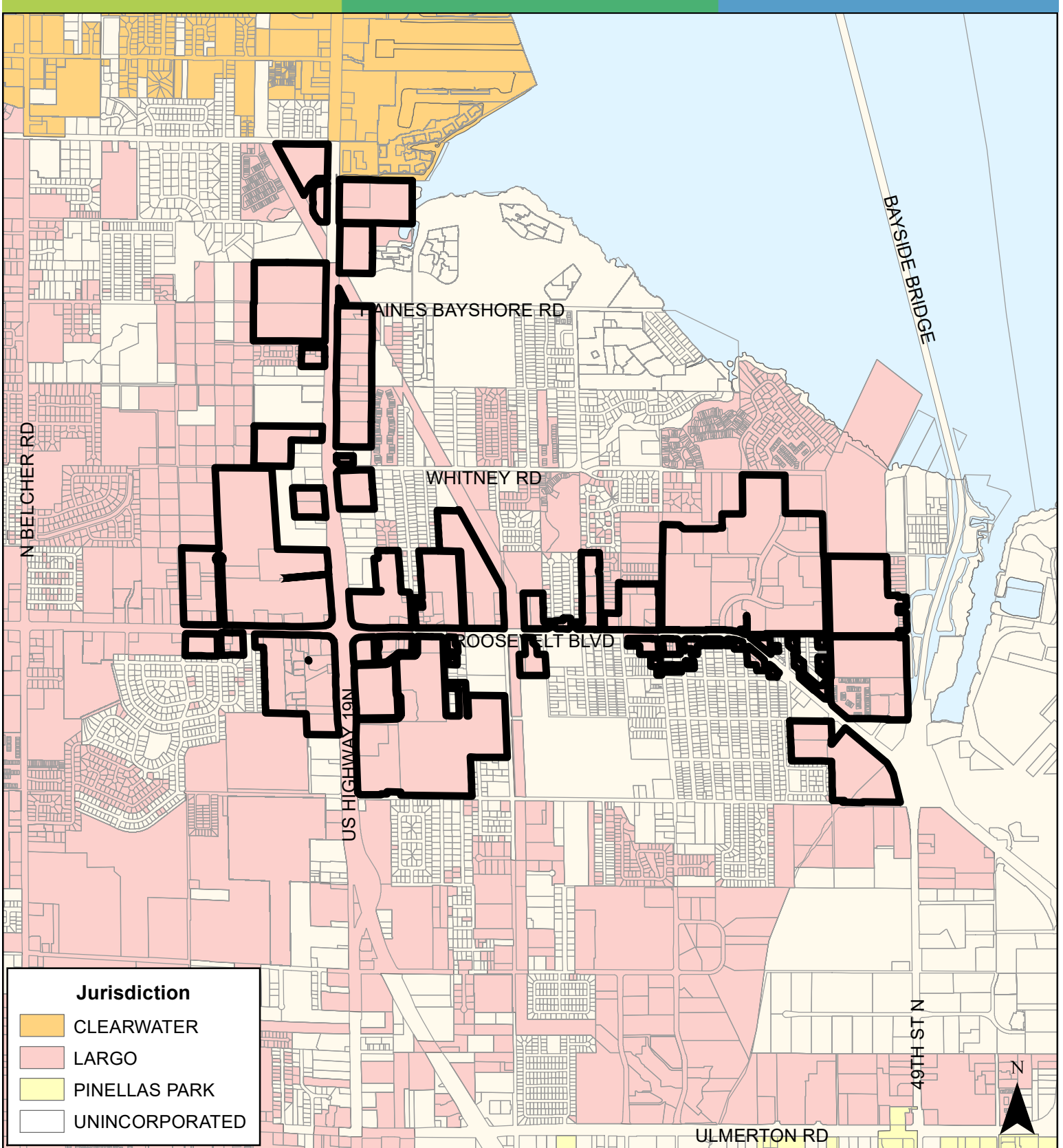
JURISDICTION: Largo

AREA: 736.2 Acres

FROM: Retail & Services, Employment, Office, Public/Semi-Public, Residential Medium, Residential Low Medium, Recreation/Open Space and Preservation

TO: Multimodal Corridor and Activity Center



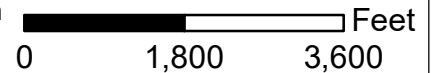


JURISDICTION: LARGO

AREA: 736.2 Acres

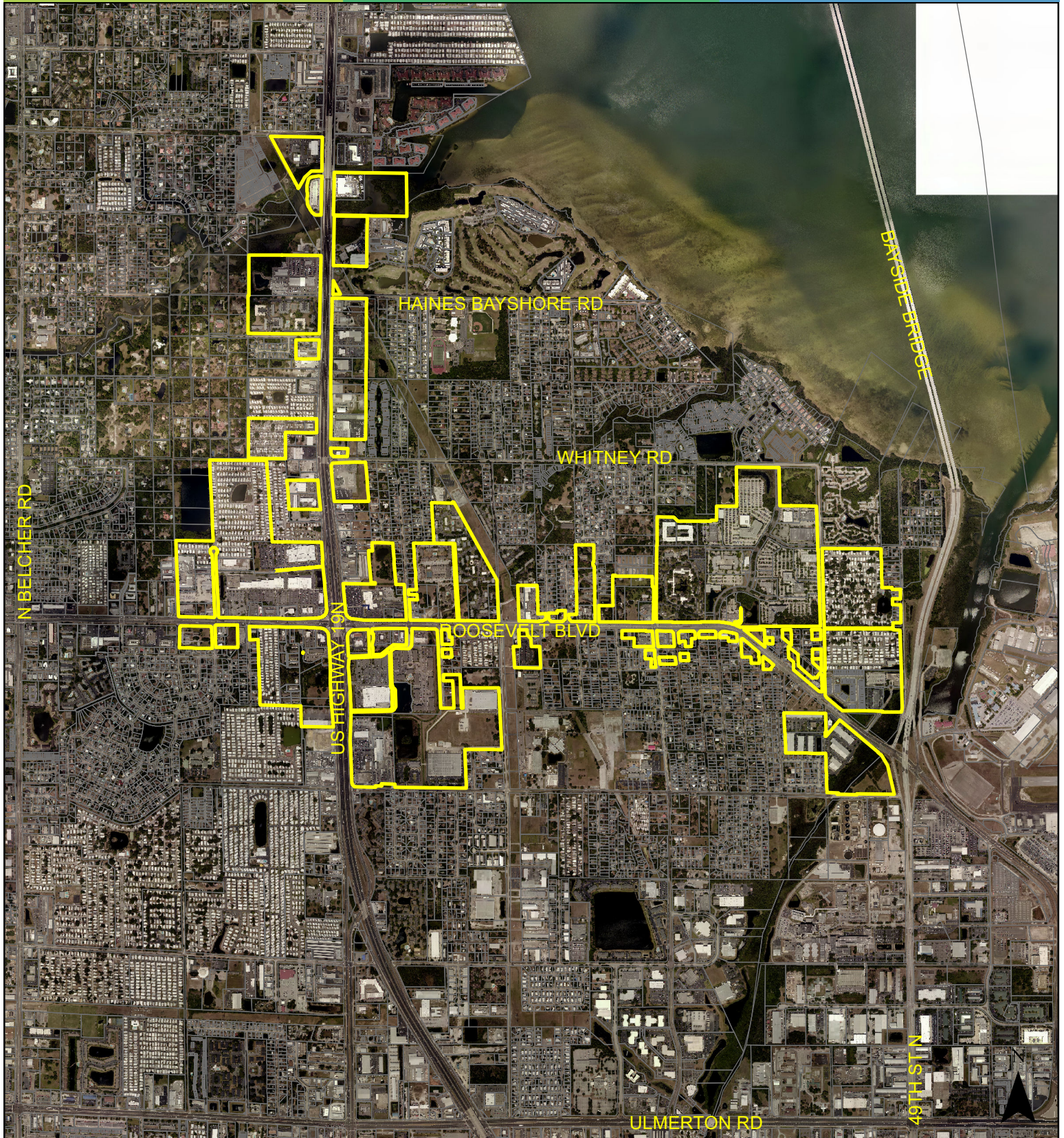
FROM: Retail & Services, Employment, Office, Public/Semi-Public, Residential Medium, Residential Low Medium, Recreation/Open Space and Preservation

TO: Multimodal Corridor and Activity Center



Case CW20-18

Map 3: Aerial Map

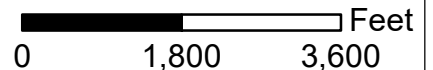


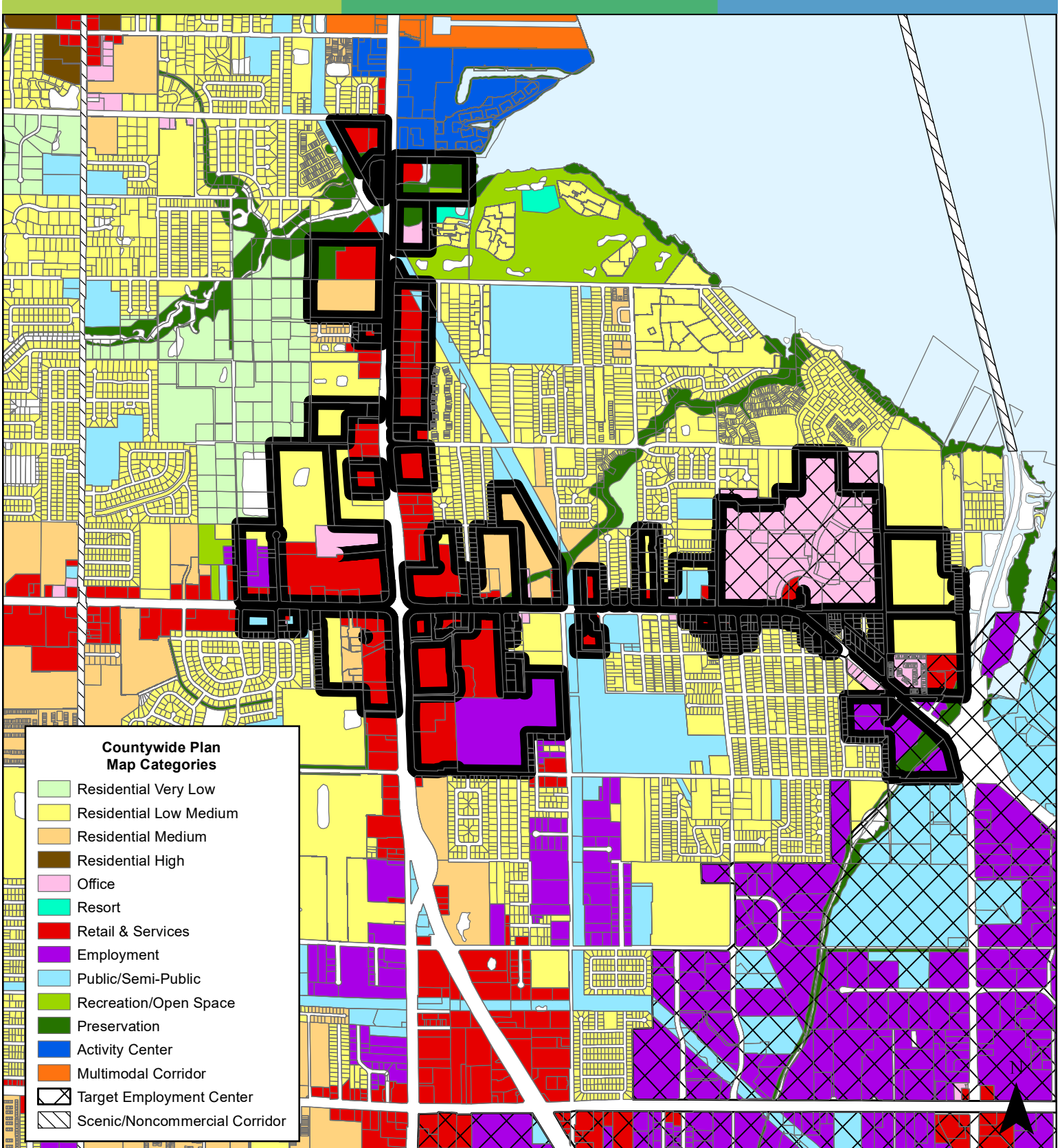
JURISDICTION: Largo

AREA: 736.2 Acres

FROM: Retail & Services, Employment, Office, Public/Semi-Public,
Residential Medium, Residential Low Medium,
Recreation/Open Space and Preservation

TO: Multimodal Corridor and Activity Center



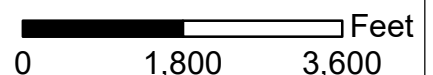


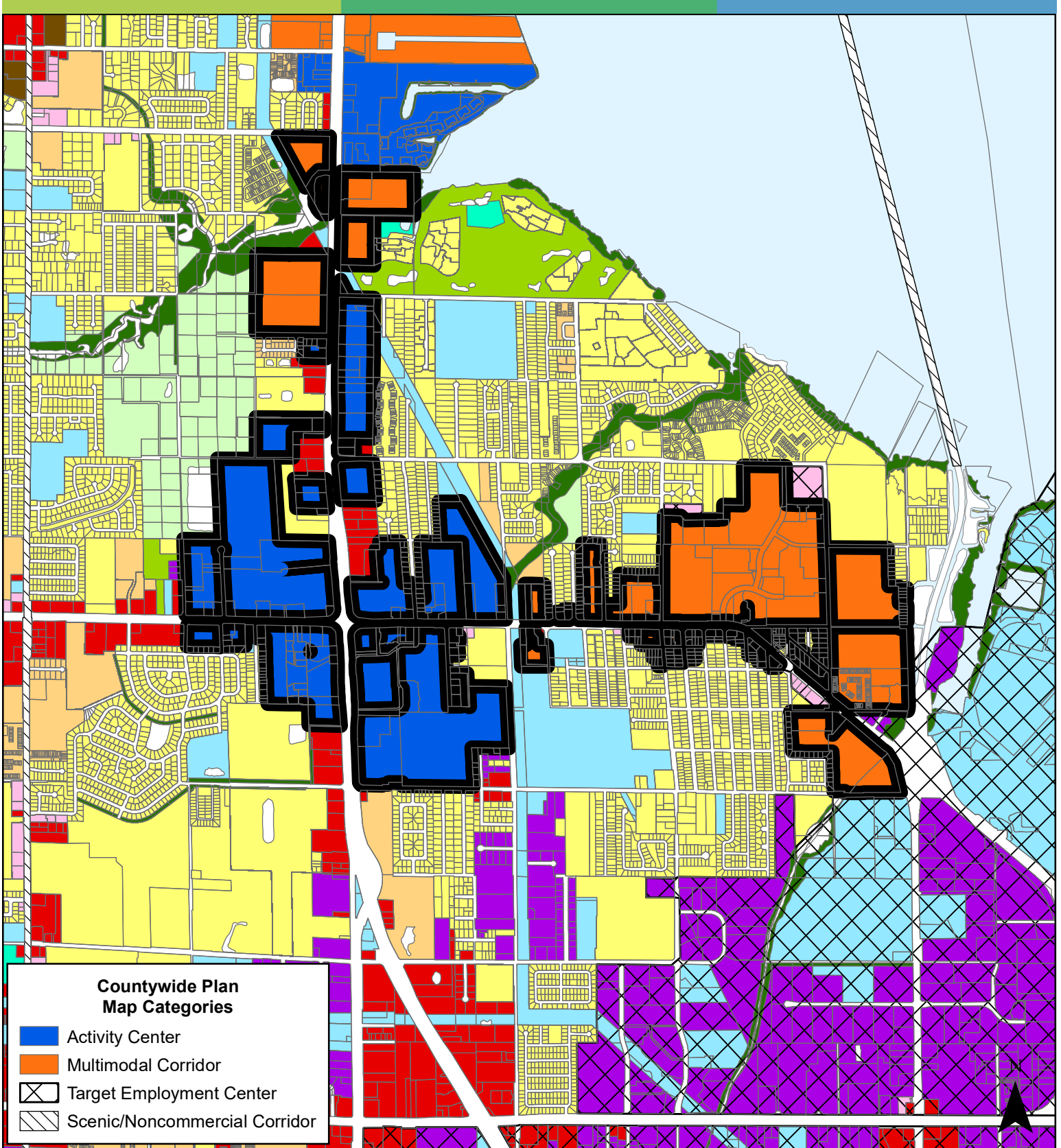
JURISDICTION: Largo

AREA: 736.2 Acres

FROM: Retail & Services, Employment, Office, Public/Semi-Public, Residential Medium, Residential Low Medium, Recreation/Open Space and Preservation

TO: Multimodal Corridor and Activity Center



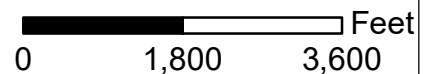


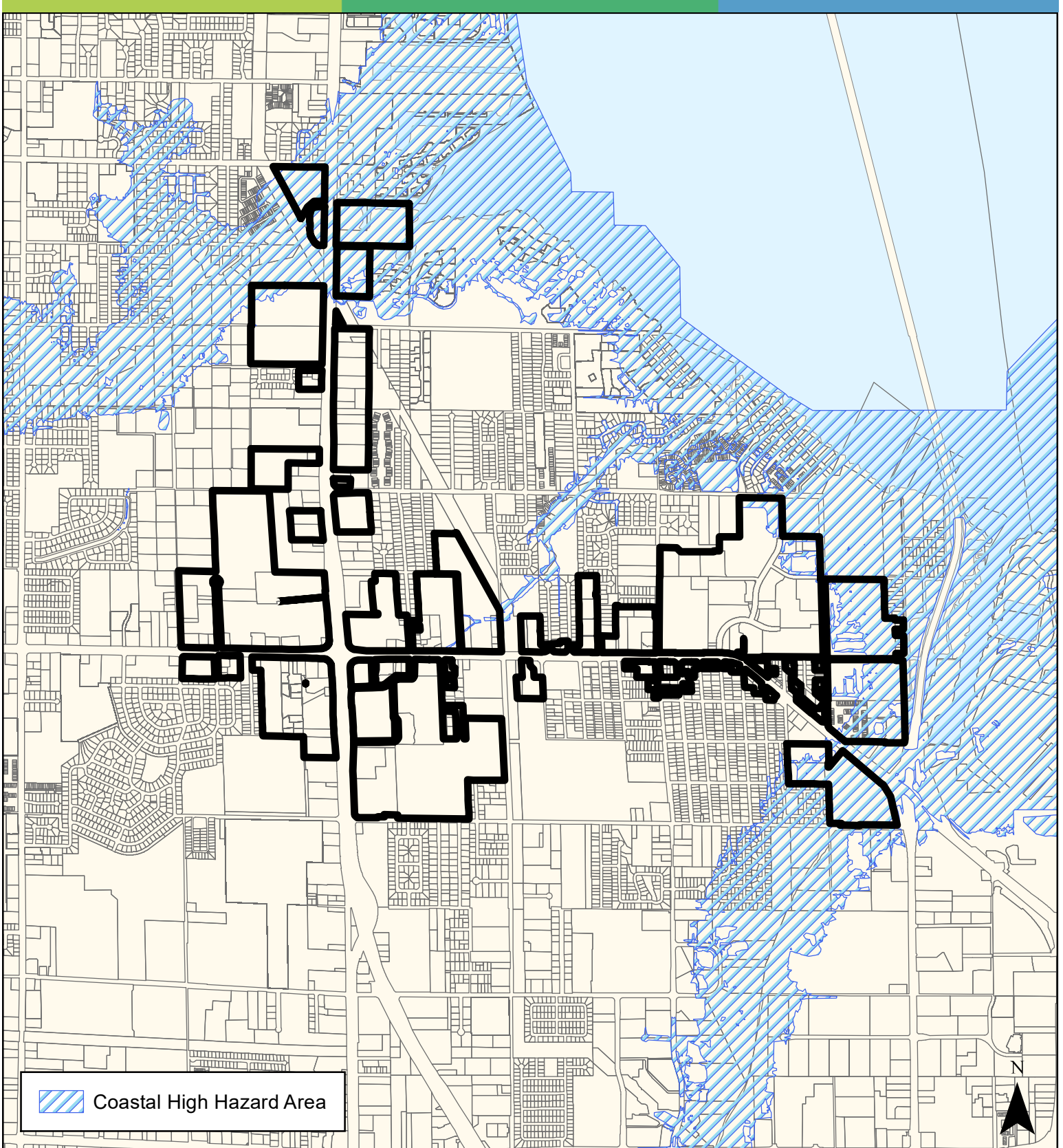
JURISDICTION: Largo

AREA: 736.2 Acres

FROM: Retail & Services, Employment, Office, Public/Semi-Public, Residential Medium, Residential Low Medium, Recreation/Open Space and Preservation

TO: Multimodal Corridor and Activity Center

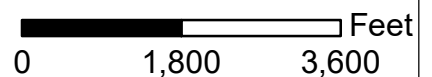




JURISDICTION: Largo

AREA: 736.2 Acres

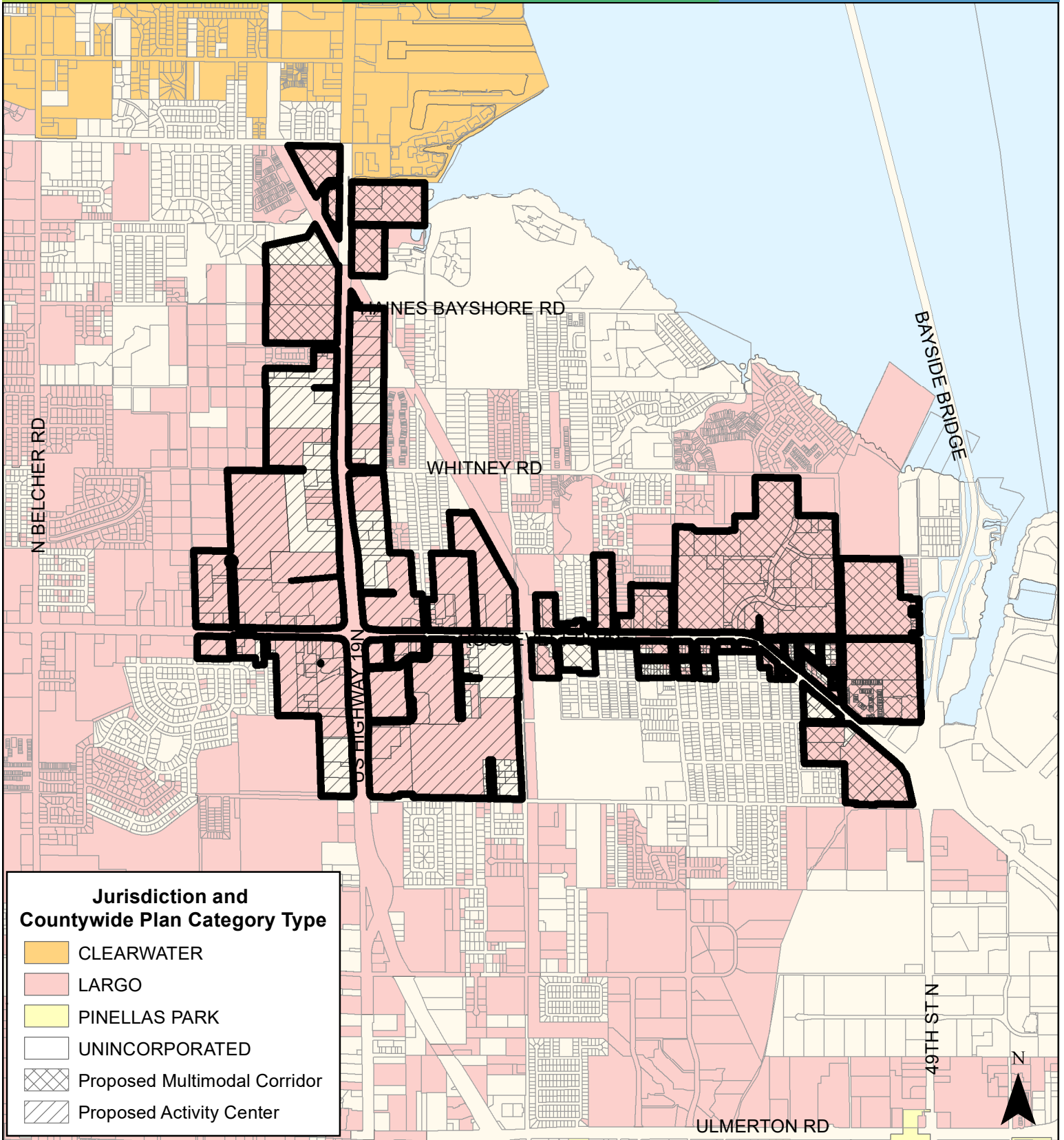
FROM: Retail & Services, Employment, Office, Public/Semi-Public,
Residential Medium, Residential Low Medium,
Recreation/Open Space and Preservation
TO: Multimodal Corridor and Activity Center

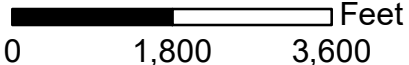


Case CW20-18

Map 7: Largo Tri-City Special Area

Plan Amendment Area



| | | |
|------------------------------------------------|------------------------------------------------------------------------------------------------------------------------------------------------------------|---------------------------------------------------------------------------------------|
| JURISDICTION: Largo and Pinellas County | FROM: Retail & Services, Employment, Office, Public/Semi-Public, Residential Medium, Residential Low Medium, Recreation/Open Space and Preservation | |
| AREA: 881 Acres | TO: Multimodal Corridor and Activity Center |  |