

Case CW24-16

Map 1: Location Map



JURISDICTION: Largo

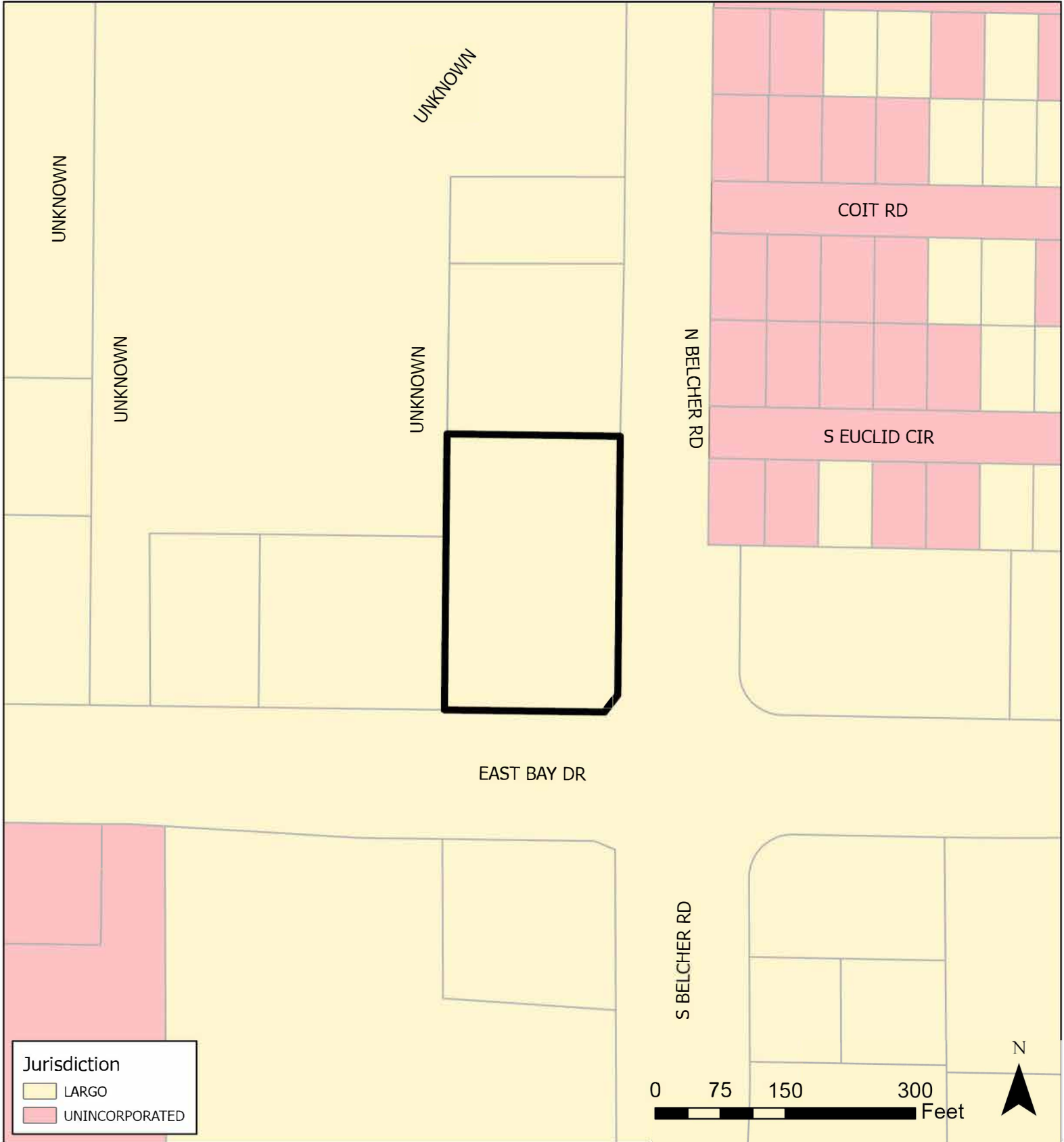
FROM: Office, Retail & Services and Scenic/Noncommercial Corridor

AREA: 1.46 acres m.o.l.

TO: Retail & Services and Scenic/Noncommercial Corridor

Case CW24-16

Map 2: Jurisdictional Map



JURISDICTION: Largo

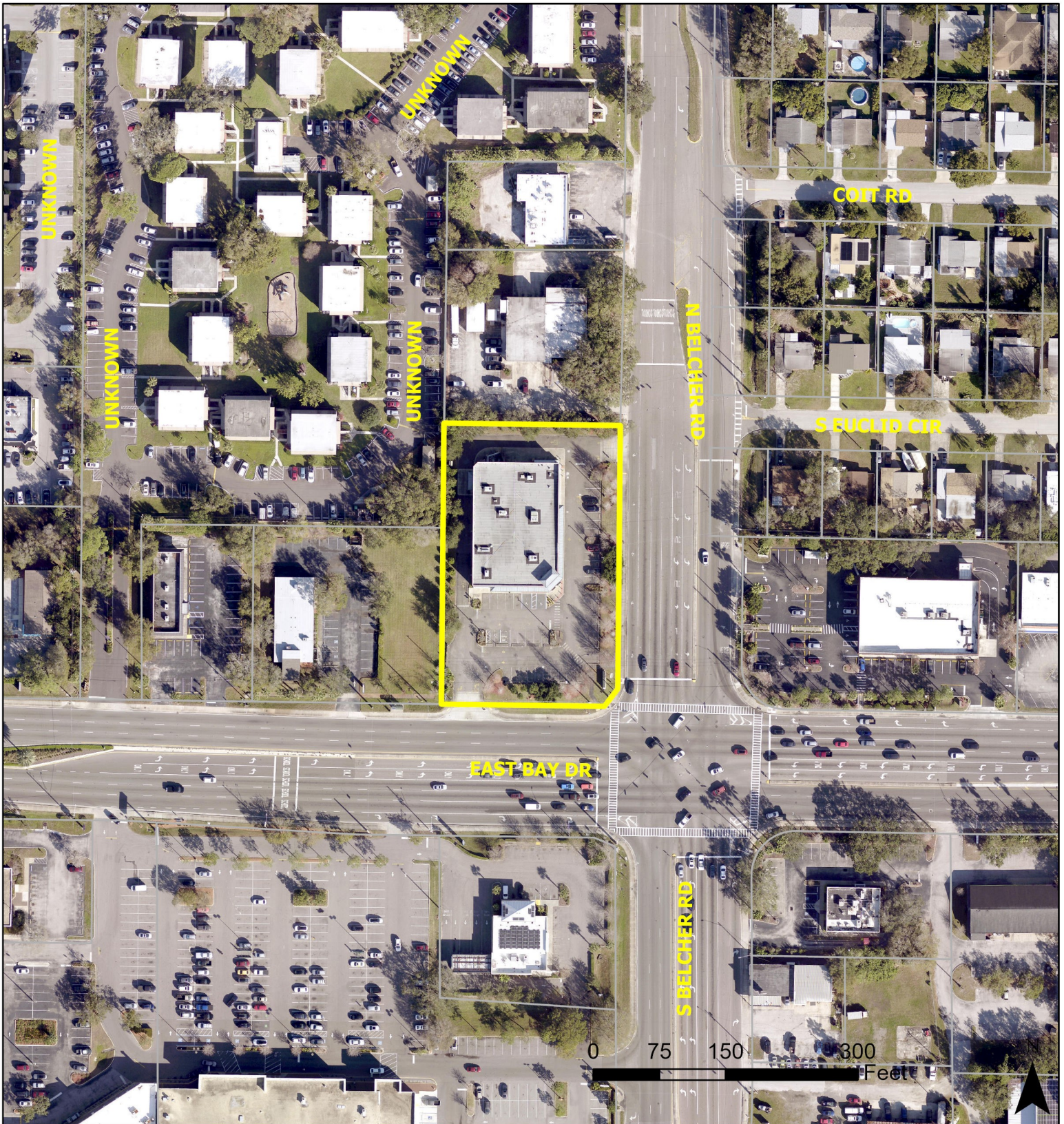
AREA: 1.46 acres m.o.l.

FROM: Office, Retail & Services and Scenic/Noncommercial Corridor

TO: Retail & Services and Scenic/Noncommercial Corridor

Case CW24-16

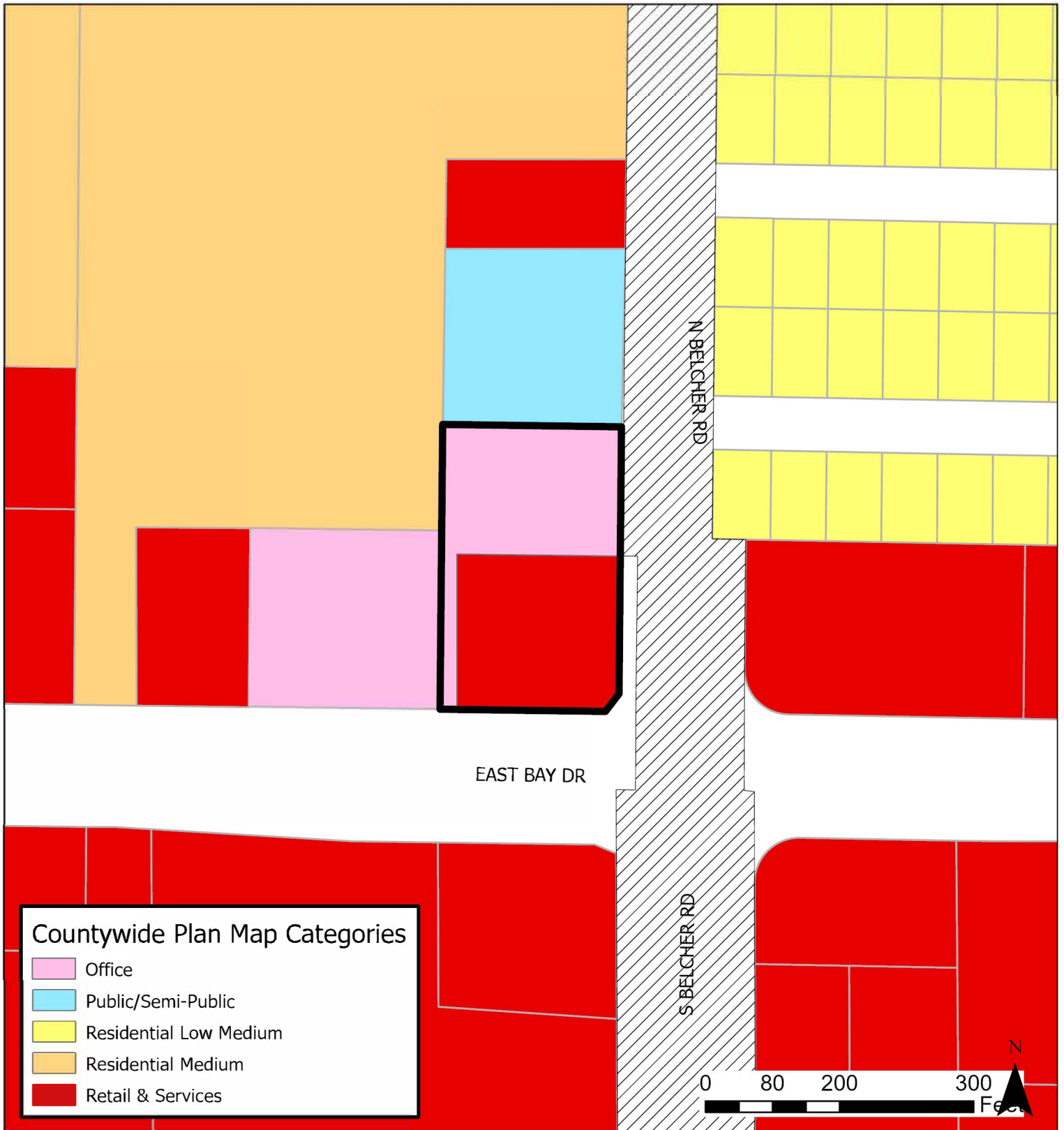
Map 3: Aerial Map



JURISDICTION: Largo	FROM: Office, Retail & Services and Scenic/Noncommercial Corridor
AREA: 1.46 acres m.o.l.	TO: Retail & Services and Scenic/Noncommercial Corridor

Case CW24-16

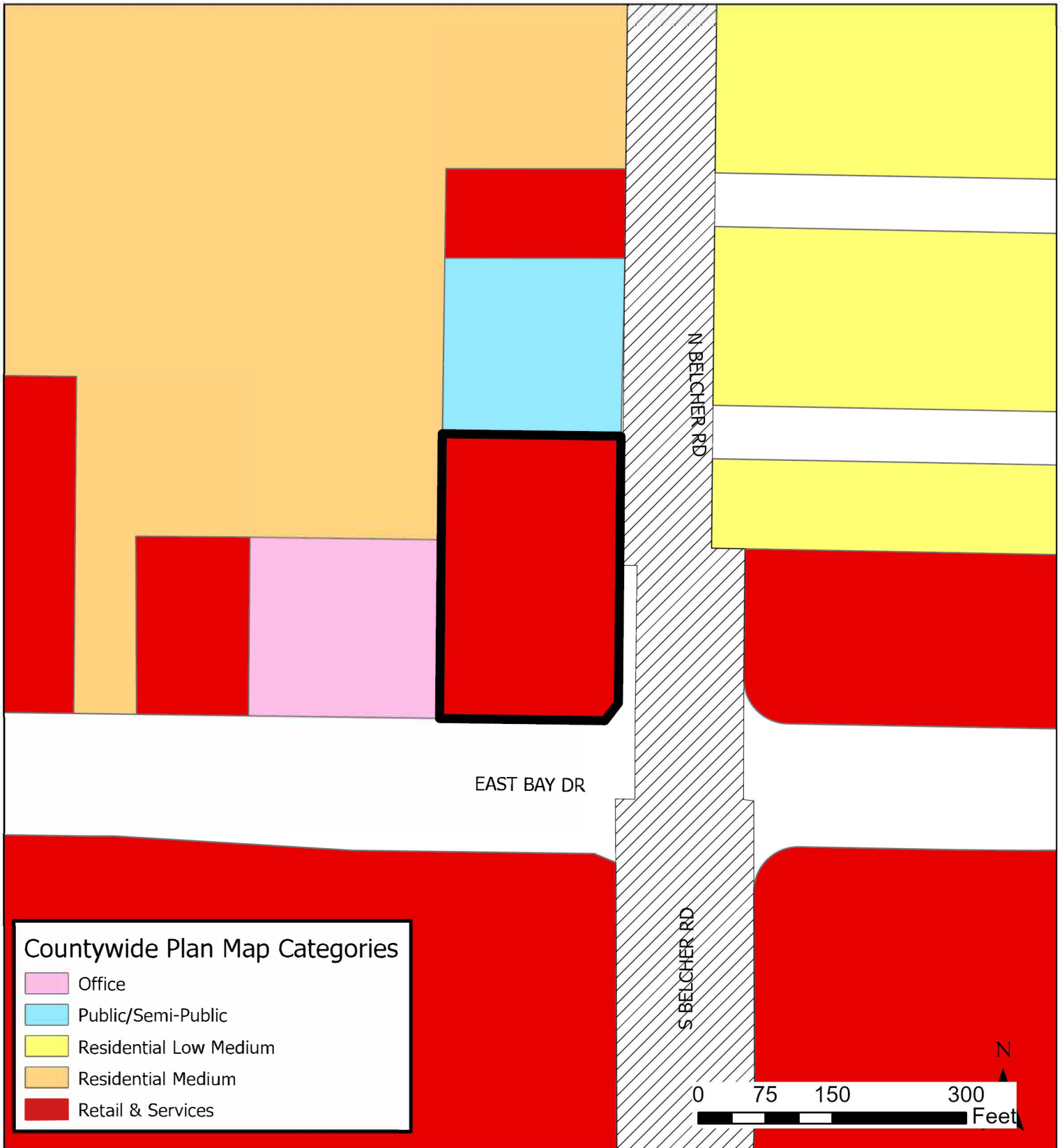
Map 4: Current Countywide Plan Map



Countywide Plan Map Categories

- Office
- Public/Semi-Public
- Residential Low Medium
- Residential Medium
- Retail & Services

JURISDICTION: Largo
AREA: 1.46 acres m.o.l
FROM: Office, Retail & Services and Scenic/Noncommercial Corridor
TO: Retail & Services and Scenic/Noncommercial Corridor



Countywide Plan Map Categories

- Office
- Public/Semi-Public
- Residential Low Medium
- Residential Medium
- Retail & Services

JURISDICTION: Largo

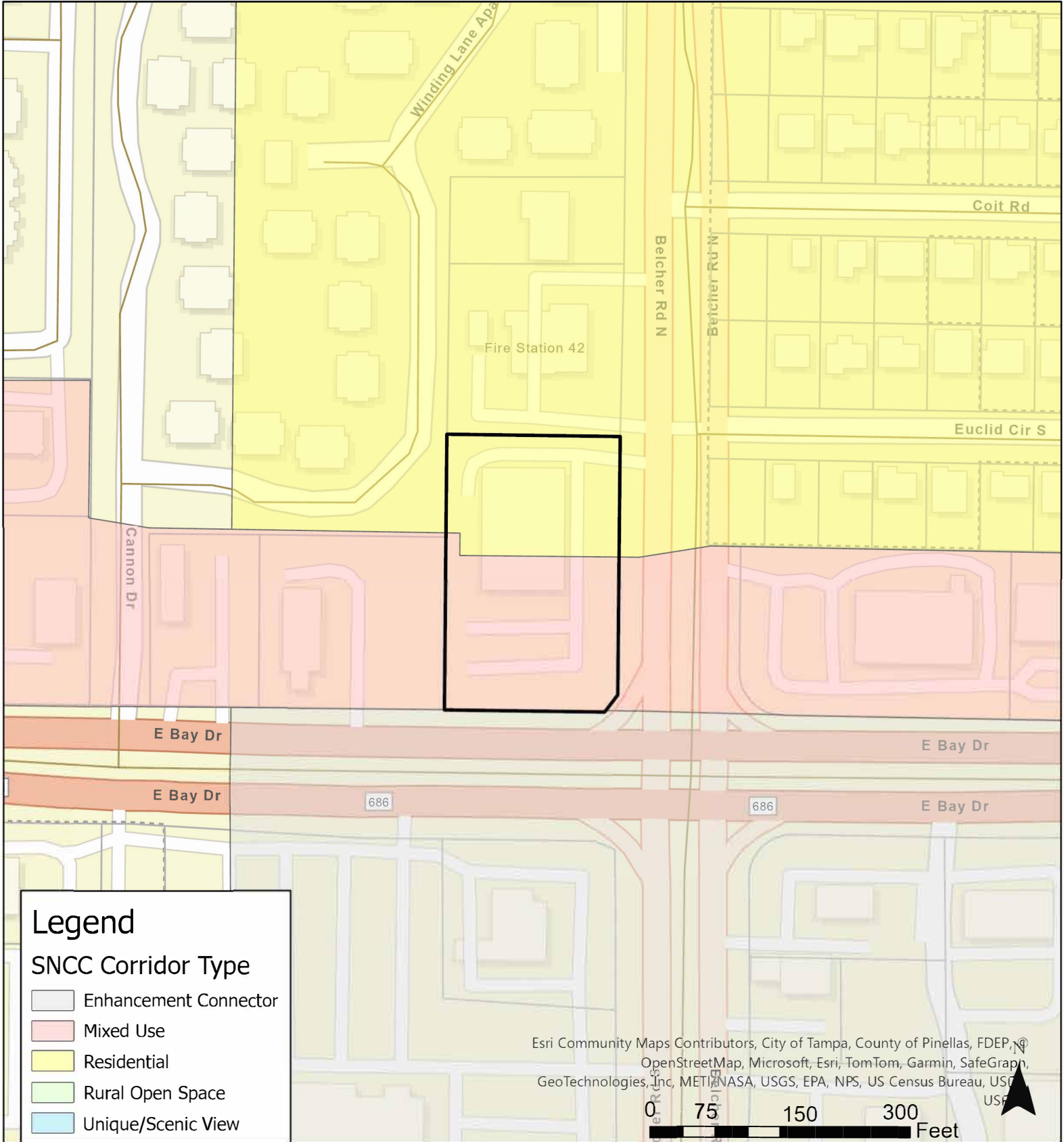
AREA: 1.46 acres m.o.l

FROM: Office and Retail & Services and Scenic/Noncommercial Corridor

TO: Retail & Services and Scenic/Noncommercial Corridor

Case CW24-16

Map 6: Current SNCC Classification



JURISDICTION: Largo

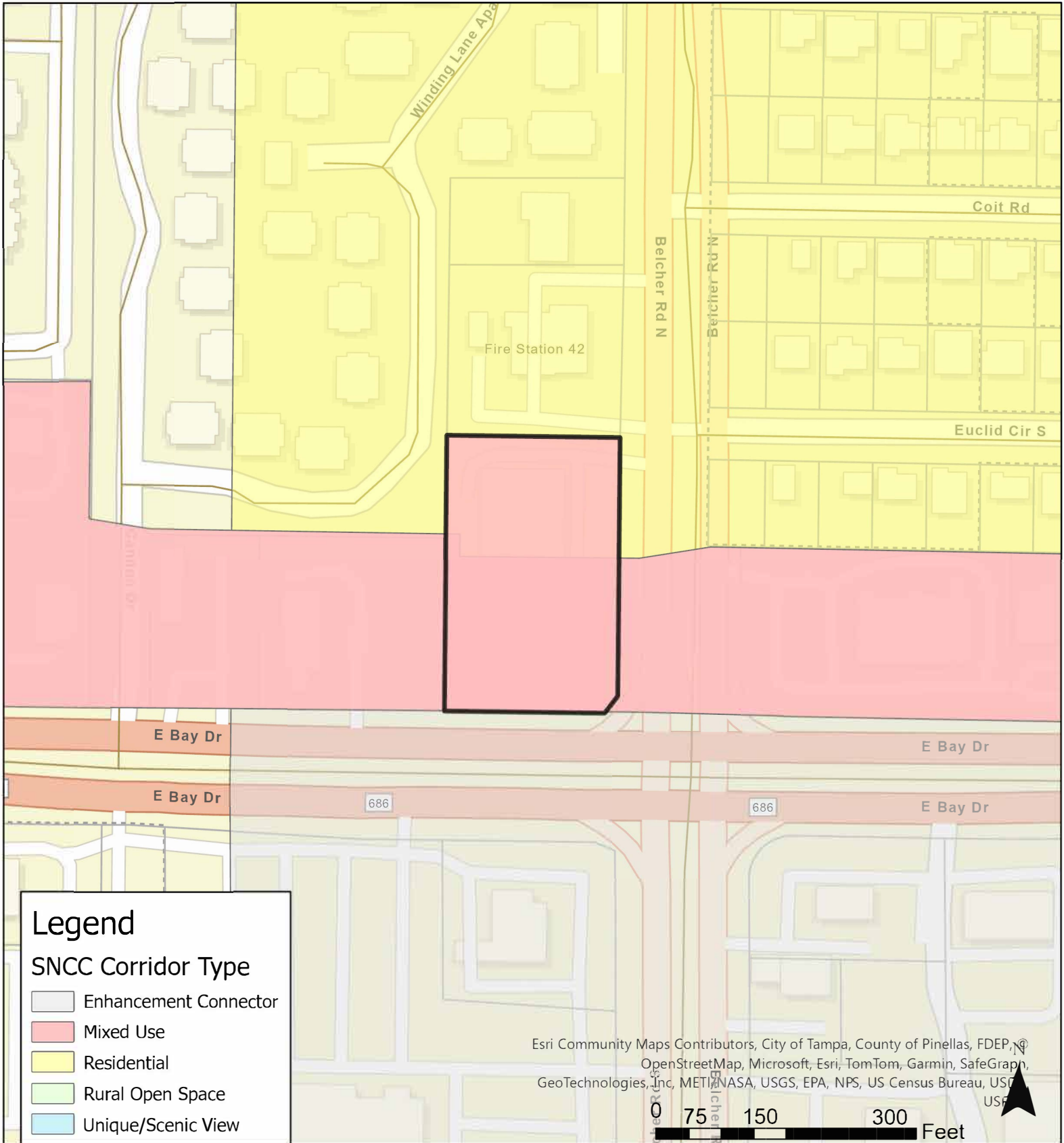
AREA: 1.46 acres m.o.l.

FROM: Office and Retail & Services and Scenic/Noncommercial Corridor

TO: Retail & Services and Scenic/Noncommercial Corridor

Case CW24-16

Map 7: Proposed SNCC Classification



JURISDICTION: Largo

AREA: 1.46 acres m.o.l.

FROM: Office, Retail & Services and Scenic/Noncommercial Corridor

TO: Retail & Services and Scenic/Noncommercial Corridor