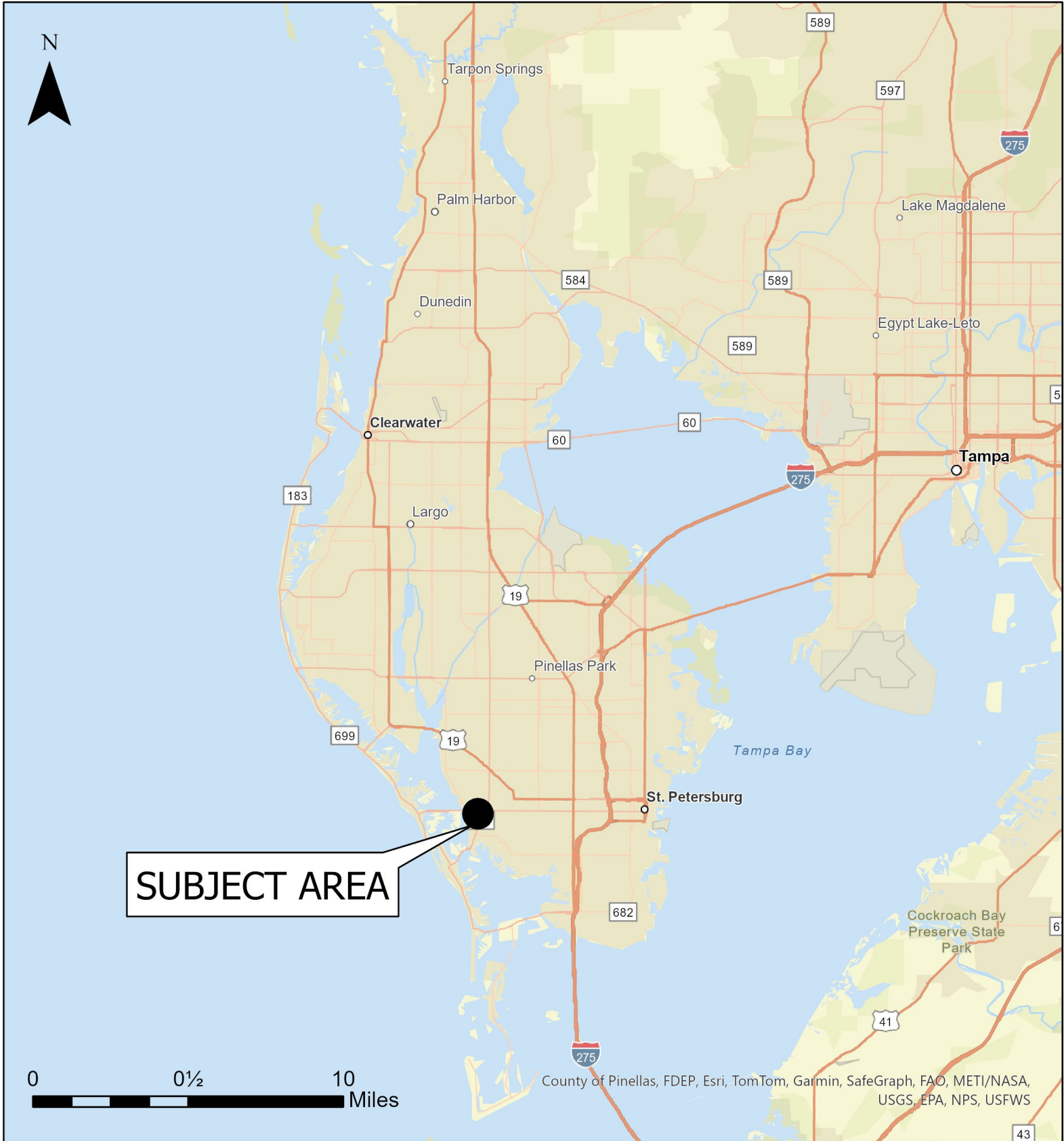


Case CW24-18

Map 1: Location Map



JURISDICTION: St. Petersburg

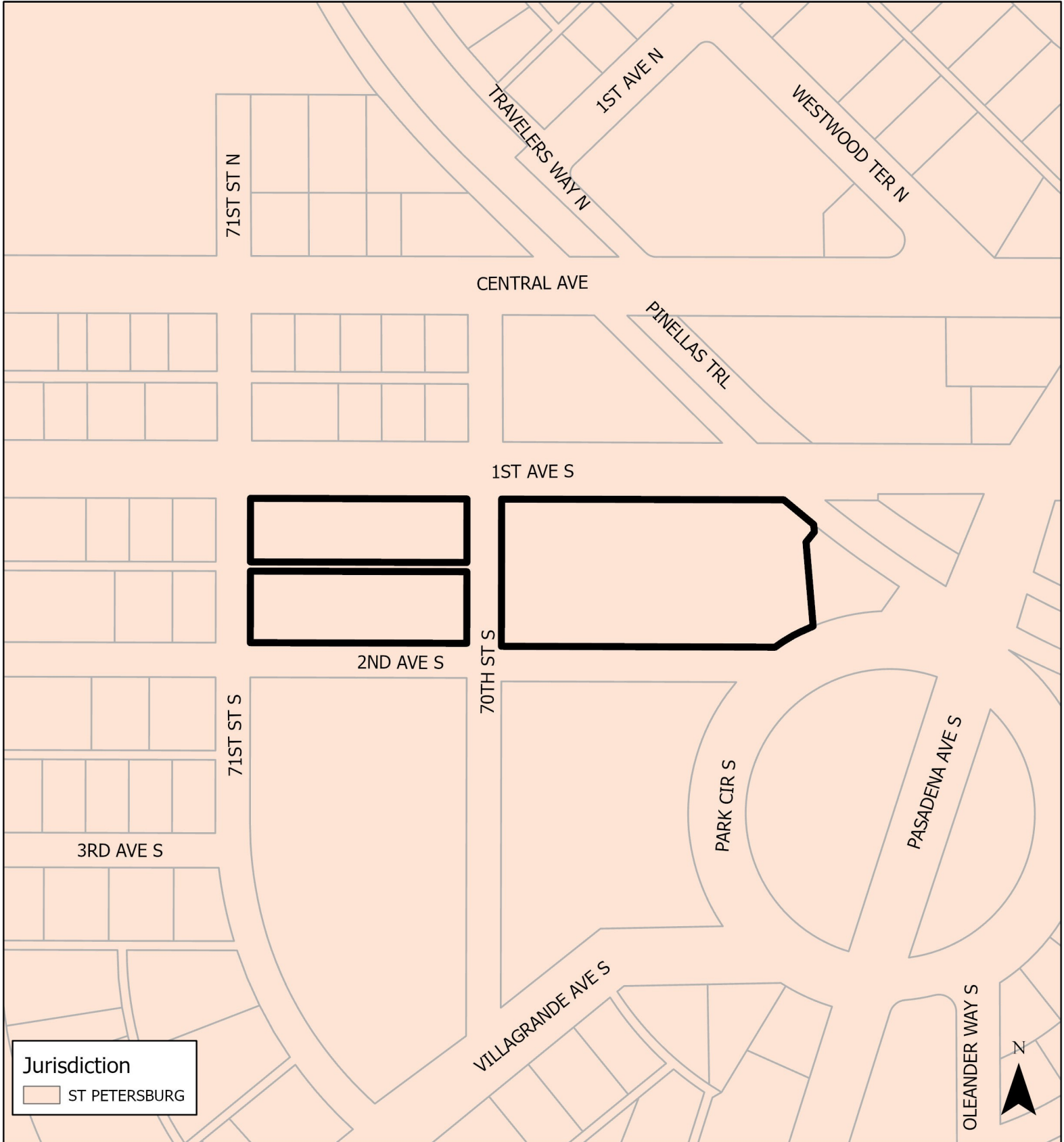
FROM: Public/Semi-Public

AREA: 5.09 acres m.o.l.

TO: Residential Medium

Case CW24-18

Map 2: Jurisdictional Map

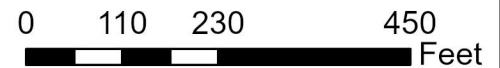


JURISDICTION: St. Petersburg

FROM: Public/Semi-Public

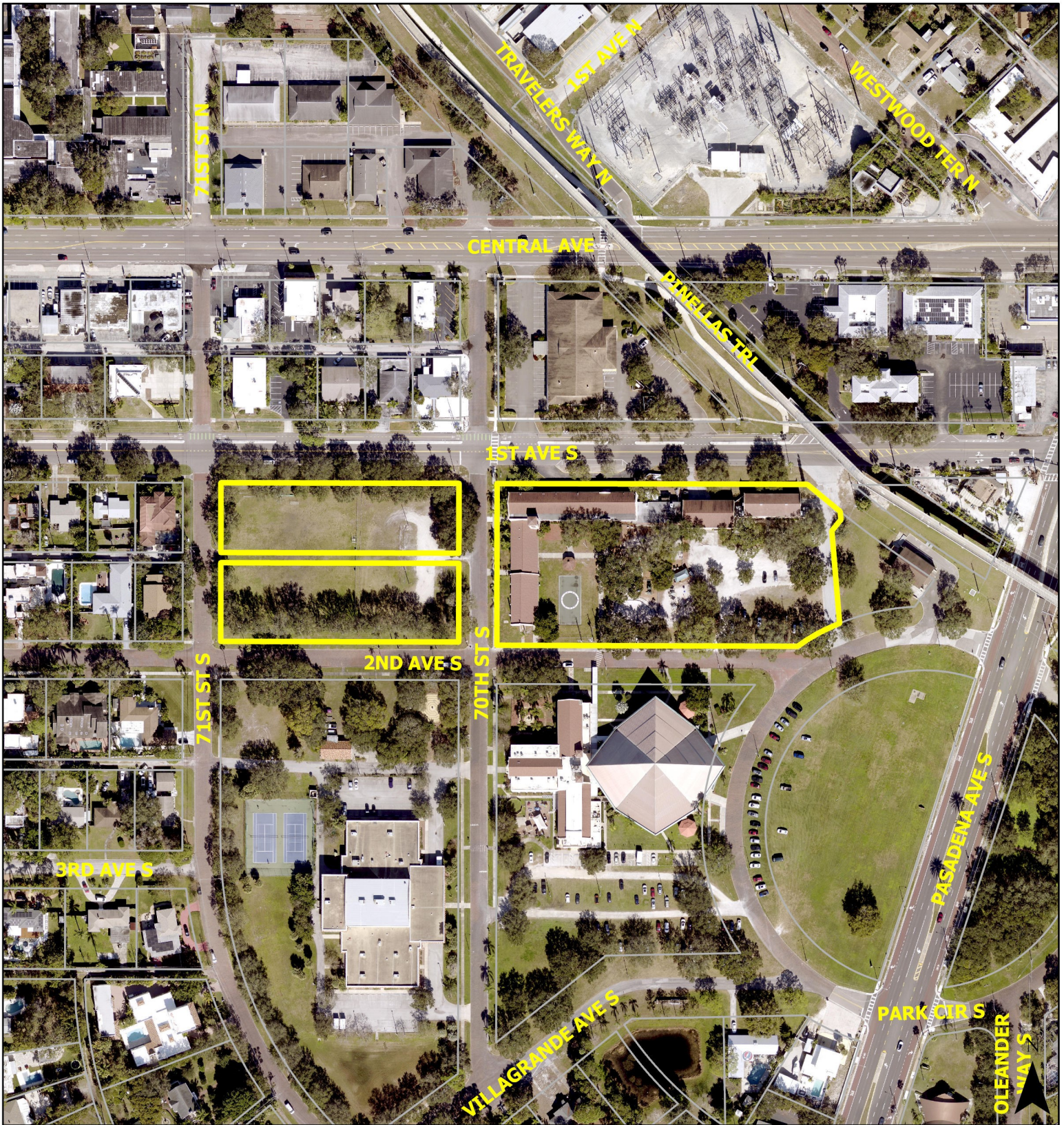
AREA: 5.09 acres m.o.l.

TO: Residential Medium



Case CW24-18

Map 3: Aerial Map



JURISDICTION: St. Petersburg

FROM: Public/Semi-Public

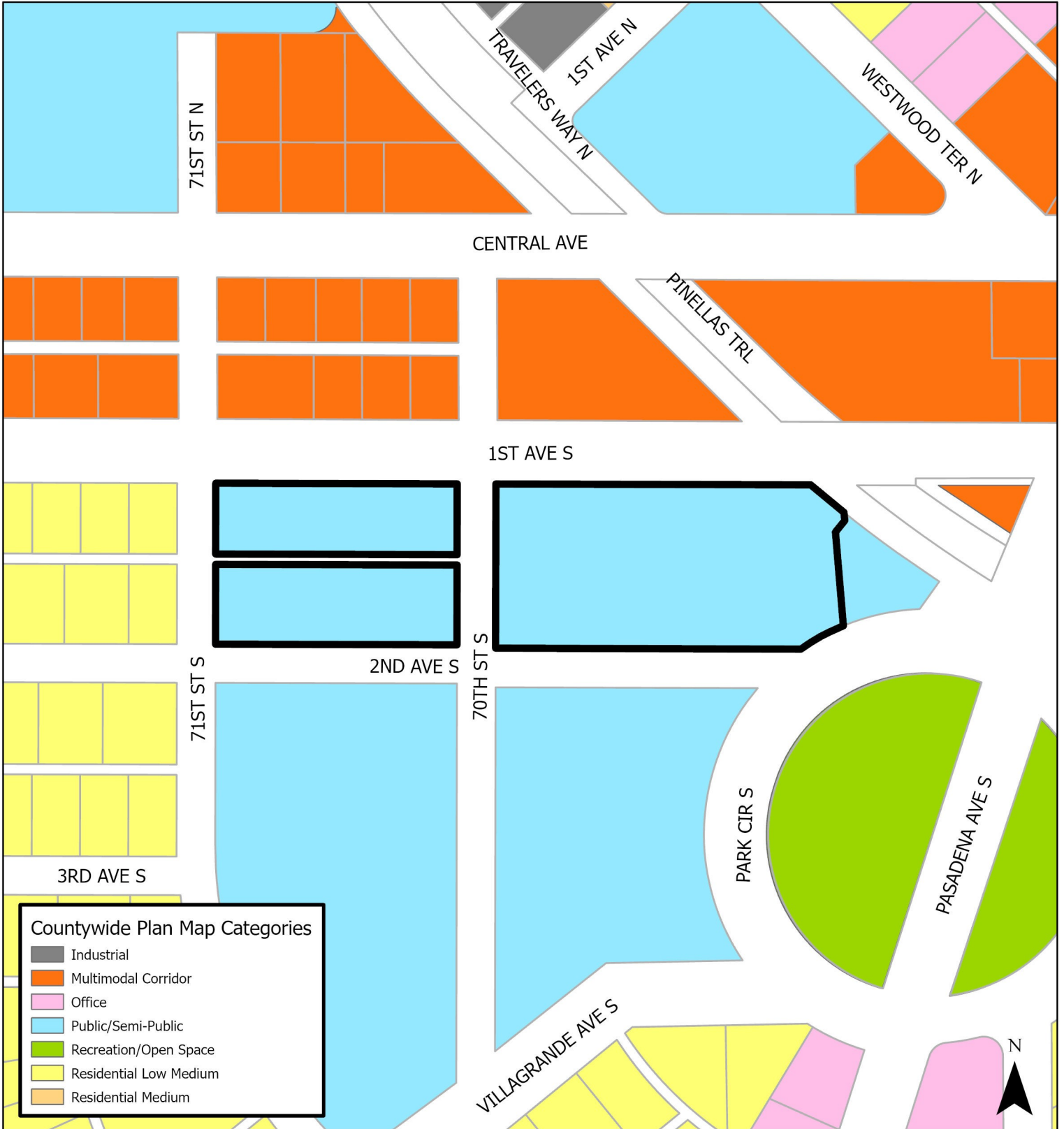
AREA: 5.09 acres m.o.l.

TO: Residential Medium



Case CW24-18

Map 4: Current Countywide Plan Map



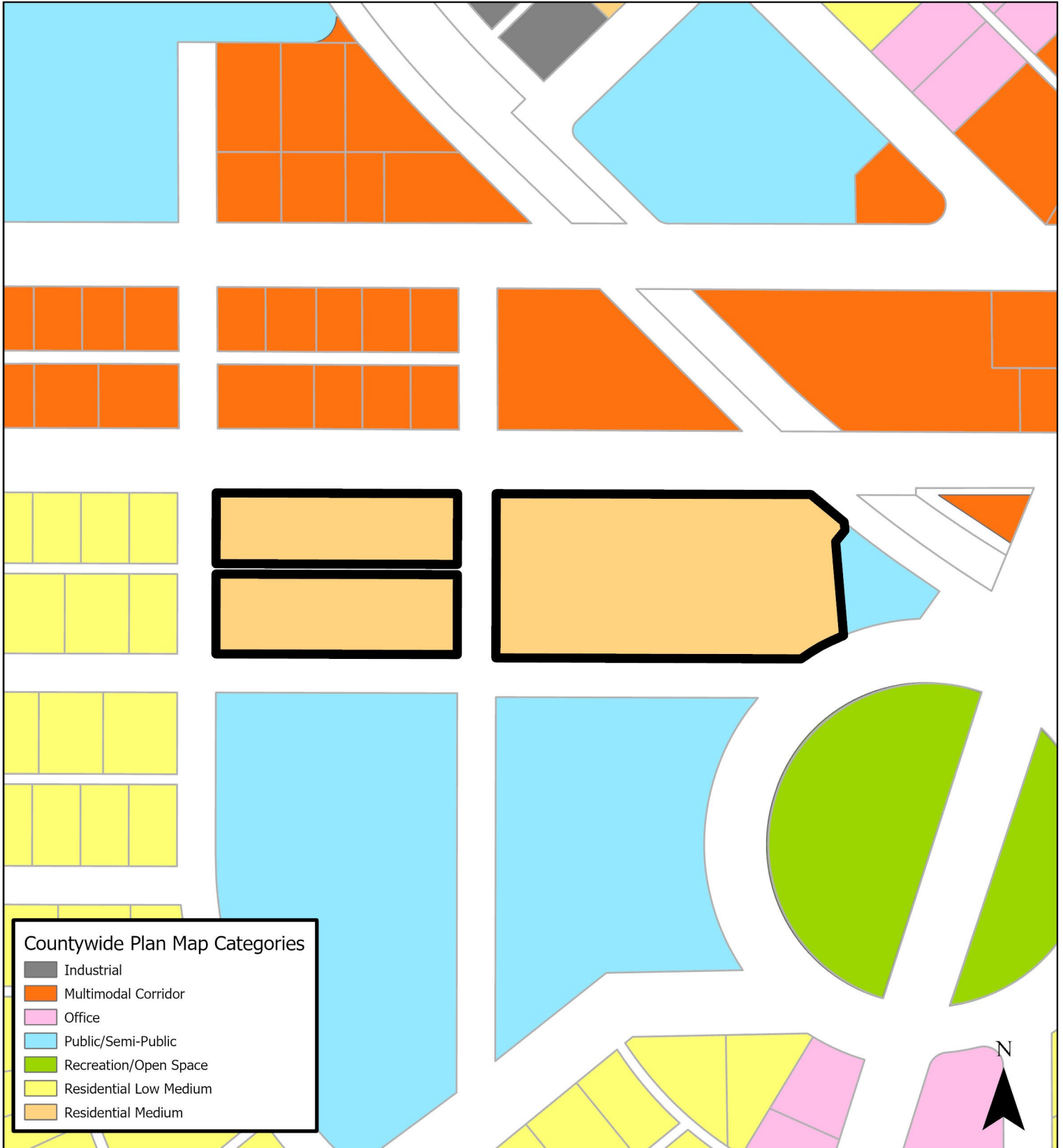
JURISDICTION: St. Petersburg

FROM: Public/Semi-Public

AREA: 5.09 acres m.o.l

TO: Residential Medium





JURISDICTION: St. Petersburg
AREA: 5.09 acres m.o.l.

FROM: Public/Semi-Public
TO: Residential Medium

