

**Map 1 - Location**

**CASE #:** CW19-10

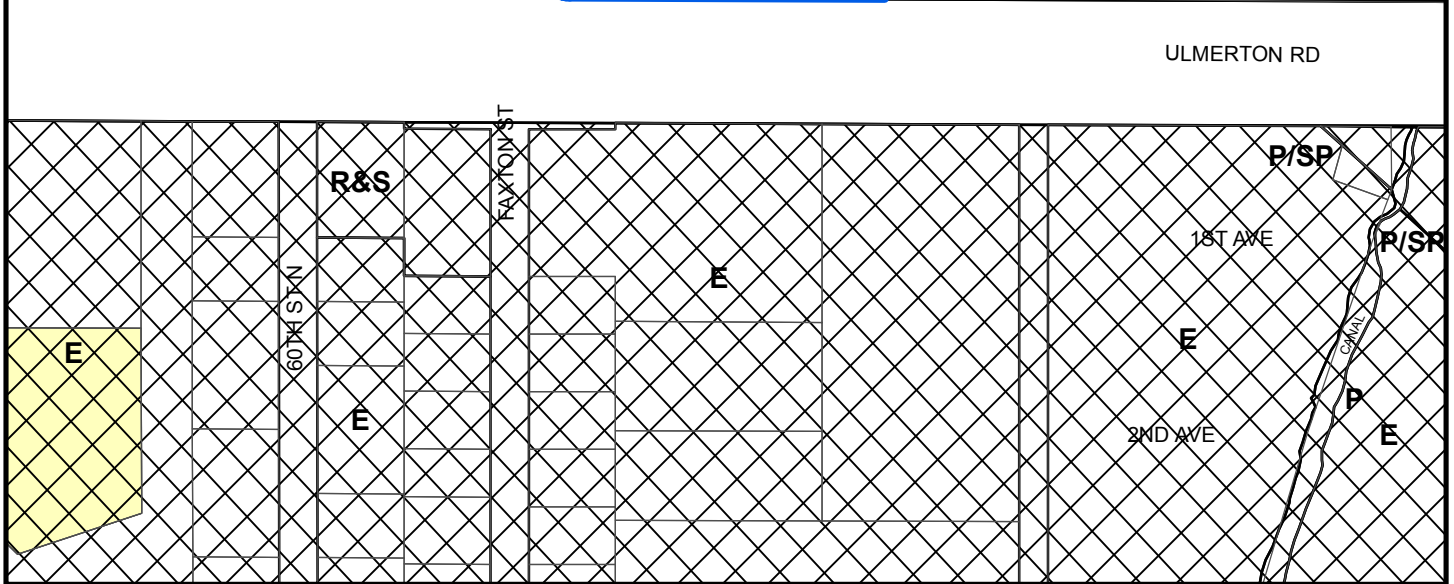
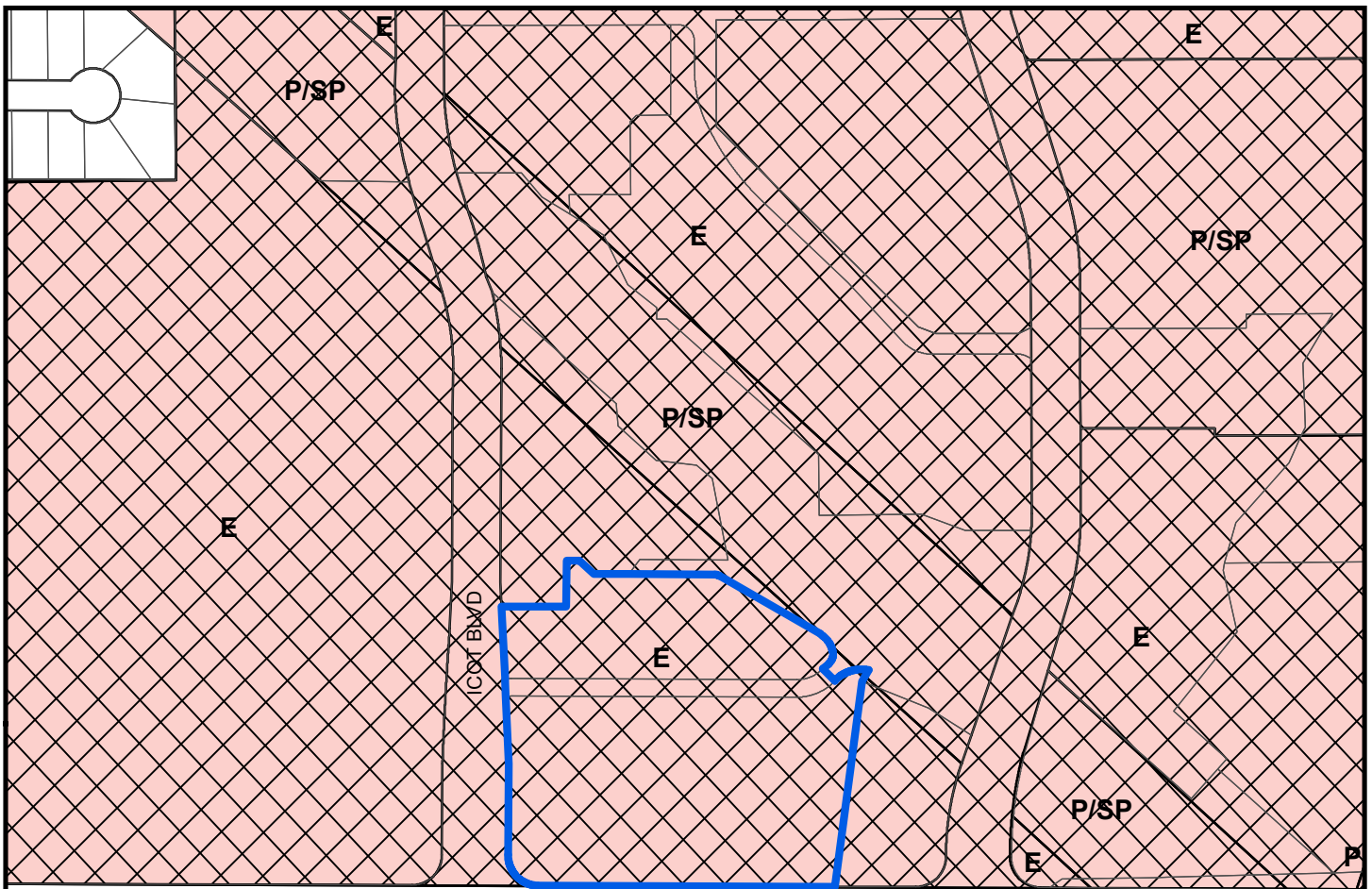
**FROM:** Employment & Target Employment Center

**AREA:** 6.4 Acres

**JURISDICTION:** Largo

**TO:** Retail and Services & Target Employment Center





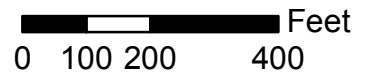
## Map 2 - Current Countywide Plan Map & Jurisdictional Map

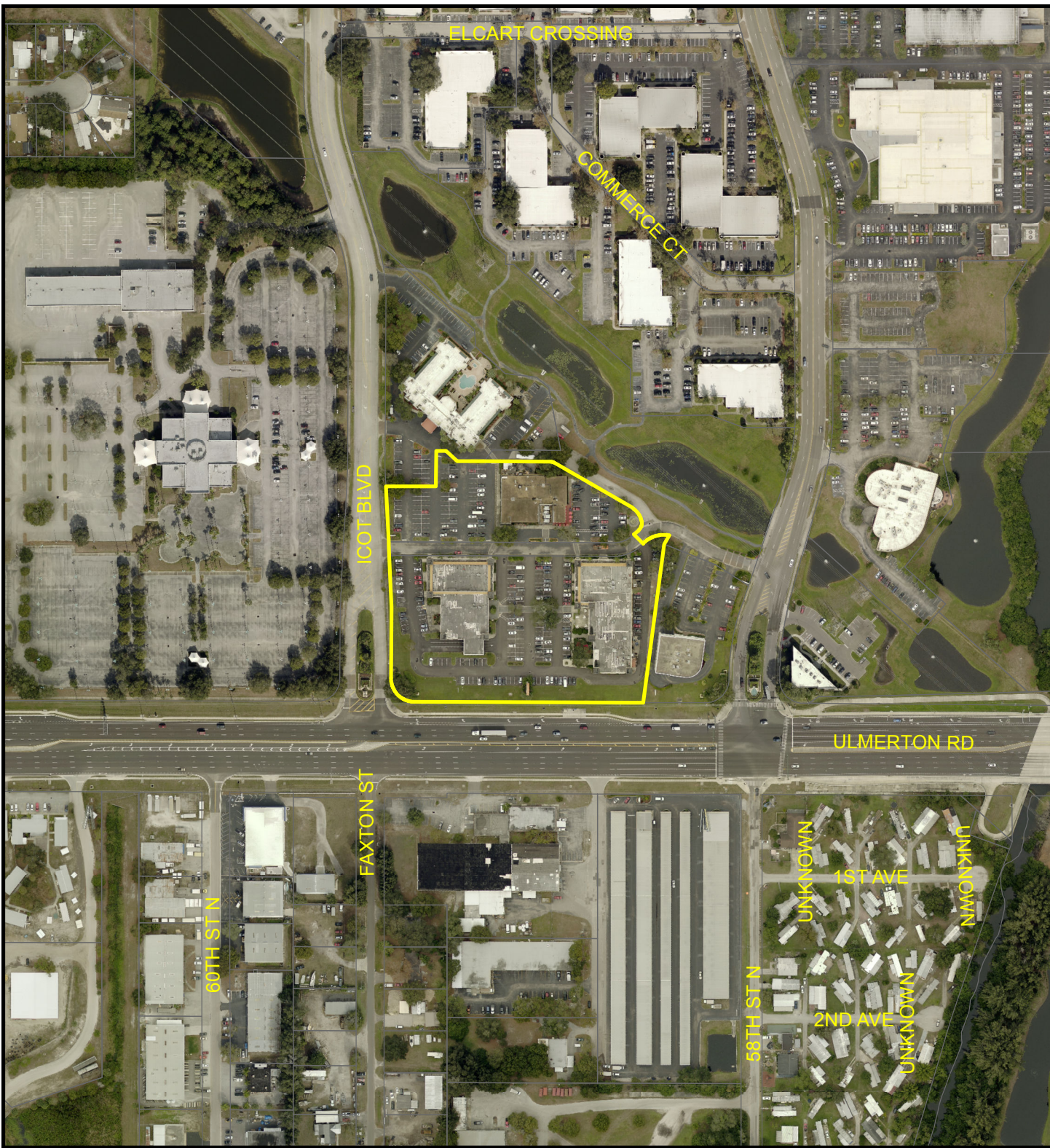
**CASE #:** CW19-10    **FROM:** Employment & Target Employment Center    **AREA:** 6.4 Acres

**JURISDICTION:** Largo    **TO:** Retail and Services & Target Employment Center

### LEGEND:

- Largo
- Pinellas Park
- Unincorporated





### Map 3 - Aerial

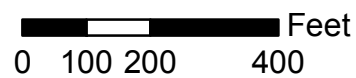
**CASE #:** CW19-10

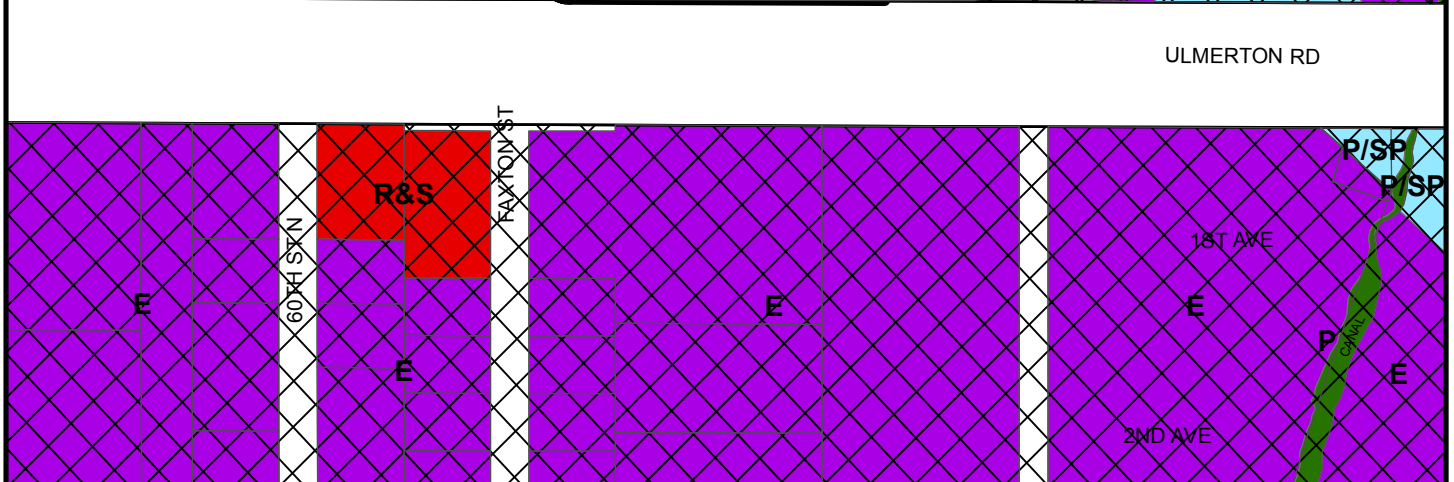
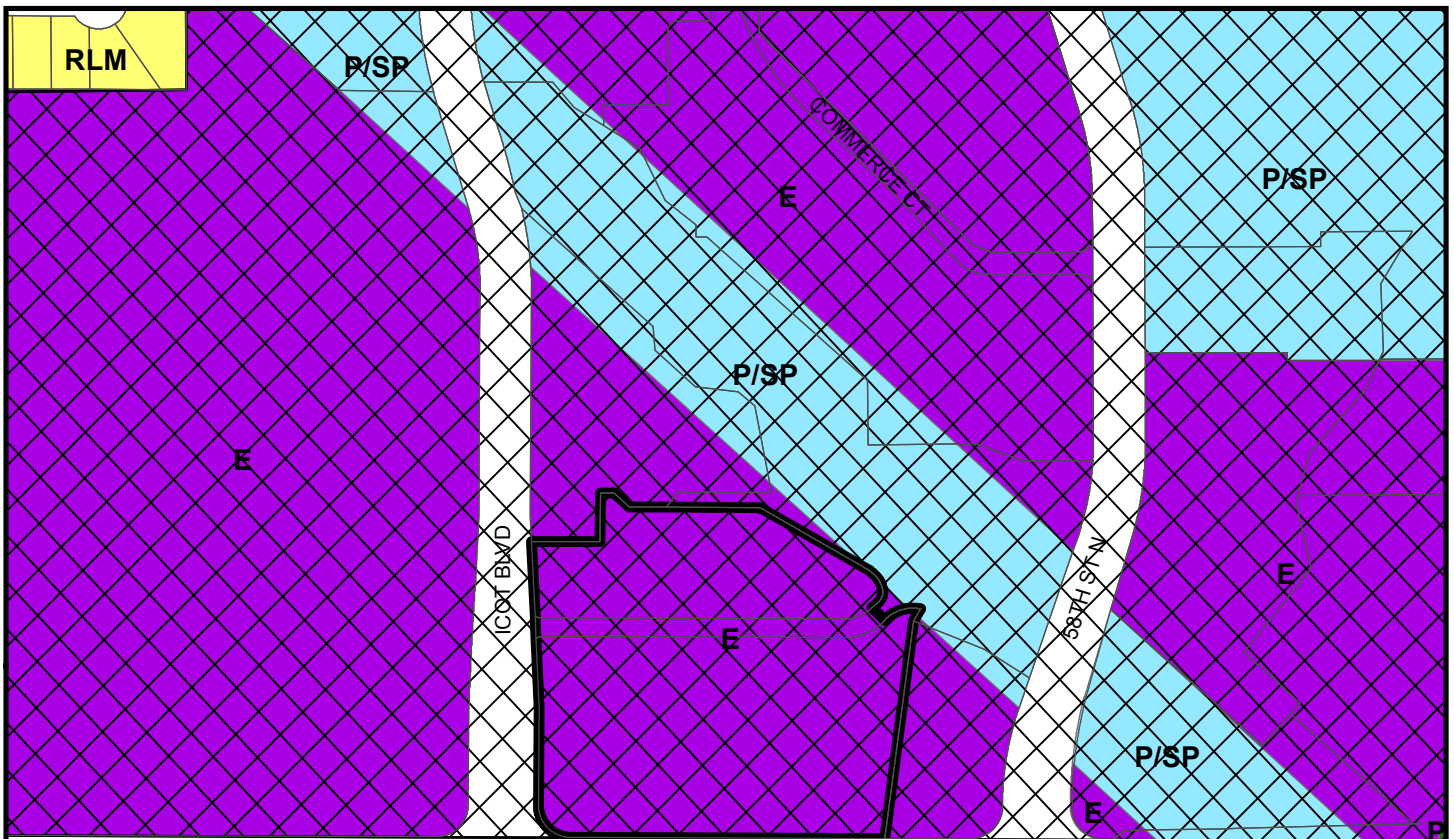
**FROM:** Employment & Target Employment Center

**AREA:** 6.4 Acres

**JURISDICTION:** Largo

**TO:** Retail and Services & Target Employment Center





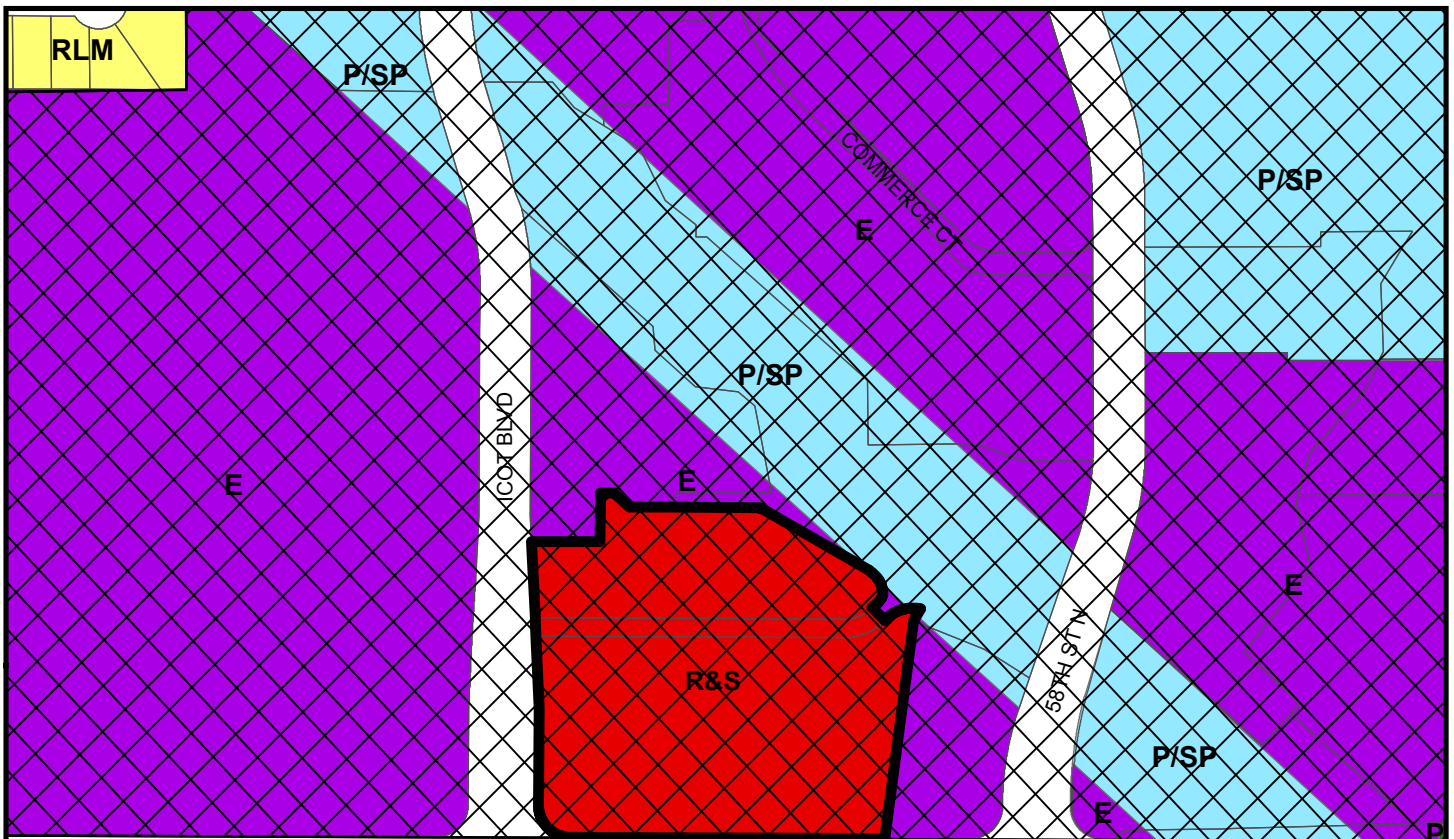
**Countywide Plan Map Categories**

Residential Low Medium	Public/Semi-Public
Retail & Services	Preservation
Employment	Target Employment Center

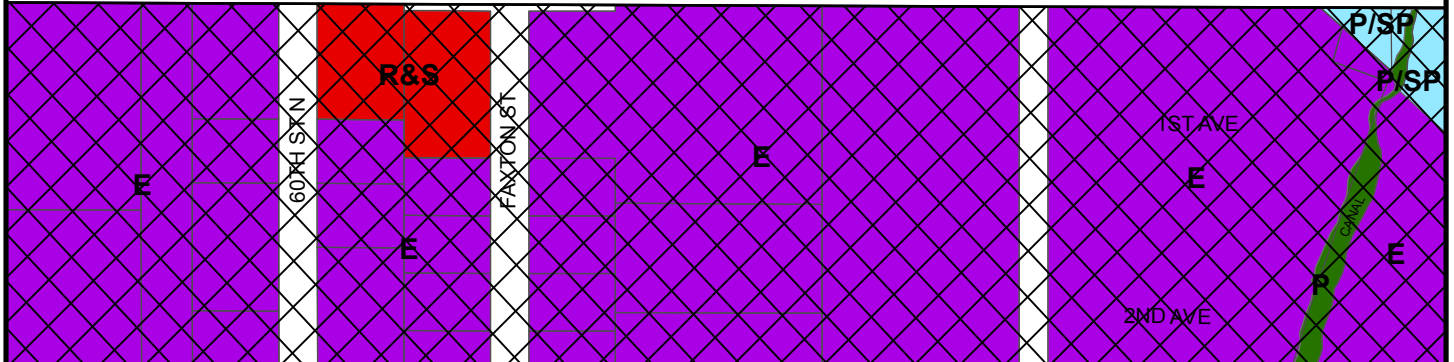
**Map 4 - Current Countywide Plan Map**

**CASE #:** CW19-10     **FROM:** Employment & Target Employment Center     **AREA:** 6.4 Acres

**JURISDICTION:** Largo     **TO:** Retail and Services & Target Employment Center



ULMERTON RD



### Countywide Plan Map Categories

- Residential Low Medium
- Employment
- Preservation
- Retail & Services
- Public/Semi-Public
- Target\_Employment\_Centers

### Map 5 - Proposed Countywide Plan Map

**CASE #:** CW19-10    **FROM:** Employment & Target Employment Center    **AREA:** 6.4 Acres  
**JURISDICTION:** Largo    **TO:** Retail and Services & Target Employment Center

