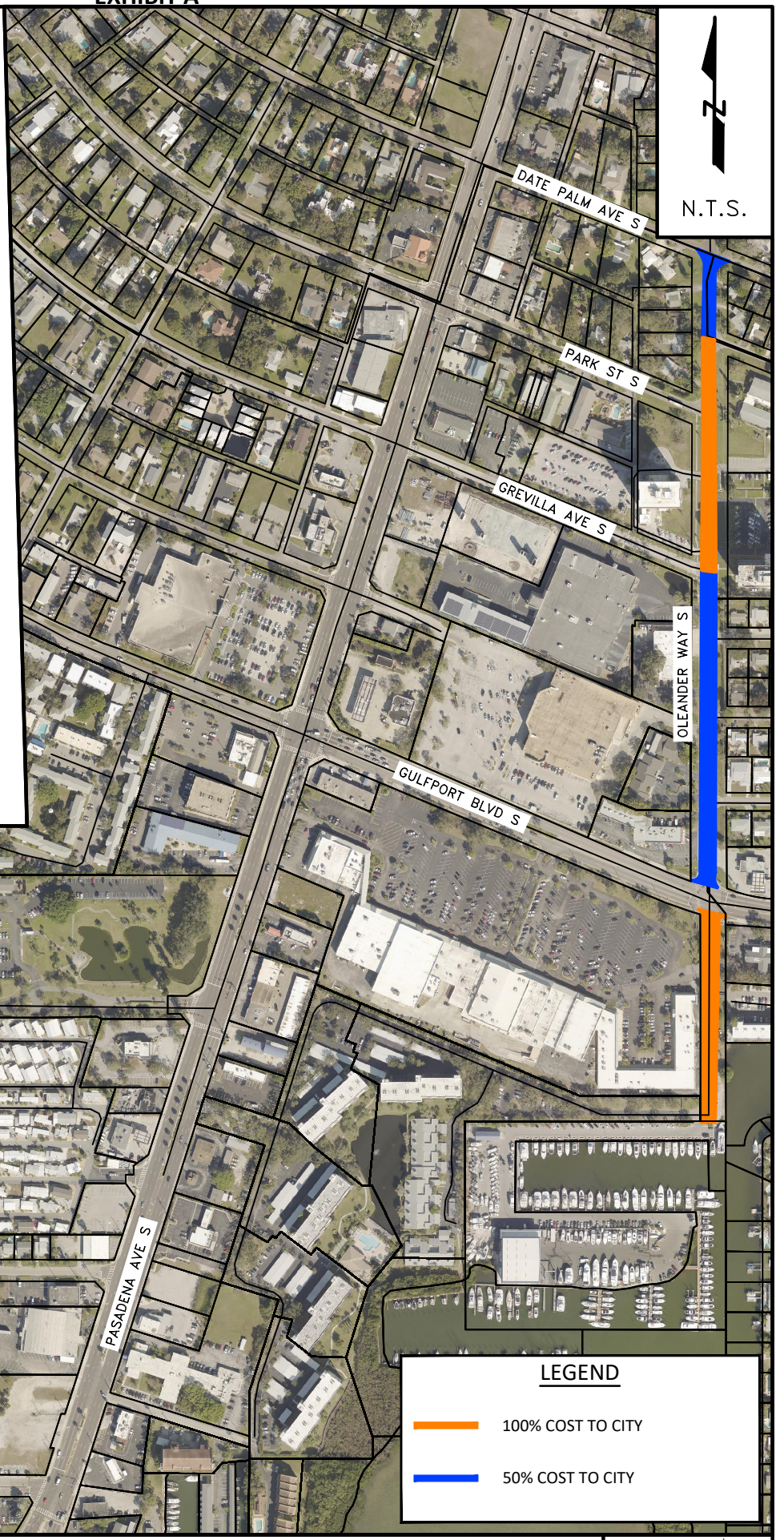
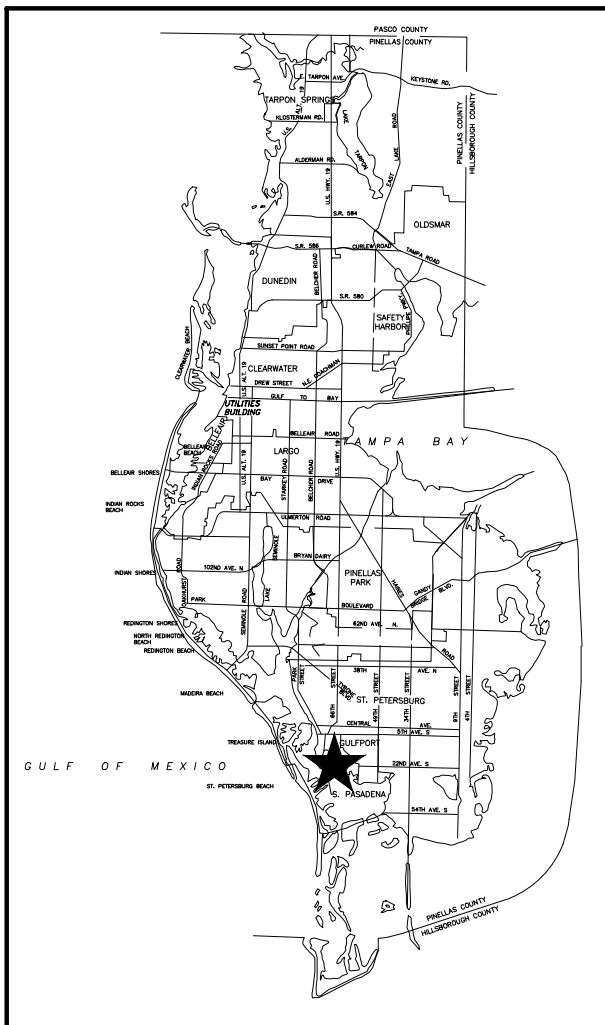


EXHIBIT A



LEGEND

- 100% COST TO CITY
- 50% COST TO CITY

**OLEANDER WAY
HUFFMAN WAY**



Exhibit A

Oleander - 50% Paving - Preferred Materials

Line No.	Pay Item No.	Description	Unit	Quantity	Unit Price	Amount
2	102-1099	SIGN, VARIABLE MESSAGE, 3 Lines, Temporary	DAY	14	\$ 2.00	\$ 28.00
7	334-2095-460	SUPERPAVE ASPHALT CONCRETE, Leveling Course, Type SP 9.5 or SP 12.5, Fine, Traffic Level C, Variable Thickness	TN	5	\$ 142.00	\$ 710.00
63	334-3125-001	SUPERPAVE ASPHALT CONCRETE, Type SP 12.5, Fine, Traffic Level C, Variable Thickness Local Roads	TN	193	\$ 142.70	\$ 27,541.10
13	380-3490	MILLING EXISTING ASPHALT PAVEMENT, 2" Thickness or Less, Full Width	SY	2339	\$ 2.19	\$ 5,122.41
30	706-3	PAVEMENT MARKERS, RETRO-REFLECTIVE	EA	36	\$ 4.46	\$ 160.56
31	710-11-121	PAINTED PAVEMENT MARKING, STD, WHITE, SOLID, 6"	LF	1699	\$ 3.50	\$ 5,946.50
33	710-11-123	PAINTED PAVEMENT MARKING, STD, WHITE, SOLID, 12"	LF	55	\$ 3.50	\$ 192.50
35	710-11-125	PAINTED PAVEMENT MARKING, STD, WHITE, SOLID, 24"	LF	70	\$ 3.50	\$ 245.00
42	710-11-221	PAINTED PAVEMENT MARKING, STD, YELLOW, SOLID, 6"	LF	1388	\$ 3.50	\$ 4,858.00
54	999-0000	UNSPECIFIED WORK	EA	4400	\$ 1.00	\$ 4,400.00
		Subtotal				\$ 49,176.07

Oleander - 100% Paving - Preferred Materials

Line No.	Pay Item No.	Description	Unit	Quantity	Unit Price	Amount
2	102-1099	SIGN, VARIABLE MESSAGE, 3 Lines, Temporary	DAY	28	\$ 2.00	\$ 56.00
7	334-2095-460	SUPERPAVE ASPHALT CONCRETE, Leveling Course, Type SP 9.5 or SP 12.5, Fine, Traffic Level C, Variable Thickness	TN	10	\$ 142.00	\$ 1,420.00
63	334-3125-000	SUPERPAVE ASPHALT CONCRETE, Type SP 12.5, Fine, Traffic Level C, Variable Thickness Local Roads	TN	420	\$ 142.70	\$ 59,934.00
13	380-3490	MILLING EXISTING ASPHALT PAVEMENT, 2" Thickness or Less, Full Width	SY	5081	\$ 2.19	\$ 11,127.39
30	706-3	PAVEMENT MARKERS, RETRO-REFLECTIVE	EA	60	\$ 4.46	\$ 267.60
31	710-11-121	PAINTED PAVEMENT MARKING, STD, WHITE, SOLID, 6"	LF	2879	\$ 3.50	\$ 10,076.50
33	710-11-123	PAINTED PAVEMENT MARKING, STD, WHITE, SOLID, 12"	LF	40	\$ 3.50	\$ 140.00
35	710-11-125	PAINTED PAVEMENT MARKING, STD, WHITE, SOLID, 24"	LF	55	\$ 3.50	\$ 192.50
38	710-11-151	PAINTED PAVEMENT MARKING, STD, WHITE, DOTTED/GUIDELINE/ 6-10 GAP EXTENSION 6"	LF	70	\$ 3.50	\$ 245.00
40	710-11-170	PAINTED PAVEMENT MARKING, STD, WHITE, ARROWS	EA	2	\$ 35.00	\$ 70.00
42	710-11-221	PAINTED PAVEMENT MARKING, STD, YELLOW, SOLID, 6"	LF	2384	\$ 3.50	\$ 8,344.00
54	999-0000	UNSPECIFIED WORK	EA	9500	\$ 1.00	\$ 9,500.00
		Subtotal				\$ 101,372.99

Oleander - 100% ADA

Line No.	Pay Item No.	Description	Unit	Quantity	Unit Price	Amount
3	102-1074	CHANNELIZING DEVICE- PEDESTRIAN LCD (LONGITUDINAL CHANNELIZING DEVICE) FDOT 102-600	LF	200	\$ 1.00	\$ 200.00
5	102-1099	PORTABLE CHANGEABLE MESSAGE SIGN (PCMS)-TEMPORARY	EA/DAY	28	\$ 35.00	\$ 980.00
14	102-1600	SIGN, WORK ZONE, (Temporary)	EA/DAY	80	\$ 5.50	\$ 440.00
15	102-1602	FLAGGER - MOT per each flagger	HR	160	\$ 35.00	\$ 5,600.00
16	102-1651	CONES, (Temporary), per FDOT Index No. 102-600	EA/DAY	600	\$ 2.60	\$ 1,560.00
17	102-1652	BARRICADE, Type I, II or Drum, (Temporary), Per FDOT Index No. 102-600	EA/DAY	560	\$ 5.50	\$ 3,080.00
35	110-0100-0011	PAVEMENT, Concrete, Removal, sidewalk, driveways, pads 4" - 6" thick	SY	135	\$ 11.00	\$ 1,485.00
57	334-2095-105	SUPERPAVE ASPHALT CONCRETE, Type SP 9.5 or SP 12.5, Fine, Traffic Level C, Variable Thickness	TN	20	\$ 175.00	\$ 3,500.00
285	522-1006	SIDEWALK, CONCRETE, Reinforced, 6" Min. Thickness (includes driveways)	SY	135	\$ 85.00	\$ 11,475.00
287	522-3010	GRINDING, CONCRETE AND ASPHALT	SF	25	\$ 11.00	\$ 275.00
289	522-7000	SIDEWALK TEXTURIZING, Tactile Surface on Sidewalk Ramps	SF	280	\$ 40.00	\$ 11,200.00
309	575-0103	SODDING, Bahia, Includes clearing, grubbing, grading and compaction	SY	81	\$ 21.00	\$ 1,701.00
310	575-0112	SODDING, St. Augustine, Includes clearing, grubbing, grating, and compaction	SY	81	\$ 21.00	\$ 1,701.00
344	999-0000	UNSPECIFIED WORK	EA/DAY	3500	\$ 1.00	\$ 3,500.00
		Subtotal				\$ 46,697.00

Oleander - 50% ADA

Line No.	Pay Item No.	Description	Unit	Quantity	Unit Price	Amount
3	102-1074	CHANNELIZING DEVICE- PEDESTRIAN LCD (LONGITUDINAL CHANNELIZING DEVICE) FDOT 102-600	LF	100	\$ 1.00	\$ 100.00
5	102-1099	PORTABLE CHANGEABLE MESSAGE SIGN (PCMS)-TEMPORARY	EA/DAY	14	\$ 35.00	\$ 490.00
14	102-1600	SIGN, WORK ZONE, (Temporary)	EA/DAY	40	\$ 5.50	\$ 220.00
15	102-1602	FLAGGER - MOT per each flagger	HR	80	\$ 35.00	\$ 2,800.00
16	102-1651	CONES, (Temporary), per FDOT Index No. 102-600	EA/DAY	300	\$ 2.60	\$ 780.00
17	102-1652	BARRICADE, Type I, II or Drum, (Temporary), Per FDOT Index No. 102-600	EA/DAY	280	\$ 5.50	\$ 1,540.00
35	110-0100-0011	PAVEMENT, Concrete, Removal, sidewalk, driveways, pads 4" - 6" thick	SY	67	\$ 11.00	\$ 737.00
57	334-2095-105	SUPERPAVE ASPHALT CONCRETE, Type SP 9.5 or SP 12.5, Fine, Traffic Level C, Variable Thickness	TN	10	\$ 175.00	\$ 1,750.00
285	522-1006	SIDEWALK, CONCRETE, Reinforced, 6" Min. Thickness	SY	67	\$ 85.00	\$ 5,695.00
287	522-3010	GRINDING, CONCRETE AND ASPHALT	SF	20	\$ 11.00	\$ 220.00
289	522-7000	SIDEWALK TEXTURIZING, Tactile Surface on Sidewalk Ramps	SF	130	\$ 40.00	\$ 5,200.00

309	575-0103	SODDING, Bahia, Includes clearing, grubbing, grading and compaction	SY	40	\$ 21.00	\$ 840.00
310	575-0112	SODDING, St. Augustine, Includes clearing, grubbing, grating, and compaction	SY	40	\$ 21.00	\$ 840.00
344	999-0000	UNSPECIFIED WORK	EA/DAY	1700	\$ 1.00	\$ 1,700.00
Subtotal						\$ 22,912.00

Huffman Way - 100% Paving - Preferred Materials

Line No.	Pay Item No.	Description	Unit	Quantity	Unit Price	Amount
2	102-1099	SIGN, VARIABLE MESSAGE, 3 Lines, Temporary	DAY	28	\$ 2.00	\$ 56.00
7	334-2095-460	SUPERPAVE ASPHALT CONCRETE, Leveling Course, Type SP 9.5 or SP 12.5, Fine, Traffic Level C, Variable Thickness	TN	10	\$ 142.00	\$ 1,420.00
9	334-3125-000	SUPERPAVE ASPHALT CONCRETE, Type SP 12.5, Fine, Traffic Level C, Variable Thickness, Arterials/Collectors	TN	212	\$ 142.85	\$ 30,284.20
13	380-3490	MILLING EXISTING ASPHALT PAVEMENT, 2" Thickness or Less, Full Width	SY	1928	\$ 2.19	\$ 4,222.32
35	710-11-125	PAINTED PAVEMENT MARKING, STD, WHITE, SOLID, 24"	LF	12	\$ 3.50	\$ 42.00
54	999-0000	UNSPECIFIED WORK	EA	3600	\$ 1.00	\$ 3,600.00
Subtotal						\$ 39,624.52

Total \$ 259,782.58
 Construction Admin. & Inspection 5% \$ 12,989.13
Grand Total \$ 272,771.71