

ZON-22-10

Location Map

Zoning

From: R-A, Residential Agriculture

To: E-2, Employment 2



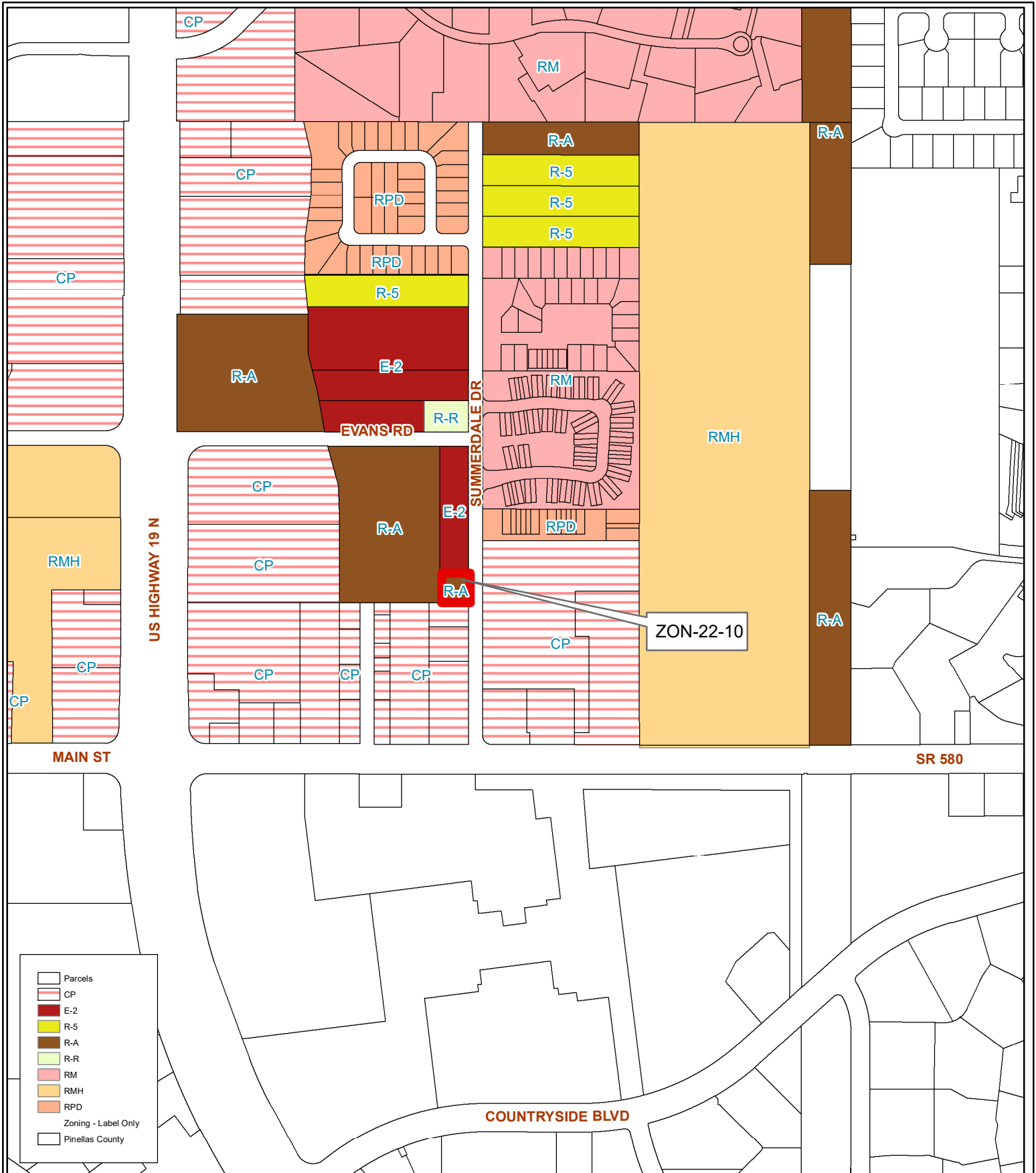
30/28/16/07236/000/0011

Prepared by: Housing & Community Development Department



Date: 12/14/2022

1 inch = 4.5 miles



ZON-22-10

Current Zoning

Zoning

From: R-A, Residential Agriculture

To: E-2, Employment 2



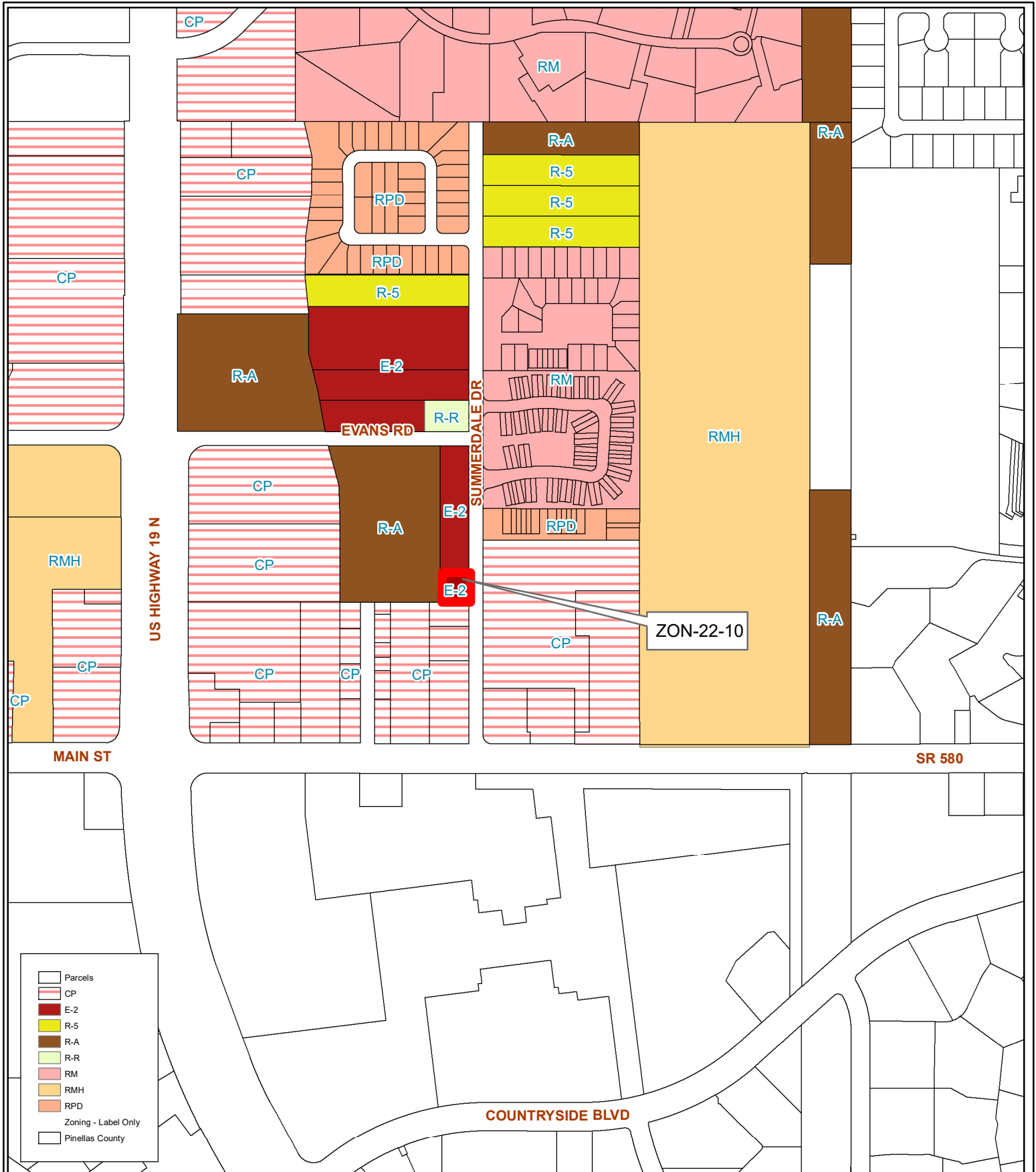
30/28/16/07236/000/0011

Prepared by: Housing & Community Development Department



Date: 12/14/2022

1 inch = 0.1 miles



- Parcels
- CP
- E-2
- R-5
- R-A
- R-R
- RM
- RMH
- RPD
- Zoning - Label Only
- Pinellas County

ZON-22-10

Proposed Zoning

Zoning

From: R-A, Residential Agriculture

To: E-2, Employment 2

30/28/16/07236/000/0011

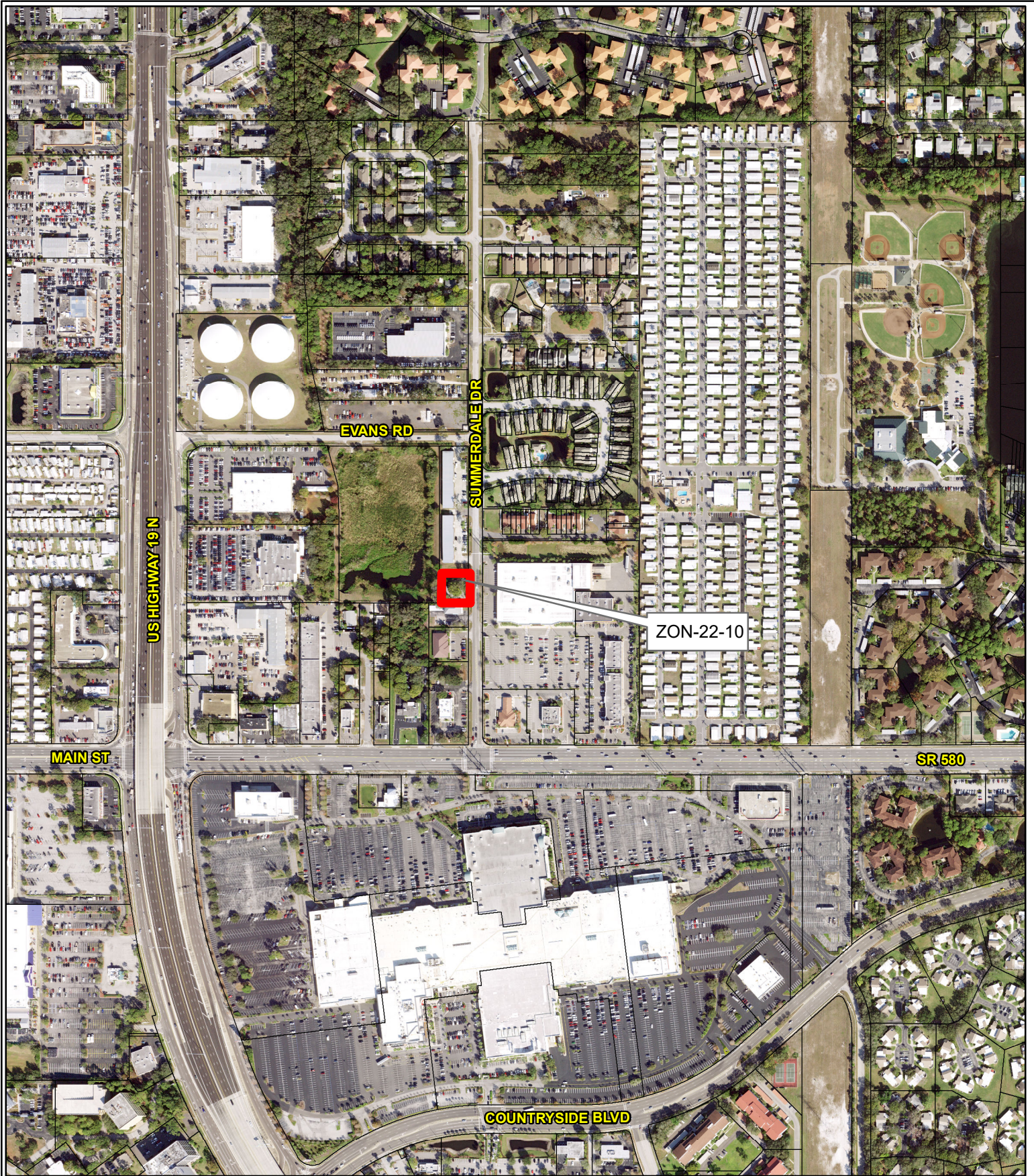
Prepared by: Housing & Community Development Department



Date: 12/14/2022



1 inch = 0.1 miles



ZON-22-10

Aerial Map

Zoning

From: R-A, Residential Agriculture

To: E-2, Employment 2

30/28/16/07236/000/0011

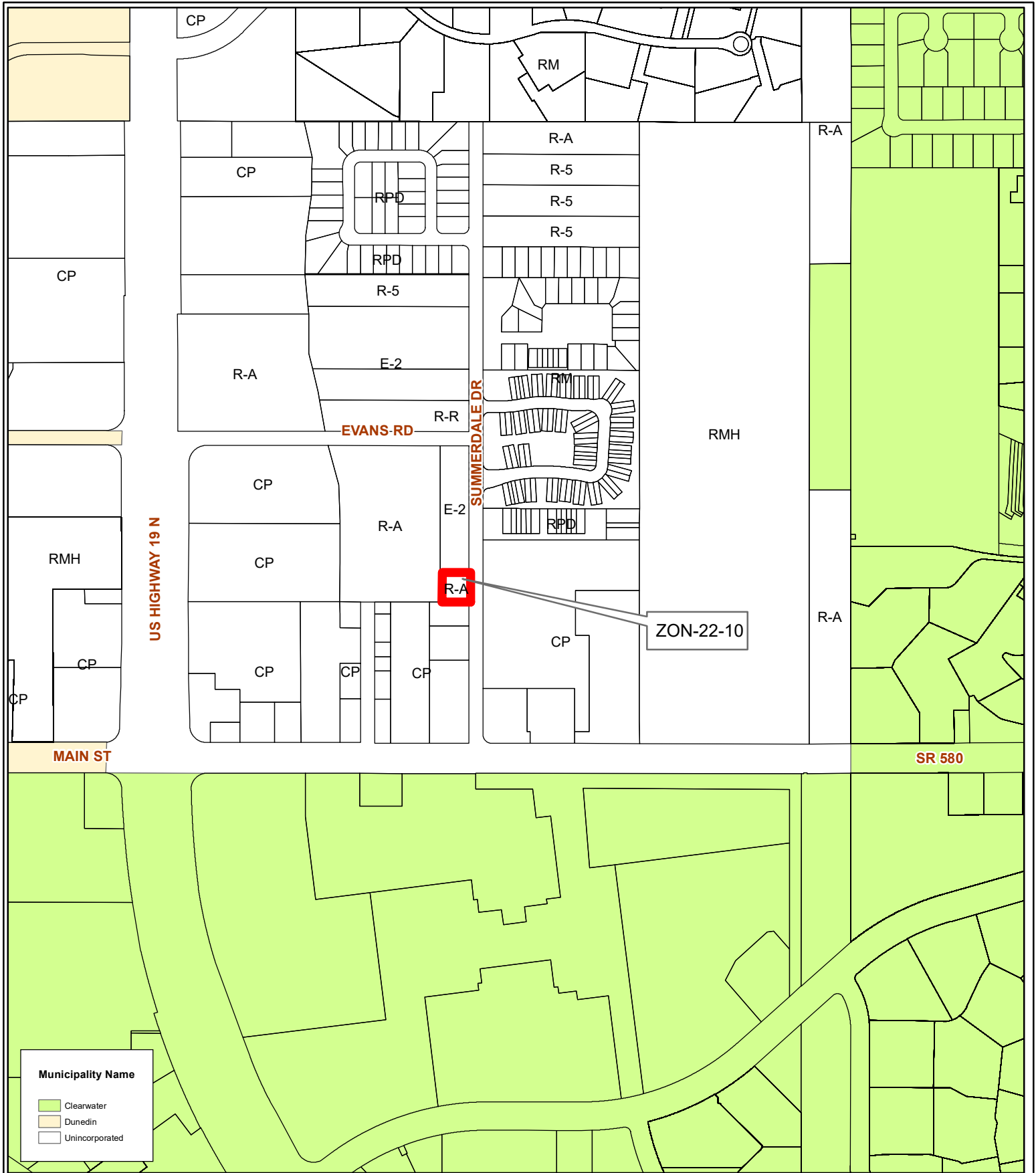
Prepared by: Housing & Community Development Department



Date: 12/14/2022



1 inch = 0.1 miles



Municipality Name

- Clearwater
- Dunedin
- Unincorporated

ZON-22-10
Municipality Map

Zoning
From: R-A, Residential Agriculture
To: E-2, Employment 2



30/28/16/07236/000/0011
 Prepared by: Housing & Community Development Department

NORTH

Date: 12/14/2022

1 inch = 0.1 miles