

ZON-23-04

Location Map

Zoning

From: E-2, Employment-2 and C-2, General Retail & Services

To: C-2, General Commercial & Services and C-2-C-T General Retail & Services-Transient Accommodation Overlay

Development Agreement allowing for a hotel (see staff report for details).



03/30/16/70884/300/1402, 1403, & 34/29/16/00110/000/0000

Prepared by: Housing & Community Development Department



Date: 5/19/2023

1 inch = 4.5 miles



ZON-23-04

Aerial Map

Zoning
From: E-2, Employment-2 and C-2, General Retail & Services
To: C-2, General Commercial & Services and C-2-C-T General Retail & Services-Transient Accommodation Overlay
 Development Agreement allowing for a hotel (see staff report for details).



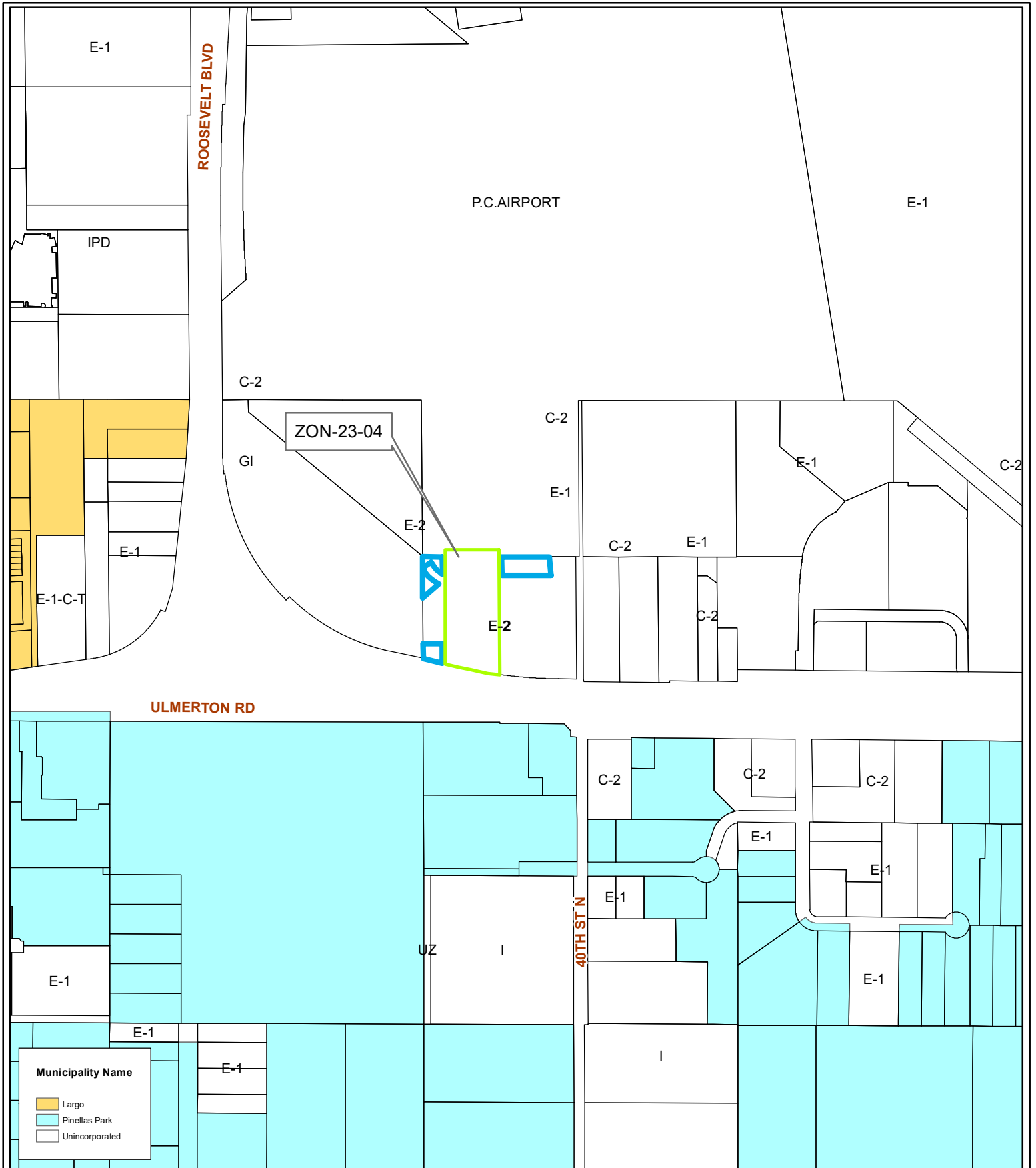
03/30/16/70884/300/1402, 1403, & 34/29/16/00110/000/0000

Prepared by: Housing & Community Development Department



Date: 5/19/2023

1 inch = 0.1 miles



ZON-23-04

Municipal Map

Zoning
From: E-2, Employment-2 and C-2, General Retail & Services
To: C-2, General Commercial & Services and C-2-C-T General Retail & Services-Transient Accomodation Overlay
 Development Agreement allowing for a hotel (see staff report for details).



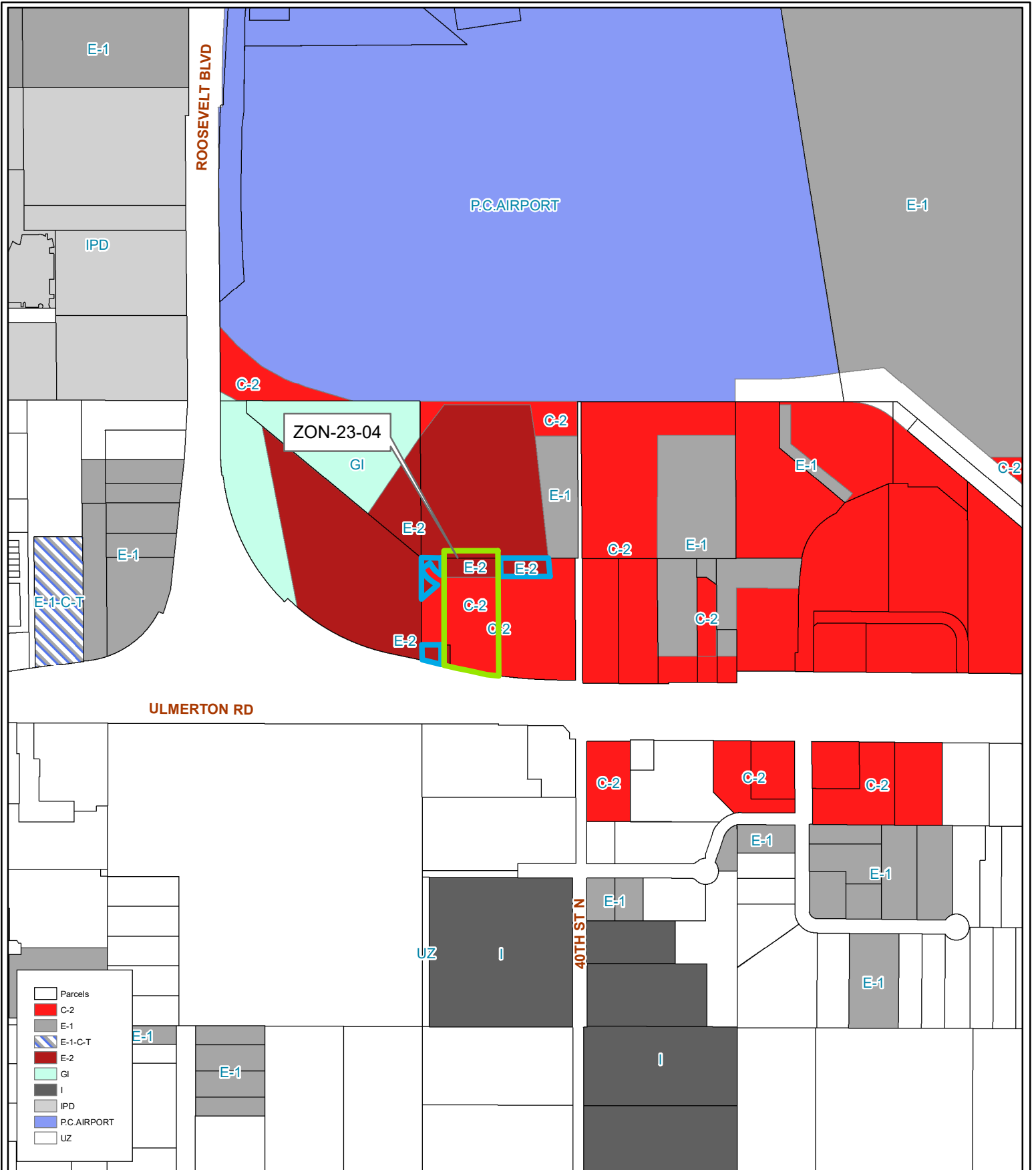
03/30/16/70884/300/1402, 1403, & 34/29/16/00110/000/0000

Prepared by: Housing & Community Development Department



Date: 5/19/2023

1 inch = 0.1 miles



ZON-23-04

Current Zoning

Zoning
From: E-2, Employment-2 and C-2, General Retail & Services
To: C-2, General Commercial & Services and C-2-C-T General Retail & Services-Transient Accomodation Overlay
 Development Agreement allowing for a hotel (see staff report for details).



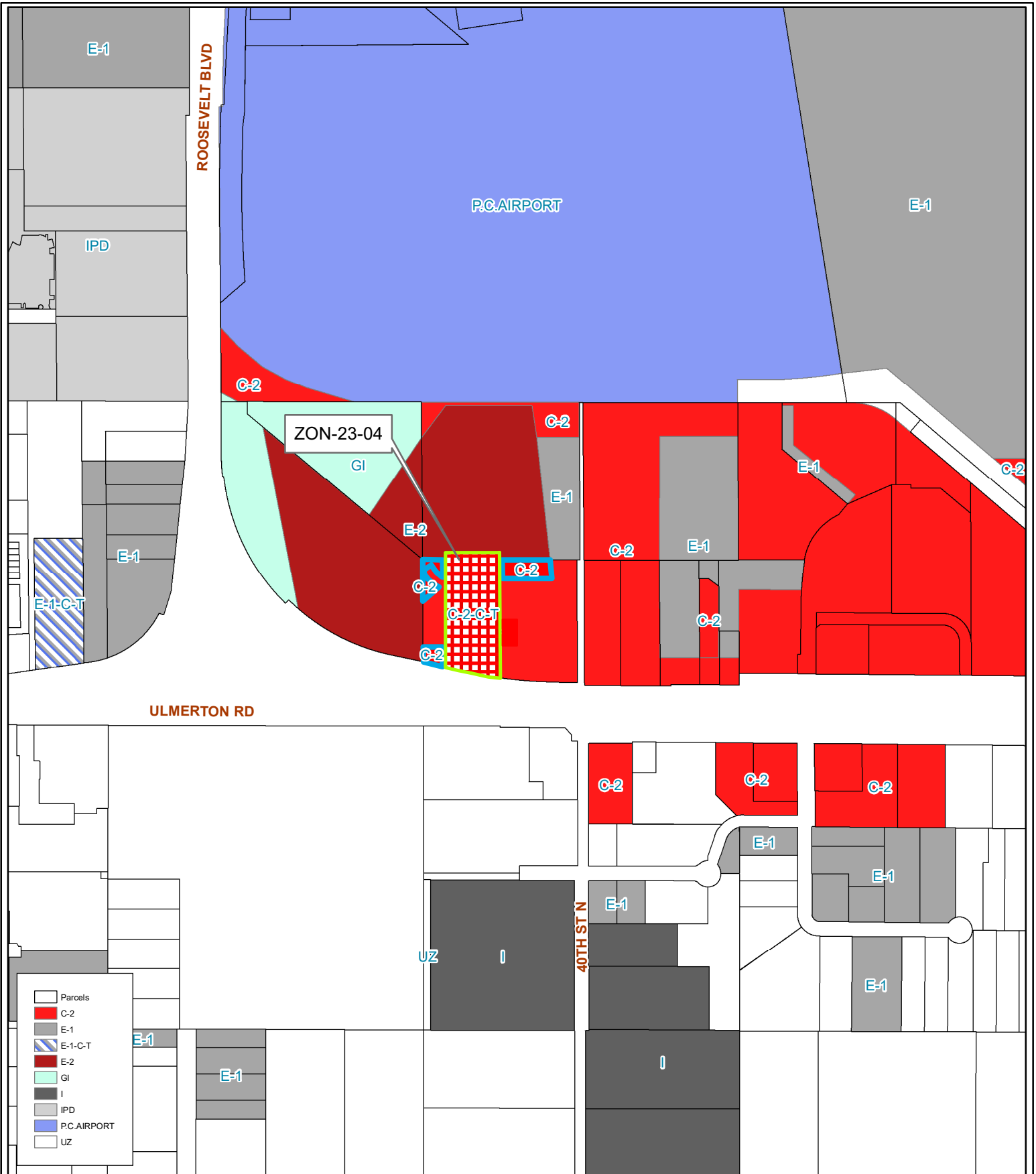
03/30/16/70884/300/1402, 1403, & 34/29/16/00110/000/0000

Prepared by: Housing & Community Development Department



Date: 5/19/2023

1 inch = 0.1 miles



ZON-23-04
Proposed Zoning

Zoning
From: E-2, Employment-2 and C-2, General Retail & Services
To: C-2, General Commercial & Services and C-2-C-T General Retail & Services-Transient Accomodation Overlay
 Development Agreement allowing for a hotel (see staff report for details).



03/30/16/70884/300/1402, 1403, & 34/29/16/00110/000/0000

Prepared by: Housing & Community Development Department



Date: 5/19/2023

1 inch = 0.1 miles