

Map 1 - Location

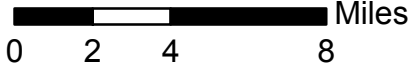
CASE #: CW19-09

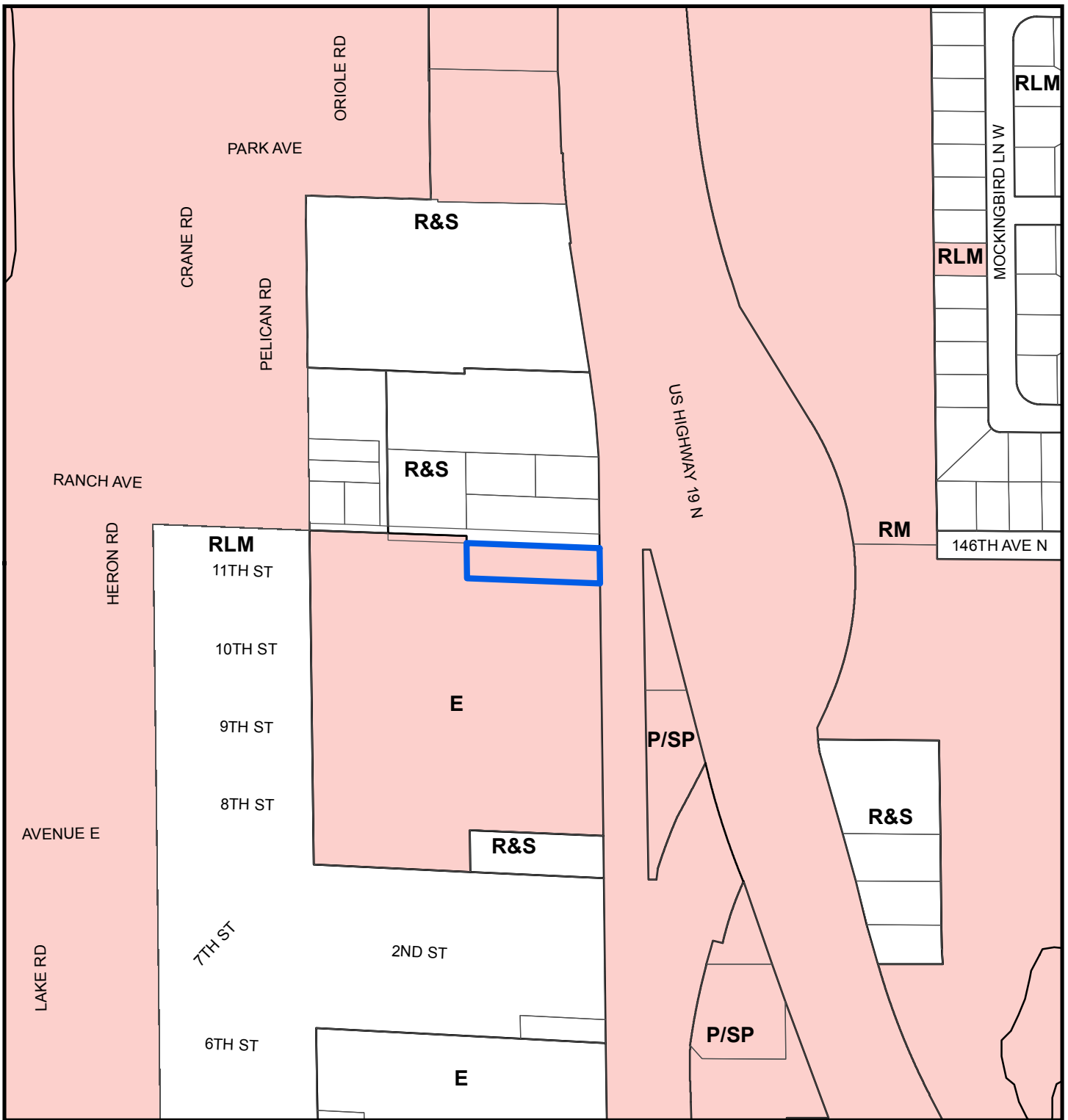
FROM: Retail & Services

AREA: 0.49 Acres

JURISDICTION: Largo

TO: Employment





Map 2 - Current Countywide Plan Map & Jurisdictional Map

CASE #: CW19-09

FROM: Retail & Services

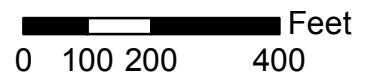
AREA: 0.49 Acres

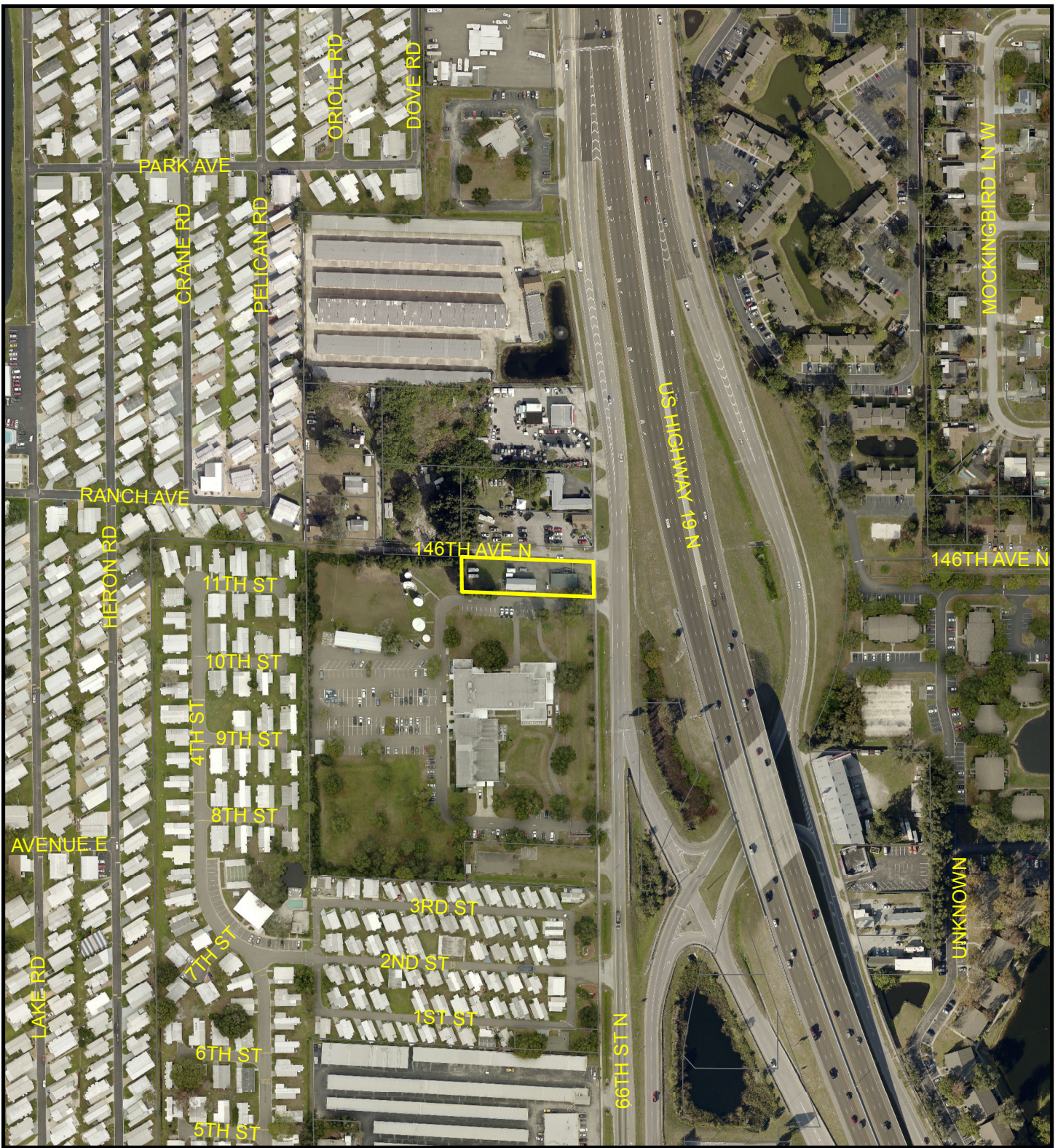
JURISDICTION: Largo

TO: Employment

LEGEND:

- Largo
- Unincorporated





Map 3 - Aerial

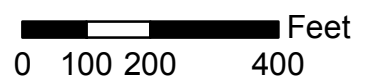
CASE #: CW19-09

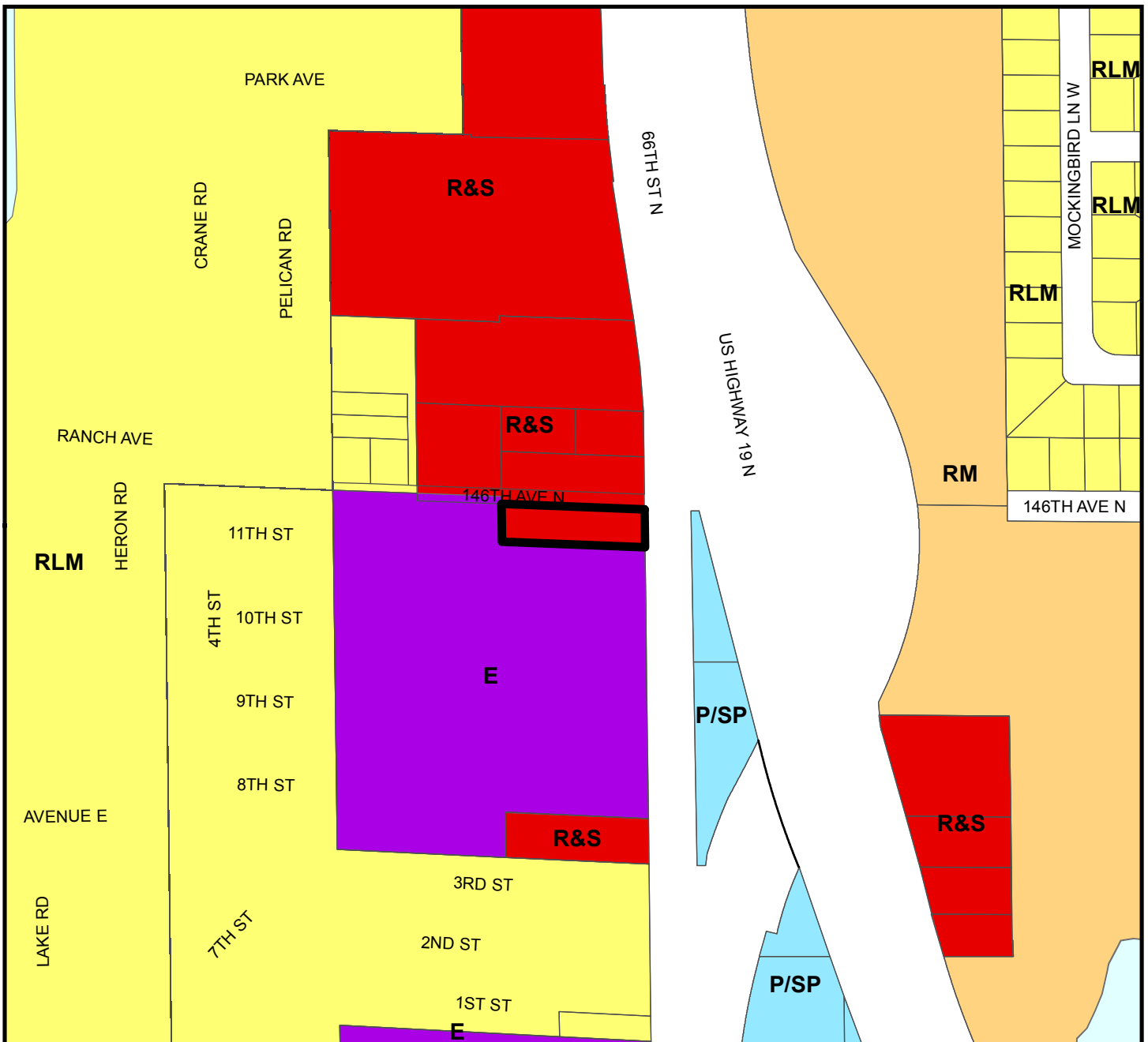
FROM: Retail & Services

AREA: 0.49 Acres

JURISDICTION: Largo

TO: Employment





Countywide Plan Map Categories

- Residential Low Medium
- Residential Medium
- Retail & Services
- Employment
- Public/Semi-Public

Map 4 - Current Countywide Plan Map

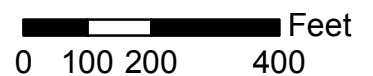
CASE #: CW19-09

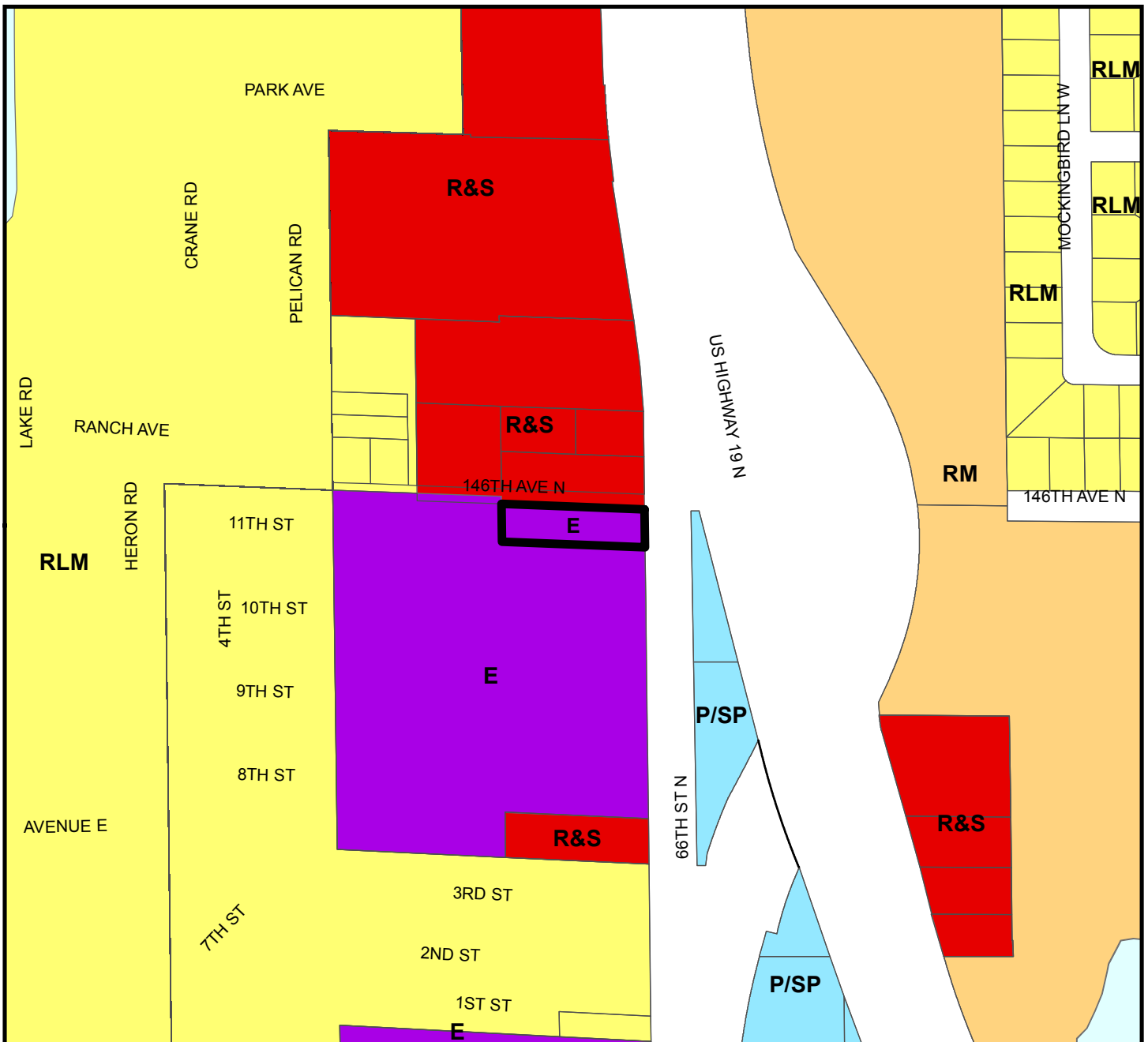
FROM: Retail & Services

AREA: 0.49 Acres

JURISDICTION: Largo

TO: Employment





Countywide Plan Map Categories

- | | | |
|--|---|--|
|  Residential Low Medium |  Retail & Services |  Public/Semi-Public |
|  Residential Medium |  Employment | |

Map 5 - Proposed Countywide Plan Map

CASE #: CW19-09

FROM: Retail & Services

AREA: 0.49 Acres

JURISDICTION: Largo

TO: Employment

