

Map 1 - Location

CASE #: CW18-10

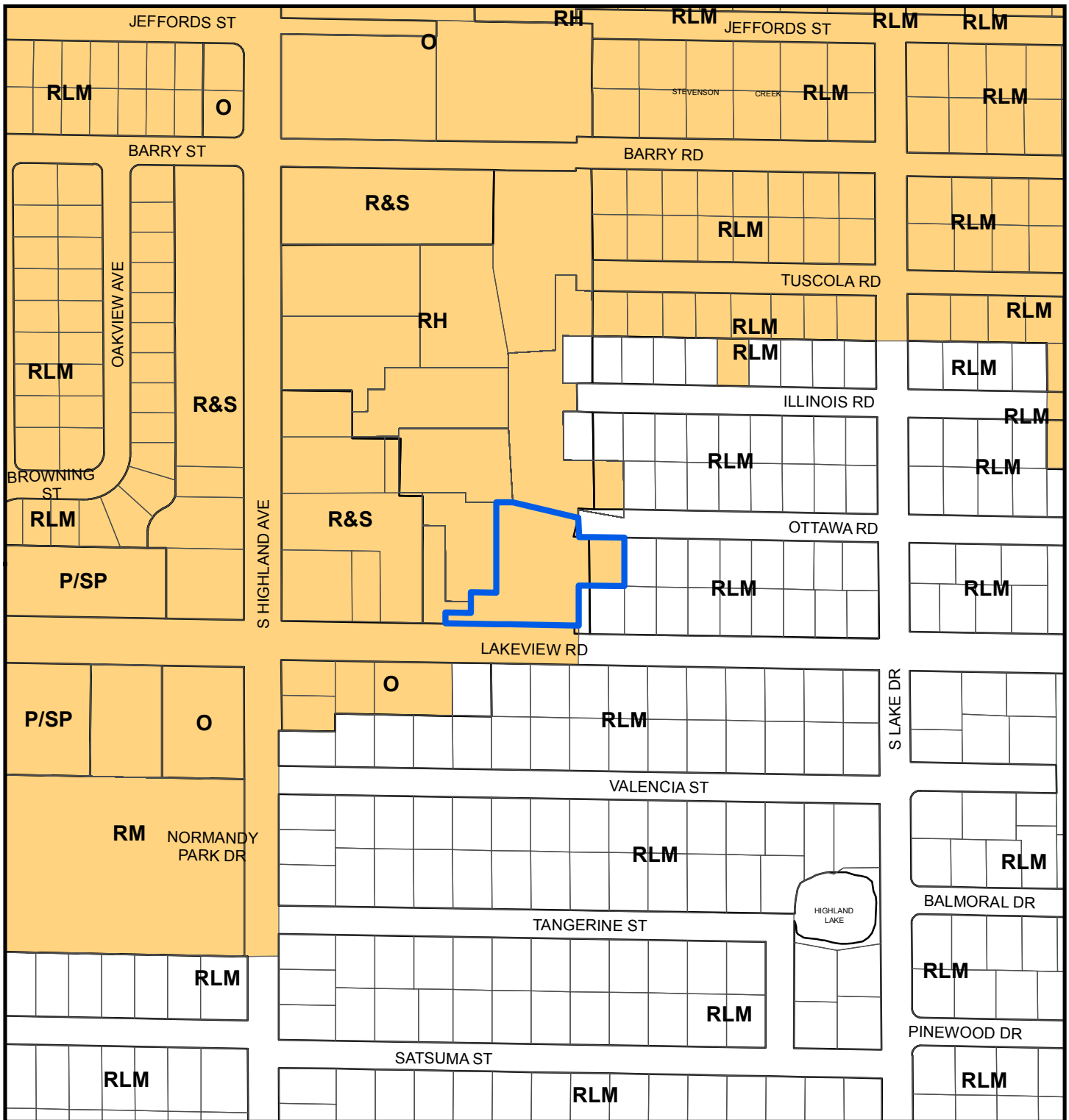
FROM: Residential Low Medium & Residential High

AREA: 1.3 Acres

JURISDICTION: Clearwater

TO: Office





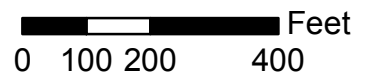
Map 2 - Current Countywide Plan Map & Jurisdictional Map

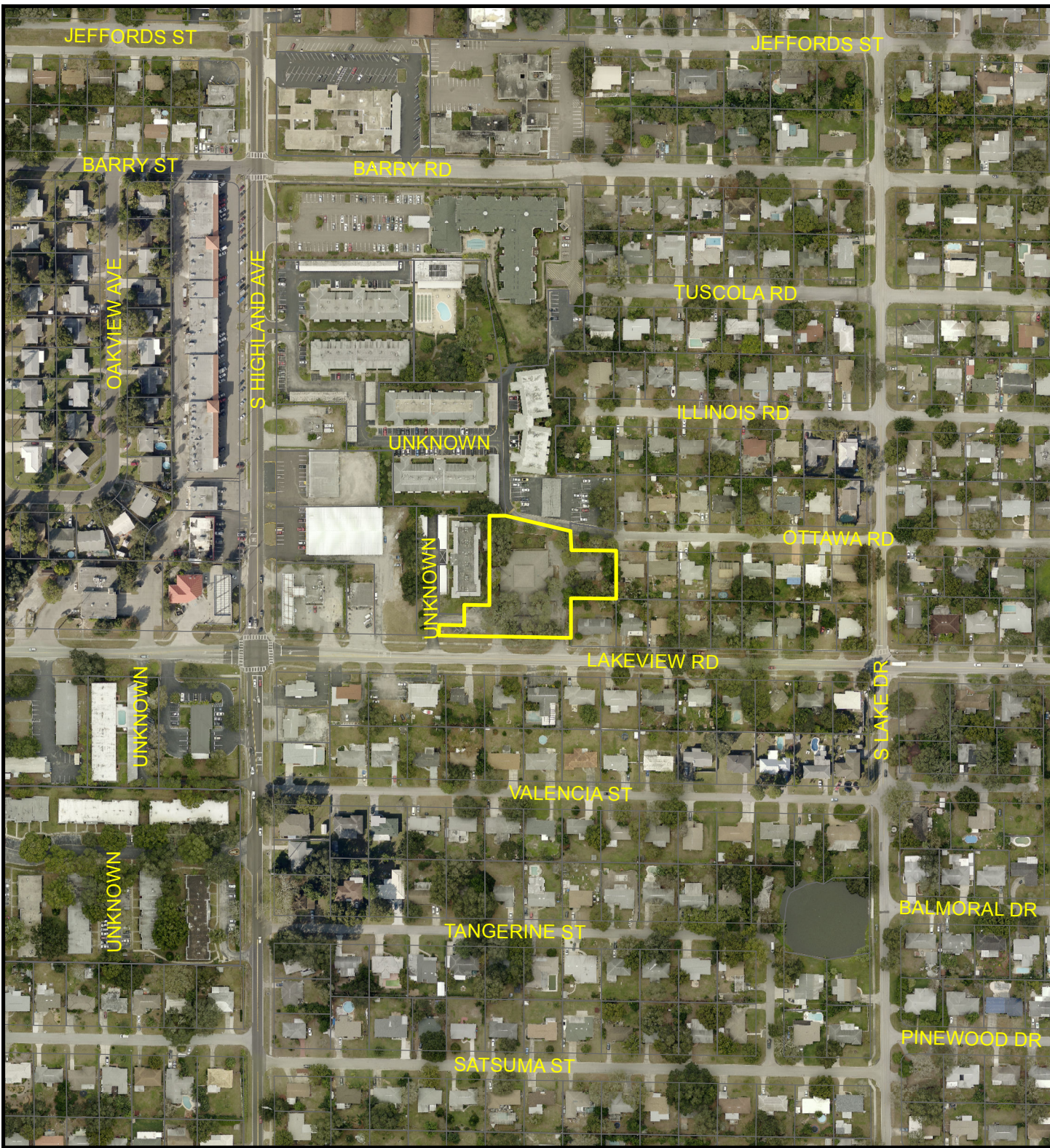
CASE #: CW18-10 **FROM:** Residential Low Medium & Residential High **AREA:** 1.3 Acres

JURISDICTION: Clearwater **TO:** Office

LEGEND:

- Clearwater
- Unincorporated

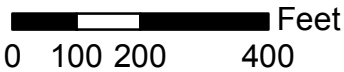


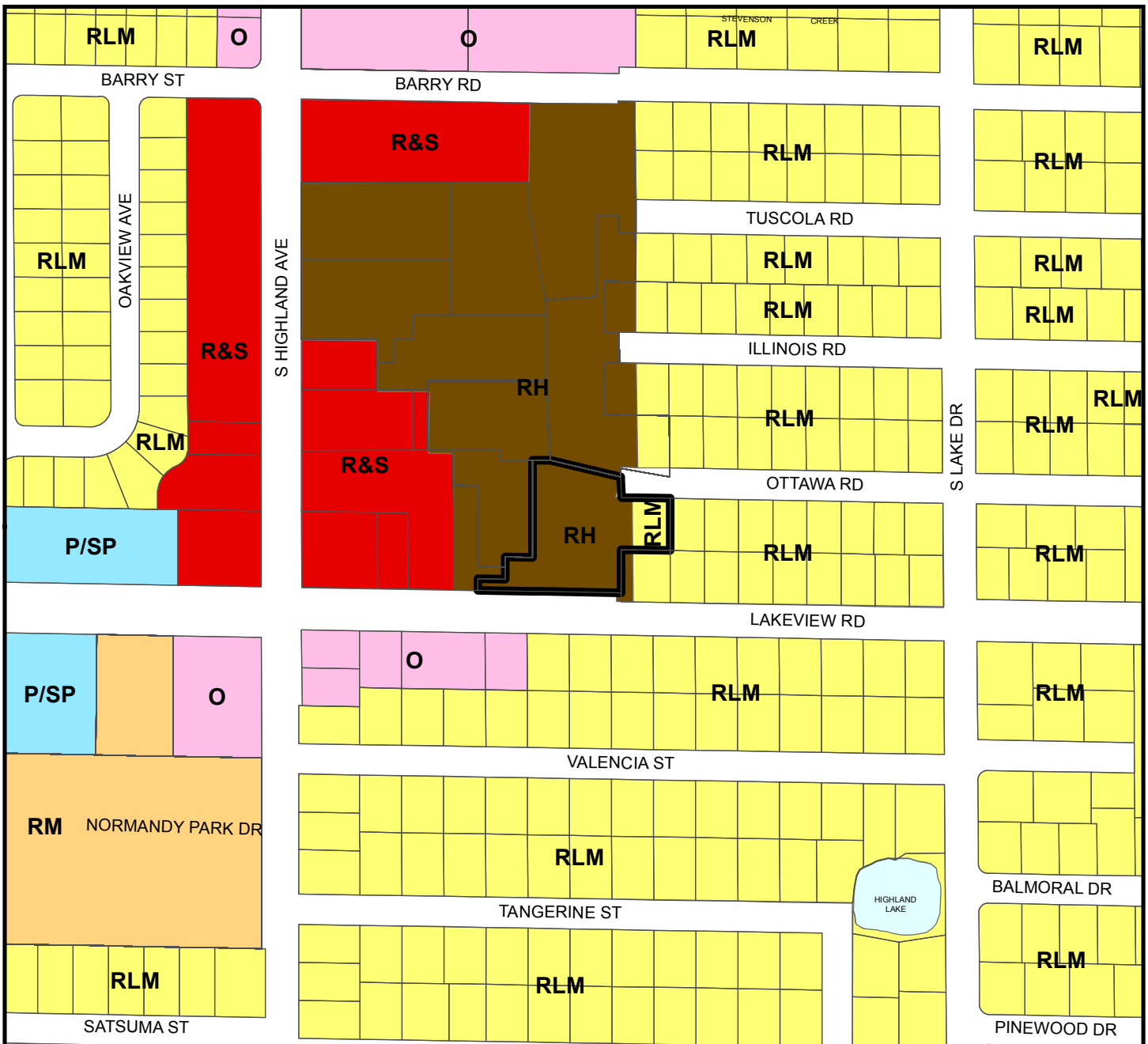


Map 3 - Aerial

CASE #: CW18-10 **FROM:** Residential Low Medium & Residential High **AREA:** 1.3 Acres

JURISDICTION: Clearwater **TO:** Office





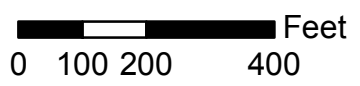
Countywide Plan Map Categories

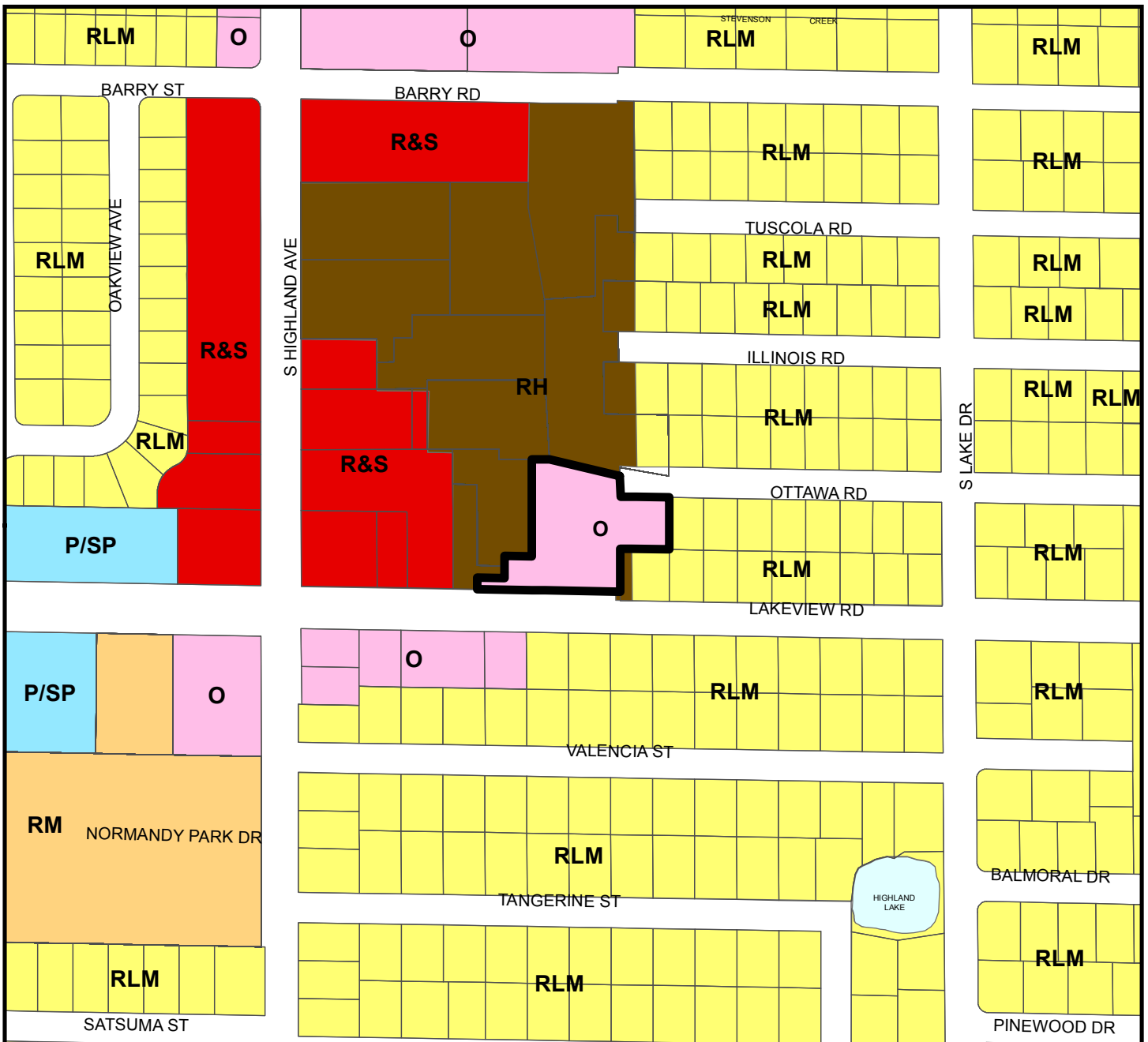
- Residential Low Medium
- Office
- Residential Medium
- Retail & Services
- Residential High
- Public/Semi-Public

Map 4 - Current Countywide Plan Map

CASE #: CW18-10 **FROM:** Residential Low Medium & Residential High **AREA:** 1.3 Acres

JURISDICTION: Clearwater **TO:** Office





Countywide Plan Map Categories

- | | | | |
|---|------------------------|---|--------------------|
|  | Residential Low Medium |  | Office |
|  | Residential Medium |  | Retail & Services |
|  | Residential High |  | Public/Semi-Public |

Map 5 - Proposed Countywide Plan Map

CASE #: CW18-10 FROM: Residential Low Medium & Residential High AREA: 1.3 Acres

JURISDICTION: Clearwater TO: Office

