

**ZON-24-01**

Location Map

**From:** R-4, One, Two, and Three-Family Residential  
**Land Use**  
**To:** C-2, General Commercial and Services



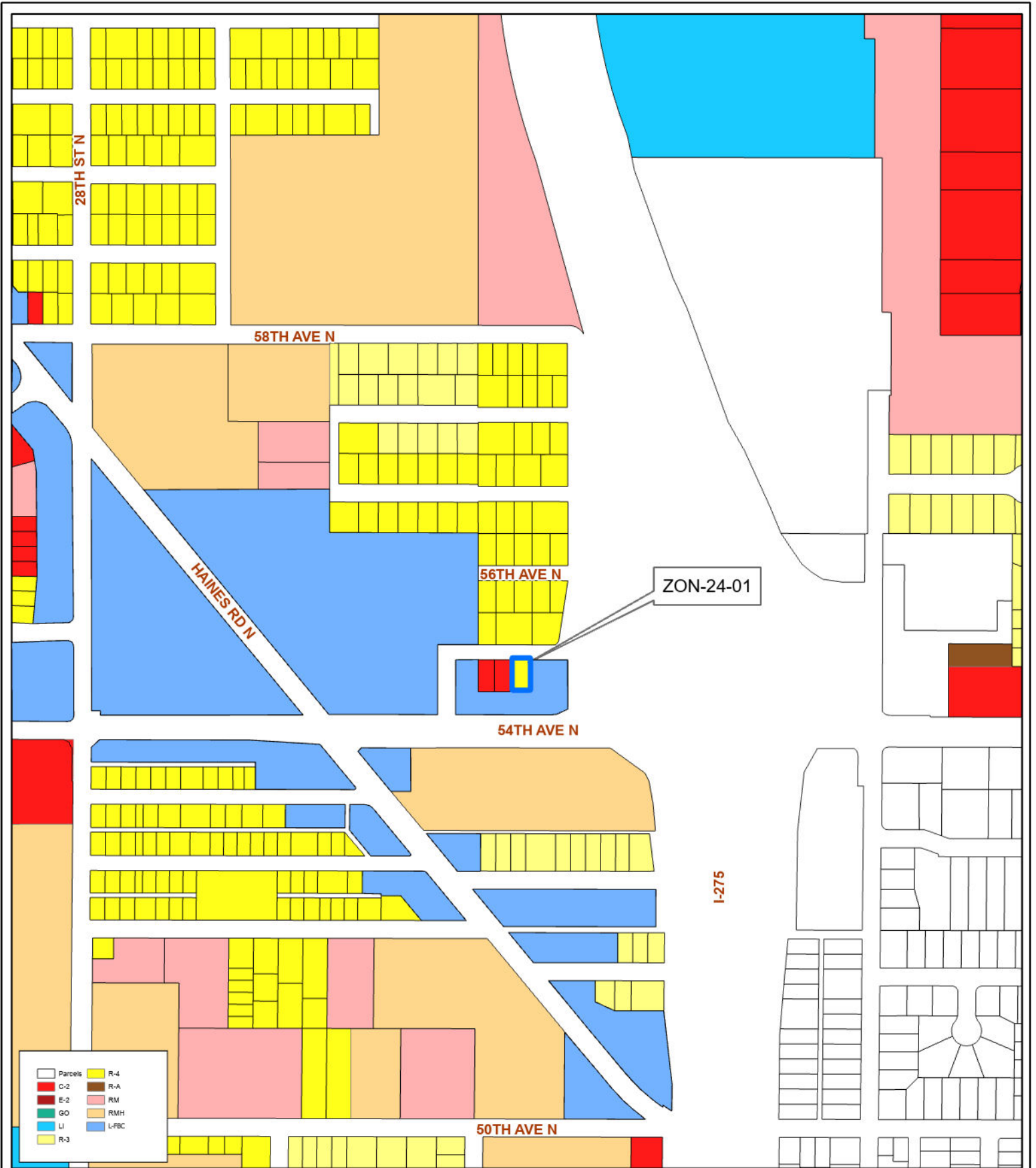
35/30/16/74340/009/0030

Prepared by: Housing & Community Development Department



Date: 4/16/2024

1:285,000



**ZON-24-01**

Current Zoning

**From:** R-4, One, Two, and Three-Family Residential  
**Land Use**  
**To:** C-2, General Commercial and Services



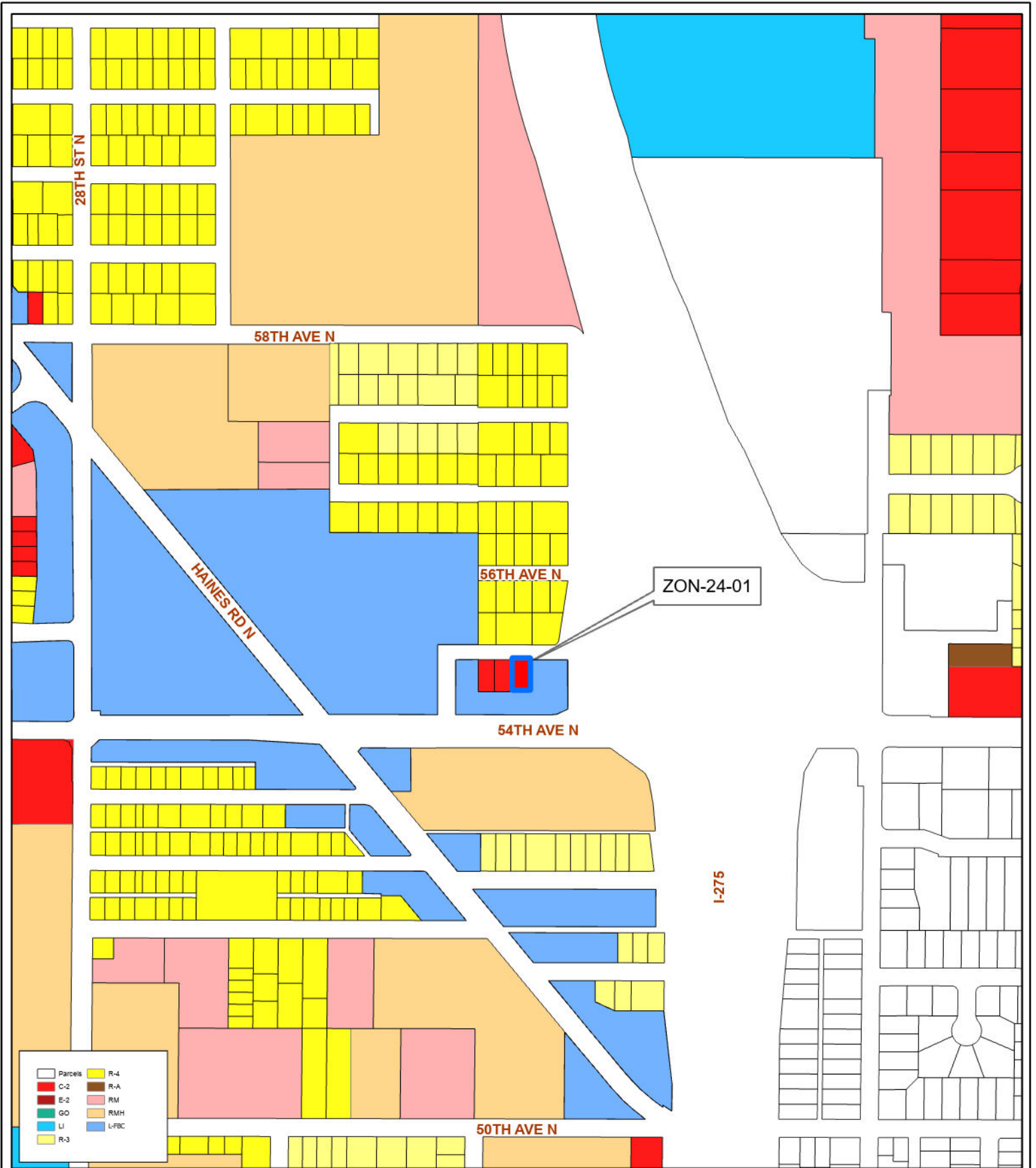
35/30/16/74340/009/0030

Prepared by: Housing & Community Development Department



Date: 4/16/2024

1:5,134



**ZON-24-01**

Proposed Zoning

**Land Use**  
 From: R-4, One, Two, and Three-Family Residential  
 To: C-2, General Commercial and Services



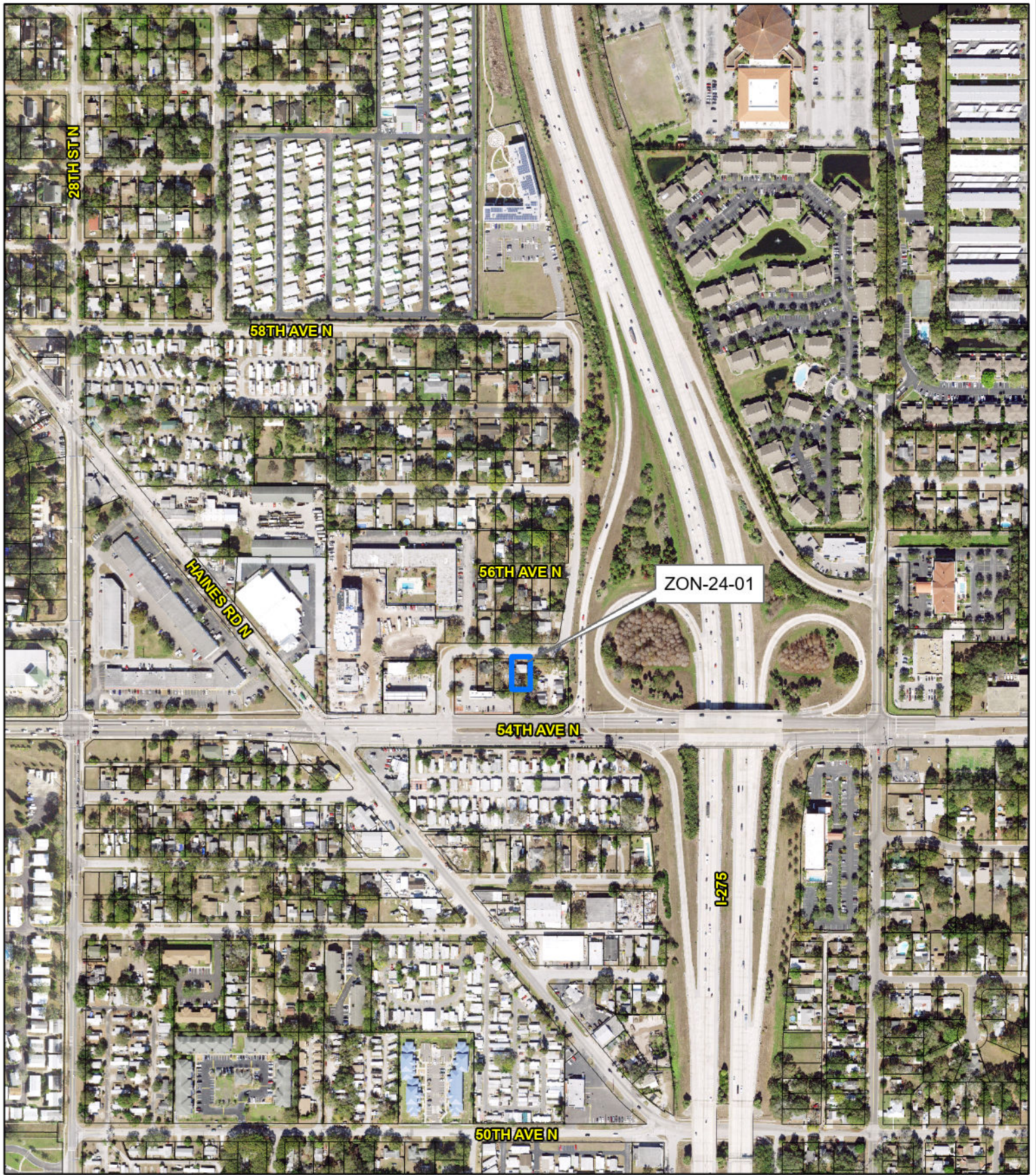
35/30/16/74340/009/0030

Prepared by: Housing & Community Development Department



Date: 4/16/2024

1:5,134



**ZON-24-01**

**Aerial Map**

**Land Use**  
**From:** R-4, One, Two, and Three-Family Residential  
**To:** C-2, General Commercial and Services



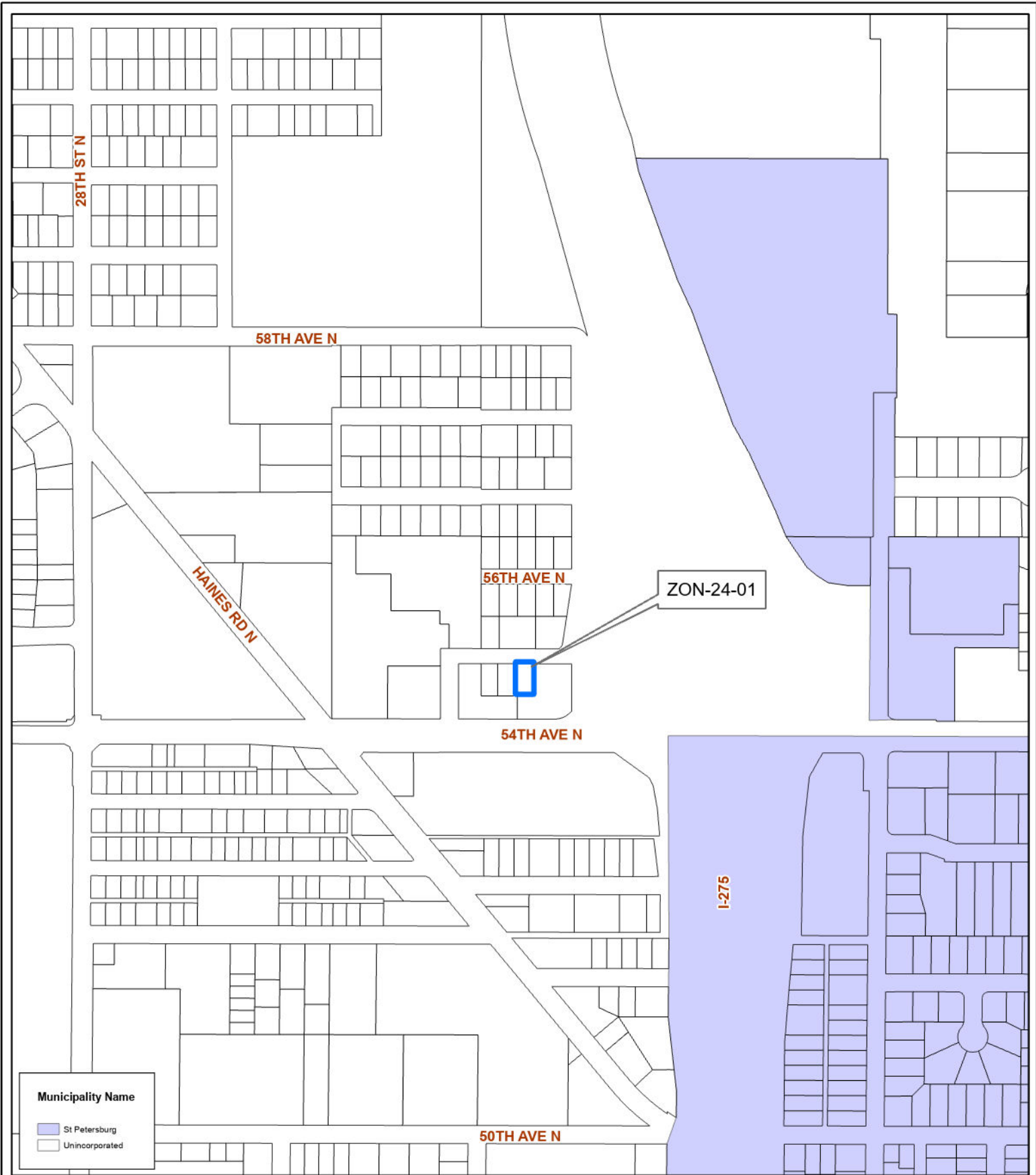
35/30/16/74340/009/0030

Prepared by: Housing & Community Development Department



Date: 4/16/2024

1:5,134



**Municipality Name**

- St Petersburg
- Unincorporated

**ZON-24-01**

**Municipal Map**

**Land Use**  
**From:** R-4, One, Two, and Three-Family Residential  
**To:** C-2, General Commercial and Services



35/30/16/74340/009/0030

Prepared by: Housing & Community Development Department



Date: 4/16/2024

1:5,134