

# Supervisor Of Elections

**Supervisor of Elections:** Julie Marcus  
**OMB Budget Analyst:** Belinda Amundson

## Department Purpose

The Supervisor of Elections (Supervisor) conducts Federal, State, County, and Municipal elections. The Supervisor registers voters and maintains accurate voter registration records using the Florida Voter Registration System (FVRS), in accordance with federal and state law. The Supervisor recruits, trains, and assigns poll workers, locates and contracts with polling places, and surveys polling places, to make improvements to comply with Americans with Disabilities Act (ADA) accessibility requirements. The Supervisor conducts voter registration and education for college, high school, middle and elementary students. The Supervisor provides sample ballots to voters as required by law. The Supervisor complies with bilingual requirements of Section 203 of the Voting Rights Act (VRA).

## **Elections:**

- Conduct Federal, State, County, and Municipal elections
- Qualify candidates for County, Special District, and Precinct Committeemen and Committeewomen elections
- Recruit, train, and assign poll workers
- Locate and contract with polling places
- Survey polling places to comply with ADA accessibility requirements
- Maintain voting equipment and supplies
- Comply with bilingual requirements of Section 203 of the Voting Rights Act

## **Voter Registration:**

- Register voters and maintain accurate voter registration records in accordance with the National Voter Registration Act (NVRA), Florida law, and the Florida Voter Registration System (FVRS)
- Comply with bilingual requirements of Section 203 of the Voting Rights Act

## **Voter Education:**

- Voter education, registration, and outreach for all citizens (including senior citizens, minority community groups, language community groups, persons with disabilities, and students of all grade levels)
- Provide sample ballots to voters as required by Florida law
- Comply with bilingual requirements of Section 203 of the Voting Rights Act

## Budget Summary

### 0001- General Fund

	FY23 Actual	FY24 Actual	FY25 Actual	FY26 Budget	FY27 Budget
Constitutional Officers Transfers	\$11,151,860	\$15,153,860	\$12,972,790	\$12,801,290	\$11,786,880
<b>Grand Total</b>	<b>\$11,151,860</b>	<b>\$15,153,860</b>	<b>\$12,972,790</b>	<b>\$12,801,290</b>	<b>\$11,786,880</b>
	FY23 Actual	FY24 Actual	FY25 Actual	FY26 Budget	FY27 Budget
FTE	48.0	52.0	52.0	52.0	52.0

## **Budget Drivers**

- The FY27 Budget for the Supervisor of Elections decreases \$1.014M (7.9%) to \$11.787M. The budget currently does not include any pay adjustments, benefits increases, or finalized cost plan figures.
- Personnel Services increases \$69,000 (1.0%) to \$6.934M. This is due to an increase in poll worker salaries and overtime pay for elections and early voting.  
The Department's FTE remains unchanged at 52.0.
- Operating Expenses decrease \$1.014M (17.6%) to \$4.745M. This is primarily due to: \$588,000 decrease in elections-related temporary services, Sheriff's Deputies for elections, and elections staffing support; \$388,000 for Printing & Binding for elections material such as ballots, envelopes, and brochures; and \$139,000 for elections-related Operating Supplies Expenditures.
- Capital Outlay decreases \$69,000 (39.1%) to \$108,000. This is primarily due to one-time expenditures of elections equipment and machinery purchased in FY26.

## **FY27 Decision Packages**

### **Ballot Inserter** (rank 1; \$1,591,750 non-recurring General Fund)

The existing ballot inserter has reached end-of-life and must be replaced to maintain reliable, compliant, and high-volume mail-ballot production. A modernized system would automate ballot kit assembly, reduce manual handling and errors, and improve turnaround times during peak election periods. This investment is expected to strengthen operational resilience while generating measurable savings through reduced labor and rework. This Decision Package is recommended by the County Administrator.

### **Canon Printer** (rank 2; \$55,000 non-recurring General Fund)

The request seeks a secondary, production-grade printer to add redundancy, improve reliability, and expand capabilities beyond the current aging, black-and-white-only equipment. A new color-capable system would enhance the clarity of voter-facing materials, reduce operational risk during peak production periods, and ensure continuity when equipment fails or workloads surge. Replacing underperforming devices is expected to improve consistency, reduce maintenance disruptions, and lower reliance on external vendors through more efficient in-house production. This Decision Package is recommended by the County Administrator.

### **Secure Equipment Transporters** (rank 3, \$200,000 non-recurring General Fund)

The request seeks secure transport carriers to protect sensitive election equipment and materials from tampering, damage, and environmental exposure while supporting standardized handling and chain-of-custody procedures. These carriers fulfill federal and state security obligations for safeguarding critical election infrastructure and ensure reliable, compliant transport and storage across all operational phases. This investment enhances security, compliance, and the dependable execution of election operations. This Decision Package is recommended by the County Administrator.

**Budget Summary by Program and Fund**

**Supervisor of Elections**

Elections include conducting Federal, State, County, and Municipal elections; qualifying candidates for County and Special District elections; recruiting, training, and assigning poll workers; locating and contracting with polling places; surveying polling places and making improvements to comply with ADA accessibility requirements; maintaining voting equipment and supplies; and complying with bilingual requirements of Section 203 of the Voting Rights Act.

Voter Registration includes registering voters and maintaining accurate voter registration records in accordance with the National Voter Registration Act (NVRA), Florida law, and the Florida Voter Registration System (FVRS) and complying with bilingual requirements of Section 203 of the Voting Rights Act. Voter Education includes education, registration, and outreach for all citizens (including senior citizens, minority community groups, language community groups, persons with disabilities, and students of all grade levels); providing sample ballots to voters; and complying with bilingual requirements of Section 203 of the Voting Rights Act.

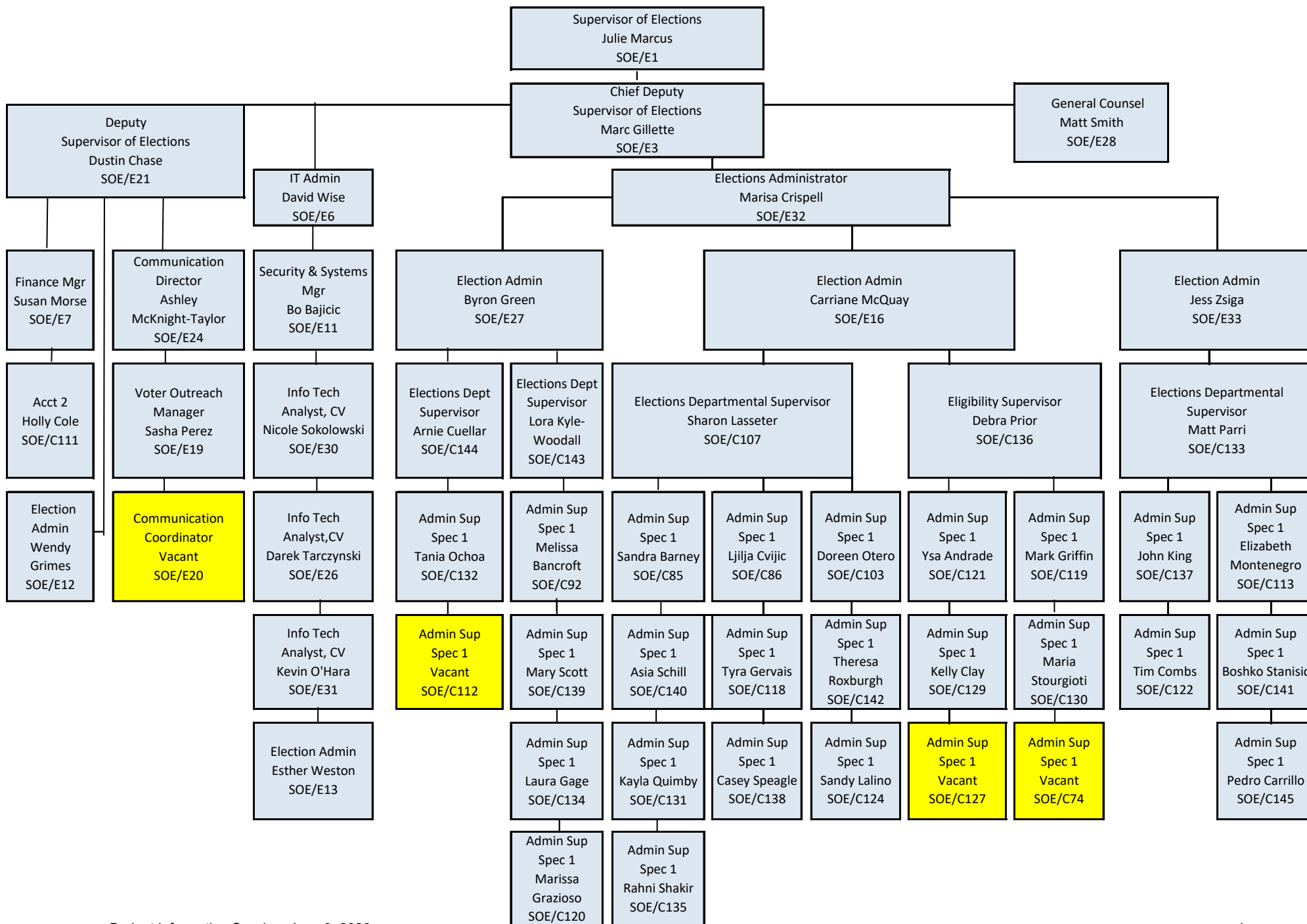
	<b>FY23 Actual</b>	<b>FY24 Actual</b>	<b>FY25 Actual</b>	<b>FY26 Budget</b>	<b>FY27 Budget</b>
General Fund	11,151,860	15,153,860	12,972,790	12,801,290	11,786,880
<b>Grand Total</b>	<b>11,151,860</b>	<b>15,153,860</b>	<b>12,972,790</b>	<b>12,801,290</b>	<b>11,786,880</b>

	<b>FY23 Actual</b>	<b>FY24 Actual</b>	<b>FY25 Actual</b>	<b>FY26 Budget</b>	<b>FY27 Budget</b>
FTE	48.0	52.0	52.0	52.0	52.0

**Attachments:**

- 1. Organizational Chart (p.4)
- 2. Budget Report By Fund - Expenditures (p. 5)
- 3. Decision Packages Report(s) (p.6-9)
- 4. Budget Submittal memo (p. 10)

# Pinellas County Supervisor of Elections - Organizational Chart



## Supervisor of Elections General Fund Expenditures

Account	FY23 Actual	FY24 Actual	FY25 Actual	FY23 - FY25 Average	FY26 Budget	FY25 Estimate	FY27 Request	FY27 vs. Average Change	FY27 vs. Average % Change	Budget to Budget Change	Budget to Budget % Change
5919971 - Trans To Soe-Personal Services	5,570,050	6,145,790	6,317,210	6,011,017	6,865,390	6,115,670	6,934,220	923,203	15.36%	68,830	1.00%
5919973 - Trans To Soe-Operating	4,463,070	5,851,010	4,849,580	5,054,553	5,758,810	6,295,750	4,744,790	(309,763)	-6.13%	(1,014,020)	-17.61%
5919976 - Trans To Soe-Capital	1,118,740	3,157,060	1,806,000	2,027,267	177,090	39,880	107,870	(1,919,397)	-94.68%	(69,220)	-39.09%
<b>Expenditures Total</b>	<b>11,151,860</b>	<b>15,153,860</b>	<b>12,972,790</b>		<b>12,801,290</b>	<b>12,451,300</b>	<b>11,786,880</b>			<b>(1,014,410)</b>	<b>-7.9%</b>

# Change Request Summary

Report data returned based on the user's security permissions.

Change Request	AUTO - 1858 - BlueCrest Ballot Inserter
Budget Year	2027
Change Request Type	Operating Decision Package Request
Change Request Stage	Department Request [Operating Decision Package Request]
Acct. Reference	
Publish Date	
Description (What is it) *	BlueCrest Ballot Inserter assembles ballot kits with automated postage for mailing.
Summary of Request	The existing ballot inserter has reached end-of-life in accordance with the manufacturer guidance and presents increasing operational risk. Replacement is required to maintain continuity of mail ballot production and to support an updated workflow that integrates ballot kit assembly with automated postage processing.
Justification *	<p>The inserter is a core component of high-volume mail ballot operations and directly impacts throughput, accuracy, and compliance. The proposed system improves operational efficiency by automating ballot kit assembly, reducing manual handling, and strengthening quality control across all outbound materials.</p> <p>Automation of this function reduces labor, minimizes error rates, and improves turnaround times during peak election cycles. Given the statutory timelines governing ballot processing and canvassing activities, maintaining reliable, scalable insertion capability is necessary to ensure timely distribution and downstream processing of ballots.</p> <p>This investment is expected to generate measurable savings through reduced labor costs, lower rework rates, and increased operational resilience during high-volume periods.</p>
Net Operating Budget	1,591,750
Net Capital Budget	-
Net Budget	1,591,750

## Operating Budget Details

Account	Description (What is it?)	2027 Budget
5919976-Trans To Soe-Capital		1,591,750
Total 970001 - Supervisor of Elections - BCC		1,591,750
Total Expenses		1,591,750
<b>Total</b>		<b>1,591,750</b>
<b>Net Total</b>		<b>1,591,750</b>

# Change Request Summary

Report data returned based on the user's security permissions.

Change Request: AUTO - 1859 - Canon Printer  
 Budget Year: 2027  
 Change Request Type: Operating Decision Package Request  
 Change Request Stage: Department Request [Operating Decision Package Request]  
 Acct. Reference:  
 Publish Date:  
 Description (What is it) \*: Canon printer to support ballot and in-house material printing.

Summary of Request: Request for a secondary, production-grade printer to support ballot and in-house material printing, including mailers, manuals, test decks, and instructional materials. The proposed solution includes color capability, addressing a current limitation of black-and-white-only output.

Justification \*: The current printing environment lacks reliable redundancy and is constrained by aging equipment. This creates operational risk during critical production windows and limits flexibility in meeting internal printing demands. A secondary printer will distribute workload, reduce downtime risk, and ensure continuity of operations during equipment failures or peak production periods. The addition of color capability enhances clarity and usability of voter-facing materials. Replacing underperforming equipment with a more reliable solution is expected to improve output consistency, reduce maintenance disruptions, and support more efficient in-house production—ultimately lowering reliance on external vendors and associated costs.

55,000  
 -  
 Net Operating Budget: 55,000  
 Net Capital Budget:  
 Net Budget:

## Operating Budget Details

Account	Description (What is it?)	2027 Budget
5919976-Trans To Soe-Capital		55,000
Total 970001 - Supervisor of Elections - BCC		55,000
Total Expenses		55,000
<b>Total</b>		<b>55,000</b>
<b>Net Total</b>		<b>55,000</b>

## Change Request Summary

Report data returned based on the user's security permissions.

Change Request	AUTO - 1860 - Secure Equipment Transporters
Budget Year	2027
Change Request Type	Operating Decision Package Request
Change Request Stage	Department Request [Operating Decision Package Request]
Acct. Reference	
Publish Date	
Description (What is it) *	Secure transport carriers to support the movement and storage of election equipment.
	Summary of Request
Summary of Request	<p>Request for secure transport carriers to support the movement and storage of election equipment, including electronic poll books and other mission critical materials, that is protected from public disclosure pursuant to Section 119.0725, Florida Statutes. These carriers are intended to protect sensitive assets from damage, tampering, and environmental exposure while enabling standardized handling and transport across all operational phases.</p> <p>Secure transport carriers are a core operational and compliance control for sensitive systems and information exempt from public disclosure under Section 119.0725, Florida Statutes, and protected security system information under Section 119.071(3), Florida Statutes.</p> <p>Election infrastructure was designated as critical infrastructure by the U.S. Department of Homeland Security in January 2017 under the Government Facilities Sector. Federal law, including the Critical Infrastructure Information Act of 2002 (6 U.S.C. §§ 131–134), supports the protection of sensitive infrastructure information, and Section 101.015, Florida Statutes, requires the Supervisor of Elections to ensure the security of voting systems, including protection against unauthorized access, tampering, or disruption. These combined federal and state requirements establish a clear obligation to implement appropriate physical safeguards for the transport and storage of election assets.</p> <p>Consistent with this framework, these assets require heightened physical safeguards during transport and storage. The proposed carriers reduce risk by protecting against tampering, loss, and environmental damage while reinforcing documented chain-of-custody procedures. Standardized transport methods improve operational consistency across sites, reduce handling variability, and minimize the likelihood of delays or failures during critical deployment windows.</p> <p>From a financial and risk management perspective, this investment reduces lifecycle costs by extending equipment usability, limiting repair and replacement expenses, and mitigating potential liability associated with compromised or damaged assets. It also strengthens audit defensibility and alignment with applicable state and federal security expectations.</p> <p>Overall, the carriers enhance operational reliability, protect sensitive infrastructure, and support the secure and consistent execution of election processes.</p>
	200,000
	-
	200,000
Net Operating Budget	
Net Capital Budget	
Net Budget	

# Change Request Summary


Report data returned based on the user's security permissions.

## Operating Budget Details

Account	Description (What is it?)	2027 Budget
5919976-Trans To Soe-Capital		200,000
Total 970001 - Supervisor of Elections - BCC		200,000
Total Expenses		200,000
<b>Total</b>		<b>200,000</b>
<b>Net Total</b>		<b>200,000</b>



**JULIE MARCUS**  
**PINELLAS COUNTY SUPERVISOR OF ELECTIONS**

TO: The Honorable Members of the Board of County Commissioners  
FROM: Julie Marcus, Supervisor of Elections   
DATE: April 30, 2026  
RE: FY27 Budget Proposal

Attached is our FY 2027 proposed budget, totaling \$13,633,648. This budget encompasses expenses related to voter registration initiatives, outreach programs and the upkeep of integrated physical and cybersecurity systems. It also includes the cost of conducting the Gubernatorial General Election, along with other obligations as specified by Florida law.

Included within this proposal is a decision package of \$1,846,780 to replace a mailing inserter and high-speed printers used in the assembly of mail ballot kits sent to voters who request mail ballots. This replacement reflects the planned end-of-life cycle for equipment procured with an eight-year life cycle. This investment updates a key part of our operation, strengthens mail ballot documentation, boosts efficiency, and keeps cutting operational costs.

The decision package also includes funding for secure transport carriers to support critical election infrastructure. This investment strengthens chain-of-custody protocols, aligns with heightened security expectations for election operations, and helps to ensure the safe and controlled transport of equipment throughout election cycles.

I look forward to presenting this budget to you and welcome any discussion or questions you may have. Your continued partnership remains essential as we maintain secure, transparent, accessible, and fiscally responsible elections for Pinellas County voters.

Please contact me if you have any questions.

Enclosures

Cc: Barry Burton, County Administrator  
Chris Rose, Director, Office of Management and Budget