

**ZON-25-03**

**Aerial Map**

**Zoning**

**From:** LI-W, Limited Institutional - Wellhead Protection Overlay

**To:** R-A-W, Residential Agriculture - Wellhead Protection Overlay

10/27/16/00000/430/0100

Prepared by: Housing & Community Development Department

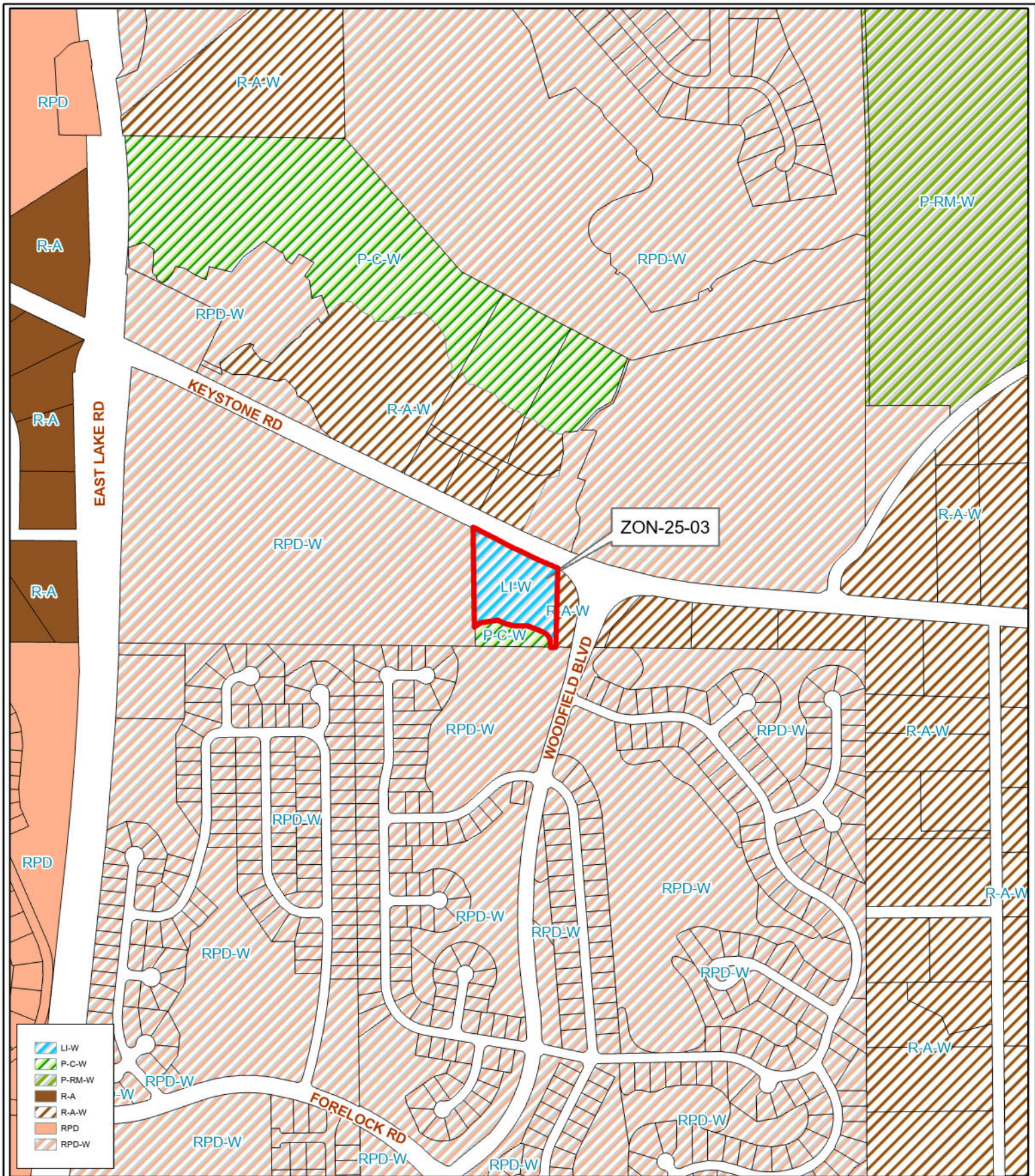


Date: 6/30/2025



1:285,000





**ZON-25-03**

**Current Zoning**

**Zoning**

**From:** LI-W, Limited Institutional - Wellhead Protection Overlay

**To:** R-A-W, Residential Agriculture - Wellhead Protection Overlay

10/27/16/00000/430/0100

Prepared by: Housing & Community Development Department

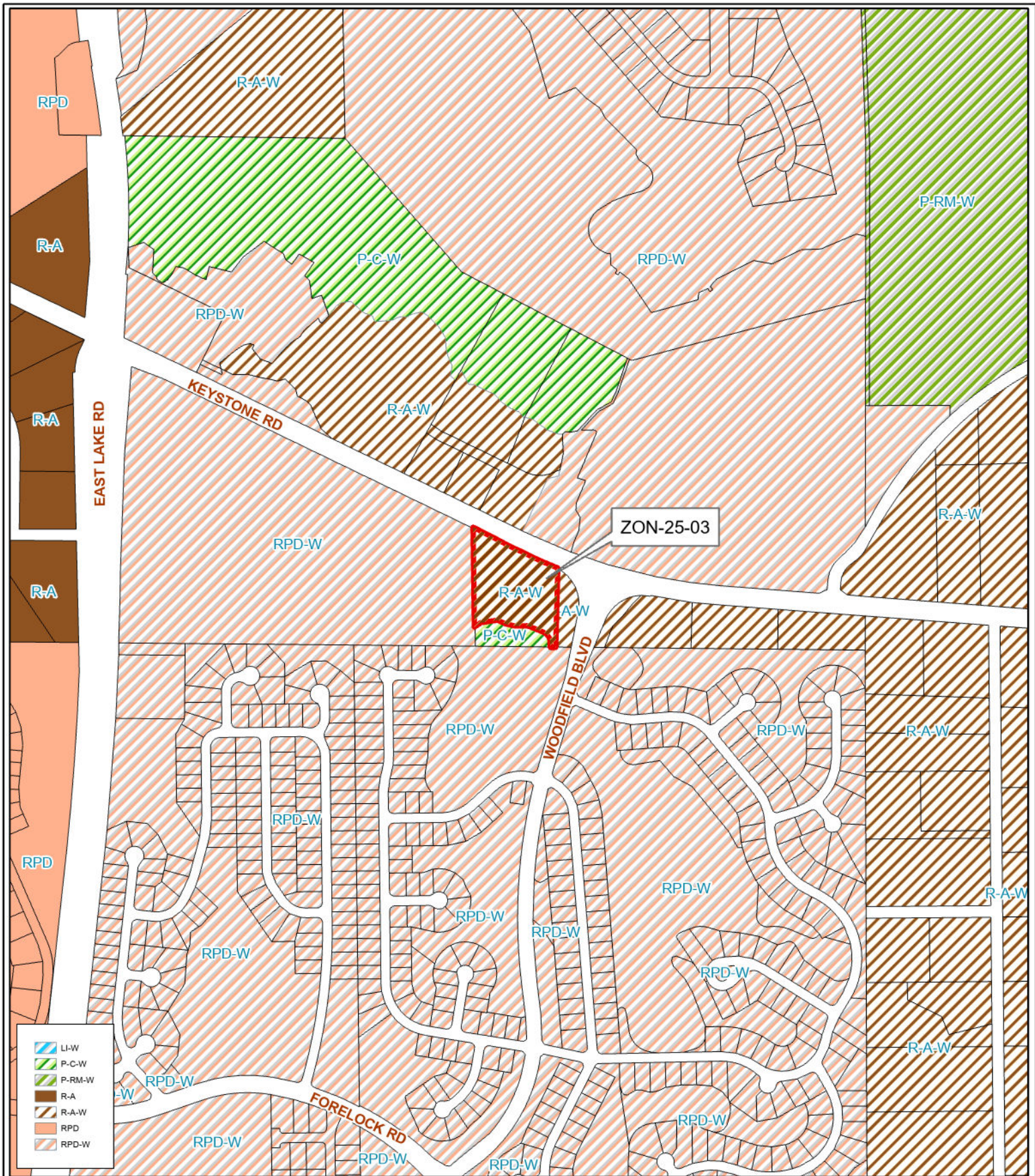


Date: 6/30/2025



1:8,022





**ZON-25-03**

**Proposed Zoning**

**Zoning**

**From:** LI-W, Limited Institutional - Wellhead Protection Overlay

**To:** R-A-W, Residential Agriculture - Wellhead Protection Overlay

10/27/16/00000/430/0100

Prepared by: Housing & Community Development Department



Date: 6/30/2025



1:8,022





**ZON-25-03**

**Municipal Map**

**Zoning**

**From:** LI-W, Limited Institutional - Wellhead Protection Overlay

**To:** R-A-W, Residential Agriculture - Wellhead Protection Overlay

10/27/16/00000/430/0100

Prepared by: Housing & Community Development Department

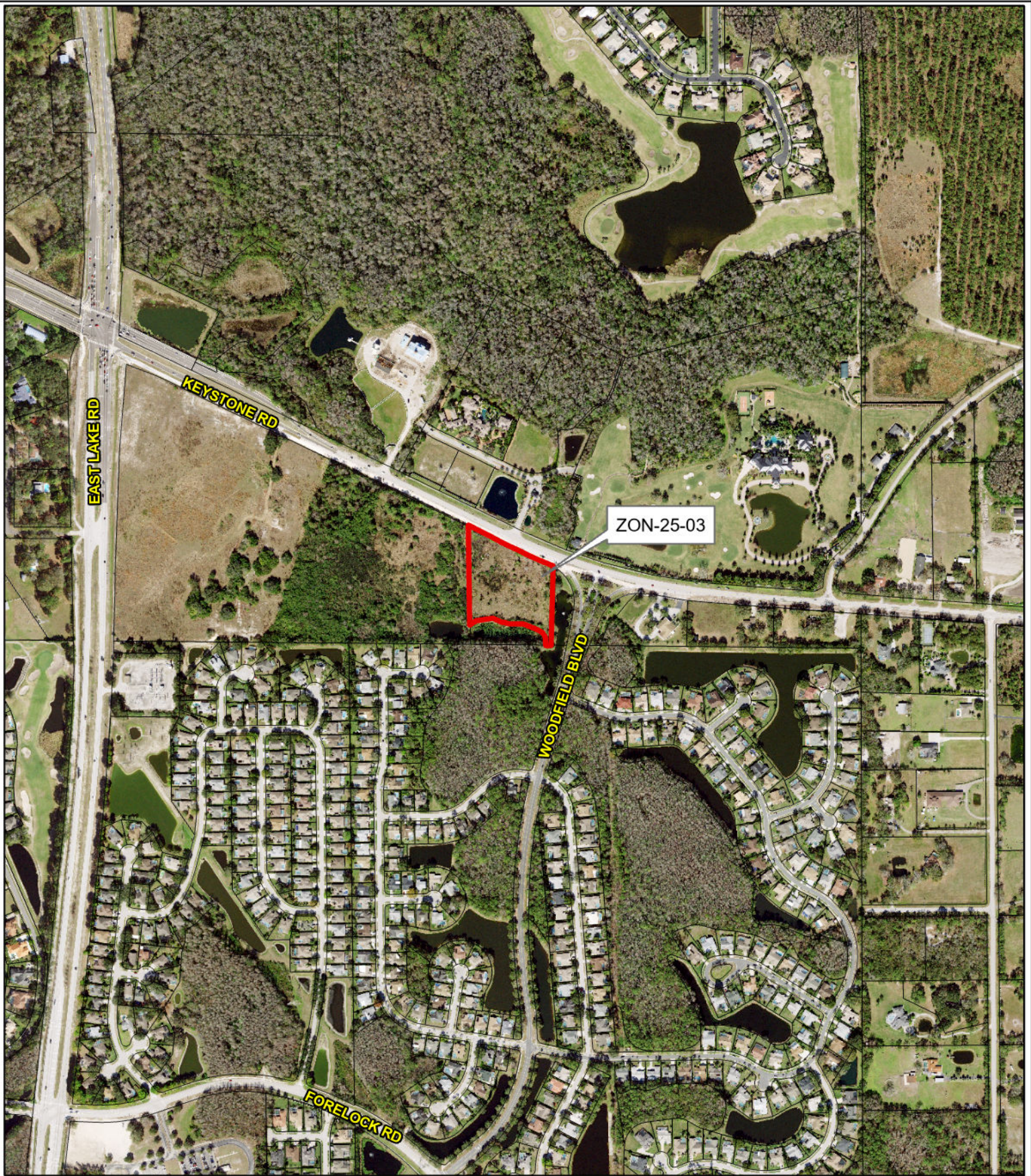


Date: 6/30/2025



1:8,022





**ZON-25-03**

**Aerial Map**

**Zoning**

From: LI-W, Limited Institutional - Wellhead Protection Overlay

To: R-A-W, Residential Agriculture - Wellhead Protection Overlay

10/27/16/00000/430/0100

Prepared by: Housing & Community Development Department



Date: 6/30/2025



1:8,022