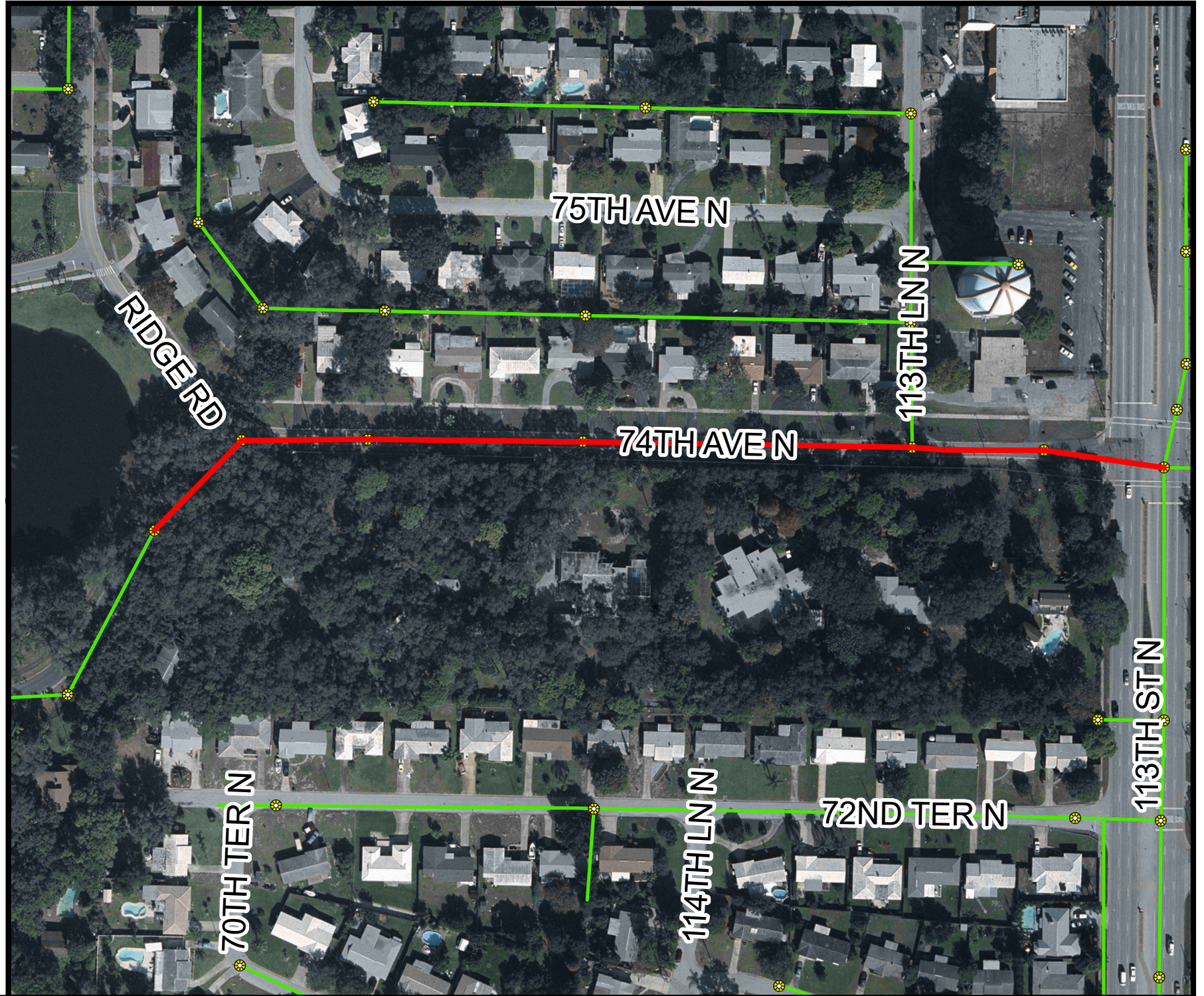
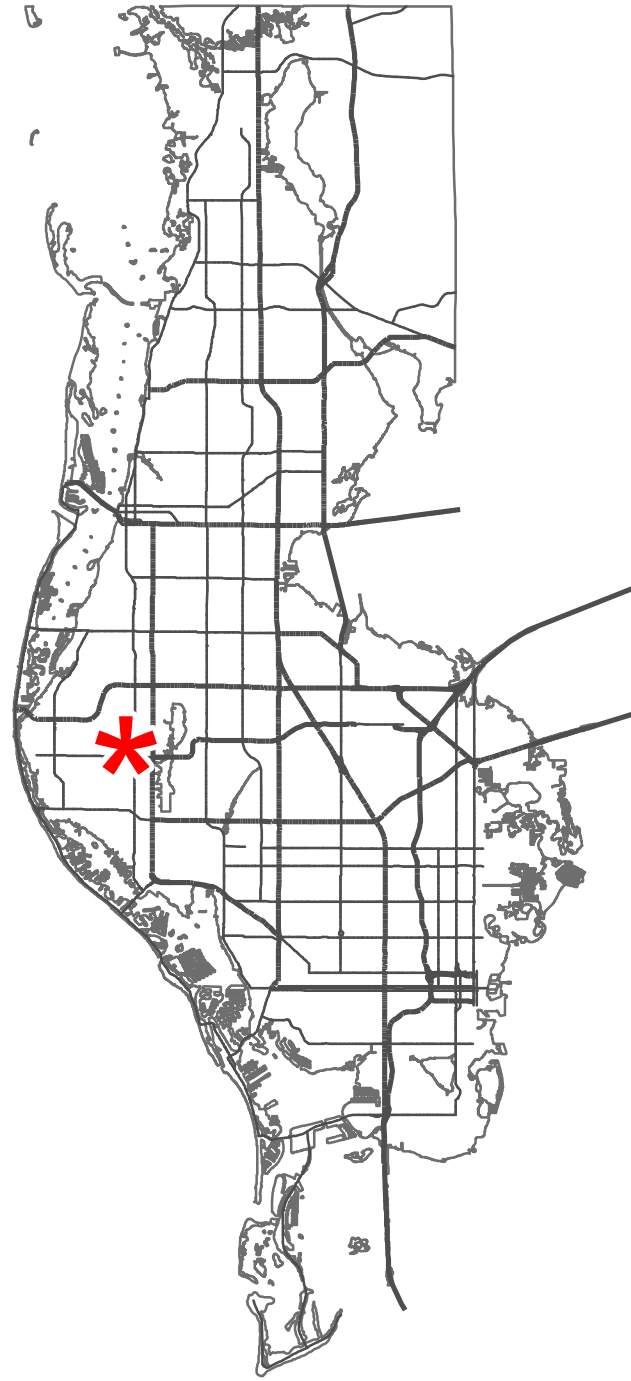
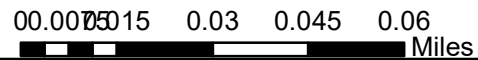


Sanitary Sewer Interceptor CIPP 002747GHI Seminole: 74th Ave. N.



Designed by:
 Drawn by:
 Approved by:



Pinellas County Utilities GIS Disclaimer
 The information being provided is made available as a public service. Maps and data are to be used for reference purposes only. The data contained on the Pinellas County Utilities Department (PCU) Geographic Information System is subject to constant change. PCU, its agents, consultants, contractors and employees provide this information AS IS without warranty of any kind implied or expressed, including the implied warranties and merchantability and fitness for a particular purpose, as to the information being accurate or complete.

Map information is believed to be accurate but accuracy is not guaranteed. With knowledge of the foregoing, by proceeding to use PCU's GIS data, each user agrees to waive, release and indemnify PCU, its agents, consultants, contractors and employees from any and all claims, actions or causes of action for damages or injury or property arising from the use or inability to use the PCU's GIS. The GIS information is not a replacement for locating buried utilities by contacting Sunshine 811, performing field location and Surface Utilities Engineering (SUE).