

# Board of County Commissioners

Case #Z/LU-22-10-19

November 12, 2019



**Our Vision:**  
To Be the Standard for  
Public Service in America.

# Request

## Subject Area

**Approximately 0.22 acre portion of two parcels in Crystal Beach**

## Future Land Use Amendment

**From: Residential Urban (RU)**

**To: Commercial General (CG)**

## Zoning Atlas Amendment

**From: RM (Multi-Family Residential)**

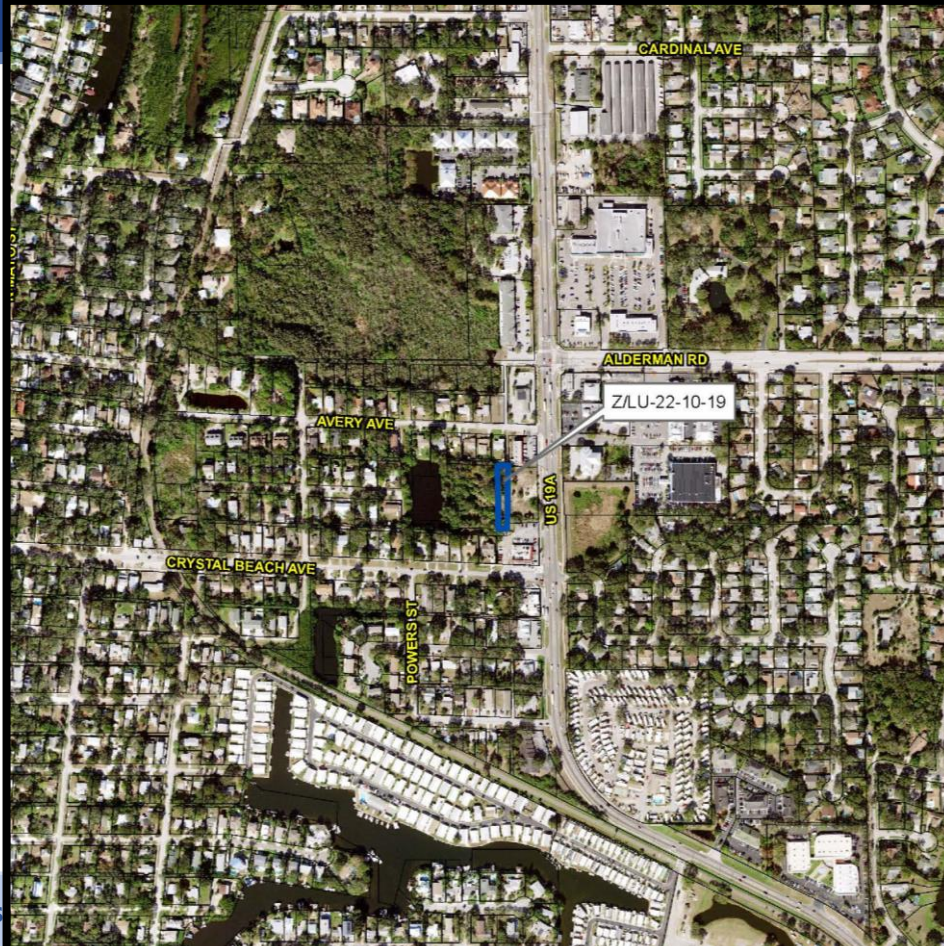
**To: C-2, (General Commercial and Services)**

## Proposed Use

**Commercial development**



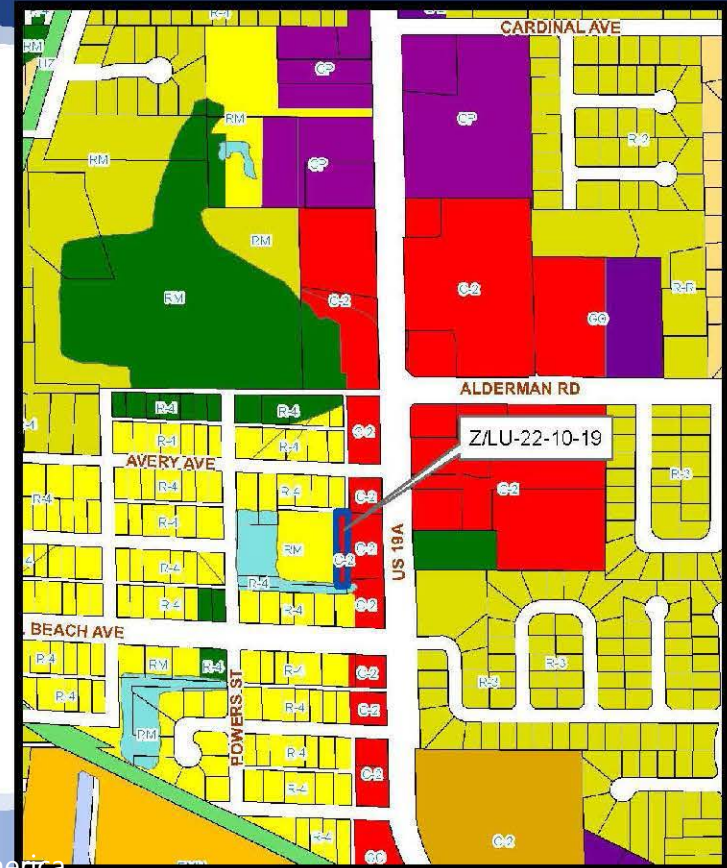
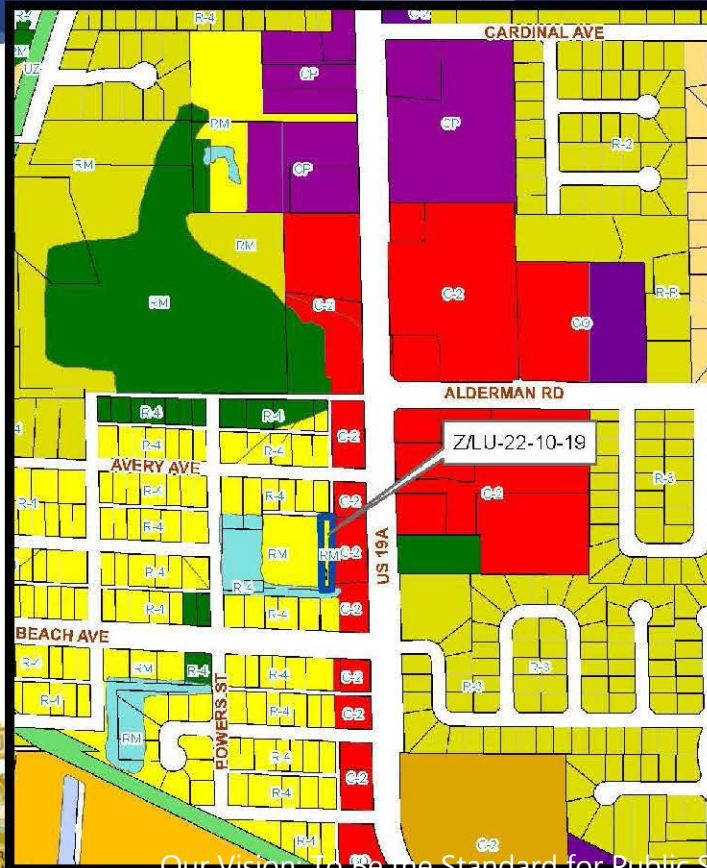
# Location



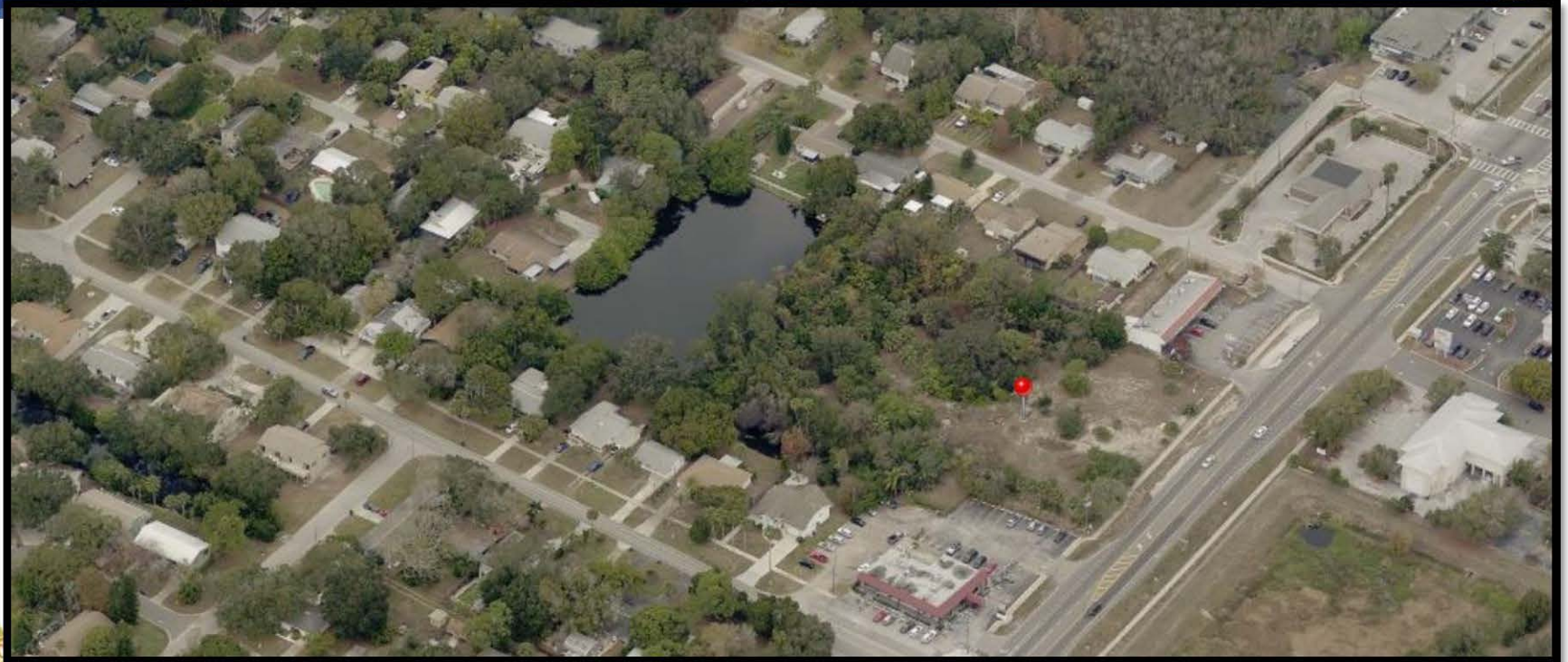
Surrounding property owners within 400 feet were notified by mail.



# Zoning/Future Land Use



# Site Photos





# Site Photos



**Looking west at subject site from US Alt 19**

# Site Photos



Looking to the south along  
US Alt 19



Looking to the north along  
US Alt 19

# Additional Info & Recommendation



## Intended Use

**Add this 0.22 acre portion to the commercial portion on the east for a proposed commercial development**

## Proposed amendments are appropriate

**Compatible with the surrounding area**

**Consistent with the Comprehensive Plan**

**Consistent with the Crystal Beach Community Overlay**

## Staff recommends Approval

## Local Planning Agency – Recommended Approval, 6-0 vote

