

FLU-23-08

Location Map

From: RL, Residential Low
Future Land Use
To: RU, Residential Urban



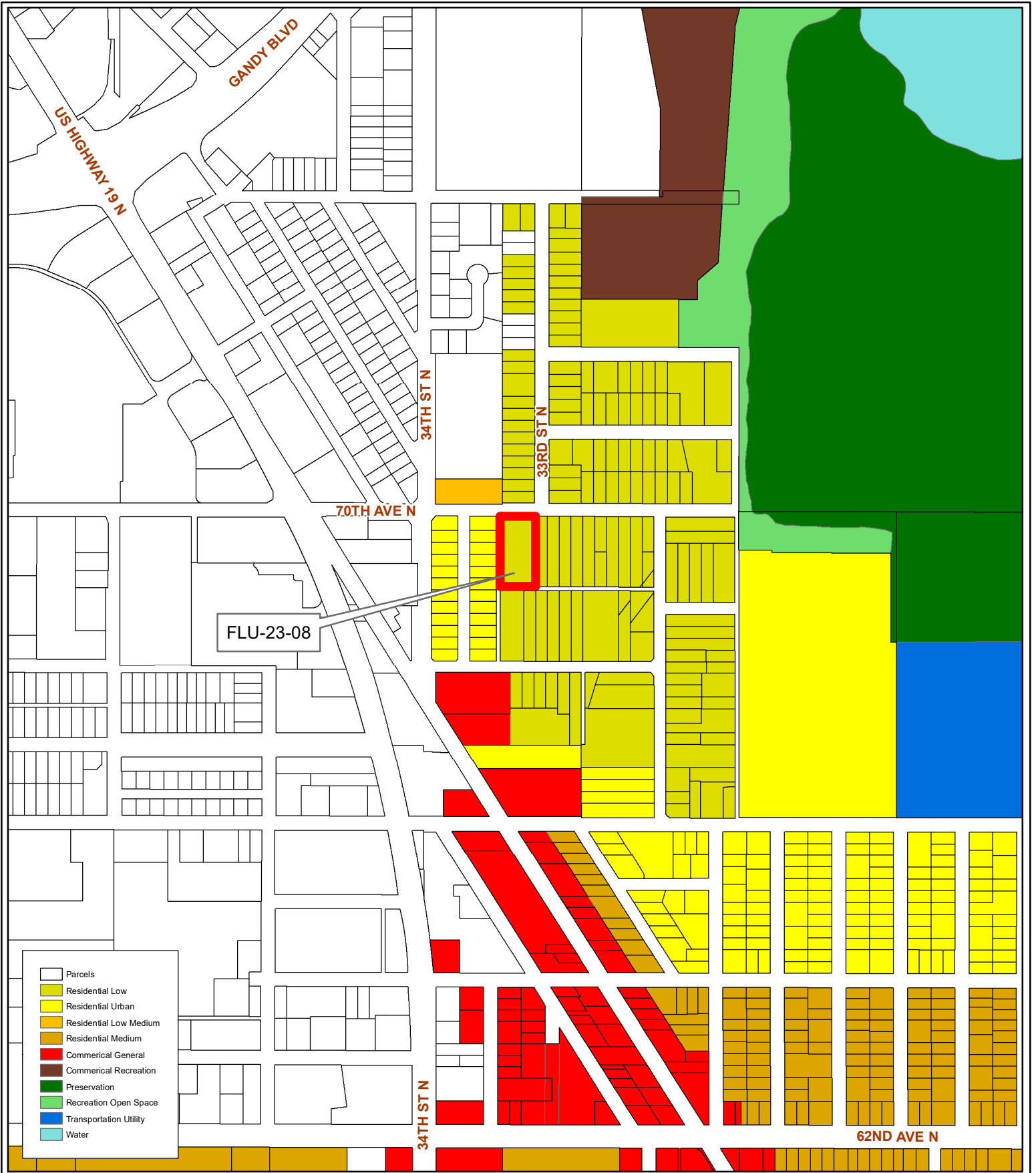
35/30/16/03240/000/0630

Prepared by: Housing & Community Development Department



Date: 9/27/2023

1 inch = 4.5 miles



FLU-23-08

Current Land Use

Future Land Use
 From: RL, Residential Low
 To: RU, Residential Urban

35/30/16/03240/000/0630

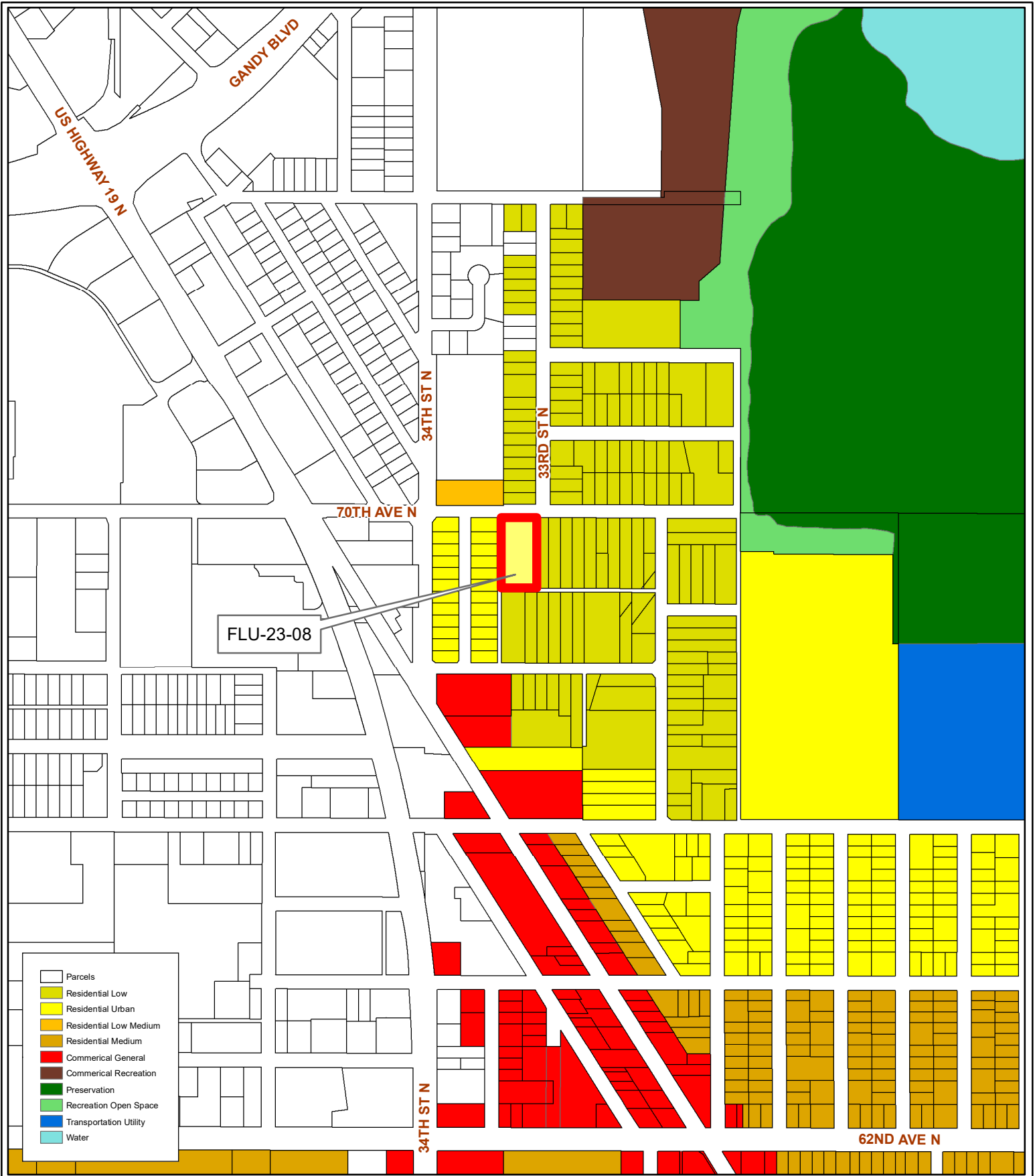
Prepared by: Housing & Community Development Department



Date: 9/27/2023



1 inch = 0.1 miles



- Parcels
- Residential Low
- Residential Urban
- Residential Low Medium
- Residential Medium
- Commercial General
- Commercial Recreation
- Preservation
- Recreation Open Space
- Transportation Utility
- Water

FLU-23-08
Proposed Land Use

Future Land Use
 From: RL, Residential Low
 To: RU, Residential Urban

35/30/16/03240/000/0630

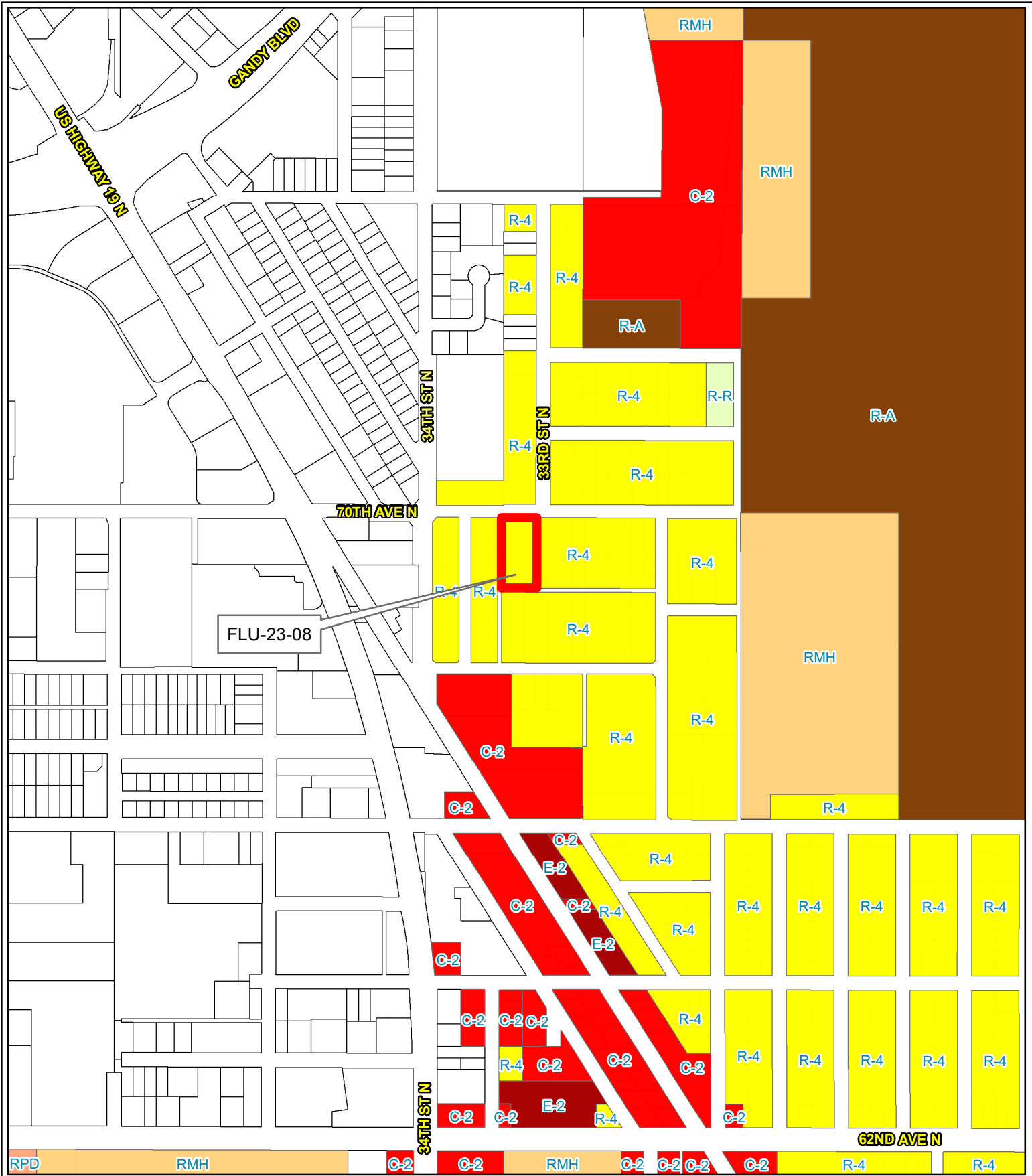
Prepared by: Housing & Community Development Department



Date: 9/27/2023



1 inch = 0.1 miles



FLU-23-08
Zoning Map

Current Zoning



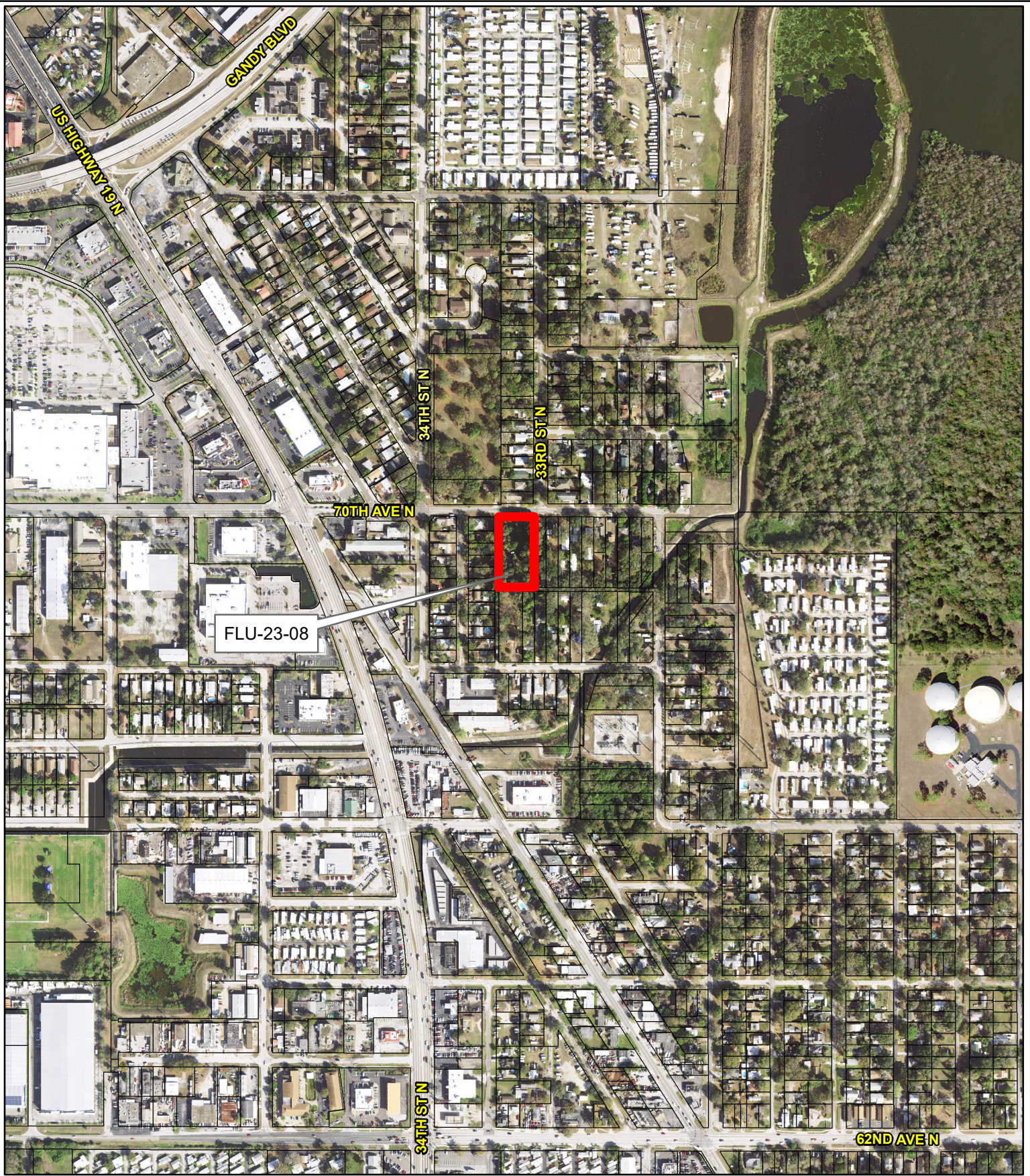
35/30/16/03240/000/0630

Prepared by: Housing & Community Development Department



Date: 12/5/2023

1 inch = 0.1 miles



FLU-23-08

Aerial Map

From: RL, Residential Low
Future Land Use
To: RU, Residential Urban



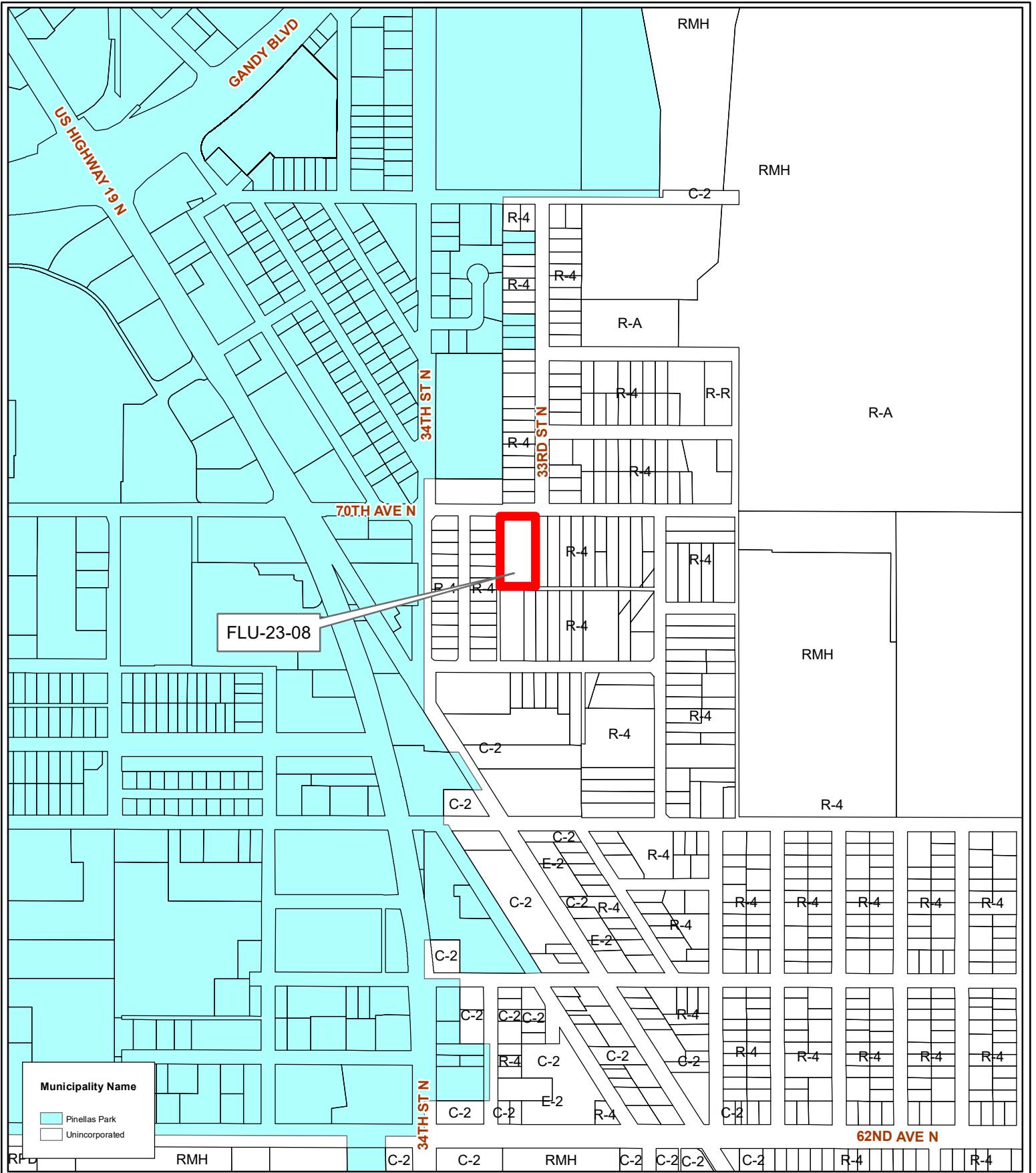
35/30/16/03240/000/0630

Prepared by: Housing & Community Development Department



Date: 9/27/2023

1 inch = 0.1 miles



FLU-23-08

Municipality Name

- Pinellas Park
- Unincorporated

FLU-23-08
Municipal Map

Future Land Use
From: RL, Residential Low
To: RU, Residential Urban



35/30/16/03240/000/0630

Prepared by: Housing & Community Development Department



Date: 9/27/2023

1 inch = 0.1 miles