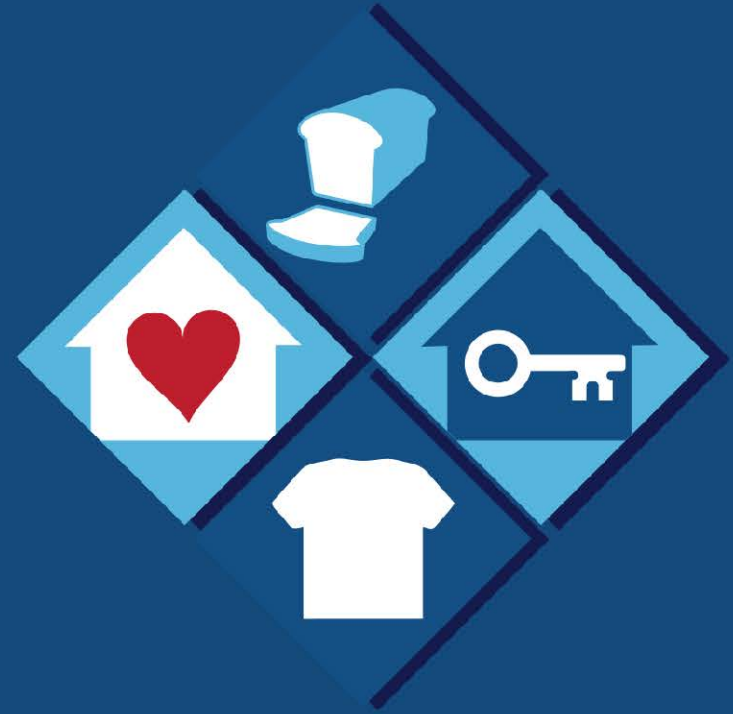


RCS

PINELLAS

Help & Hope For People In Need





RCS Pinellas

Snapshot of Who We Are

'Hope Restoration Specialists'



Kirk Ray Smith, BHS, MHS
President & CEO



OUR MISSION, VISION and VALUES

OUR MISSION

- RCS's Mission is to feed the hungry, help families facing homelessness return to self sufficiency and empower survivors of domestic violence.

OUR VISION

- RCS will be recognized as the premier agency providing basic needs services with the goal of ending generational cycles of hunger, homelessness and domestic violence.

OUR VALUES

- Compassion-Support-Fairness-Dignity-Service-Trust



‘A New Way Forward’

Becoming More Viable, Impactful, Visible, Inspirational and Deliverable

FY19 – FY21 Strategic Priorities

Address More Community Needs

Develop Passionate, Mission-Driven Leaders

Advocate to Influence Public Policy

Collaborate with Others

Promote and Protect the RCS Brand

Promote Sustainability and Philanthropy



Organizational Facts

- Established by 15 local congregations in 1967
- 80 full and part time staff
- 2,500 volunteers
- 5 Unique Program Branches
- Operating Budget- \$10 million
- We receive roughly \$9.5 million in annual support.
 Greater than 70% comes from government grants and contracts
- Serving over 130,000 people annually
- Serves all of Pinellas County
- \$0.85 - \$0.92 of Every \$1 Goes to Direct Support of our Mission
- Named both Large Charity and Large Business of the year in 2018



OUR COMMUNITY CONTRACT

Hunger: Everyone Eats...

- RCS Food Bank

Homelessness: Everyone is Secure...

- RCS Grace House
- RCS Affordable Housing

Domestic Violence: Everyone is Safe...

- The Haven of RCS

Basic Needs: No One Goes Without...

- RCS Thrift Store Partnership
- Duke Energy Assistance Program



OUR COMMUNITY CONTRACT

RCS Food Bank & Network Distribution

Pounds of food we provide annually

- **Onsite:** 1.5 mil lbs. of food
- **Sub-sites:** 2.2 mil lbs. of food
- **Total:** 3.7 mil lbs. of food

Pounds of food needed to feed a family of four

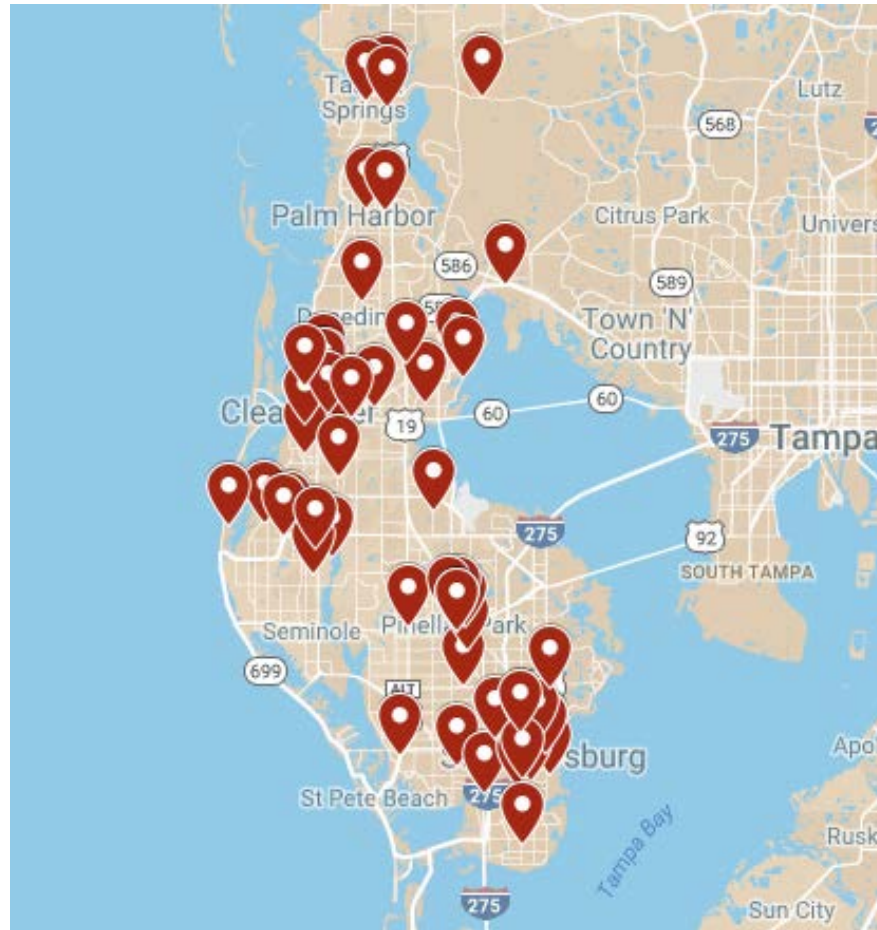
- **One week:** 131 lbs. of food
- **One month:** 560 lbs. of food
- **One year:** 6804 lbs. of food

Average number of individuals we serve on a daily basis

- Over 1000 children, adults and seniors throughout Pinellas County through sub-sites



RCS Supported Food Banks, Pantries, Kitchens



OUR COMMUNITY CONTRACT

RCS Grace House

- 550 individuals each year through residential services
- 40 individuals through our follow-up case management program
- 61% of participants are children
- Average length of stay is 10-12 weeks
- 28% of individuals come from southern Pinellas County
- Average cost per person per night is \$20 for shelter services
- 9 out of 10 families who complete the program move on to permanent, sustainable housing

RCS Affordable Housing

- Provide long-term/permanent housing for 11 families and 30 individuals annually
- 63% are children
- Average daily cost to operate is \$50 per day



OUR COMMUNITY CONTRACT

The Haven of RCS

- The Outreach Center serves over 17,000 individuals each year – 47% are children
- The Safe House Shelter serves over 250 women and children each year – 33% are children
- Average length of stay at shelter is over 60 days
- 30% of shelter participants come from south county
- Average daily cost to operate our safe house shelter is \$55 per person

RCS Thrift Store Partnership

- Provide clothing, household items and furniture RCS participants and the central and north Pinellas community
- Provide direct and indirect retail services through strategic service alliances
- Serve 1000 participants annually including 200 homeless individuals annually

Energy Assistance Program

- Provide energy bill assistance to over 85 families annually throughout central and north Pinellas
- Provide over \$10,000 in energy assistance through Duke Energy and the United Way
- We turn away nearly 500 individuals each year due to limited financial resources



Culture of Adding Capacity

Providing Help & Hope through Innovation and Collaboration



Appeal '365'

- **Advocacy**- understanding and willingness to take the *Time* to communicate RCS
- **Volunteerism**- willingness to share individual and group *Talent* with RCS
- **Financial Support**- ability and commitment to provide financial *Treasure* in support of RCS



RCS RECEIVED THE DISTINCT HONOR OF



2018

**LARGE
CHARITY**

**BUSINESS OF THE YEAR
AWARD WINNER**



TAMPA BAY **BUSINESS JOURNAL**



**UPPER TAMPA BAY
Chamber of Commerce**

**LARGE BUSINESS
OF THE YEAR AWARD
2018**

RCS RECEIVED THE DISTINCT HONOR OF



for the 3rd year in a row!

Only 17% of the charities evaluated have received at least 3 consecutive 4-star evaluations!

Housing Expansion Initiative 2020-21



RCS Affordable Housing – Goldsmith Gardens



Housing Expansion Initiative 2020-21



Proposed New Affordable Housing Locations



Housing Expansion Initiative 2020-21



RCS Grace House



We Appreciate You!



WWW.RCSPINELLAS.ORG

