

**Map 1 - Location**

**CASE #:** CW19-07

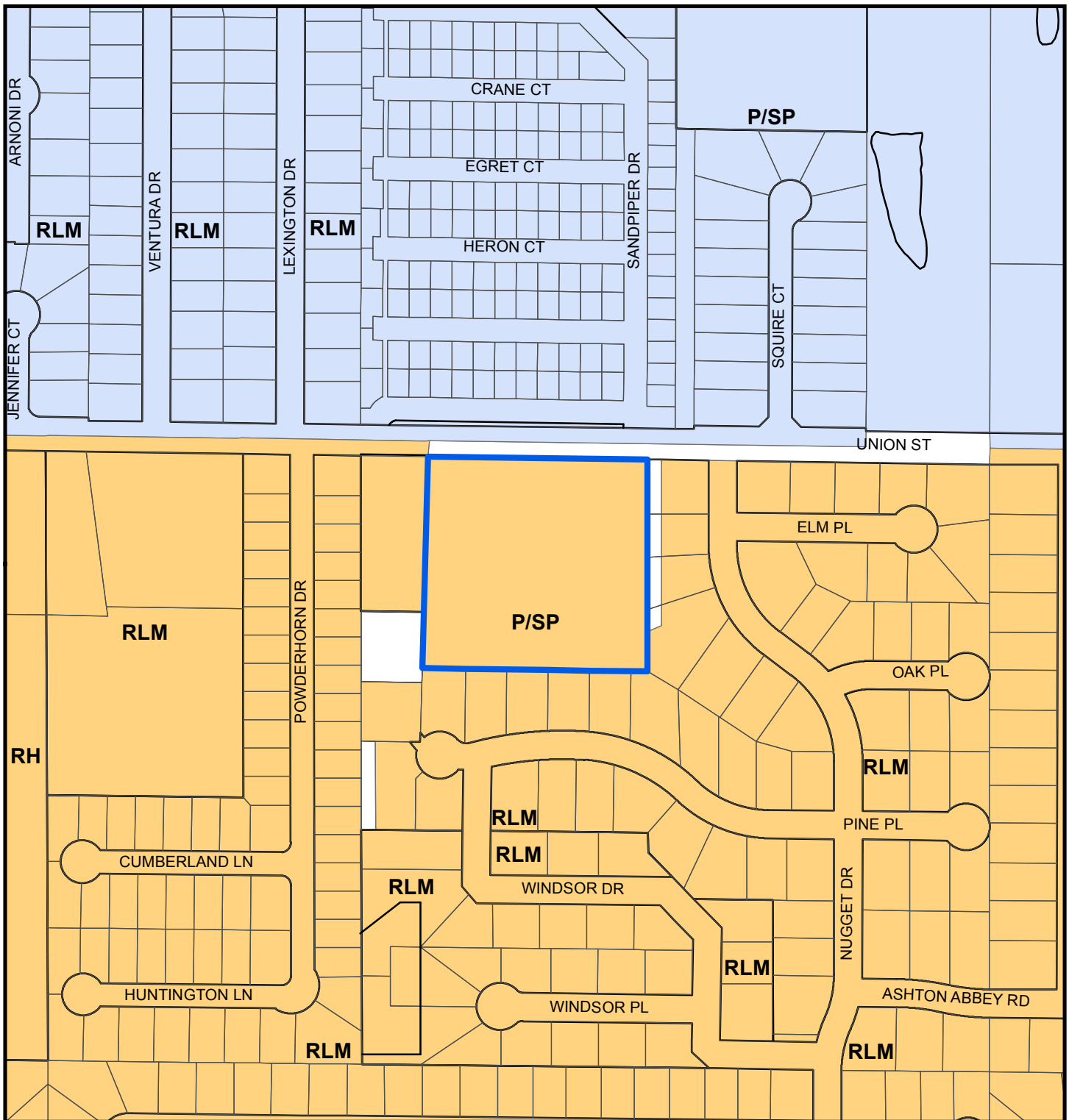
**FROM:** Public/Semi-Public

**AREA:** 4.88 Acres

**JURISDICTION:** Clearwater

**TO:** Residential Low Medium





## Map 2 - Current Countywide Plan Map & Jurisdictional Map

**CASE #:** CW19-07

**FROM:** Public/Semi-Public

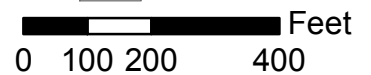
**AREA:** 4.88 Acres

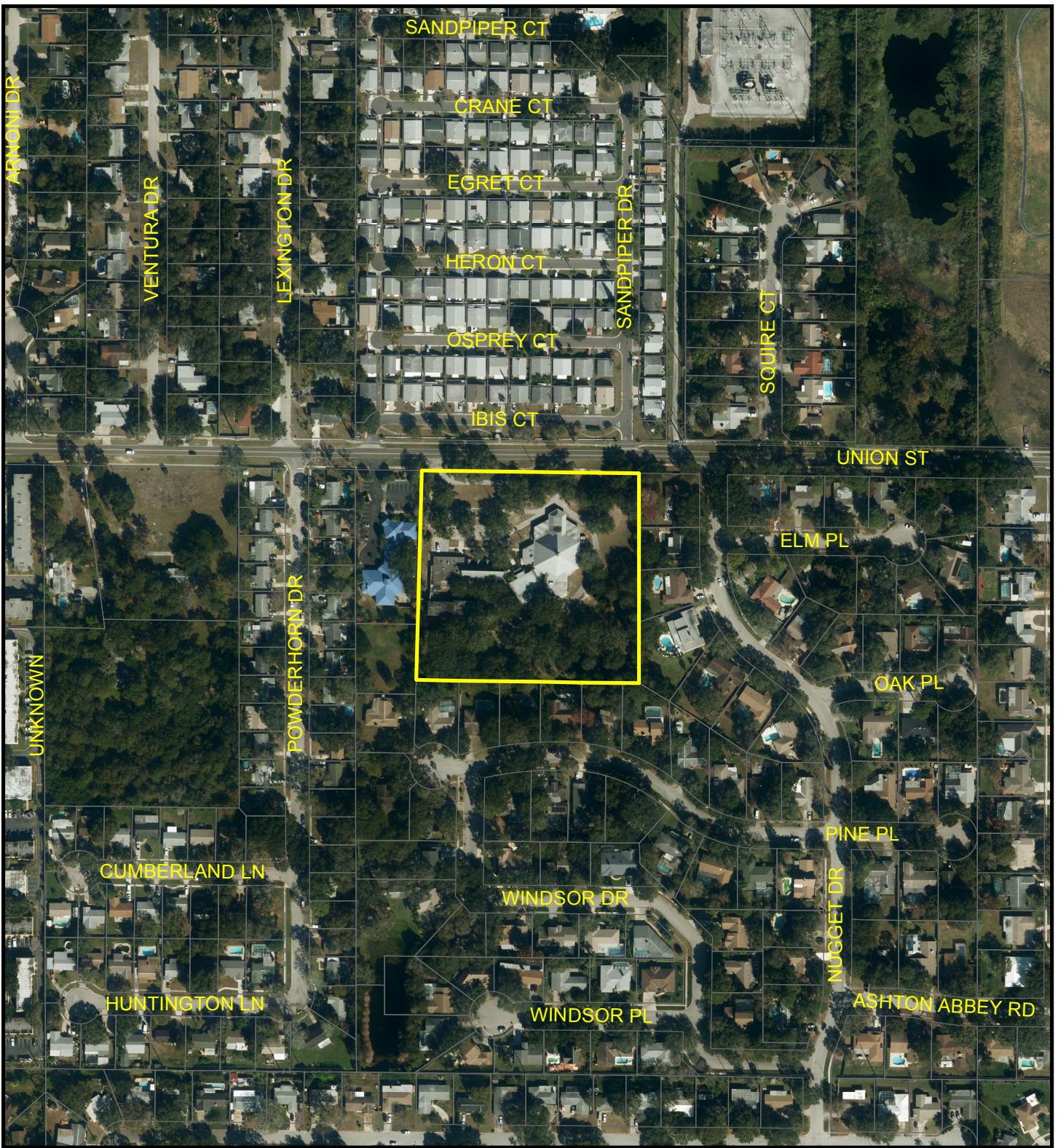
**JURISDICTION:** Clearwater

**TO:** Residential Low Medium

**LEGEND:**

- Clearwater
- Dunedin
- Unincorporated





### Map 3 - Aerial

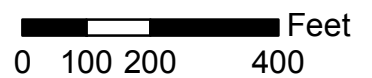
**CASE #:** CW19-07

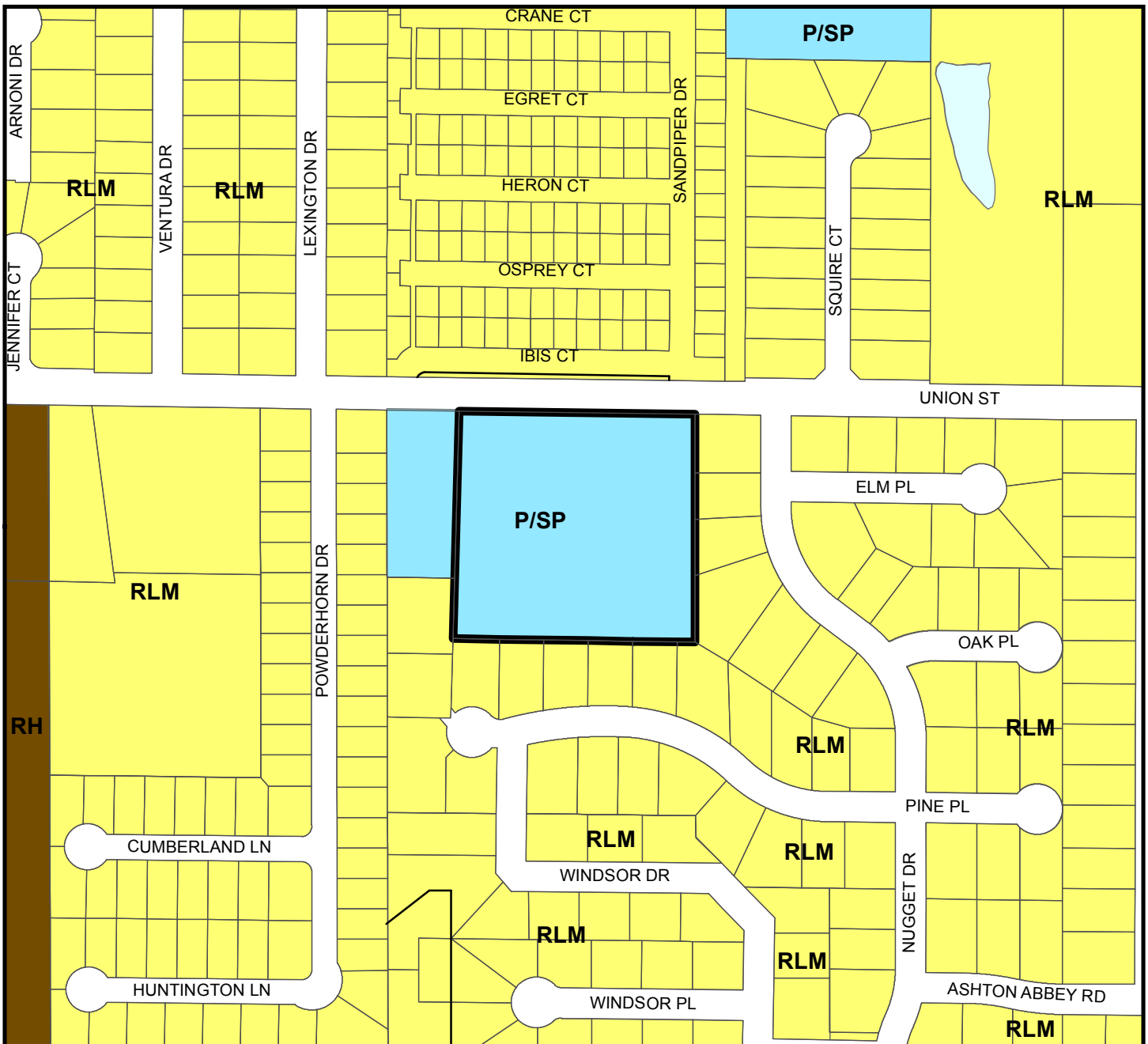
**FROM:** Public/Semi-Public

**AREA:** 4.88 Acres

**JURISDICTION:** Clearwater

**TO:** Residential Low Medium





**Countywide Plan Map Categories**

- Residential Low Medium
- Public/Semi-Public
- Residential High

**Map 4 - Current Countywide Plan Map**

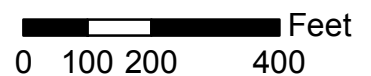
**CASE #:** CW19-07

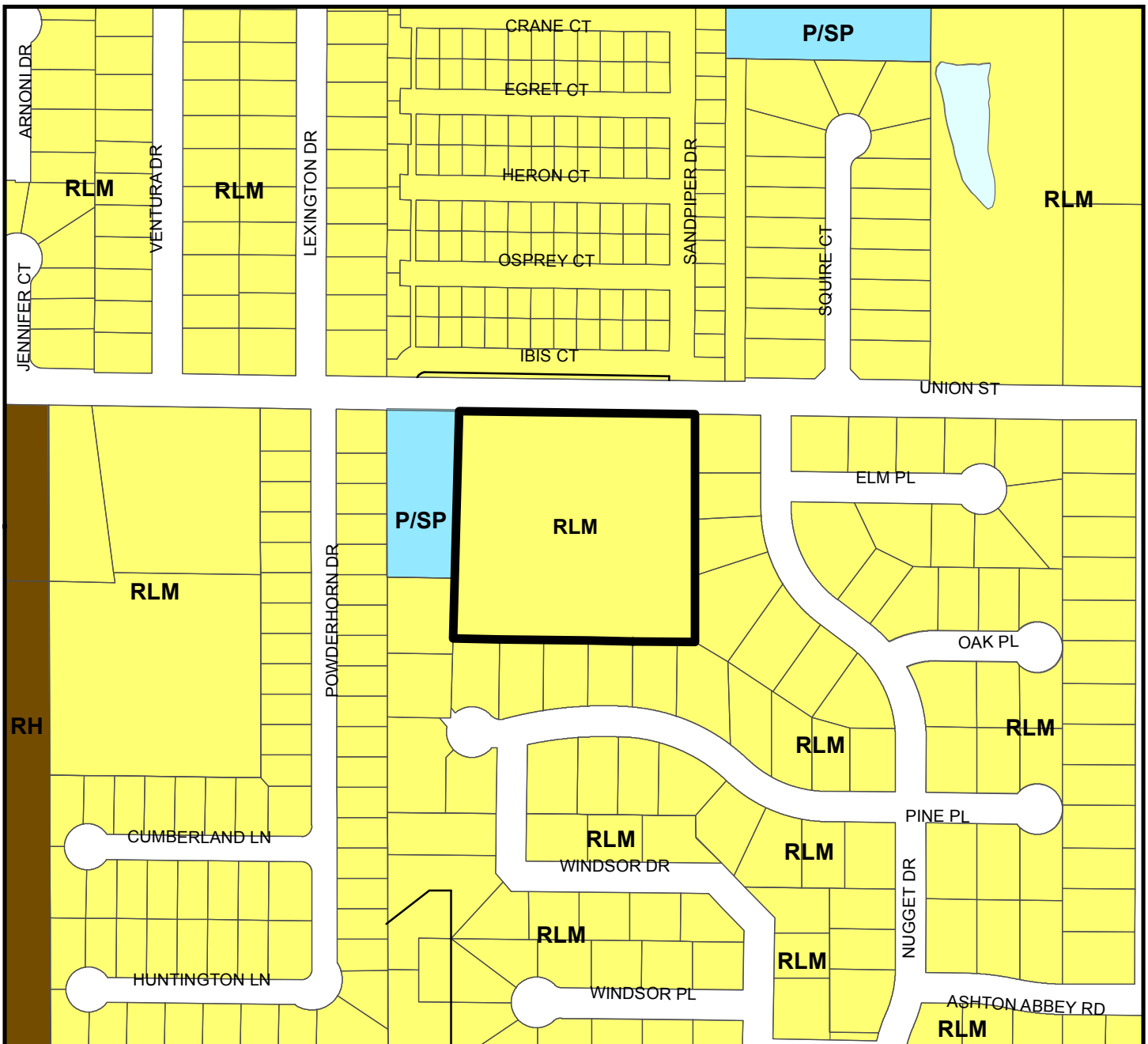
**FROM:** Public/Semi-Public

**AREA:** 4.88 Acres

**JURISDICTION:** Clearwater

**TO:** Residential Low Medium





**Countywide Plan Map Categories**

Residential Low Medium
  Residential High
  Public/Semi-Public

**Map 5 - Proposed Countywide Plan Map**

**CASE #:** CW19-07

**FROM:** Public/Semi-Public

**AREA:** 4.88 Acres

**JURISDICTION:** Clearwater

**TO:** Residential Low Medium

