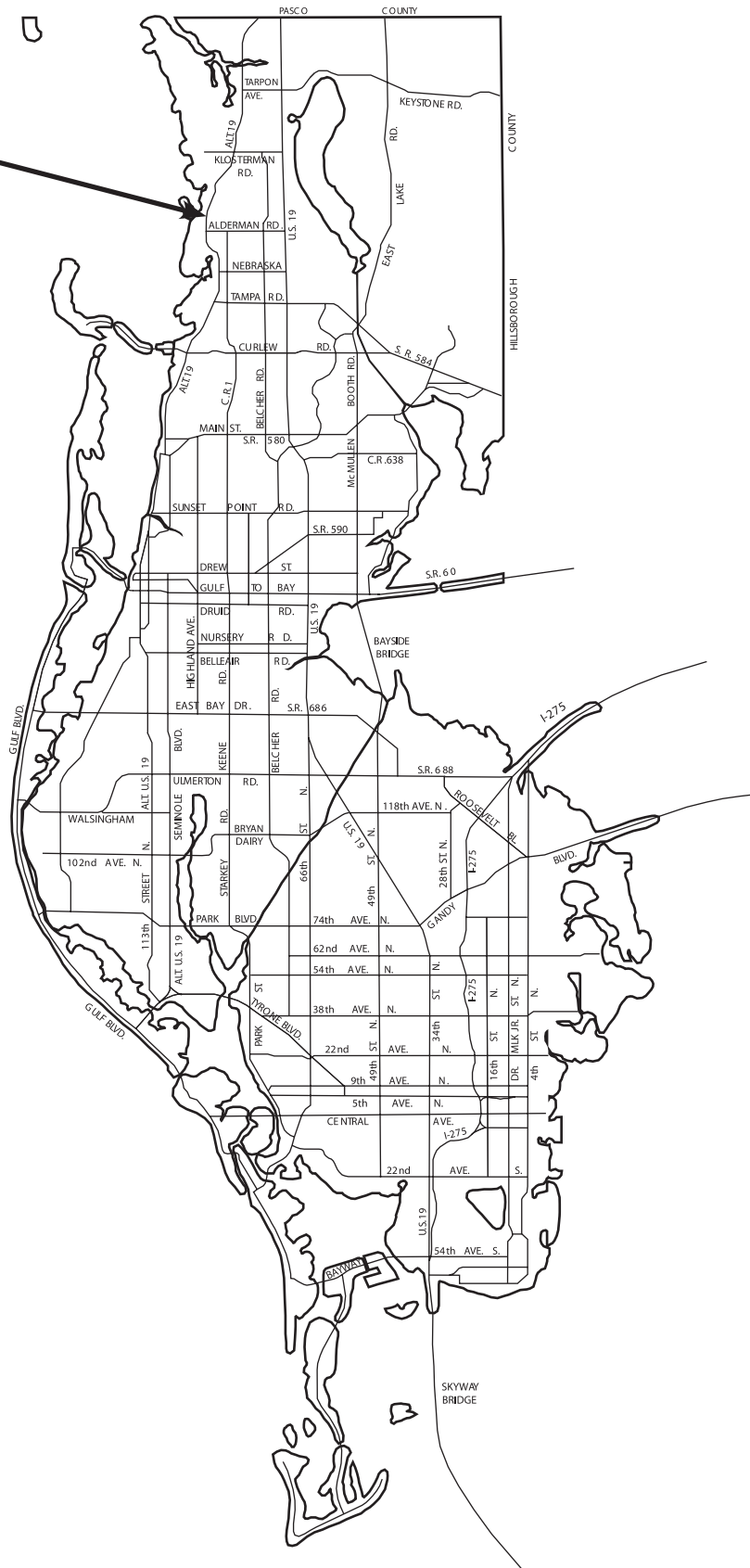


LOCATION MAP

Z-3-1-16



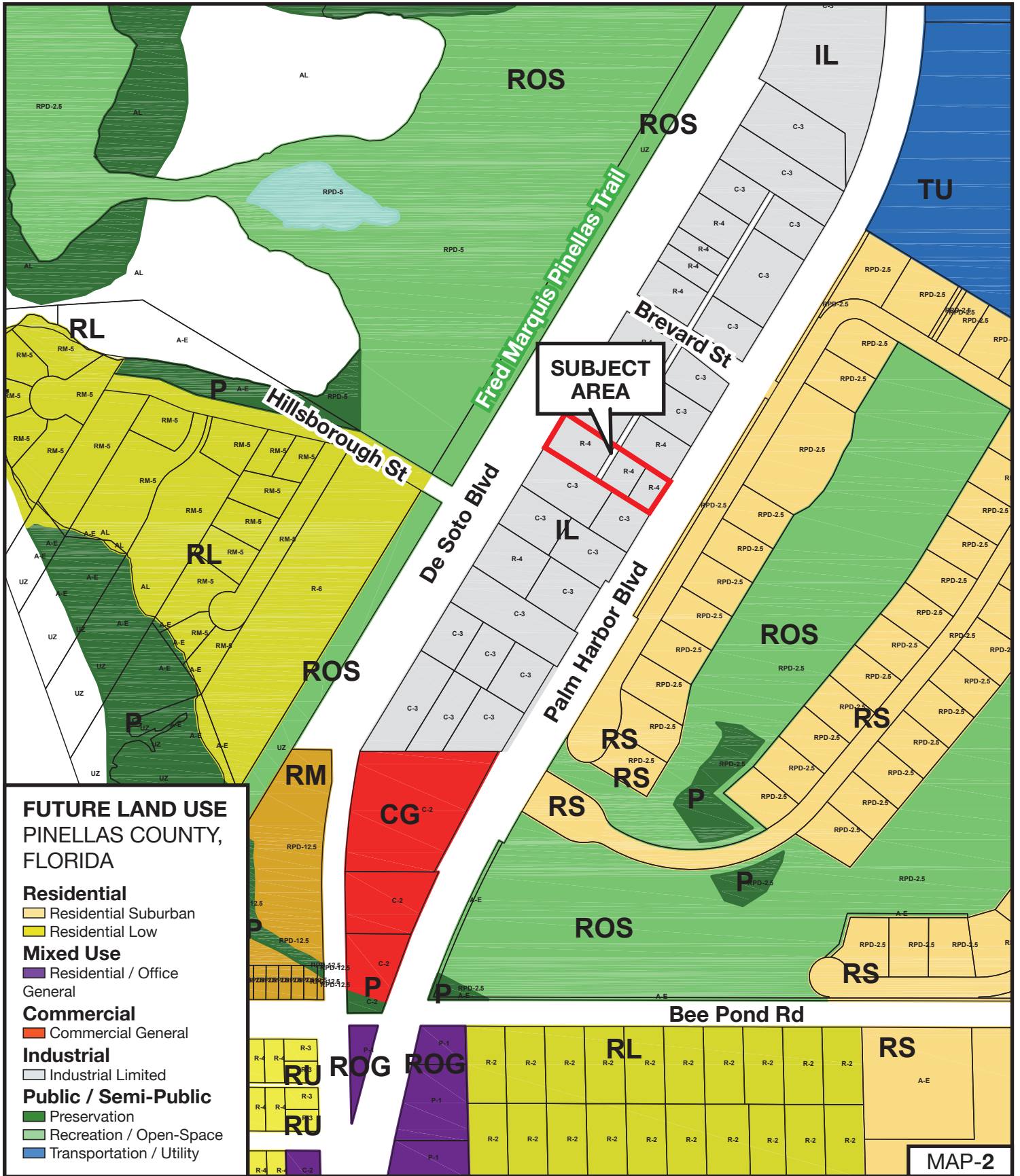
MAP-1

Z-3-1-16

Zoning From: R-4, One, Two & Three Family Residential
To: C-3, Commercial, Wholesale, Warehousing & Industrial Support

Parcel I.D. 26/27/15/94590/006/0090, 0040, & 0041
 Prepared by: Pinellas County Planning Department November 2015





Z-3-1-16

Zoning From: R-4, One, Two & Three Family Residential
To: C-3, Commercial, Wholesale, Warehousing & Industrial Support

Parcel I.D. 26/27/15/94590/006/0090, 0040, & 0041
 Prepared by: Pinellas County Planning Department November 2015





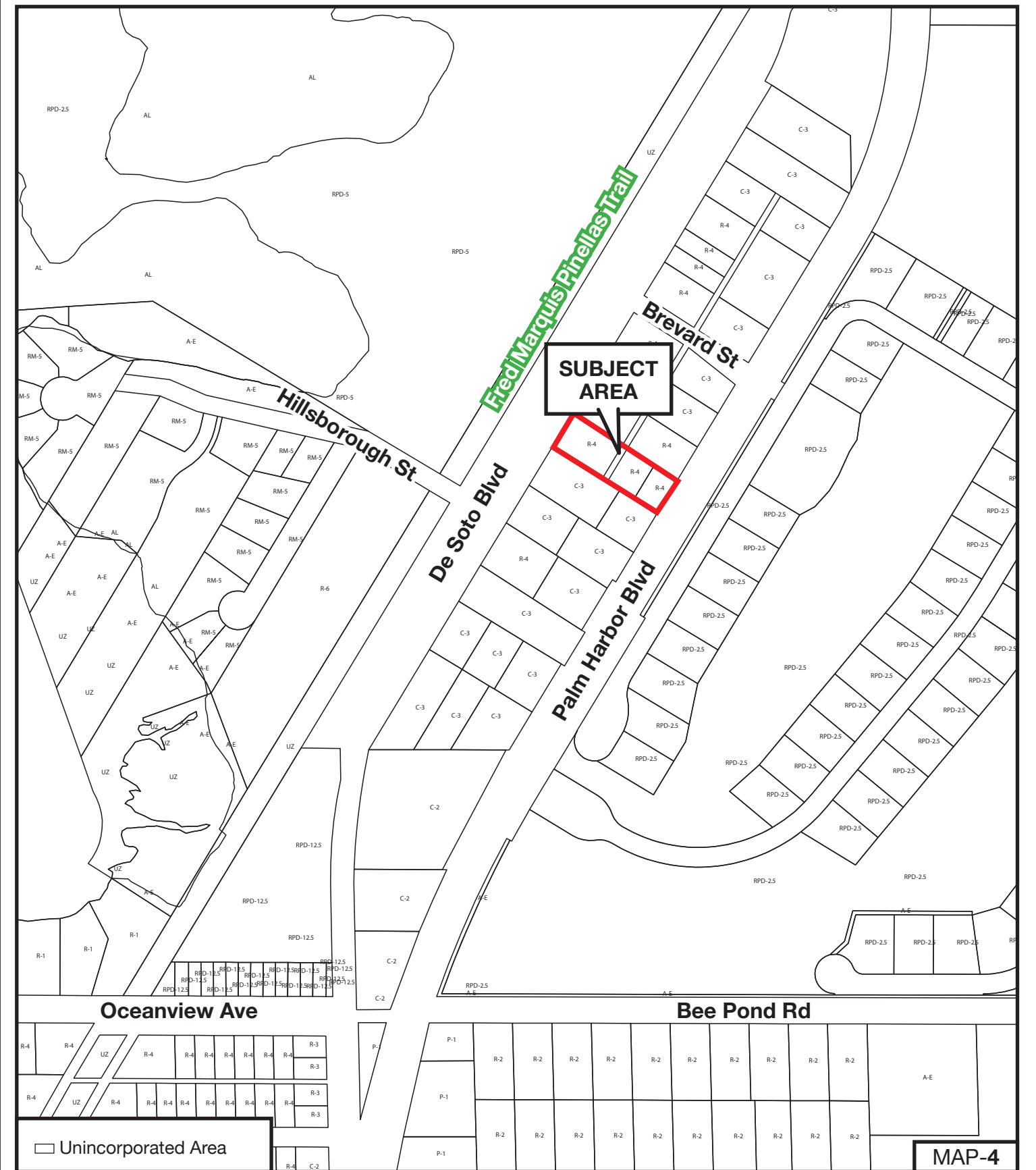
MAP-3

Z-3-1-16

Zoning From: R-4, One, Two & Three Family Residential
To: C-3, Commercial, Wholesale, Warehousing & Industrial Support

Parcel I.D. 26/27/15/94590/006/0090, 0040, & 0041
 Prepared by: Pinellas County Planning Department November 2015





SUBJECT AREA

Oceanview Ave

Bee Pond Rd

□ Unincorporated Area

MAP-4

Z-3-1-16

Zoning From: R-4, One, Two & Three Family Residential
To: C-3, Commercial, Wholesale, Warehousing & Industrial Support



Parcel I.D. 26/27/15/94590/006/0090, 0040, & 0041
 Prepared by: Pinellas County Planning Department November 2015