

Z/LU-08-05-17
LOCATION MAP

Zoning From: A-E, Agricultural Estate Residential
To: IL-CO, Institutional Limited - Conditional Overlay
Land Use From: Residential Suburban
To: Institutional
 Conditional Overlay limiting the use to an ALF.
 And a variance for expansion of an existing assisted living facility (ALF) to within 635 feet of another ALF, where 1,000 feet is required.

17/30/15/70632/300/1703

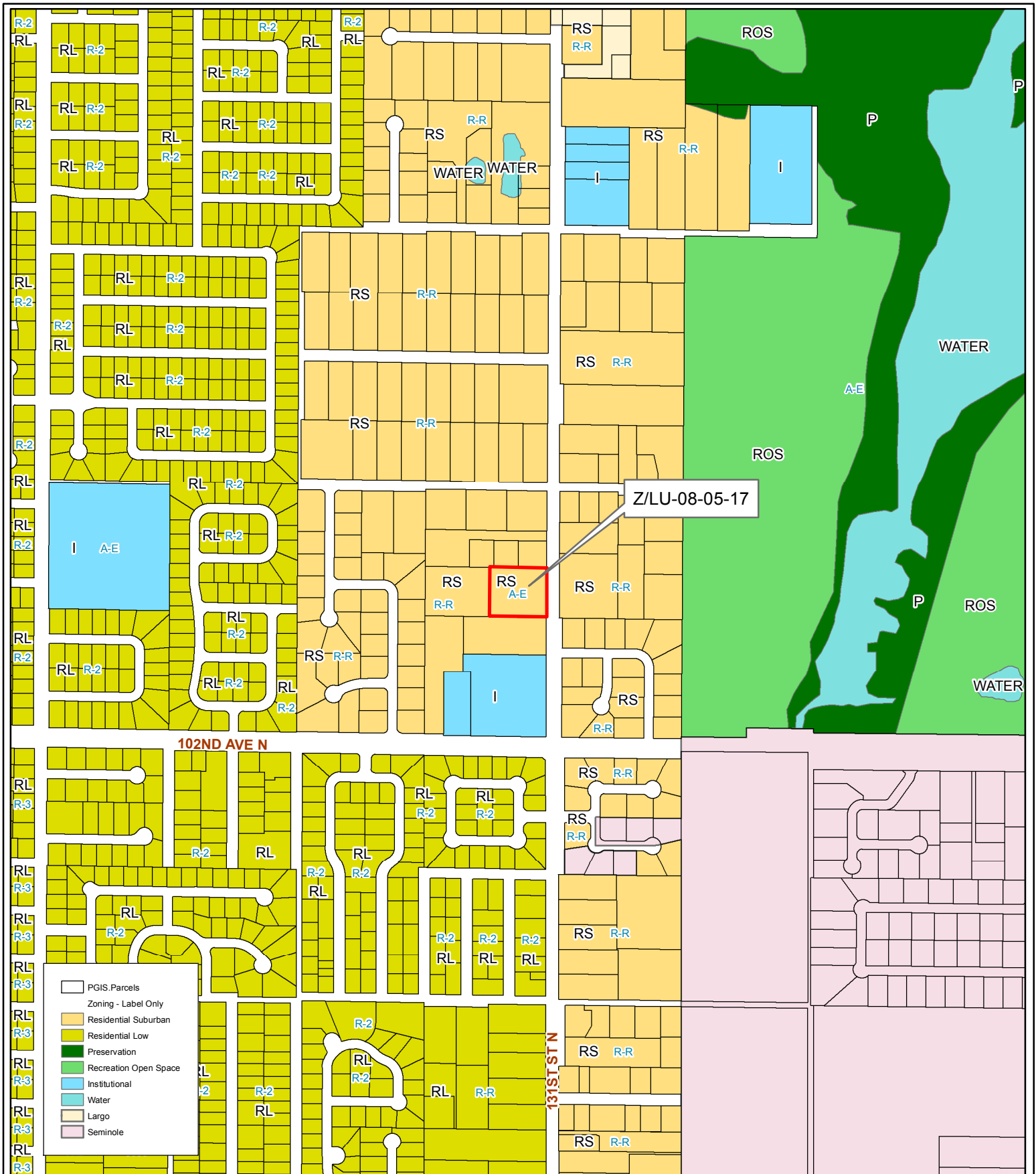
Prepared by: Pinellas County Planning Department



Date: 03/28/2017



1 inch = 4.5 miles



Z/LU-08-05-17
CURRENT FUTURE
LAND USE & ZONING

Zoning From: A-E, Agricultural Estate Residential
To: IL-CO, Institutional Limited - Conditional Overlay
Land Use From: Residential Suburban
To: Institutional
 Conditional Overlay limiting the use to an ALF.
 And a variance for expansion of an existing assisted living facility (ALF) to within 635 feet of another ALF, where 1,000 feet is required.

17/30/15/70632/300/1703

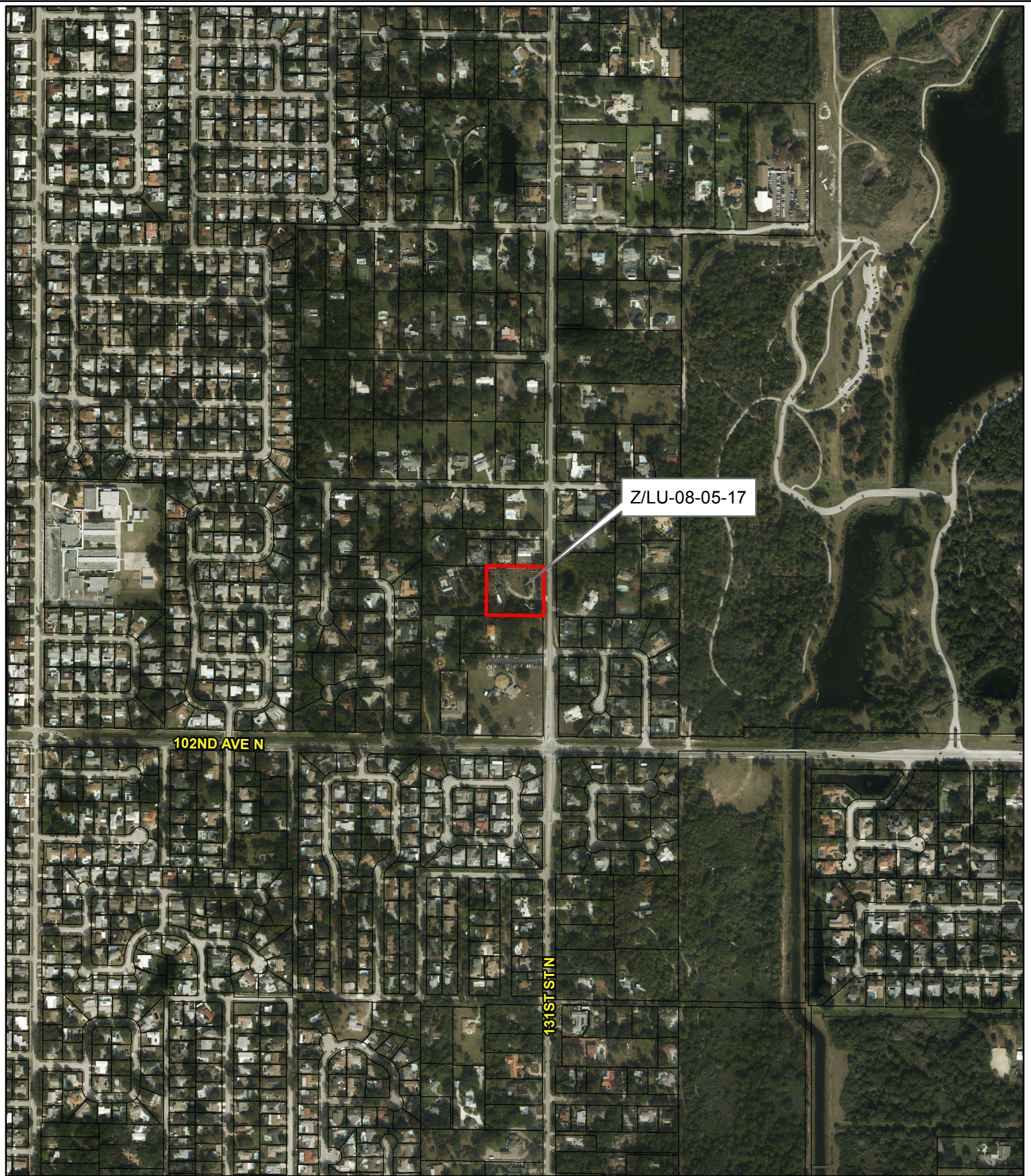
Prepared by: Pinellas County Planning Department



Date: 03/28/2017



1 inch = 0.13 miles



Z/LU-08-05-17

AERIAL MAP

Zoning From: A-E, Agricultural Estate Residential
 To: IL-CO, Institutional Limited - Conditional Overlay
Land Use From: Residential Suburban
 To: Institutional
 Conditional Overlay limiting the use to an ALF.
 And a variance for expansion of an existing assisted living facility (ALF) to within 635 feet of another ALF, where 1,000 feet is required.

17/30/15/70632/300/1703

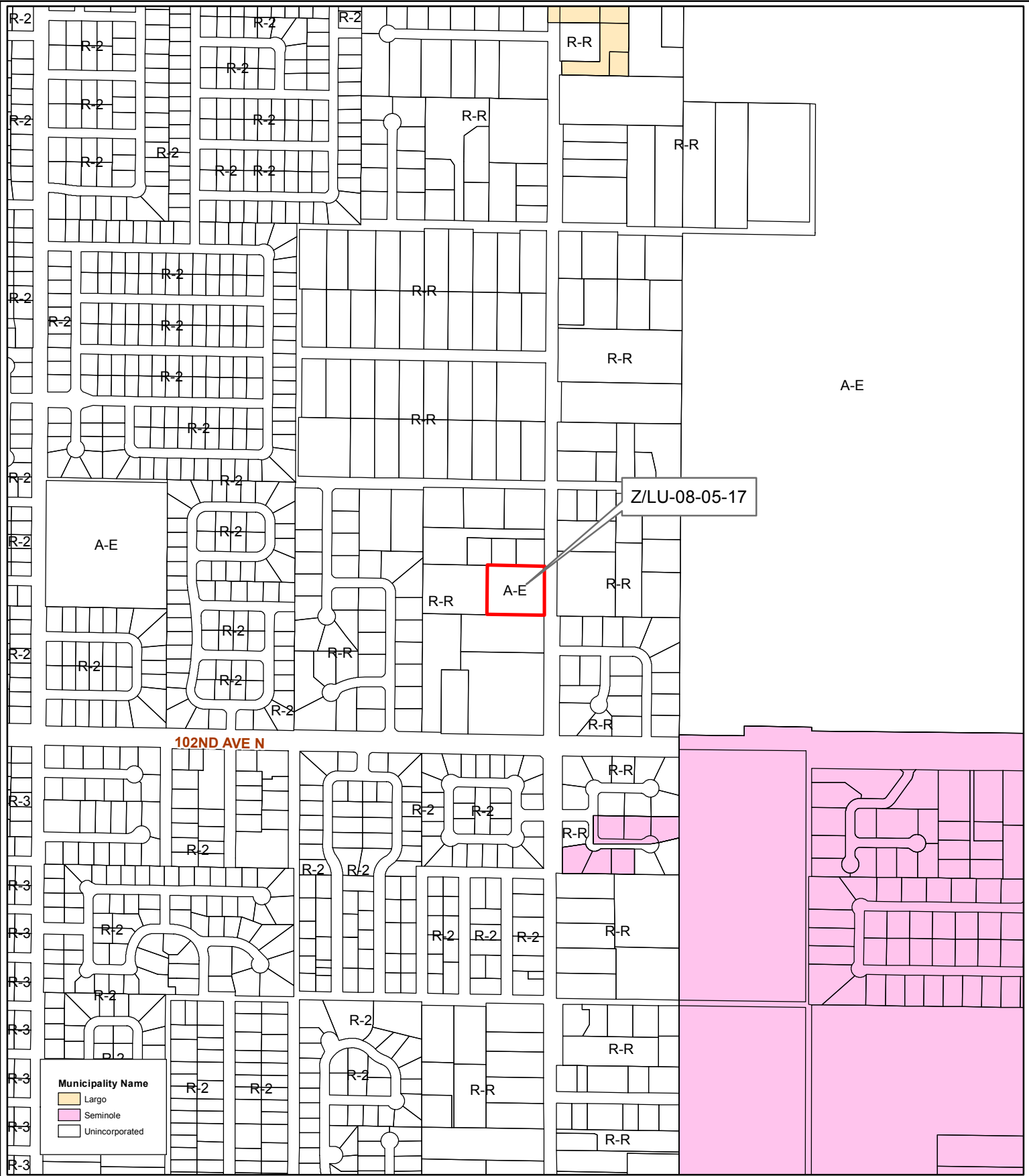
Prepared by: Pinellas County Planning Department



Date: 03/28/2017



1 inch = 0.13 miles



Z/LU-08-05-17
MUNICIPAL MAP

Zoning From: A-E, Agricultural Estate Residential
To: IL-CO, Institutional Limited - Conditional Overlay
Land Use From: Residential Suburban
To: Institutional
 Conditional Overlay limiting the use to an ALF.
 And a variance for expansion of an existing assisted living facility (ALF) to within 635 feet of another ALF, where 1,000 feet is required.

17/30/15/70632/300/1703

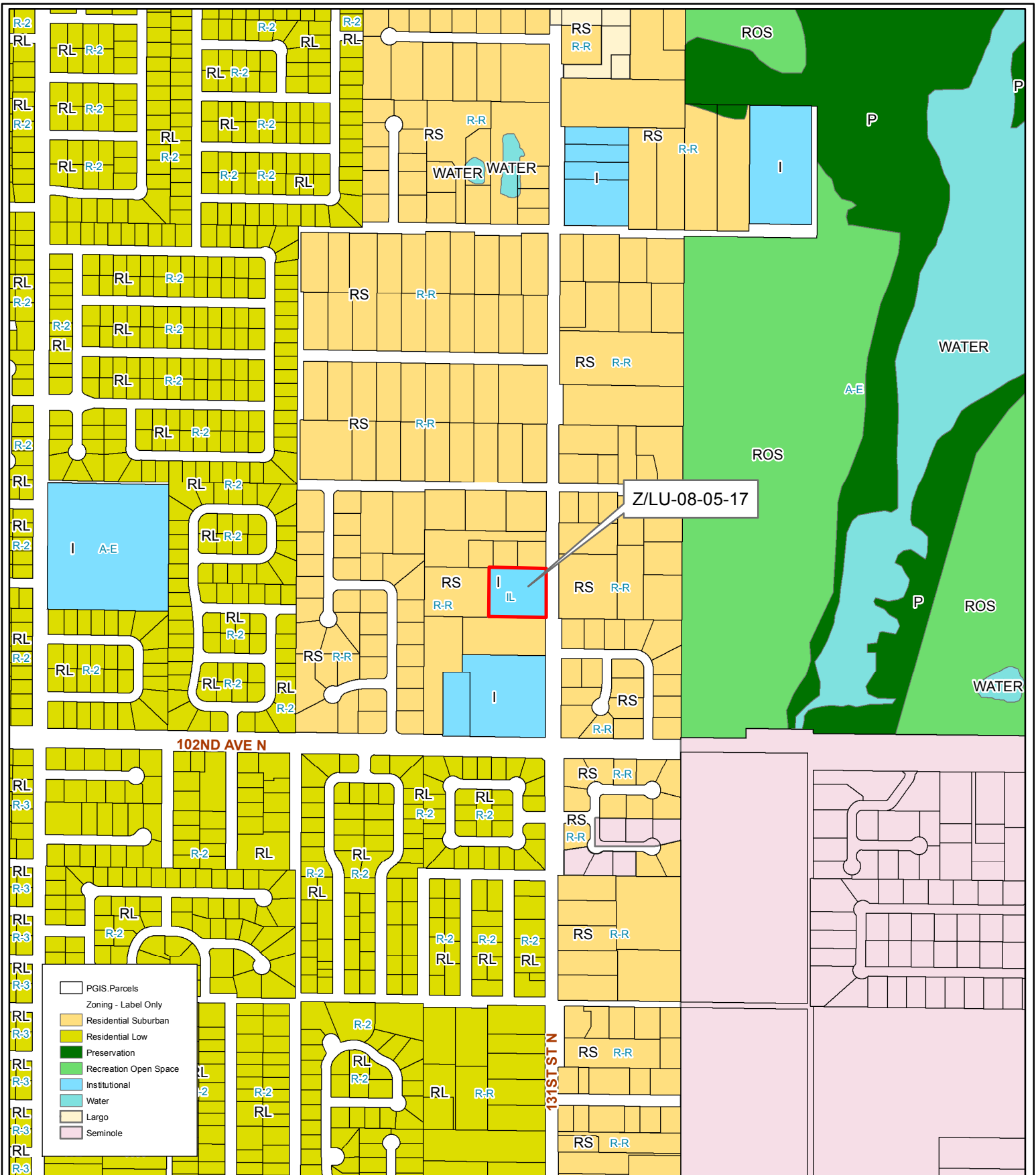
Prepared by: Pinellas County Planning Department



Date: 03/28/2017



1 inch = 0.13 miles



Z/LU-08-05-17
PROPOSED FUTURE
LAND USE & ZONING

Zoning From: A-E, Agricultural Estate Residential
To: IL-CO, Institutional Limited - Conditional Overlay
Land Use From: Residential Suburban
To: Institutional
 Conditional Overlay limiting the use to an ALF.
 And a variance for expansion of an existing assisted living facility (ALF) to within 635 feet of another ALF, where 1,000 feet is required.

17/30/15/70632/300/1703

Prepared by: Pinellas County Planning Department



Date: 03/28/2017



1 inch = 0.13 miles