



# **Pinellas Project Updates**

**David Gwynn, P.E.**

**FDOT District 7 Secretary**

**TAMPA BAY Next**  
THE FUTURE OF TRANSPORTATION

**Gateway Expressway**  
(FPIDs 433880-1, 424501-2 (E7J46))

**Section 2 - I-275 Pinellas Corridor**  
(FPID 449109-1)  
(FPID 449109-2)  
(FPID 424501-7)

**Section 3 - Howard Frankland Bridge**  
(FPIDs 422904-2, 424904-4 (E7R10))

**Section 4 - Tampa's Westshore Interchange**  
Core General Purpose 1 (FPID 447107-2 (E7R30))  
Core General Purpose 2 (FPID 447107-3 (E7R30))  
Core Express Lanes (FPID 447107-4 (E7R30))  
Reo Street Widening (FPID 447615-1)  
Causeway Seawall Trail & SB I-275 (FPID 447534-1 (E7P42))  
Veterans Connection WB SR 60 (FPID 447107-1 (E7R39))  
Veterans Connection EB SR 60 (FPID 447107-5)

**Section 5 - I-275 Corridor**  
I-275 Mainline (FPID 434045-2)  
I-275 Downtown Connection (FPID 434045-3)

**Section 6 - Downtown Tampa Interchange**  
Southbound I-275 to Eastbound I-4 (FPID 445057-1 (E7R70))  
Westbound I-4 to Northbound I-275 (FPID 445056-1 (E7R70))  
Westbound I-4 to Southbound I-275 (FPID 445056-2 (E7R70))

**Section 7 - I-275 North Corridor**  
Phase I (FPIDs 443770-1, 431821-2 (T7472))  
Future Phases (FPIDs 431821-3, 431821-4)

**Section 8 - I-4 Corridor**  
(FPID 431746-3)

**Section 9 - I-75 North Corridor**  
(FPID 419235-6)

**Section 10 - I-75 South Corridor**  
(FPID 419235-5)

**I-75/Dr Martin Luther King, Jr Blvd Interchange**  
(FPID 429251-1 (E7R26))

**I-75/Big Bend Rd Interchange**  
(FPID 424513-3 (E7R21))

Updated 01/20/2023



All projects have received PD&E study approval except Sections 9 & 10



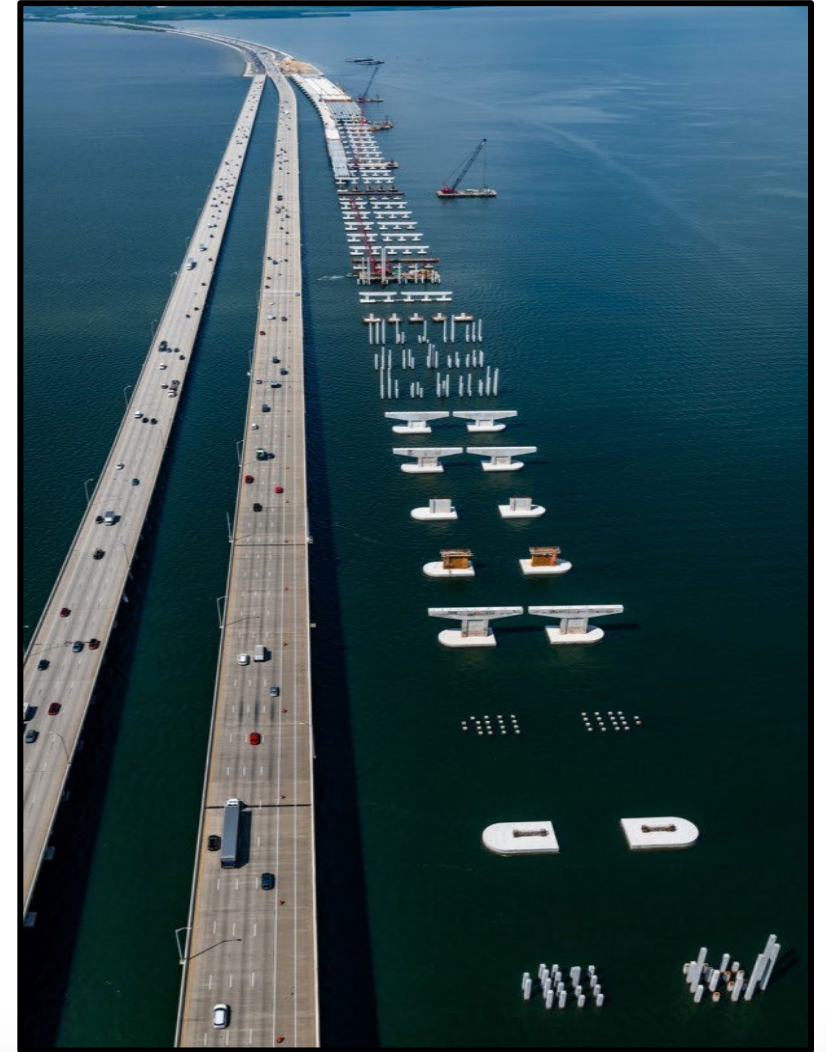
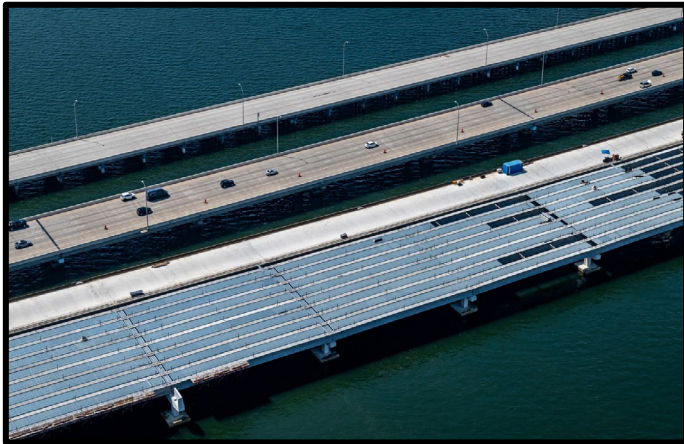
## Tampa's Westshore Interchange

- New design includes flyover ramps providing better traffic operations as well as the replacement of the existing loop ramp from westbound SR 60 to northbound I-275.
- Design will also accommodate future transit within the median of I-275
- Construction activities are anticipated to begin in 2024
- Anticipated completion in fall 2031



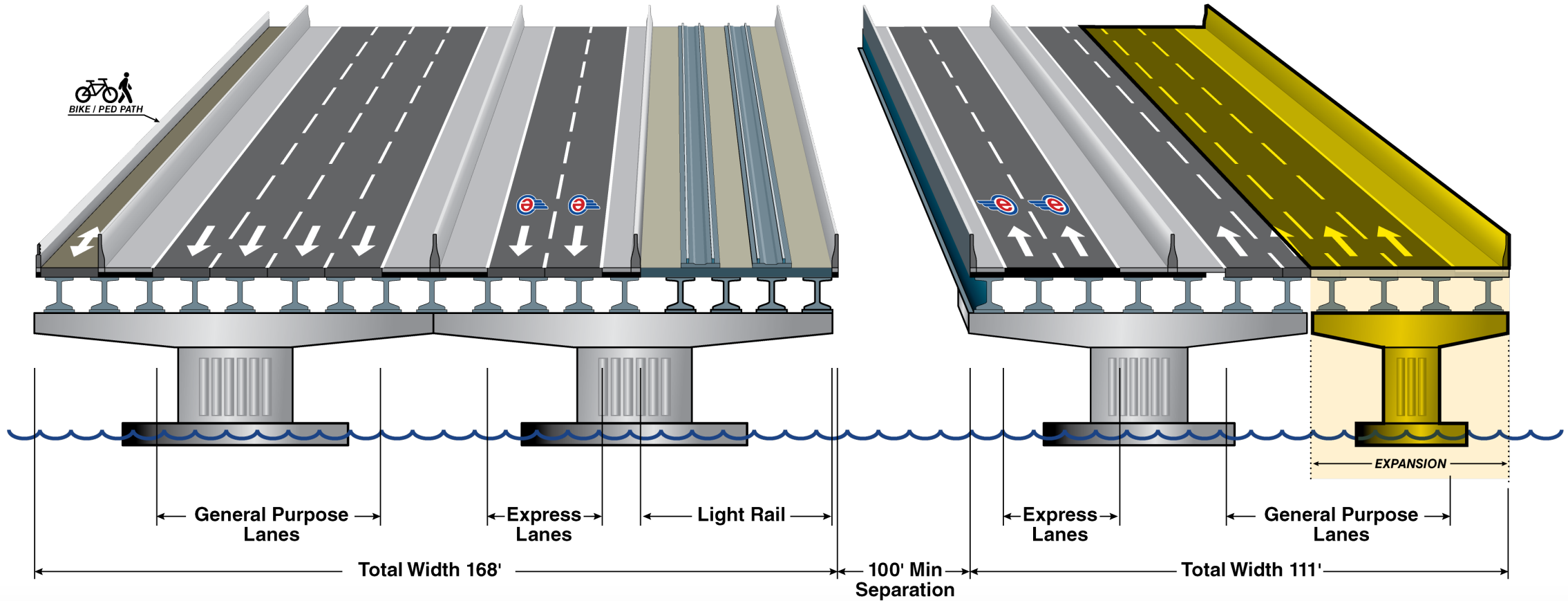
## Howard Frankland Bridge

- State Construction Cost: \$865.3 million
- Construction began in fall 2020
- Anticipated completion in late 2025



**Southbound Bridge with Express Lanes and Rail Transit**

**Northbound Widened to Outside to Accommodate Express Lanes**





## Gateway Expressway – Toll Roads

- Construction Cost: \$595 million
- Anticipated completion in early 2024

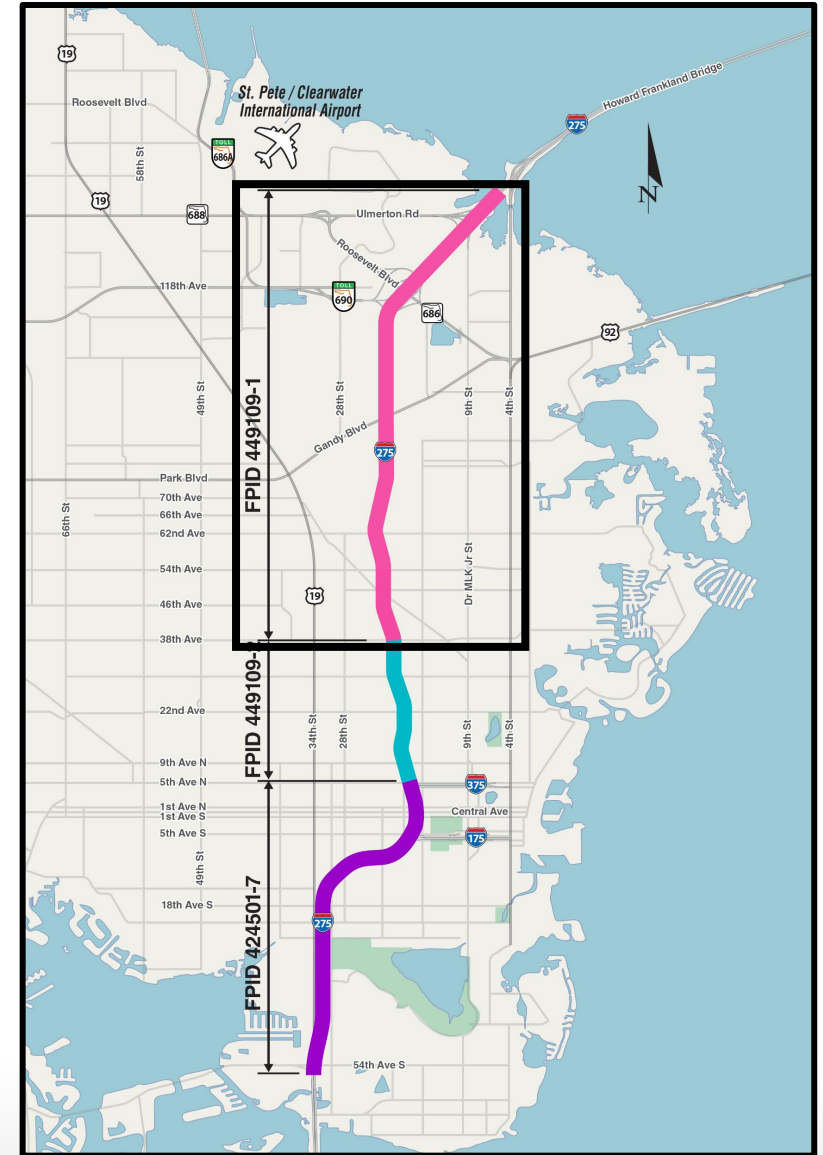
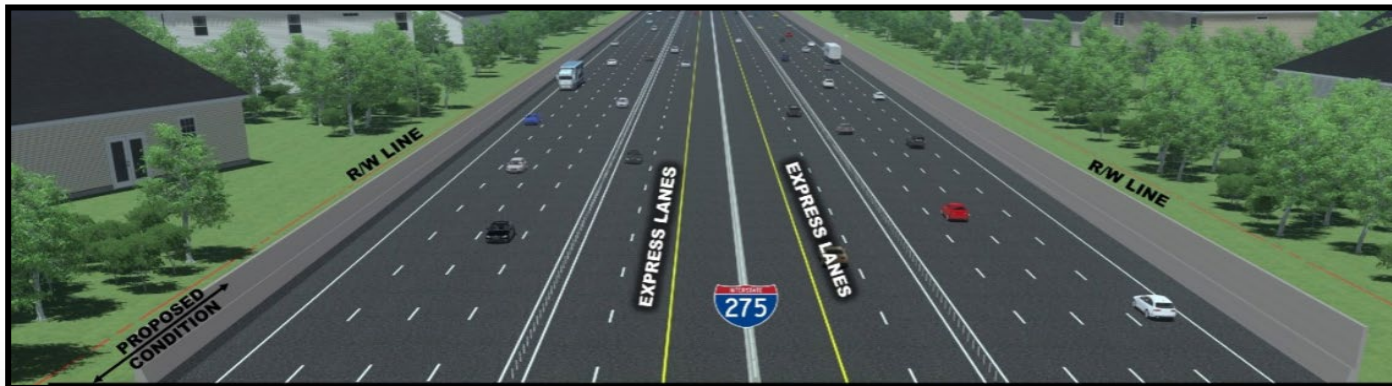


*New SR 686A from new SR 690* 



## I-275 from 38<sup>th</sup> Ave N to 4<sup>th</sup> St N *FPID 449109-1 (Moving Florida Forward)*

- Providing two buffer-separated express lanes in each direction
- **Length:** 7.5 miles
- **Design:** \$22.1 million (FY 22 & 24)
- **Construction Estimate:** \$339 million (FY 25)





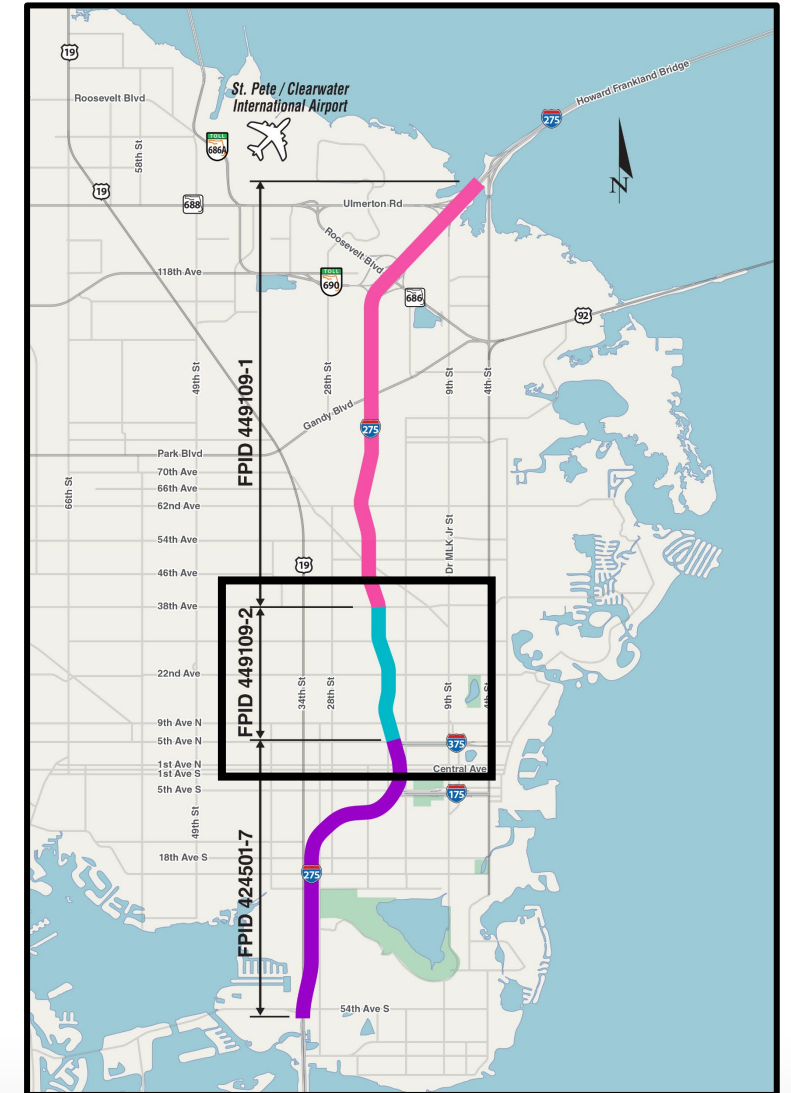
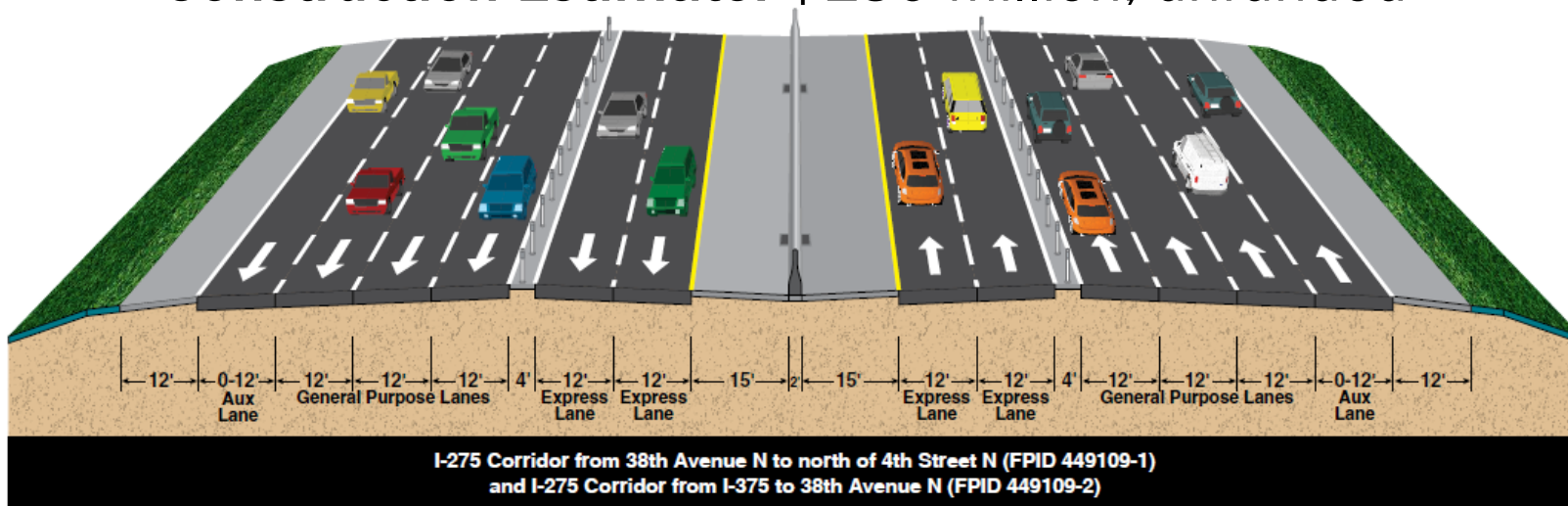


- - - - - Proposed 22' Right-of-Way Noise Barrier
- - - - - Proposed 8' Shoulder Noise Barrier
- Existing Right-of-Way Noise Barrier to Remain



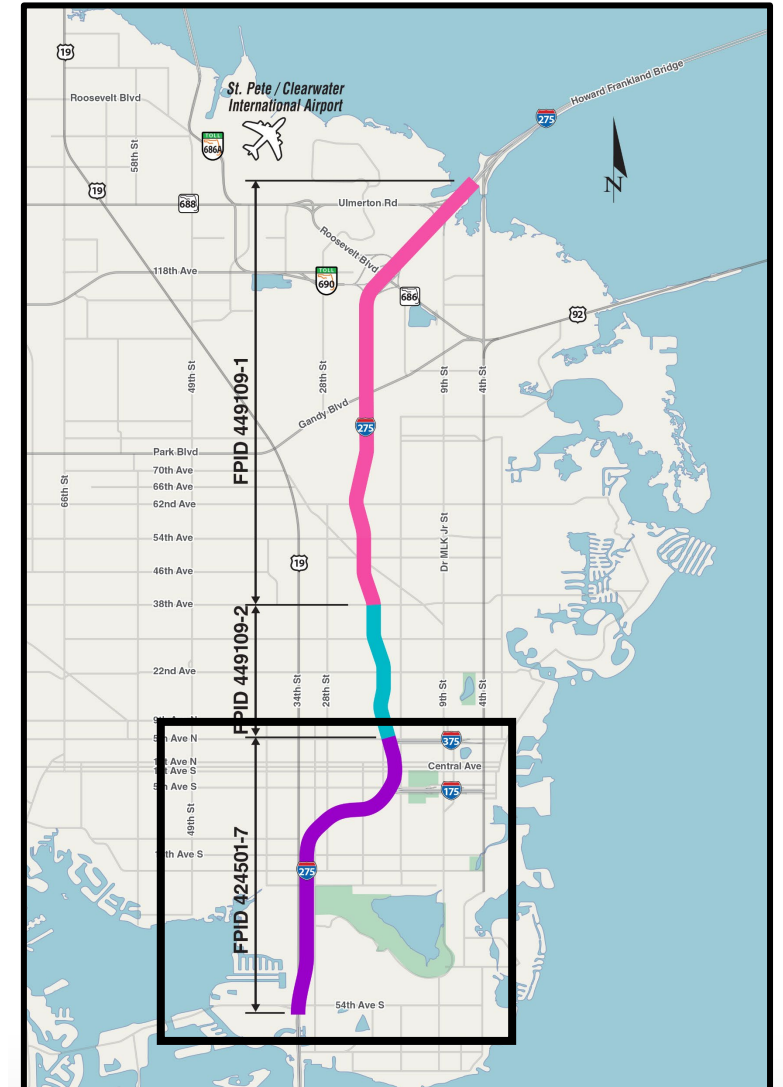
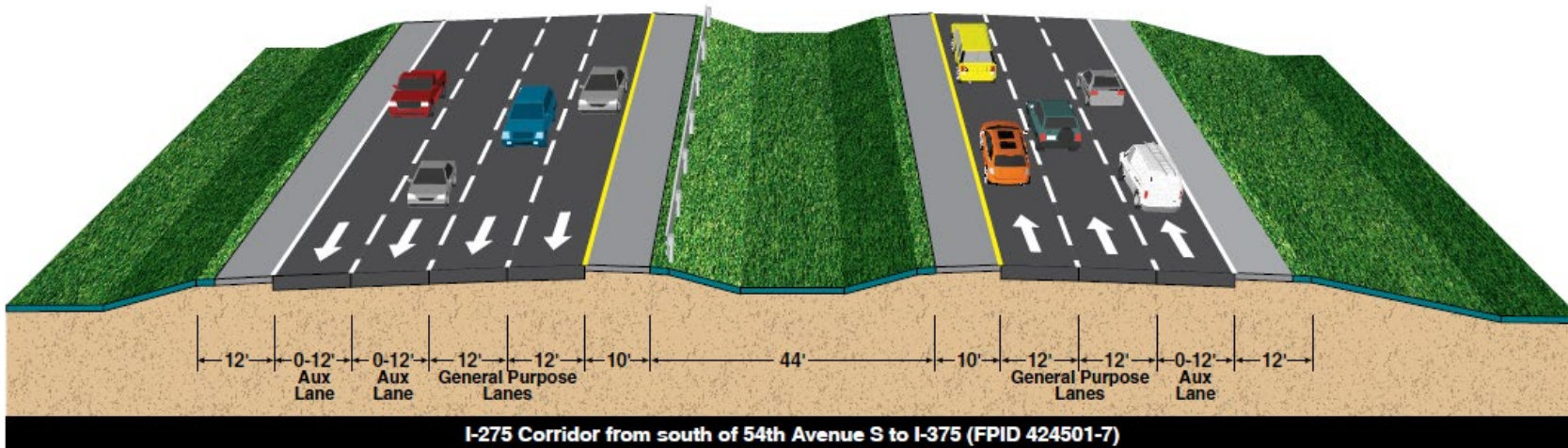
## I-275 from I-375 to 38<sup>th</sup> Ave N *FPID 449109-2*

- Length: 2 miles
- Design: \$17 million (FY 22 to FY 25)
- ROW: \$20 million (FY 25)
- Construction Estimate: \$130 million, unfunded



## I-275 from 54<sup>th</sup> Ave S to I-375 *FPID 424501-7 (Lane Continuity)*

- Length: 4.5 miles
- ROW: No ROW anticipated
- Construction Estimate: \$98.9 million

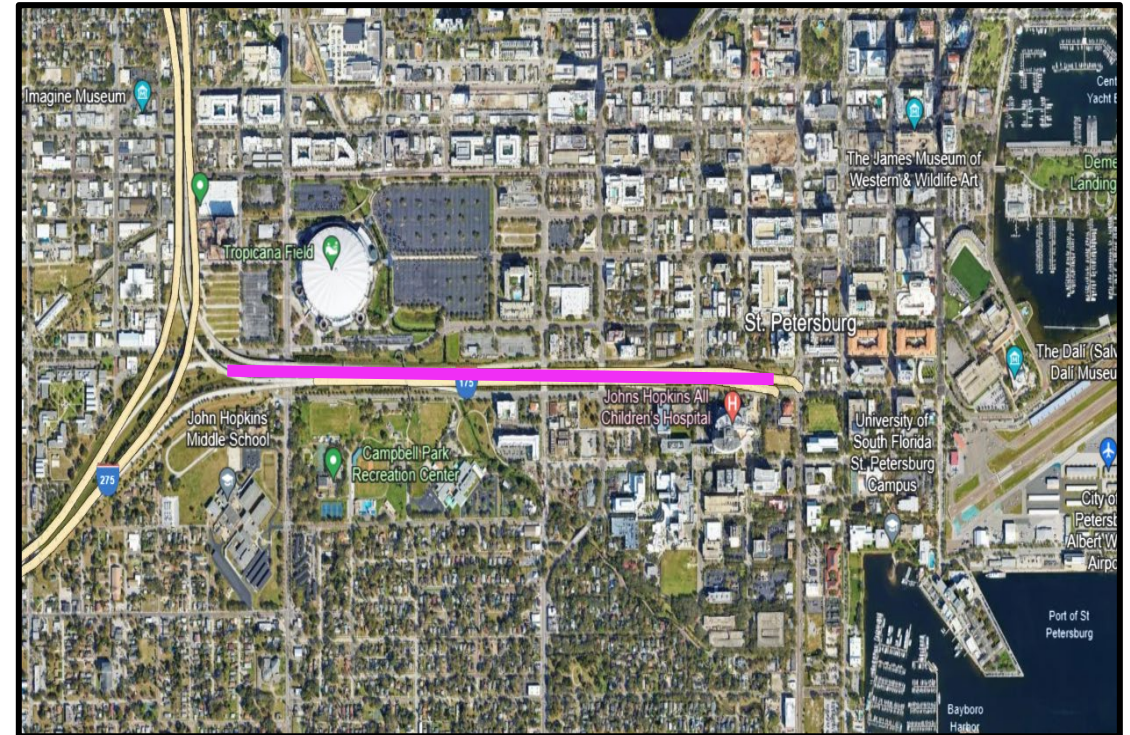




# I-175 Modifications Study

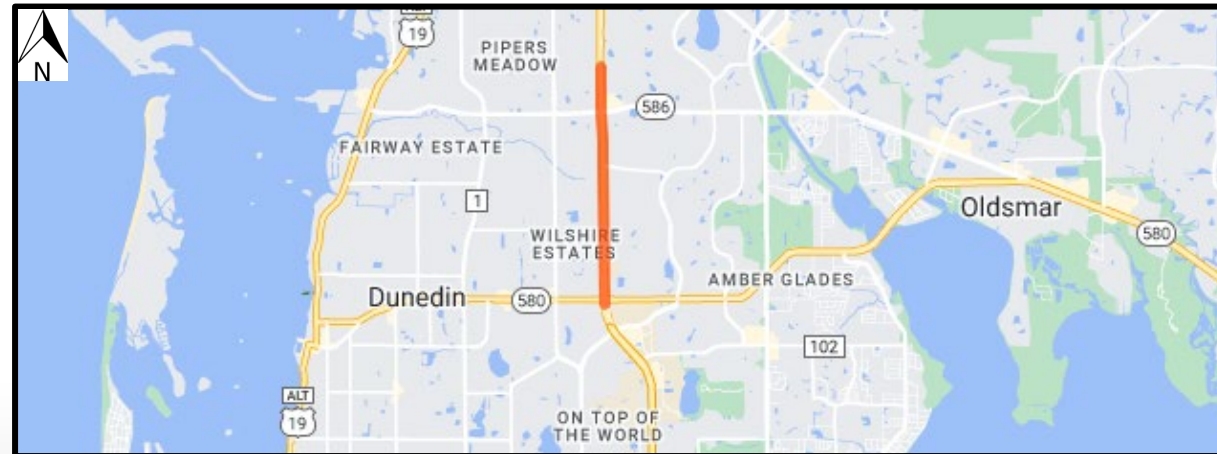
FDOT has committed to studying 3 alternatives:

- **Viaduct:** Reduce footprint by elevating I-275 to allow for more space utilization under the interstate
- **Boulevard:** Remove the interstate to create an at-grade roadway
- **No-Build**



## US 19 Frontage Roads & New Interchanges

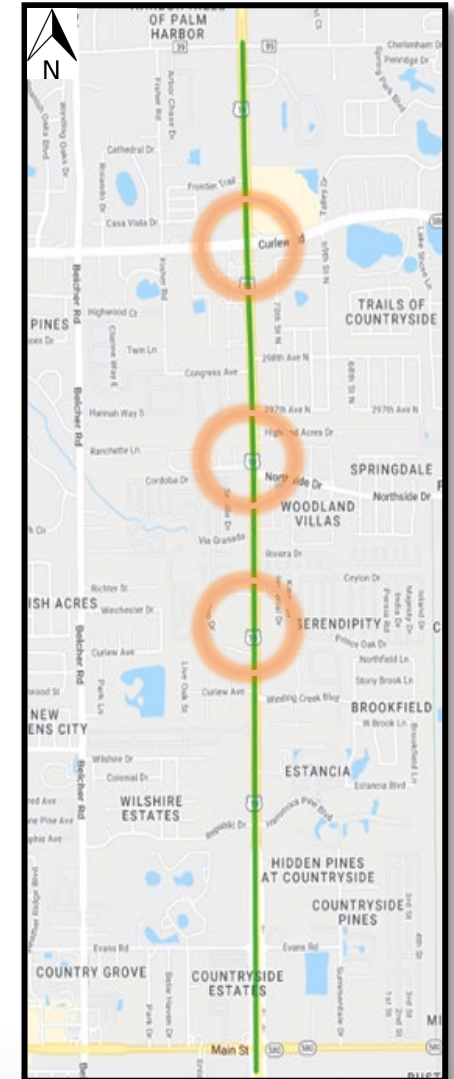
- US 19 is a 34-mile highway extending from Tarpon Springs to St. Petersburg
- US 19 is the most heavily traveled arterial road in Pinellas County
- US 19 is part of the Florida Strategic Intermodal System (SIS)





## US 19 (SR 55) from SR 580/Main St to CR 95

- Modifying the existing six-lane divided highway to a six-lane controlled access roadway with one-way frontage roads
- New interchanges will be added just north of Boy Scout Road and at Curlew Road
- New pedestrian underpass between Evans Road and Republic Drive
- New pedestrian bridge over US 19 at Northside Drive
- Construction Cost: \$242.6 million
- Anticipated completion in 2029



# US 19 (SR 55) Pedestrian Overpass N of Harn Blvd

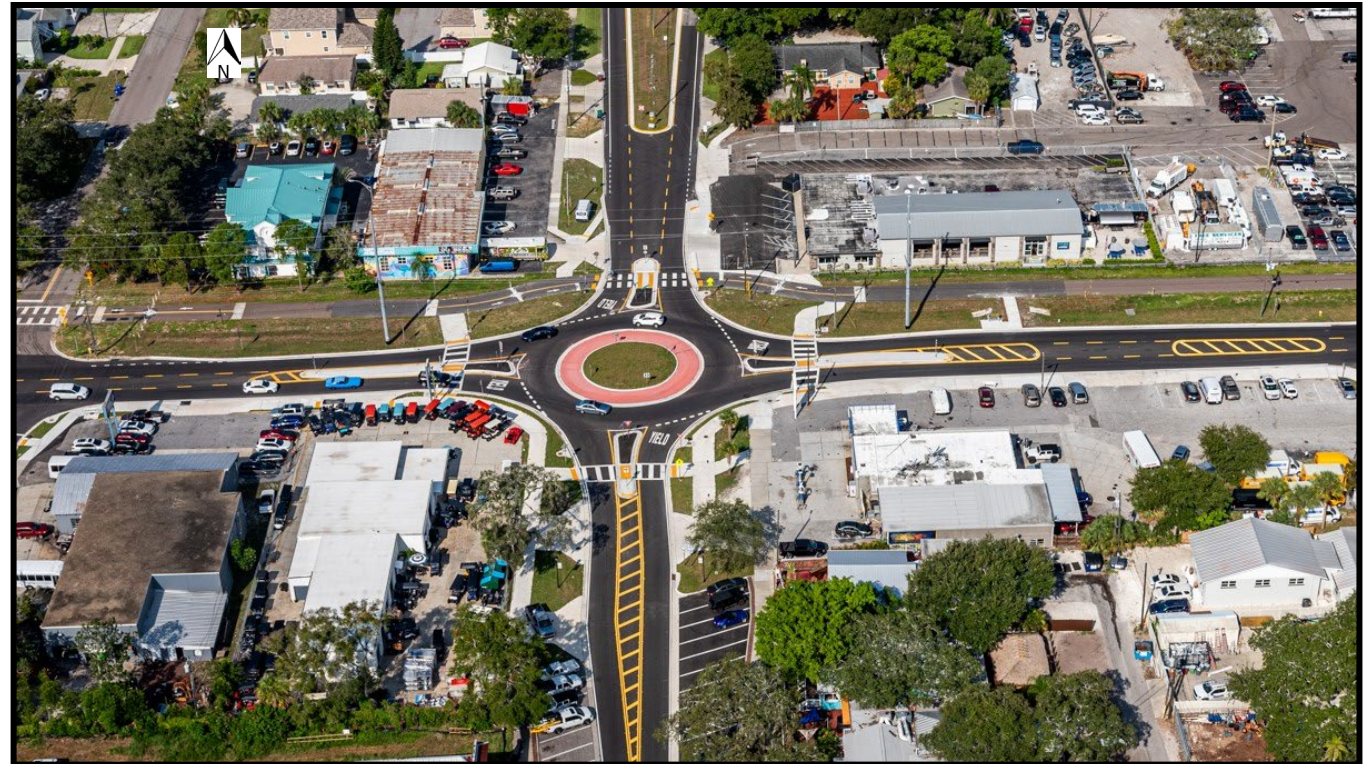
- New pedestrian overpass to provide bike/ped mobility
- Construction Cost: \$8 million
- Anticipated completion in December 2023





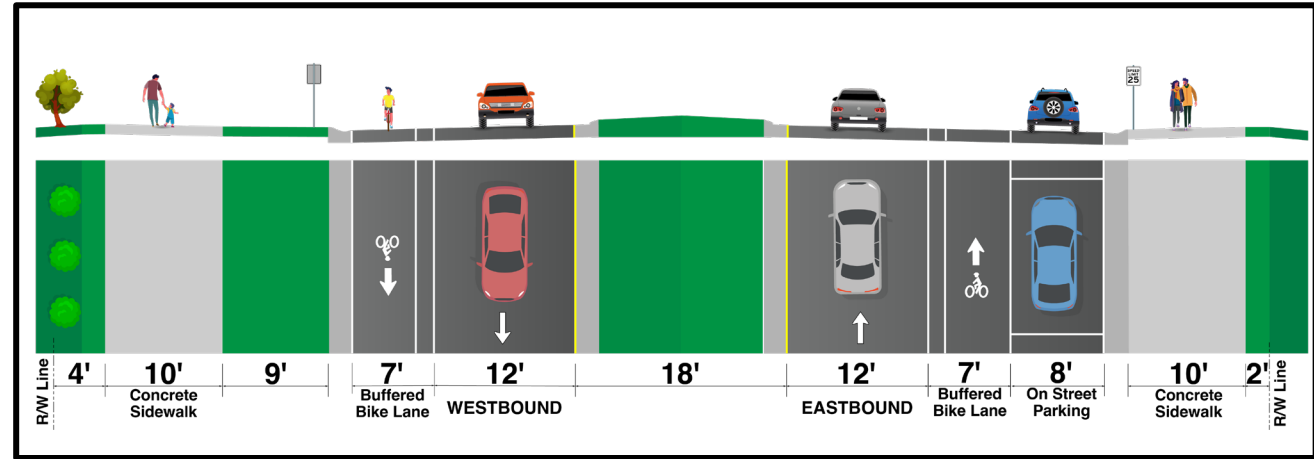
## ALT US 19/Palm Harbor Blvd at Florida Ave

- New roundabout, resurfacing, and new sidewalks
- Construction Cost: \$2.7 million
- Construction completed in September 2023

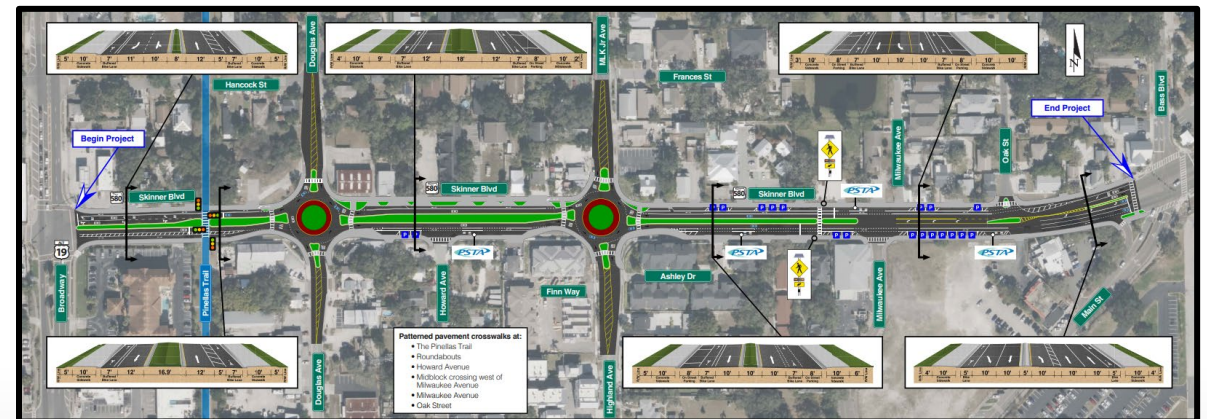


## SR 580/Skinner Blvd from ALT 19 to Bass Blvd/Main St

- One 10-foot to 12-foot travel lane in each direction
- 7-foot striped bike lanes
- 10-foot concrete sidewalks
- Raised median
- On-street parking and bus pull-out on north and south sides
- Roundabout at Douglas Avenue and Highland Avenue
- Construction anticipated to begin May 2024



Typical Section between Douglas Ave and Highland Ave





## SR 590/Drew St from N Osceola Ave to US 19

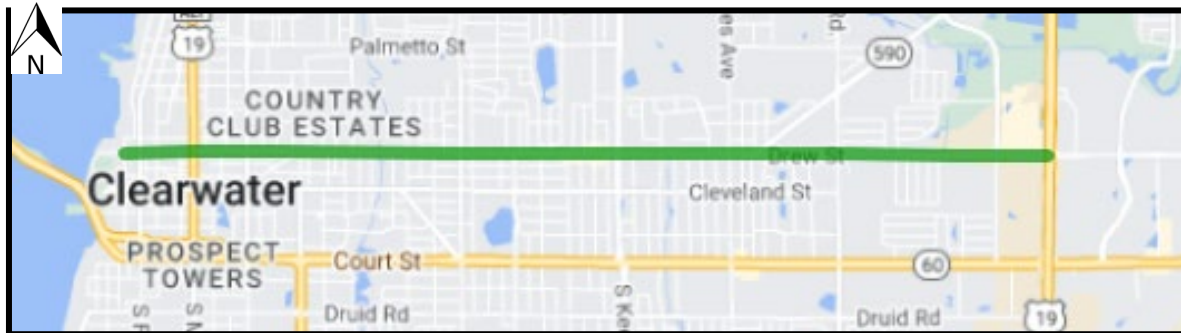
- Converting 4-lanes to 2 or 3 lanes with sidewalks, bike lanes, and other complete streets elements
- Estimated Construction Cost: \$15 million (FY 26)
- Design paused pending traffic analysis



Preferred Downtown Concept

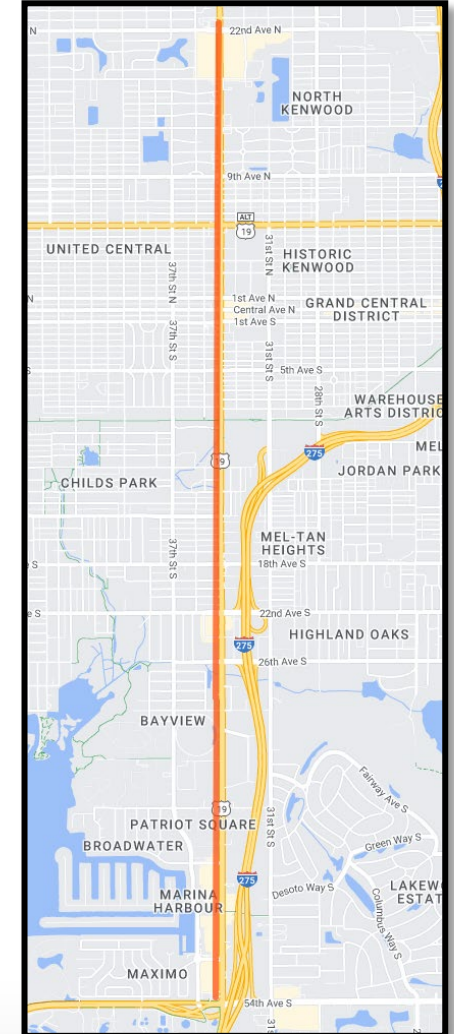
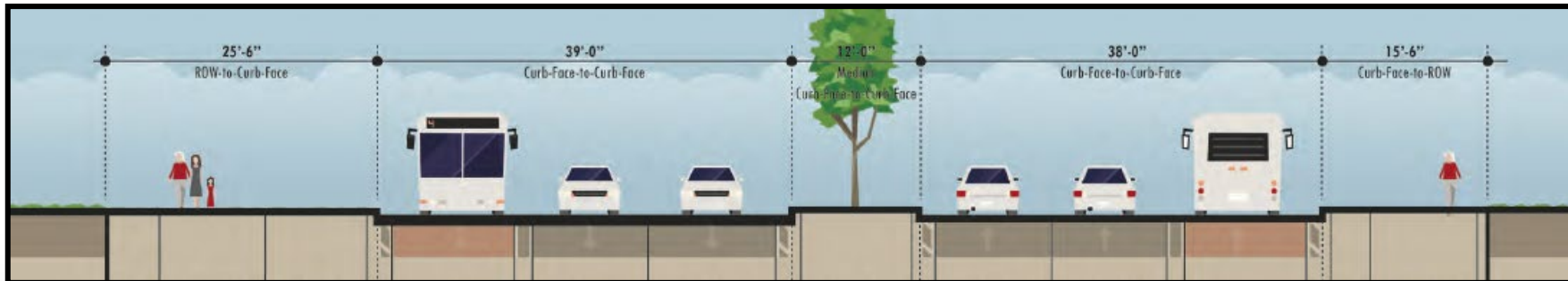


Preferred Residential Concept



## US 19/ SR 55/ 34<sup>th</sup> St S from 54<sup>th</sup> Ave S to 22<sup>nd</sup> Ave N

- Complete Street with BAT lanes, sidewalks, & crosswalks
- Lane repurposing
- New crosswalk with signal at 3<sup>rd</sup> Ave S
- PSTA Route 34
- Construction completed in late 2024





## SR 60/Courtney Campbell Causeway Pedestrian Overpass

- Pedestrian/bicycle overpass to connect Bayshore Trail & the CCC Trail
- Construction Estimate: \$10.9 million
- Design underway
- Construction anticipated to begin fall 2024



## Gandy Boulevard

- Widening with grade separation with frontage roads & trails
- Design programmed in FY 23
- ROW & Construction unfunded







**EVERY  
BICYCLIST &  
PEDESTRIAN  
IS IMPORTANT TO SOMEONE**

**Motorists: Slow Down and Share the Road Safely.**