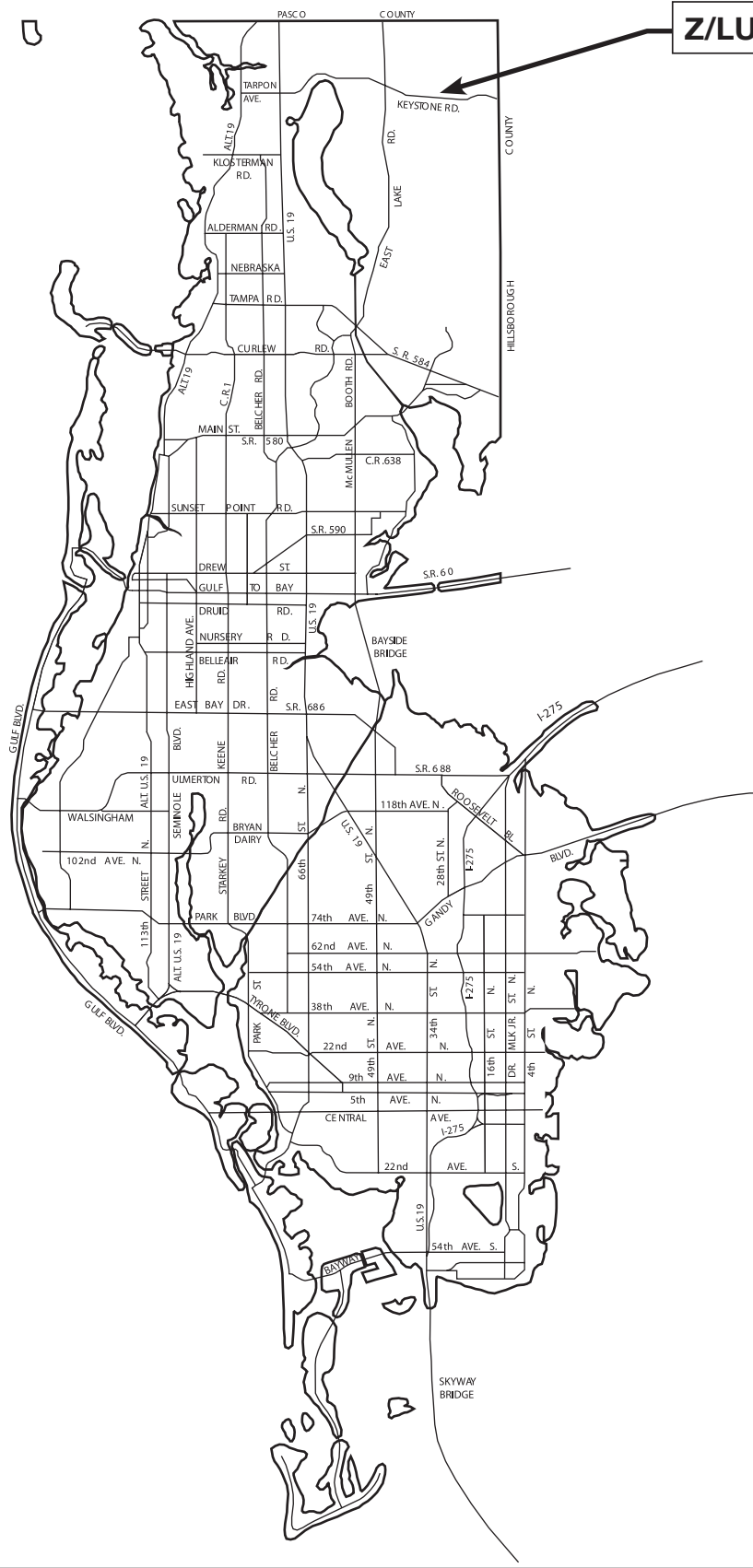


# LOCATION MAP

**Z/LU-1-1-16**



**MAP-1**

**Z/LU-1-1-16**

**Zoning** From: A-E-W, Agricultural Estate Residential-Wellhead Protection Overlay  
 To: IL-W -CO, Institutional Limited-Wellhead Protection Overlay-Conditional Overlay  
**Land Use** From: Residential Rural  
 To: Institutional

Parcel I.D. 11/27/16/00000/340/0100, 0210 & 0200  
 Prepared by: Pinellas County Planning Department November 2015

Conditional Overlay limiting the use of the property to a private school and related accessory uses for a maximum number of 400 students, and limiting the maximum building height to 35 feet.





**Z/LU-1-1-16**

**Zoning** From: A-E-W, Agricultural Estate Residential-Wellhead Protection Overlay  
 To: IL-W -CO, Institutional Limited-Wellhead Protection Overlay-Conditional Overlay  
**Land Use** From: Residential Rural  
 To: Institutional

Parcel I.D. 11/27/16/00000/340/0100, 0210 & 0200  
 Prepared by: Pinellas County Planning Department November 2015

Conditional Overlay limiting the use of the property to a private school and related accessory uses for a maximum number of 400 students, and limiting the maximum building height to 35 feet.





MAP-3

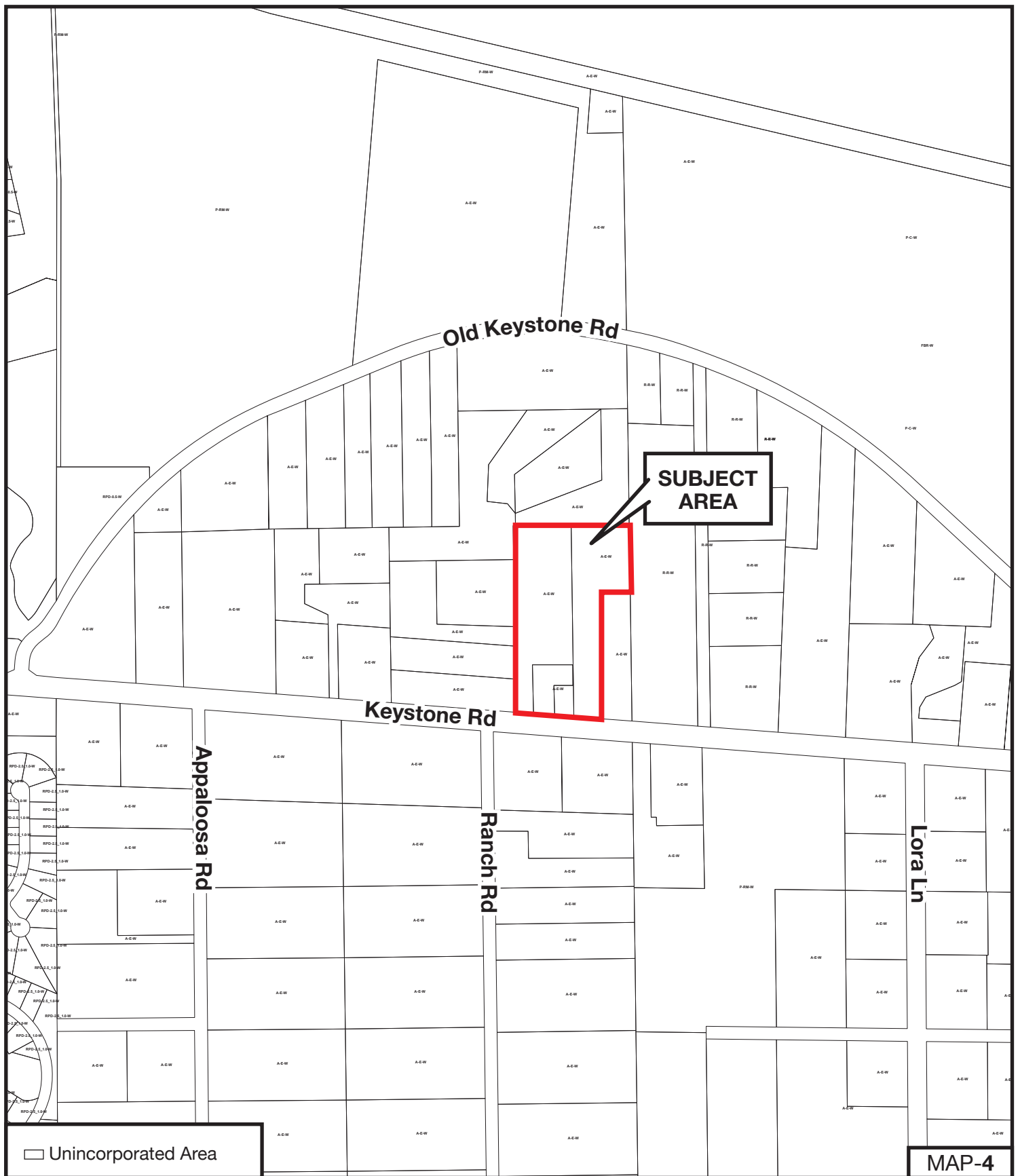
**Z/LU-1-1-16**

**Zoning** From: A-E-W, Agricultural Estate Residential-Wellhead Protection Overlay  
 To: IL-W -CO, Institutional Limited-Wellhead Protection Overlay-Conditional Overlay  
**Land Use** From: Residential Rural  
 To: Institutional

Parcel I.D. 11/27/16/00000/340/0100, 0210 & 0200  
 Prepared by: Pinellas County Planning Department November 2015

Conditional Overlay limiting the use of the property to a private school and related accessory uses for a maximum number of 400 students, and limiting the maximum building height to 35 feet.





**Z/LU-1-1-16**

**Zoning** From: A-E-W, Agricultural Estate Residential-Wellhead Protection Overlay  
 To: IL-W -CO, Institutional Limited-Wellhead Protection Overlay-Conditional Overlay  
**Land Use** From: Residential Rural  
 To: Institutional

Parcel I.D. 11/27/16/00000/340/0100, 0210 & 0200  
 Prepared by: Pinellas County Planning Department November 2015

Conditional Overlay limiting the use of the property to a private school and related accessory uses for a maximum number of 400 students, and limiting the maximum building height to 35 feet.





**FUTURE LAND USE**  
**PINELLAS COUNTY, FLORIDA**

**Residential**  
 Residential Rural

**Public / Semi-Public**  
 Preservation  
 Preservation-Resource Management  
 Recreation / Open-Space  
 Institutional  
 Resource Management Overlay-2

**PROPOSED FUTURE LAND USE**

MAP-5

**Z/LU-1-1-16**

**Zoning** From: A-E-W, Agricultural Estate Residential-Wellhead Protection Overlay  
 To: IL-W -CO, Institutional Limited-Wellhead Protection Overlay-Conditional Overlay

**Land Use** From: Residential Rural  
 To: Institutional

Conditional Overlay limiting the use of the property to a private school and related accessory uses for a maximum number of 400 students, and limiting the maximum building height to 35 feet.



Parcel I.D. 11/27/16/00000/340/0100, 0210 & 0200  
 Prepared by: Pinellas County Planning Department November 2015