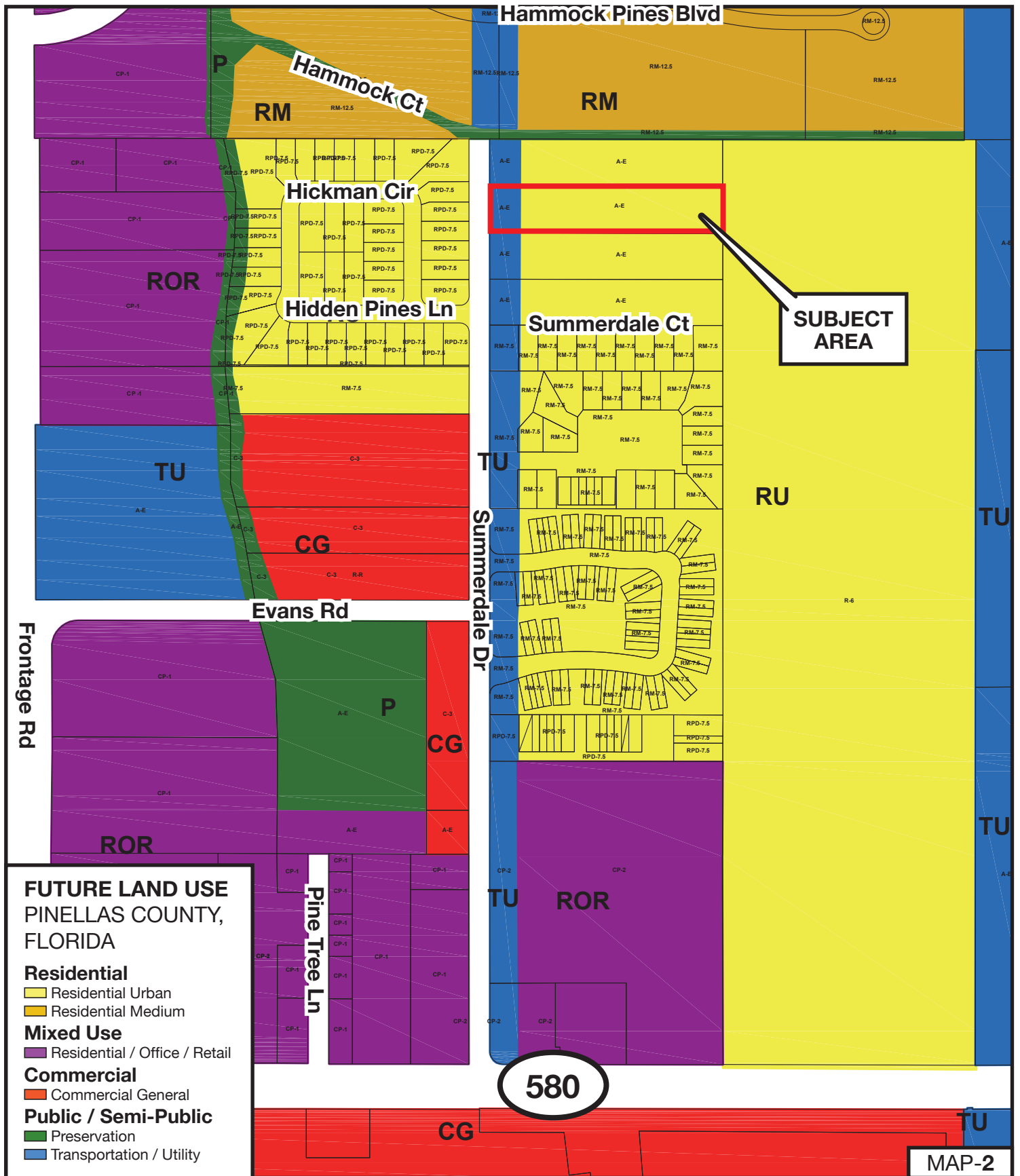


LOCATION MAP



MAP-1

<p>Z-31-11-15</p>	<p>Zone From: A-E, Agricultural Estate Residential To: RPD-7.5, Residential Planned Development, 7.5 units</p>		
<p>Parcel I.D. 30/28/16/07236/000/0080 Prepared by: Pinellas County Planning Department September 2015</p>			



FUTURE LAND USE
PINELLAS COUNTY,
FLORIDA

Residential

- Residential Urban
- Residential Medium

Mixed Use

- Residential / Office / Retail

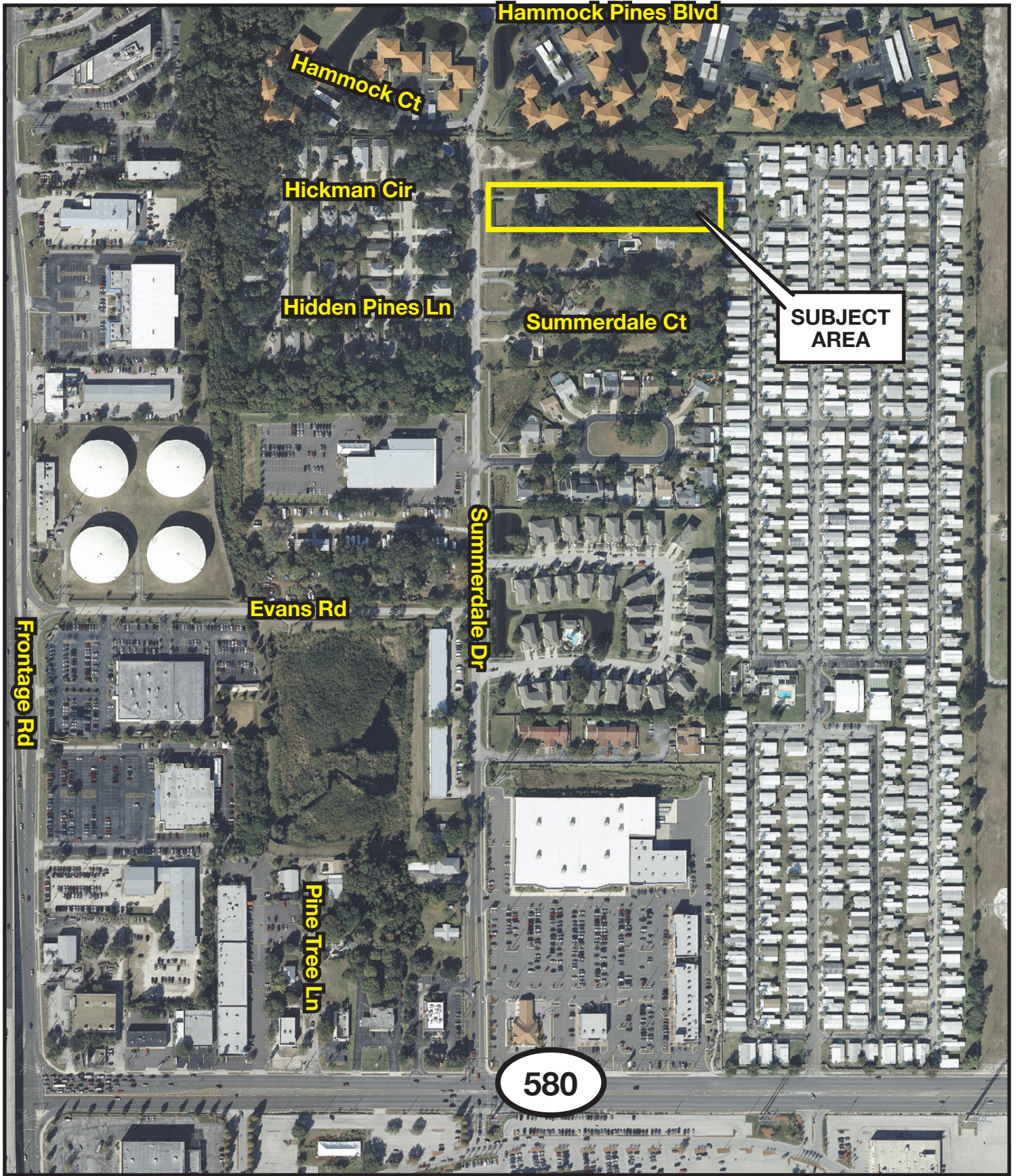
Commercial

- Commercial General

Public / Semi-Public

- Preservation
- Transportation / Utility

Z-31-11-15	Zone From: A-E, Agricultural Estate Residential To: RPD-7.5, Residential Planned Development, 7.5 units		
Parcel I.D. 30/28/16/07236/000/0080 Prepared by: Pinellas County Planning Department September 2015		MAP-2	



Z-31-11-15

Zone From: A-E, Agricultural Estate Residential
To: RPD-7.5, Residential Planned Development, 7.5 units

Parcel I.D. 30/28/16/07236/000/0080

Prepared by: Pinellas County Planning Department September 2015



Hammock Pines Blvd

RM-12.5

CP-1

Hammock Ct

RM-12.5

RM-12.5

RM-12.5

RM-12.5

RM-12.5

CP-1

CP-1

CP-1

CP-1

CP-1

CP-1

CP-1

CP-1

CP-1

CP-1

CP-1

CP-1

CP-1

Hickman Cir

A-E

A-E

A-E

A-E

A-E

A-E

A-E

A-E

Summerdale Ct

SUBJECT AREA

RM-7.5

RM-7.5

RM-7.5

RM-7.5

RM-7.5

RM-7.5

RM-7.5

RM-7.5

RM-7.5

RM-7.5

RM-7.5

RM-7.5

RM-7.5

RM-7.5

RM-7.5

RM-7.5

RM-7.5

RM-7.5

RM-7.5

RM-7.5

RM-7.5

RM-7.5

RM-7.5

RM-7.5

RM-7.5

RM-7.5

RM-7.5

RM-7.5

RM-7.5

RM-7.5

RM-7.5

RM-7.5

RM-7.5

RM-7.5

RM-7.5

RM-7.5

RM-7.5

RM-7.5

RM-7.5

RM-7.5

RM-7.5

RM-7.5

RM-7.5

RM-7.5

RM-7.5

RM-7.5

RM-7.5

RM-7.5

RM-7.5

RM-7.5

RM-7.5

RM-7.5

RM-7.5

RM-7.5

RM-7.5

RM-7.5

RM-7.5

RM-7.5

RM-7.5

RM-7.5

RM-7.5

RM-7.5

RM-7.5

RM-7.5

RM-7.5

RM-7.5

RM-7.5

RM-7.5

RM-7.5

RM-7.5

RM-7.5

RM-7.5

RM-7.5

RM-7.5

RM-7.5

RM-7.5

RM-7.5

RM-7.5

RM-7.5

RM-7.5

RM-7.5

RPD-7.5

RPD-7.5

RPD-7.5

RPD-7.5

RPD-7.5

RPD-7.5

RPD-7.5

RPD-7.5

RPD-7.5

RPD-7.5

RPD-7.5

RPD-7.5

RPD-7.5

RPD-7.5

RPD-7.5

RPD-7.5

CP-2

CP-2

CP-2

CP-2

CP-2

CP-2

CP-2

CP-2

CP-2

CP-2

CP-2

CP-2

CP-2

CP-2

CP-2

CP-2

CP-2

CP-2

CP-2

CP-2

CP-2

CP-2

CP-2

CP-2

Evans Rd

Summerdale Dr

Frontage Rd

Pine Tree Ln

580

Unincorporated Area

MAP-4

Z-31-11-15

Zone From: A-E, Agricultural Estate Residential
To: RPD-7.5, Residential Planned Development, 7.5 units



Parcel I.D. 30/28/16/07236/000/0080

Prepared by: Pinellas County Planning Department September 2015