

Medical Examiner

Department Director: Dr. Jon R. Thogmartin, Medical Examiner

OMB Budget Analyst(s): Toni Merrill

OMB Capital Analyst(s): Gabriella Gonzalez

Department Purpose

The Medical Examiner safeguards the rights of each citizen who dies in Pinellas County by determining the cause and manner of death according to the responsibilities and obligations in Chapter 406, Florida Statutes. The Medical Examiner's Office provides both forensic medicine services (investigation of sudden, unexpected, or suspicious death) and forensic laboratory services (chemical and drug analyses) to Pinellas County on a contractual basis.

Budget Summary

0001- General Fund

| | FY23 Actual | FY24 Actual | FY25 Actual | FY26 Budget | FY27 Budget |
|--------------------|--------------------|--------------------|--------------------|--------------------|--------------------|
| Personnel Services | \$245,355 | \$265,301 | \$342,143 | \$433,910 | \$422,360 |
| Operating Expenses | \$7,597,365 | \$8,097,000 | \$8,735,789 | \$9,048,680 | \$9,363,060 |
| Capital Outlay | \$236,878 | \$176,856 | \$550,830 | \$12,500 | \$20,500 |
| Grand Total | \$8,079,598 | \$8,539,156 | \$9,628,762 | \$9,495,090 | \$9,805,920 |

| | FY23 Actual | FY24 Actual | FY25 Actual | FY26 Budget | FY27 Budget |
|-----|-------------|-------------|-------------|-------------|-------------|
| FTE | 2.0 | 2.0 | 3.0 | 3.0 | 3.0 |

Budget Drivers

The FY27 Budget for the Medical Examiner, which is fully funded by the General Fund, increases \$311,000 (3.3%) to \$9.806M

Personnel Services decrease by \$11,600 (2.7%) from FY26 to \$422,000. Staffing has remained at 3 FTE (County Employees) and includes a reclassification of one DNA Analysis position to a DNA Analyst Lead CODIS Administrator.

Operating expenses increase by \$315,000 (3.5%) to \$9.363M. This includes a \$383,000 (4.3%) increase to the Medical Examiner contract, bringing it to \$9.217M, primarily driven by higher personnel costs and supply expenses. The increase is partially offset by postponing BTS PC replacements from FY27 to FY28

User Fees

Eighteen fees charged to non-Pinellas County jurisdictions for Medical Examiner services will increase in FY27. The increase of these fee's helps to reduce Dr. Thogmartin's professional service charges to Pinellas County.

CIP Topics for Discussion

Governmental projects in the Capital Improvement Program are scheduled for discussion at the June 12th Budget Information Session

FY26 Accomplishments

Medical Examiner

- Continued accreditation by the National Association of Medical Examiners
- 100% of Pathologist positions filled – all board certified (Reduced staff by one additional pathologist position)
- 99% of all autopsies are completed within 24 hours of receipt of decedent remains.
- 99% of all cremation approvals are completed within 12 hours of the funeral home's request.
- Implemented the electronic body scanning procedure to increase efficiency in death investigations

Forensic Lab

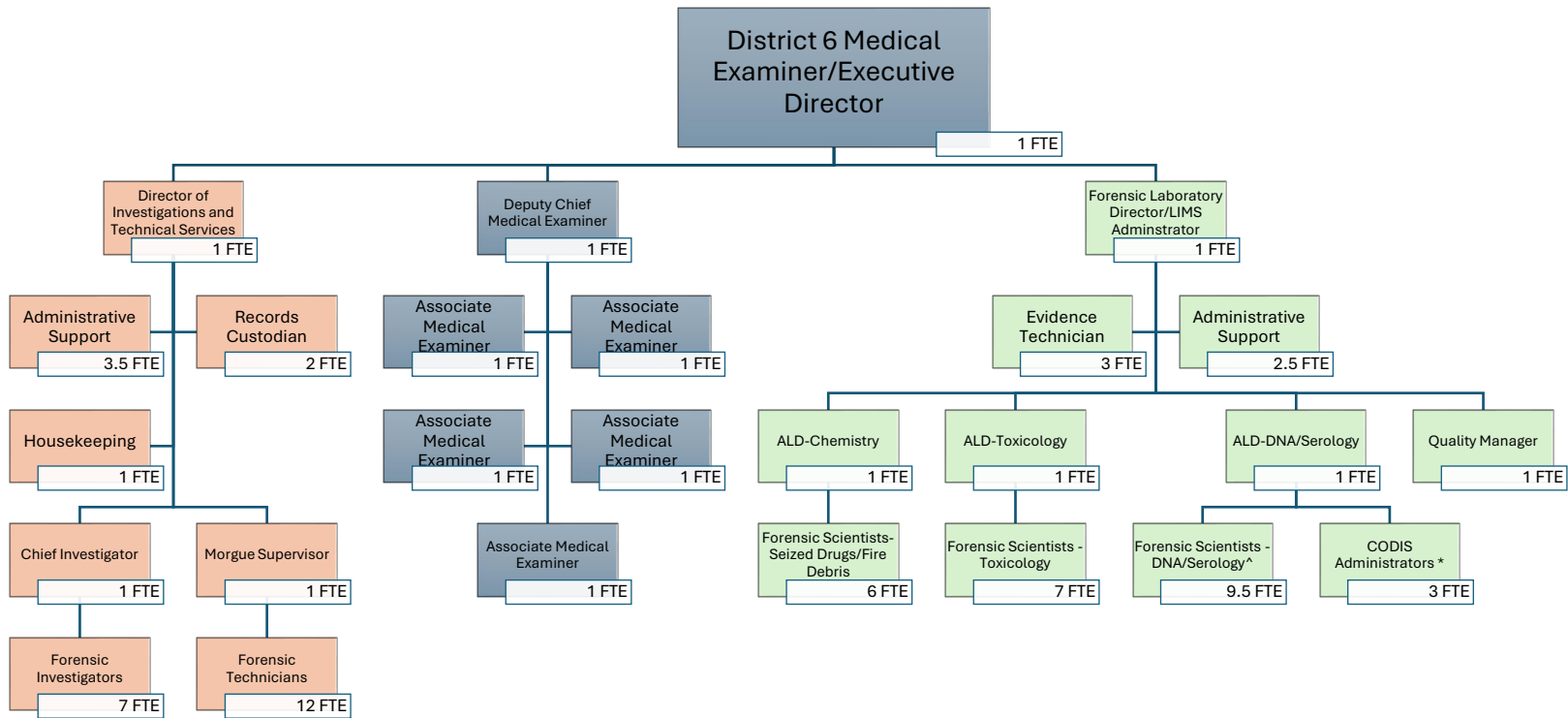
- Received American Society of Crime Laboratory Directors' Maximus award for the 5th consecutive year. This is awarded to the most fiscally and operationally efficient crime laboratories in the world.
- Maintained Accreditation to ISO/EIC-17025, which evaluates the quality of forensic science programs.
- Continued to implement Lean Six Sigma philosophies to increase efficiencies, reduce costs, and maintain high quality
- All eligible forensic scientists certified by external certifying bodies
- Completed over 9,000 requests for forensic analysis with an average turnaround time of 25 days

Work Plan

Medical Examiner does not utilize the County workplan.

Attachments:

1. Organizational Chart (p.3)
2. FY27 Medical Examiner Budget Request by Fund - Expenditures (pgs.4-5)
3. User Fees Report (pg.6)
4. Budget Submittal Memo (pgs. 7-10)



Pinellas County
Standard Detail
Program: 6082-Medical Examiner-District Six
Version: County Admin Review

Expenditures

| | FY23 Actual | FY24 Actual | FY25 Actual | FY26 Budget | FY26 Estimate | FY27 Request | Budget to Budget Change | Budget to Budget % Change |
|---------------------------------------------|------------------------|------------------------|------------------------|------------------------|--------------------------|-------------------------|----------------------------------------|------------------------------------------|
| 5110001 - Executive Salaries | 153,409 | 160,014 | 208,044 | 259,150 | 249,840 | 251,900 | (7,250) | -2.80% |
| 5210001 - FICA Taxes | 10,722 | 11,430 | 14,887 | 19,810 | 18,850 | 19,280 | (530) | -2.68% |
| 5220001 - Retirement Contributions | 44,236 | 53,618 | 69,907 | 92,900 | 87,640 | 88,770 | (4,130) | -4.45% |
| 5230001 - Hlth,Life,Dntl,Std,Ltd | 36,988 | 40,239 | 49,305 | 62,050 | 61,600 | 62,410 | 360 | 0.58% |
| 5310001 - Professional Services | 7,270,603 | 7,806,970 | 8,312,480 | 8,834,680 | 8,834,680 | 9,217,320 | 382,640 | 4.33% |
| 5340001 - Other Contractual Svcs | 26,999 | 44,000 | 0 | 0 | 0 | 0 | 0 | 0.00% |
| 5460001 - Repair&Maintenance Svcs | 29,054 | 32,546 | 71,388 | 0 | 0 | 0 | 0 | 0.00% |
| 5490001 - Othr Current Chgs&Obligat | (233) | 0 | 0 | 0 | 0 | 0 | 0 | 0.00% |
| 5496551 - Intgv Sv-Risk Financing | 38,870 | 24,680 | 33,440 | 25,740 | 0 | 25,740 | 0 | 0.00% |
| 5510001 - Office Supplies Exp | 2,369 | 0 | 1,798 | 0 | 0 | 0 | 0 | 0.00% |
| 5520001 - Operating Supplies Exp | 165,028 | 153,096 | 7,740 | 164,670 | 164,500 | 120,000 | (44,670) | -27.13% |
| 5520004 - Oper. Supplies-Lab | 29,316 | 7,146 | 228,130 | 0 | 0 | 0 | 0 | 0.00% |
| 5520091 - Equipment purchases under \$5,000 | 0 | 2,220 | 0 | 0 | 0 | 0 | 0 | 0.00% |
| 5520098 - PC Purchases under \$5,000 | 35,359 | 26,342 | 36,708 | 23,590 | 0 | 0 | (23,590) | -100.00% |
| 5520202 - On-Prem Software | 0 | 0 | 44,106 | 0 | 0 | 0 | 0 | 0.00% |
| 5640001 - Machinery And Equipment | 236,878 | 176,856 | 550,830 | 12,500 | 12,500 | 20,500 | 8,000 | 64.00% |
| 5999999 - Invoices Pend Acct Distribution | 0 | 0 | 0 | 0 | 0 | 0 | 0 | 0.00% |
| Expenditures Total | 8,079,598 | 8,539,156 | 9,628,762 | 9,495,090 | 9,429,610 | 9,805,920 | 310,830 | 3.27% |
| | (8,079,598) | (8,539,156) | (9,628,762) | (9,495,090) | (9,429,610) | (9,805,920) | (310,830) | -3.27% |

Pinellas County
Standard Detail
Fund: 0001 - General Fund
Version: County Admin Review

Expenditures

| | FY23 Actual | FY24 Actual | FY25 Actual | FY26 Budget | FY26 Estimate | FY27 Request | Budget to Budget Change | Budget to Budget % Change |
|---------------------------------------------|--------------------|--------------------|--------------------|--------------------|--------------------|--------------------|-------------------------------|---------------------------------|
| 5110001 - Executive Salaries | 153,409 | 160,014 | 208,044 | 259,150 | 249,840 | 251,900 | (7,250) | -2.80% |
| 5210001 - FICA Taxes | 10,722 | 11,430 | 14,887 | 19,810 | 18,850 | 19,280 | (530) | -2.68% |
| 5220001 - Retirement Contributions | 44,236 | 53,618 | 69,907 | 92,900 | 87,640 | 88,770 | (4,130) | -4.45% |
| 5230001 - Hlth,Life,Dntl,Std,Ltd | 36,988 | 40,239 | 49,305 | 62,050 | 61,600 | 62,410 | 360 | 0.58% |
| 5310001 - Professional Services | 7,270,603 | 7,806,970 | 8,312,480 | 8,834,680 | 8,834,680 | 9,217,320 | 382,640 | 4.33% |
| 5340001 - Other Contractual Svcs | 26,999 | 44,000 | 0 | 0 | 0 | 0 | 0 | 0.00% |
| 5460001 - Repair&Maintenance Svcs | 29,054 | 32,546 | 71,388 | 0 | 0 | 0 | 0 | 0.00% |
| 5490001 - Othr Current Chgs&Obligat | (233) | 0 | 0 | 0 | 0 | 0 | 0 | 0.00% |
| 5496551 - Intgv Sv-Risk Financing | 38,870 | 24,680 | 33,440 | 25,740 | 0 | 25,740 | 0 | 0.00% |
| 5510001 - Office Supplies Exp | 2,369 | 0 | 1,798 | 0 | 0 | 0 | 0 | 0.00% |
| 5520001 - Operating Supplies Exp | 165,028 | 153,096 | 7,740 | 164,670 | 164,500 | 120,000 | (44,670) | -27.13% |
| 5520004 - Oper. Supplies-Lab | 29,316 | 7,146 | 228,130 | 0 | 0 | 0 | 0 | 0.00% |
| 5520091 - Equipment purchases under \$5,000 | 0 | 2,220 | 0 | 0 | 0 | 0 | 0 | 0.00% |
| 5520098 - PC Purchases under \$5,000 | 35,359 | 26,342 | 36,708 | 23,590 | 0 | 0 | (23,590) | -100.00% |
| 5520202 - On-Prem Software | 0 | 0 | 44,106 | 0 | 0 | 0 | 0 | 0.00% |
| 5640001 - Machinery And Equipment | 236,878 | 176,856 | 550,830 | 12,500 | 12,500 | 20,500 | 8,000 | 64.00% |
| 5999999 - Invoices Pend Acct Distribution | 0 | 0 | 0 | 0 | 0 | 0 | 0 | 0.00% |
| Expenditures Total | 8,079,598 | 8,539,156 | 9,628,762 | 9,495,090 | 9,429,610 | 9,805,920 | 310,830 | 3.27% |
| | (8,079,598) | (8,539,156) | (9,628,762) | (9,495,090) | (9,429,610) | (9,805,920) | (310,830) | -3.27% |

Schedule A

Fees Paid by Pasco County and outside agencies for Medical Examiner and Forensic

Laboratory Services

10/01/26

Services

| | |
|------------------------------------------|-----------------|
| <i>Autopsies-Complete (per case)</i> | <i>\$950.00</i> |
| <i>Autopsies-Head (per case)</i> | <i>\$155.00</i> |
| <i>Cases Examined (per case)</i> | <i>\$360.00</i> |
| <i>Cremation Approval (per approval)</i> | <i>\$35.00</i> |
| <i>Scene Response (per response)</i> | <i>\$190.00</i> |

Laboratory Exams and Related Services

| | |
|---------------------------------------------------------------------|------------------------|
| <i>DUI Drug Screen (per specimen type)</i> | <i>\$360.00</i> |
| <i>Alcohol Level (per specimen type/time)</i> | <i>\$115.00</i> |
| <i>Tox Drug Screen – Full (per specimen type)</i> | <i>\$230.00</i> |
| <i>Tox Drug Screen – Partial (per specimen type)</i> | <i>\$115.00</i> |
| <i>Tox Drug Quantitation (per drug)</i> | <i>\$125.00</i> |
| <i>Carbon Monoxide (per case)</i> | <i>\$50.00</i> |
| <i>Inhalants Screen and Confirmation (per specimen type)</i> | <i>\$100.00</i> |
| <i>Radiographic body scan</i> | <i>\$210.00</i> |
| <i>X-RAY -General (per image)</i> | <i>\$55.00</i> |
| <i>X-RAY -Dental (per image)</i> | <i>\$25.00</i> |
| <i>Fire Debris Analysis (per item)</i> | <i>\$155.00</i> |
| <i>Seized Drug Analysis (per item)</i> | <i>\$180.00</i> |
| <i>DNA Decedent ID - blood (per decedent)</i> | <i>\$510.00</i> |
| <i>DNA Decedent ID -tooth or bone (per decedent)</i> | <i>\$610.00</i> |
| <i>DNA STR Forensic Analysis (per item)</i> | <i>\$560.00</i> |
| <i>DNA YSTR Add-on (per item)</i> | <i>\$400.00</i> |
| <i>Rapid DNA analysis (per item)</i> | <i>\$360.00</i> |

Transport Fees

| | |
|-----------------------------------------------------------|------------------------|
| <i>Body Transport (per decedent)</i> | <i>\$220.00</i> |
| <i>Out of County Body Transport (per decedent)</i> | <i>\$300.00</i> |
| <i>Body pouch (per decedent)</i> | <i>\$55.00</i> |

Storage

| | |
|---------------------------------------------------|-----------------------|
| <i>Body Storage (per decedent/per day)</i> | <i>\$10.00</i> |
|---------------------------------------------------|-----------------------|

Date: February 28, 2026

To: Barry Burton, County Administrator

THROUGH: Chris Rose, Director, Office of Management & Budget

From: Jon R. Thogmartin, District Six Medical Examiner

Subject: Annual Budget Submission for Fiscal Year 2027 (FY27)

Statement of Submission

The Medical Examiner's annual budget submission for the upcoming fiscal year is attached. As part of this budget submission, the Medical Examiner affirms that all requirements outlined in the FY27 Budget Submittal Checklist have been thoroughly addressed. This includes providing: all necessary entries in Questica for both operating and capital project budgets, supporting detail in each account line within Questica, justification for decision packages and user fee changes, updates via SharePoint for unfunded CIP project requests, and ensuring all required documents, including revenue spreadsheets and organizational charts, are provided. Also included are both expenditures and revenues associated with awarded and/or recurring grants, identified in Questica using the assigned Project numbers. We have also undertaken due diligence to ensure the attached FY27 Annual Purchasing Plan is complete and correct.

We have ensured compliance with all guidelines to present a comprehensive and transparent budget proposal. Below, we outline the key components of our request and the methodology used to formulate it.

1. Budget Request Overview

- By Department: Medical Examiner
 - o 9,799,240
- By Fund:
 - o Fund 1: 0001 General Fund \$9,799,240

By Program:

Program A: Program 6082: Medical Examiner \$9,799,240

2. FY27 Flat Budget Calculation(s)

The flat budget for FY27 is \$9.48M in the General Fund. The difference between this amount and the FY26 Adopted Budget is the inclusion of non-recurring grant-funded capital items.

We were unable to submit a flat budget as defined by OMB. This request represents 3.5% over the flat budget calculation.

- The bulk of the ME budget (95%) derives from Professional Services provided under a contract with Pinellas County and the Medical Examiner, Jon R. Thogmartin, MD, PA. The remaining ~5% is represented by 3 employees (CODIS Administrators), grant-funded laboratory supplies and equipment, and Risk Cost Allocation.
- Flat budget amount calculation specifically excludes Salaries and Benefits of county employees. 95% of ME staff salaries and benefits are encompassed in Professional Services. Excluding the comparable categories from the Professional Services Budget results in a ~2.1% increase in the comparable flat budget calculation, with the additional increase due to projected employee cost increases (0% salaries and 7% benefits).
 - The ME decreased the professional staff to mitigate personnel costs as much as possible. One doctor and one senior toxicologist position have been eliminated.
- Forensic supplies are highly specific, with limited options for vendors and products. Between FY25 and FY26, consumable supply costs (chemicals, test kits, autopsy supplies) increased by ~17% due to various economic factors. Our primary vendors have projected an average increase of 7% for FY27. These expenses/increases are included in the Professional Services budget line item.

3. Revenue Sources for Expenditures

Specific revenue sources from grant (pass-through) funds are included in this submission.

- Grant 1 2025 DNA CEBR — \$225,835
- Grant 2 2025 Coverdell Formula – LAB - \$54,690
- Grant 3 2025 Coverdell Formula - ME - \$2000
- Grant 4 2025 Statewide Crime Lab Funding - \$225,000

4. Service Level Impacts

To ensure transparency, we have provided a detailed breakdown of service level impacts resulting from decisions made during the formulation of this budget:

Impact of New Initiatives:

- Decrease in professional staffing positions, including the elimination of one Doctor and one Senior Toxicologist position. The Medical Examiner feels that it can withstand the decrease in staffing due to the current downward trend in drug overdose deaths in the region.
 - The risks are in not maintaining these positions if the trend reverses. Replacing a forensic pathologist is difficult because there are few board-certified candidates in the field. Replacing a forensic scientist would require 6-12 months of internal training and competency testing before any contribution to casework. This would impact the timeliness of service to stakeholders, including decedent families and the criminal justice system.

7. Environmental Factors

List of internal and external factors your department is facing:

- Internal Factors:
 - Time and resources associated with training scientific staff (9-12 process)
 - Aging technology and instrumentation
- External Factors:
 - Limited pool of experienced candidates for addressing employee turnover.
 - Increase in cost of consumables, supplies, chemicals, and test kits due to economic conditions.
 - New standards and policies from regulatory organizations (accreditations, standardization, and certification)
 - Decrease in Pasco County services, thus budgetary offsets, due to the downward trend in unnatural deaths. Because Pasco County's contribution to ME services is on a per-case basis rather than a value-based delivery model, the sharp downturn in deaths (a societal positive) results in an unbalanced FY26 budget.
 - This is being addressed with a proposed increase in the FY27 Fee for Service Schedule in the Pasco County Contract for Medical Examiner Services.

We remain committed to delivering high-quality services to our community while maintaining fiscal responsibility. Should you have any questions or require additional information, please do not hesitate to contact Reta Newman, Director, rtnewman@pinellas.gov.

Thank you for your consideration.

Sincerely,

Jon R Thogmartin, MD, PA

District Six Medical Examiner/Executive Director

Pinellas County Forensic Science Center

Enclosed Attachments

- FY27 Department Organizational Chart
- FY27 Revenue Projections Worksheet

cc: Matt Spoor, Assistant County Administrator
Toni Merrill, OMB Budget Analyst, Office of Management & Budget
Maria Cascone, Office Support Specialist, Office of Management & Budget