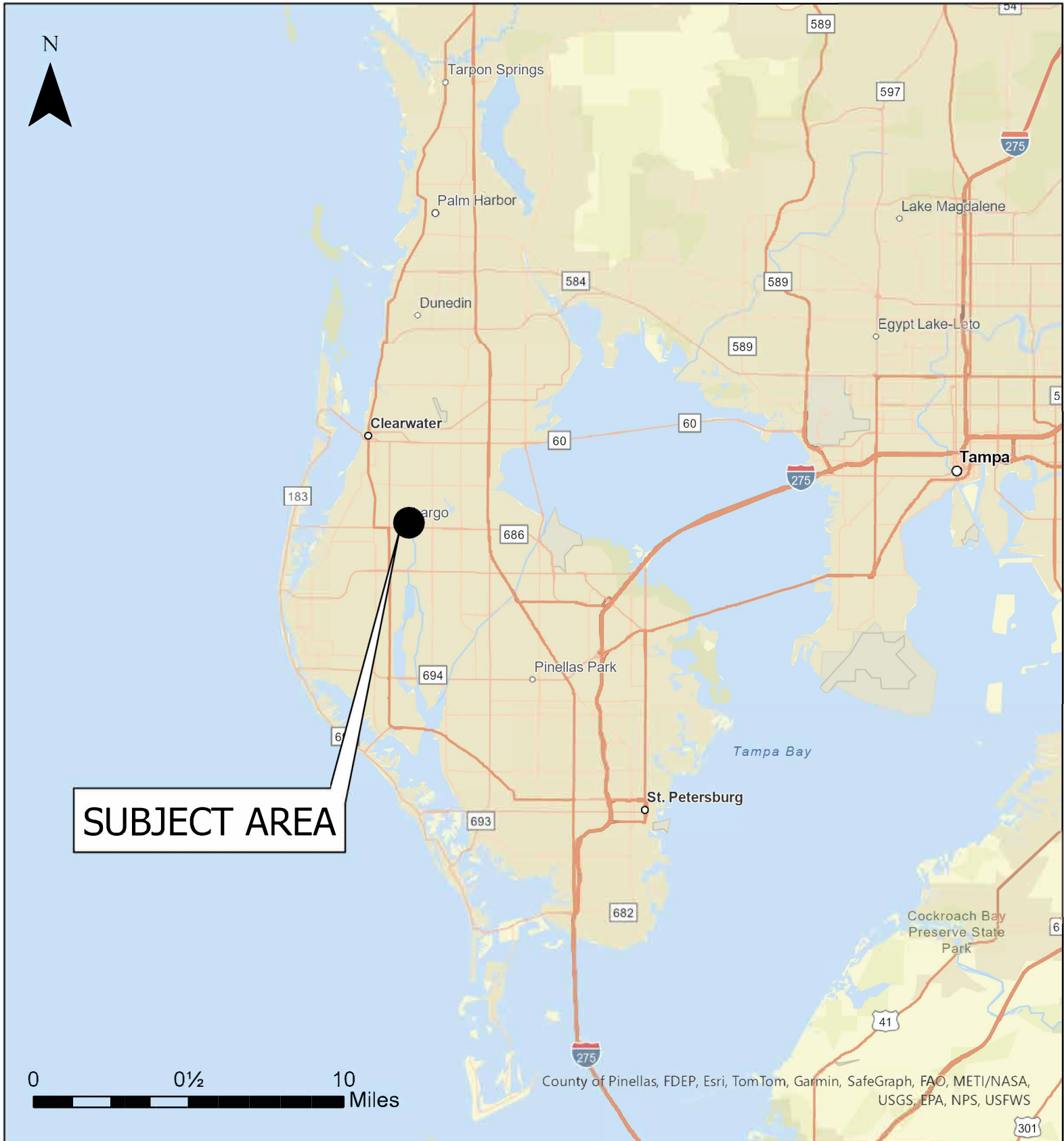


Case CW25-05

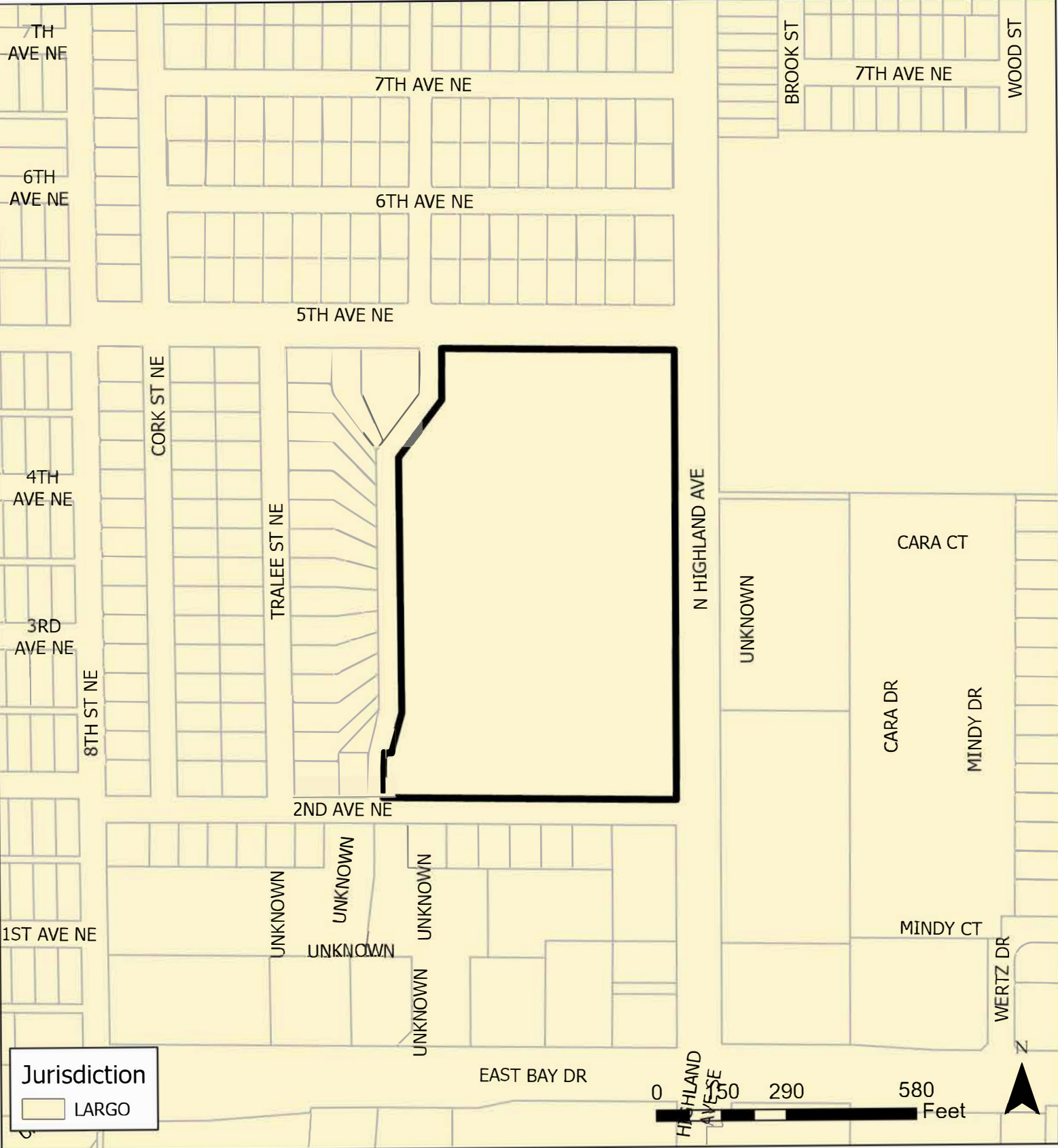
Map 1: Location Map



JURISDICTION: Largo **FROM:** Public/Semi-Public and No Designation
AREA: 13.92 acres m.o.l. **TO:** Retail & Services

Case CW25-05

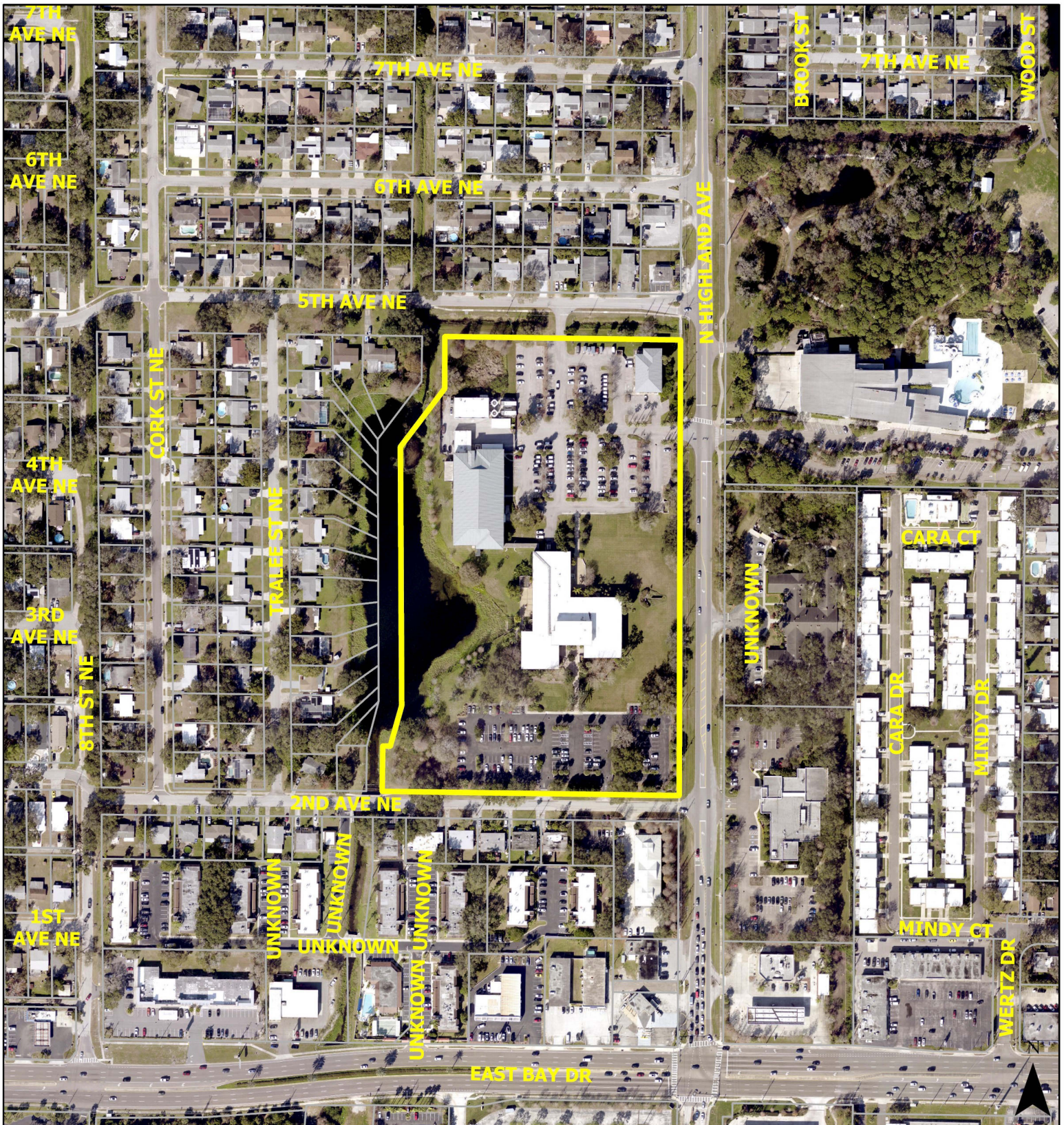
Map 2: Jurisdictional Map



JURISDICTION: Largo	FROM: Public/Semi-Public and No Designation
AREA: 13.92 acres m.o.l.	TO: Retail & Services

Case CW25-05

Map 3: Aerial Map



JURISDICTION: Largo

FROM: Public/Semi-Public and No Designation

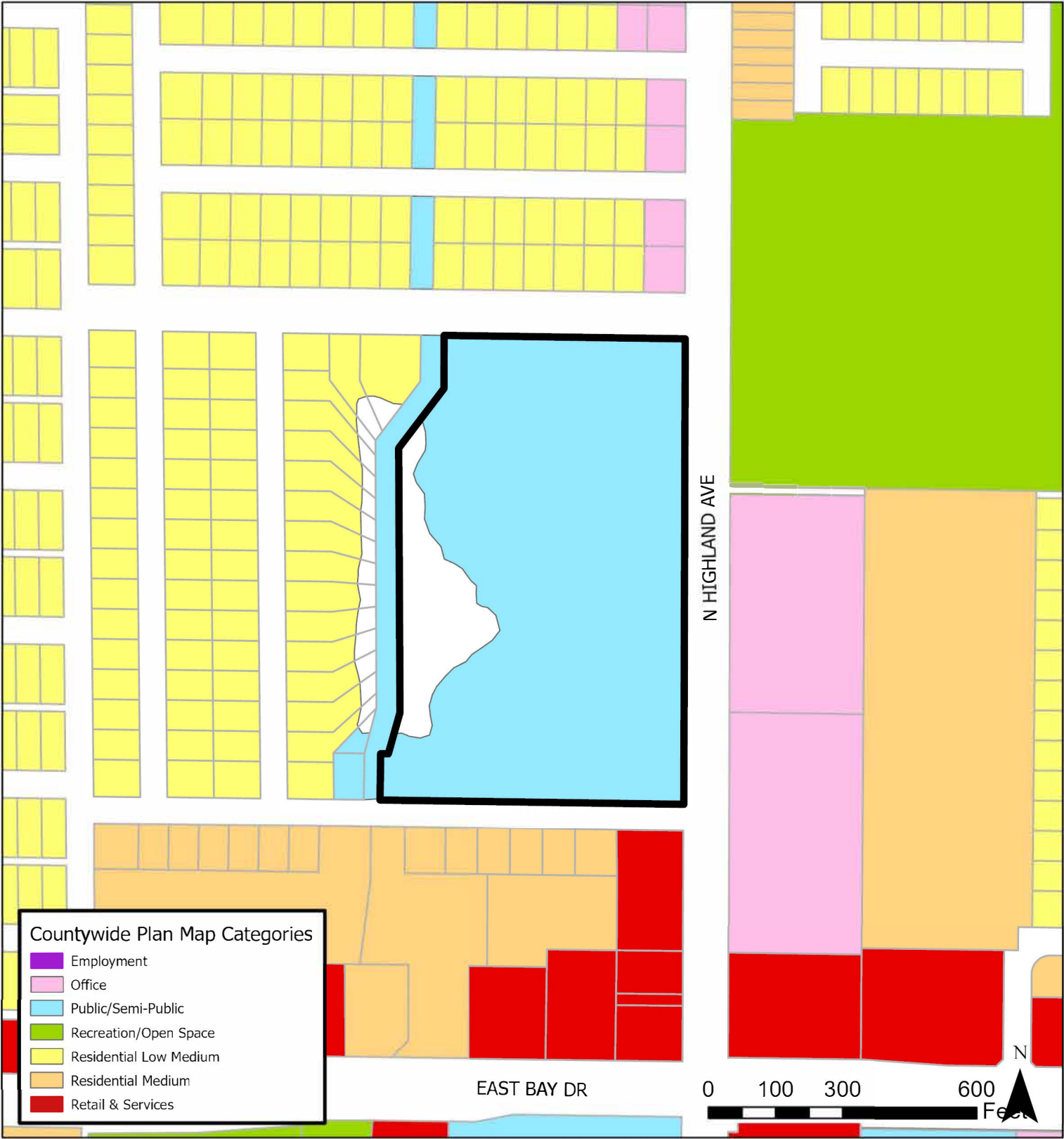
AREA: 13.92 acres m.o.l.

TO: Retail & Services

0 145 290 580
Feet

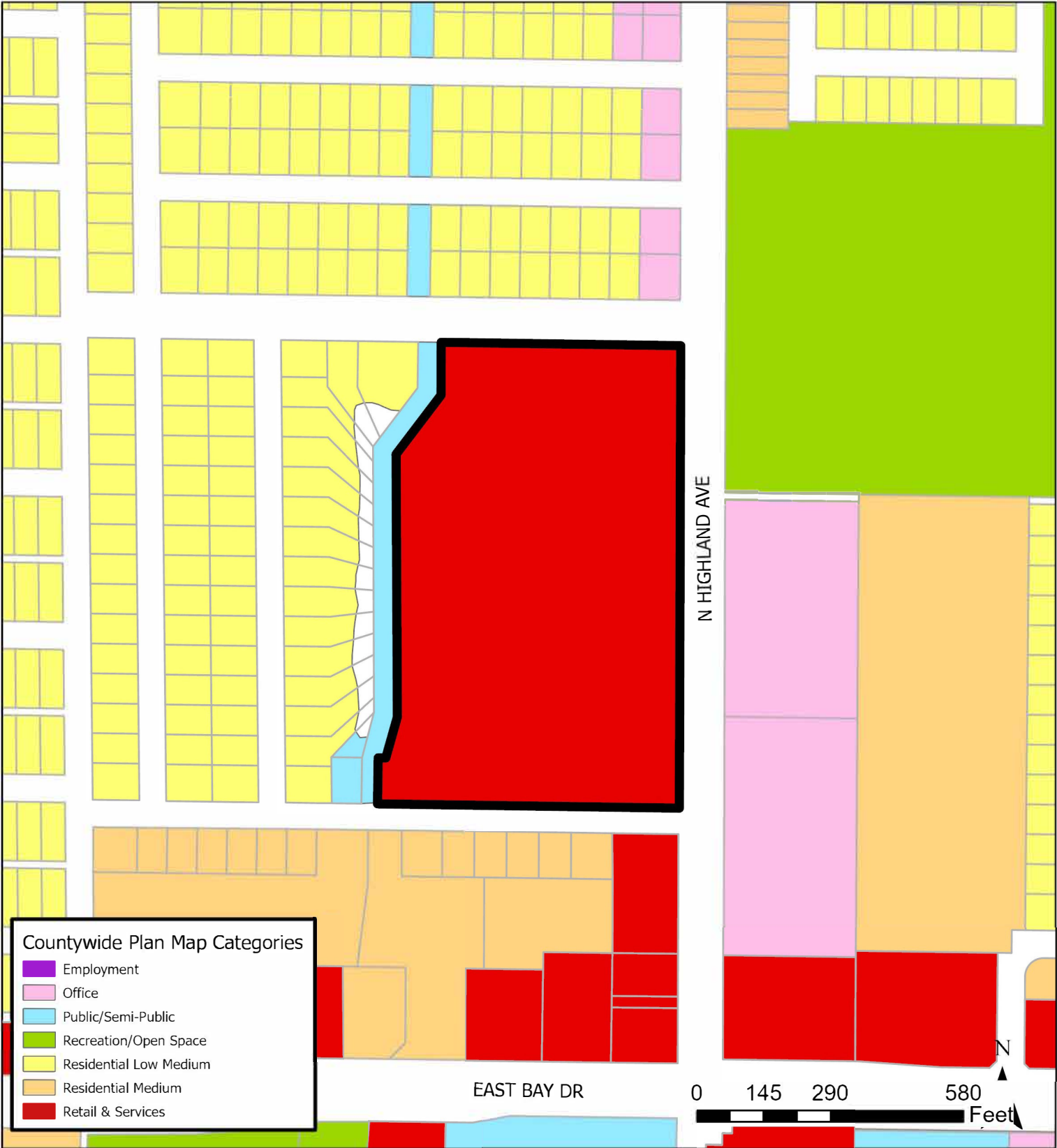
Case CW25-05

Map 4: Current Countywide Plan Map



JURISDICTION: Largo
AREA: 13.92 acres m.o.l

FROM: Public /Semi-Public and No Designation
TO: Retail & Services



JURISDICTION: Largo

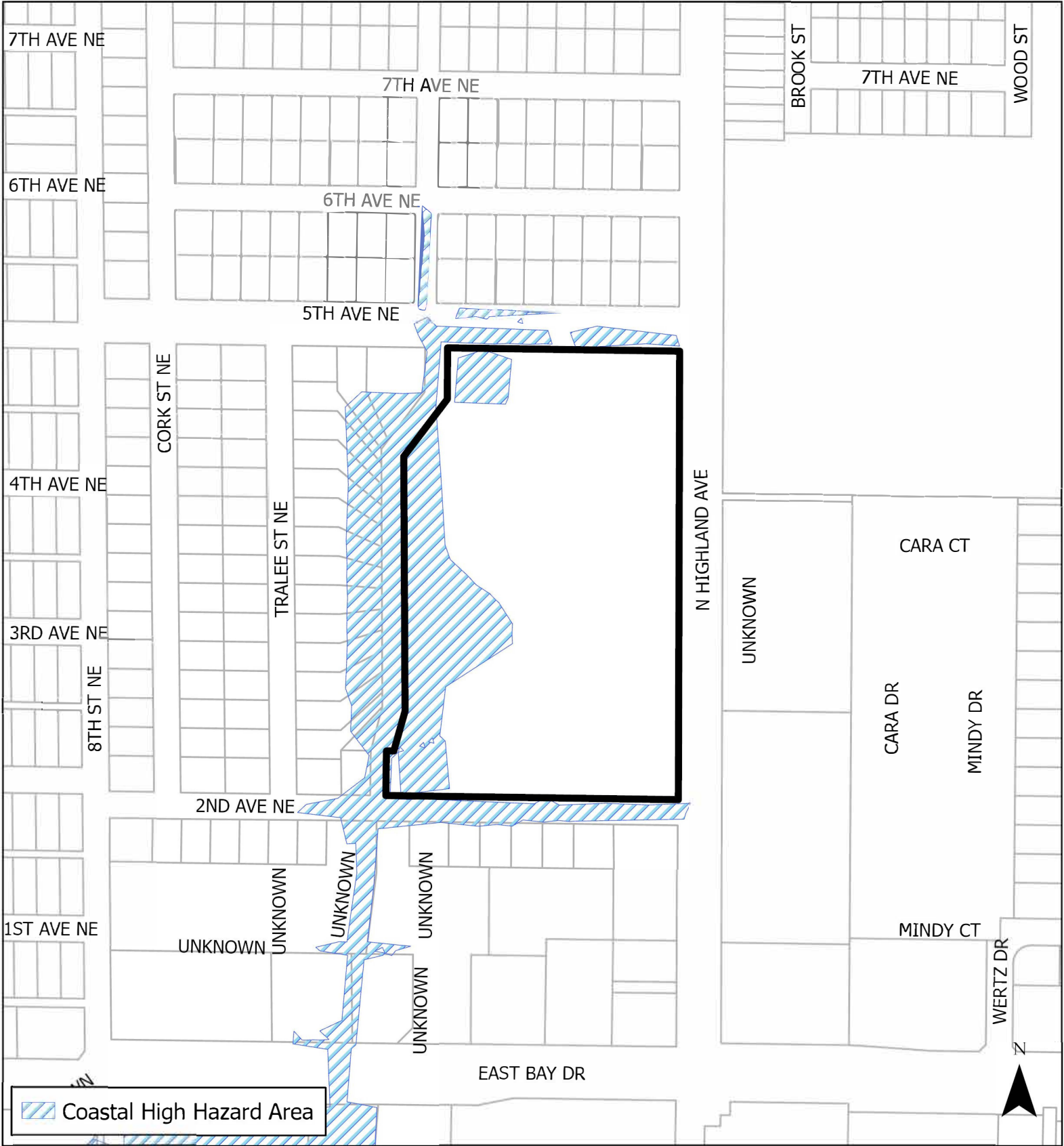
AREA: 13.92 acres m.o.l

FROM: Public /Semi-Public and No Designation

TO: Retail & Services

Case CW25-05

Map 6: Coastal High Hazard Area



JURISDICTION: Largo
AREA: 13.92 acres m.o.l.

FROM: Public/Semi-Public and No Designation
TO: Retail & Services

