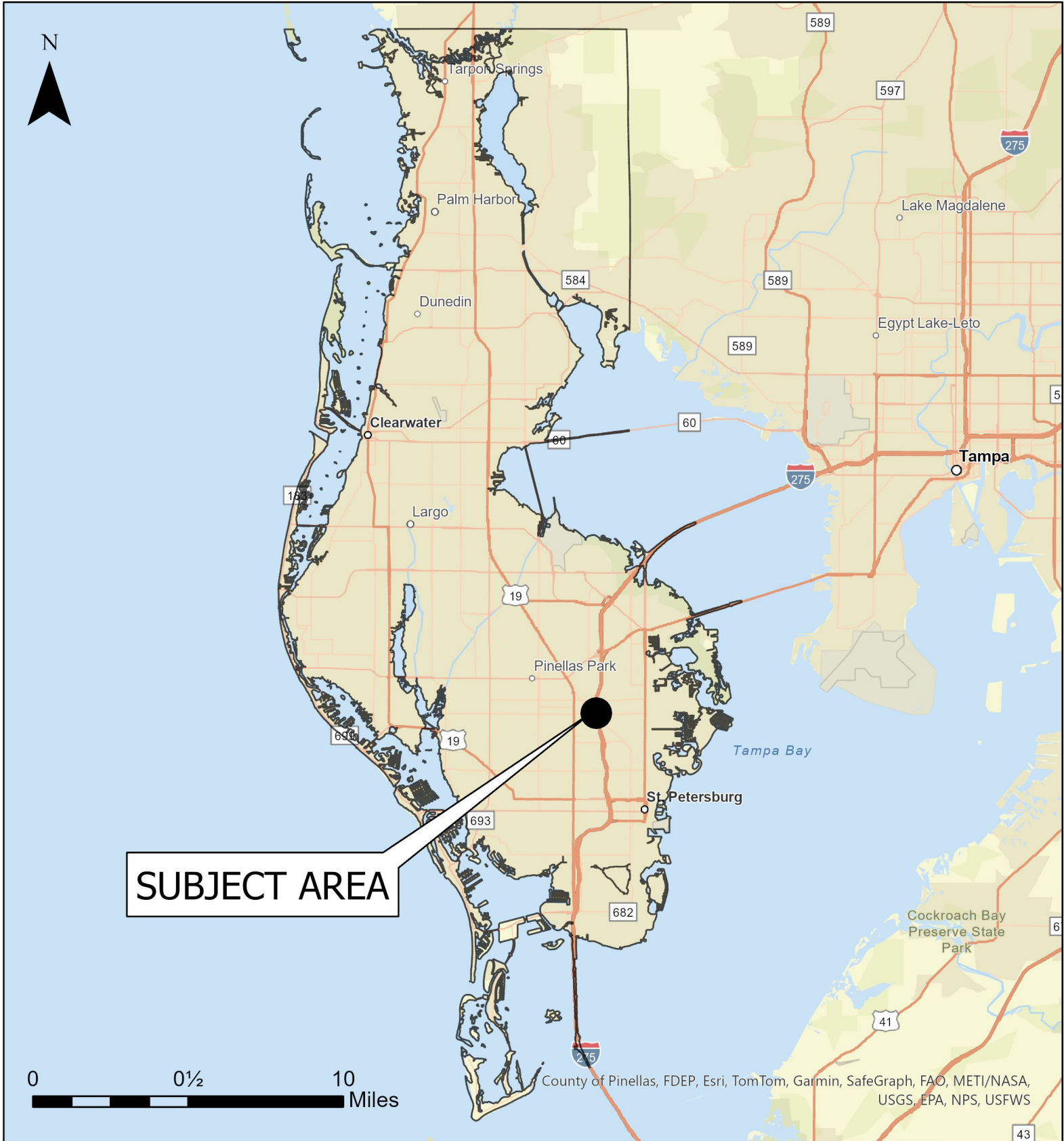


Case CW24-14

Map 1: Location Map



JURISDICTION: Pinellas County

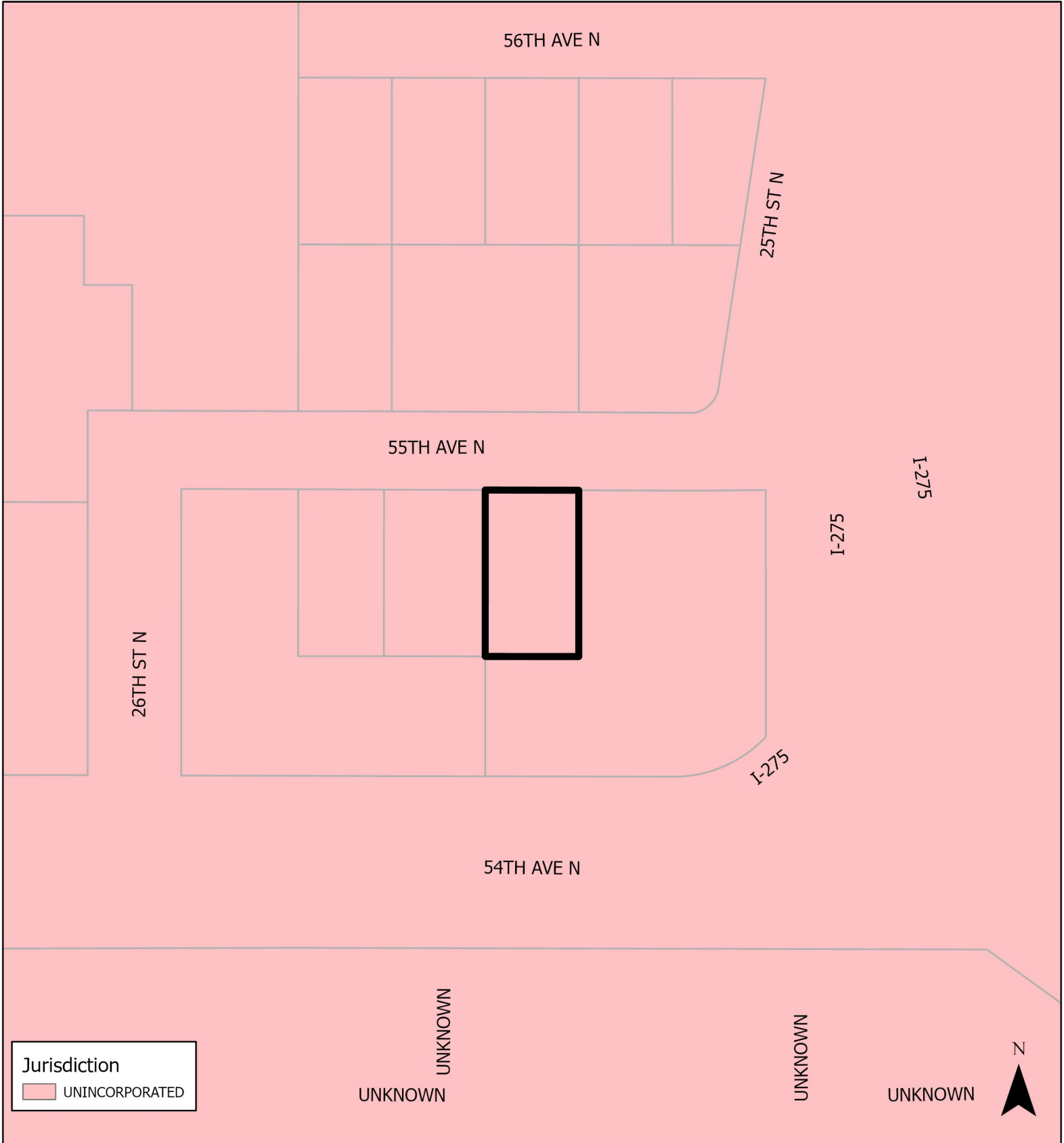
FROM: Residential Low Medium

AREA: 0.15 acres m.o.l.

TO: Retail & Services

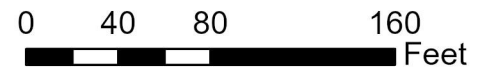
Case CW24-14

Map 2: Jurisdictional Map



JURISDICTION: Pinellas County **FROM:** Residential Low Medium

AREA: 0.15 acres m.o.l. **TO:** Retail & Services



Case CW24-14

Map 3: Aerial Map



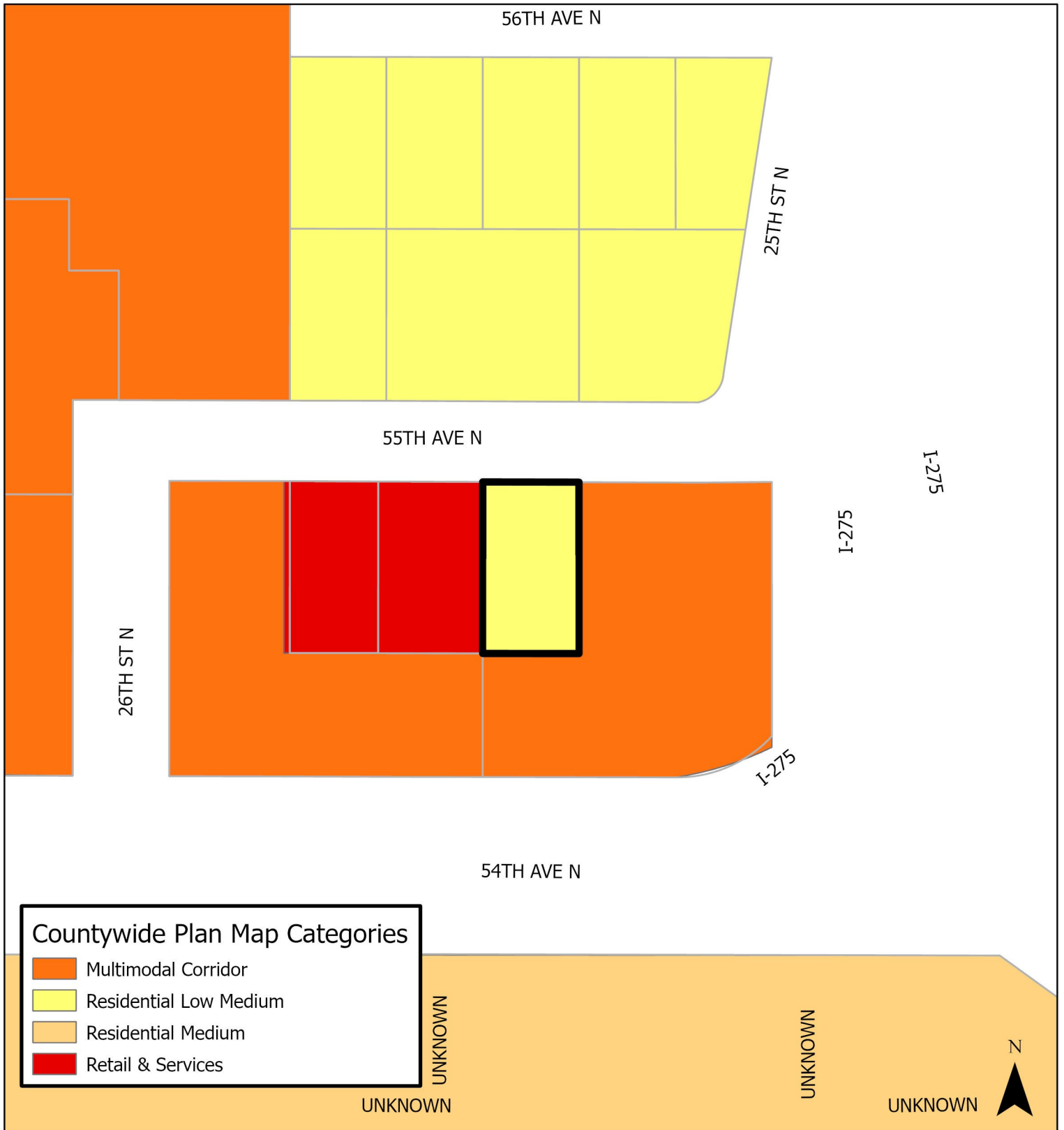
JURISDICTION: Pinellas County **FROM:** Residential Low Medium

AREA: 0.15 acres m.o.l. **TO:** Retail & Services



Case CW24-14

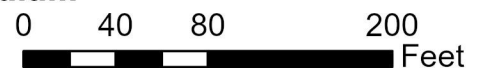
Map 4: Current Countywide Plan Map

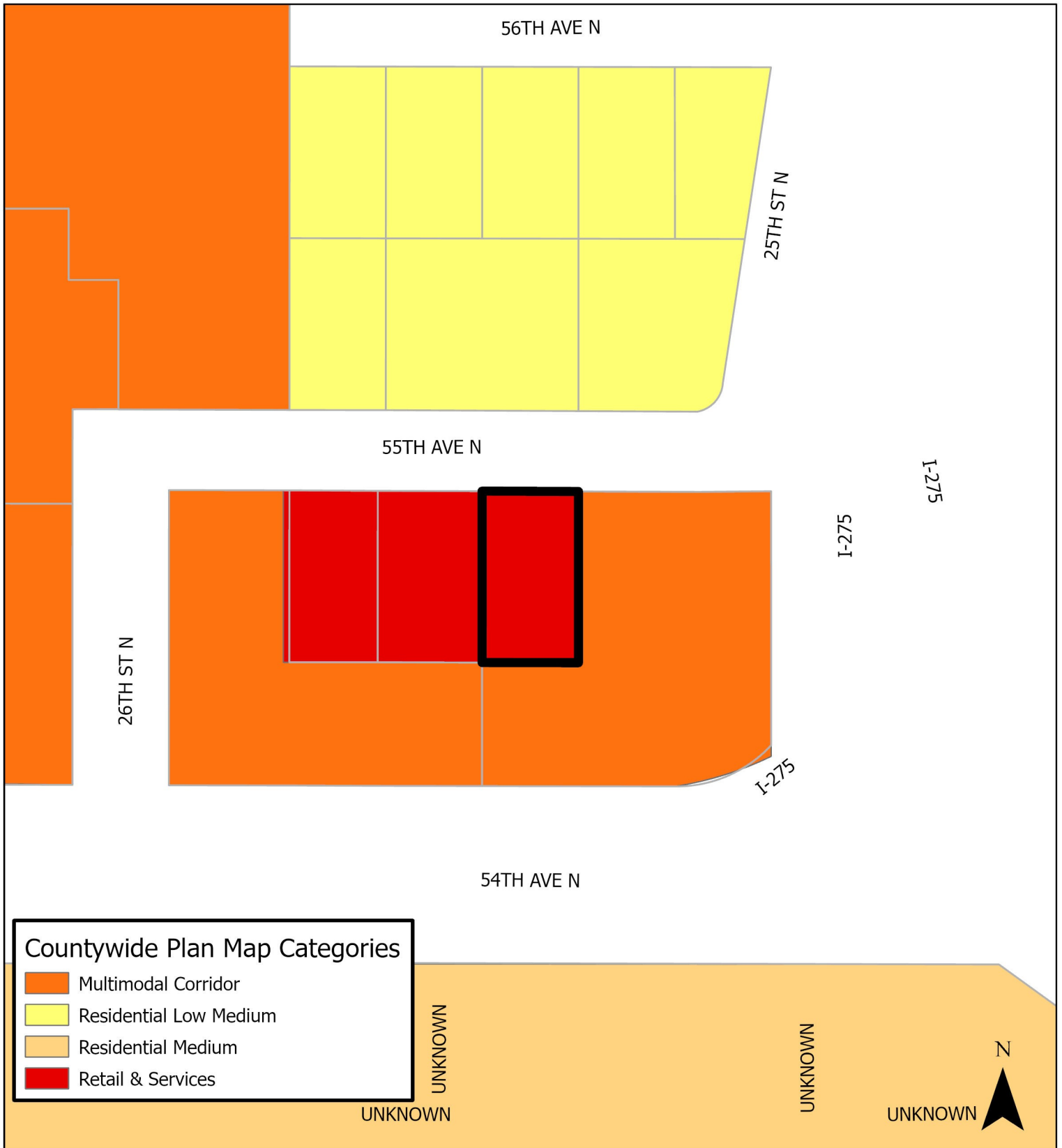


JURISDICTION: Pinellas County FROM: Residential Low Medium

AREA: 0.15 acres m.o.l

TO: Retail & Services





JURISDICTION: Pinellas County

FROM: Residential Low Medium

AREA: 0.15 acres m.o.l.

TO: Retail & Services

