

Map 1 - Location

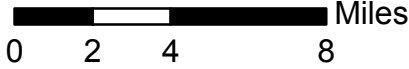
CASE #: CW16-16

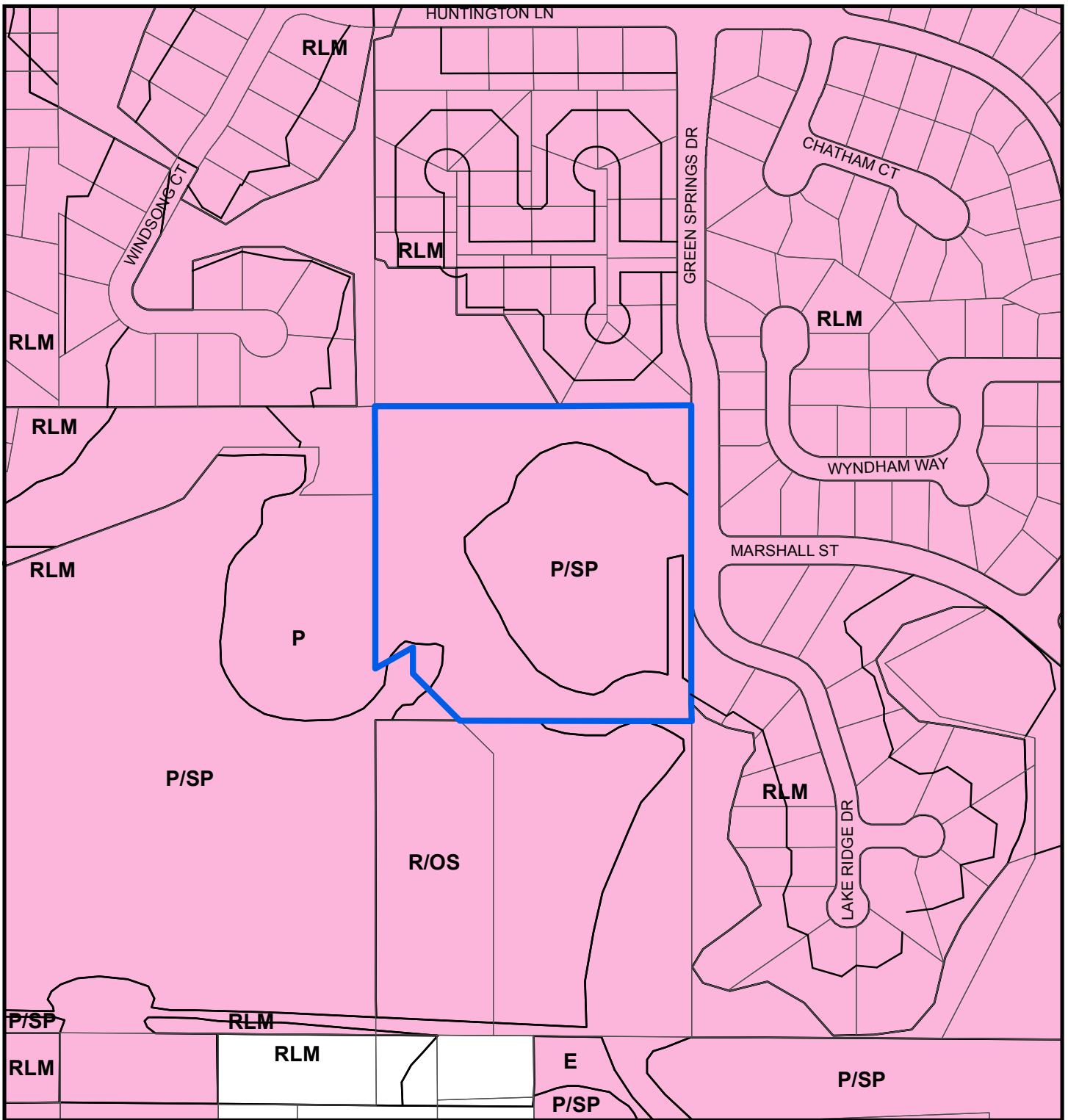
FROM: Public/Semi-Public and Preservation

AREA: 10 Acres

JURISDICTION: Safety Harbor

TO: Recreation/Open Space, Public/Semi-Public and Preservation





Map 2 - Current Countywide Plan Map & Jurisdictional Map

CASE #: CW16-16

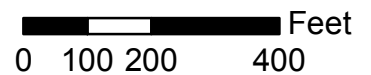
FROM: Public/Semi-Public and Preservation

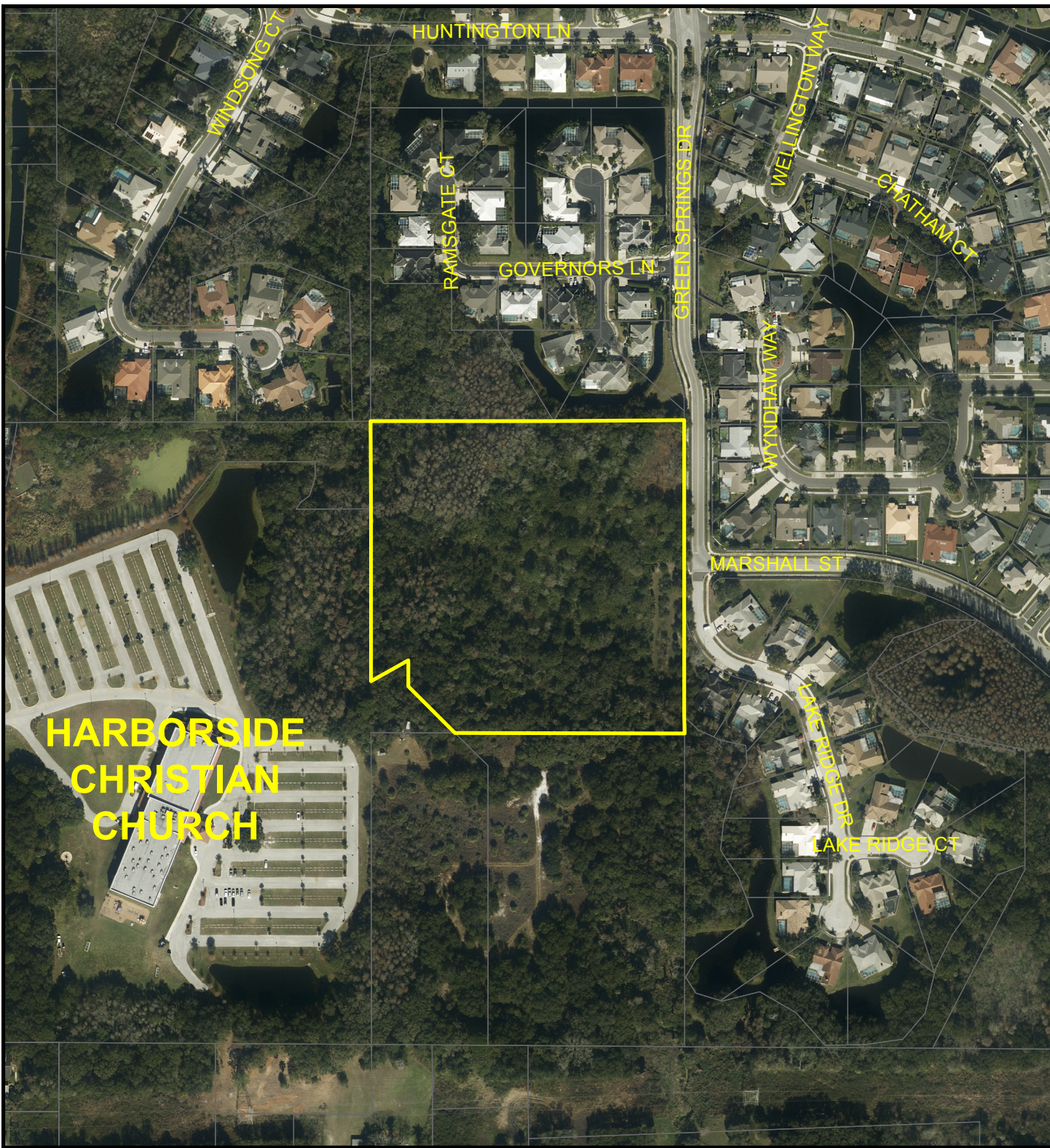
AREA: 10 Acres

JURISDICTION: Safety Harbor

TO: Recreation/Open Space, Public/Semi-Public and Preservation

LEGEND: Safety Harbor Unincorporated





Map 3 - Aerial

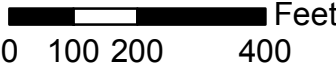
CASE #: CW16-16

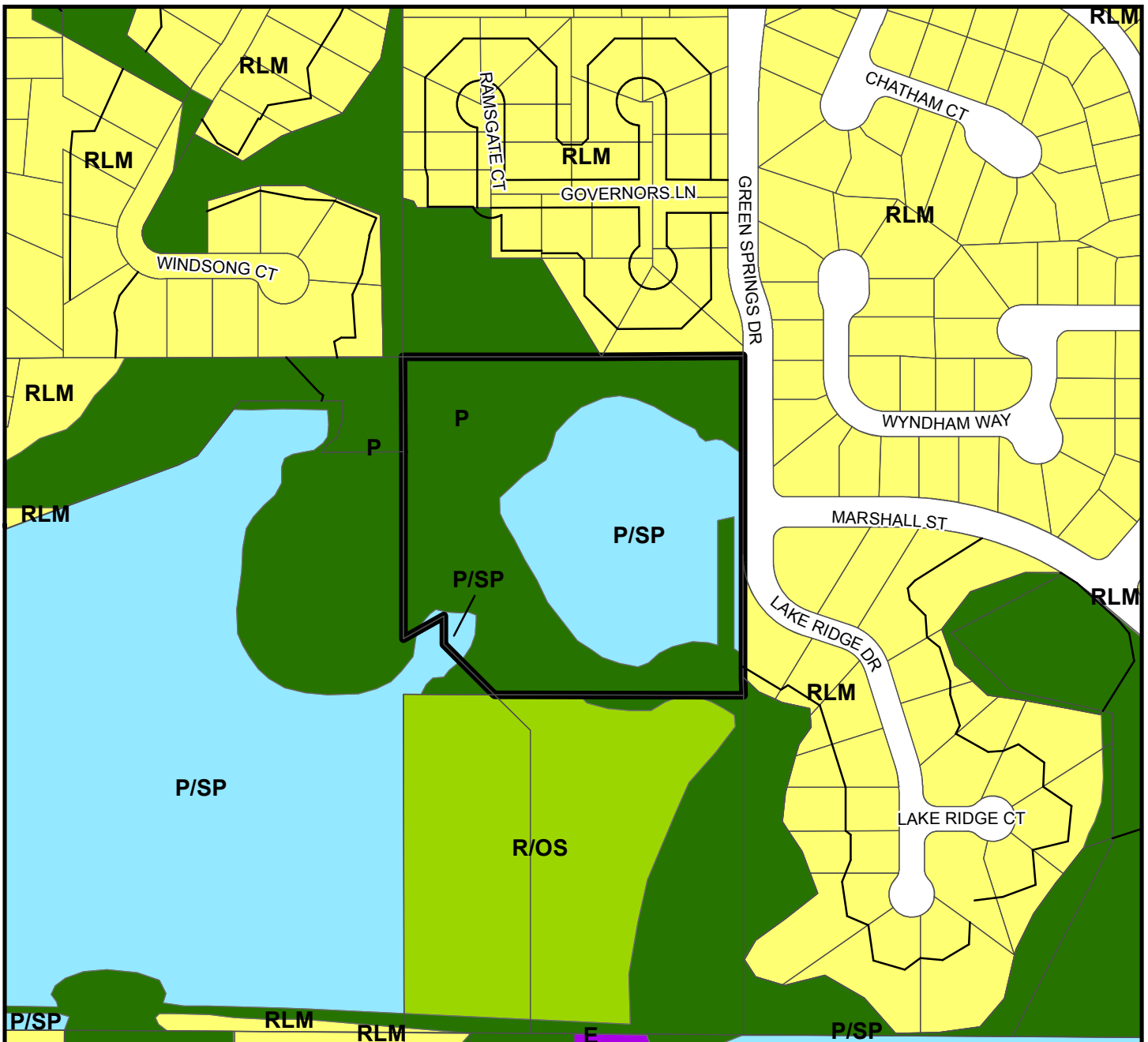
FROM: Public/Semi-Public and Preservation

AREA: 10 Acres

JURISDICTION: Safety Harbor

TO: Recreation/Open Space, Public/Semi-Public and Preservation





Plan Map Categories

- Residential Low Medium
- Recreation/Open Space
- Employment
- Preservation
- Public/Semi-Public

Map 4 - Current Countywide Plan Map

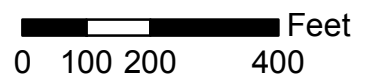
CASE #: CW16-16

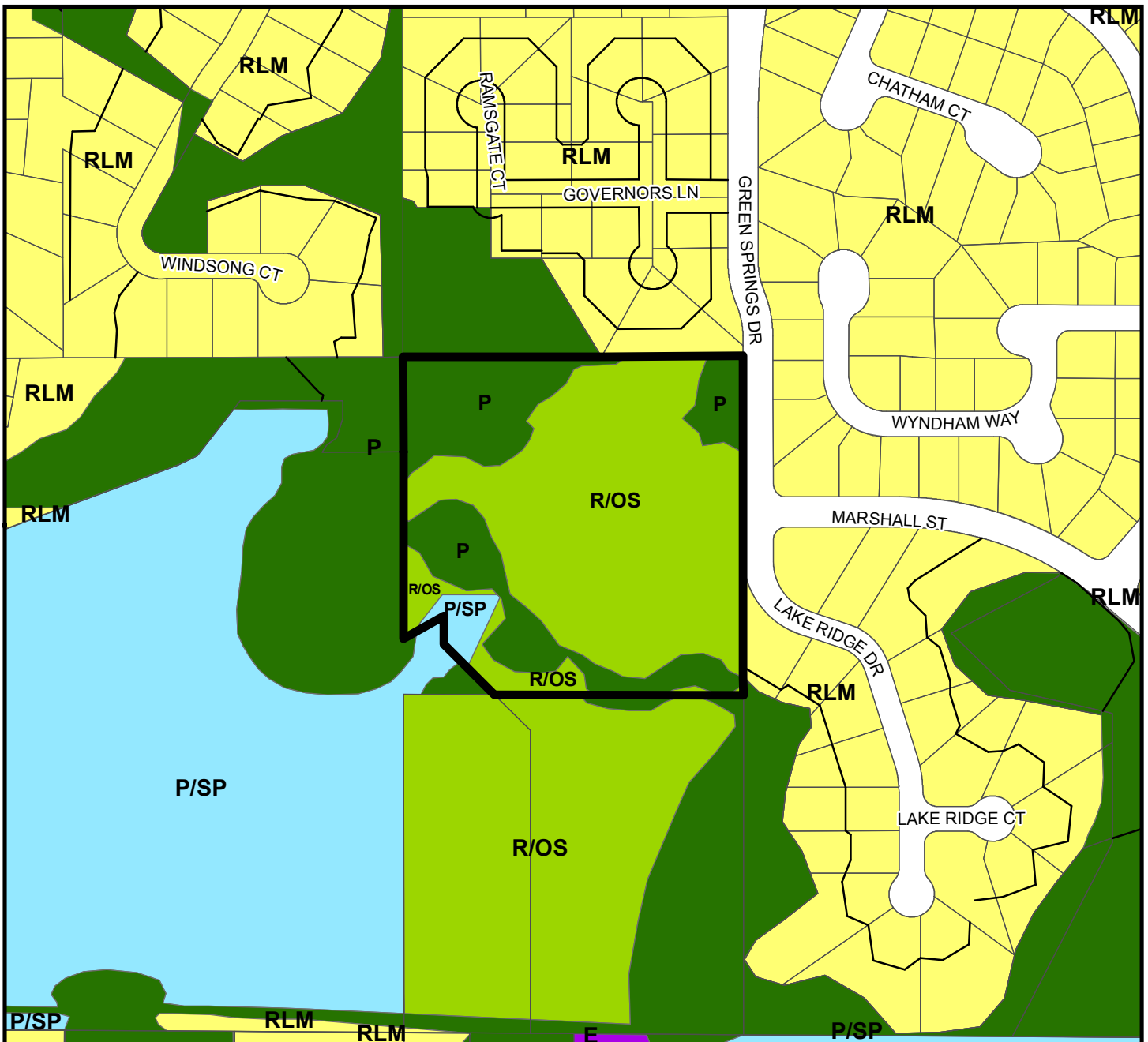
FROM: Public/Semi-Public and Preservation

AREA: 10 Acres

JURISDICTION: Safety Harbor

TO: Recreation/Open Space, Public/Semi-Public and Preservation





Plan Map Categories

- Residential Low Medium
- Recreation/Open Space
- Employment
- Preservation
- Public/Semi-Public

Map 5 - Proposed Countywide Plan Map

CASE #: CW16-16 **FROM:** Public/Semi-Public and Preservation **AREA:** 10 Acres

JURISDICTION: Safety Harbor **TO:** Recreation/Open Space, Public/Semi-Public and Preservation

