

ZON-21-02

Location Map

Zoning

From: RMH, Residential Mobile/Manufactured Home

To: R-4, One, Two & Three Family Residential



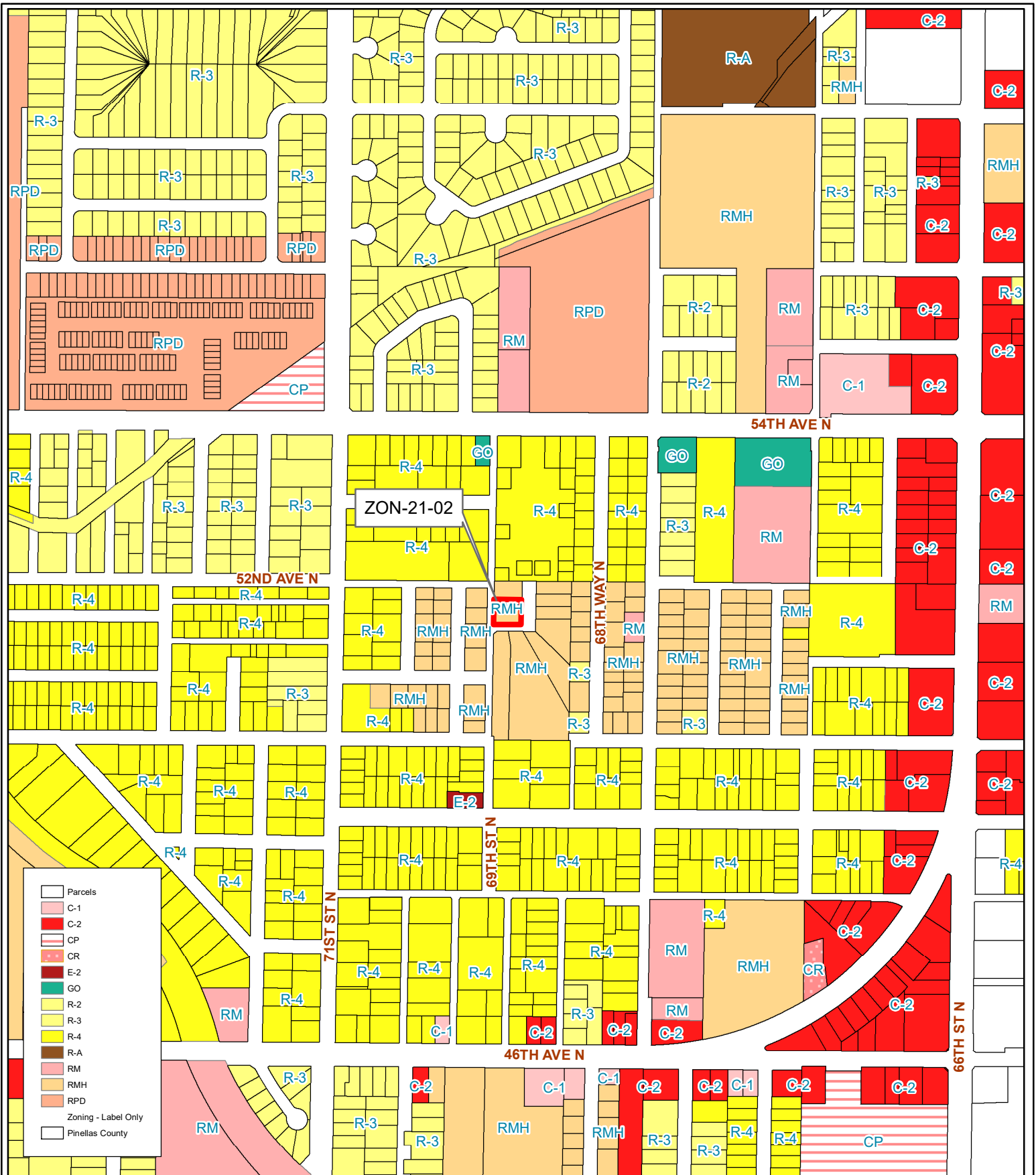
06/31/16/70020/100/1408

Prepared by: Pinellas County Planning Department



Date: 1/8/2021

1 inch = 4.5 miles



Parcels

- Parcels
- C-1
- CP
- CR
- E-2
- GO
- R-2
- R-3
- R-4
- R-A
- RM
- RMH
- RPD
- Zoning - Label Only
- Pinellas County

ZON-21-02
Current Zoning

Zoning

From: RMH, Residential Mobile/Manufactured Home
To: R-4, One, Two & Three Family Residential



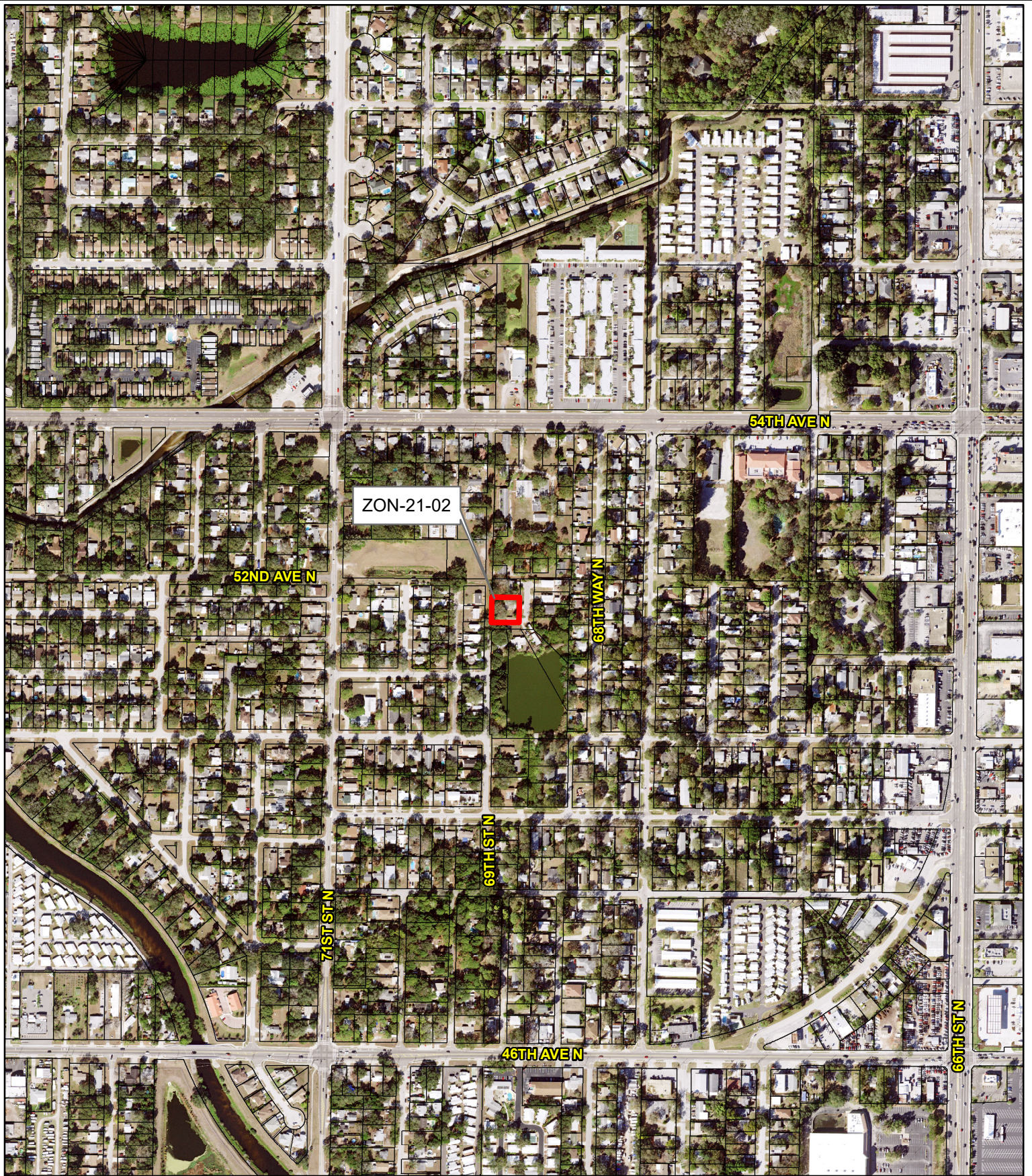
06/31/16/70020/100/1408

Prepared by: Pinellas County Planning Department



Date: 1/8/2021

1 inch = 0.1 miles



ZON-21-02

Aerial Map

Zoning

From: RMH, Residential Mobile/Manufactured Home

To: R-4, One, Two & Three Family Residential



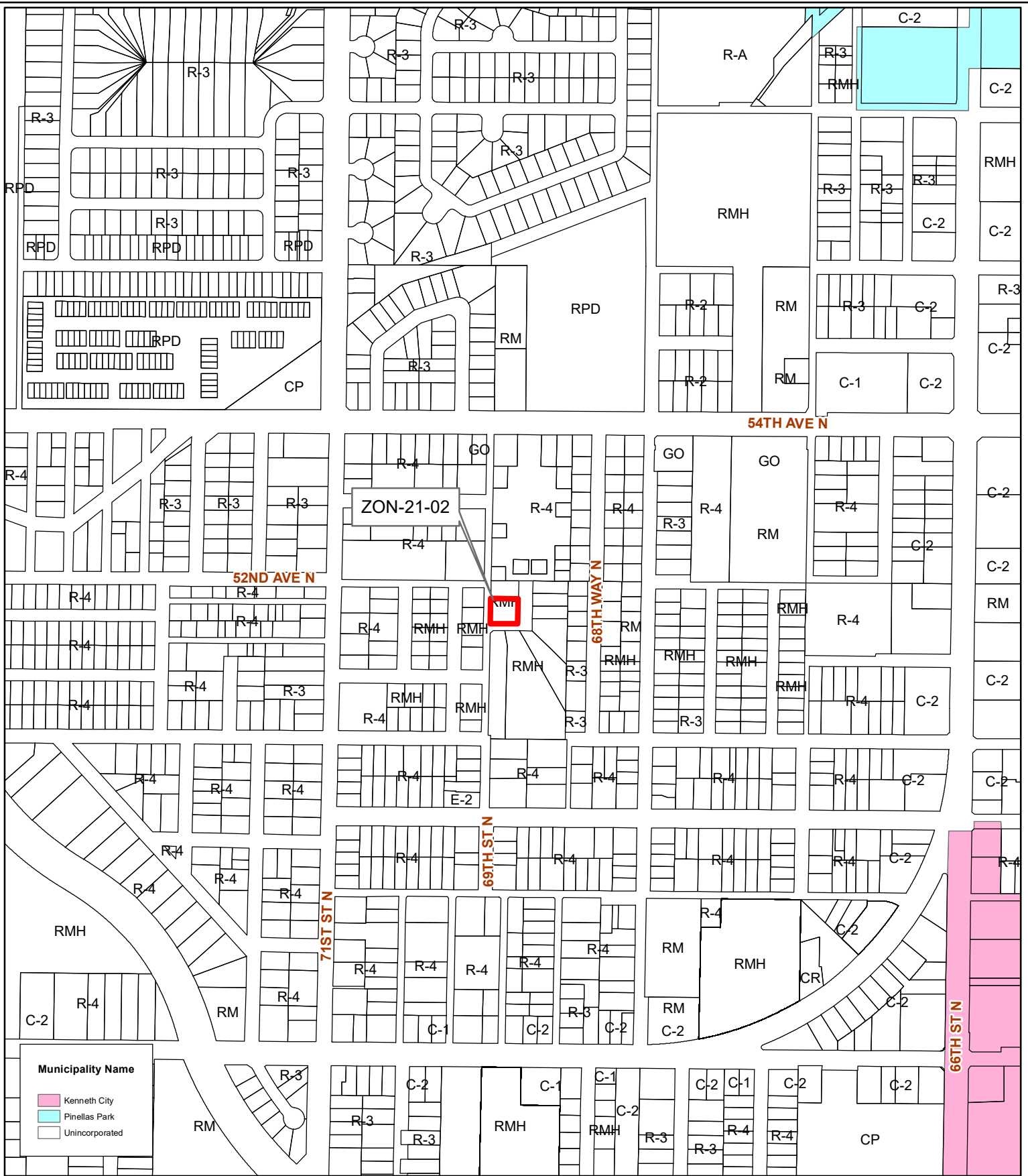
06/31/16/70020/100/1408

Prepared by: Pinellas County Planning Department



Date: 1/8/2021

1 inch = 0.1 miles



Municipality Name

- Kenneth City
- Pinellas Park
- Unincorporated

ZON-21-02
Municipal Map

Zoning
From: RMH, Residential Mobile/Manufactured Home
To: R-4, One, Two & Three Family Residential



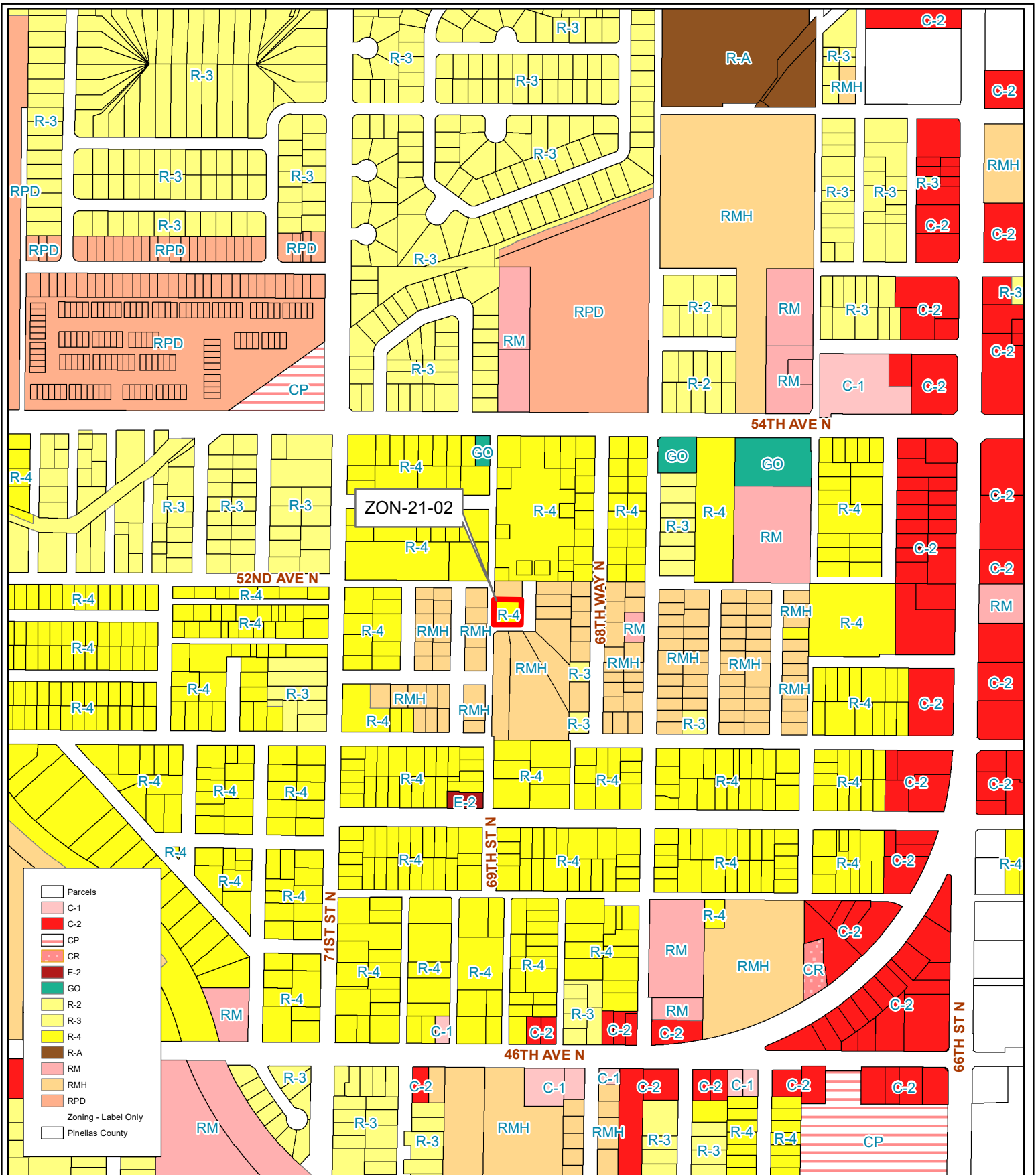
06/31/16/70020/100/1408

Prepared by: Pinellas County Planning Department



Date: 1/8/2021

1 inch = 0.1 miles



ZON-21-02

Proposed Zoning

Zoning

From: RMH, Residential Mobile/Manufactured Home

To: R-4, One, Two & Three Family Residential

06/31/16/70020/100/1408

Prepared by: Pinellas County Planning Department



Date: 1/8/2021



1 inch = 0.1 miles