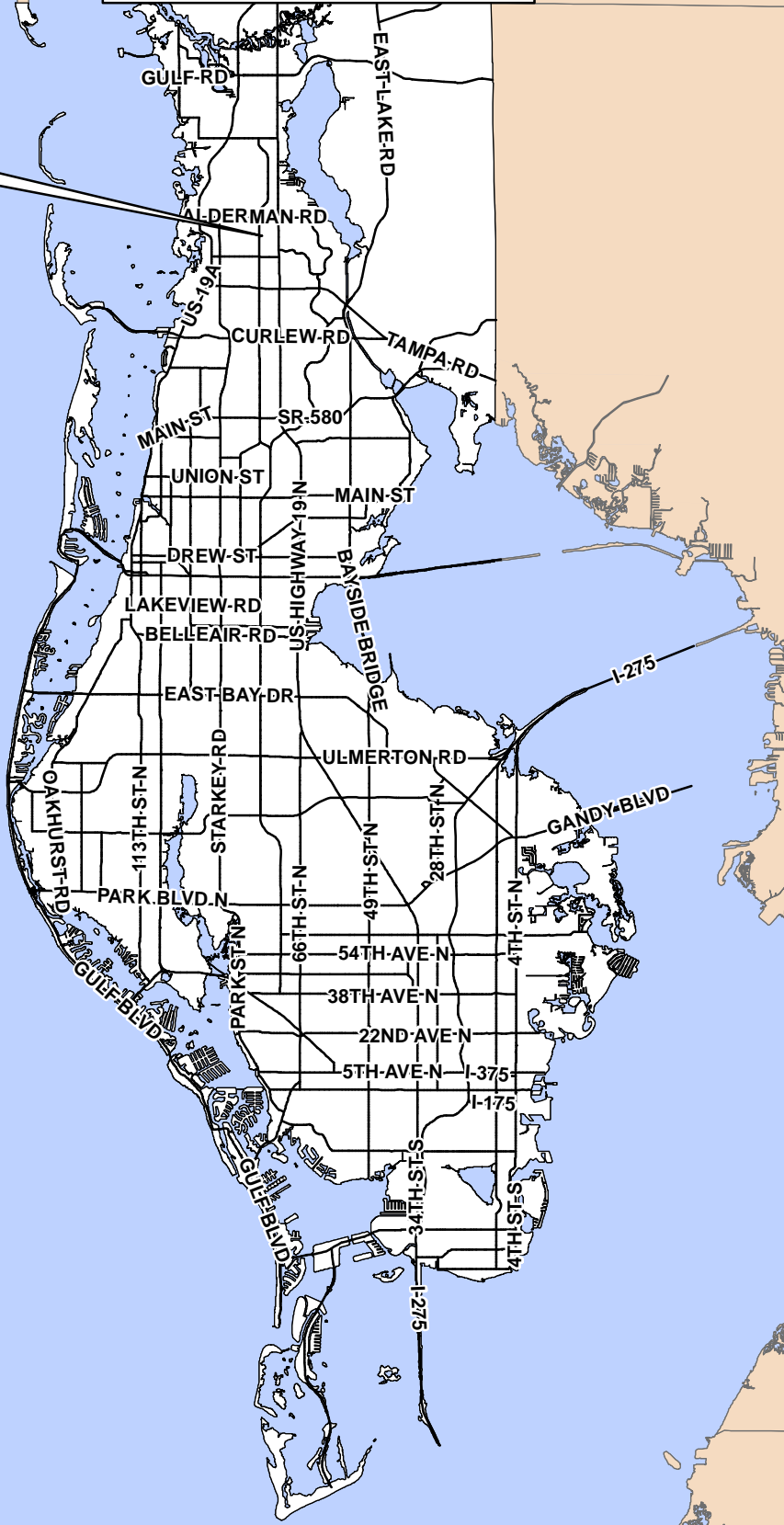


SUBJECT MARKER MAP

Z-14-6-16



- Planning Roads
- Surrounding Counties
- Pinellas County

MAP 1

Z-14-6-16

Zoning

From: A-E, Agricultural Estate Residential, R-R, Rural Residential & R-3, Single Family Residential
To: IL, Institutional Limited



01/28/15/88560/031/0001

Prepared by: Pinellas County Planning Department



Date of Map: 4/21/2016

1 inch = 4.5 miles

LAND USE & ZONING MAP



Z-14-6-16

BELCHER RD

NEBRASKA AVE

MAP 2

- Zoning - Label Only
- Future Land Use Unincorporated Land Use Code**
- Residential Suburban
 - Residential Low
 - Residential Urban
 - Residential/Office/Limited
 - Residential/Office/General
 - Preservation
 - Recreation/Open Space
 - Institutional
 - Transportation/Utilities
 - WATER

Z-14-6-16

Zoning **From:** A-E, Agricultural Estate Residential, R-R, Rural Residential & R-3, Single Family Residential
To: IL, Institutional Limited

01/28/15/88560/031/0001

Prepared by: Pinellas County Planning Department

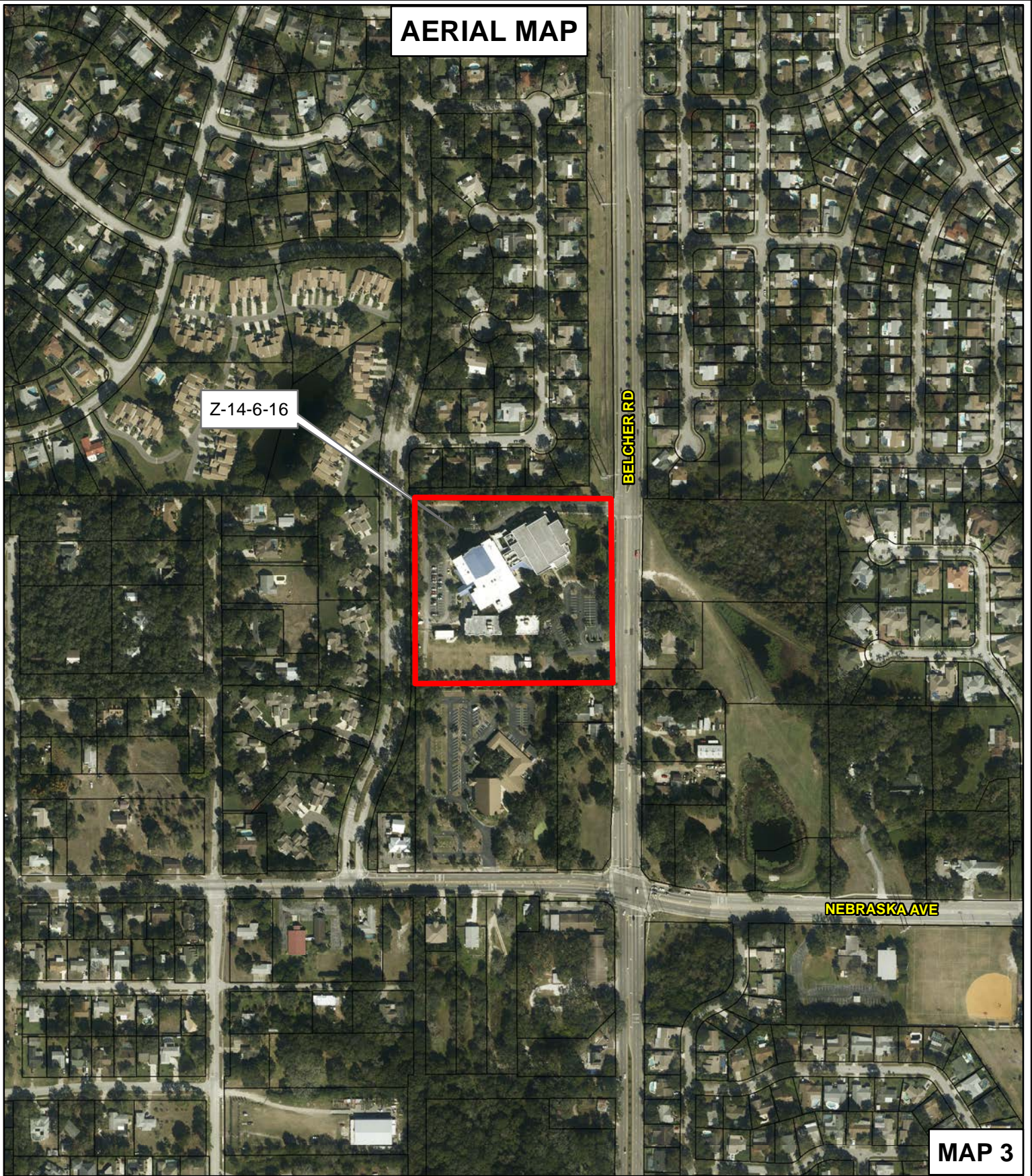


Date: 4/22/2016



1 inch = 0.08 miles

AERIAL MAP



MAP 3

Z-14-6-16

Zoning

From: A-E, Agricultural Estate Residential, R-R, Rural Residential & R-3, Single Family Residential
To: IL, Institutional Limited

01/28/15/88560/031/0001

Prepared by: Pinellas County Planning Department

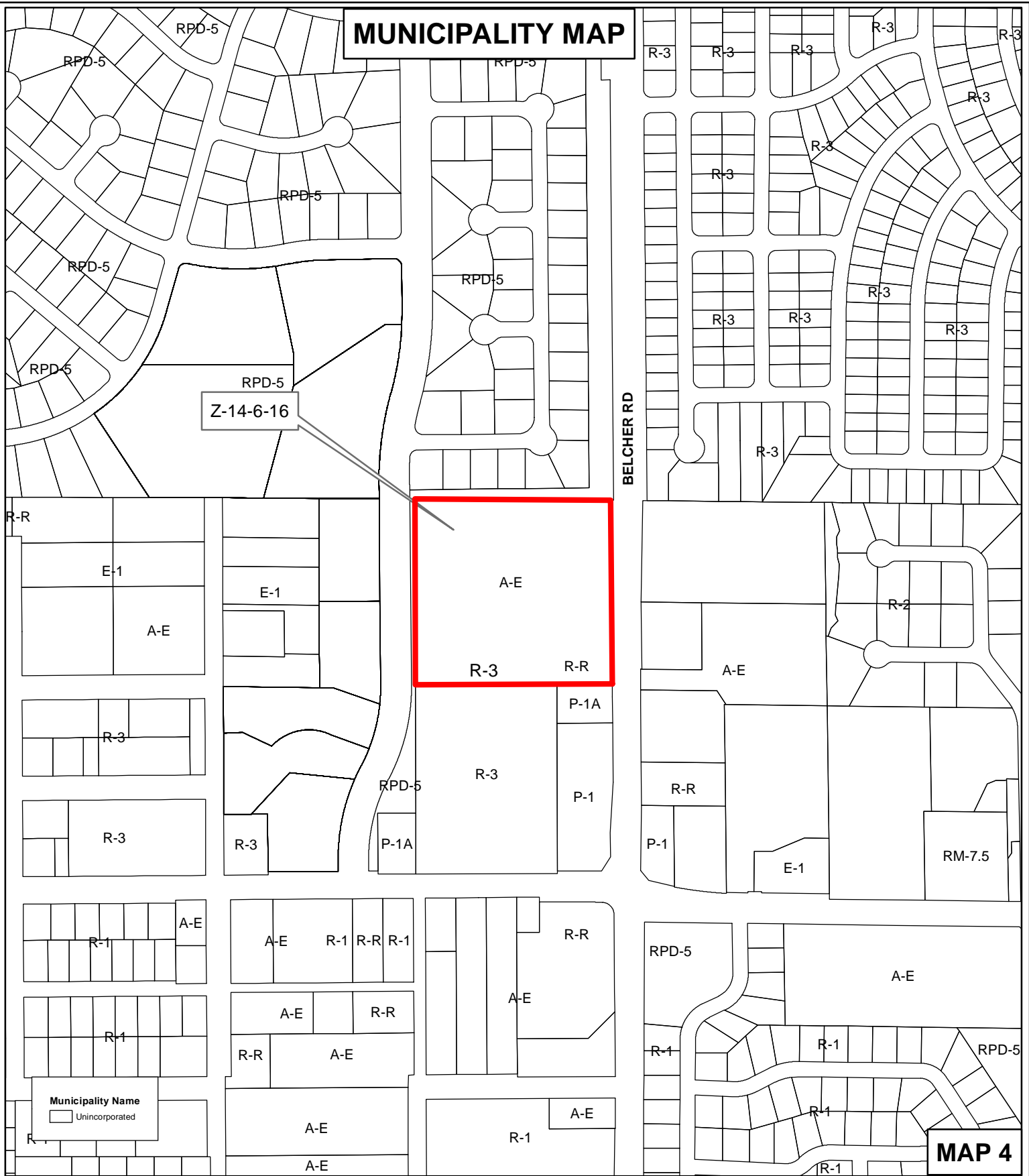


Date: 4/22/2016



1 inch = 0.08 miles

MUNICIPALITY MAP



BELCHER RD

MAP 4

Z-14-6-16

Zoning From: A-E, Agricultural Estate Residential, R-R, Rural Residential & R-3, Single Family Residential
To: IL, Institutional Limited



01/28/15/88560/031/0001

Prepared by: Pinellas County Planning Department



Date: 4/22/2016

1 inch = 0.08 miles