

Case CW20-16

Map 1: Location Map

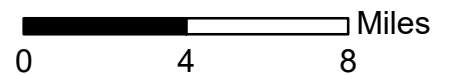


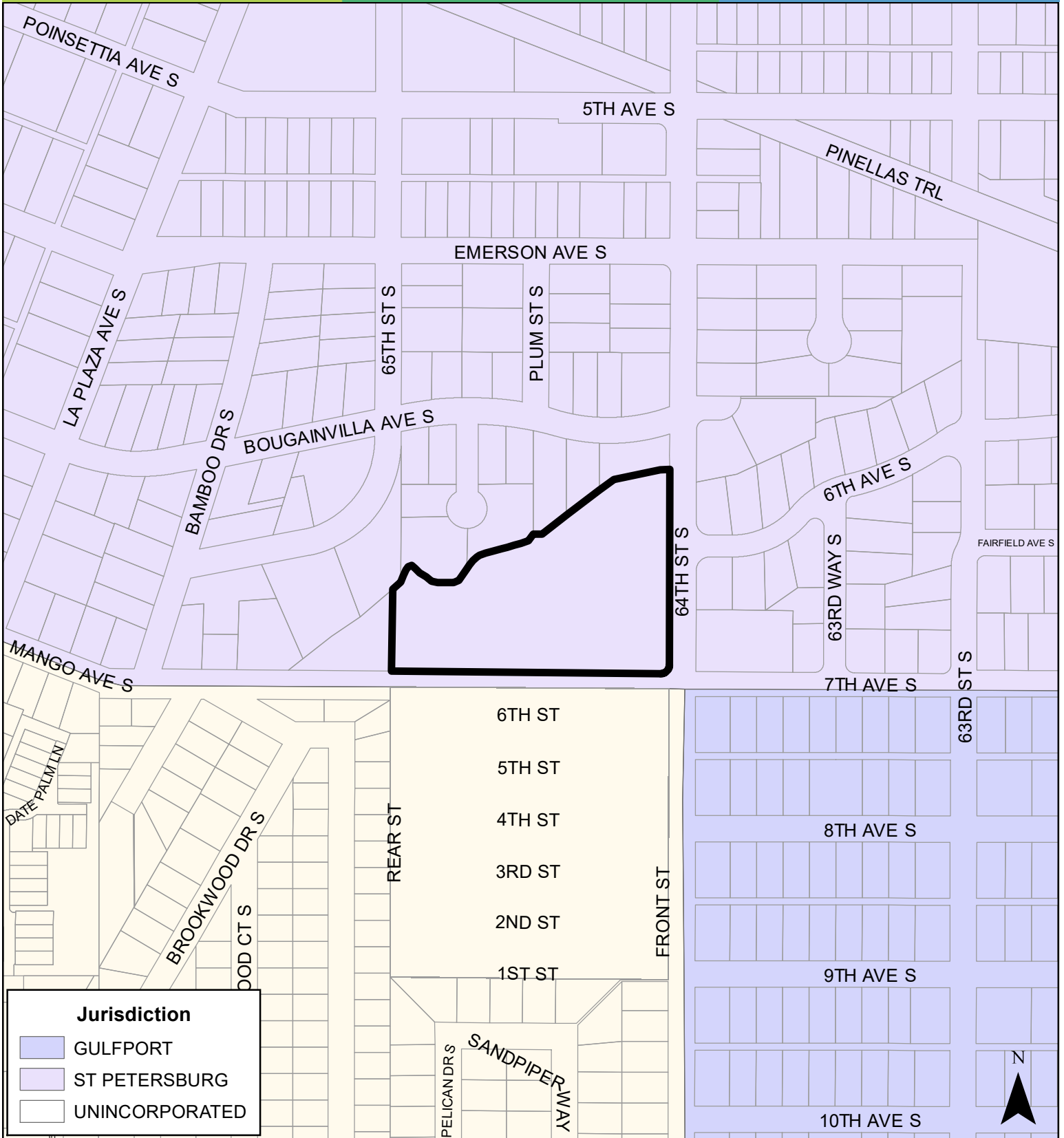
JURISDICTION: St. Petersburg

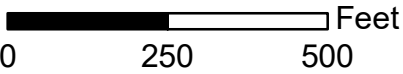
AREA: 4.37 Acres

FROM: Public/Semi-Public and Residential Low Medium

TO: Residential Medium and Residential Low Medium





JURISDICTION: St. Petersburg	FROM: Public/Semi-Public and Residential Low Medium	
AREA: 4.37 Acres	TO: Residential Medium and Residential Low Medium	

Case CW20-16

Map 3: Aerial Map



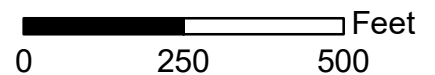
JURISDICTION: St. Petersburg

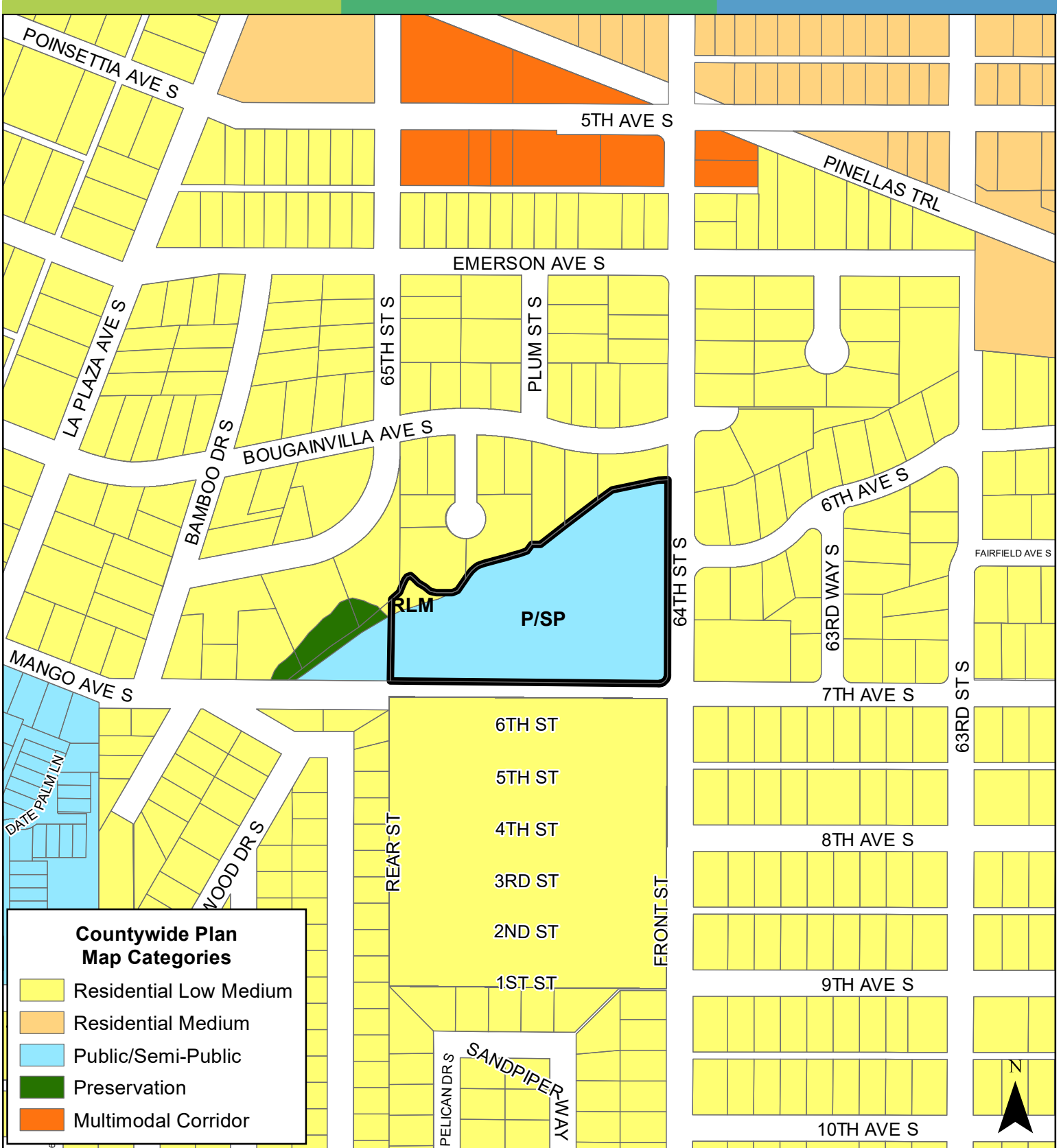
AREA: 4.37 Acres

FROM:

TO:

Public/Semi Public and
Residential Low Medium
Residential Medium and
Residential Low Medium

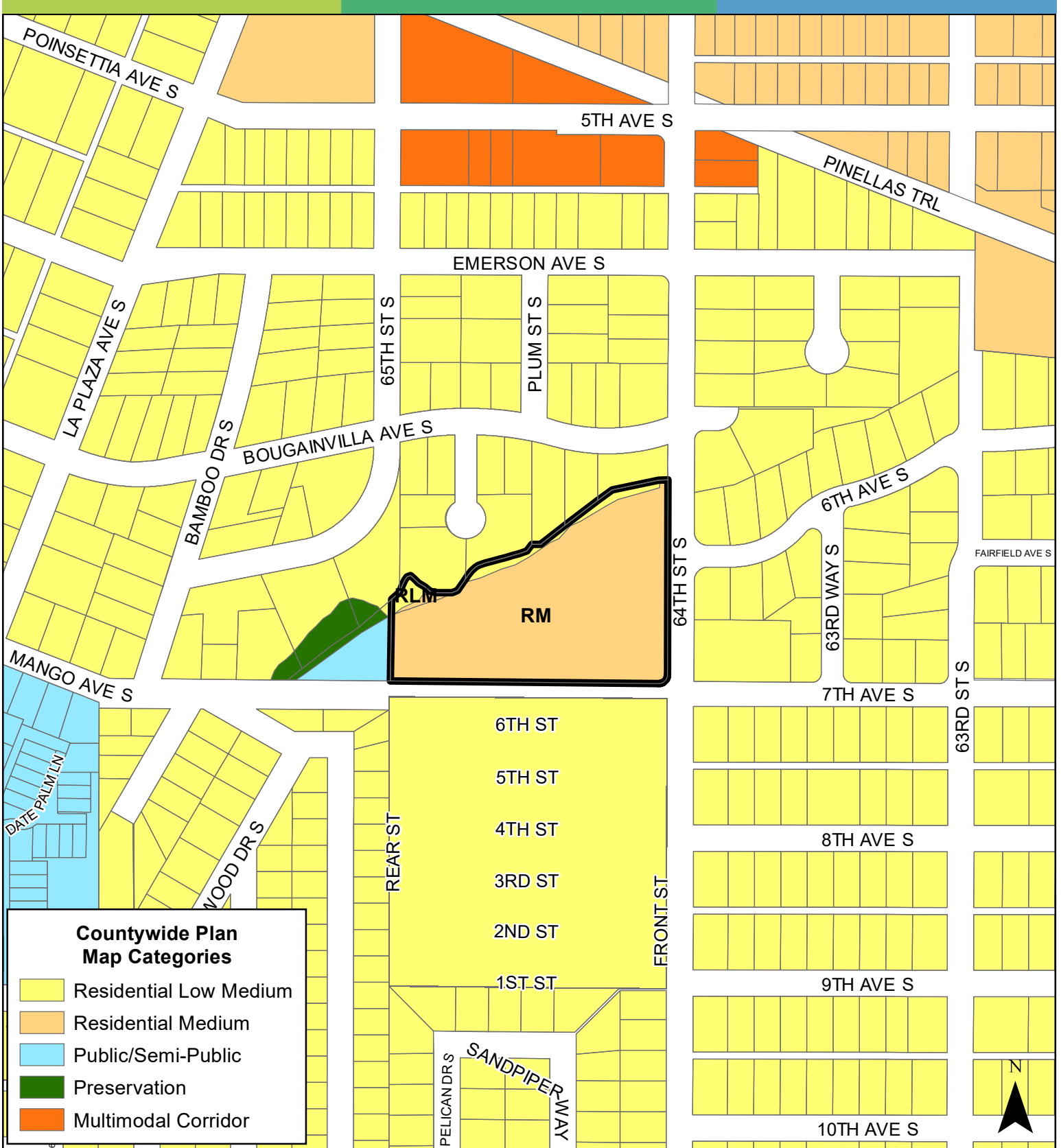




Countywide Plan Map Categories

- Residential Low Medium
- Residential Medium
- Public/Semi-Public
- Preservation
- Multimodal Corridor

JURISDICTION: St. Petersburg	FROM: Public/Semi-Public and Residential Low Medium	Feet
AREA: 4.37 Acres	TO: Residential Medium and Residential Low Medium	0 250 500



Countywide Plan Map Categories


- Residential Low Medium
- Residential Medium
- Public/Semi-Public
- Preservation
- Multimodal Corridor

JURISDICTION: St. Petersburg	FROM: Public/Semi-Public and Residential Low Medium	Feet
AREA: 4.37 Acres	TO: Residential Medium and Residential Low Medium	0 250 500

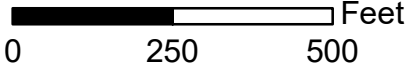
Case CW20-16

Map 6: Coastal High Hazard Area



 Coastal High Hazard Area



JURISDICTION: St. Petersburg	FROM: Public/Semi-Public and Residential Low Medium	
AREA: 4.37 Acres	TO: Residential Medium and Public/Semi-Public	